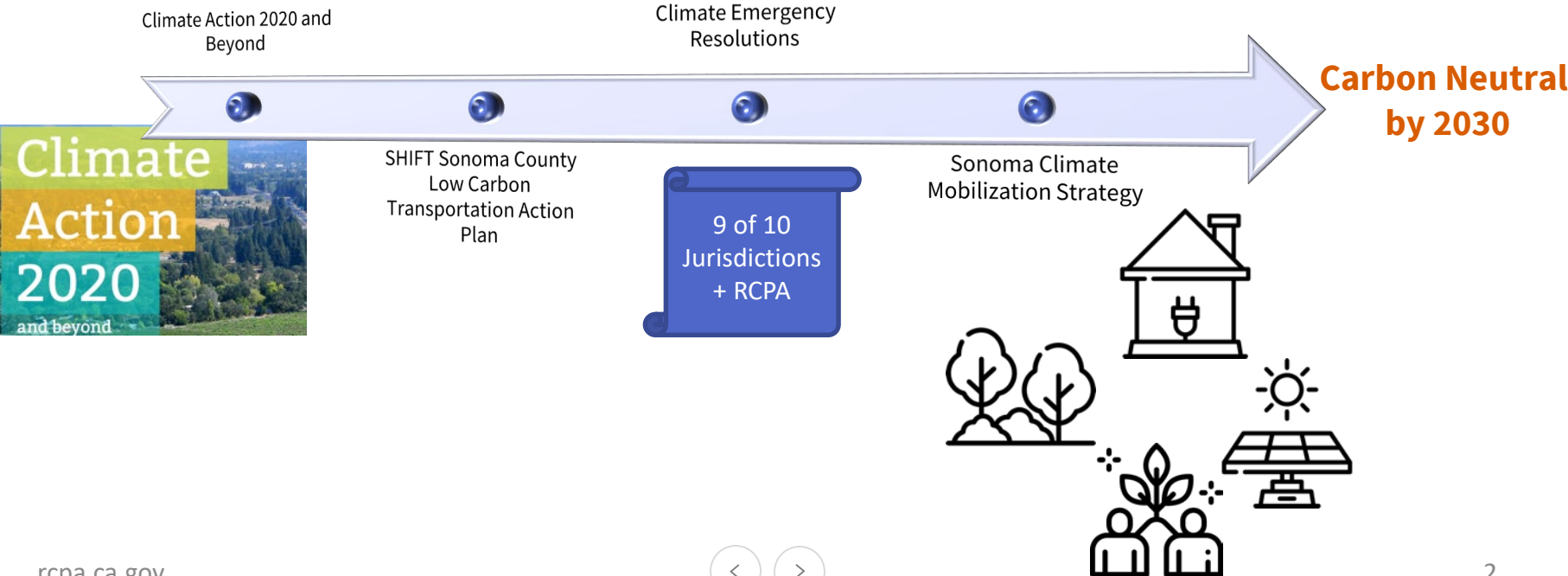


# Sonoma Climate Mobilization Strategy Update

November 18, 2020





- Prioritize **high impact actions** that are within local government control
- Prioritize **equitable outcomes** that improve quality of life for all
- **Connect community priorities** to climate action and resilience
- Identify and advocate for the necessary **regional and state level policy solutions** to enable Sonoma County to meet this goal
- **Align with and support local jurisdictions** in climate work
- **Establish metrics** to track progress (GHG inventory plus other indicators)

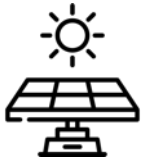


## DECARBONIZATION:

Target Existing Sources of Greenhouse Gas Emissions



**CARBON SEQUESTRATION:** Significantly increase carbon sinks



## RESILIENCE AND ADAPTATION:

Reduce risk and vulnerability; increase ability to recover



## EQUITY AND COMMUNITY ENGAGEMENT:

Support and improve climate actions by engaging local communities

Jurisdiction	Climate Emergency Resolution Goal
Cloverdale	40% below 1990 levels by 2030
Cotati	"...develop and implement more ambitious but achievable goals consistent with or exceeding state goals and objectives"
Healdsburg	"...achieve zero net emissions as quickly as possible"
Petaluma	Carbon neutral as quickly as possible and no later than 2045
Santa Rosa	Carbon neutral by 2030
Sebastopol	Net zero by no later than 2030
Sonoma	Net zero no later than 2030
Sonoma County	"...achieve zero net emissions as quickly as possible"
Windsor	Zero net emissions by 2030, and no later than 2045

Initiative	Sector	Strategy
Decarbonization	Building Energy	<ul style="list-style-type: none"> <li>1. All Electric Buildings Campaign</li> <li>2. Carbon-Free Electricity</li> </ul>
	Transportation	<ul style="list-style-type: none"> <li>3. Drive Less Sonoma County Campaign</li> <li>4. EV Access for All Partnership</li> <li>5. Sonoma County Vehicle Miles Traveled Bank</li> </ul>
	Solid Waste	<ul style="list-style-type: none"> <li>6. Zero Waste by 2030</li> </ul>
Sequestration		<ul style="list-style-type: none"> <li>7. Countywide Carbon Sequestration Campaign</li> <li>8. Green Communities for All</li> </ul>
Resilience and Adaptation		<ul style="list-style-type: none"> <li>9. Energy Grid for the Future</li> <li>10. Climate Resilient Sonoma County</li> </ul>
Equity and Community Engagement		<ul style="list-style-type: none"> <li>11. Community Advisory Committee</li> <li>12. Climate Attitudes and Needs Survey</li> <li>13. Collaborate with Community-based Organizations</li> <li>14. Equity and Climate in All Policies</li> </ul>

	Key Milestones	Target Completion Date
	Advisory committee and stakeholder input	June-August 2020
	RCPA Board input and direction	August 10, 2020
	Emergency Policy Package working groups revise draft strategy	September-November 2020
	RCPA Board adopts final Sonoma Climate Mobilization Strategy	December 2020
	Funding and implementation plan developed	March 2021
	RCPA Board approves funding and implementation plan	April 2021

### **All Electric Buildings Campaign**

Accelerate electrification of existing buildings and electrify all new buildings.

- Integrate equity into building electrification plans.
- Develop a date certain, funded, phased retrofit requirement for existing buildings to transition to all electric.
- Require new buildings to be all electric.

### **Carbon-Free Electricity**

Accelerate the transition to 100 percent carbon-free electricity.

- Promote the use of 100% renewable and/or carbon-free energy, such as SCP EverGreen or City of Healdsburg Green Rate, in residential and commercial building.
- For municipal buildings, achieve 100 percent carbon-free electricity by 2030 through combination of Evergreen and onsite solar plus battery storage.
- Develop campaign with incentives to increase installations of solar plus battery storage.
- Develop campaign to increase the use of demand response using capable technologies (e.g., appliances, cars, batteries).



### **Drive Less Sonoma County Campaign**

Make it easier to get around Sonoma County without a car.

- Implement network of low-stress bike and pedestrian facilities (e.g., pathways, bike lanes, sidewalks) connecting to major bus and rail transit hubs, schools, employment centers, medical facilities, and other key destinations as identified in the SCTA Travel Behavior Study.
- Implement recommendations from Vision Zero Action Plan to make walking and biking safer.
- Develop a “next generation” transit system for Sonoma County that is an attractive and viable option to driving alone and provides equitable mobility for all.
- Implement strategies from the SCTA Comprehensive Transportation Plan that reduce emissions (e.g., bikeshare, expand employer commute programs, unbundle parking from residential and commercial leases).

### **EV Access for All Partnership**

Accelerate the transition to 100 percent electric vehicles (EV) for all transportation needs not met by biking or walking.

- Work with regional partners and local businesses to develop over 10,000 public and workplace charging stations in Sonoma County by 2027.
- Develop a package of local ordinances and other actions to address remaining permitting barriers for installing charging equipment and accelerate the shift away from the permitting of new fossil fuel infrastructure.
- Create accessible EV ownership/lease concierge service for low-income residents, students, and seniors.

### **Sonoma County Vehicles Miles Traveled (VMT) Bank**

Develop VMT mitigation banking structure for new development to fund transportation demand management (TDM) and VMT reducing projects and programs.

- Tie to countywide VMT reduction goals as defined in the SCTA Comprehensive Transportation Plan (CTP) and other policies.

### **Zero Waste by 2030**

Develop policies, programs, and education campaigns to eliminate waste sent to landfills.

- Develop program to achieve zero organics to landfill by 2030.
- Adopt a countywide construction and demolition ordinance that requires contractors to meet recycle goals beyond Cal Green, including a requirement for tracking and reporting construction waste disposal.
- Launch a community-wide zero waste campaign with a focus on reuse and reduced consumption.

## Countywide Carbon Sequestration Campaign

Work with local partners to develop a campaign to sequester XX GHGs by 2030.

- Work directly with Sonoma County Agricultural Preservation and Open Space District to continue land conservation work and land use policies (e.g., General Plan, Williamson Act) that result in measurable carbon sequestration.
- Work directly with Resource Conservation Districts (RCDs) to support implementation of Carbon Farm Plans (CFPs) already developed and work with additional agricultural producers to develop new plans.
- Use local funding resources to leverage state and federal money already available to prioritize the role of agriculture in climate change mitigation.
- Advocate for legislation to provide additional state and federal funding.
- Work with community-based organizations (CBO) to analyze potential impact of urban/city sequestration and develop menu of recommendations for cities to implement.

### **Green Communities for All**

Promote the benefits of sequestration in urban spaces and provide resources to implement carbon gardens and other sequestration solutions.

- Develop a campaign to educate the community on carbon sequestration and its role in achieving our goal of carbon neutrality by 2030.
- Partner with community-based organizations to launch a community greening challenge that promotes tree planting and other gardening practices to create healthy soils and sequester carbon.

### **Energy Grid for the Future**

Increase energy grid resilience and prepare for electrification of buildings and transportation systems.

- Develop model microgrids, focusing on critical infrastructure and vulnerable populations first.
- Advocate for the creation of a reliable, robust energy grid that will support increased loads from electrification and not be disrupted by wildfires and other climate related risks.

### **Climate Resilient Sonoma County**

Address the economic, social, and environmental impacts of future wildfires, floods, extreme heat, drought, sea level rise, and other climate change risks.

- Implement priority recommendations from the Urban Land Institute Resilience Advisory Services Panel.
- Support launch of a local vegetation/forest management and fire prevention corps.
- Support implementation of local hazard mitigation plans.

### **Community Advisory Committee**

Engage committee members representing diverse interests and expertise.

### **Climate Attitudes and Needs Survey**

Track community involvement and input as the Sonoma Climate Mobilization Strategy is implemented.

### **Collaborate with Community-based Organizations**

Work closely with skilled organizations to increase capacity to implement the Climate Emergency Mobilization Strategy.

### **Equity and Climate in All Policies**

Develop processes and tools to support inclusion of equity and climate in all policies.

QUESTIONS?

# THANK YOU!

Tanya Narath  
Director of Climate Programs  
Tanya.Narath@rcpa.ca.gov

