
2018



Site Recommendation Book

885 Hopper Avenue
Santa Rosa, CA 95403

QID# 18-43281

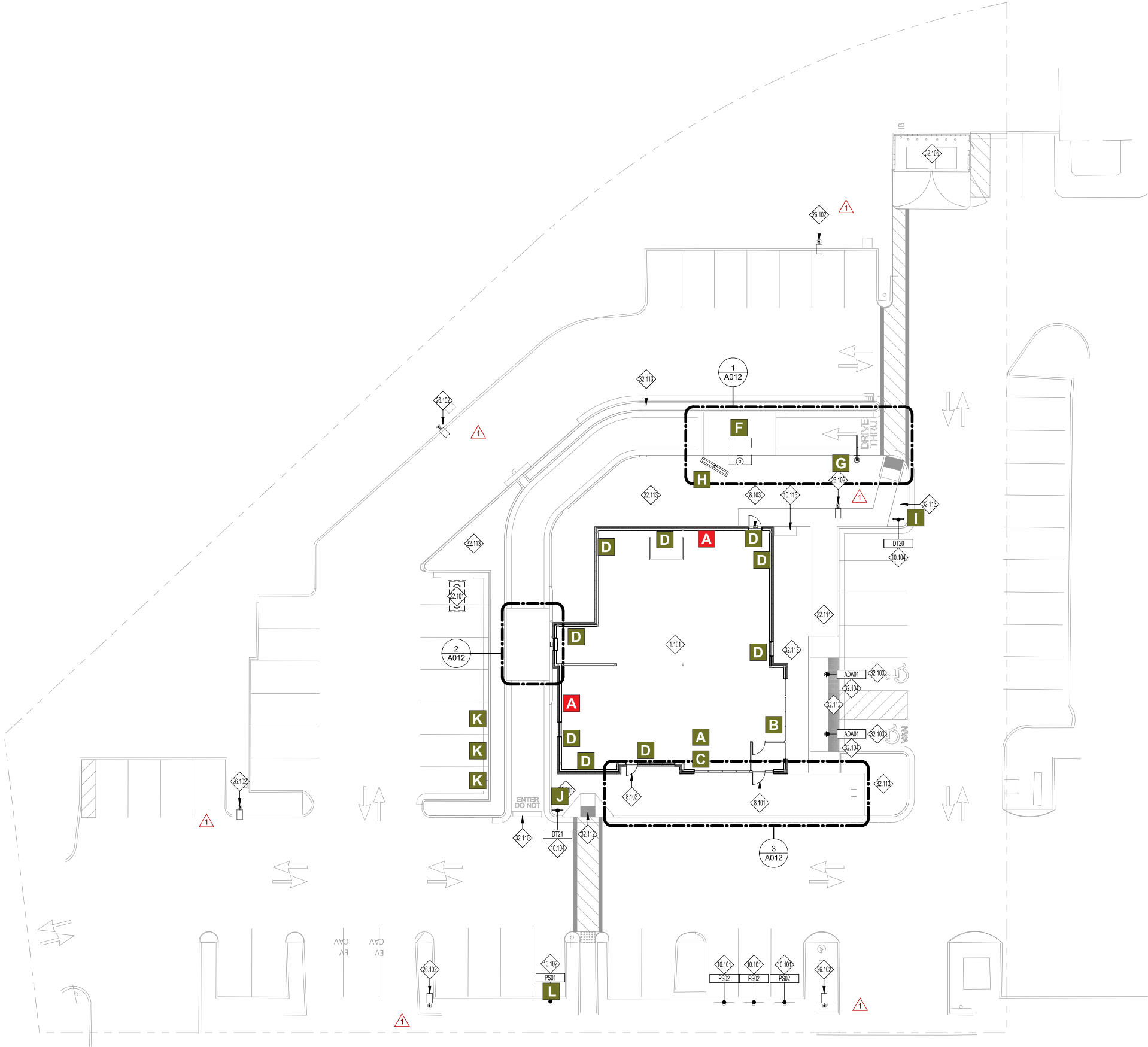
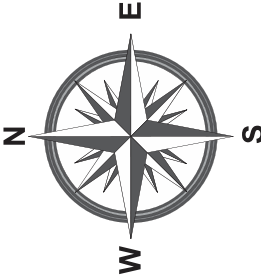
VARIANCE REQUEST

Designer:
Greg Sloan

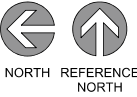
Date:
7-20-2020

SITE PLAN

- A 32" CHANNEL LETTERS
- B 20" CHANNEL LETTERS
- C DRIVE THRU LETTERS
- D AWNINGS
- E HANGING WINDOW SIGN
- F DT CANOPY
- G CLEARANCE BAR
- H MENU BOARD
- I DT DIRECTIONAL
- J DT DIRECTIONAL
- K RPU SIGNS
- L RFDT PANELS
- M TENANT PANELS



1 | ARCHITECTURAL SITE PLAN
1/16" = 1'-0"



HILTONDISPLAYS
125 HILLSIDE DRIVE • GREENVILLE SC 29607
P 800 353 9132 • F 864 242 2204
www.hiltondisplays.com

QID 18-43281

JOB NAME

Panera Bread

LOCATION

885 Hopper Ave.
Santa Rosa, CA 95403

CUSTOMER CONTACT

SALESMAN / PM

Priscilla Heilingoetter

DESIGNER

Greg Sloan

DWG. DATE

9-26-18

REV. DATE / REVISION

1-09-19 / GTS	9-11-19 / GTS
1-14-19 BS / + code page	
1-18-19 BS / various	
1-23-19 CW / tenant panel	
6-18-19 CW	9-13-19 / GTS
7-29-19 / GTS	10-17-19 / GTS

SCALE

FILE

2018/Panera Bread/Locations/
Santa Rosa CA/
18-43281

DESIGN SPECIFICATIONS ACCEPTED BY:

EST:	CLIENT:
SLS/PM:	LANDLORD:

THE INTENT OF THIS DRAWING IS TO SHOW A CONCEPTUAL REPRESENTATION OF THE PROPOSED SIGNAGE. DUE TO VARIATIONS IN PRINTING DEVICES AND SUBSTRATES, THE FINISHED PRODUCT MAY DIFFER SLIGHTLY FROM DRAWING.

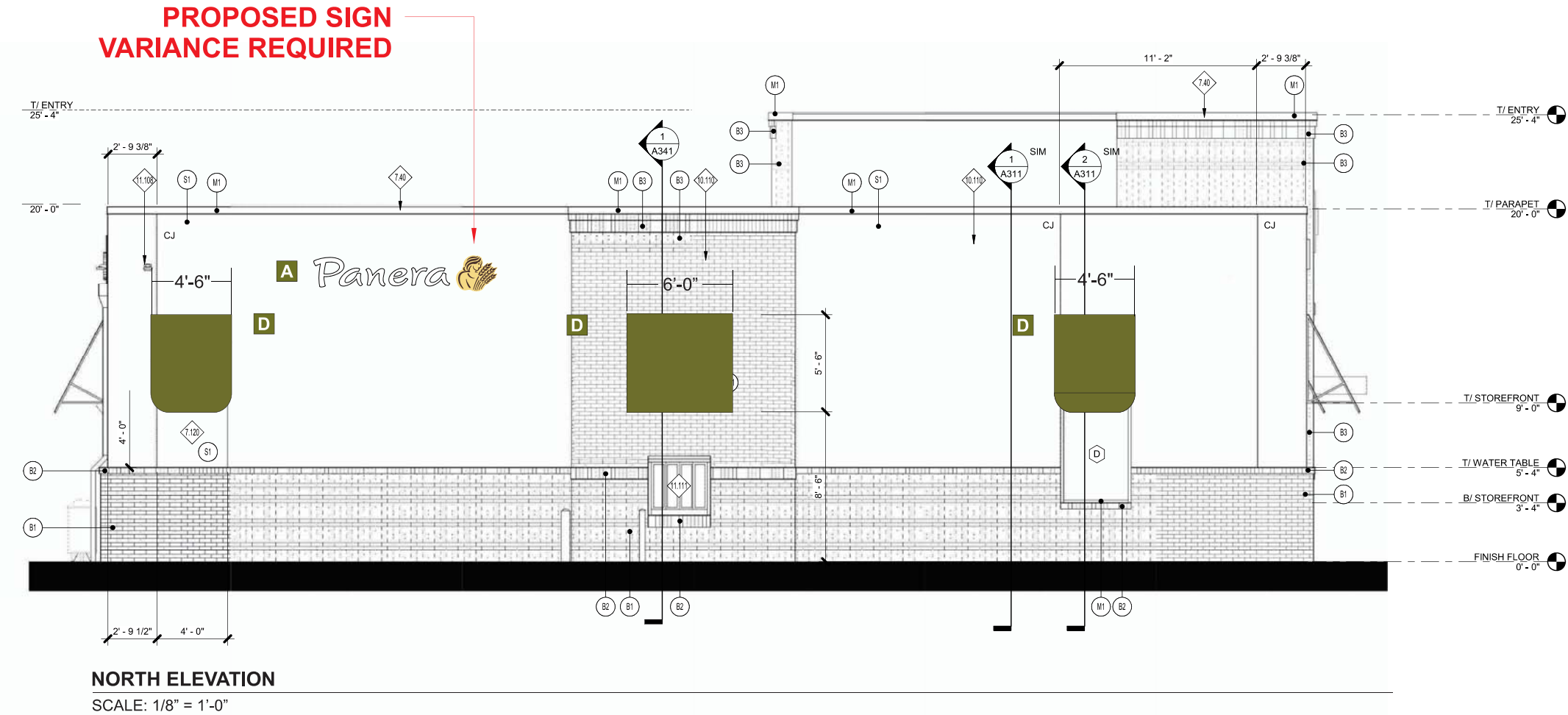


ELEVATION

- A 32" CHANNEL LETTERS
- B 20" CHANNEL LETTERS
- C DRIVE THRU LETTERS
- D AWNINGS
- E HANGING WINDOW SIGN
- F DT CANOPY
- G CLEARANCE BAR
- H MENU BOARD
- I DT DIRECTIONAL
- J DT DIRECTIONAL
- K RPU SIGNS
- L RFDT PANELS
- M TENANT PANELS

NO EXISTING SIGNAGE

NORTH ELEVATION
ALLOWED: 24.84 SQ. FT.
PROPOSED: 0.0 SQ. FT.



HILTONDISPLAYS
125 HILLSIDE DRIVE • GREENVILLE SC 29607
P 800 353 9132 • F 864 242 2204
www.hiltondisplays.com

QID 18-43281

JOB NAME

Panera Bread

LOCATION

885 Hopper Ave.
Santa Rosa, CA 95403

CUSTOMER CONTACT

SALESMAN / PM

Priscilla Heilingoetter

DESIGNER

Greg Sloan

DWG. DATE

9-26-18

REV. DATE / REVISION

1-09-19 / GTS 9-11-19 / GTS
1-14-19 BS / + code page
1-18-19 BS / various
1-23-19 CW /tenant panel
6-18-19 CW 9-13-19 / GTS
7-29-19 / GTS 10-17-19 / GTS

SCALE

FILE

2018/Panera Bread/Locations/
Santa Rosa CA/
18-43281

DESIGN SPECIFICATIONS ACCEPTED BY:

EST:	CLIENT:
SLS/PM:	LANDLORD:

THE INTENT OF THIS DRAWING IS TO SHOW A CONCEPTUAL REPRESENTATION OF THE PROPOSED SIGNAGE. DUE TO VARIATIONS IN PRINTING DEVICES AND SUBSTRATES, THE FINISHED PRODUCT MAY DIFFER SLIGHTLY FROM DRAWING.

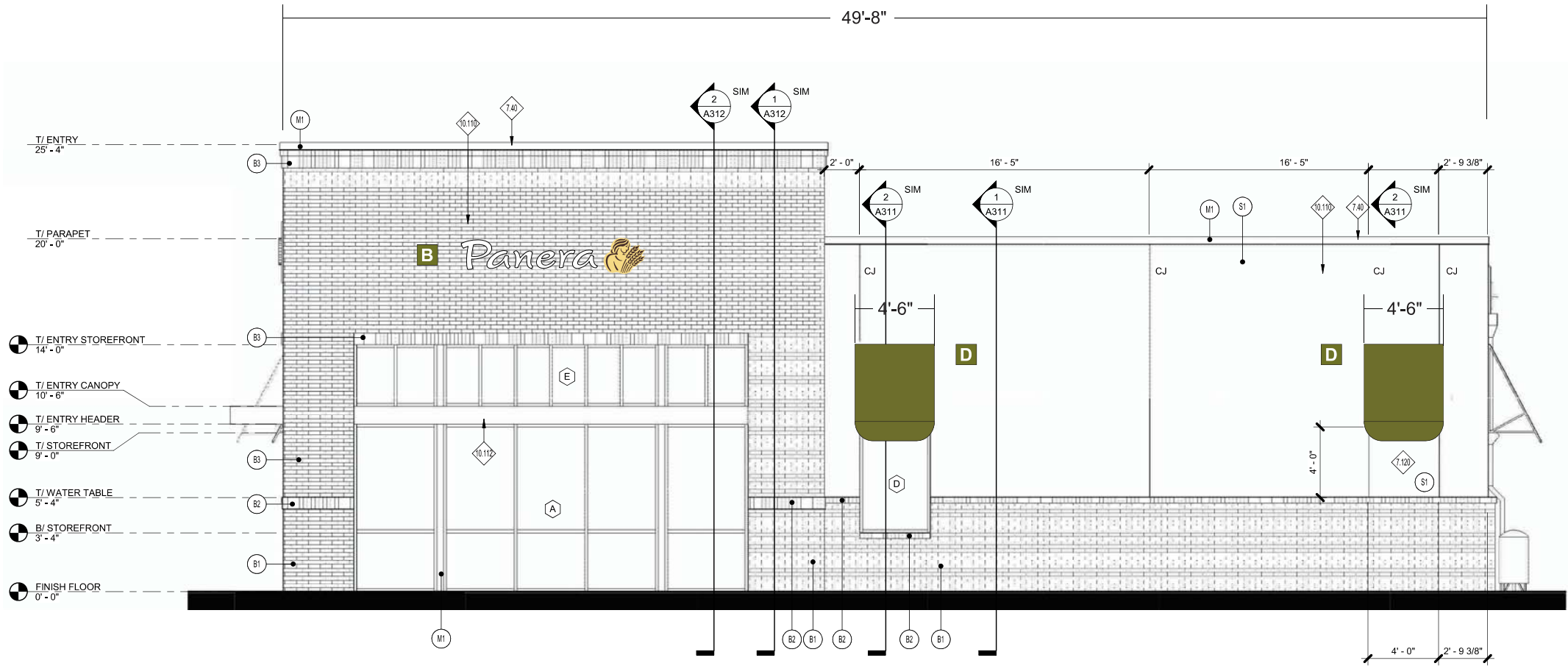


ELEVATION

- A 32" CHANNEL LETTERS
- B 20" CHANNEL LETTERS
- C DRIVE THRU LETTERS
- D AWNINGS
- E HANGING WINDOW SIGN
- F DT CANOPY
- G CLEARANCE BAR
- H MENU BOARD
- I DT DIRECTIONAL
- J DT DIRECTIONAL
- K RPU SIGNS
- L RFDT PANELS
- M TENANT PANELS

EXISTING CONDITIONS

SOUTH ELEVATION
ALLOWED: 0.0 SQ. FT.
PROPOSED: 21.01 SQ. FT.



SOUTH ELEVATION
SCALE: 1/8" = 1'-0"

HILTONDISPLAYS
125 HILLSIDE DRIVE • GREENVILLE SC 29607
P 800 353 9132 • F 864 242 2204
www.hiltondisplays.com

QID 18-43281

JOB NAME

Panera Bread

LOCATION

885 Hopper Ave.
Santa Rosa, CA 95403

CUSTOMER CONTACT

SALESMAN / PM

Priscilla Heilingoetter

DESIGNER

Greg Sloan

DWG. DATE

9-26-18

REV. DATE / REVISION

1-09-19 / GTS	9-11-19 / GTS
1-14-19 BS / + code page	
1-18-19 BS / various	
1-23-19 CW /tenant panel	
6-18-19 CW	9-13-19 / GTS
7-29-19 / GTS	10-17-19 / GTS

SCALE

FILE

2018/Panera Bread/Locations/
Santa Rosa CA/
18-43281

DESIGN SPECIFICATIONS ACCEPTED BY:

EST:	CLIENT:
SLS/PM:	LANDLORD:

THE INTENT OF THIS DRAWING IS TO SHOW A CONCEPTUAL REPRESENTATION OF THE PROPOSED SIGNAGE. DUE TO VARIATIONS IN PRINTING DEVICES AND SUBSTRATES, THE FINISHED PRODUCT MAY DIFFER SLIGHTLY FROM DRAWING.



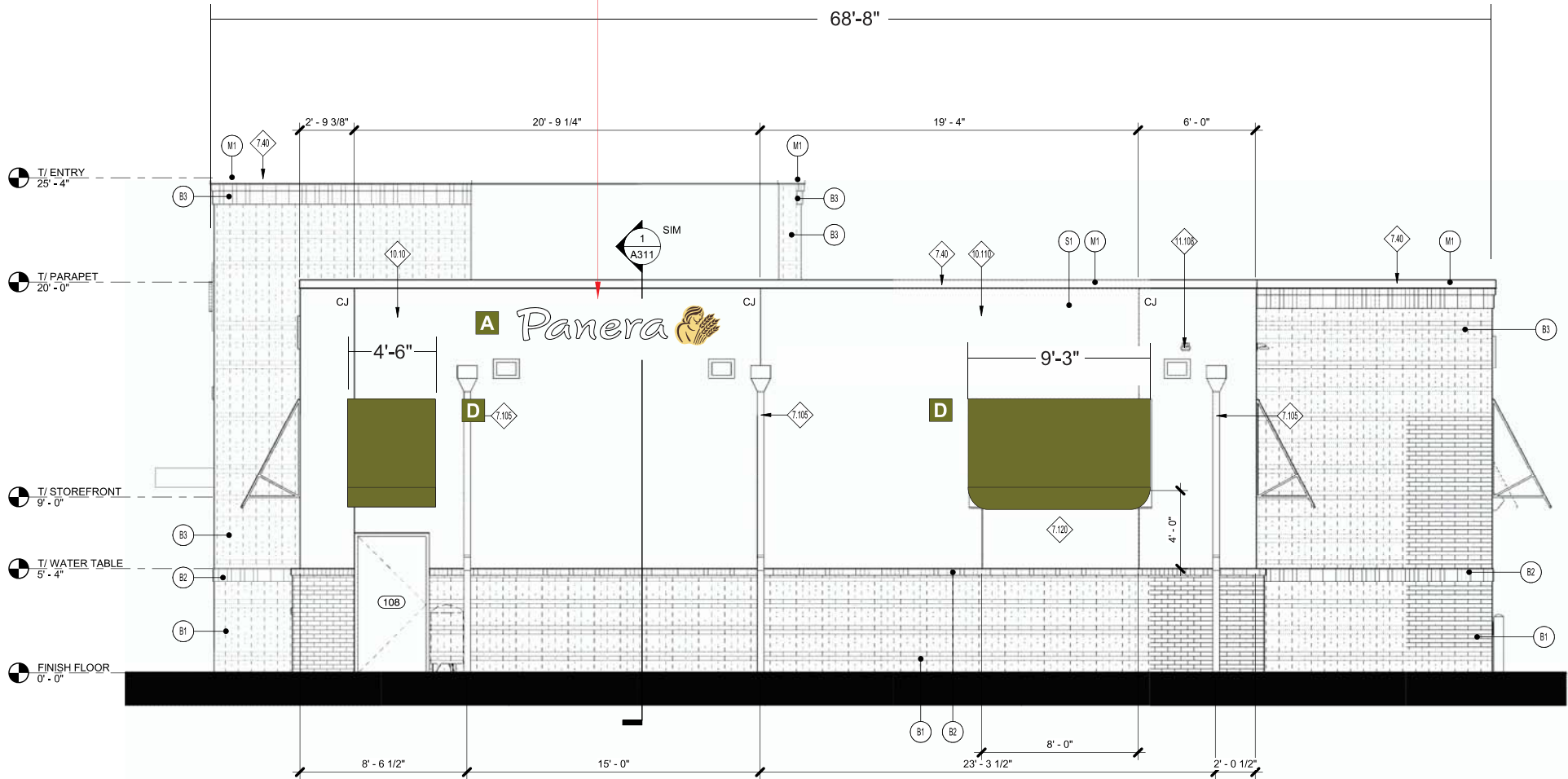
ELEVATION

- A 32" CHANNEL LETTERS
- B 20" CHANNEL LETTERS
- C DRIVE THRU LETTERS
- D AWNINGS
- E HANGING WINDOW SIGN
- F DT CANOPY
- G CLEARANCE BAR
- H MENU BOARD
- I DT DIRECTIONAL
- J DT DIRECTIONAL
- K RPU SIGNS
- L RFDT PANELS
- M TENANT PANELS

NO EXISTING SIGNAGE

EAST ELEVATION
ALLOWED: 0.0 SQ. FT.
PROPOSED: 0.0 SQ. FT.

PROPOSED SIGN
VARIANCE REQUIRED



EAST ELEVATION
SCALE: 1/8" = 1'-0"

HILTONDISPLAYS
125 HILLSIDE DRIVE • GREENVILLE SC 29607
P 800 353 9132 • F 864 242 2204
www.hiltondisplays.com

QID 18-43281

JOB NAME

Panera Bread

LOCATION

885 Hopper Ave.
Santa Rosa, CA 95403

CUSTOMER CONTACT

SALESMAN / PM

Priscilla Heilingoetter

DESIGNER

Greg Sloan

DWG. DATE

9-26-18

REV. DATE / REVISION

1-09-19 / GTS	9-11-19 / GTS
1-14-19 BS / + code page	
1-18-19 BS / various	
1-23-19 CW /tenant panel	
6-18-19 CW	9-13-19 / GTS
7-29-19 / GTS	10-17-19 / GTS

SCALE

FILE

2018/Panera Bread/Locations/
Santa Rosa CA/
18-43281

DESIGN SPECIFICATIONS ACCEPTED BY:

EST:	CLIENT:
SLS/PM:	LANDLORD:

THE INTENT OF THIS DRAWING IS TO SHOW A CONCEPTUAL REPRESENTATION OF THE PROPOSED SIGNAGE. DUE TO VARIATIONS IN PRINTING DEVICES AND SUBSTRATES, THE FINISHED PRODUCT MAY DIFFER SLIGHTLY FROM DRAWING.

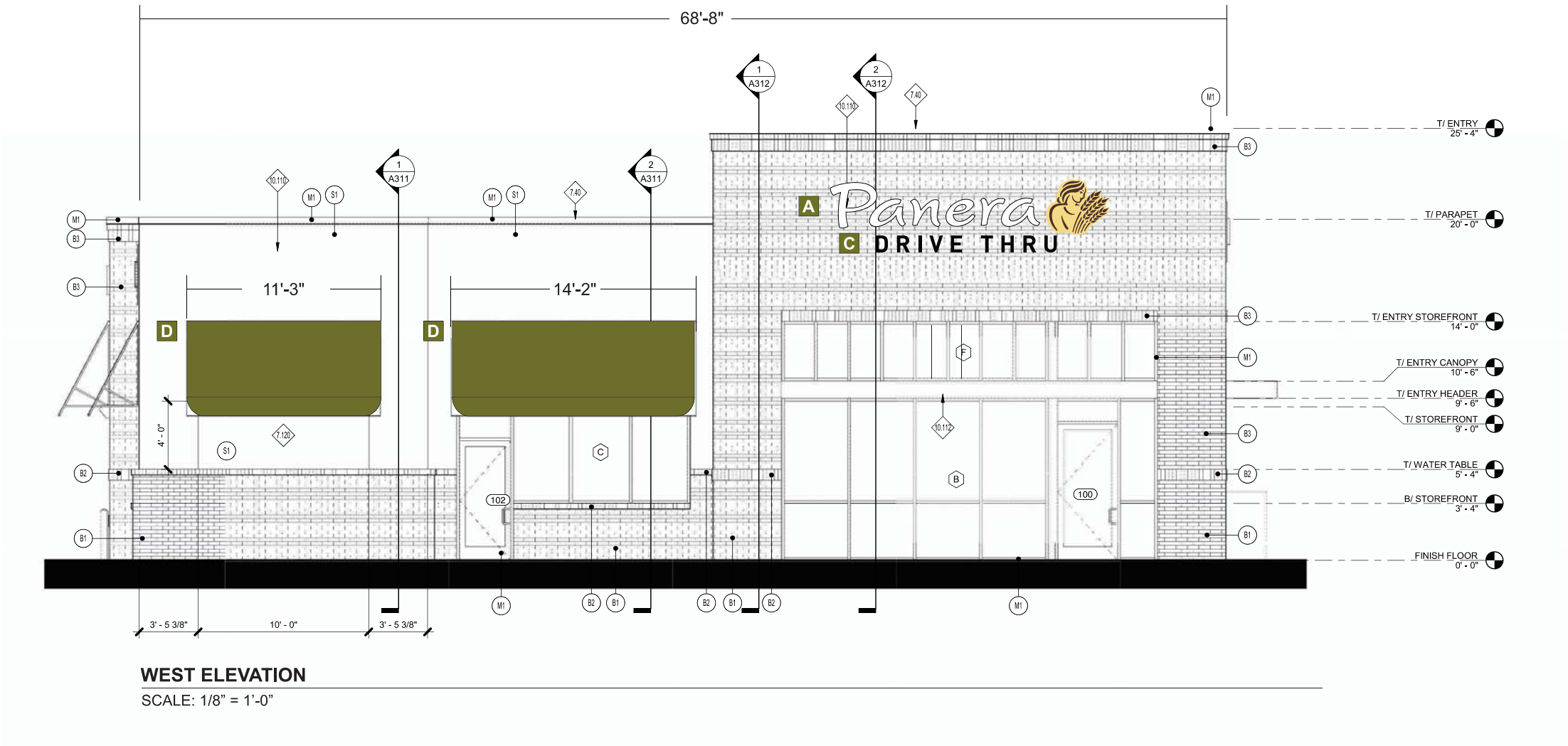


ELEVATION

- A 32" CHANNEL LETTERS
- B 20" CHANNEL LETTERS
- C DRIVE THRU LETTERS
- D AWNINGS
- E HANGING WINDOW SIGN
- F DT CANOPY
- G CLEARANCE BAR
- H MENU BOARD
- I DT DIRECTIONAL
- J DT DIRECTIONAL
- K RPU SIGNS
- L RFDT PANELS
- M TENANT PANELS

EXISTING CONDITIONS

WEST ELEVATION
ALLOWED: 68.67 SQ. FT.
PROPOSED: 64.72 SQ. FT.



HILTONDISPLAYS
125 HILLSIDE DRIVE • GREENVILLE SC 29607
P 800 353 9132 • F 864 242 2204
www.hiltondisplays.com

QID 18-43281

JOB NAME

Panera Bread

LOCATION

885 Hopper Ave.
Santa Rosa, CA 95403

CUSTOMER CONTACT

SALESMAN / PM

Priscilla Heilingoetter

DESIGNER

Greg Sloan

DWG. DATE

9-26-18

REV. DATE / REVISION

1-09-19 / GTS 9-11-19 / GTS
1-14-19 BS / + code page
1-18-19 BS / various
1-23-19 CW /tenant panel
6-18-19 CW 9-13-19 / GTS
7-29-19 / GTS 10-17-19 / GTS

SCALE

FILE

2018/Panera Bread/Locations/
Santa Rosa CA/
18-43281

DESIGN SPECIFICATIONS ACCEPTED BY:

EST:	CLIENT:
SLS/PM:	LANDLORD:

THE INTENT OF THIS DRAWING IS TO SHOW A CONCEPTUAL REPRESENTATION OF THE PROPOSED SIGNAGE. DUE TO VARIATIONS IN PRINTING DEVICES AND SUBSTRATES, THE FINISHED PRODUCT MAY DIFFER SLIGHTLY FROM DRAWING.

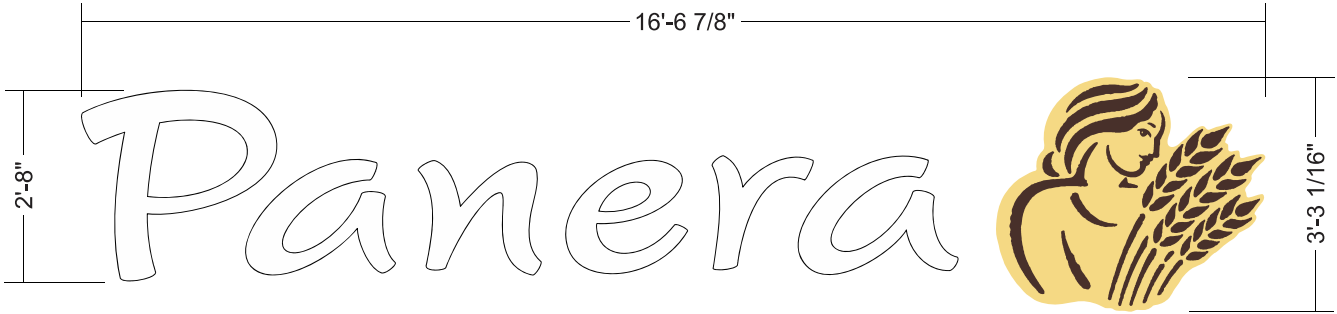


ILLUMINATED CHANNEL LETTERS & LOGO: H2.L WEST ELEVATION / EXISTING

PAN-G4S-RCL-33167-H2L-P

QTY. 1

A



FRONT VIEW

SCALE: 3/8"=1'-0" (11X17 PAPER)

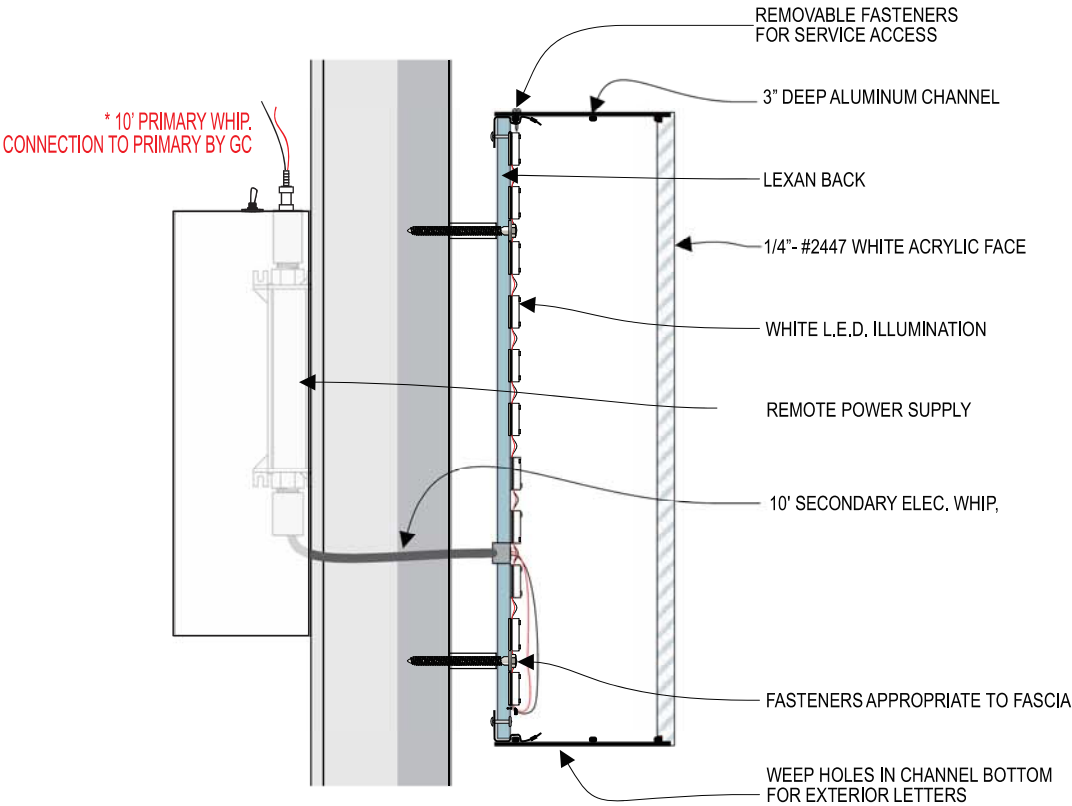
54.02 SF

- INTERNALLY ILLUMINATED FRONT LIT/HALO LIT CHANNEL LETTERS:
- 2447 WHITE FACES WITH 3" DEEP CHANNELS
 - PAINTED TO BLACK
 - CLEAR LEXAN BACKS
 - 6500 WHITE LED LIGHTING
 - TRIMLESS DESIGN
 - INTERNALLY ILLUMINATED/HALO LIT MB LOGO WITH PANTONE 7403 CP TRANSLUCENT BACKGROUND WITH PMS 476 CP DETAILS
 - MB CHANNELS PAINTED TO MATCH PANTONE 476 CP
 - ALL LETTERS TO BE PINNED OFF WALL 1"
 - REMOTE POWER SUPPLIES

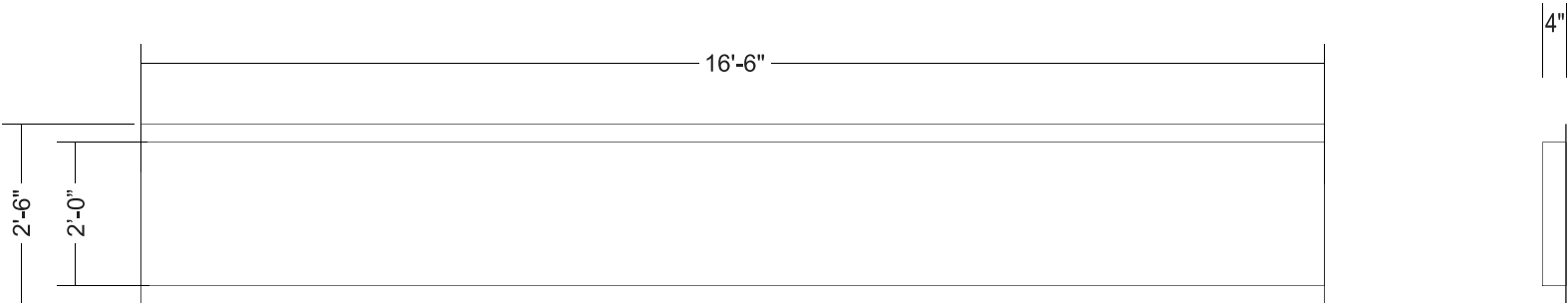
NOTES:

SEAL-TITE MUST BE PROVIDED FOR PANERA LETTERS AND LOGO.
PROVIDE FASTENERS PER ENGINEERING.

PART #: PAN-18-43281-39



TYPICAL CHANNEL LETTER: N.T.S.



Side View

① Front View
Scale: 3/8" = 1'-0"

QTY. 1 ALUMINUM REVERSE RACEWAY:
PART #: PAN-18-43281-37

COLOR LEGEND	
	PMS/PAINT
	PMS 5757 CP
	PMS 7403 CP
	PMS 476 CP
	MP43251 Toque White
	Black

HILTONDISPLAYS
125 HILLSIDE DRIVE • GREENVILLE SC 29607
P 800 353 9132 • F 864 242 2204
www.hiltondisplays.com

QID 18-43281

JOB NAME

Panera Bread

LOCATION

885 Hopper Ave.
Santa Rosa, CA 95403

CUSTOMER CONTACT

SALESMAN / PM

Priscilla Heilingoetter

DESIGNER

Greg Sloan

DWG. DATE

9-26-18

REV. DATE / REVISION

1-09-19 / GTS	9-11-19 / GTS
1-14-19 BS / + code page	
1-18-19 BS / various	
1-23-19 CW /tenant panel	
6-18-19 CW	9-13-19 / GTS
7-29-19 / GTS	10-17-19 / GTS

SCALE

FILE

2018/Panera Bread/Locations/
Santa Rosa CA/
18-43281

DESIGN SPECIFICATIONS ACCEPTED BY:

EST:	CLIENT:
SLS/PM:	LANDLORD:

THE INTENT OF THIS DRAWING IS TO SHOW A CONCEPTUAL REPRESENTATION OF THE PROPOSED SIGNAGE. DUE TO VARIATIONS IN PRINTING DEVICES AND SUBSTRATES, THE FINISHED PRODUCT MAY DIFFER SLIGHTLY FROM DRAWING.



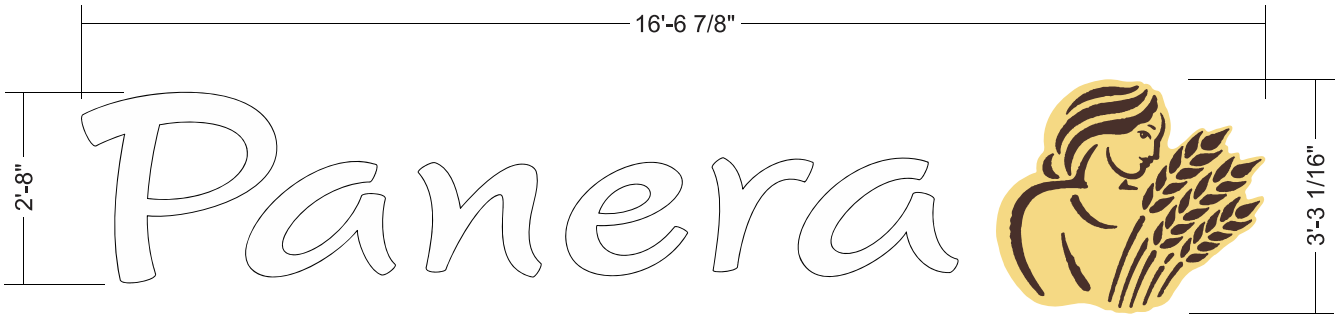
ILLUMINATED CHANNEL LETTERS & LOGO: H2.L

PAN-G4S-RCL-33167-H2L-P

QTY. 2

A

PROPOSED SIGNS FOR NORTH AND EAST ELEVATIONS.
SUBJECT OF REQUEST FOR VARIANCE.



FRONT VIEW

SCALE: 3/8"=1'-0" (11X17 PAPER)

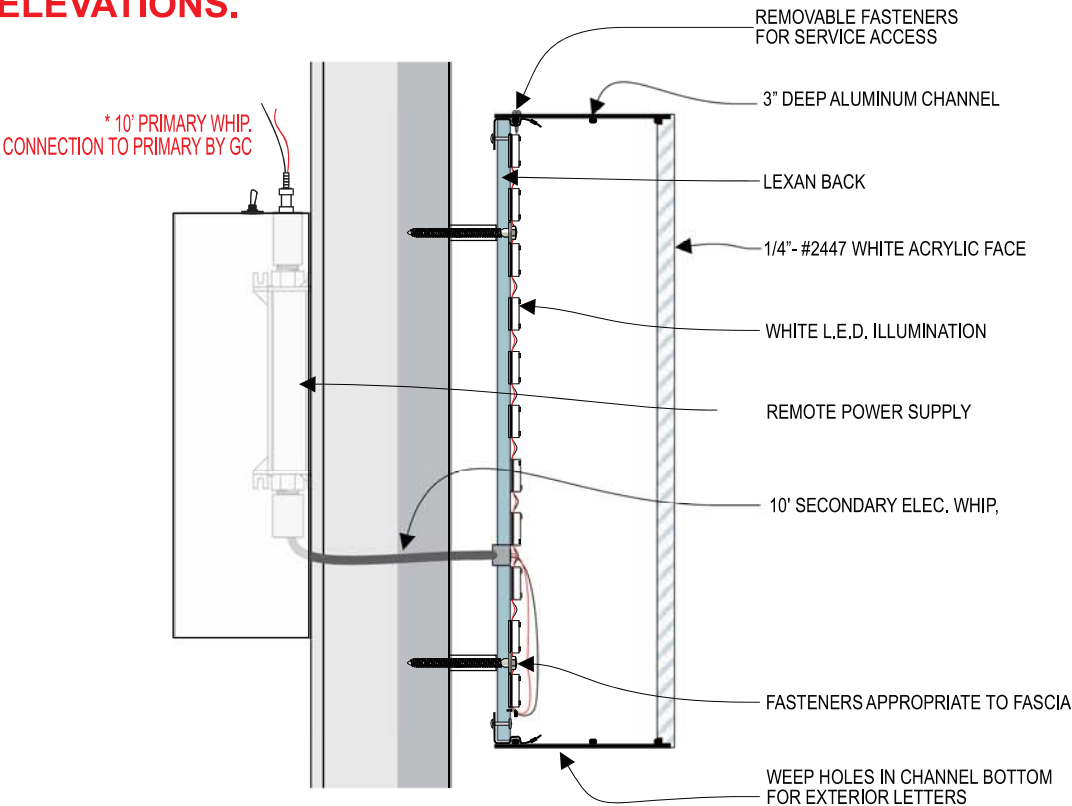
54.02 SF

- INTERNALLY ILLUMINATED FRONT LIT/HALO LIT CHANNEL LETTERS:
- 2447 WHITE FACES WITH 3" DEEP CHANNELS
 - PAINTED TO BLACK
 - CLEAR LEXAN BACKS
 - 6500 WHITE LED LIGHTING
 - TRIMLESS DESIGN
 - INTERNALLY ILLUMINATED/HALO LIT MB LOGO WITH PANTONE 7403 CP TRANSLUCENT BACKGROUND WITH PMS 476 CP DETAILS
 - MB CHANNELS PAINTED TO MATCH PANTONE 476 CP
 - ALL LETTERS TO BE PINNED OFF WALL 1"
 - REMOTE POWER SUPPLIES

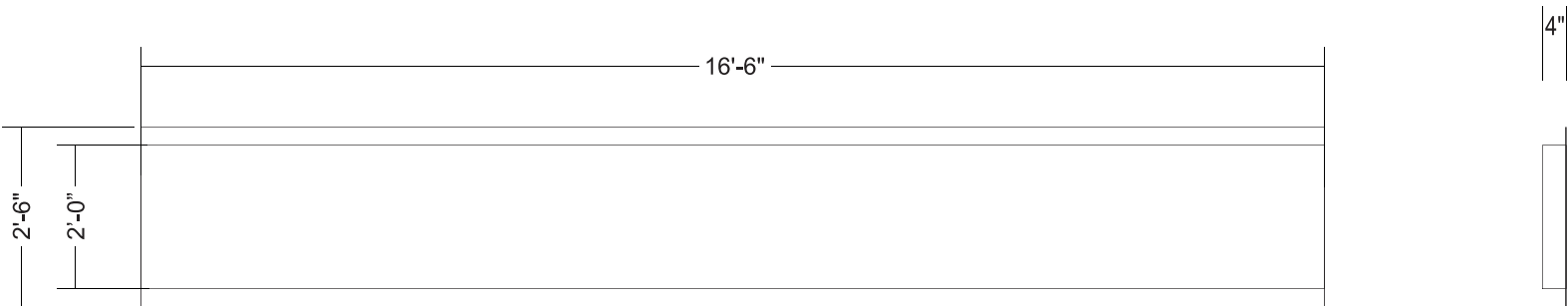
NOTES:

SEAL-TITE MUST BE PROVIDED FOR PANERA LETTERS AND LOGO.
PROVIDE FASTENERS PER ENGINEERING.

PART #: PAN-18-43281-39



TYPICAL CHANNEL LETTER: N.T.S.



① Front View
Scale: 3/8" = 1'-0"

Side View

COLOR LEGEND	
	PMS/PAINT
	PMS 5757 CP
	PMS 7403 CP
	PMS 476 CP
	MP43251 Toque White
	Black

QTY. 1 ALUMINUM REVERSE RACEWAY:
PART #: PAN-18-43281-37

HILTONDISPLAYS
125 HILLSIDE DRIVE • GREENVILLE SC 29607
P 800 353 9132 • F 864 242 2204
www.hiltondisplays.com

QID 18-43281

JOB NAME

Panera Bread

LOCATION

885 Hopper Ave.
Santa Rosa, CA 95403

CUSTOMER CONTACT

SALESMAN / PM

Priscilla Heilingoetter

DESIGNER

Greg Sloan

DWG. DATE

9-26-18

REV. DATE / REVISION

1-09-19 / GTS	9-11-19 / GTS
1-14-19 BS / + code page	
1-18-19 BS / various	
1-23-19 CW /tenant panel	
6-18-19 CW	9-13-19 / GTS
7-29-19 / GTS	10-17-19 / GTS

SCALE

FILE

2018/Panera Bread/Locations/
Santa Rosa CA/
18-43281

DESIGN SPECIFICATIONS ACCEPTED BY:

EST:	CLIENT:
SLS/PM:	LANDLORD:

THE INTENT OF THIS DRAWING IS TO SHOW A CONCEPTUAL REPRESENTATION OF THE PROPOSED SIGNAGE. DUE TO VARIATIONS IN PRINTING DEVICES AND SUBSTRATES, THE FINISHED PRODUCT MAY DIFFER SLIGHTLY FROM DRAWING.

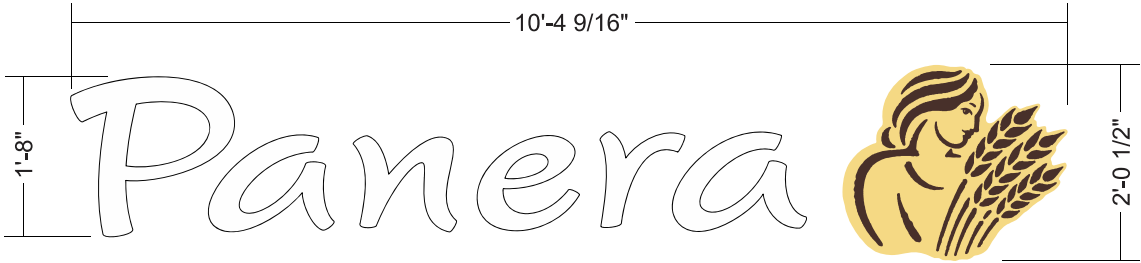


ILLUMINATED CHANNEL LETTERS & LOGO: H2.L SOUTH ELEVATION / EXISTING

PAN-G4S-RCL-20125-H2L-P

QTY. 1

B



FRONT VIEW

SCALE: 1/2"=1'-0" (11X17 PAPER)

21.01 SF

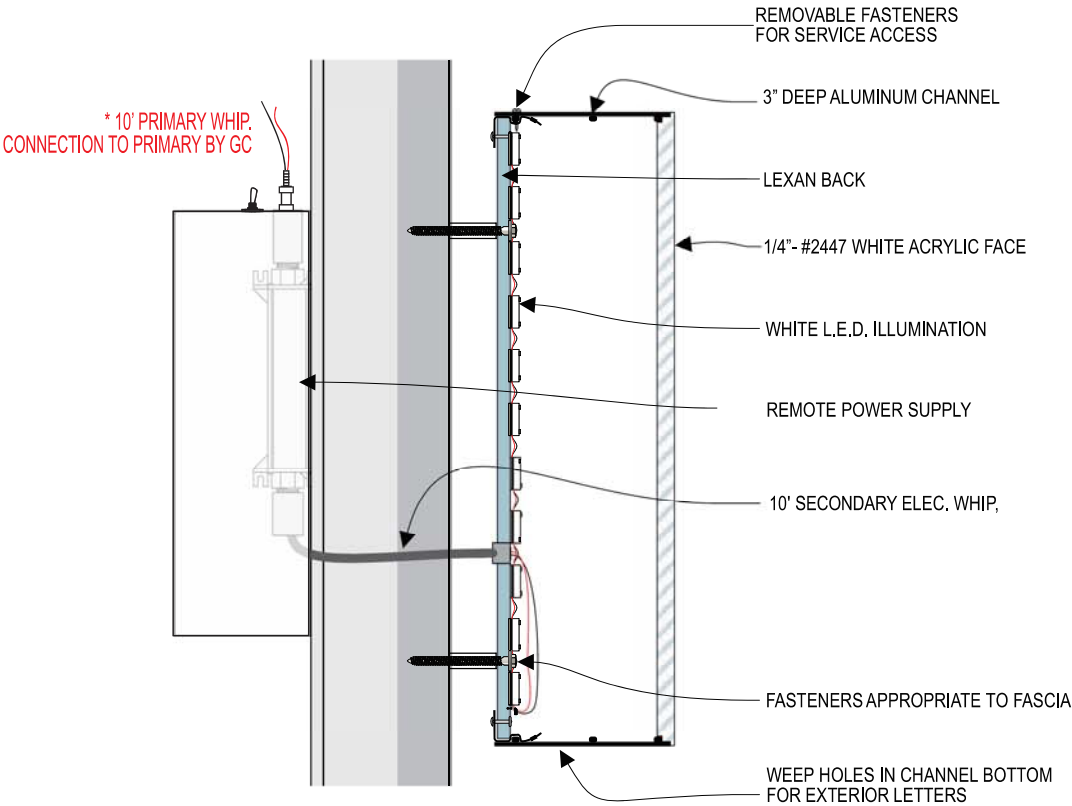
INTERNALLY ILLUMINATED FRONT LIT/HALO LIT CHANNEL LETTERS:

- 2447 WHITE FACES WITH 3" DEEP CHANNELS
PAINTED TO BLACK
- CLEAR LEXAN BACKS
- 6500 WHITE LED LIGHTING
- TRIMLESS DESIGN
- INTERNALLY ILLUMINATED/HALO LIT MB LOGO WITH
PANTONE 7403 CP TRANSLUCENT BACKGROUND
WITH PMS 476 CP DETAILS
- MB CHANNELS PAINTED TO MATCH PANTONE 476 CP
- ALL LETTERS TO BE PINNED OFF WALL 1"
- REMOTE POWER SUPPLIES

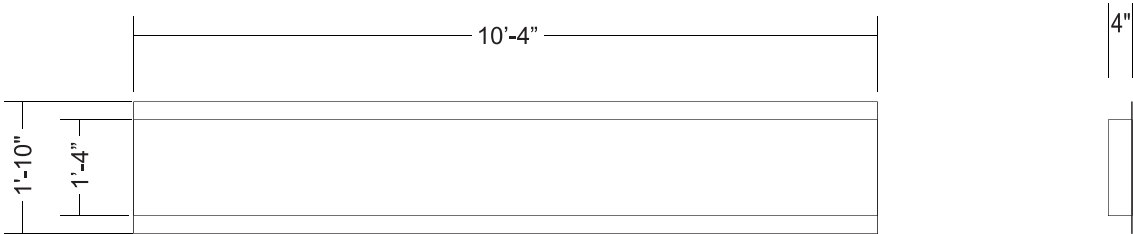
NOTES:

SEAL-TITE MUST BE PROVIDED FOR PANERA LETTERS AND LOGO.
PROVIDE FASTENERS PER ENGINEERING.

PART #: PAN-18-43281-39



TYPICAL CHANNEL LETTER: N.T.S.



① Front View
Scale: 3/8" = 1'-0"

Side View

QTY. 1 ALUMINUM REVERSE RACEWAY:
PART #: PAN-18-43281-38

COLOR LEGEND	
	PMS/PAINT
	PMS 5757 CP
	PMS 7403 CP
	PMS 476 CP
	MP43251 Toque White
	Black

HILTONDISPLAYS
125 HILLSIDE DRIVE • GREENVILLE SC 29607
P 800 353 9132 • F 864 242 2204
www.hiltondisplays.com

QID 18-43281

JOB NAME

Panera Bread

LOCATION

885 Hopper Ave.
Santa Rosa, CA 95403

CUSTOMER CONTACT

SALESMAN / PM

Priscilla Heilingoetter

DESIGNER

Greg Sloan

DWG. DATE

9-26-18

REV. DATE / REVISION

1-09-19 / GTS	9-11-19 / GTS
1-14-19 BS / + code page	
1-18-19 BS / various	
1-23-19 CW /tenant panel	
6-18-19 CW	9-13-19 / GTS
7-29-19 / GTS	10-17-19 / GTS

SCALE

FILE

2018/Panera Bread/Locations/
Santa Rosa CA/
18-43281

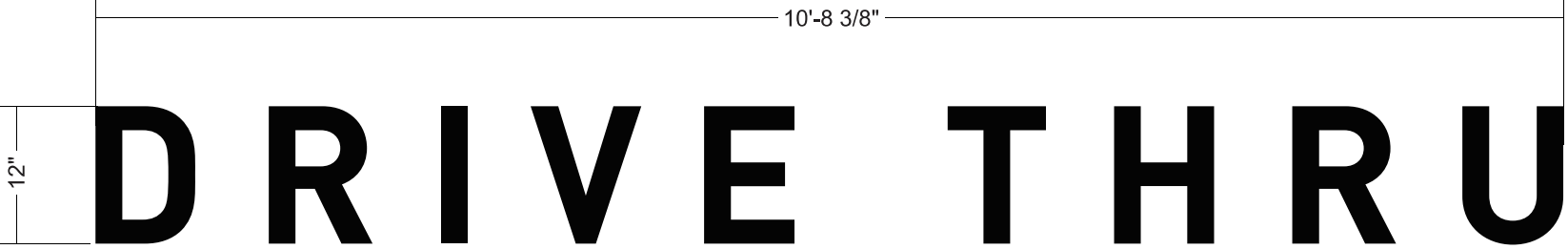
DESIGN SPECIFICATIONS ACCEPTED BY:

EST:	CLIENT:
SLS/PM:	LANDLORD:

THE INTENT OF THIS DRAWING IS TO SHOW A CONCEPTUAL REPRESENTATION OF THE PROPOSED SIGNAGE. DUE TO VARIATIONS IN PRINTING DEVICES AND SUBSTRATES, THE FINISHED PRODUCT MAY DIFFER SLIGHTLY FROM DRAWING.



DRIVE THRU WALL SIGN / **EXISTING**
PAN-DT-12-RCL-NTC-D/N
QTY. 1
C



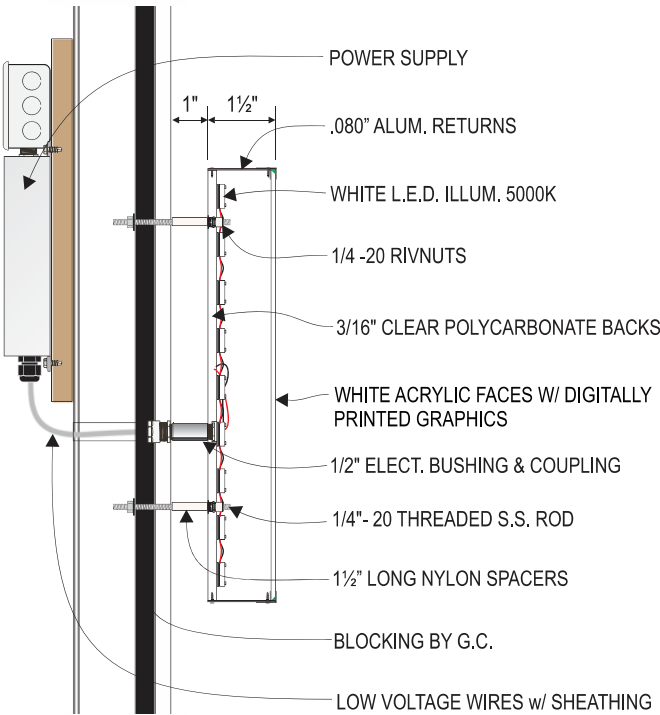
FRONT VIEW
SCALE: 3/4"=1'-0" **10.70 SF**

- INTERNALLY ILLUMINATED FRONT LIT/HALO LIT CHANNEL LETTERS:
- 2447 WHITE FACES WITH 3" DEEP CHANNELS
 - FIRST SURFACE APPLIED BLACK PERFORATED VINYL GRAPHICS
 - CLEAR LEXAN BACKS
 - 6500 WHITE LED LIGHTING
 - ALL LETTERS TO BE PINNED OFF WALL 1"
 - REMOTE POWER SUPPLIES

NOTES:

SEAL-TITE MUST BE PROVIDED FOR ELECTRICAL PENETRATION(S).
PROVIDE FASTENERS PER ENGINEERING.

PART #: **PAN-18-43281-39**



Halo Illuminated Channel Letters

Scale: Not to Scale

HILTONDISPLAYS
125 HILLSIDE DRIVE • GREENVILLE SC 29607
P 800 353 9132 • F 864 242 2204
www.hiltondisplays.com

QID 18-43281

JOB NAME

Panera Bread

LOCATION

885 Hopper Ave.
Santa Rosa, CA 95403

CUSTOMER CONTACT

SALESMAN / PM

Priscilla Heilingoetter

DESIGNER

Greg Sloan

DWG. DATE

9-26-18

REV. DATE / REVISION

1-09-19 / GTS	9-11-19 / GTS
1-14-19 BS / + code page	
1-18-19 BS / various	
1-23-19 CW /tenant panel	
6-18-19 CW	9-13-19 / GTS
7-29-19 / GTS	10-17-19 / GTS

SCALE

FILE

2018/Panera Bread/Locations/
Santa Rosa CA/
18-43281

DESIGN SPECIFICATIONS ACCEPTED BY:

EST:	CLIENT:
SLS/PM:	LANDLORD:

THE INTENT OF THIS DRAWING IS TO SHOW A CONCEPTUAL REPRESENTATION OF THE PROPOSED SIGNAGE. DUE TO VARIATIONS IN PRINTING DEVICES AND SUBSTRATES, THE FINISHED PRODUCT MAY DIFFER SLIGHTLY FROM DRAWING.

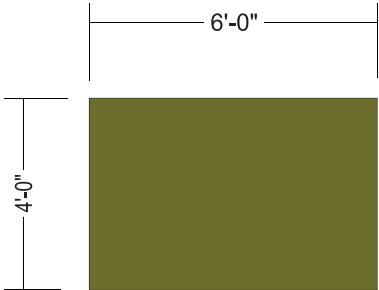


AWNING / DT / EXISTING

PART #

QTY. 1

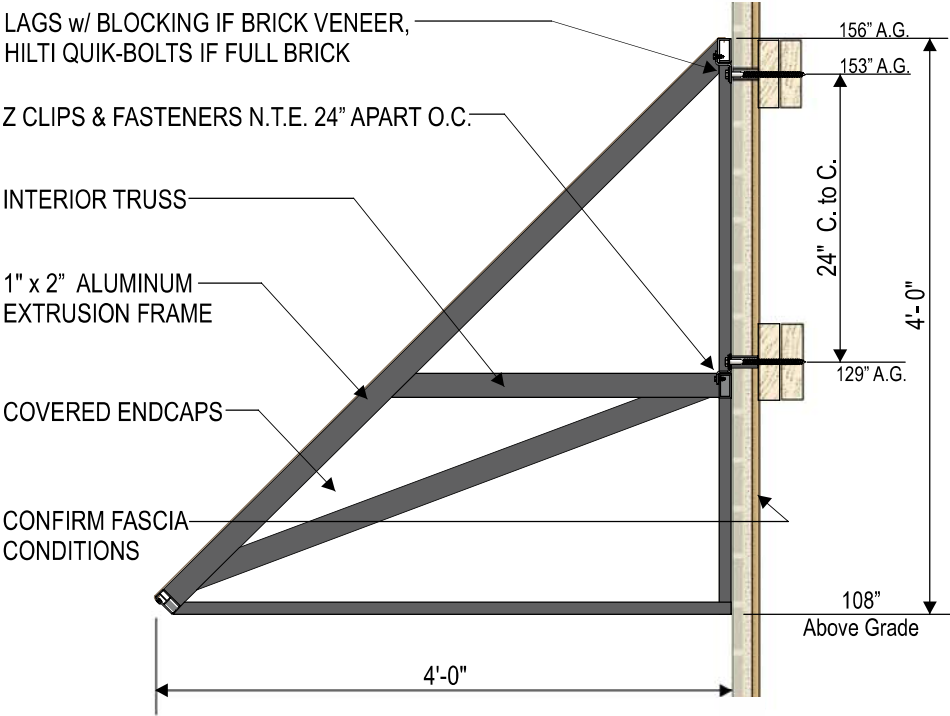
D



PAN-18-43281-25
EAST ELEVATION
QTY. 1

SCALE: 1/4" = 1'-0"

SATTLER
329-043



DRIVE THRU AWNING SECTION ONLY: 3/4" = 1'-0"

EXTERNALLY ILLUMINATED DRIVE THRU AWNING:

- 1" x 2" .125 TUBE ALUMINUM EXTRUSION WELDED FRAME
- FRAME POWDER BM "CHEATING HEART"
- TRUSS SPACING N.T.E. 24" APART O.C.
- OPEN SOFFIT, OPEN ENDS
- BLACK PVC TRIM STAPLE COVER
- MOUNTED USING Z-CLIPS & APPROPRIATE ANCHORS
- G.C. TO PROVIDE BLOCKING IF NEEDED
- AWNING FABRIC:

- SUNBRELLA FERN WITH GRAPHICS

AWNING COLOR LEGEND	
	PMS/PAINT
	PMS 7485 C
	PMS 7403 C
	100% White
	PMS 5757 C
	BM 1617 Cheating Heart

~~HILTON~~DISPLAYS

125 HILLSIDE DRIVE • GREENVILLE SC 29607
P 800 353 9132 • F 864 242 2204
www.hiltondisplays.com

QID 18-43281

JOB NAME

Panera Bread

LOCATION

885 Hopper Ave.
Santa Rosa, CA 95403

CUSTOMER CONTACT

SALESMAN / PM

Priscilla Heilingoetter

DESIGNER

Greg Sloan

DWG. DATE

9-26-18

REV. DATE / REVISION

1-09-19 / GTS 9-11-19 / GTS

1-14-19 BS / + code page

1-18-19 BS / various

1-23-19 CW /tenant panel

6-18-19 CW 9-13-19 / GTS

7-29-19 / GTS 10-17-19 / GTS

SCALE

FILE

2018/Panera Bread/Locations/
Santa Rosa CA/
18-43281

DESIGN SPECIFICATIONS ACCEPTED BY:

EST:	CLIENT:
SLS/PM:	LANDLORD:

THE INTENT OF THIS DRAWING IS TO SHOW A CONCEPTUAL REPRESENTATION OF THE PROPOSED SIGNAGE. DUE TO VARIATIONS IN PRINTING DEVICES AND SUBSTRATES, THE FINISHED PRODUCT MAY DIFFER SLIGHTLY FROM DRAWING.

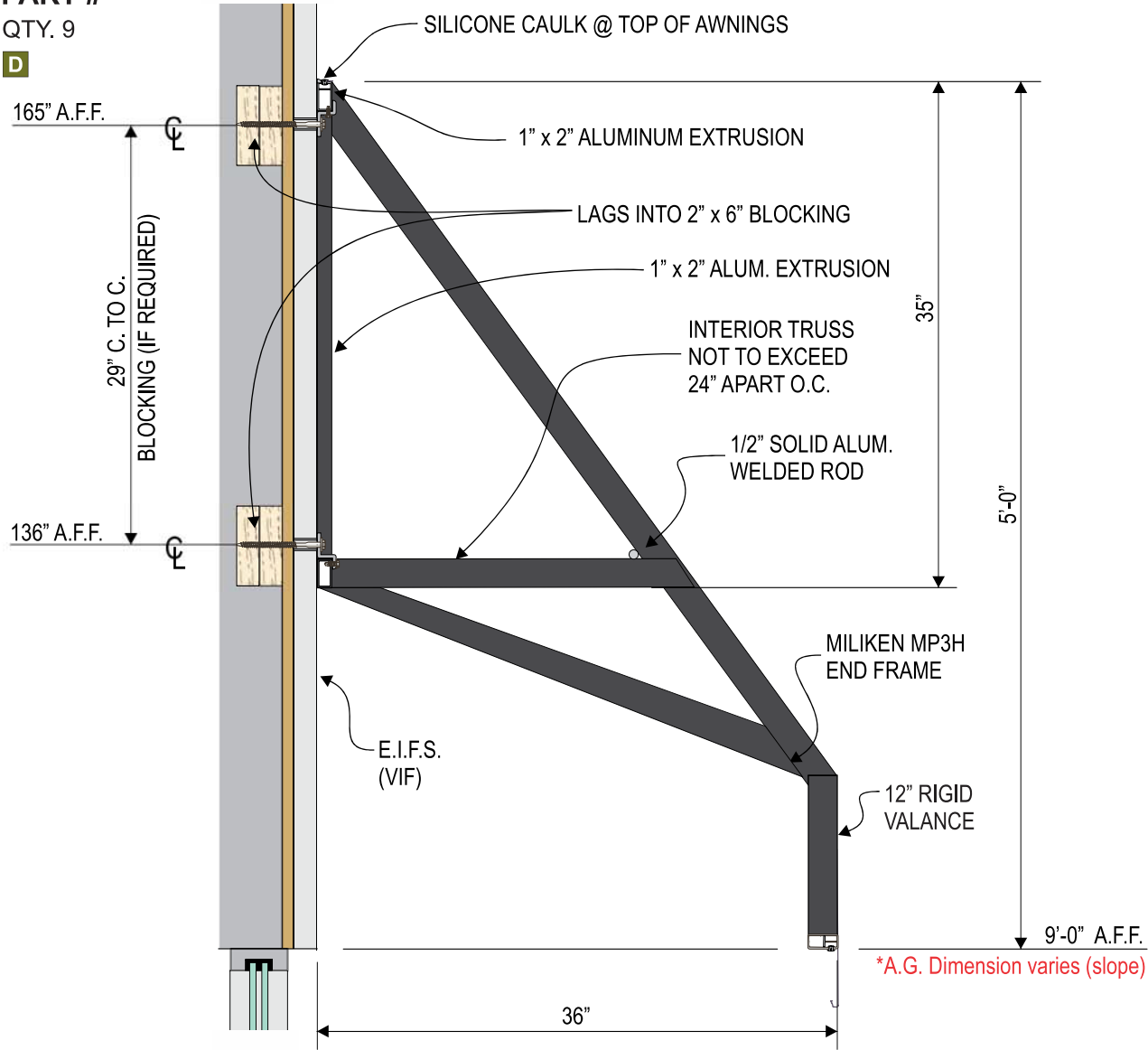


AWNINGS / EXISTING

PART #

QTY. 9

D



AWNING FRAME SECTION: 1" = 1'- 0"

- 1" x 2" .125 TUBE ALUMINUM EXTRUSION WELDED FRAME
- FRAME POWDER BM "CHEATING HEART"
- TRUSS SPACING N.T.E. 36" APART O.C.
- OPEN SOFFIT, OPEN ENDS
- 12" HIGH RIGID VALANCE W/ WHITE COPY AS SHOWN (IF APPLICABLE)
- PVC TRIM STAPLE COVER TO MATCH FRAMES
- MOUNTED USING Z-CLIPS & APPROPRIATE ANCHORS
- G.C. TO PROVIDE BLOCKING IF NEEDED
- AWNING FABRIC:

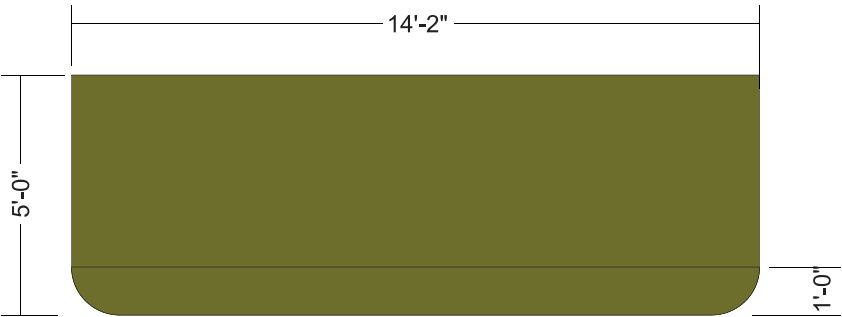
AWNING COLOR LEGEND

	PMS/PAINT
	PMS 7485 C
	PMS 7403 C
	100% White
	PMS 5757 C
	BM 1617 Cheating Heart



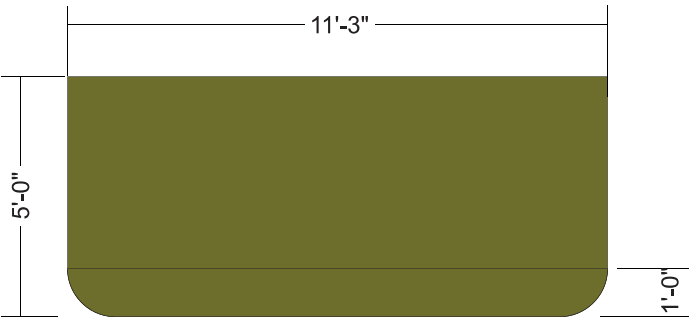
SATTLER
329-043

SCALE: 1/4" = 1'-0"



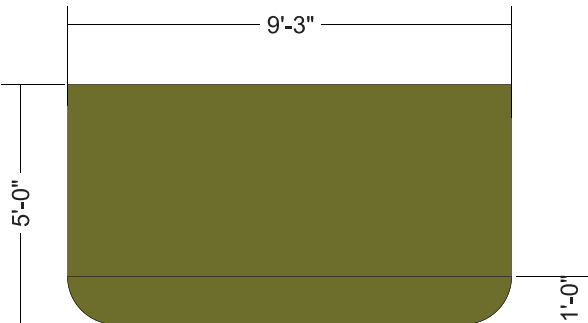
PAN-18-43281-9
WEST ELEVATION

QTY. 1



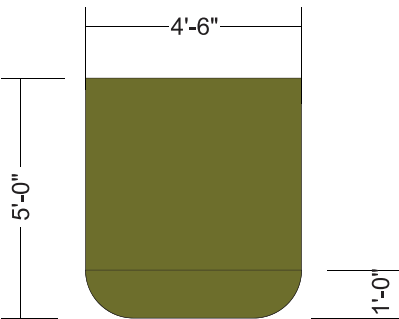
PAN-18-43281-10
WEST ELEVATION

QTY. 1

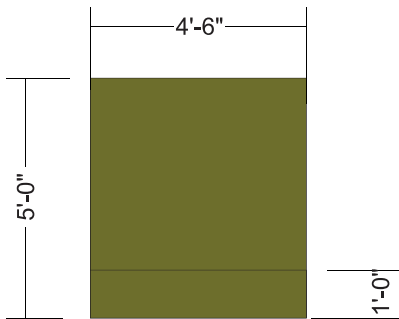


PAN-18-43281-11
EAST ELEVATION

QTY. 1



PAN-18-43281-12
NORTH & SOUTH ELEVATIONS
QTY. 4



PAN-18-43281-8
EAST ELEVATION
QTY. 1

HILTONDISPLAYS

125 HILLSIDE DRIVE • GREENVILLE SC 29607
P 800 353 9132 • F 864 242 2204
www.hiltondisplays.com

QID 18-43281

JOB NAME

Panera Bread

LOCATION

885 Hopper Ave.
Santa Rosa, CA 95403

CUSTOMER CONTACT

SALESMAN / PM

Priscilla Heilingoetter

DESIGNER

Greg Sloan

DWG. DATE

9-26-18

REV. DATE / REVISION

1-09-19 / GTS	9-11-19 / GTS
1-14-19 BS / + code page	
1-18-19 BS / various	
1-23-19 CW /tenant panel	
6-18-19 CW	9-13-19 / GTS
7-29-19 / GTS	10-17-19 / GTS

SCALE

FILE

2018/Panera Bread/Locations/
Santa Rosa CA/
18-43281

DESIGN SPECIFICATIONS ACCEPTED BY:

EST:	CLIENT:
SLS/PM:	LANDLORD:

THE INTENT OF THIS DRAWING IS TO SHOW A CONCEPTUAL REPRESENTATION OF THE PROPOSED SIGNAGE. DUE TO VARIATIONS IN PRINTING DEVICES AND SUBSTRATES, THE FINISHED PRODUCT MAY DIFFER SLIGHTLY FROM DRAWING.



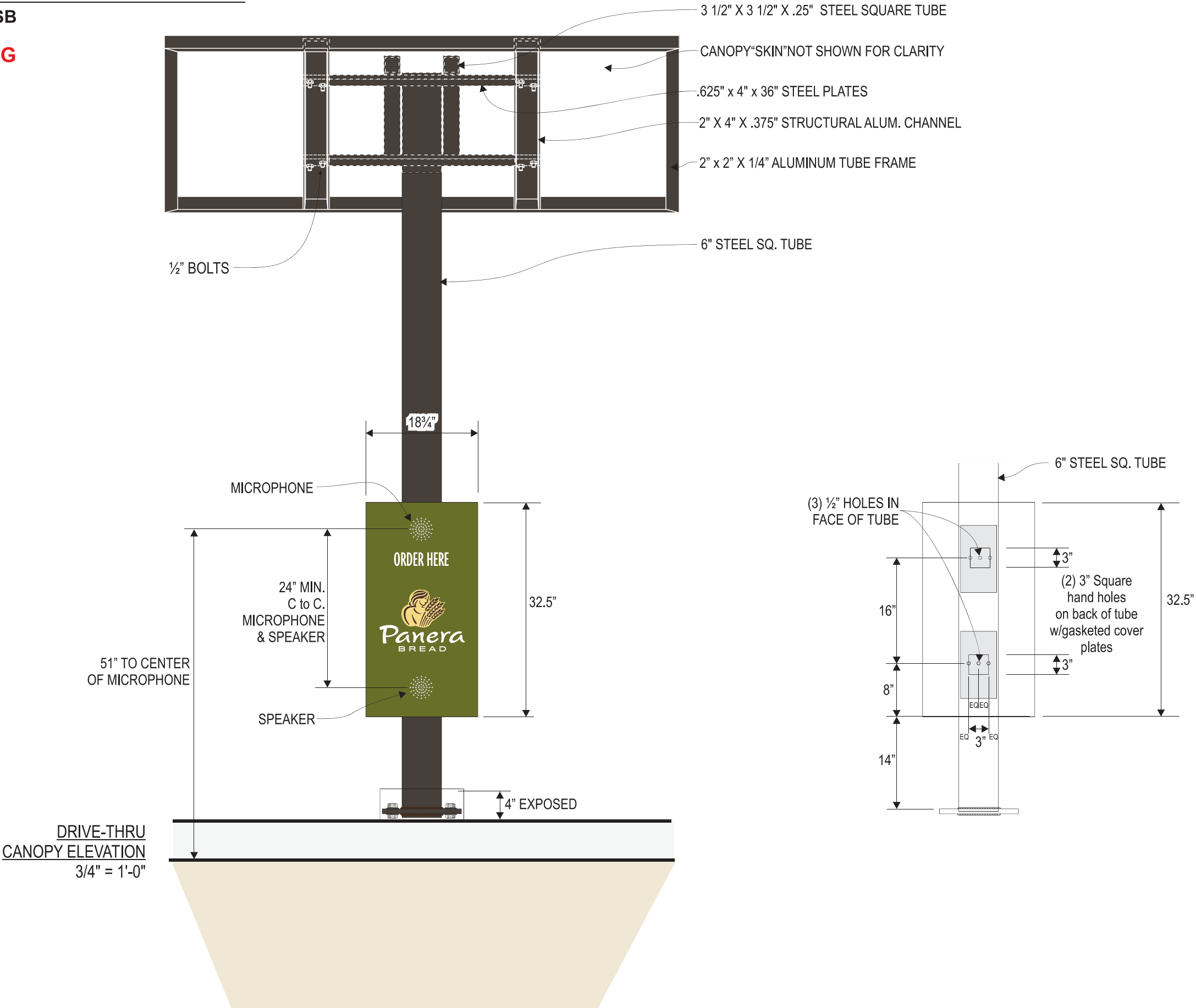
MENU CANOPY WITH SPEAKER BOX - CONT.

PAN-DT-CANOPY-9466-SB

QTY. 1

F

EXISTING



HILTONDISPLAYS

125 HILLSIDE DRIVE • GREENVILLE SC 29607
P 800 353 9132 • F 864 242 2204
www.hiltondisplays.com

QID 18-43281

JOB NAME

Panera Bread

LOCATION

885 Hopper Ave.
Santa Rosa, CA 95403

CUSTOMER CONTACT

SALESMAN / PM

Priscilla Heilingoetter

DESIGNER

Greg Sloan

DWG. DATE

9-26-18

REV. DATE / REVISION

1-09-19 / GTS	9-11-19 / GTS
1-14-19 BS / + code page	
1-18-19 BS / various	
1-23-19 CW /tenant panel	
6-18-19 CW	9-13-19 / GTS
7-29-19 / GTS	10-17-19 / GTS

SCALE

FILE

2018/Panera Bread/Locations/
Santa Rosa CA/
18-43281

DESIGN SPECIFICATIONS ACCEPTED BY:

EST:	CLIENT:
SLS/PM:	LANDLORD:

THE INTENT OF THIS DRAWING IS TO SHOW A CONCEPTUAL REPRESENTATION OF THE PROPOSED SIGNAGE. DUE TO VARIATIONS IN PRINTING DEVICES AND SUBSTRATES, THE FINISHED PRODUCT MAY DIFFER SLIGHTLY FROM DRAWING.

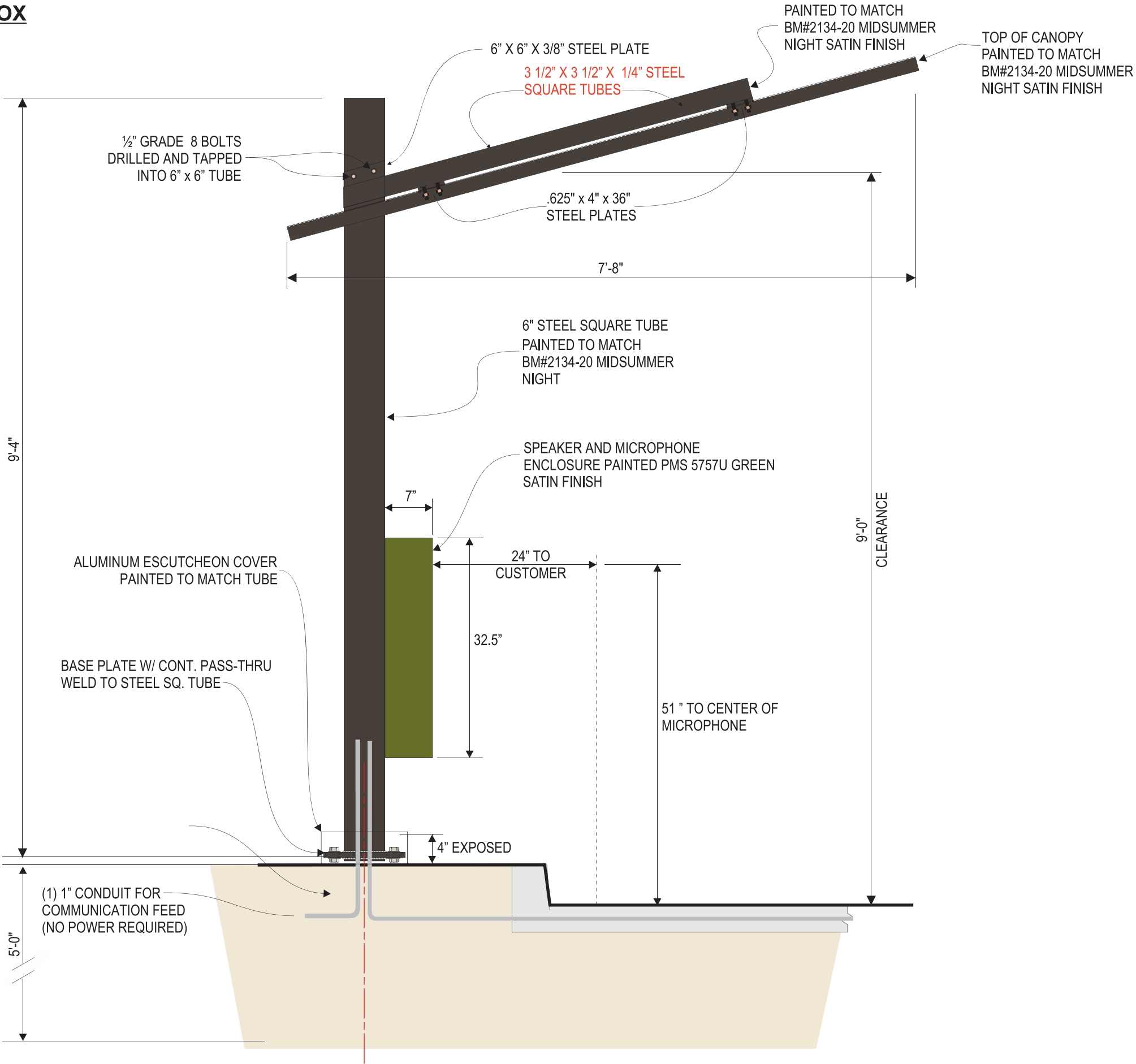


MENU CANOPY WITH SPEAKER BOX

PAN-DT-CANOPY-9466-SB

QTY. 1

EXISTING



HILTONDISPLAYS

125 HILLSIDE DRIVE • GREENVILLE SC 29607
P 800 353 9132 • F 864 242 2204
www.hiltondisplays.com

QID 18-43281

JOB NAME

Panera Bread

LOCATION

885 Hopper Ave.
Santa Rosa, CA 95403

CUSTOMER CONTACT

SALESMAN / PM

Priscilla Heilingoetter

DESIGNER

Greg Sloan

DWG. DATE

9-26-18

REV. DATE / REVISION

1-09-19 / GTS	9-11-19 / GTS
1-14-19 BS / + code page	
1-18-19 BS / various	
1-23-19 CW /tenant panel	
6-18-19 CW	9-13-19 / GTS
7-29-19 / GTS	10-17-19 / GTS

SCALE

FILE

2018/Panera Bread/Locations/
Santa Rosa CA/
18-43281

DESIGN SPECIFICATIONS ACCEPTED BY:

EST:	CLIENT:
SLS/PM:	LANDLORD:

THE INTENT OF THIS DRAWING IS TO SHOW A CONCEPTUAL REPRESENTATION OF THE PROPOSED SIGNAGE. DUE TO VARIATIONS IN PRINTING DEVICES AND SUBSTRATES, THE FINISHED PRODUCT MAY DIFFER SLIGHTLY FROM DRAWING.



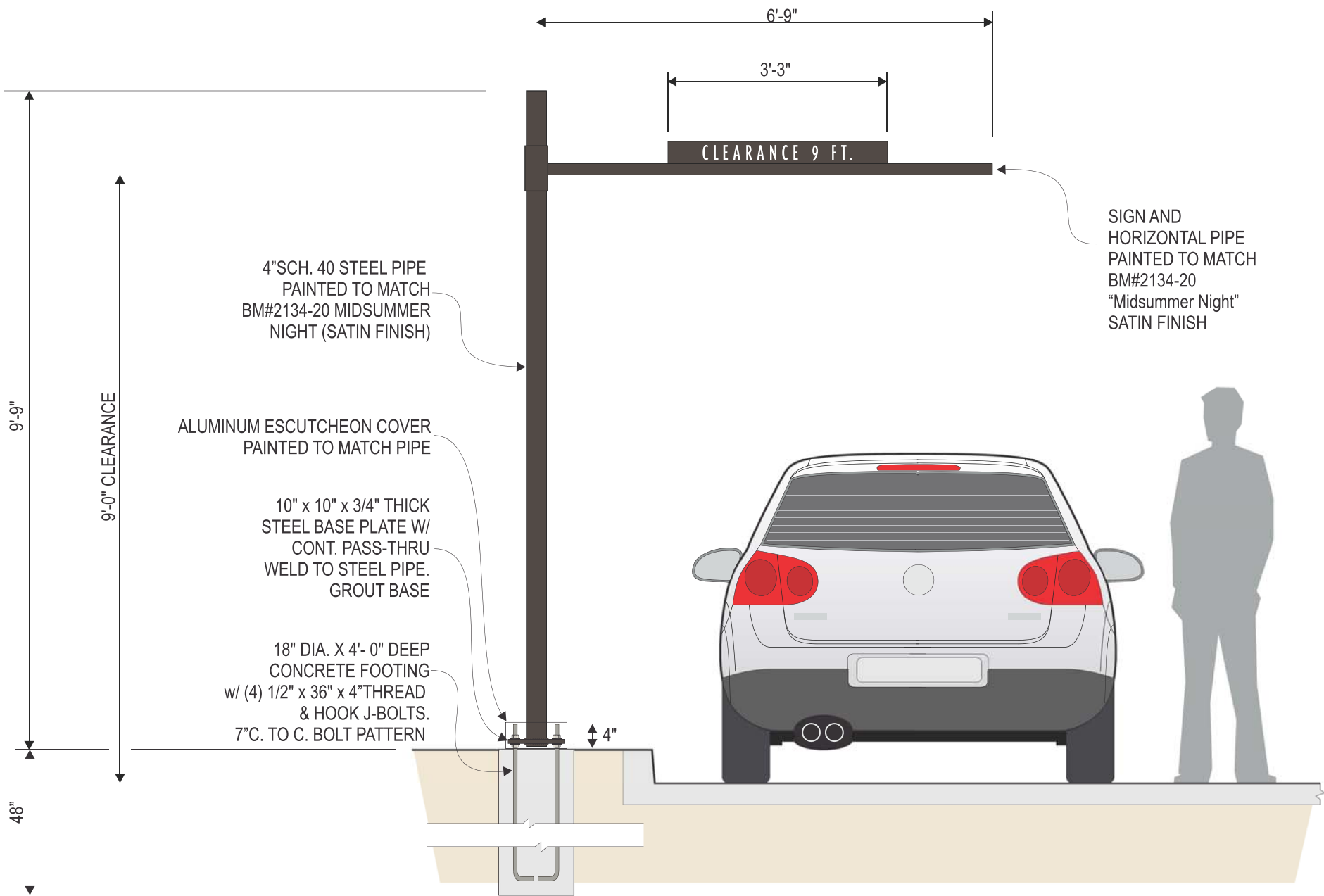
CLEARANCE BAR

PAN-DT-CB-99-C

Qty. 1

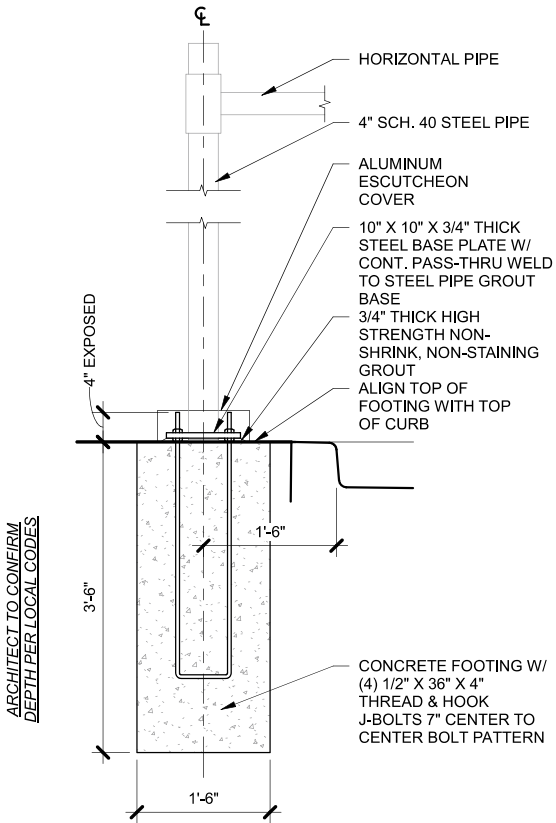
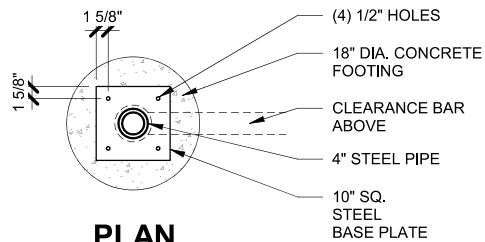
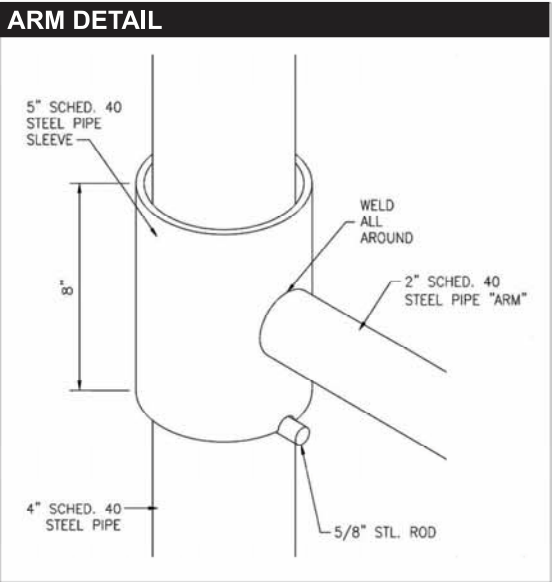
G

EXISTING



DRIVE-THRU HEIGHT CLEARANCE BAR

SCALE - 1/2" = 1'-0"



SECTION

HILTONDISPLAYS

125 HILLSIDE DRIVE • GREENVILLE SC 29607
P 800 353 9132 • F 864 242 2204
www.hiltondisplays.com

QID 18-43281

JOB NAME

Panera Bread

LOCATION

885 Hopper Ave.
Santa Rosa, CA 95403

CUSTOMER CONTACT

SALESMAN / PM

Priscilla Heilingoetter

DESIGNER

Greg Sloan

DWG. DATE

9-26-18

REV. DATE / REVISION

1-09-19 / GTS	9-11-19 / GTS
1-14-19 BS / + code page	
1-18-19 BS / various	
1-23-19 CW /tenant panel	
6-18-19 CW	9-13-19 / GTS
7-29-19 / GTS	10-17-19 / GTS

SCALE

FILE

2018/Panera Bread/Locations/
Santa Rosa CA/
18-43281

DESIGN SPECIFICATIONS ACCEPTED BY:

EST:	CLIENT:
SLS/PM:	LANDLORD:

THE INTENT OF THIS DRAWING IS TO SHOW A CONCEPTUAL REPRESENTATION OF THE PROPOSED SIGNAGE. DUE TO VARIATIONS IN PRINTING DEVICES AND SUBSTRATES, THE FINISHED PRODUCT MAY DIFFER SLIGHTLY FROM DRAWING.



MAIN MENU W/O SPEAKER **EXISTING**

PAN-18-43281-16

Qty. 1



HILTONDISPLAYS

125 HILLSIDE DRIVE • GREENVILLE SC 29607
P 800 353 9132 • F 864 242 2204
www.hiltondisplays.com

QID 18-43281

JOB NAME

Panera Bread

LOCATION

885 Hopper Ave.
Santa Rosa, CA 95403

CUSTOMER CONTACT

SALESMAN / PM

Priscilla Heilingoetter

DESIGNER

Greg Sloan

DWG. DATE

9-26-18

REV. DATE / REVISION

1-09-19 / GTS 9-11-19 / GTS

1-14-19 BS / + code page

1-18-19 BS / various

1-23-19 CW /tenant panel

6-18-19 CW 9-13-19 / GTS

7-29-19 / GTS 10-17-19 / GTS

SCALE

FILE

2018/Panera Bread/Locations/
Santa Rosa CA/
18-43281

DESIGN SPECIFICATIONS ACCEPTED BY:

EST:	CLIENT:
SLS/PM:	LANDLORD:

THE INTENT OF THIS DRAWING IS TO SHOW A CONCEPTUAL REPRESENTATION OF THE PROPOSED SIGNAGE. DUE TO VARIATIONS IN PRINTING DEVICES AND SUBSTRATES, THE FINISHED PRODUCT MAY DIFFER SLIGHTLY FROM DRAWING.



Front View

Scale: 1" = 1'-0" (11x17 paper)

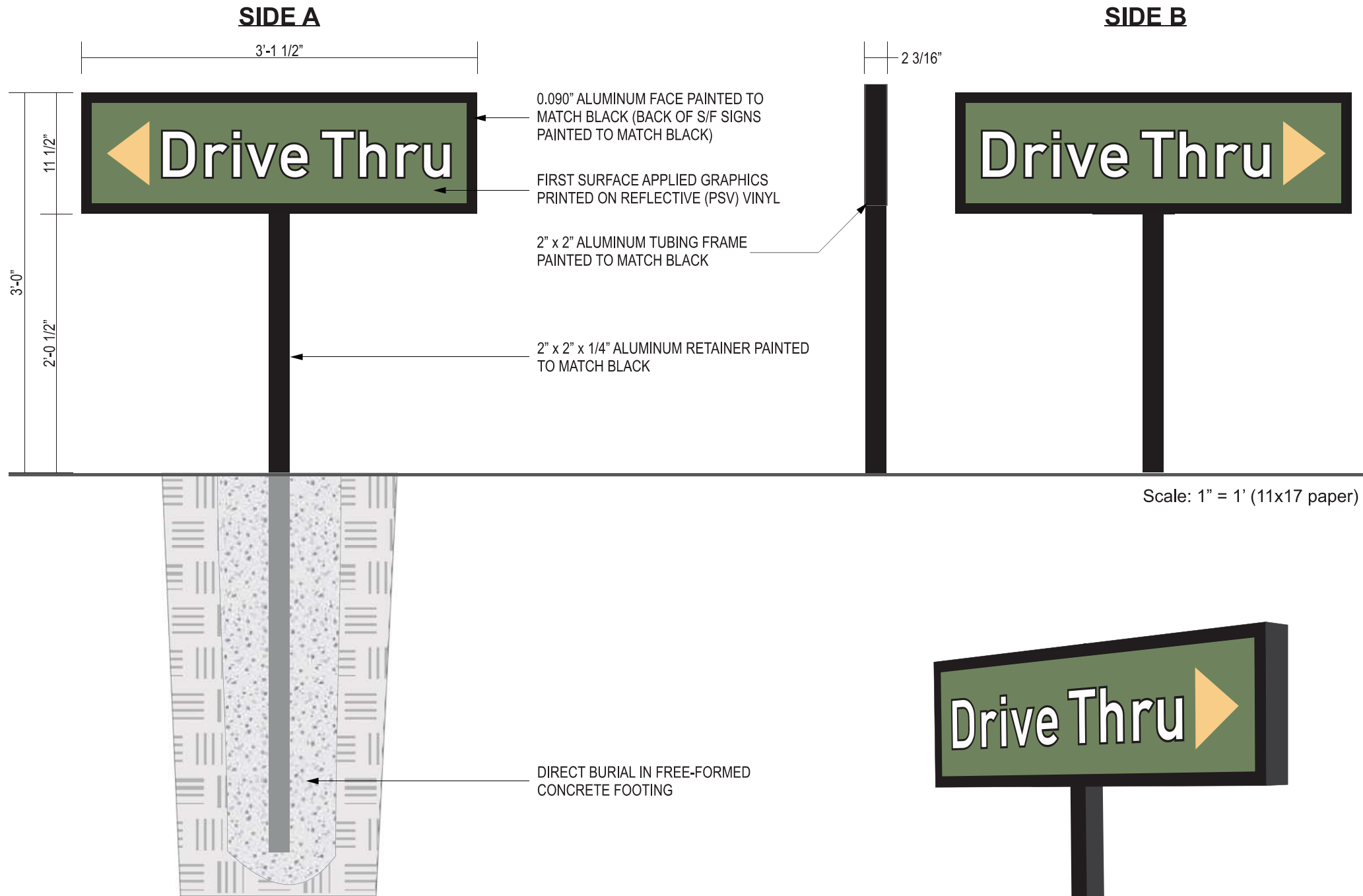
MENU BOARD RESTRICTED TO 30.0 SF PER CODE

21.0 SQ. FT.

D/F NON-ILLUMINATED DIRECTIONAL EXISTING
PAN-D1137-DT/DT-36-NIL

Qty: 1

1



COLOR LEGEND	
	PMS / PAINT
	White
	Black / 3M 3630-22
	PMS 1345 U
	ROLAND DEEP 7K-DP07K TO MATCH PMS 5757 U

HILTONDISPLAYS

125 HILLSIDE DRIVE • GREENVILLE SC 29607
P 800 353 9132 • F 864 242 2204
www.hiltondisplays.com

QID 18-43281

JOB NAME

Panera Bread

LOCATION

885 Hopper Ave.
Santa Rosa, CA 95403

CUSTOMER CONTACT

SALESMAN / PM

Priscilla Heilingoetter

DESIGNER

Greg Sloan

DWG. DATE

9-26-18

REV. DATE / REVISION

1-09-19 / GTS	9-11-19 / GTS
1-14-19 BS / + code page	
1-18-19 BS / various	
1-23-19 CW /tenant panel	
6-18-19 CW	9-13-19 / GTS
7-29-19 / GTS	10-17-19 / GTS

SCALE

FILE

2018/Panera Bread/Locations/
Santa Rosa CA/
18-43281

DESIGN SPECIFICATIONS ACCEPTED BY:

EST:	CLIENT:
SLS/PM:	LANDLORD:

THE INTENT OF THIS DRAWING IS TO SHOW A CONCEPTUAL REPRESENTATION OF THE PROPOSED SIGNAGE. DUE TO VARIATIONS IN PRINTING DEVICES AND SUBSTRATES, THE FINISHED PRODUCT MAY DIFFER SLIGHTLY FROM DRAWING.

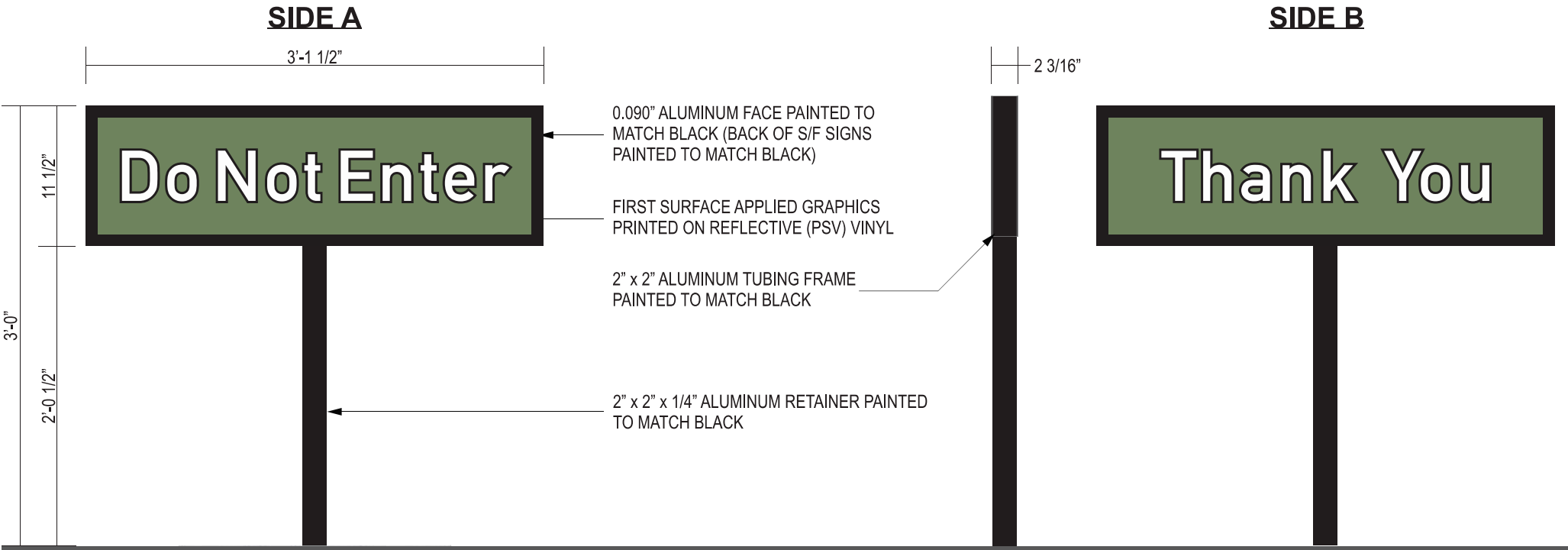


D/F NON-ILLUMINATED DIRECTIONAL EXISTING

PAN-D1137-DNE/TY-36-NIL

Qty: 1

J



Scale: 1" = 1' (11x17 paper)



COLOR LEGEND	
	PMS / PAINT
	White
	Black / 3M 3630-22
	PMS 1345 U
	ROLAND DEEP 7K-DP07K TO MATCH PMS 5757 U

HILTONDISPLAYS
125 HILLSIDE DRIVE • GREENVILLE SC 29607
P 800 353 9132 • F 864 242 2204
www.hiltondisplays.com

QID 18-43281

JOB NAME

Panera Bread

LOCATION

885 Hopper Ave.
Santa Rosa, CA 95403

CUSTOMER CONTACT

SALESMAN / PM

Priscilla Heilingoetter

DESIGNER

Greg Sloan

DWG. DATE

9-26-18

REV. DATE / REVISION

1-09-19 / GTS	9-11-19 / GTS
1-14-19 BS / + code page	
1-18-19 BS / various	
1-23-19 CW /tenant panel	
6-18-19 CW	9-13-19 / GTS
7-29-19 / GTS	10-17-19 / GTS

SCALE

FILE

2018/Panera Bread/Locations/
Santa Rosa CA/
18-43281

DESIGN SPECIFICATIONS ACCEPTED BY:

EST:	CLIENT:
SLS/PM:	LANDLORD:

THE INTENT OF THIS DRAWING IS TO SHOW A CONCEPTUAL REPRESENTATION OF THE PROPOSED SIGNAGE. DUE TO VARIATIONS IN PRINTING DEVICES AND SUBSTRATES, THE FINISHED PRODUCT MAY DIFFER SLIGHTLY FROM DRAWING.



TRAFFIC CONTROL SIGN PANEL(S) EXISTING

Qty: As Noted

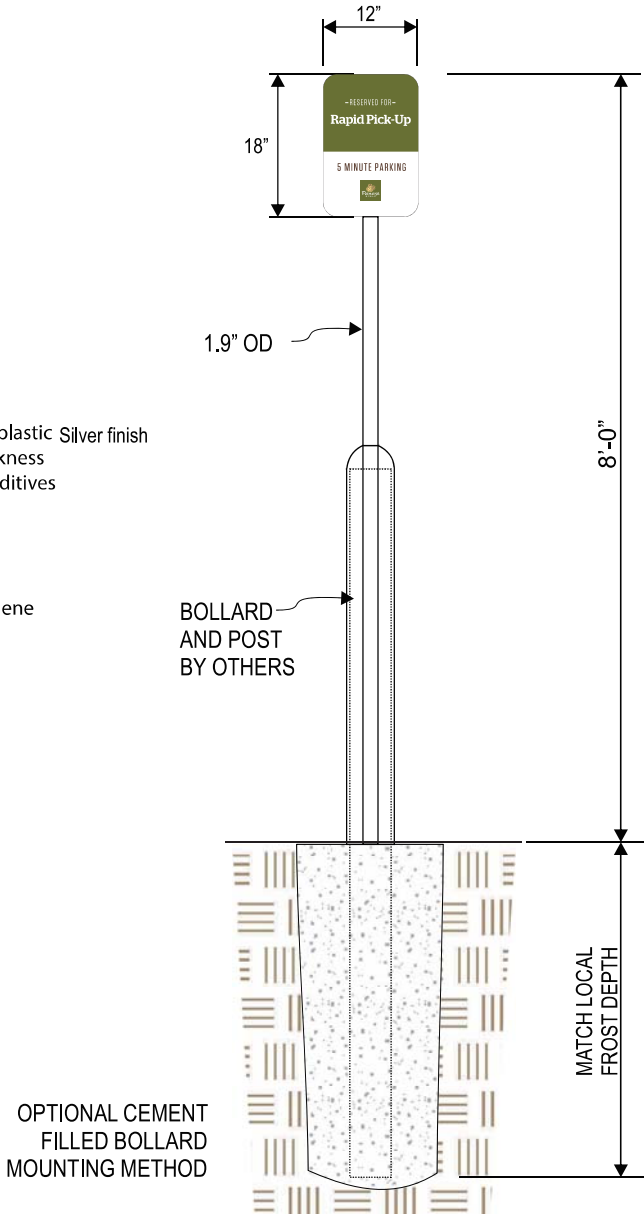
K
L

SPECIFICATIONS

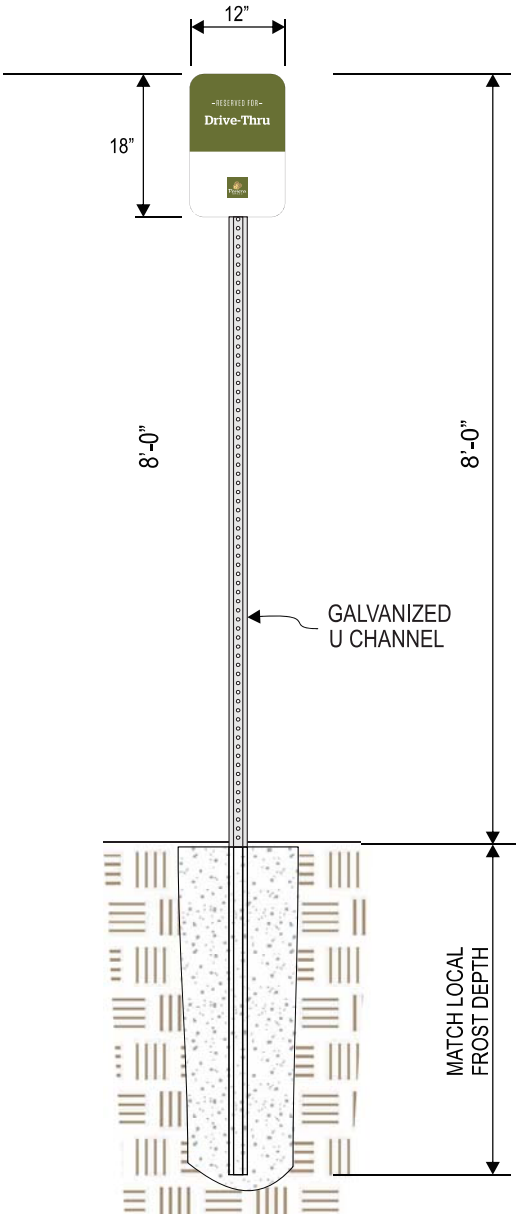
Sign Post Material:
1.66" O.D. 14 Gauge Sign Post,
Hi-Density Polyethylene Thermoplastic Silver finish
1.90" O.D. 1/8" Nominal Wall Thickness
w/Ultra-Violet and Anti-Static Additives
Plastic Cap
Standard 3/8" Holes

Bollard Cover:
Dome-Top - Lo-Density Polyethylene
Thermoplastic
1/4" Nominal Wall Thickness
Refer to architectural
drawings for color finish

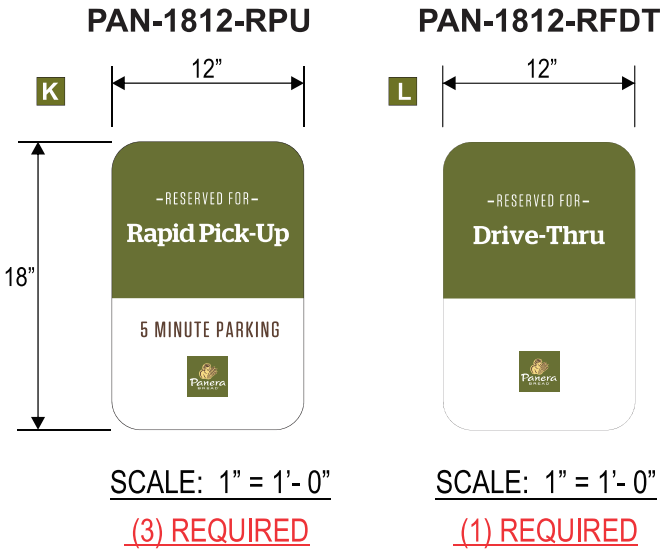
Bollard Pipe:
6" schedule 40 steel pipe



SCALE: 1/2"=1'-0"
(3) S/F SIGNS REQUIRED



SCALE: 1/2"=1'-0"
(1) S/F SIGN REQUIRED



SINGLE-SIDED TRAFFIC CONTROL SIGNS:

- WHITE .080 ALUMINUM PANELS (DO NOT PRE-DRILL HOLES)
- REFLECTIVE, DIGITALLY PRINTED VINYL GRAPHICS WITH CLEAR OVERLAMINATE
- 10' HEAVY DUTY U-IRON SUPPORT POSTS
- FREE FORMED CONCRETE FOOTINGS
- BOLLARDS AND POSTS BY OTHERS

HILTONDISPLAYS
125 HILLSIDE DRIVE • GREENVILLE SC 29607
P 800 353 9132 • F 864 242 2204
www.hiltondisplays.com

QID 18-43281

JOB NAME

Panera Bread

LOCATION

885 Hopper Ave.
Santa Rosa, CA 95403

CUSTOMER CONTACT

SALESMAN / PM

Priscilla Heilingoetter

DESIGNER

Greg Sloan

DWG. DATE

9-26-18

REV. DATE / REVISION

1-09-19 / GTS	9-11-19 / GTS
1-14-19 BS / + code page	
1-18-19 BS / various	
1-23-19 CW /tenant panel	
6-18-19 CW	9-13-19 / GTS
7-29-19 / GTS	10-17-19 / GTS

SCALE

FILE

2018/Panera Bread/Locations/
Santa Rosa CA/
18-43281

DESIGN SPECIFICATIONS ACCEPTED BY:

EST:	CLIENT:
SLS/PM:	LANDLORD:

THE INTENT OF THIS DRAWING IS TO SHOW A CONCEPTUAL REPRESENTATION OF THE PROPOSED SIGNAGE. DUE TO VARIATIONS IN PRINTING DEVICES AND SUBSTRATES, THE FINISHED PRODUCT MAY DIFFER SLIGHTLY FROM DRAWING.



TENANT PANELS **EXISTING**

PAN-18-43281-31

Qty. 2

M



FRONT VIEW

SCALE: 3/4" = 1'-0"

ROUTED ALUMINUM TENANT PANELS FOR EXISTING MONUMENT

ROUTED .125 ALUMINUM FACES WITH WHITE ACRYLIC BACKUP PANELS
FIRST SURFACE APPLIED DIGITALLY PRINTED VINYL GRAPHICS

E3XPOSED FASTENERS ON FACES PAINTED TO MATCH FACES.
SUPPLY BROWN, GREEN, AND WHITE TOUCH UP PAINT WITH FACES.

FASTENERS LOCATED 1/2" FROM EDGE OF FACES TO C.L. OF FASTENERS.

SIDE VIEW



COLOR LEGEND	
	PMS/PAINT
	PMS 5757 CP
	PMS 7403 CP
	PMS 476 CP
	MP43251 Toque White
	Black

HILTONDISPLAYS

125 HILLSIDE DRIVE • GREENVILLE SC 29607

P 800 353 9132 • F 864 242 2204

www.hiltondisplays.com

QID 18-43281

JOB NAME

Panera Bread

LOCATION

885 Hopper Ave.
Santa Rosa, CA 95403

CUSTOMER CONTACT

SALESMAN / PM

Priscilla Heilingoetter

DESIGNER

Greg Sloan

DWG. DATE

9-26-18

REV. DATE / REVISION

1-09-19 / GTS	9-11-19 / GTS
1-14-19 BS / + code page	
1-18-19 BS / various	
1-23-19 CW /tenant panel	
6-18-19 CW	9-13-19 / GTS
7-29-19 / GTS	10-17-19 / GTS

SCALE

FILE

2018/Panera Bread/Locations/
Santa Rosa CA/
18-43281

DESIGN SPECIFICATIONS ACCEPTED BY:

EST:	CLIENT:
SLS/PM:	LANDLORD:

THE INTENT OF THIS DRAWING IS TO SHOW A CONCEPTUAL REPRESENTATION OF THE PROPOSED SIGNAGE. DUE TO VARIATIONS IN PRINTING DEVICES AND SUBSTRATES, THE FINISHED PRODUCT MAY DIFFER SLIGHTLY FROM DRAWING.

UL

Underwriters Laboratories Inc.

DRY

DAMP

WET

X