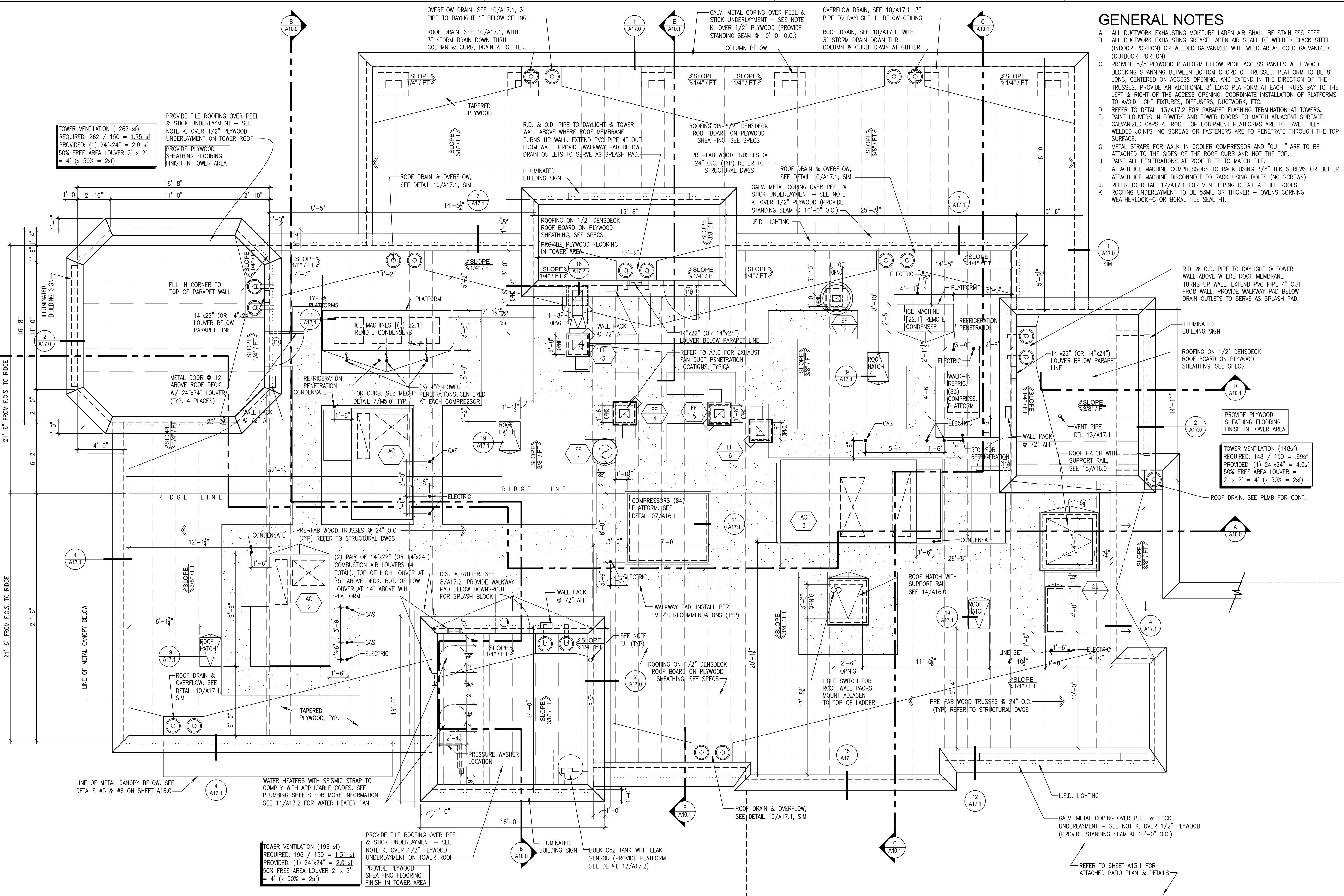


GENERAL NOTES

- A. ALL DUCTWORK EXHAUSTING MOISTURE LADEN AIR SHALL BE STAINLESS STEEL.
- B. ALL DUCTWORK EXHAUSTING GREASE LADEN AIR SHALL BE WELDED BLACK STEEL (INDOOR PORTION) OR WELDED GALVANIZED WITH WELD AREAS COLD GALVANIZED (OUTDOOR PORTION).
- C. PROVIDE 5/8" PLYWOOD PLATFORM BELOW ROOF ACCESS PANELS WITH WOOD BLOCKING SPANNING BETWEEN BOTTOM CHORD OF TRUSSES. PLATFORM TO BE 8' LONG, CENTERED ON ACCESS OPENING, AND EXTEND IN THE DIRECTION OF THE TRUSSES. PROVIDE AN ADDITIONAL 8' LONG PLATFORM AT EACH TRUSS BAY TO THE LEFT & RIGHT OF THE ACCESS OPENING. COORDINATE INSTALLATION OF PLATFORMS TO AVOID LIGHT FIXTURES, DIFFUSERS, DUCTWORK, ETC.
- D. REFER TO DETAIL 13/A17.2 FOR PARAPET FLASHING TERMINATION AT TOWERS.
- E. PAINT LOUVERS IN TOWERS AND TOWER DOORS TO MATCH ADJACENT SURFACE.
- F. GALVANIZED CAPS AT ROOF TOP EQUIPMENT PLATFORMS ARE TO HAVE FULLY WELDED JOINTS. NO SCREWS OR FASTENERS ARE TO PENETRATE THROUGH THE TOP SURFACE.
- G. METAL STRAPS FOR WALK-IN COOLER COMPRESSOR AND "CU-1" ARE TO BE ATTACHED TO THE SIDES OF THE ROOF CURB AND NOT THE TOP.
- H. PAINT ALL PENETRATIONS AT ROOF TILES TO MATCH TILE.
- I. ATTACH ICE MACHINE COMPRESSORS TO RACK USING 3/8" TEK SCREWS OR BETTER. ATTACH ICE MACHINE DISCONNECT TO RACK USING BOLTS (NO SCREWS).
- J. REFER TO DETAIL 17/A17.1 FOR VENT PIPING DETAIL AT TILE ROOFS.
- K. ROOFING UNDERLAYMENT TO BE 5.3ML OR THICKER - OWENS CORNING WEATHERLOCK-G OR BORAL TILE SEAL HT.



PLAN NORTH
1 ROOF PLAN
A6.0 SCALE: 1/4" = 1'-0"

