

West Coast Self Storage Concept Design Review

970 Piner Rd.

January 21, 2021

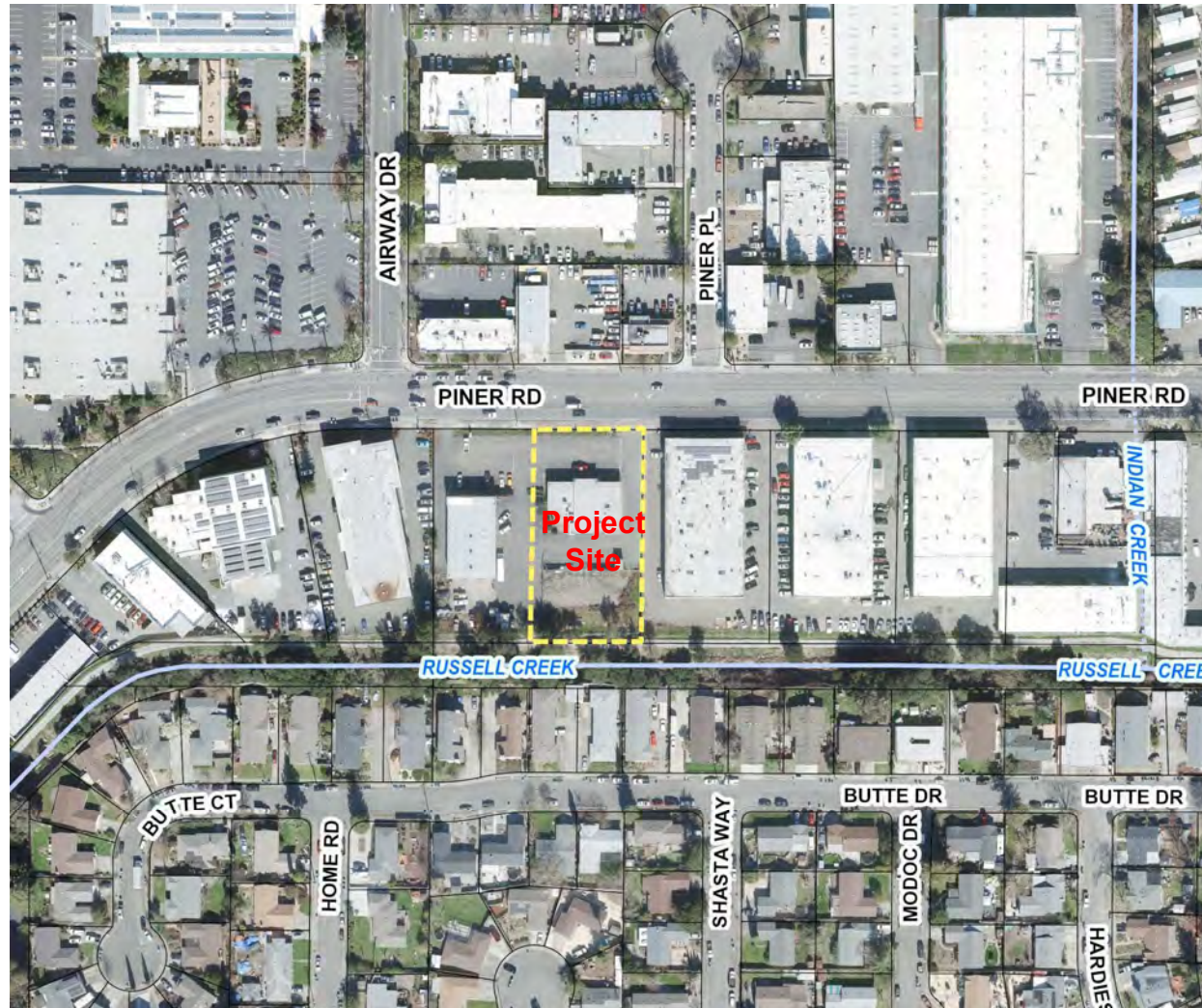
Monet Sheikhal
City Planner
Planning and Economic Development

Project Description

- ± 67,500 square foot
- 3-story
- ± 36' Height
- 8 Parking Spaces



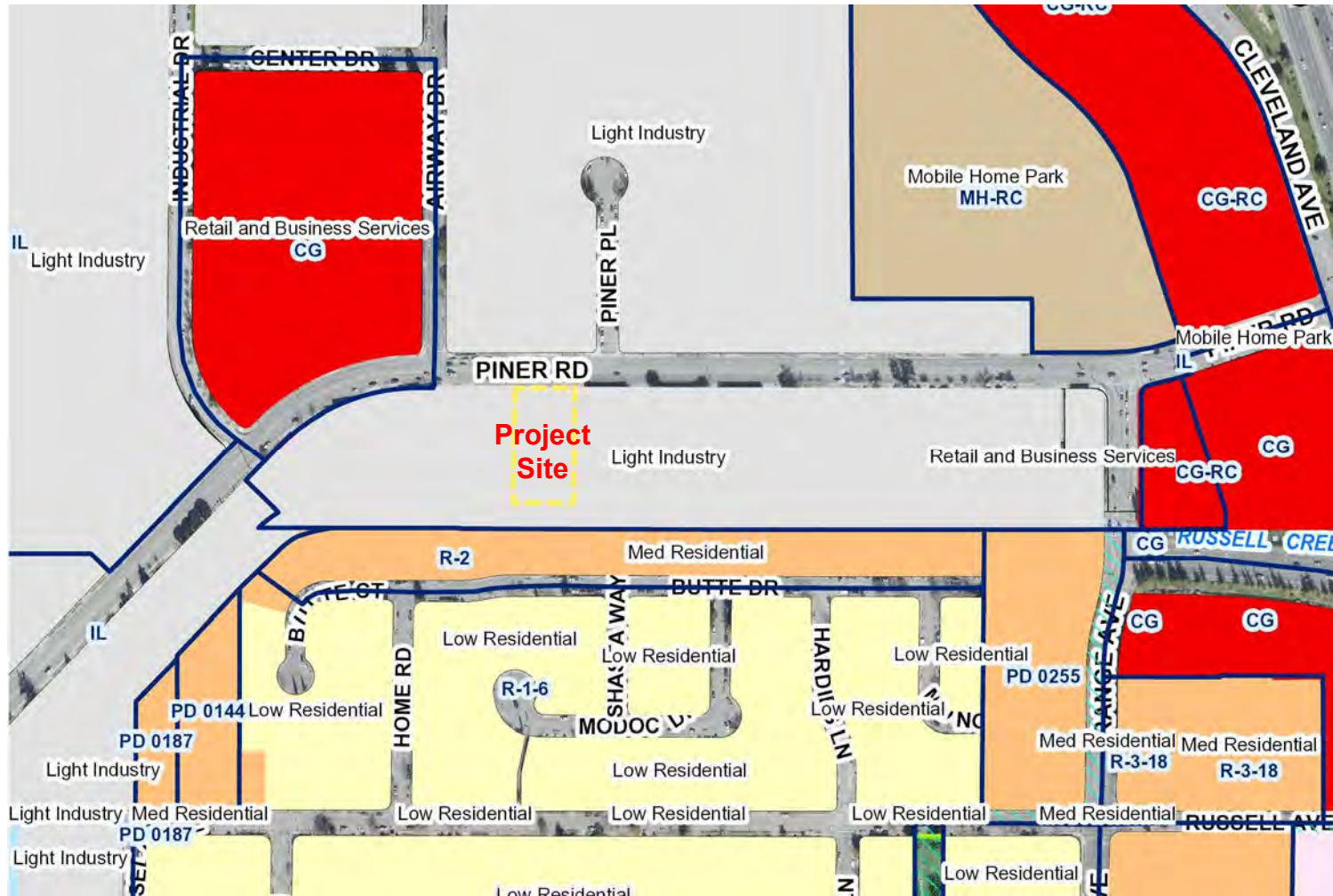
Project Location 970 Piner Rd



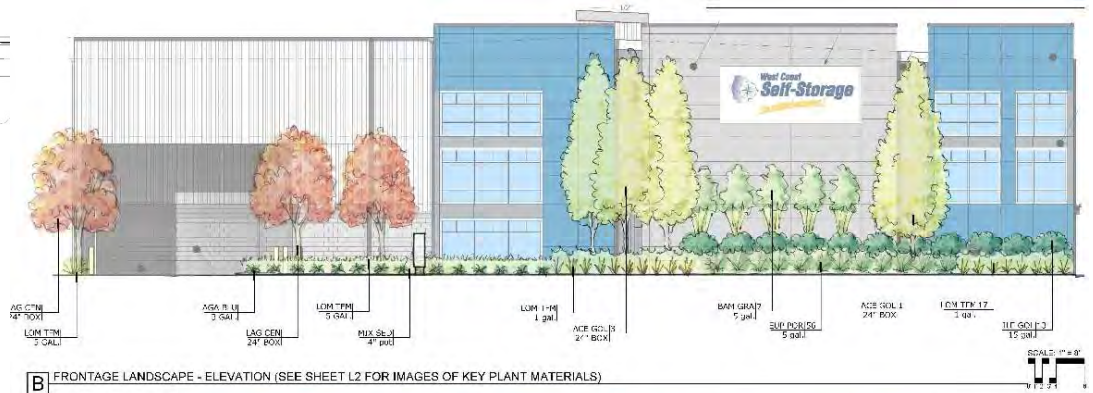
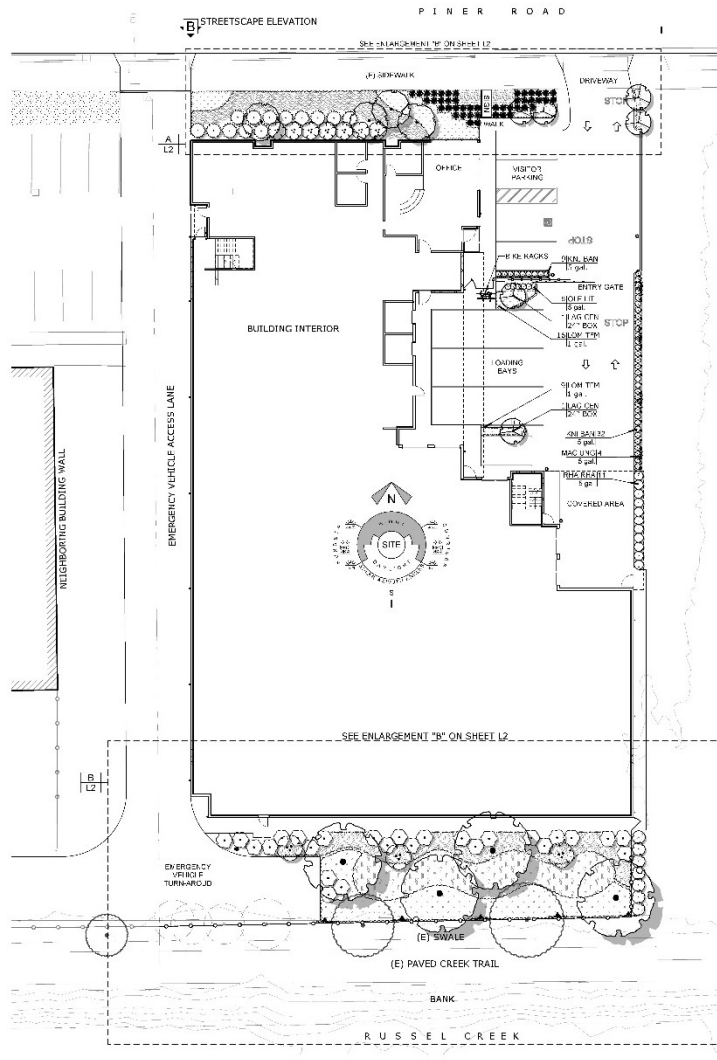
Project Location 970 Piner Rd

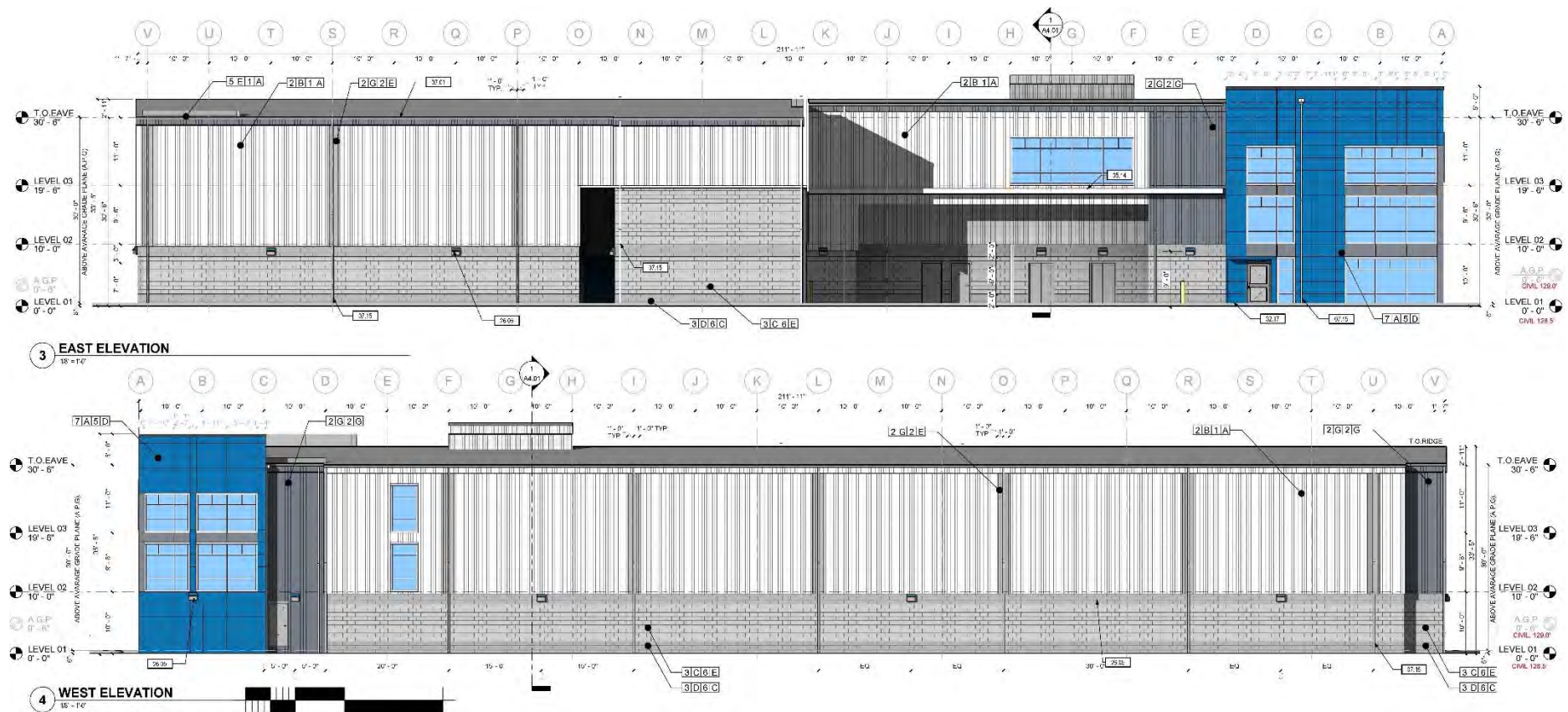


General Plan & Zoning 970 Piner Rd



Conceptual Site Plan with Landscaping





It is recommended by the Planning and Economic Development Department that the Design Review Board provide comments and direction for the West Coast Self Storage project.

Questions

Monet Sheikhal
City Planner
Planning and Economic Development
msheikhali@srcity.org
(707) 543-4698

