

West Coast Self Storage

970 Piner Road

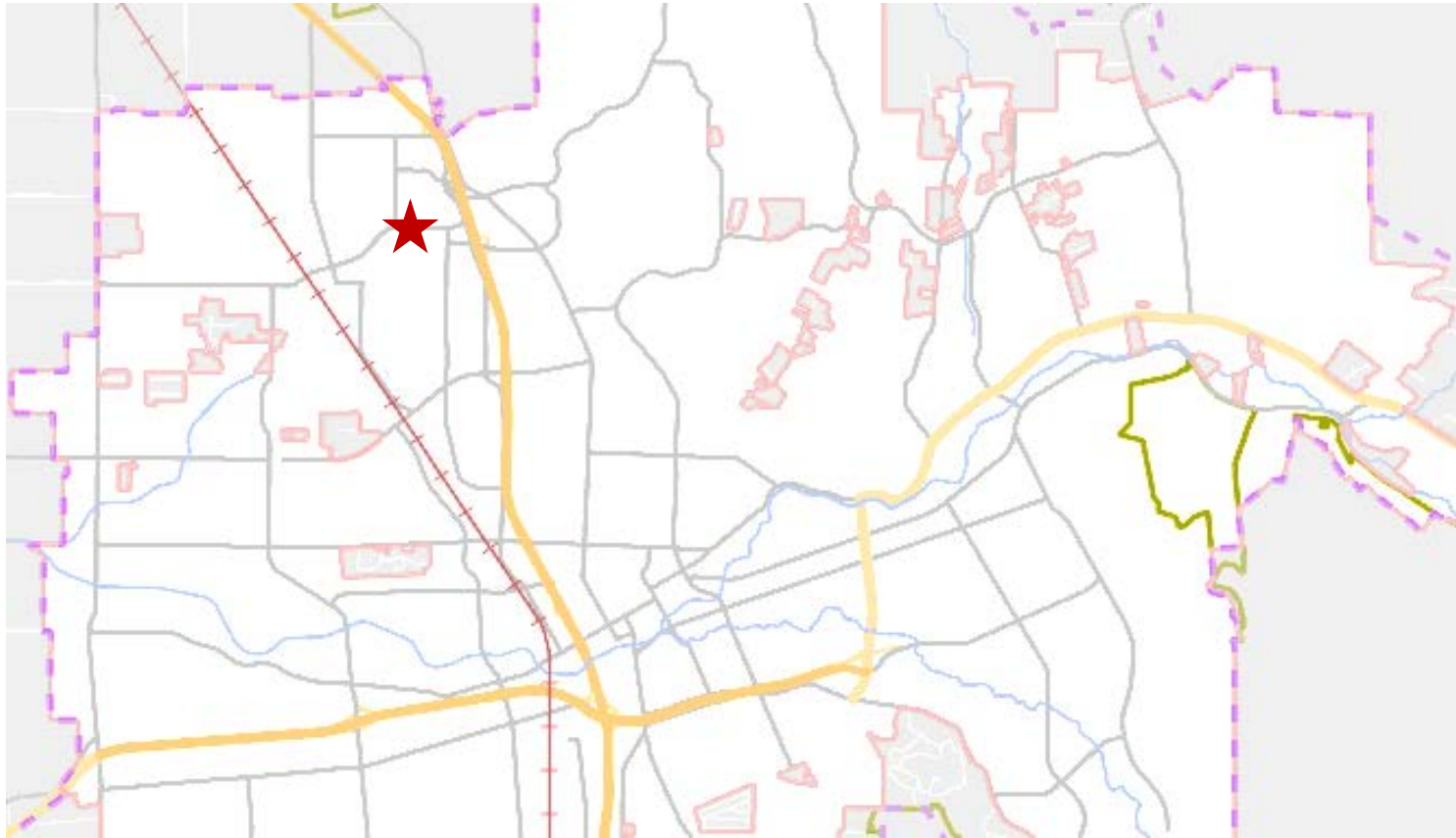
April 22, 2021

Monet Sheikhali, City Planner
Planning and Economic Development

- Major Design Review for a development of a 3-story, approximately \pm 66,200 square foot storage building on a 0.95-acre parcel, located adjacent to Russell Creek. The project includes demolition of an existing structure and site improvements.

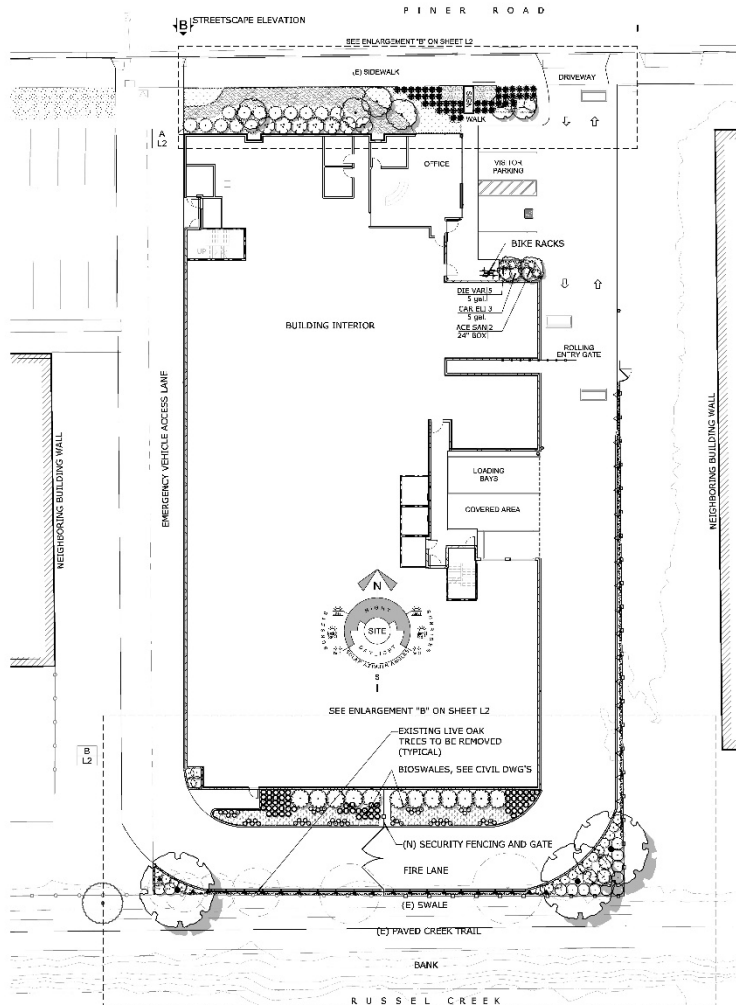
Project Location

970 Piner Rd

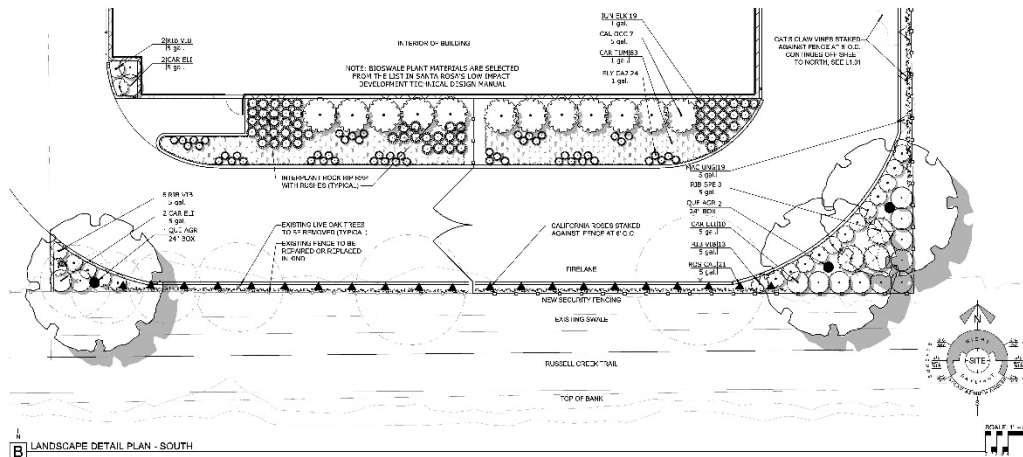
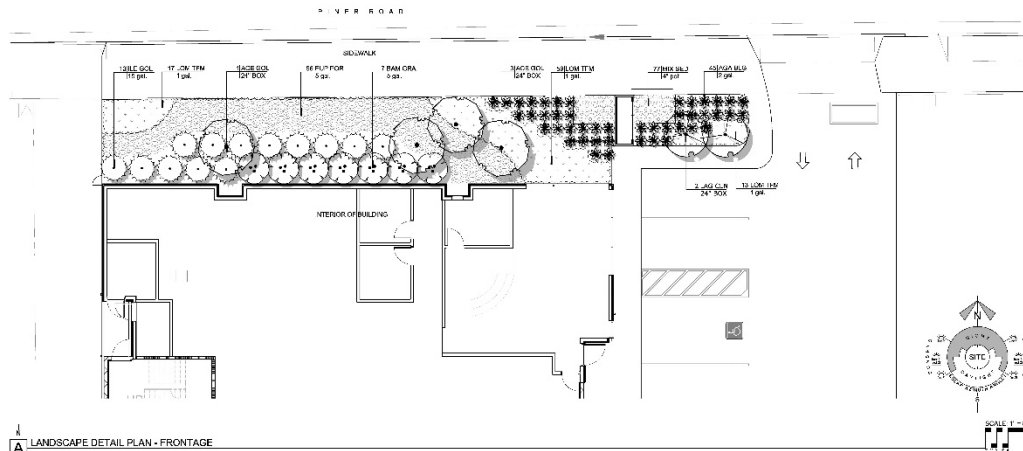




970 Piner Rd Site Plan



970 Piner Rd Site Plan



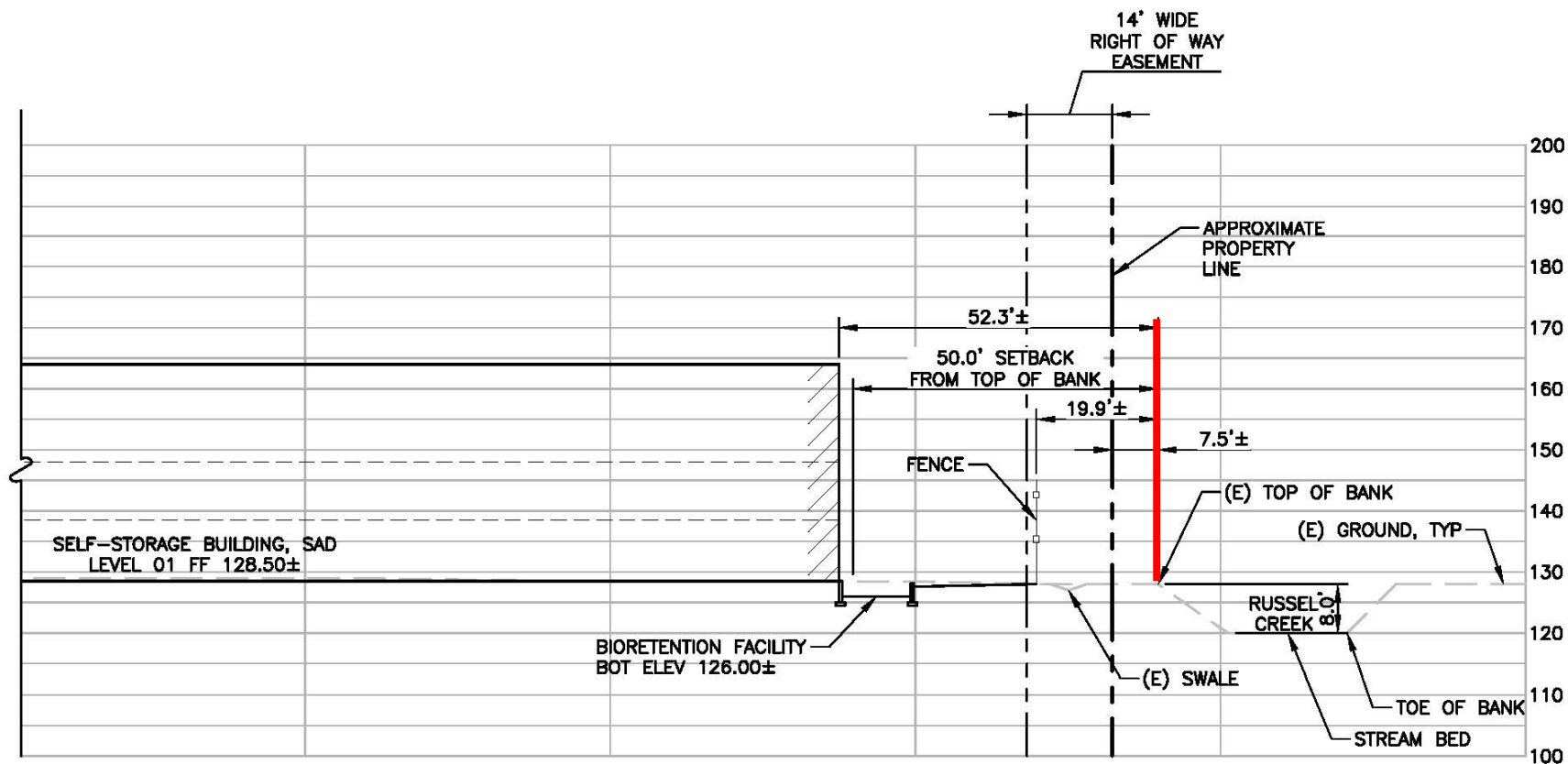
PLANT LEGEND

| SYMBOL | COMMON NAME | ROMANICAL NAME | SIZE | QTY | |
|--------|-------------|------------------------------|--------------------------------------|---------------|-----------|
| | ACE SAN | SARGO KAGI JAPANESE MAPLE | ACE PALM/UM SARGO KAGI | 24\"/>2 | |
| | ACE GO. | GOLDEN ARMSTRONG MAPLE | ACE RUSSEL/UM ARMSTRONG GOLD | 24\"/>4 | |
| | JAG CON | COLLIER GRACE MYRTLE | LACROSTICIA NICA 'CENTINELLA SPIRIT' | 24\"/>2 | |
| | DAN AGN | COAST LANE OAK | QUERCUS AGNOLA | 24\"/>2 | |
| | LEDA | COMMON NAME | ROMANICAL NAME | SIZE QTY | |
| | ACA B.O. | BLUE GLOW AGAVE | AGAVE 'X' BLUE GLOW | 2 GAL | 10 |
| | 3AM GFA | SLENDER WEAVER'S BAMBOO | BAMBUSA TUDILIS 'ORACUS' | 3 GAL | 7 |
| | LA-LOC | SPICE ALBUSH | CHALCOPHILUS OCCIDENTALIS | 5 GAL | 12 |
| | LA-ELI | SLUGGISH BUSH ANA-YOTE | CARPENTERIA CALIFORNICA 'SLUGGISH' | 5 GAL | 17 |
| | TEF VAR | VARIFOLIA-TO-AFRICAN RIS | ODONDIS VIBRATA 'VARIFOLIA' | 5 GAL | 5 |
| | TY CAT | CANYON PRINCE OF WILDS RIF | RYNUS CONCORDATUS 'CANYON PRINCE' | 1 GAL | 50 |
| | LE GOL | COLD COAST HOLLY | ILEX AGROPOLY 'COLD COAST TM' | 15 GAL | 15 |
| | JUN CLK | SPREADING RUBI | ABRUS PATENS 'CLK CLK' | 1 GAL | 28 |
| | WIC LING | YELLOW HUMBLE YIN | MACHALUNA LINGUS CATI | 5 GAL | 18 |
| | HE SFE | HOLBORN FLOWERING GOKKUBERRY | HEBIS SPICULOSUM | 5 GAL | 2 |
| | HE VIE | EVERGREEN CURRANT | HEBIS VIBRATOLY | 5 GAL | 21 |
| | NOB CAL | CALIFORNIA WILD ROSE | ROSA CALIFORNICA | 5 GAL | 21 |
| SYMBOL | COMMON NAME | ROMANICAL NAME | SIZE | SPACING | QTY |
| | CAT TOL | FOOTBALL SPEED | CAMPYLOPSIS TOL | 1 GAL | 12\"/>170 |
| | SUP POR | PORTULACAE VELVET SPURGE | EUPHORBIA CHAMPENS PORTULACAE VELVET | 5 GAL | 36\"/>56 |
| | JUN TRN | LITTLE LIVE MIST RUSH | LOWLANDIA 'LITTLE LIVE' | 1 GAL | 24\"/>85 |
| | WIK SMO | MIRAL SMOG AND SUCCOLANIS | VIVIPUS SMOG AND SUCCOLANIS | 4\"/>12\"/>77 | |



PRELIMINARY LANDSCAPE PLANS - FINAL DESIGN REVIEW

Creek Setback



CREEK CROSS SECTION

SCALE: 1"=20' HORIZ
1"=10' VERT

3



Santa Rosa Citywide Creek Master Plan

Planning Watershed Area: Paulin and Piner Creeks



Monet Sheikhali, City Planner
Planning and Economic Development
msheikhali@srcity.org
(707) 543-4698

