



City of Santa Rosa  
Planning & Economic  
Development Department  
Mar 12, 2021  
RECEIVED

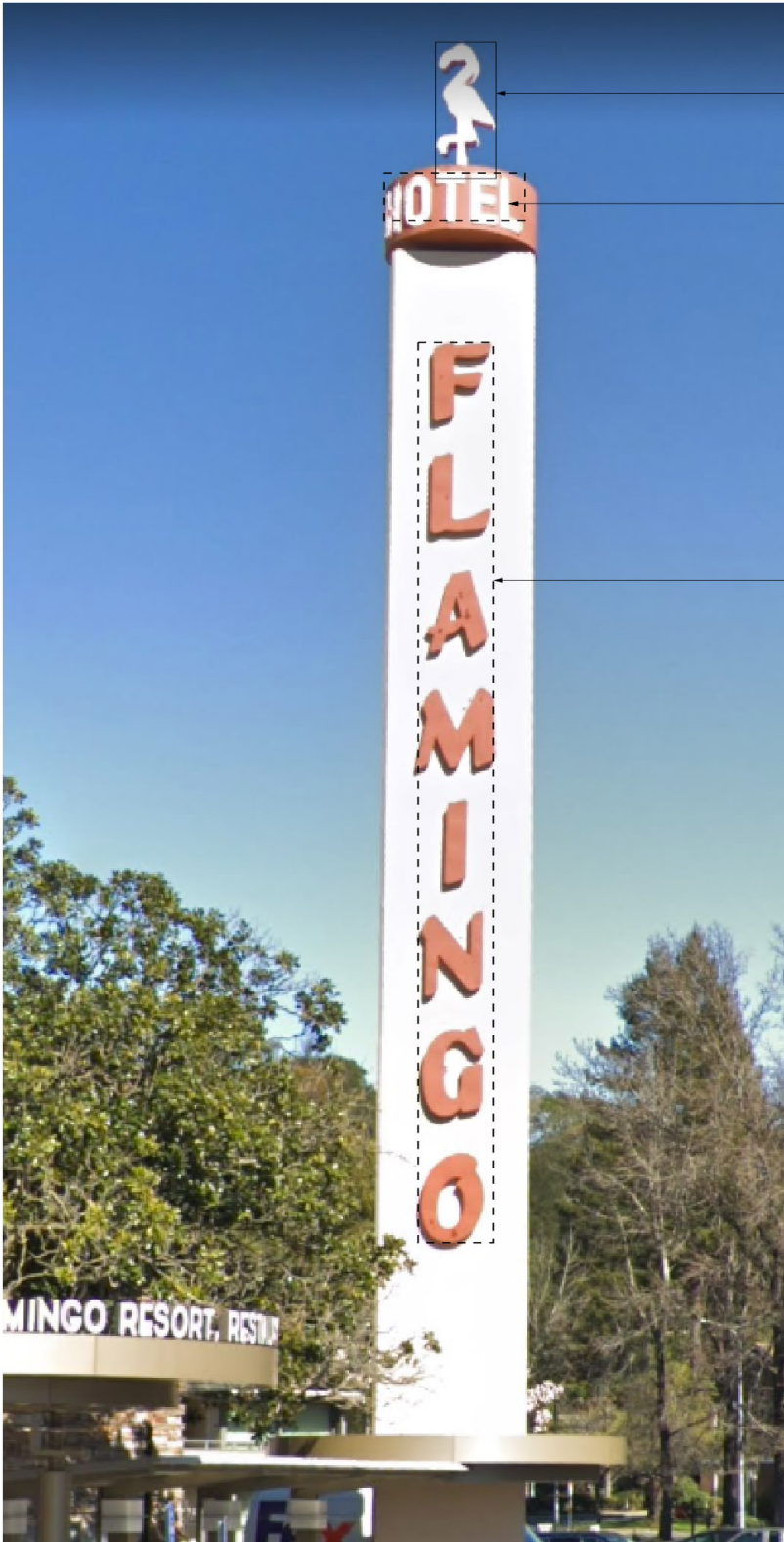
# Flamingo Resort & Spa

2777 4th Street  
Santa Rosa, CA

Sheet 0.1	Cover Page
Sheet 0.2	Existing Signs
Sheet 1	Sign A - Elevation & Specifications
Sheet 2	Sign B.1 & B.2 - Elevation & Specifications
Sheet 2.1	Sign B.1 & B.2 - Locations
Sheet 3	Sign C - Elevation & Specifications
Sheet 7	Sign K - Photo of existing & new location
Sheet 10	Sign H - Elevation & Specifications
Sheet 13	Site Plan, Square Footage Summary



**Arrow Sign Company**  
1051 46th Avenue - Oakland, CA 94601  
(510) 533-7693  
Licensed in California, Nevada, Washington, Arizona and Hawaii  
CA License 314794 - C45 Electrical Signs / C51 Structural Steel / C61 Specialty-Cranes



EXISTING TOWER SIGN

SCALE: 3/32" = 1' 0"

540 square feet total

28 square feet  
x 2 = 56 sq. ft.

30 square feet  
x 2 = 60 sq. ft.

212 square feet  
x 2 = 424 sq. ft



**K** EXISTING SIGN (TO BE RELOCATED) NOT TO SCALE  
7 square feet



**K.2** EXISTING SIGN NOT TO SCALE  
7 square feet



**K.1** EXISTING SIGN NOT TO SCALE  
7 square feet



**K.3** EXISTING SIGN NOT TO SCALE  
7 square feet



1051 46th Avenue  
Oakland, Ca 94601  
T. 510.533.7693  
F. 510.533.0815  
www.arrowsigncompany.com

Project  
**Flamingo Resort & Spa**  
2777 4th St  
Santa Rosa, CA

Date:  
6-2-20

Sales:  
☐ Steve Jones

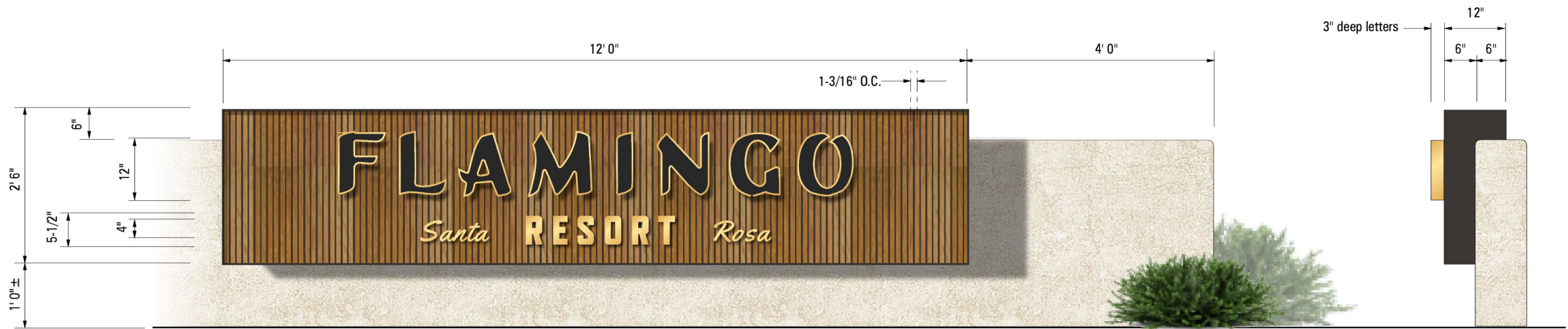
Design:  
☐ Andre C.

File Name/Location:  
2020/F/Flamingo Resort 2

Rev.	Date	Description
A	3-11-21	Revise tower square footage

Customer Approval

This drawing is a representation of colors and may not accurately depict final color of product. Refer to paint swatch or material samples for color reference.  
**ALL RIGHTS RESERVED**  
This is an original unpublished drawing prepared for you by Arrow Sign Co. in a sign program designed for your business. It is not to be shown to anyone outside of your organization nor to be reproduced, copied or exhibited in any fashion.



**A SIGN ELEVATION**

SCALE: 1/2" = 1'-0"

One (1) single-faced, illuminated sign mounted to existing wall

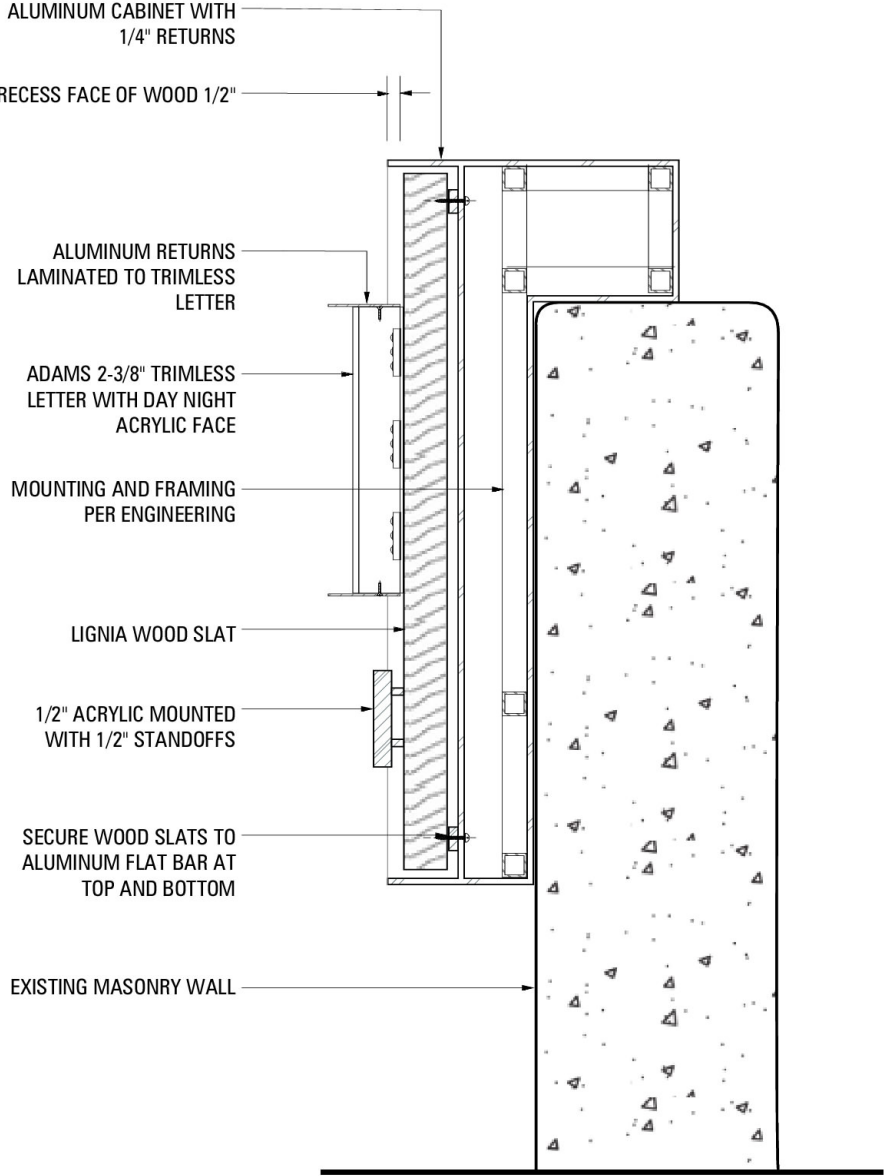
ITEM	DESCRIPTION	VENDOR	SPECIFICATION
Cabinet	Aluminum	Matthews	To match Sherwin Williams "Urbane Bronze" SW7048, satin finish
Background	Wood Slat	Lignia	22mm x 50mm, spaced at 10 slats per lineal foot (approx. 1-3/16" O.C. natural finish with clear sealer (wood provided by customer)
Flamingo (inner returns)	Prefinished aluminum	Adams	Trimless, 2-3/8"
Flamingo (outer returns)	Aluminum	Matthews	Inca Gold Metallic MP20503, satin finish
Flamingo Faces	Acrylic	Acrylite	Day/Night acrylic #9K004
Flamingo Illumination	LED	Sloan	Prism Mini 3000K or eqaul
Lower Copy	1/2" acrylic, 1/2" standoff	Matthews	Inca Gold Metallic MP20503, satin finish

**GENERAL NOTES**

1. All work is compliant to 2019 CBC and Part 600 CEC 2019 codes
2. (1) 120v 20amp dedicated circuit required; existing or provided by others
3. Square Footage: 30 sq. ft.



NIGHT ELEVATION



**A SIGN SECTION**

SCALE: 1-1/2" = 1'-0"



1051 46th Avenue  
Oakland, Ca 94601  
T. 510.533.7693  
F. 510.533.0815  
www.arrowsigncompany.com

**Flamingo Resort & Spa**

2777 4th St  
Santa Rosa, CA

Date:  
6-2-20

Sales:  
☐ Steve Jones

Design:  
☐ Andre C.

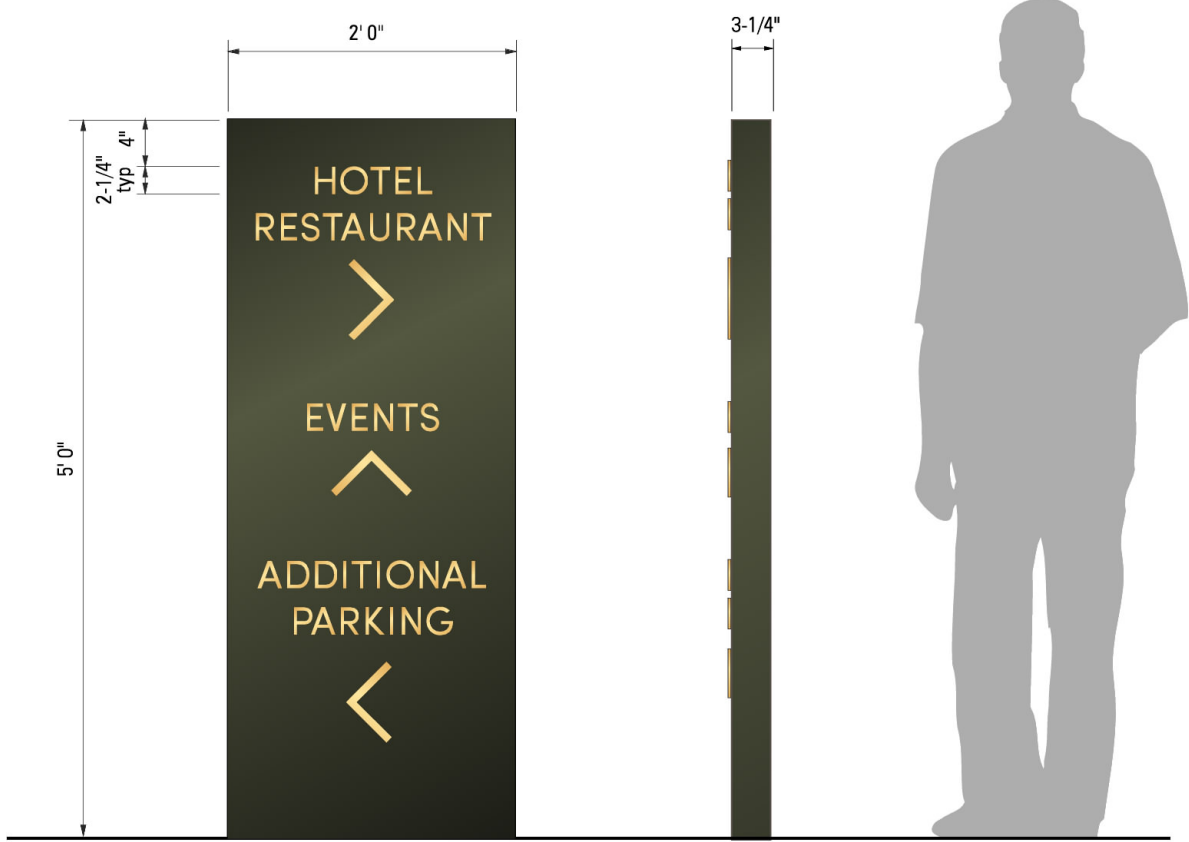
File Name/Location:  
2020/F/Flamingo Resort 2

Rev.	Date	Description
C	9-18-20	Revise overall design
D	9-22-20	Change font
E	10-16-20	Change small copy to alum.
F	11-13-20	Change color spec
G	12-31-20	Revise section to match shops
H	1-8-21	Correct lower copy spec
I	3-10-21	Add General Note

**Customer Approval**

This drawing is a representation of colors and may not accurately depict final color of product. Refer to paint swatch or material samples for color reference.

**ALL RIGHTS RESERVED**  
This is an original unpublished drawing prepared for you by Arrow Sign Co. in a sign program designed for your business. It is not to be shown to anyone outside of your organization nor to be reproduced, copied or exhibited in any fashion.



**B.1 SIGN ELEVATION**

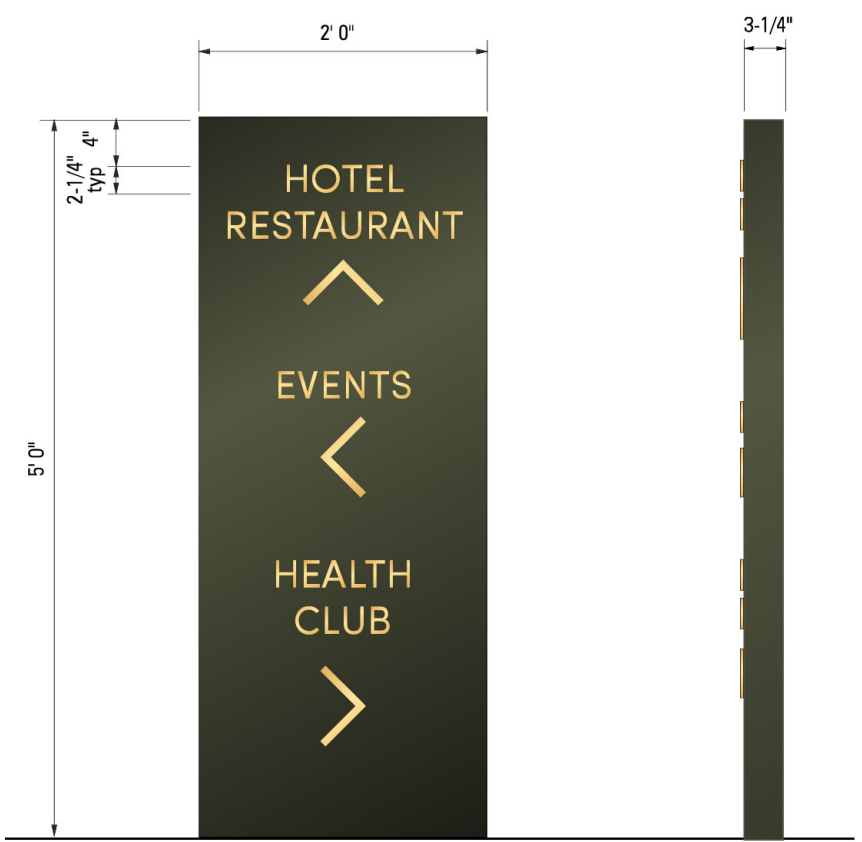
SCALE: 3/4" = 1'-0"

Manufacture and install one (1), single-faced, non-illuminated freestanding sign as shown.

ITEM	DESCRIPTION	VENDOR	SPECIFICATION
Cabinet	Aluminum	Matthews	To match Sherwin Williams "Urbane Bronze" SW7048, satin finish
Copy and Graphics	1/4" aluminum	Matthews	Inca Gold Metallic MP20503, satin finish
Note	Sign to have Matthews satin clearcoat		

**GENERAL NOTES**

1. All work is compliant to 2019 CBC codes
2. Square Footage: 10 sq. ft.



**B.2 SIGN ELEVATION**

SCALE: 3/4" = 1'-0"

Manufacture and install one (1), single-faced, non-illuminated freestanding sign as shown.

ITEM	DESCRIPTION	VENDOR	SPECIFICATION
Cabinet	Aluminum	Matthews	To match Sherwin Williams "Urbane Bronze" SW7048, satin finish
Copy and Graphics	1/4" aluminum	Matthews	Inca Gold Metallic MP20503, satin finish
Note	Sign to have Matthews satin clearcoat		

**GENERAL NOTES**

1. All work is compliant to 2019 CBC codes
2. Square Footage: 10 sq. ft.



1051 46th Avenue  
Oakland, Ca 94601  
T. 510.533.7693  
F. 510.533.0815  
www.arrowsigncompany.com

Project

**Flamingo Resort & Spa**

2777 4th St  
Santa Rosa, CA

Date:

6-2-20

Sales:

☐ Steve Jones

Design:

☐ Andre C.

File Name/Location:

2020/F/Flamingo Resort 2

Rev.	Date	Description
C	8-19-20	Revise overall design
D	9-11-20	Revise quantity, layout
E	9-23-20	Revise copy
F	10-16-20	Revise copy
G	11-13-20	Add color specs
H	1-7-20	Revise arrows
I	3-10-21	Add General Note

**Customer Approval**

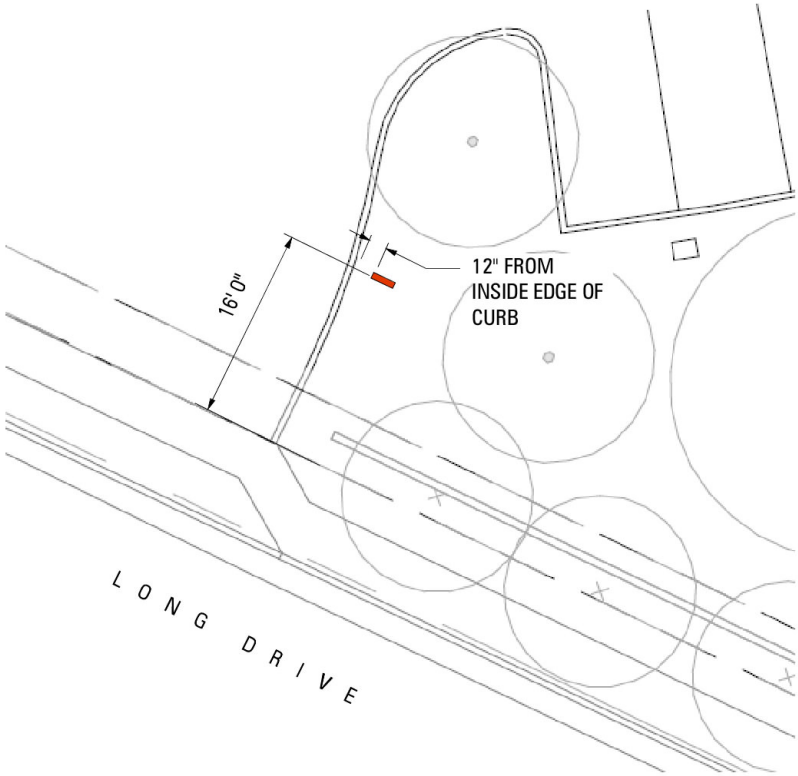
This drawing is a representation of colors and may not accurately depict final color of product. Refer to paint swatch or material samples for color reference.

**ALL RIGHTS RESERVED**  
This is an original unpublished drawing prepared for you by Arrow Sign Co. in a sign program designed for your business. It is not to be shown to anyone outside of your organization nor to be reproduced, copied or exhibited in any fashion.

**00645**



**B.1 SIGN LOCATION** NOT TO SCALE



**B.1 SIGN LOCATION** SCALE: 1/16" = 1' 0"



**B.2 SIGN LOCATION** NOT TO SCALE



1051 46th Avenue  
Oakland, Ca 94601  
T. 510.533.7693  
F. 510.533.0815  
www.arrowsigncompany.com

Project  
**Flamingo Resort & Spa**  
2777 4th St  
Santa Rosa, CA

Date:  
6-2-20

Sales:  
☐ Steve Jones

Design:  
☐ Andre C.

File Name/Location:  
2020/F/Flamingo Resort 2

Rev.	Date	Description
A	10-16-20	Add locations

Customer Approval

This drawing is a representation of colors and may not accurately depict final color of product. Refer to paint swatch or material samples for color reference.  
**ALL RIGHTS RESERVED**  
This is an original unpublished drawing prepared for you by Arrow Sign Co. in a sign program designed for your business. It is not to be shown to anyone outside of your organization nor to be reproduced, copied or exhibited in any fashion.

C

SIGN ELEVATION

NOT TO SCALE

Not Included in Permit Scope

C

SIGN ELEVATION

SCALE: 1-1/2" = 1'-0"

Repaint one (1) tower.

ITEM	DESCRIPTION	VENDOR	SPECIFICATION
"Flamingo" Copy	Repaint	Sherwin Williams	To match Pantone 7417C, semi gloss
Upper Cabinet	Repaint	Sherwin Williams	To match Pantone 7417C, semi gloss
Flamingo	Repaint	Sherwin Williams	To match Pantone 7417C, semi gloss
"HOTEL Copy	Repaint	Sherwin Williams	White semi gloss



1051 46th Avenue  
Oakland, Ca 94601  
T. 510.533.7693  
F. 510.533.0815  
www.arrowsigncompany.com

Project

Flamingo Resort & Spa

2777 4th St  
Santa Rosa, CA

Date:

6-2-20

Sales:

☐ Steve Jones

Design:

☐ Andre C.

File Name/Location:

2020/F/Flamingo Resort 2

Rev.	Date	Description
A	6-25-20	Revise overall design

Customer Approval

This drawing is a representation of colors and may not accurately depict final color of product. Refer to paint swatch or material samples for color reference.

**ALL RIGHTS RESERVED**  
This is an original unpublished drawing prepared for you by Arrow Sign Co. in a sign program designed for your business. It is not to be shown to anyone outside of your organization nor to be reproduced, copied or exhibited in any fashion.



K

PHOTO OF EXISTING SIGN

NOT TO SCALE

Relocate one (1), single-faced non-illuminated post & panel sign.



K

NEW SIGN LOCATION

NOT TO SCALE



1051 46th Avenue  
Oakland, Ca 94601  
T. 510.533.7693  
F. 510.533.0815  
www.arrowsigncompany.com

Project  
**Flamingo Resort & Spa**  
2777 4th St  
Santa Rosa, CA

Date:  
6-2-20

Sales:  
☐ Steve Jones

Design:  
☐ Andre C.

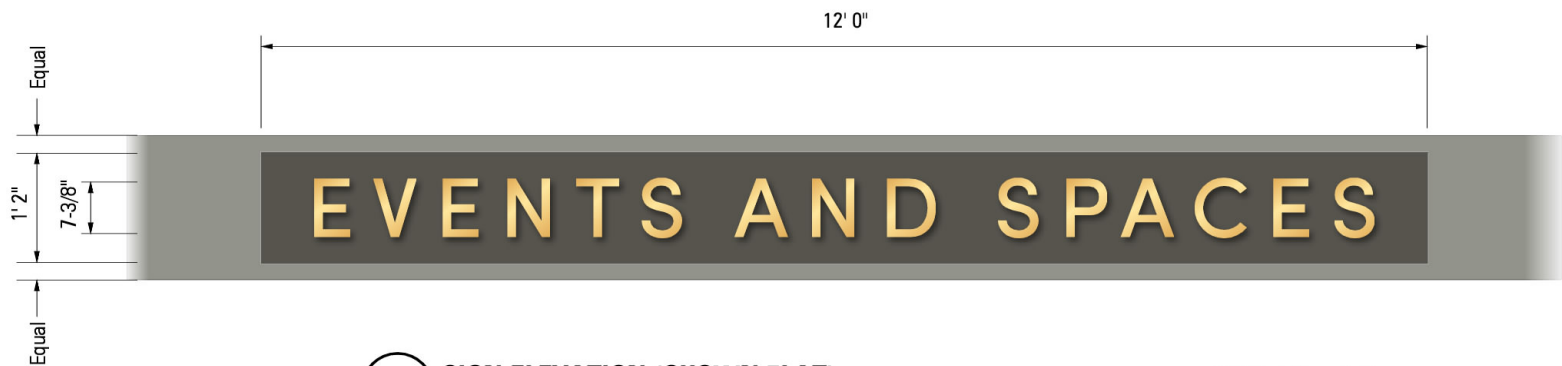
File Name/Location:  
2020/F/Flamingo Resort 2

Rev.	Date	Description
A	6-25-20	Revise overall design
B	8-18-20	Revise font and copy
C	9-11-20	Revise scope of work

Customer Approval

This drawing is a representation of colors and may not accurately depict final color of product. Refer to paint swatch or material samples for color reference.

**ALL RIGHTS RESERVED**  
This is an original unpublished drawing prepared for you by Arrow Sign Co. in a sign program designed for your business. It is not to be shown to anyone outside of your organization nor to be reproduced, copied or exhibited in any fashion.



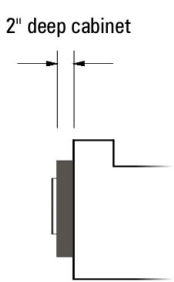
**H SIGN ELEVATION (SHOWN FLAT)** SCALE: 1/2" = 1'-0"

One (1) illuminated sign

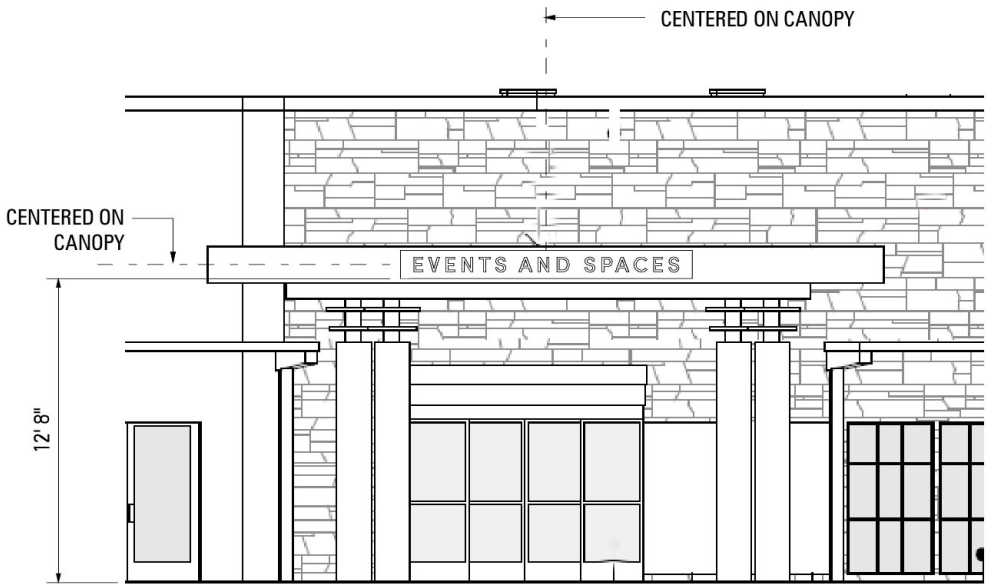
ITEM	DESCRIPTION	VENDOR	SPECIFICATION
Cabinet	Aluminum	Matthews	To match Sherwin Williams "Urbane Bronze" SW7048, satin finish
Copy	3/4" push-thru	Acrylite	Clear
Copy Laminate	Aluminum overlay	Matthews	Inca Gold Metallic MP20503, satin finish
Illumination	LED	Sloan	Prism Mini or equal

**GENERAL NOTES**

1. All work is compliant to 2019 CBC and Part 600 CEC 2019 codes
2. (1) 120v 20amp dedicated circuit required; existing or provided by others
3. Square Footage: 14 sq. ft.



**EXISTING CANOPY**



**CANOPY ELEVATION** SCALE: 1/8" = 1'-0"



**NIGHT ELEVATION**



1051 46th Avenue  
Oakland, Ca 94601  
T. 510.533.7693  
F. 510.533.0815  
www.arrowsigncompany.com

Project  
**Flamingo Resort & Spa**  
2777 4th St  
Santa Rosa, CA

Date:  
6-2-20

Sales:  
☐ Steve Jones

Design:  
☐ Andre C.

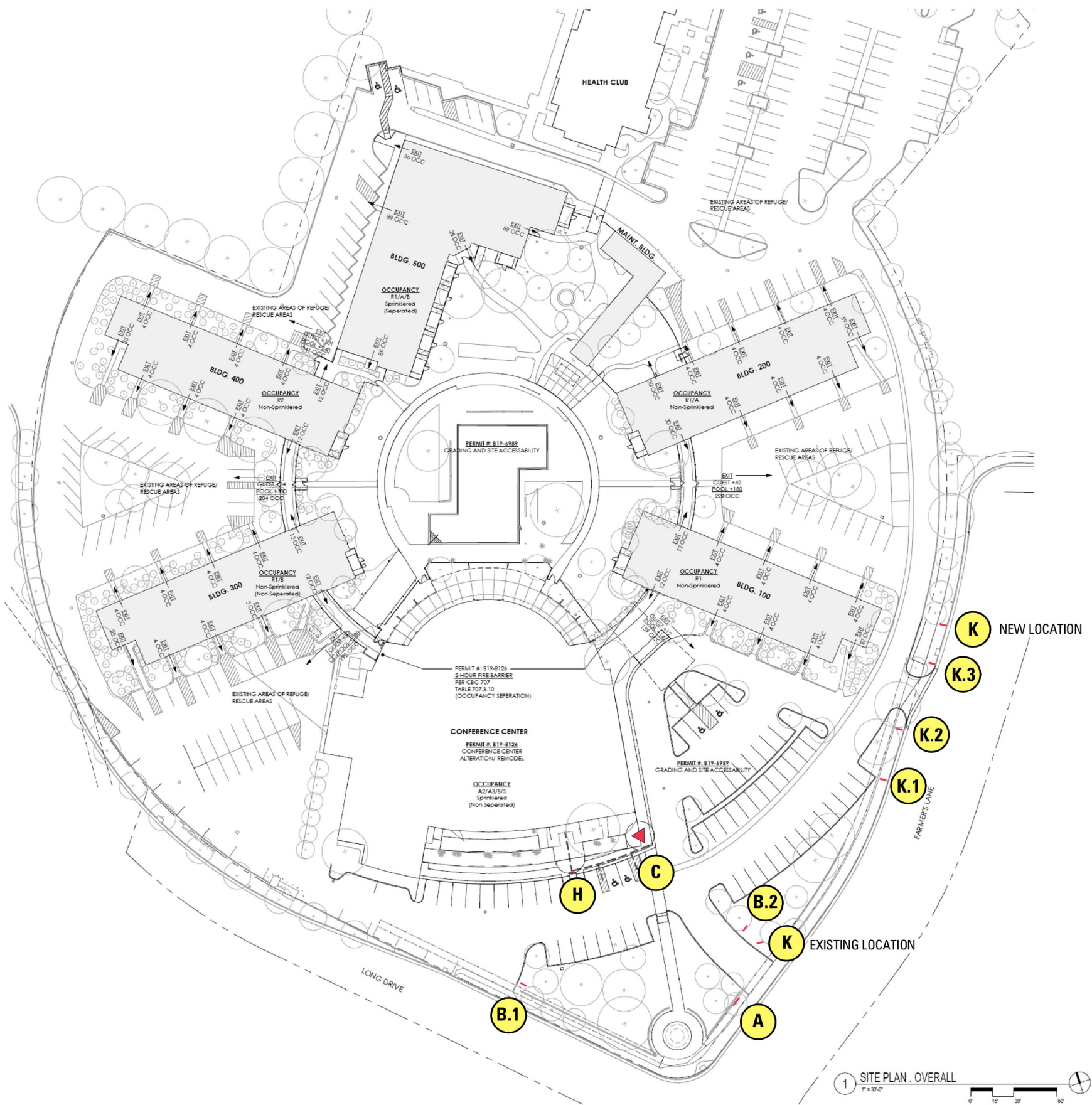
File Name/Location:  
2020/F/Flamingo Resort 2

Rev.	Date	Description
A	9-18-20	Change to push thru option
B	10-19-20	Add color, location
C	11-4-20	Revise copy and cabinet size
D	1-27-21	Revise canopy color
E	3-10-21	Add General Note

Customer Approval

This drawing is a representation of colors and may not accurately depict final color of product. Refer to paint swatch or material samples for color reference.

**ALL RIGHTS RESERVED**  
This is an original unpublished drawing prepared for you by Arrow Sign Co. in a sign program designed for your business. It is not to be shown to anyone outside of your organization nor to be reproduced, copied or exhibited in any fashion.



SITE PLAN

NOT TO SCALE

SIGN	SQUARE FOOTAGE
A	30
B.1	10
B.2	10
C	540
H	14
K	14
K.1	14
K.2	14
K.3	14
TOTAL	660



1051 46th Avenue  
Oakland, Ca 94601  
T. 510.533.7693  
F. 510.533.0815  
www.arrowsigncompany.com

Project  
**Flamingo Resort & Spa**  
2777 4th St  
Santa Rosa, CA

Date:  
6-2-20

Sales:  
☐ Steve Jones

Design:  
☐ Andre C.

File Name/Location:  
2020/F/Flamingo Resort 2

Rev.	Date	Description
A	3-11-21	Revise square footage

Customer Approval

This drawing is a representation of colors and may not accurately depict final color of product. Refer to paint swatch or material samples for color reference.

**ALL RIGHTS RESERVED**  
This is an original unpublished drawing prepared for you by Arrow Sign Co. in a sign program designed for your business. It is not to be shown to anyone outside of your organization nor to be reproduced, copied or exhibited in any fashion.