

# FLAMINGO RESORT AND SPA

## Sign Variance

2777 4<sup>TH</sup> ST

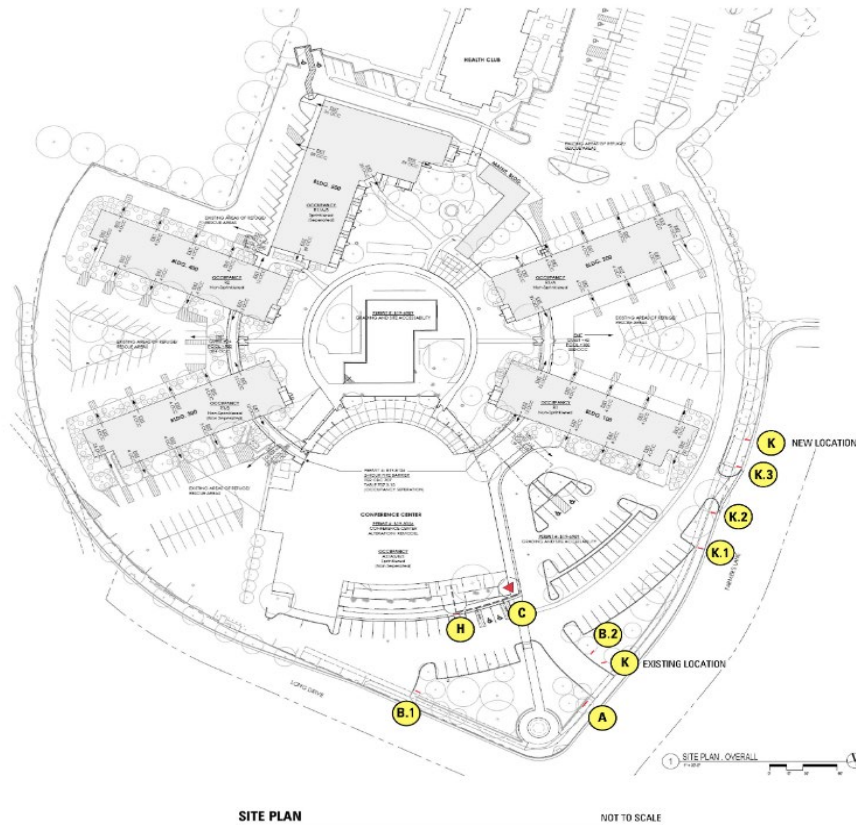
---

May 20, 2021

John Jay, Contract Planner  
Planning and Economic Development

A proposal to install 632 SF of signage at the Flamingo Resort and Spa where 100 SF is allowed per Zoning Code chapter 20-38.





Site Plan with sign locations



**A SIGN ELEVATION**

SCALE: 1/2" = 1'-0"

One (1) single-faced, illuminated sign mounted to existing wall

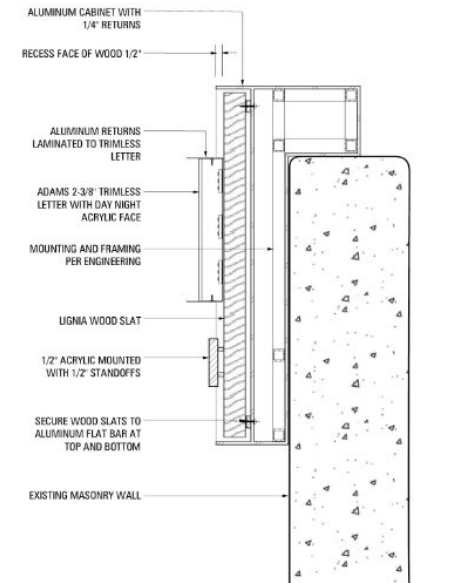
ITEM	DESCRIPTION	VENDOR	SPECIFICATION
Cabinet	Aluminum	Matthews	To match Sherwin Williams "Urbane Bronze" SW7048, satin finish
Background	Wood Slat	Ligna	22mm x 50mm, spaced at 10 slats per lineal foot (approx. 1-3/16" O.C. natural finish with clear sealer (wood provided by customer)
Flamingo (inner returns)	Prefinished aluminum	Adams	Trimless, 2-3/8"
Flamingo (outer returns)	Aluminum	Matthews	Inca Gold Metallic MP20503, satin finish
Flamingo Faces	Acrylic	Acrylite	Day/Night acrylic #9X004
Flamingo Illumination	LED	Sloan	Prism Mini 3000K or equal
Lower Copy	1/2" acrylic, 1/2" standoff	Matthews	Inca Gold Metallic MP20503, satin finish

**GENERAL NOTES**

1. All work is compliant to 2019 CBC and Part 600 CEC 2019 codes
2. (1) 120v 20amp dedicated circuit required; existing or provided by others
3. Square Footage: 30 sq. ft.



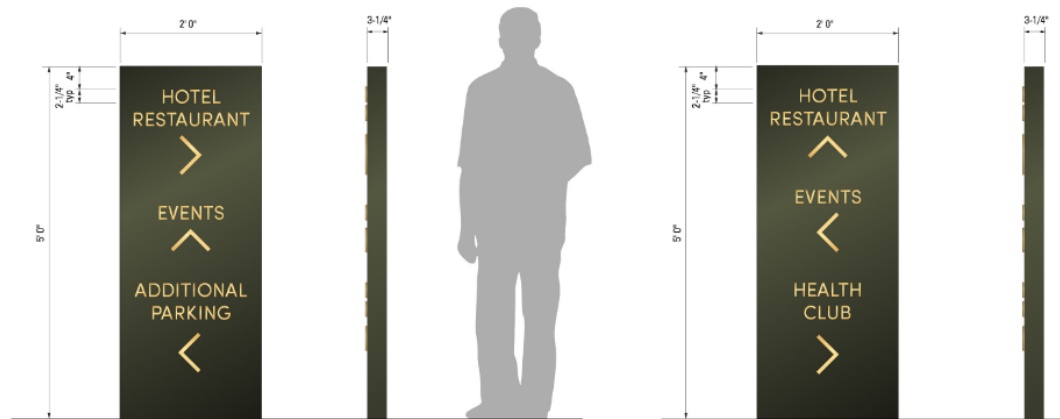
NIGHT ELEVATION



**A SIGN SECTION**

SCALE: 1-1/2" = 1'-0"

Entry Wall (A)



**B.1 SIGN ELEVATION**

SCALE: 3/4" = 1'-0"

Manufacture and install one (1), single-faced, non-illuminated freestanding sign as shown.

ITEM	DESCRIPTION	VENDOR	SPECIFICATION
Cabinet	Aluminum	Matthews	To match Sherwin Williams "Urbane Bronze" SW7048, satin finish
Copy and Graphics	1/4" aluminum	Matthews	Inca Gold Metallic MP20503, satin finish
Note	Sign to have Matthews satin clearcoat		

**GENERAL NOTES**

1. All work is compliant to 2019 CBC codes
2. Square Footage: 10 sq. ft.

**B.2 SIGN ELEVATION**

SCALE: 3/4" = 1'-0"

Manufacture and install one (1), single-faced, non-illuminated freestanding sign as shown.

ITEM	DESCRIPTION	VENDOR	SPECIFICATION
Cabinet	Aluminum	Matthews	To match Sherwin Williams "Urbane Bronze" SW7048, satin finish
Copy and Graphics	1/4" aluminum	Matthews	Inca Gold Metallic MP20503, satin finish
Note	Sign to have Matthews satin clearcoat		

**GENERAL NOTES**

1. All work is compliant to 2019 CBC codes
2. Square Footage: 10 sq. ft.

New Directional signs  
(B.1, B.2)





**K** EXISTING SIGN (TO BE RELOCATED) NOT TO SCALE  
7 square feet



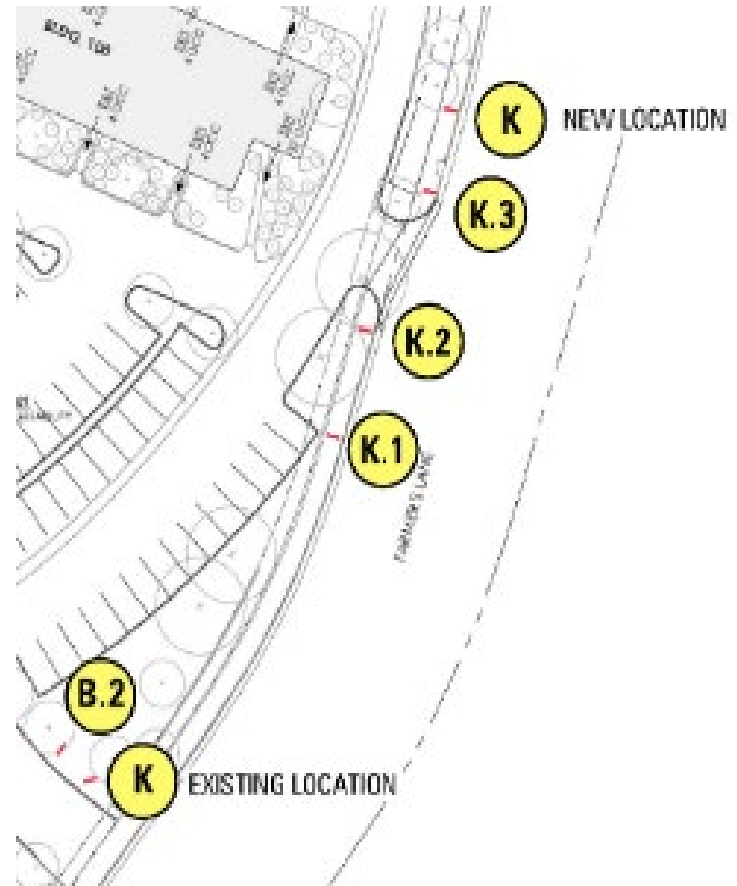
**K.2** EXISTING SIGN NOT TO SCALE  
7 square feet



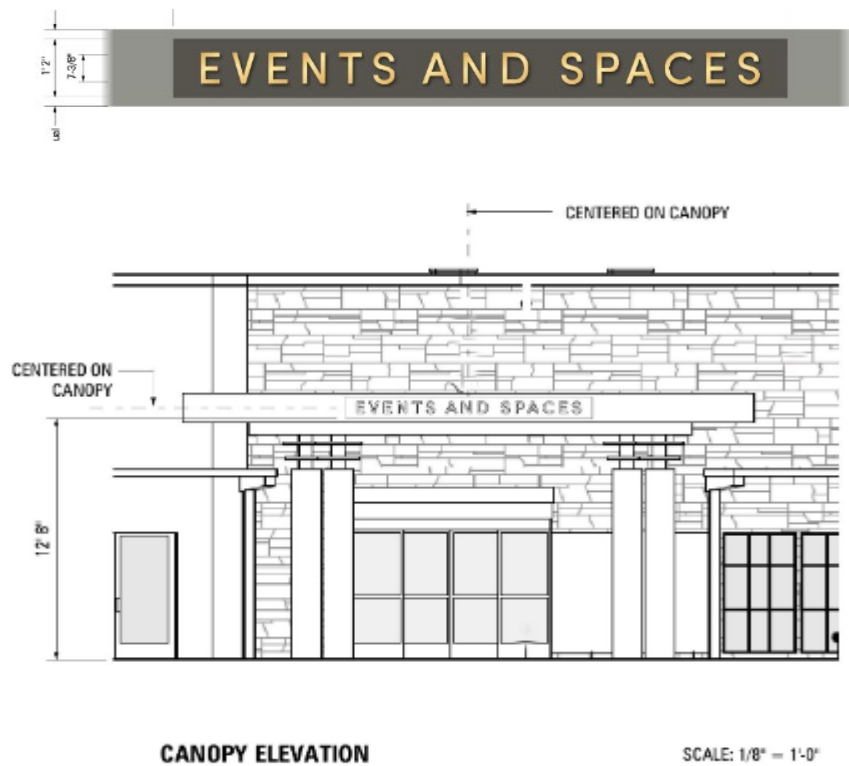
**K.1** EXISTING SIGN NOT TO SCALE  
7 square feet



**K.3** EXISTING SIGN NOT TO SCALE  
7 square feet



Existing signs and new location  
(K, K1, K2, K3)



2' deep cabinet



EXISTING CANOPY

## New Wall Sign (H)





Existing historic tower sign  
(C)

Sign	Sign Type	Proposed SF
A	Freestanding	30
B.1	Directional	10
B.2	Directional	10
C	Tower	540
H	Wall	14
K	Directional	7
K.1	Directional	7
K.2	Directional	7
K.3	Directional	7
Total: 9		Total: 632

Total of 100 square feet is allowable signage on entire site  
per Chapter 20-38 of the SR Zoning Code

## Recommendation

The Planning and Economic Development Department recommends that the Zoning Administrator, by resolution, approve a Sign Variance for the Flamingo Resort and Spa located at 2227 4<sup>th</sup> Street.



John Jay, Contract Planner  
Planning and Economic Development  
JJay@srcity.org  
(707) 757-6656

