

The background of the slide is a dark, textured surface resembling wood grain. Scattered across this background are numerous water droplets of various sizes. Some droplets are large and clear, showing highlights and reflections, while others are smaller and more numerous. They are primarily located in the top-left and bottom-right corners, with a few smaller ones in the center and top-right areas.

WATER SMART PORTAL

BOARD OF PUBLIC UTILITIES
JUNE 17, 2021

KIMBERLY ZUNINO
DEPUTY DIRECTOR ADMINISTRATION

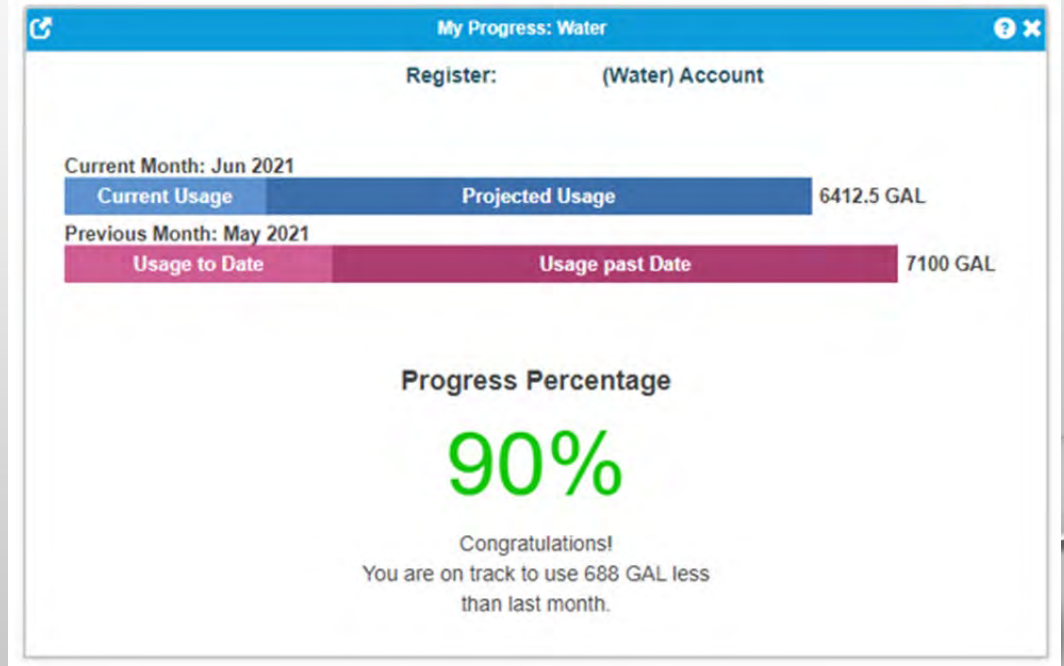
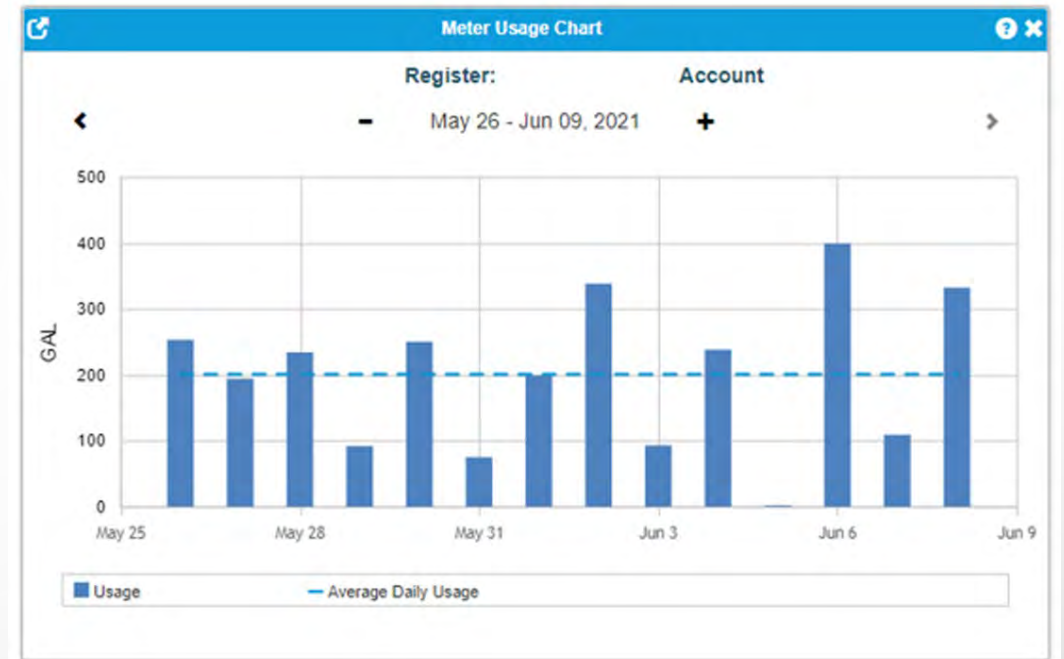
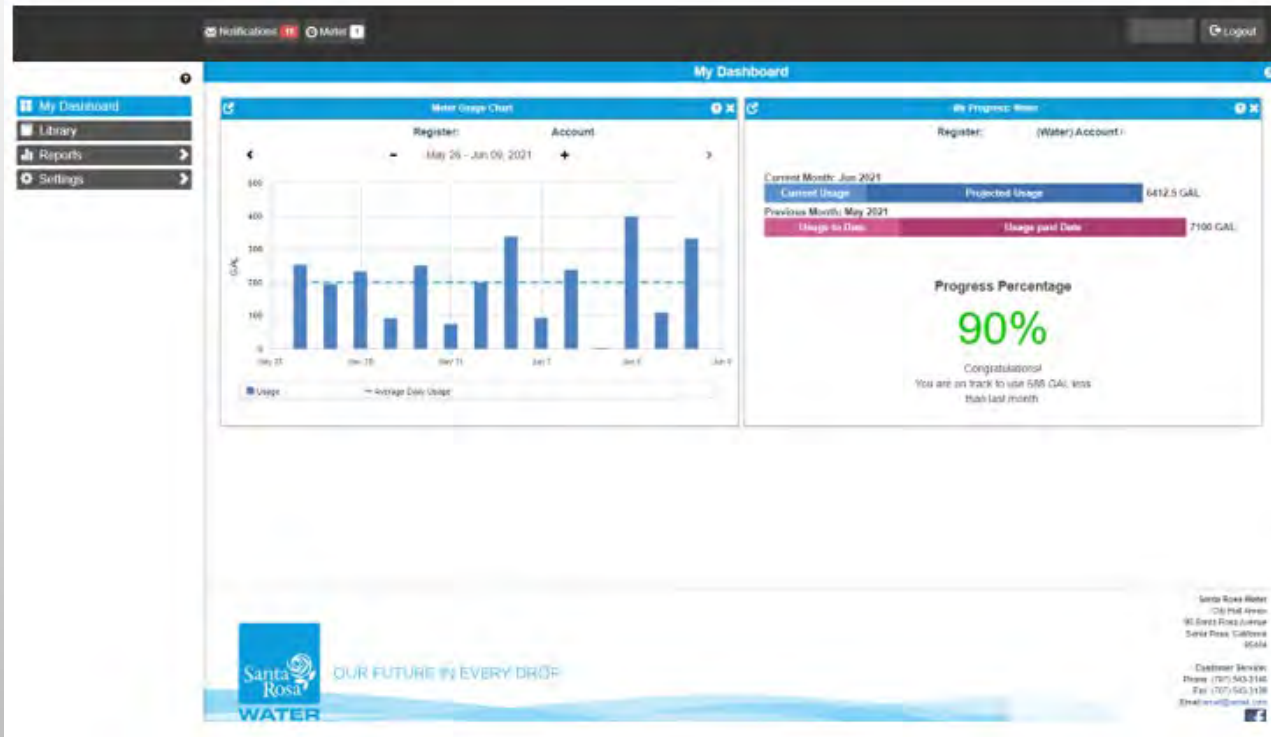
THE PORTAL

Access to Hourly
Water Use Data

Customized
Notifications

Program and
Rebate
Information

THE DASHBOARD

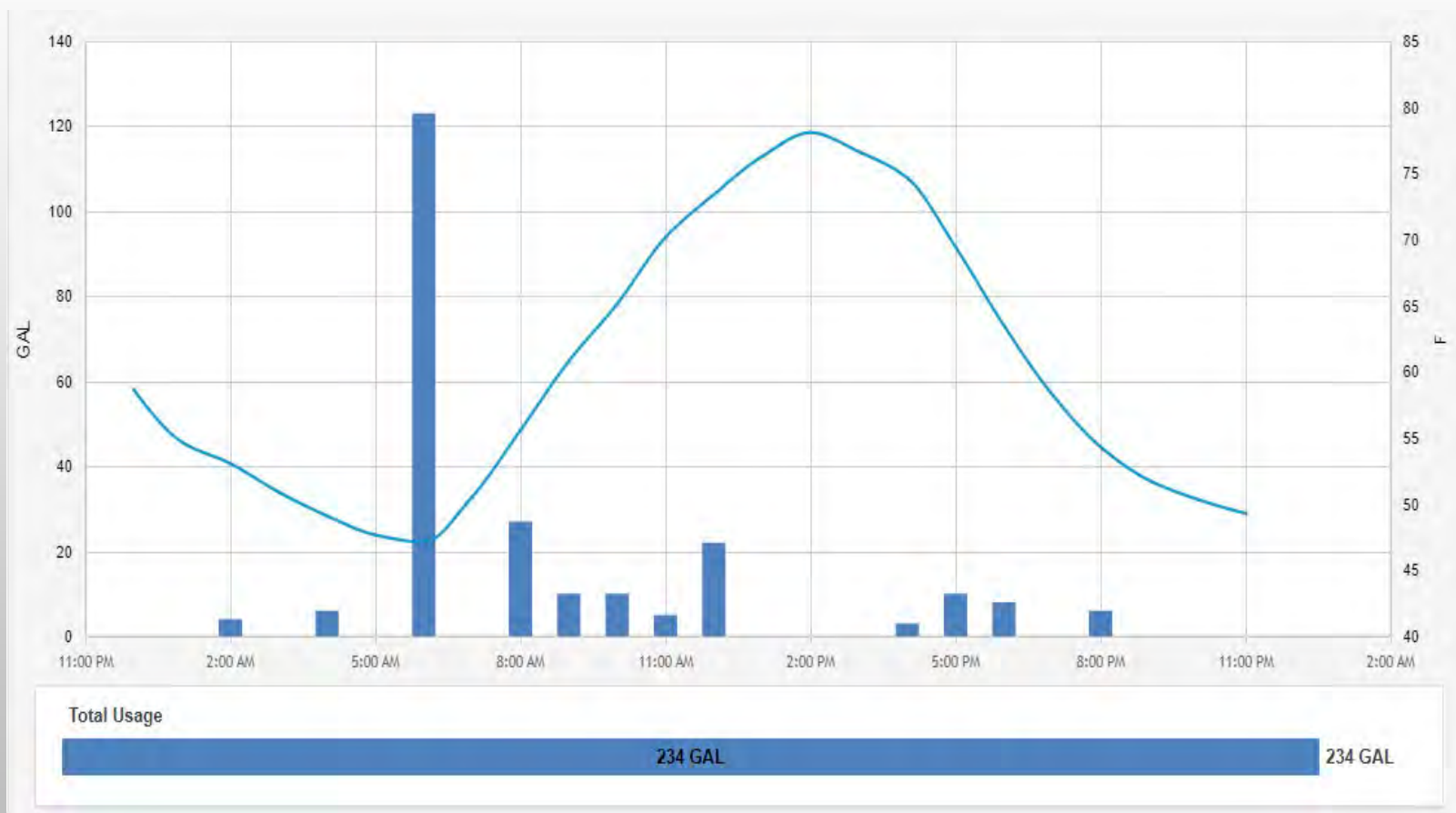




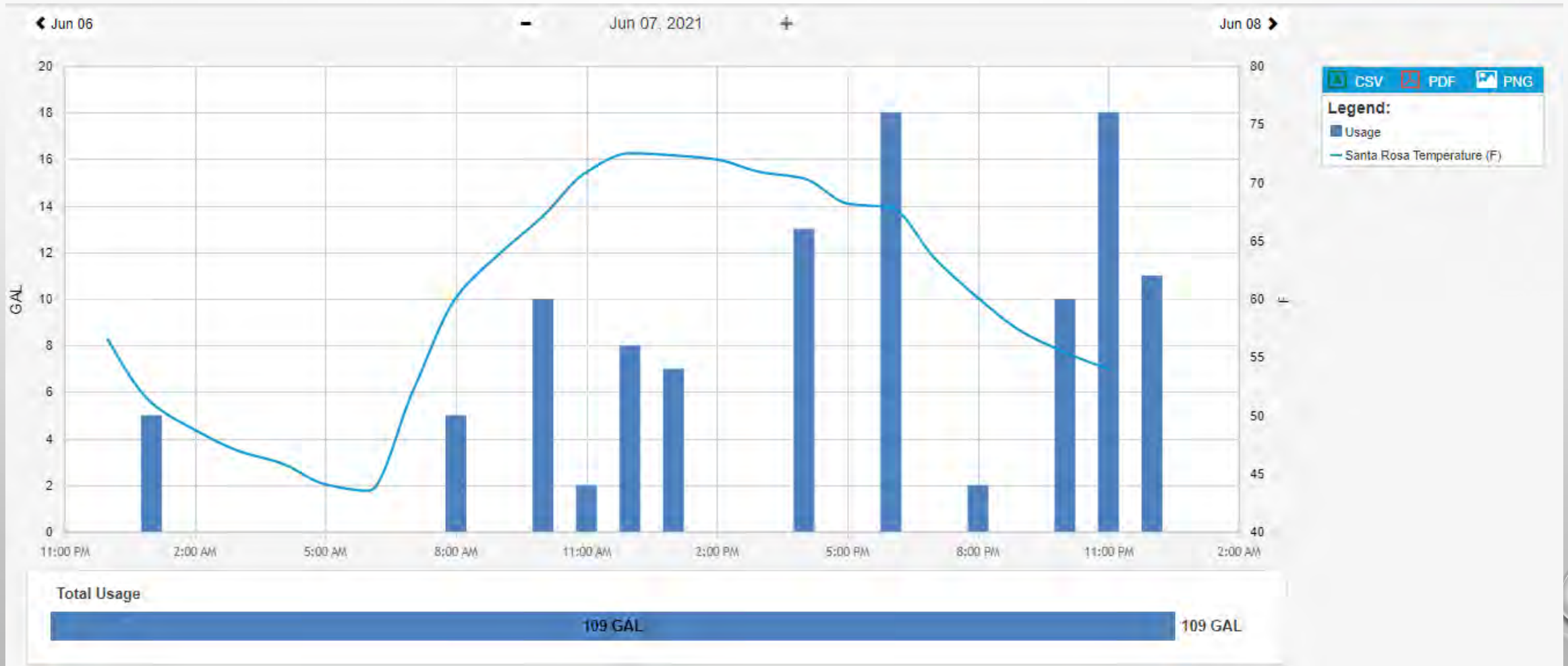
KNOW WHAT YOU USE

KNOW HOW YOU USE IT

KNOW WHEN YOU USE IT



HOURLY WATER USE DATA



GETTING THE WORD OUT

Library

Featured Articles



It's A Dry Year. Save Water With Us.

As our water future remains uncertain, due to historically dry weather conditions, we can all work together to preserve our precious water supply by embracing daily WaterSmart habits. the same period is 23.93 inches. bit.ly/3o88rY

Show Details



All Articles



It's A Dry Year. Save Water With Us.

As our water future remains uncertain, due to historically dry weather conditions, we can all work together to preserve our precious water supply by

Category: Home, Community, Conservation



Exporting My Data

All the available reports contain information that can be useful for personal analysis on a program like Microsoft Excel. The ability to export the data in various formats can facilitate this

Category: Help



Set Up Web Notifications

Notifications are one of the ways we can manage our consumption and budgets. This tutorial will go over some of the details and tips on setting up a web-based notification.

Category: Help



WaterSmart Rebates

Receive a WaterSmart rebate for replacing your older clothes washer with a new high-efficiency model.

Category: Home, Community, Conservation

OUTREACH



NEW water smart PORTAL

A new drought-busting tool customized just for you!

Do you know how much water you use, when you use it, and the best ways for you to save? Santa Rosa Water's brand NEW WaterSmart Portal is here to help you track and analyze your water use online. To register your account, all you need is your customer number, account number, and last billed amount from your Water Bill.

- Track Hourly, Daily, Weekly, and Monthly Water Use
- Create Customized Notifications for High Usage
- Access Water Saving Tips, Tools, and Rebates

Sign up today!
srcity.org/WaterSmartPortal

Santa Rosa WATER



NUEVO water smart PORTAL

Una nueva herramienta para combatir la sequía

¿Sabe cuánta agua utiliza, cuándo la utiliza y cuáles son las mejores formas de ahorrar?

El NUEVO Portal WaterSmart de Santa Rosa Water está aquí para ayudarle a seguir y analizar su consumo de agua en línea. Para registrar su cuenta, todo lo que necesita es su número de cuenta y el último volumen facturado de su factura de agua.


- Rastree el uso de agua por hora, por día, por semana y por mes
- Genere notificaciones personalizadas en caso de alto consumo
- Acceda a consejos, herramientas y descuentos para ahorrar agua

Inscríbase hoy mismo
srcity.org/WaterSmartPortal

Santa Rosa WATER




OTHER TOOLS

- CREATE CUSTOMIZED THRESHOLD NOTIFICATIONS
 - CUSTOMIZE YOUR DASHBOARD
 - COMBINE ALL METERS WITH ONE LOG IN
 - MAKE NOTES ON YOUR WATER USE CHARTS
 - LINK DIRECTLY TO OTHER SITES
- 



WHAT DO THE CUSTOMERS THINK?

- LARGE COMMERCIAL CUSTOMERS
 - ABLE TO TRACK ALL METER USE IN ONE LOCATION
 - TAGGING SPECIFIC TIME PERIODS TO FOLLOW UP ON ACTIVITY
 - RESIDENTIAL CUSTOMERS
 - RECEIVING EMAILS AND CALLS
 - 33 CUSTOMERS SIGNED UP WITHIN DAYS OF SOFT LAUNCH
- 

QUESTIONS / COMMENT