



City of Santa Rosa, CA

Wireless Connectivity

100 Santa Rosa Avenue
Santa Rosa, CA 95404

The pathway to possible.

Why are we here?

- *Seeking approval of a Conditional Use Permit for a wireless communication facility.*
 - *The current structure is located at 135 Ridgway Ave., Santa Rosa, California 95401.*
 - *Crown Castle is proposing to relocate the structure to 1236 Cleveland Ave., Santa Rosa, CA 95401 in order to maintain coverage to the surrounding area.*
- *Facilitate the provision of wireless telecommunication services to the residents and businesses of the City.*
- *Minimize adverse visual effects of communications towers and antennas through careful design and siting standards.*
- *Maximize the use of an approved tower to accommodate new wireless telecommunication antennas in order to reduce the number of towers needed to serve the community.*

Why is this site important?

96%

of Americans own a
cellphone¹

57%

of Americans homes
rely exclusively on
cellular phones²

80%

Or more of 9-1-1
emergency calls are
made from wireless
devices³

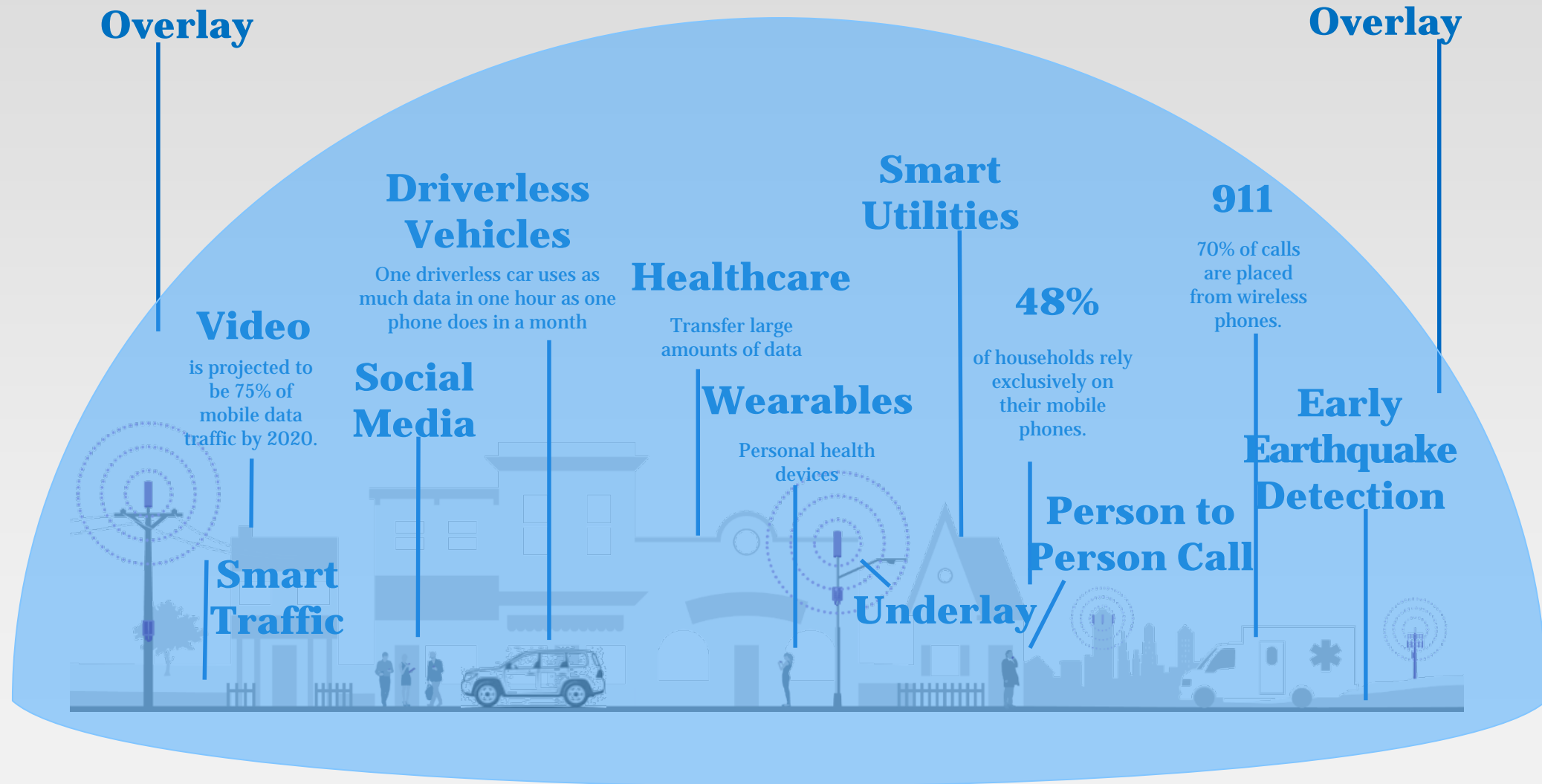
1.Source: “Mobile Fact Sheet”, Pew Research Center, 06/12/2019

2. Source: “Wireless Substitution: Early Release of Estimates From the
National Health Interview Survey, July–December 2018” National Center for Health Statistics, 2018

3. Source: “9-1-1 Statistics”, National Emergency Number Association, 07/2018

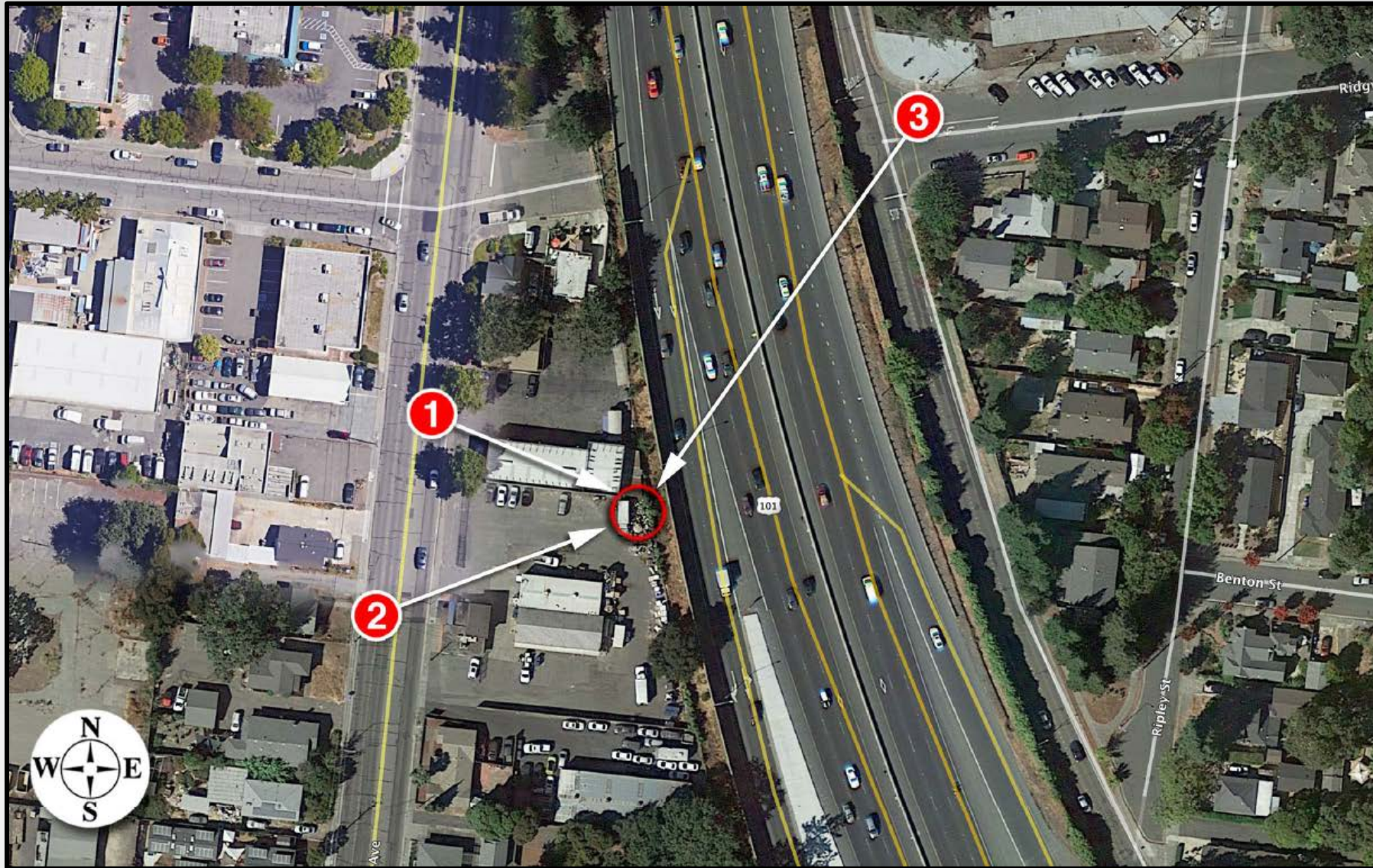
Heterogeneous Network

“HetNet”



Simulated Views

Overview Map



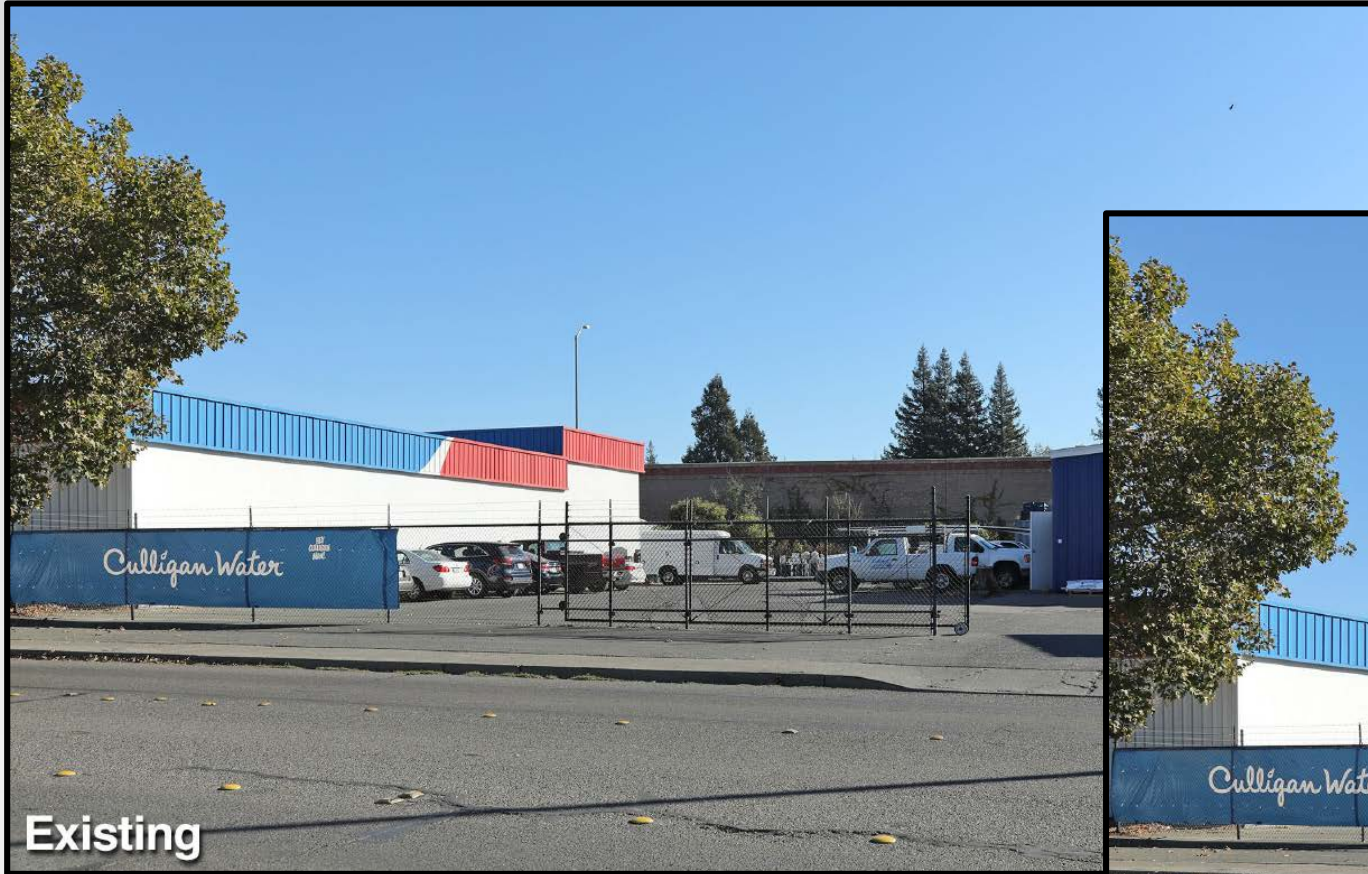
Simulated Views

Perspective 1



Simulated Views

Perspective 2



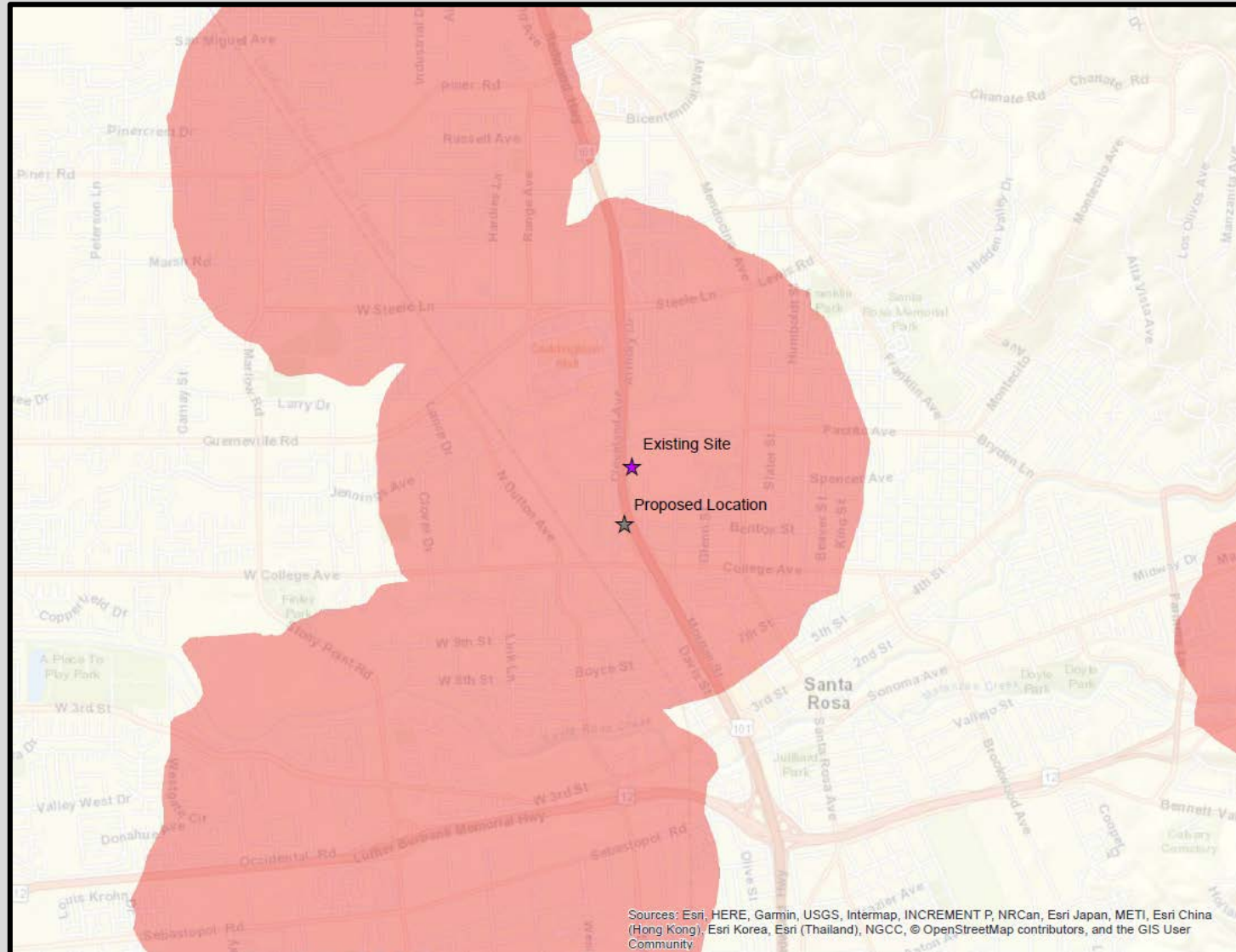
Simulated Views

Perspective 3



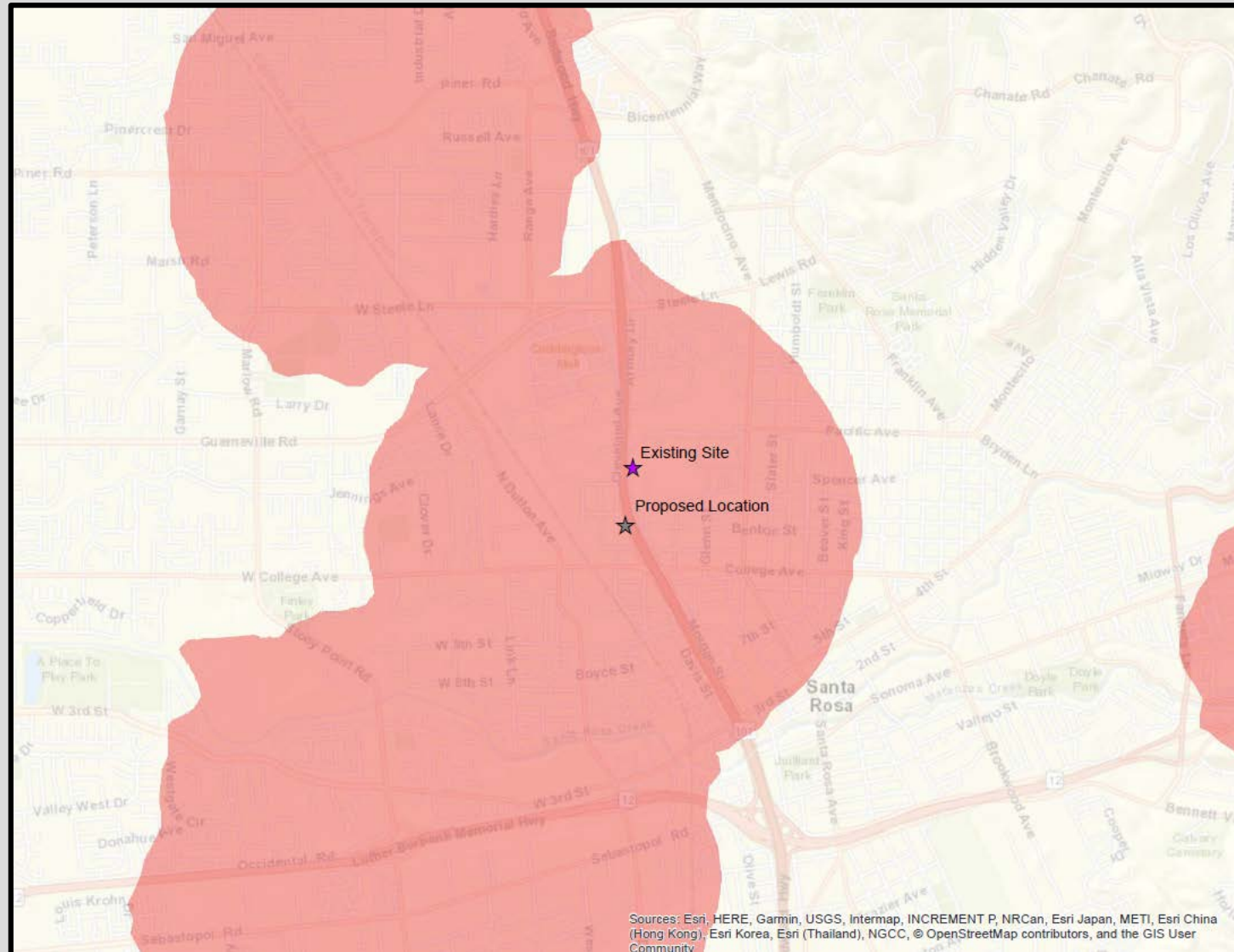
Propagation Maps

Existing Coverage



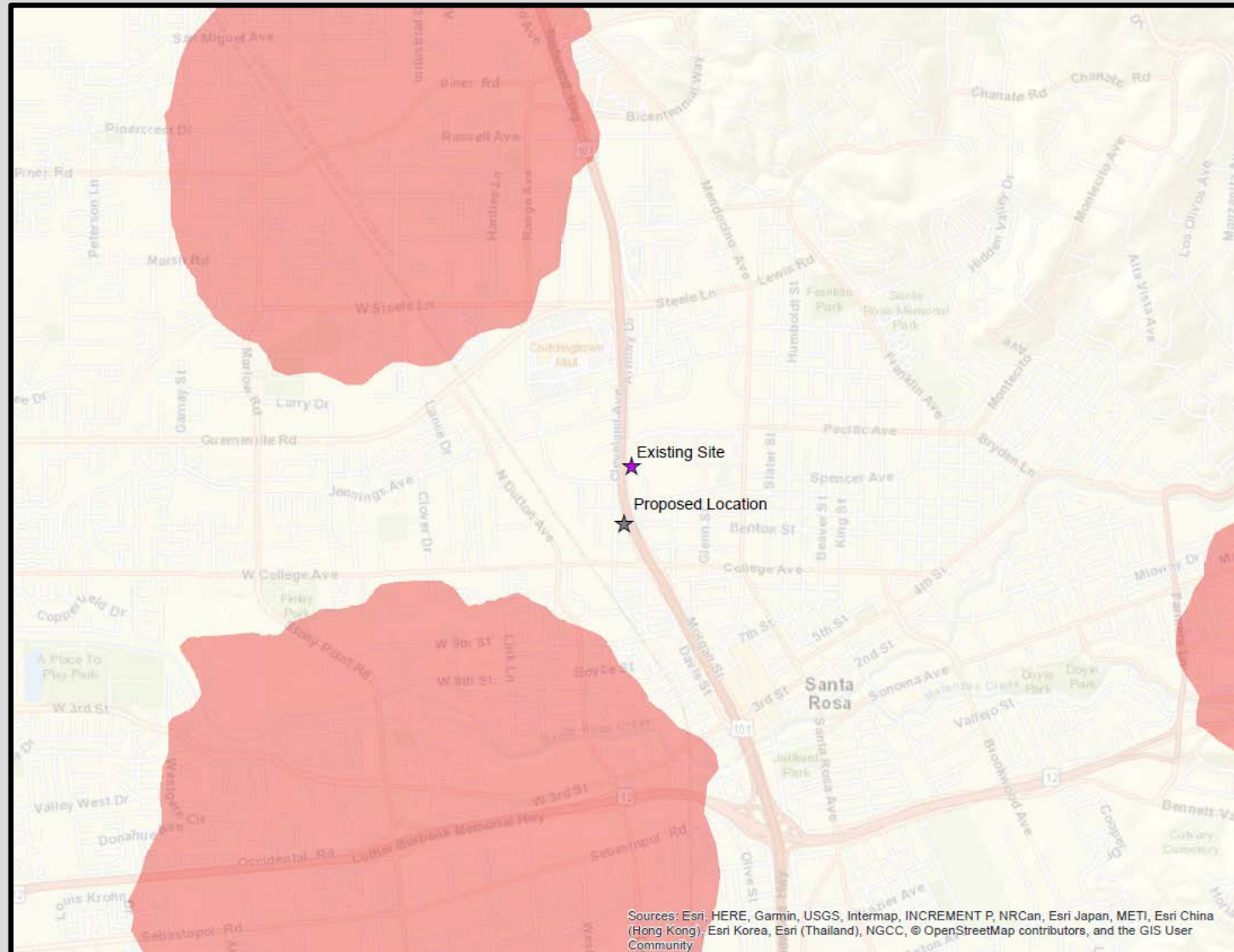
Propagation Maps

Proposed Coverage



Propagation Maps

Loss of Coverage



Why Crown Castle?



State & Federal Compliance

- EPA, FAA & FCC
- In-house legal team dedicated to compliance issues



Safety

- Yearly ground-based inspections
- Structural inspection every three years (national standard)
- Incident Response & Disaster Recovery Program



Network Operations Center

- Open 24/7
- Monitors critical systems
- Responds to network outages
- Calls answered by live representatives

Thank you



For further information please contact:

Jacob Sparks

Jacob.Sparks@crowncastle.com

941-309-4617

Tim Page

Tim.Page@crowncastle.com

916-622-6323