



JOB LOCATION FOR 729 WHEELER
NEIGHBORHOOD AERIAL MAP



GARAGE

725

729

735

729

Wheeler St

Wheeler St



EXISTING GARAGE
AFTER DAMAGE
PRIOR TO DEMOLITION

729 WHEELER ST.



EXISTING GARAGE
SHOWING DAMAGE
PRIOR TO DEMOLITION
- SOUTH ELEVATION

729 WHEELER ST

COUNTY ASSESSOR'S PARCEL MAP

TAX RATE AREA
4-001

9-25

Part of TUPPER ADDITION

TUPPER

MAP BK 1, PG. 7, REC. 9-29-1873

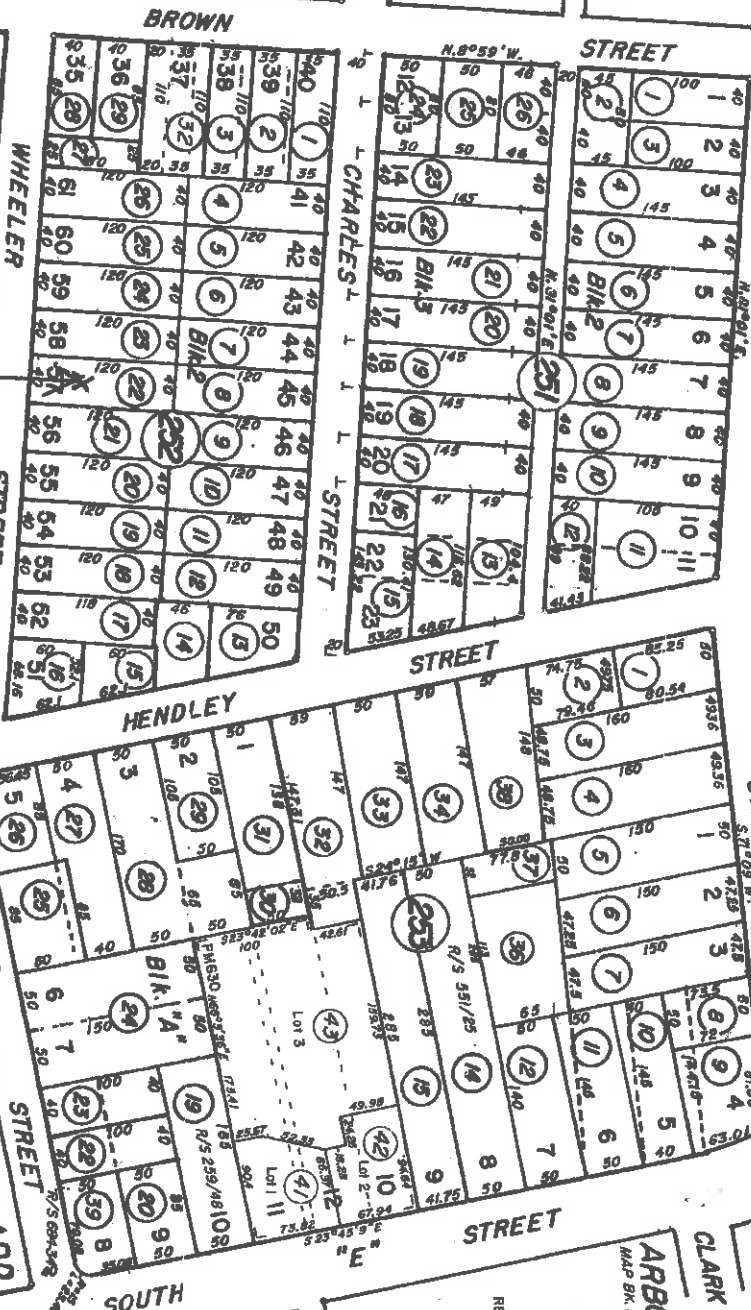
STREET

CLARK ST.

ARBORETA ADD.
MAP BK 16, PG. 7, REC. 2-23-1904

PM 630
REC. 6-24-03, MAP 649, PAGE 48

REVISOR
8-9-77-
12-10-80-40 BF
11-2-83-01-32(252)
11-1-84-08-R/S
11-10-8-03-43
11-5-18-06-R/S



Part of WHEELER ADDITION

WHEELER

Part of BRANSFORD ADD.

WHEELER

NOTE: Assessor's parcels do not necessarily constitute legal lots. To verify legal parcel status, check with the appropriate city or county community development or planning division.

NOTE: THIS MAP WAS PREPARED FOR ASSESSMENT PURPOSES ONLY. NO LIABILITY IS ASSURED FOR THE ACCURACY OF THE DATA DELINEATED HEREON.

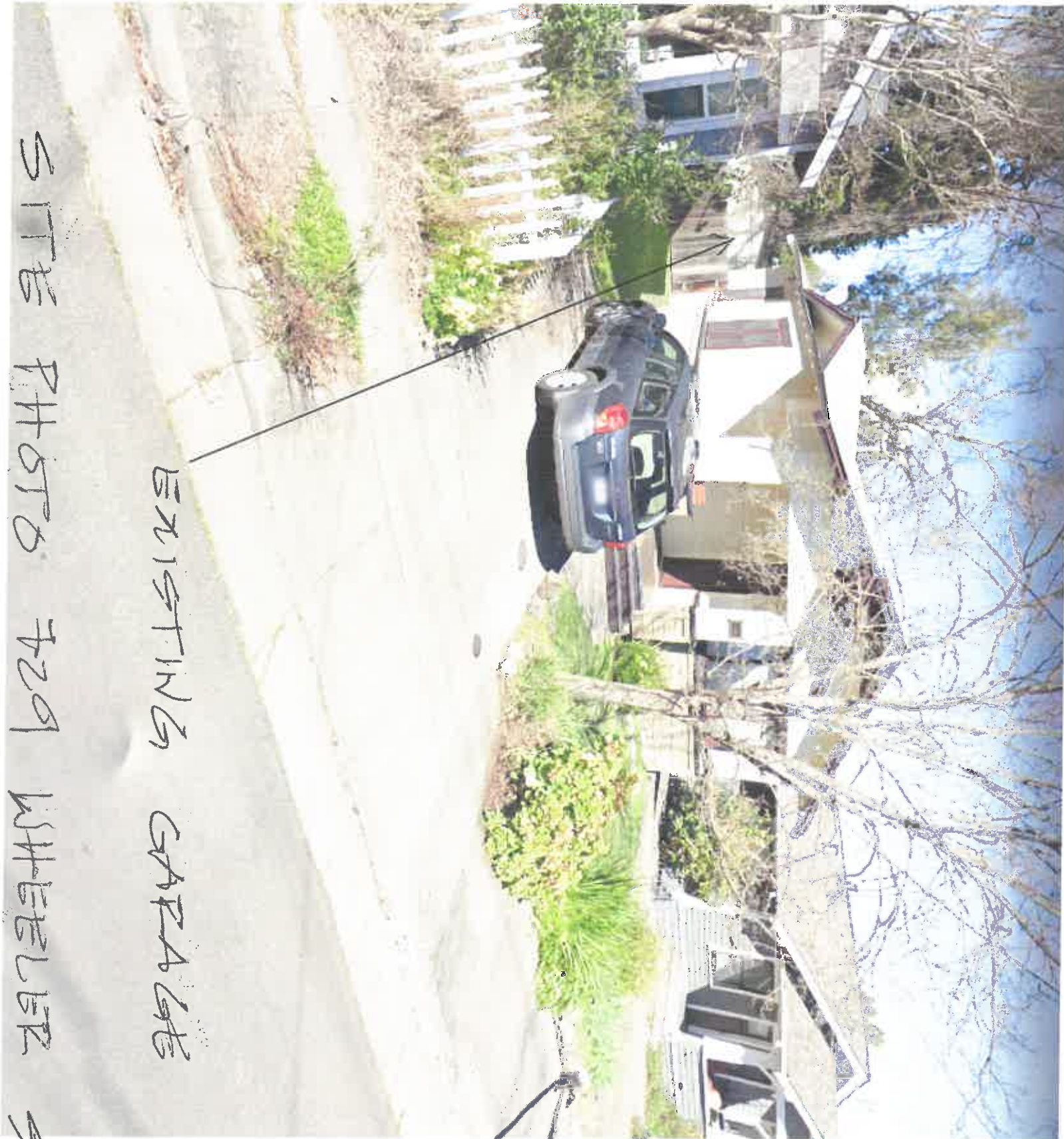
Assessor's Map Bk 9 Pg 25
Sonoma County Coll.

WHEELER ST

729

EXISTING GARAGE

SITE PHOTO FOR WHEELER ST





1st Location

MAIN HOUSE

NEIGHBORHOOD LOOKING NORTH

729 WHEELER ST



MAIN HOUSE

NELIGHBORHOOD LOOKING EAST

729 WHEELER ST.



NEIGHBORHOOD VIEW
LOOKING WEST

1ST
LOCATION

MAIN HOUSE