



# City of Santa Rosa, CA

## Wireless Connectivity

100 Santa Rosa Avenue  
Santa Rosa, CA 95404

The pathway to possible.

# Why are we here?

- *Seeking approval of a Conditional Use Permit for a wireless communication facility.*
  - *The current structure is located at 135 Ridgway Ave., Santa Rosa, California 95401.*
  - *Crown Castle is proposing to relocate the structure to 1236 Cleveland Ave., Santa Rosa, CA 95401 in order to maintain coverage to the surrounding area.*
- *Facilitate the provision of wireless telecommunication services to the residents and businesses of the City.*
- *Minimize adverse visual effects of communications towers and antennas through careful design and siting standards.*
- *Maximize the use of an approved tower to accommodate new wireless telecommunication antennas in order to reduce the number of towers needed to serve the community.*

# Why is this site important?

96%

of Americans own a  
cellphone<sup>1</sup>

57%

of Americans homes  
rely exclusively on  
cellular phones<sup>2</sup>

80%

Or more of 9-1-1  
emergency calls are  
made from wireless  
devices<sup>3</sup>

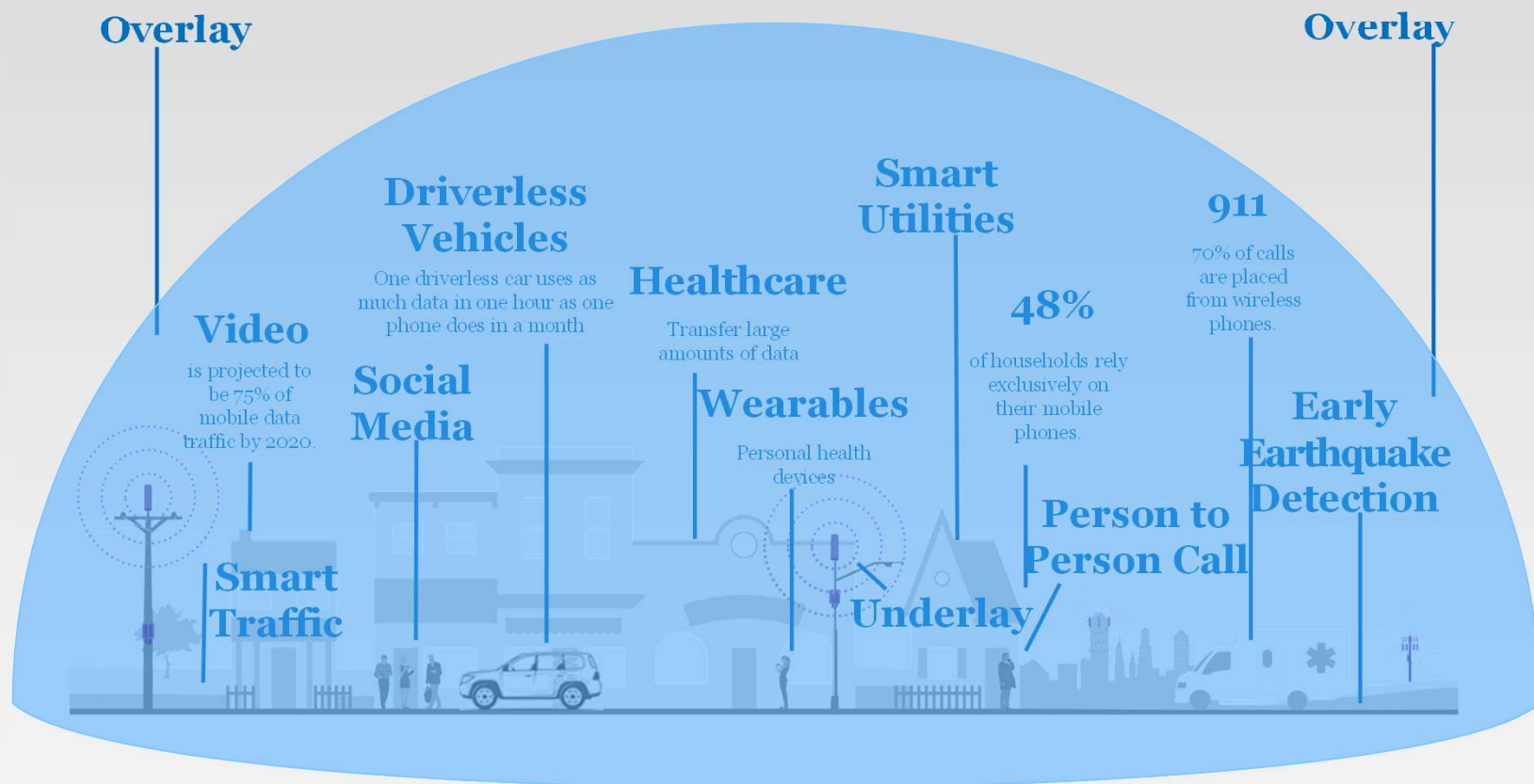
1. Source: “Mobile Fact Sheet”, Pew Research Center, 06/12/2019

2. Source: “Wireless Substitution: Early Release of Estimates From the National Health Interview Survey, July–December 2018” National Center for Health Statistics, 2018

3. Source: “9-1-1 Statistics”, National Emergency Number Association, 07/2018

# Heterogeneous Network

## “HetNet”





# Simulated Views

## Overview Map





# Simulated Views

## Perspective 1



# Simulated Views

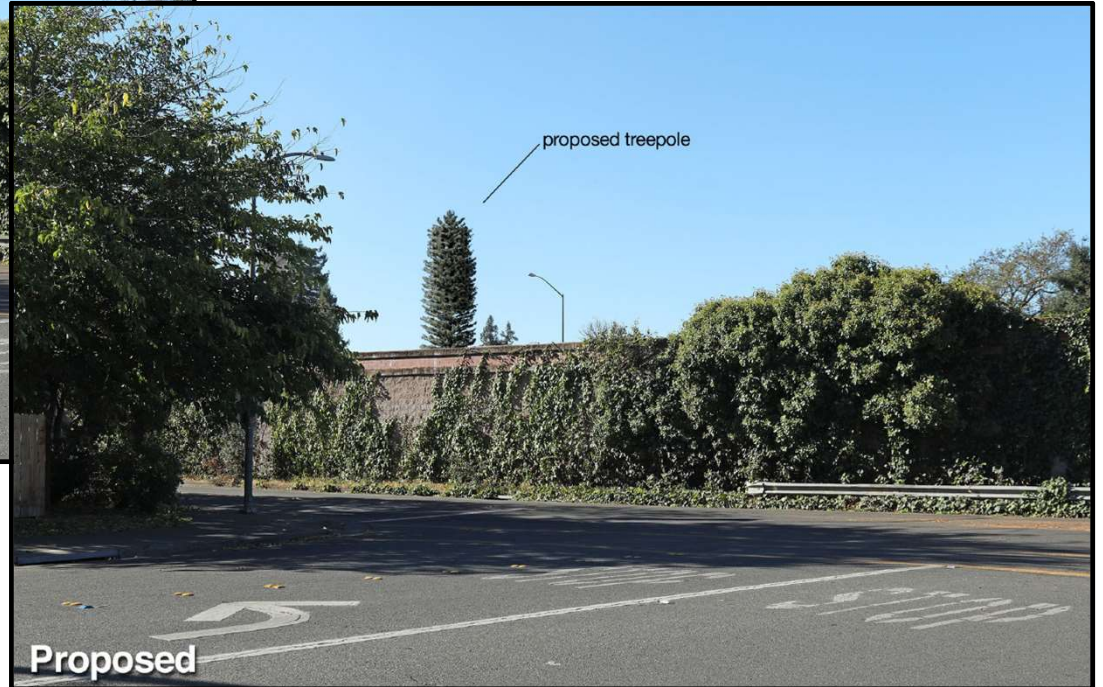
## Perspective 2





# Simulated Views

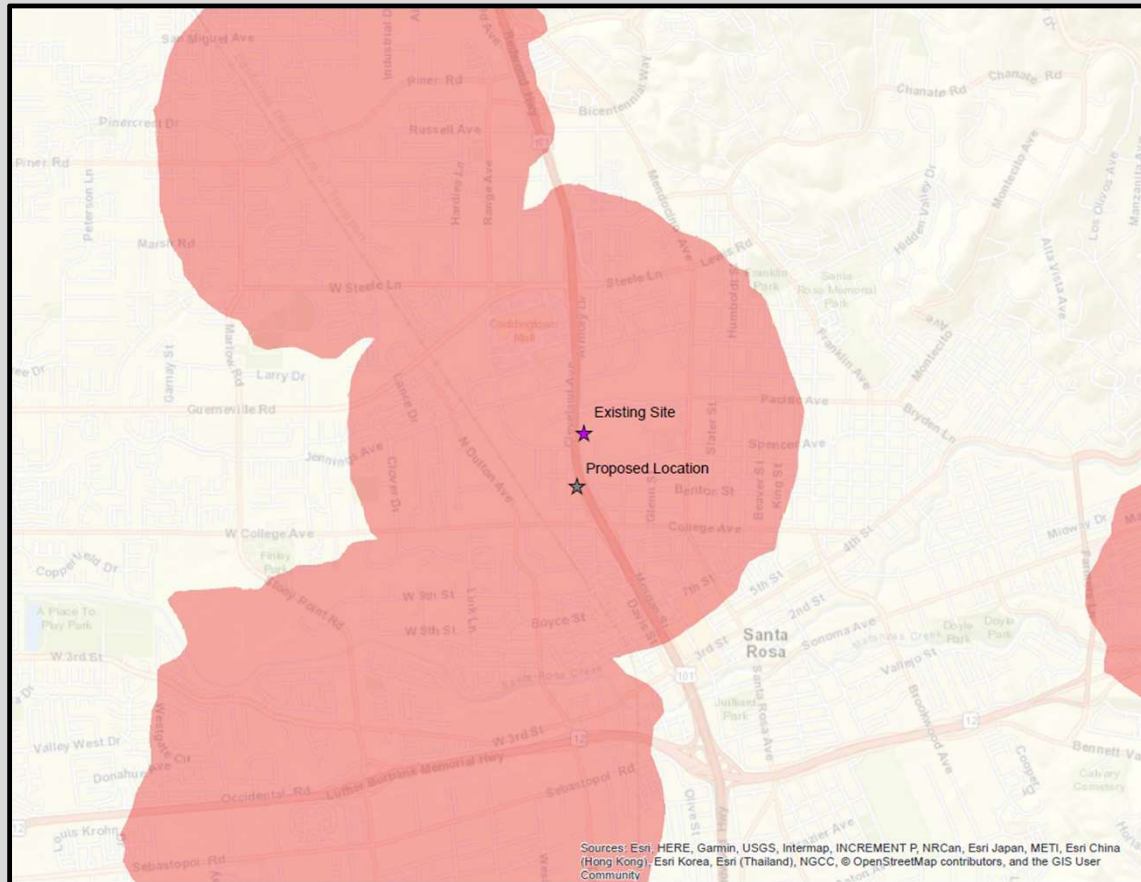
## Perspective 3





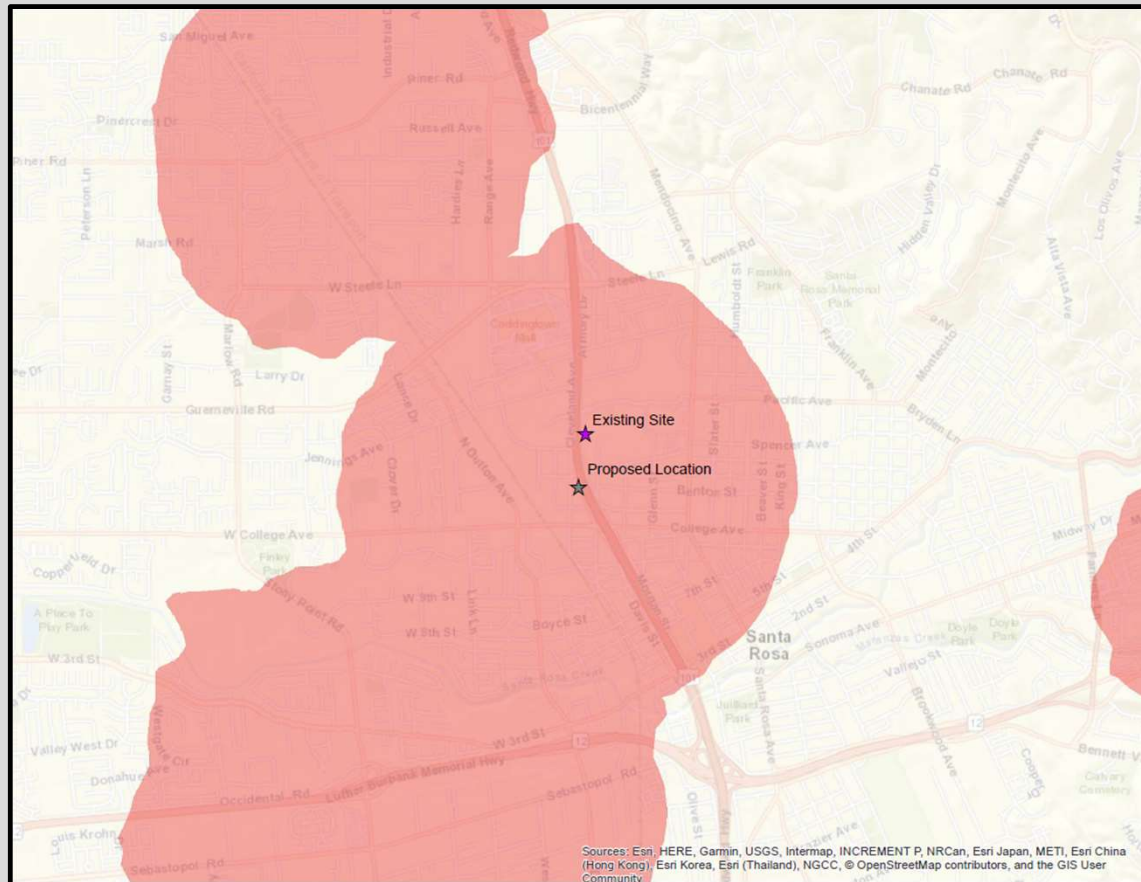
# Propagation Maps

## Existing Coverage



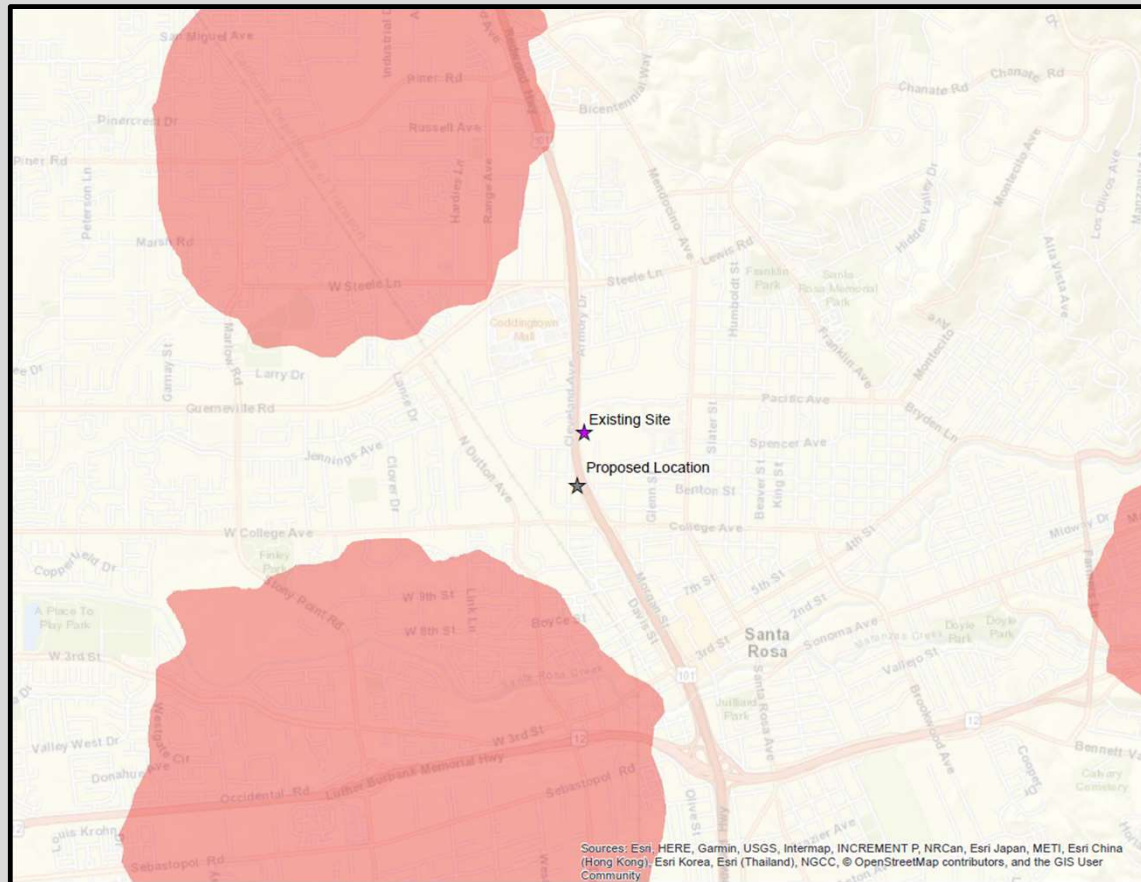
# Propagation Maps

## Proposed Coverage



# Propagation Maps

## Loss of Coverage





# Why Crown Castle?



## State & Federal Compliance

- EPA, FAA & FCC
- In-house legal team dedicated to compliance issues



## Safety

- Yearly ground-based inspections
- Structural inspection every three years (national standard)
- Incident Response & Disaster Recovery Program



## Network Operations Center

- Open 24/7
- Monitors critical systems
- Responds to network outages
- Calls answered by live representatives

# Thank you



For further information please contact:

Jacob Sparks

[Jacob.Sparks@crowncastle.com](mailto:Jacob.Sparks@crowncastle.com)

941-309-4617

Tim Page

[Tim.Page@crowncastle.com](mailto:Tim.Page@crowncastle.com)

916-622-6323