



# Parks Maintenance Updates

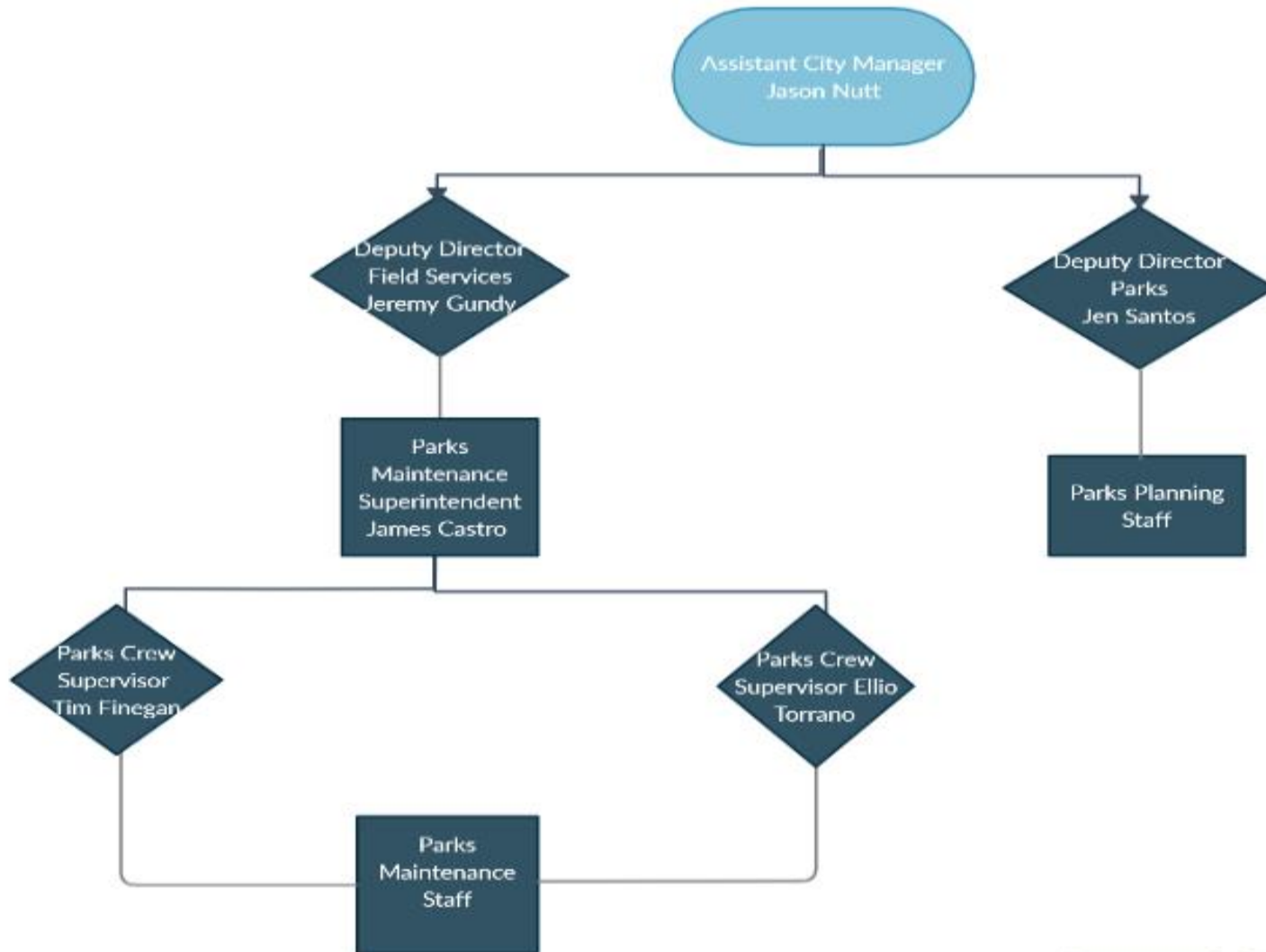
James Castro  
Parks Superintendent

Board of Community Services  
August 25, 2021

# Staffing

- In 2008 Parks Maintenance had 57 employees
- Today we have 23 employees that maintain 1036 acres of park land (-40% from 2008)
- National average for Parks staff = 16.5 acres per FTE (National Recreation and Park Association)
- City of SR = 45 acres per FTE (full-time employee) not including median/roadside landscaping.
- Parks would need an additional 40 maintenance FTE's to meet the national average.
- Parks Maintenance also oversees 73 acres of median/roadside landscaping

# Organizational Structure of Parks



# Water Reduction in Parks

Parks is complying with the Stage 3 water use restrictions by reducing our irrigation within the parks by 20%.

We have made those reductions to areas outside of sports fields and Community Parks. Community Parks and sports fields will continue to be irrigated regularly to support our community outdoor spaces.

Although water features, including the spray ground at the Prince Gateway Park, are permitted to operate during Stage 3 of the Water Shortage Contingency Plan, the City will not operate the splash pad this season.

All drinking fountains and hydration stations will continue normal operation.

# Parks Volunteer Program

Parks is working on revitalizing the Parks Volunteer Program to create a more robust and inclusive opportunity for the City of Santa Rosa and its citizens to enhance and protect the parks in our community.

We are working on developing a volunteer clean-up day once a month to contribute to the following:

*Increase the public's awareness of the values provided by local parks by providing volunteer and educational activities in conjunction with community partners.*

*Support Parks Volunteers who serve as additional “eyes, ears and a voice” to identify and report undesirable conditions and activities.*

*Provide timely and effective response to citizens' concerns regarding park related maintenance, safety, and recreational issues.*

Park maintenance staff typically provide about 300 hours annually while leveraging 3,000 – 5,000 hours of volunteer work on park projects.

# Parks Maintenance Signs

- Parks is in the process of designing signs to be placed in parks around the City to better assist the public in contacting Parks Maintenance.
- *For Parks Maintenance related issues, please email Parks staff at **[parksmaintenance@srcity.org](mailto:parksmaintenance@srcity.org)***
- *For urgent matters, please call 707-543-3770.*

# Questions?