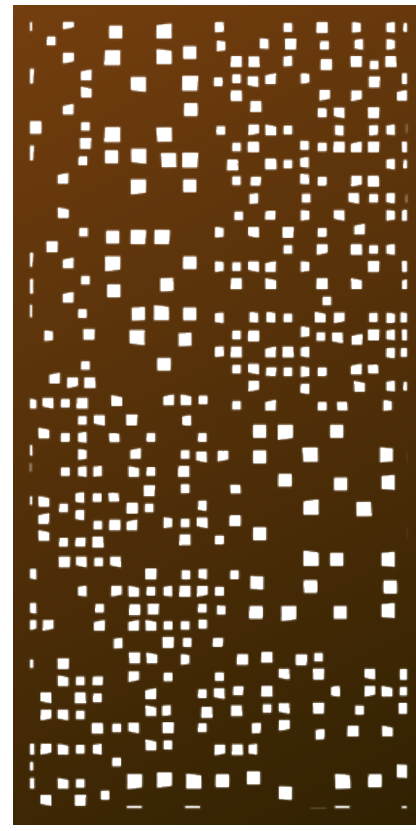


Parasoleil

6510 W 91st Ave, Suite 100  
Westminster, CO 80031  
(303) 589-4524  
hello@parasoleil.com  
www.parasoleil.com

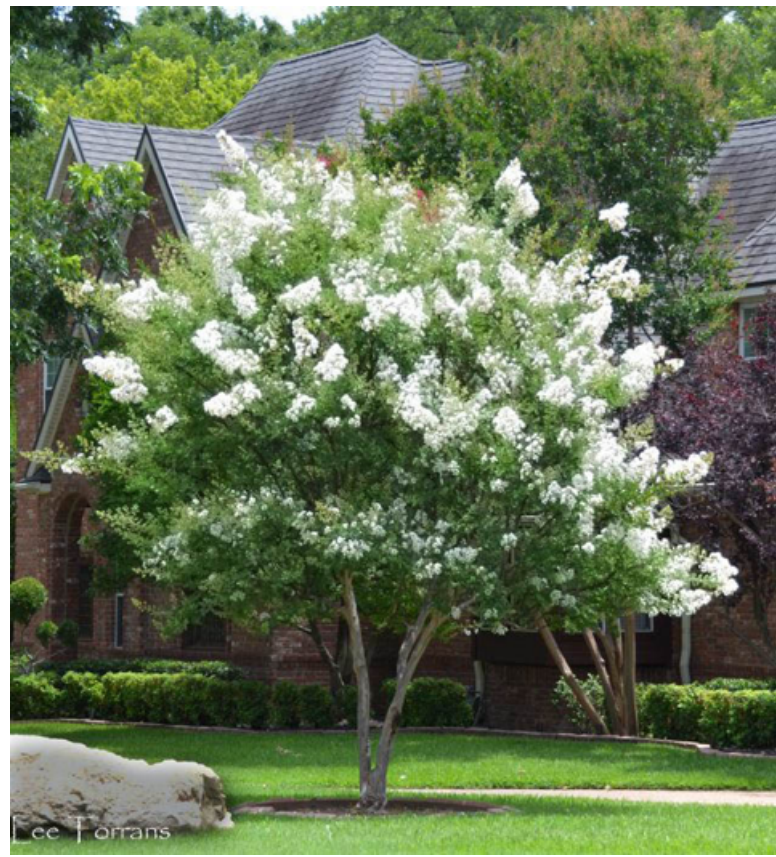
### Gotham® (GTM)

A world gone mad needs a hero. Our nod to the caped heroes, heroines, and all the villains we love to cheer and jeer, is a playful mix of geometry, perspective, and whimsy... with a dash of raspy voice too. This contemporary design captures our imagination and tells its own story.



Shade Score	9/10
Privacy Score	10/10
Biomimicry Score	5/10
Structural Strength Score	8/10
Small Hole Size Score	10/10
MESH Score	4/10
Openness	12% Open

All Parasoleil patterns, products, and designs are copyright/trademark/patent protected. Any unauthorized use, including representation, production, or manufacturing, is prohibited under law.



LAGERSTROEMIA 'NATCHEZ WHITE'



PRUNUS CAROLINIANA COMPACTA



SALVIA HOT LIPS

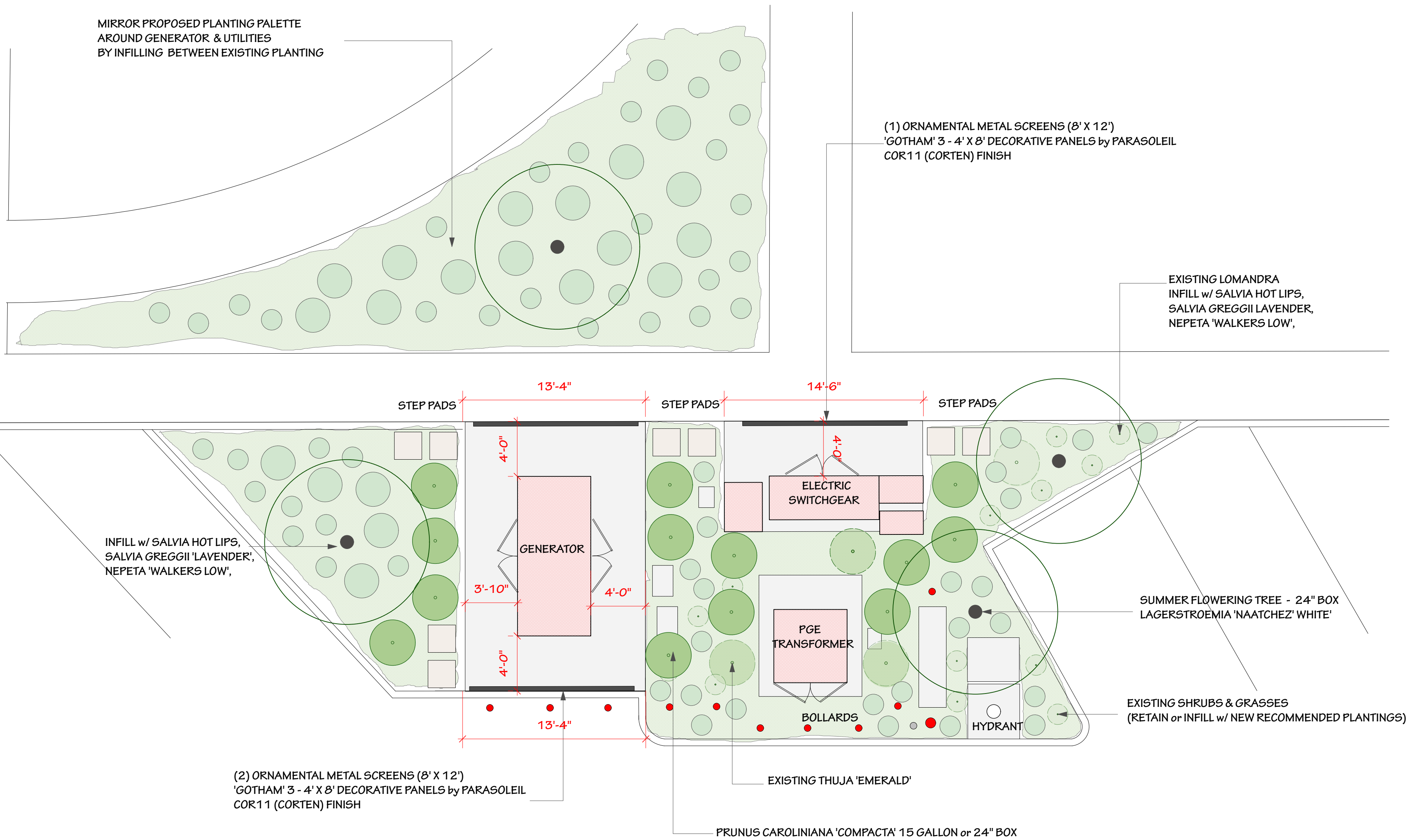


SALVIA GREGGII LAVENDER



NEPETA WALKERS LOW

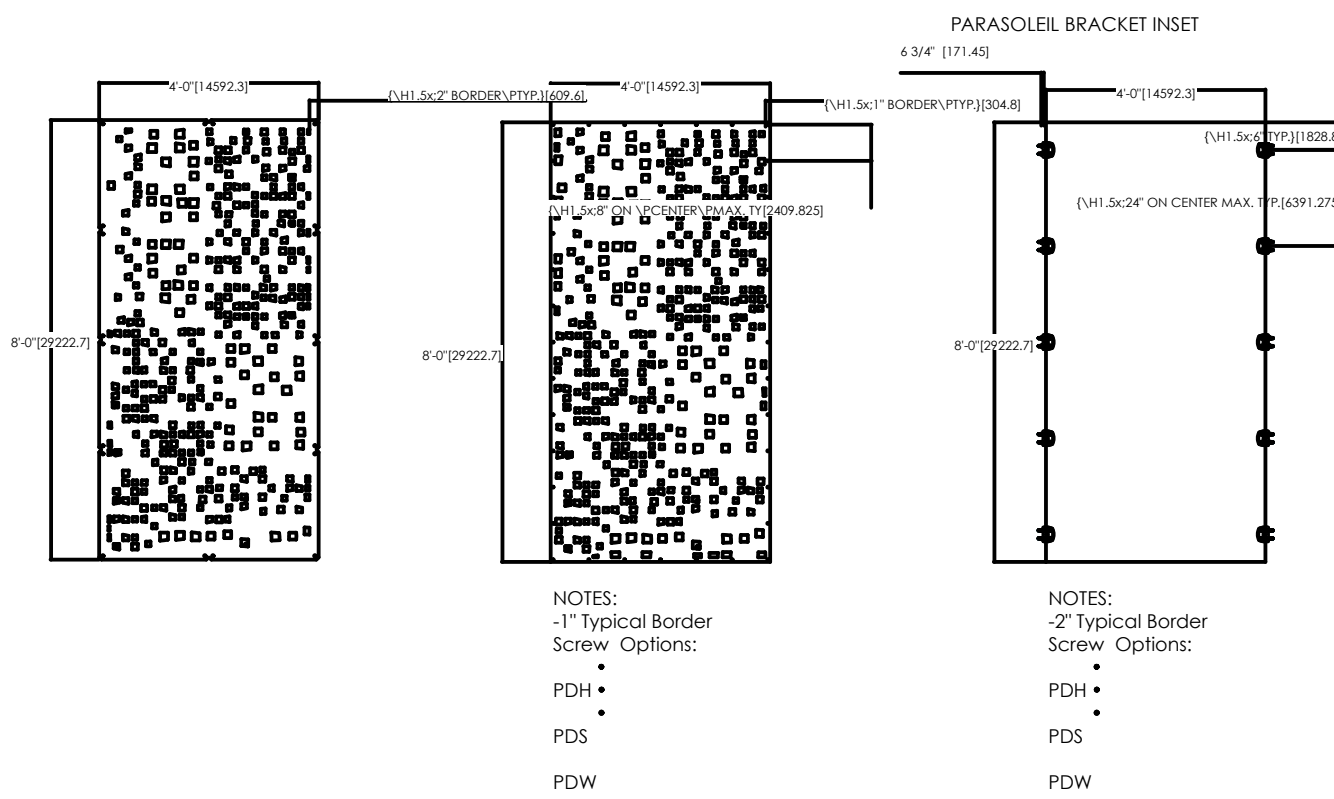
### PROPOSED PLANTING PALETTE



### GOTHAM ©

### DIRECT MOUNT SYSTEM

### PBI SYSTEM ®



hello@parasoleil.com

303-589-4524  
ALL PARASOLEIL PATTERNS ARE PROTECTED UNDER COPYRIGHT © LAW. COPYING, MODIFYING, OR ANY UNAUTHORIZED USE OF PARASOLEIL PATTERNS IS STRICTLY PROHIBITED.

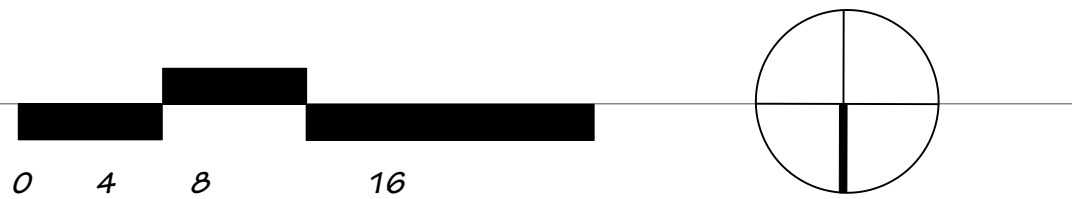
Panel shown in 4'x8' nominal size. Panels can be made in any custom shape & size up to 5'x10'. Every project is different depending on the application, code requirements and site conditions, but for general planning purposes the following guidelines below can be a good place to start:

1/8" thick material can span up to around 36"  
3/16" thick material can span up to around 48"  
1/4" thick material can span up to around 54"

For recommended hardware applications reference the Design Guides.  
Available at: <https://parasoleil.com/library>

When you're ready, Parasoleil can provide pre-engineered panel thickness recommendations with a high level of accuracy at no charge that are based on project specific design and engineering info.

### LANDSCAPE & PLANTING PLAN



LORI CAGWIN  
LANDSCAPE ARCHITECTURE  
11 Jasmine Street, Yountville, California 94599  
707.945.0835 Phone/Facsimile  
lori@loricagwin.com www.loricagwin.com



### SITE PLAN : LANDSCAPE & PLNTING PLAN

OVA CAC GENERATOR SCREENING  
6633 OAKMONT DRIVE  
SANTA ROSA, CA

Revisions

Date: 7-26-21

Drawn By: LC

Job: OVA CAC Generator

Sheet

L1.0

of sheets



DESIGN CONCEPT NARRATIVE

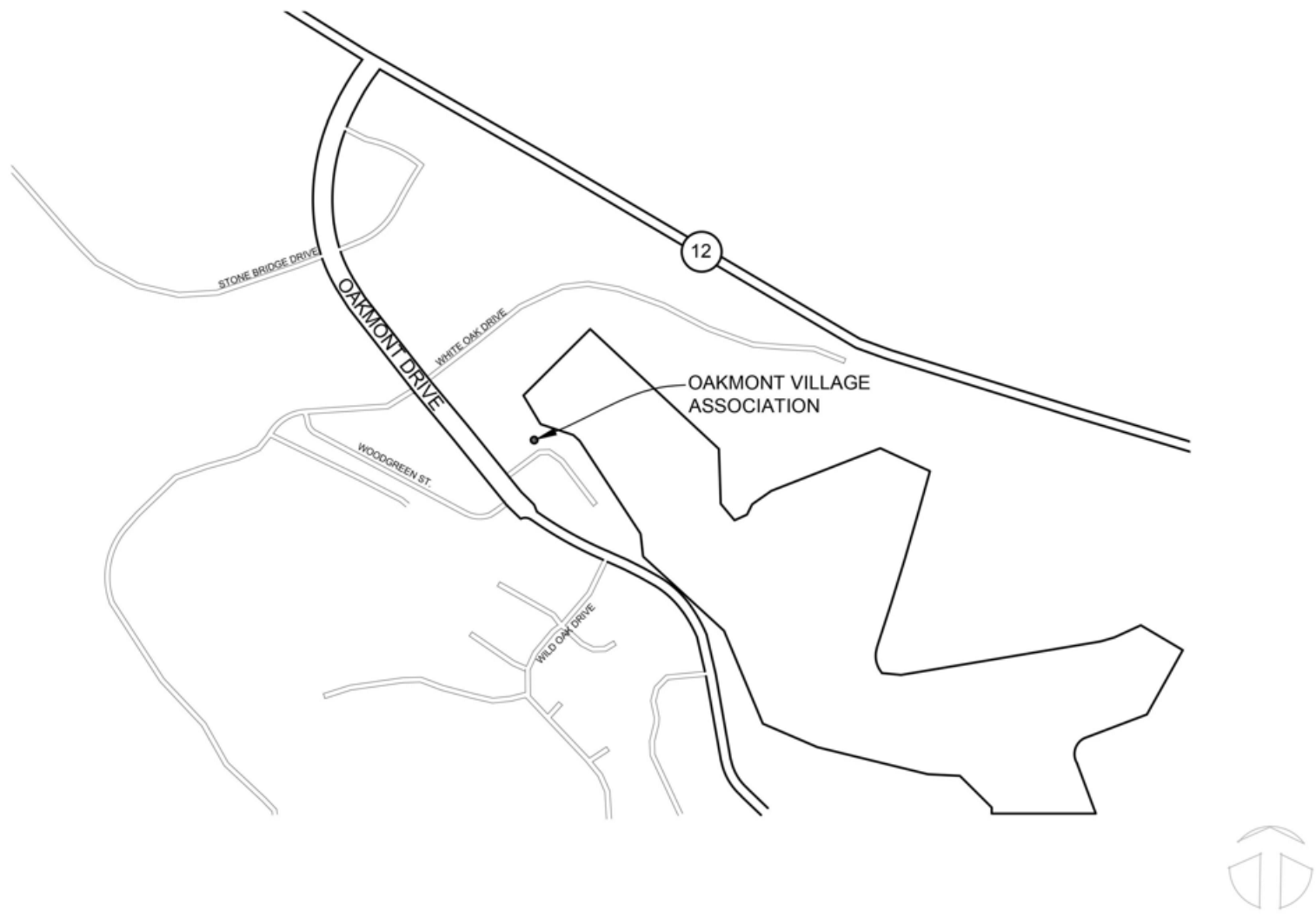
OAKMONT VILLAGE ASSOCIATION IS PROPOSING SCREENING OF THE EXISTING GENERATOR AND ABOVE GRADE UTILITIES IN COMPLIANCE WITH SETBACKS MAINTENANCE REQUIREMENTS PER PGE CLEARANCES AND LOCATION REQUIREMENTS FOR ENCLOSURES, PADS AND UNDERGROUND EQUIPMENT # 051122 PAGES 1 THRU 28.

PARASOLEIL 'GOTHAM' PANELS HAVE BEEN SELECTED WITH A COR 1 1 (CORTEN) FINISH. PANELS ARE STOCK 4' X 8' BUT CAN BE SPECIALLY ORDERED TO FIT THE EXACT LENGTH OF CONCRETE SLAB IF DESIRED. PANELS TO BE INSTALLED PER MANUFACTURERS RECOMMENDED AS DIRECT MOUNT. POSTS TO BE L BRACKETED INTO EXISTING CONCRETE. SHOP DRAWINGS TO BE PROVIDED BY THE MANUFACTURER.

ACCESS IN TO THE EQUIPMENT TO BE PROVIDED WITH 2' X 2' CONCRETE STEP PADS INTO PLANTER BEDS .

PROPOSED PLANT MATERIAL TO BE DROUGHT TOLERANT, FIRE RESISTANT AND ABLE TO PROVIDE ADDITIONAL SCREENING AROUND STRUCTURES IN ADDITION TO FOREGROUND PLANTING AS SHOWN IN THE PRELIMINARY PLANTING PALETTE.

PLANTING AND IRRIGATION IMPROVEMENTS TO BE IN COMPLIANCE WITH MWEL0 WATER SAVINGS ORDINANCE, MAWA WATER ALLOWANCE AND WUCOLS LOW WATER USE PLANT MATERIAL SELECTION.



VICINITY MAP  
NTS



EXISTING WEST FACING ELEVATION



EXISTING NORTH FACING ELEVATION



EXISTING EAST FACING ELEVATION



EXISTING SOUTH FACING ELEVATION



WEST FACING PLANTING LAYOUT



NORTH FACING SCREEN & PLANTING LAYOUT



EAST FACING PLANTING LAYOUT



SOUTH FACING SCREEN & PLANTING LAYOUT