

Minor Design Review Oakmont Generator Screening and Landscaping DR21-048

6633 Oakmont Drive

October 21, 2021

Adam Ross, Interim Senior Planner
Planning and Economic Development

DESIGN CONCEPT NARRATIVE

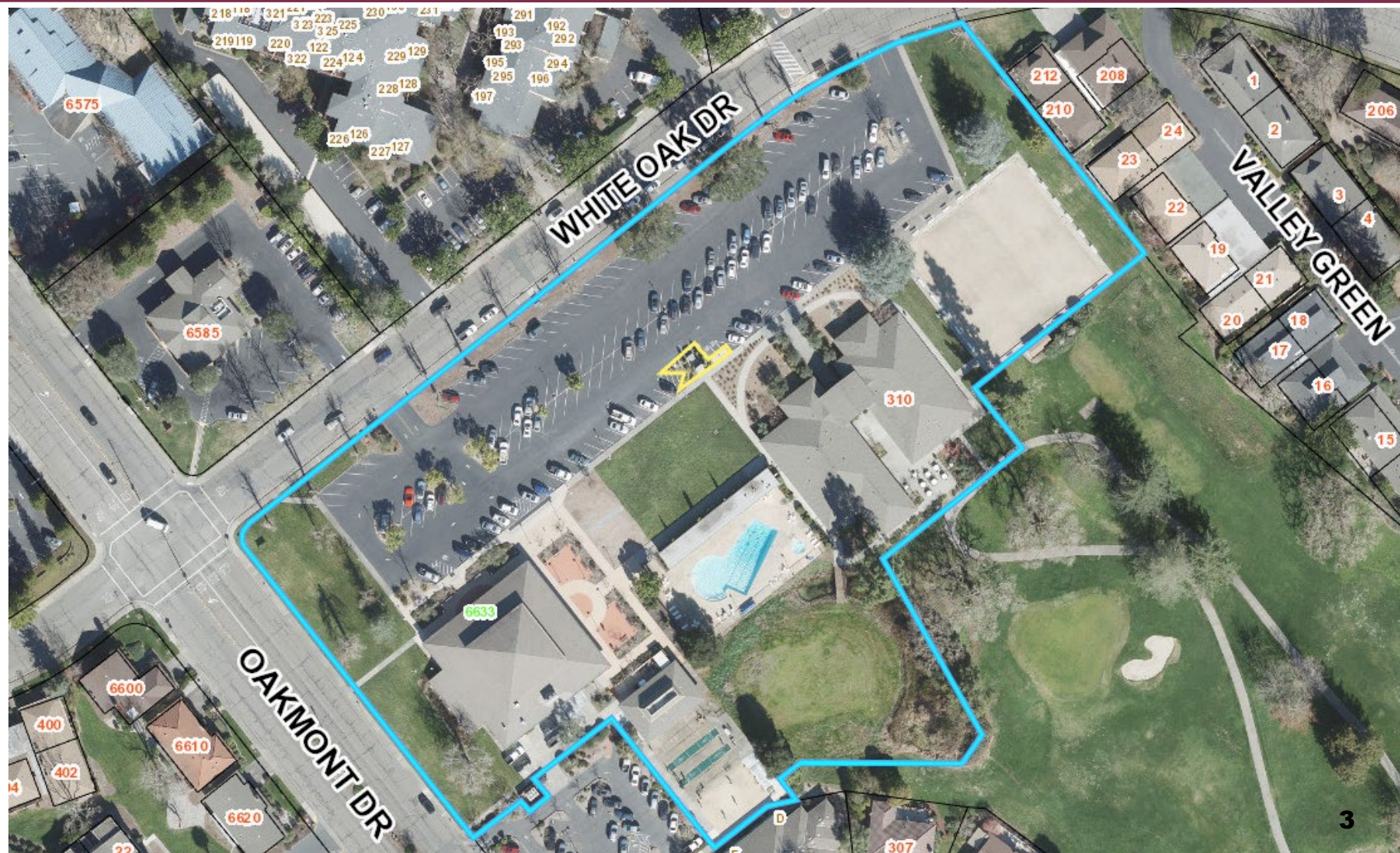
OAKMONT VILLAGE ASSOCIATION IS PROPOSING SCREENING OF THE EXISTING GENERATOR AND ABOVE GRADE UTILITIES IN COMPLIANCE WITH SETBACKS MAINTENANCE REQUIREMENTS PER PGE CLEARANCES AND LOCATION REQUIREMENTS FOR ENCLOSURES, PADS AND UNDERGROUND EQUIPMENT # 051122 PAGES 1 THRU 28.

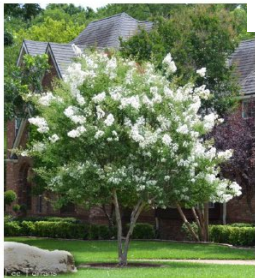
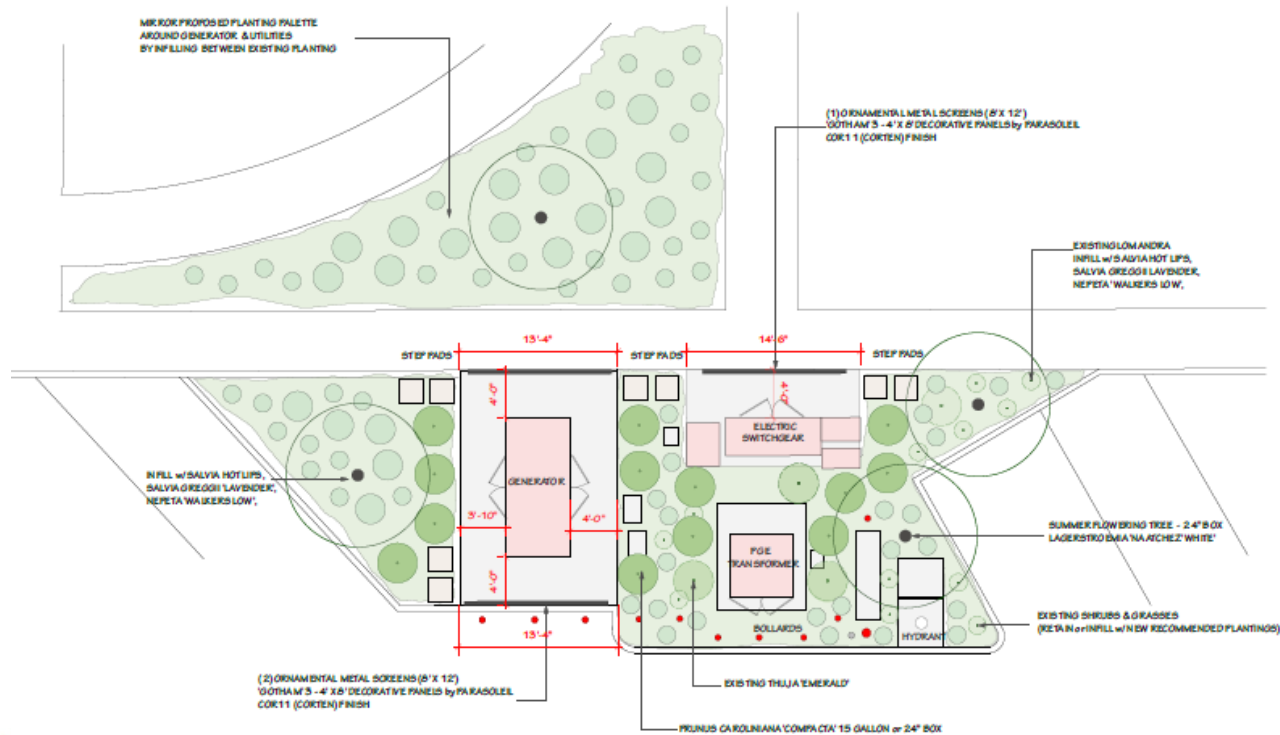
PARASOLEIL 'GOTHAM' PANELS HAVE BEEN SELECTED WITH A COR 11 (CORTEN) FINISH. PANELS ARE STOCK 4' X 8' BUT CAN BE SPECIALLY ORDERED TO FIT THE EXACT LENGTH OF CONCRETE SLAB IF DESIRED. PANELS TO BE INSTALLED PER MANUFACTURERS RECOMMENDED AS DIRECT MOUNT. POSTS TO BE L BRACKETED INTO EXISTING CONCRETE. SHOP DRAWINGS TO BE PROVIDED BY THE MANUFACTURER.

ACCESS IN TO THE EQUIPMENT TO BE PROVIDED WITH 2' X 2' CONCRETE STEP PADS INTO PLANTER BEDS .

PROPOSED PLANT MATERIAL TO BE DROUGHT TOLERANT, FIRE RESISTANT AND ABLE TO PROVIDE ADDITIONAL SCREENING AROUND STRUCTURES IN ADDITION TO FOREGROUND PLANTING AS SHOWN IN THE PRELIMINARY PLANTING PALETTE.

PLANTING AND IRRIGATION IMPROVEMENTS TO BE IN COMPLIANCE WITH MWEL0 WATER SAVINGS ORDINANCE, MAWA WATER ALLOWANCE AND WUCOLS LOW WATER USE PLANT MATERIAL SELECTION.





LAGERSTROEMIA 'NATCHEZ WHITE'



PRUNUS CAROLINIANA 'COMPACTA'



SALVIA 'HOT LIPS'

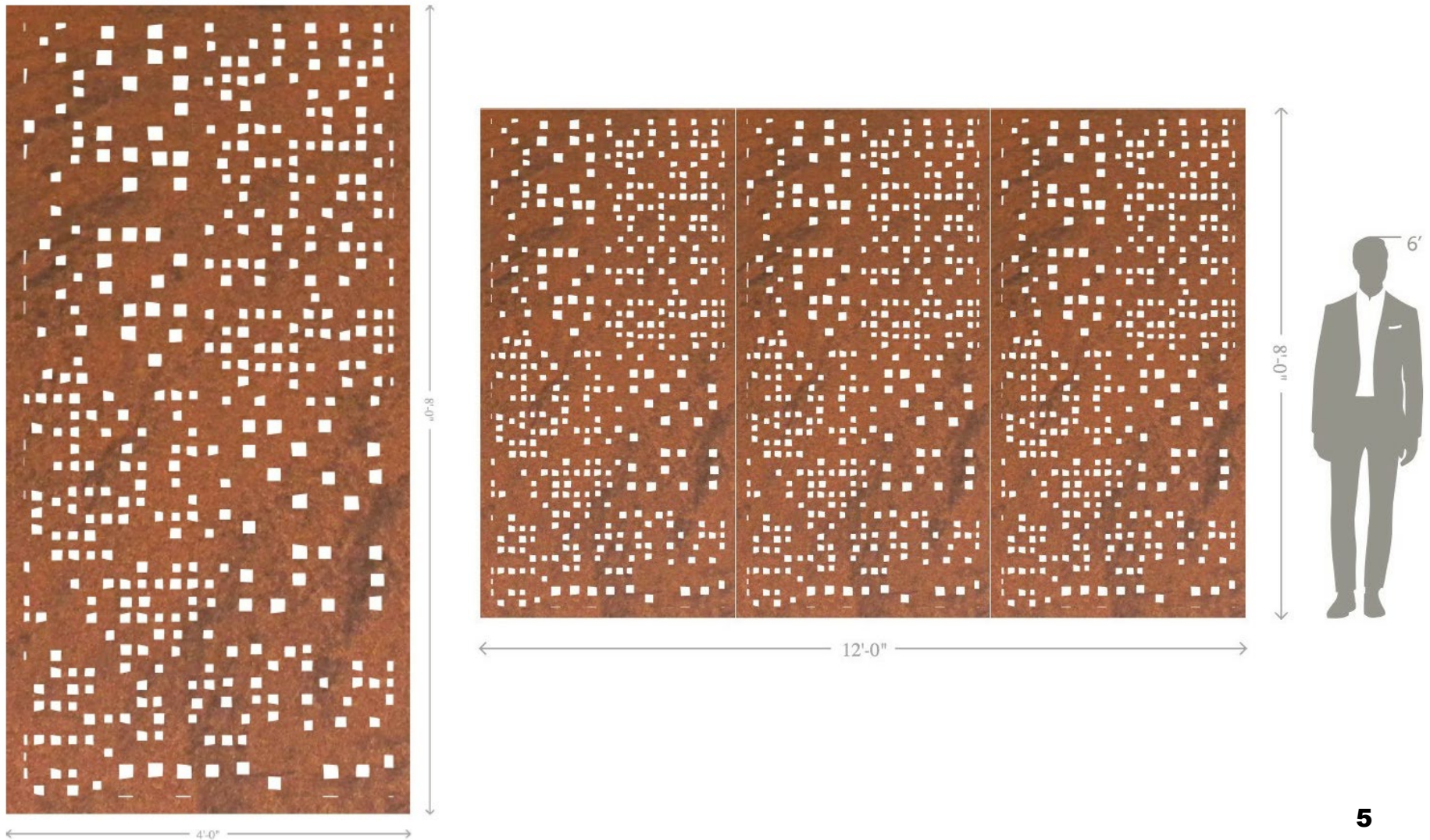


SALVIA GREGGII 'LAVENDER'



NEPETA 'WALKERS LOW'

Metal Screening





EXISTING WEST FACING ELEVATION



EXISTING NORTH FACING ELEVATION



WEST FACING PLANTING LAYOUT



NORTH FACING SCREEN & PLANTING LAYOUT



EXISTING EAST FACING ELEVATION



EXISTING SOUTH FACING ELEVATION



EAST FACING PLANTING LAYOUT



SOUTH FACING SCREEN & PLANTING LAYOUT

Recommendation

The Planning and Economic Development Department recommends that the Zoning Administrator, by resolution, approve a Minor Design Review for the Oakmont Generator Screening and Landscaping project, located at 6633 Oakmont Drive, File No. DR21-048.



Adam Ross, Interim Senior Planner
Planning and Economic Development
ARoss@srcity.org
(707) 543-4705

