

Hampton Inn and Suites Sign Variance

File No. SI21-054

3815 Airway Dr

November 4, 2021

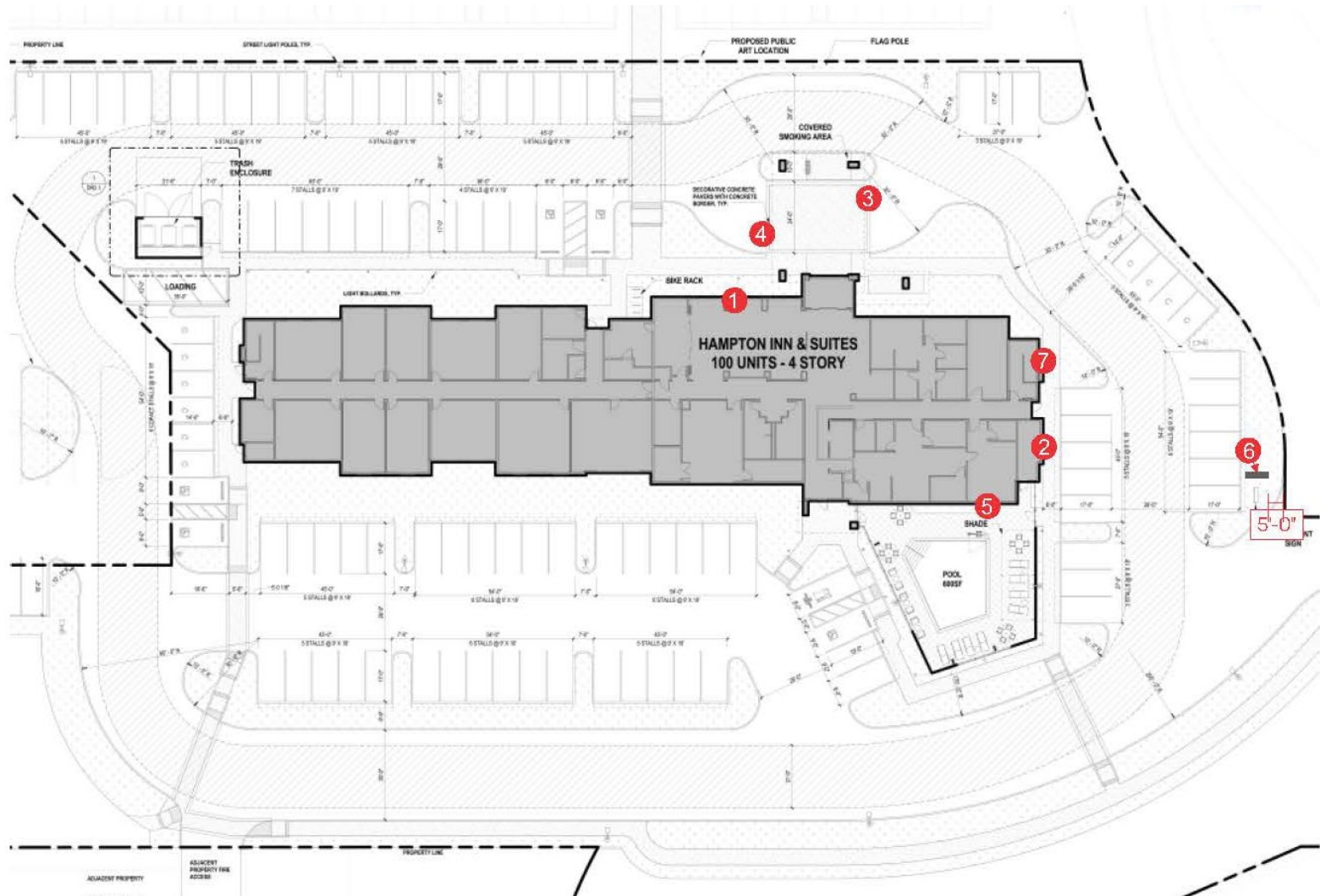
Monet Sheikhal, City Planner
Planning and Economic Development

Sign Variance application to install six signs, including three wall signs, one monument sign, and two welcome signs, for total of 419.3-square feet.

3815 Airway Dr



3815 Airway Dr Site Plan



NORTH ELEVATION

SCALE: 1/32" = 1'-0"



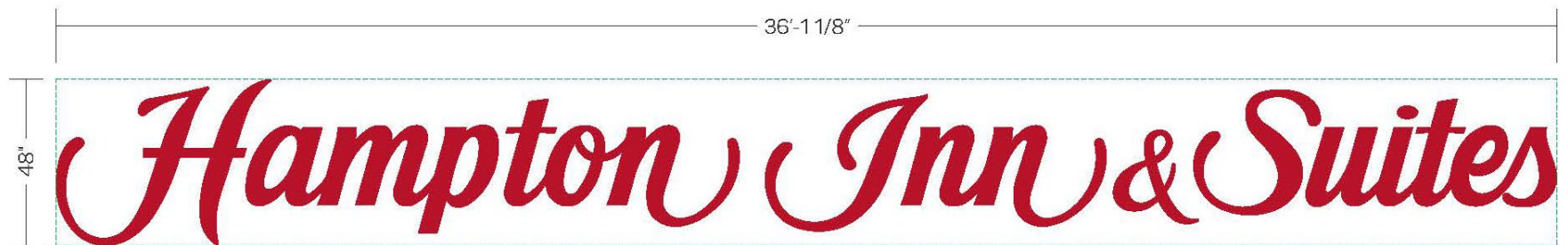
BOXED AREA: 144.38 SQ FT



AIL

SOUTH ELEVATION

SCALE: 1/32" = 1'-0"



BOXED AREA: 144.38 SQ FT

WALL SIGN DETAIL
SCALE: 1/4" = 1'-0"

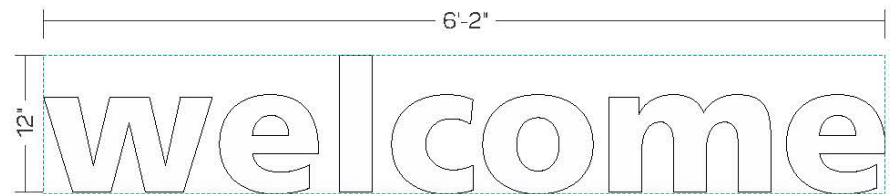
5

EAST ELEVATION

SCALE: 3/64" = 1'-0"

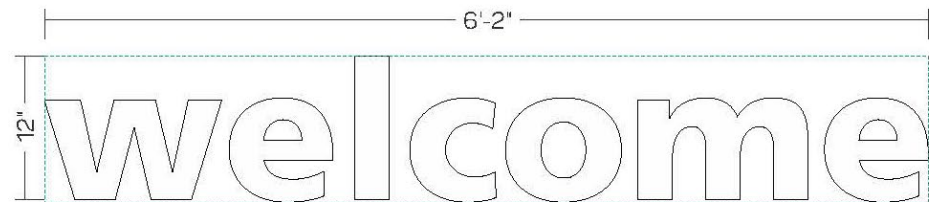


2 WALL SIGN DETAIL
SCALE: 1/4" = 1'-0"



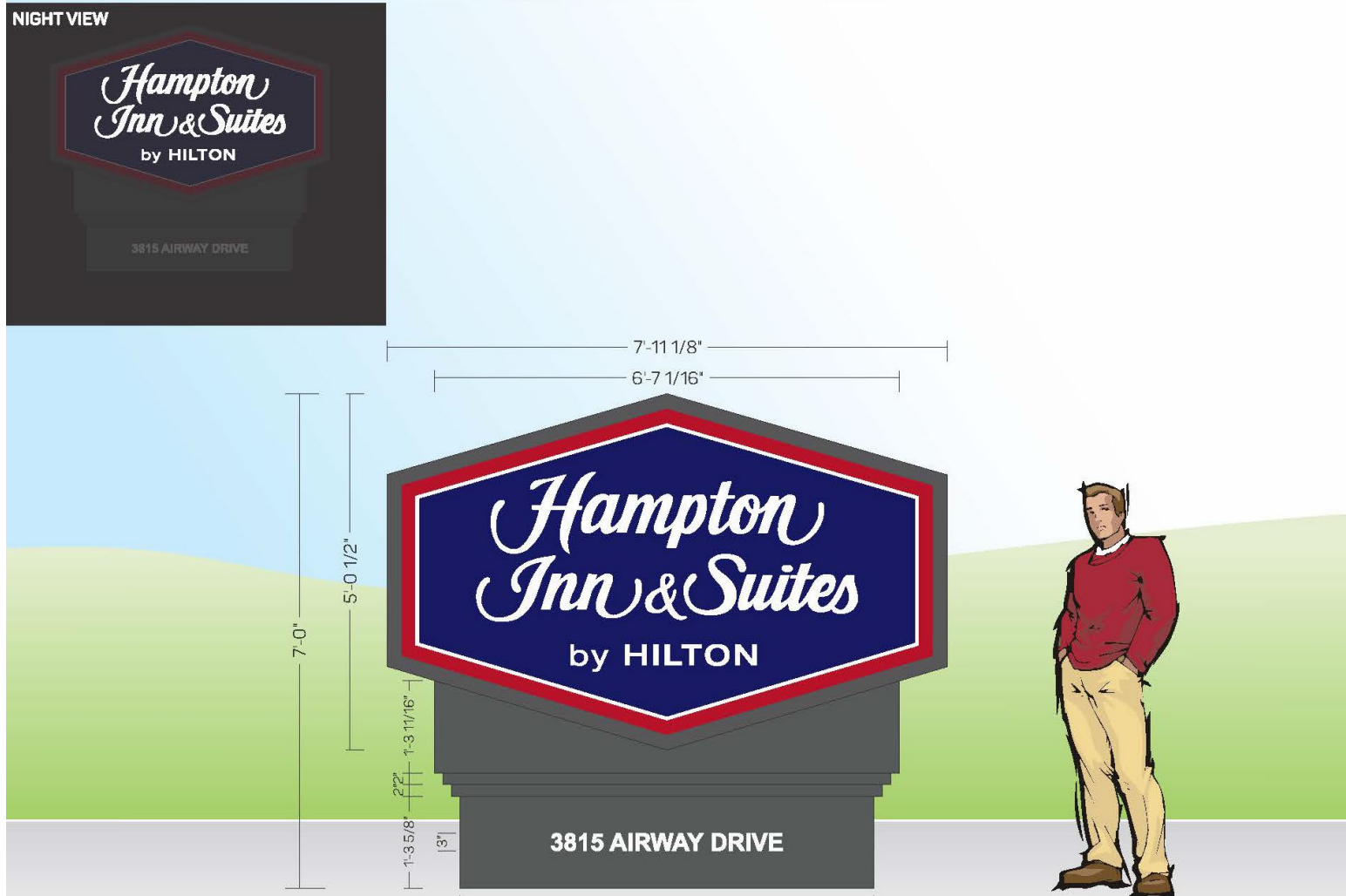
3 WELCOME LETTER DETAIL
SCALE: 3/4" = 1'-0"

WEST ELEVATION
SCALE: 3/64" = 1'-0"



BOXED AREA: 6.17 SQ FT

4 WELCOME LETTER DETAIL
SCALE: 3/4" = 1'-0"



The proposed project has been reviewed in compliance with the California Environmental Quality Act (CEQA) and qualifies for a Class 11 (Accessory Structure) categorical exemption pursuant to Section 15311(a).

The Planning and Economic Development Department recommends that the Zoning Administrator, by resolution, approve a Sign Variance for the property located at 3815 Airway Drive.

Questions

Monet Sheikhali, City Planner
Planning and Economic Development
msheikhali@srcity.org
(707) 543-4698