

# Water and Recycled Water Update

Board of Public Utilities Meeting

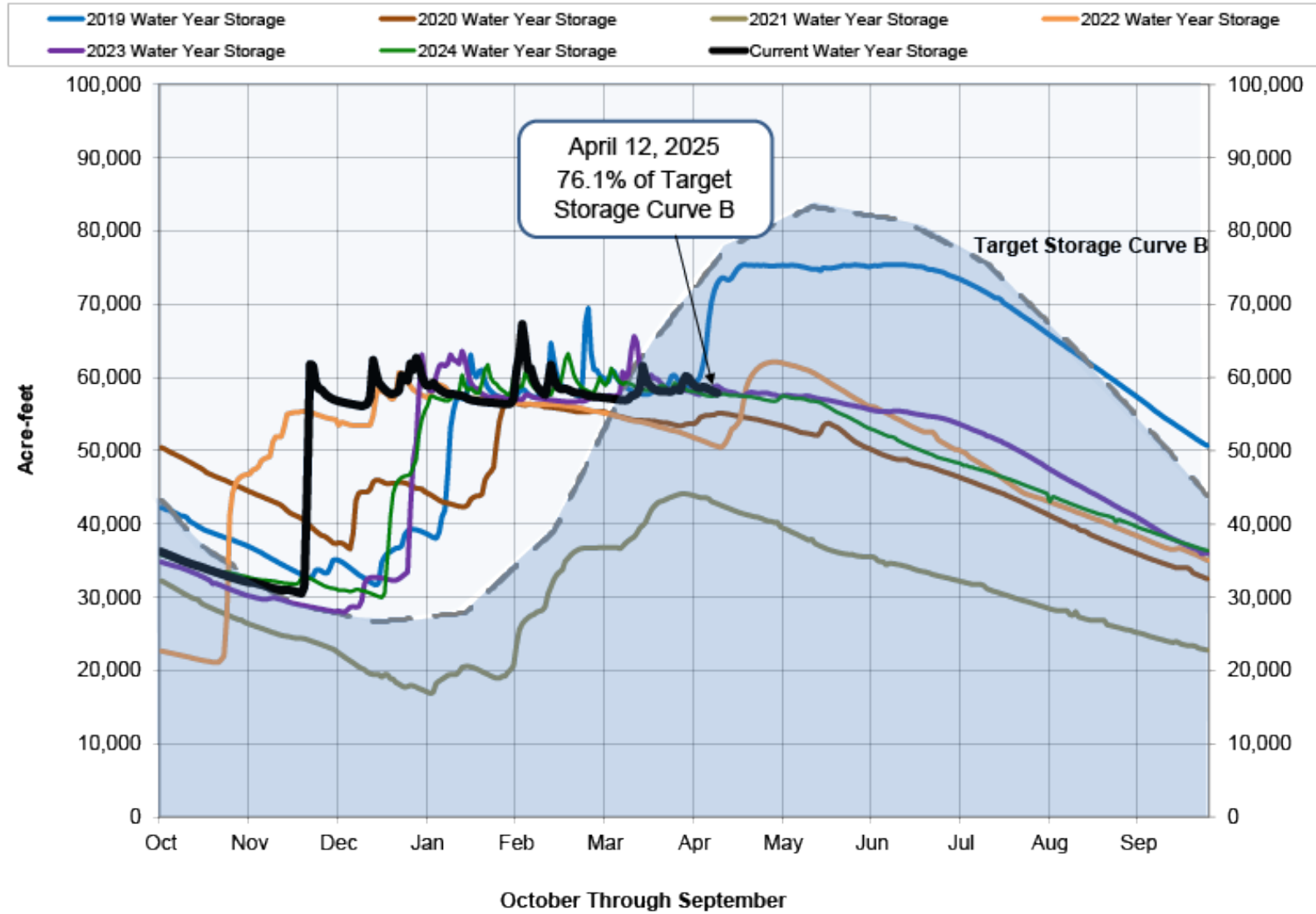
April 17, 2024

Peter Martin – Deputy Director, Water Resources

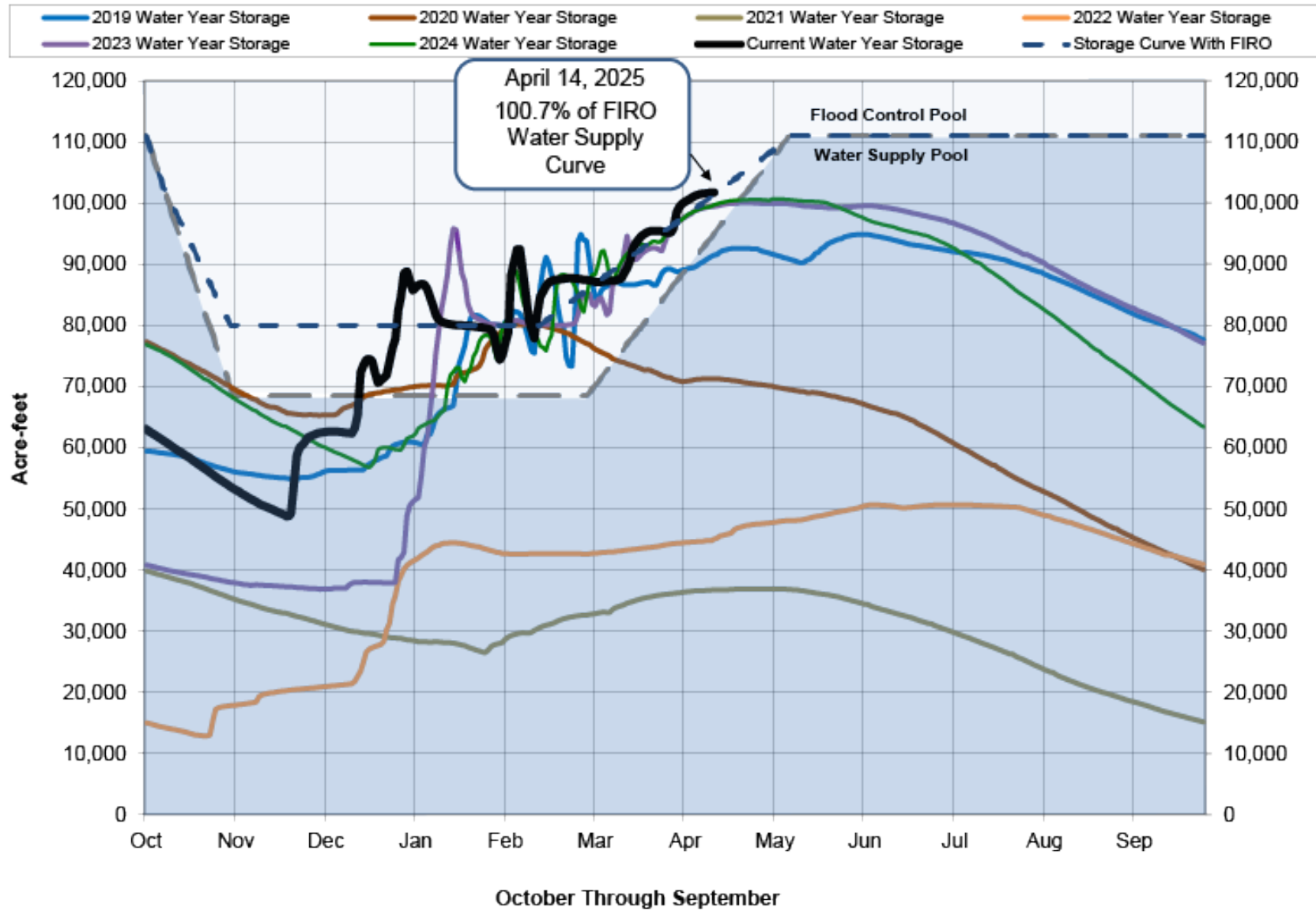
Andrew Romero – Reclamation Superintendent



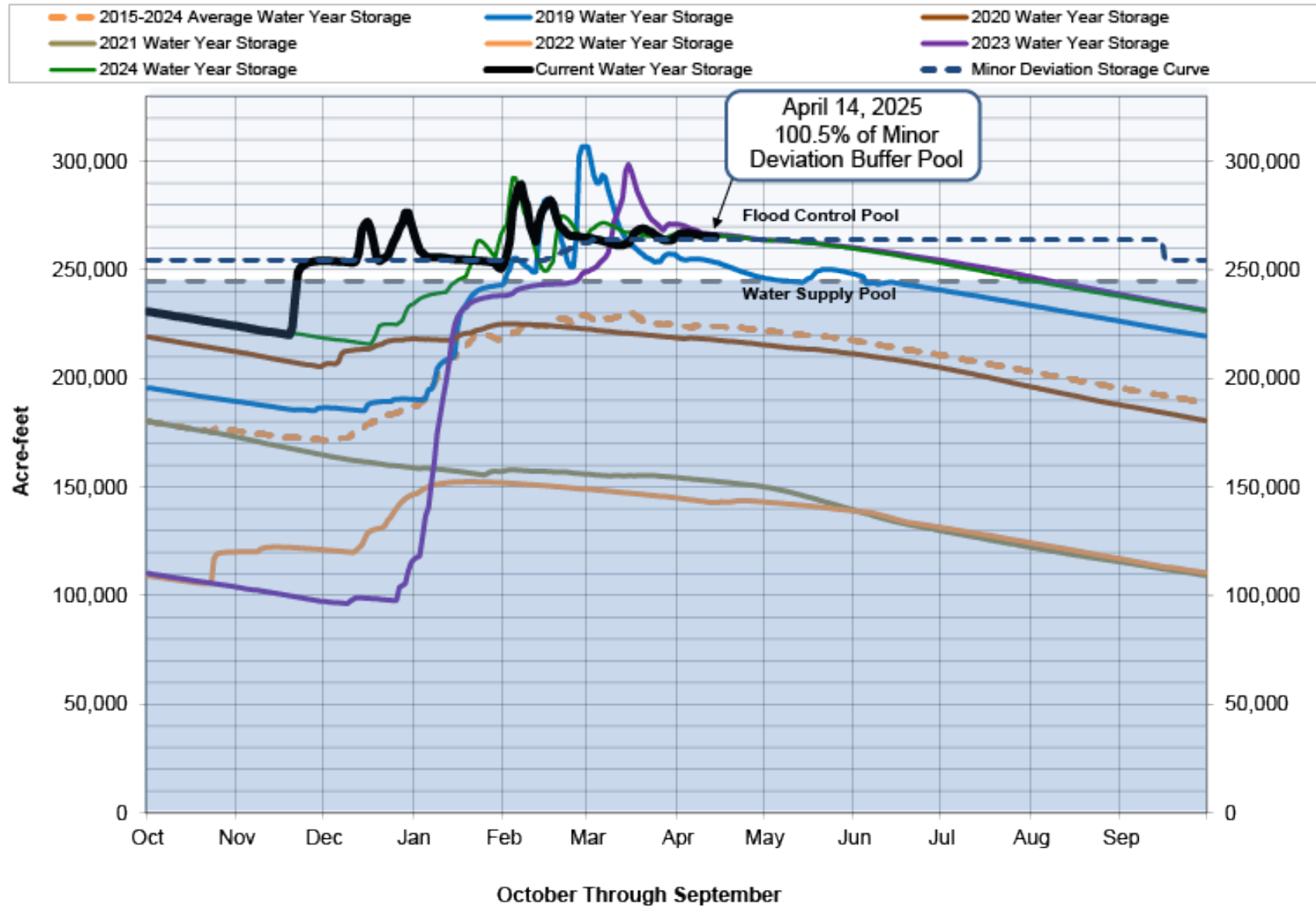
## Lake Pillsbury Storage



## Lake Mendocino Storage



## Lake Sonoma Storage



# May is Water Awareness Month

- **Proclamation and WUE Awards**
  - May 13<sup>th</sup> City Council
- **Eco Friendly Garden Tour**
  - Saturday, May 10th
  - 10 a.m. – 4 p.m.



<https://www.savingwaterpartnership.org/eco-friendly-garden-tour/>

# Sonoma County GSA's Outreach

- Voluntary Metering Program
- Voluntary Well Monitoring Program
- Water Use Efficiency Workshops
- Quarterly Newsletter:

[santarosaplaingroundwater.org/news](http://santarosaplaingroundwater.org/news)



# Santa Rosa Plain GSA Outreach

## How **WELL** do you know the Santa Rosa Plain GSA Subbasin?



**Location:** bounded by Sonoma Mountain and Mayacamas Mountains on the east and the Mendocino Range on the west

~**22 miles:** distance of the basin from north at Healdsburg to the south at Cotati

~**9 miles:** distance east to west at the widest point



**Principal sources of groundwater recharge:**

precipitation and infiltration from streams



**80,000 acres:** land covered by the subbasin, including Town of Windsor, Cities of Cotati, Rohnert Park, Santa Rosa, Sebastopol and unincorporated rural areas

36% Urban community areas  
26% Agricultural areas  
35% Native vegetation and surface water  
3% Classified as 'vacant'



**Acreage by crop types** in the subbasin (all water sources, not limited to groundwater-irrigation)

- Citrus & subtropical: **15.8 acres**
- Deciduous fruits & nuts: **141.4 acres**
- Grain: **2,777.1 acres**
- Pasture: **2482.7 acres**
- Truck nursery & berry: **559.3 acres**
- Vineyard: **9072.8 acres**
- Idle or unknown: **462.7 acres**
- Turf irrigation: **593 acres**



**1,499 acre-feet:** Estimated groundwater crop irrigation offset per year by alternative water sources (recycled water, surface water)



**81,951:** number of parcels in the subbasin



**8,650:** approximate number of **groundwater dependent parcels** (note, these numbers do not include those connected to a public water system, and some parcels have more than one use)

**6721:** Residential  
**498:** Commercial  
**937:** Agricultural  
**129:** Turf



**32,000:** number of people in Santa Rosa Plain that rely solely on groundwater for drinking and other basic water needs.

**4,000-5,500** estimated number of domestic wells in the Santa Rosa Plain subbasin

**< 200 ft:** depth of most wells in the shallow aquifer

**~ 200-800 ft:** typical depth of wells in the deep aquifer

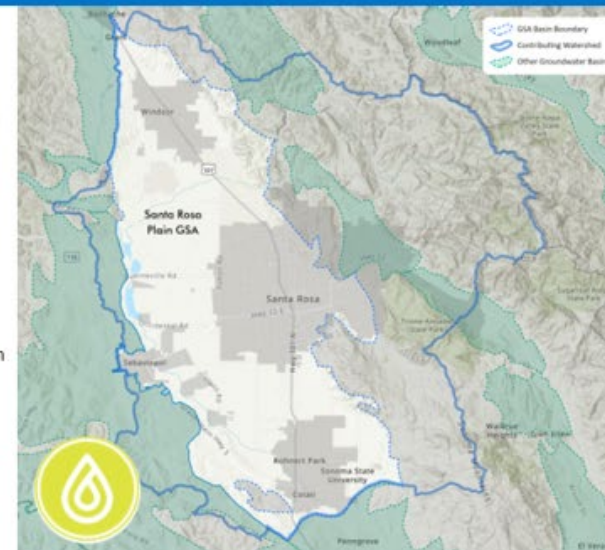


**113:** number of groundwater-level monitoring wells located in the subbasin and contributing watershed

**Status of Conditions** defined by the

Sustainable Groundwater Management Act that the GSA is actively addressing via the implementation of projects and programs in the Groundwater Sustainability Plan:

- **Land Subsidence:** **no evidence for concerns**
- **Groundwater quality:** **no evidence for concerns**
- **Interconnected surface water:** **more data needed**
- **Reduction of storage:** **generally stable, potential for future declines**
- **Lowering of groundwater levels:** **generally stable, limited areas of declines**



### Want to learn more?

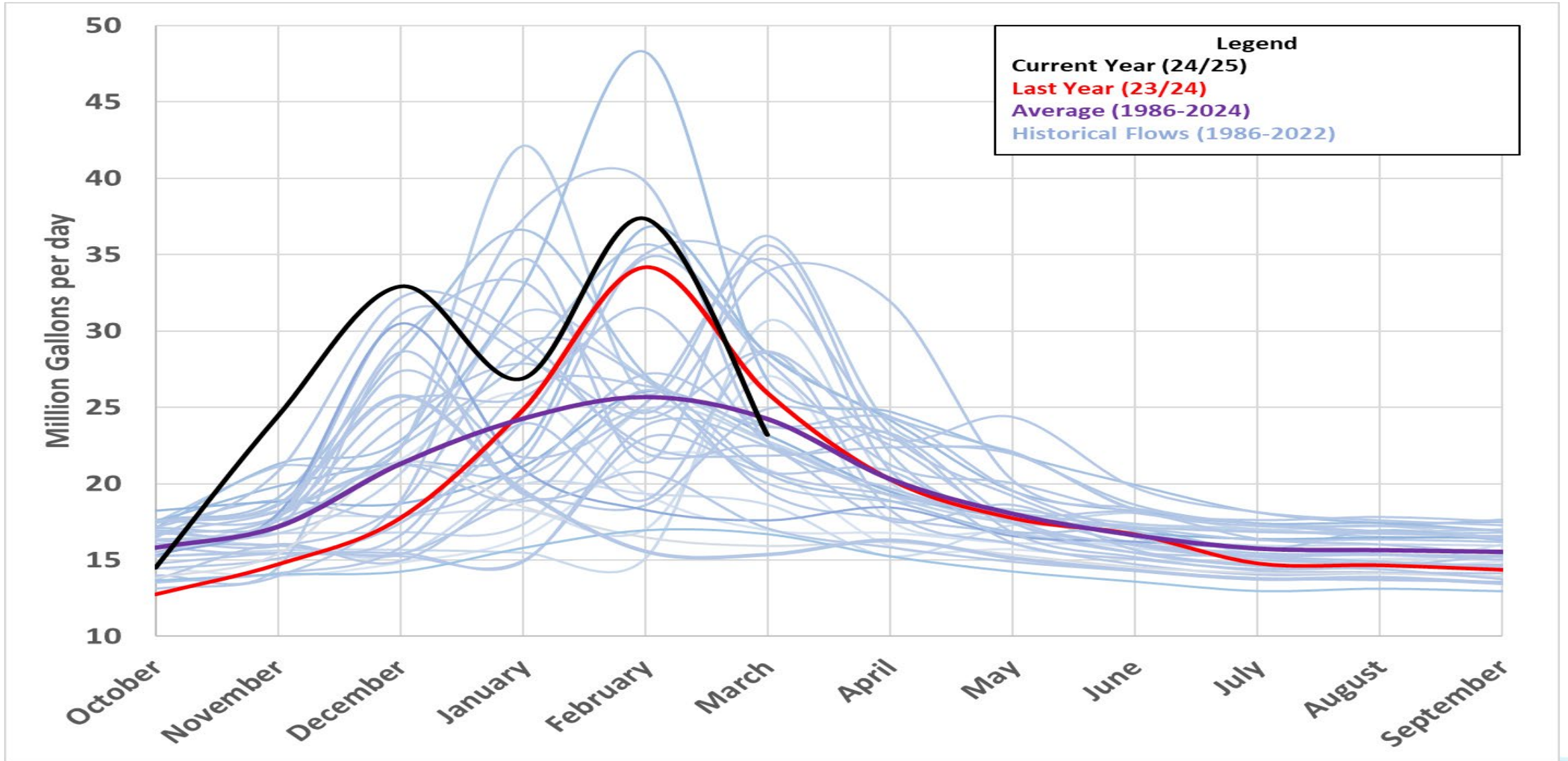
Visit our website to access the [Groundwater Sustainability Plan](#) and find detailed information on the status of this work to manage groundwater resources in our [Annual Report](#). Join in the community-wide effort to support sustainable groundwater with one of our community programs: [LEVEL UP!](#) – Voluntary Well Monitoring, [Flow Smart](#) – Voluntary Flow – Metering, and [Well Aware](#) – tools for building local groundwater sustainability.

**SantaRosaPlainGroundwater.org**

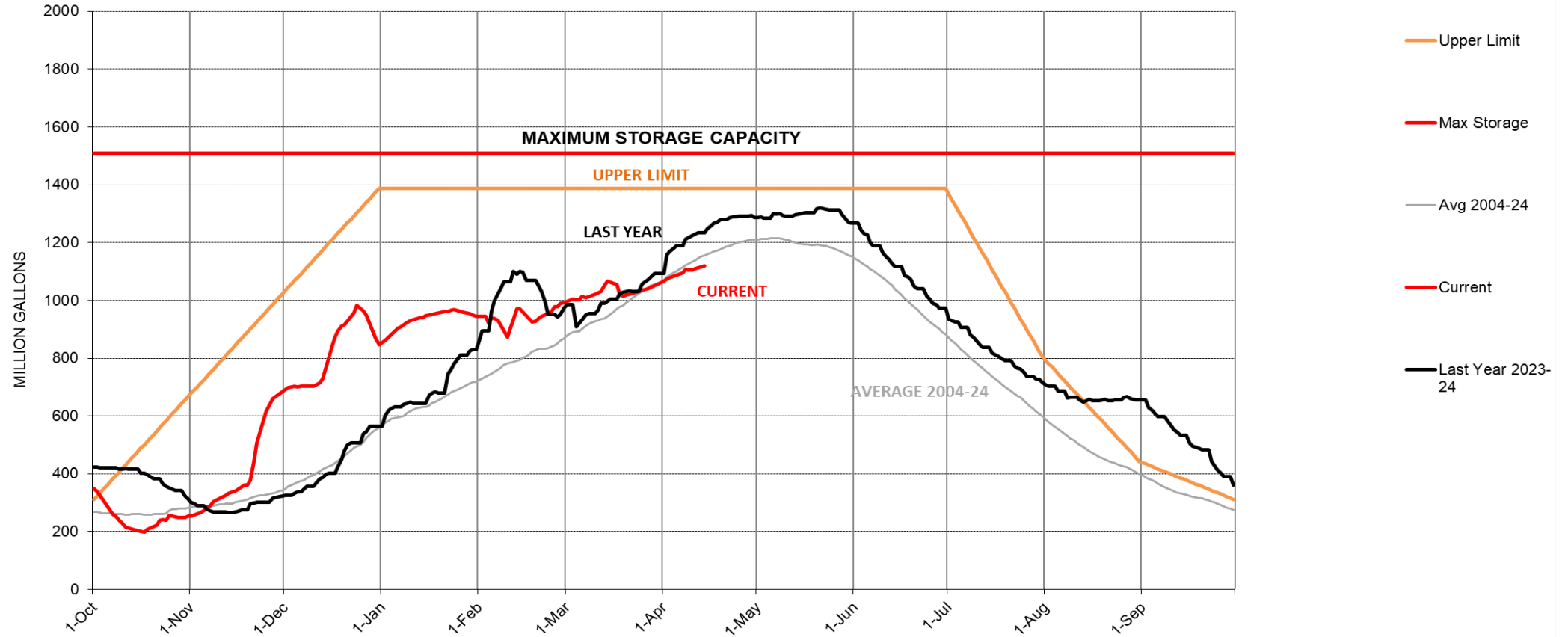


# Recycled Water Update

# Recycled Water Production



# Recycled Water Storage



# Questions?