

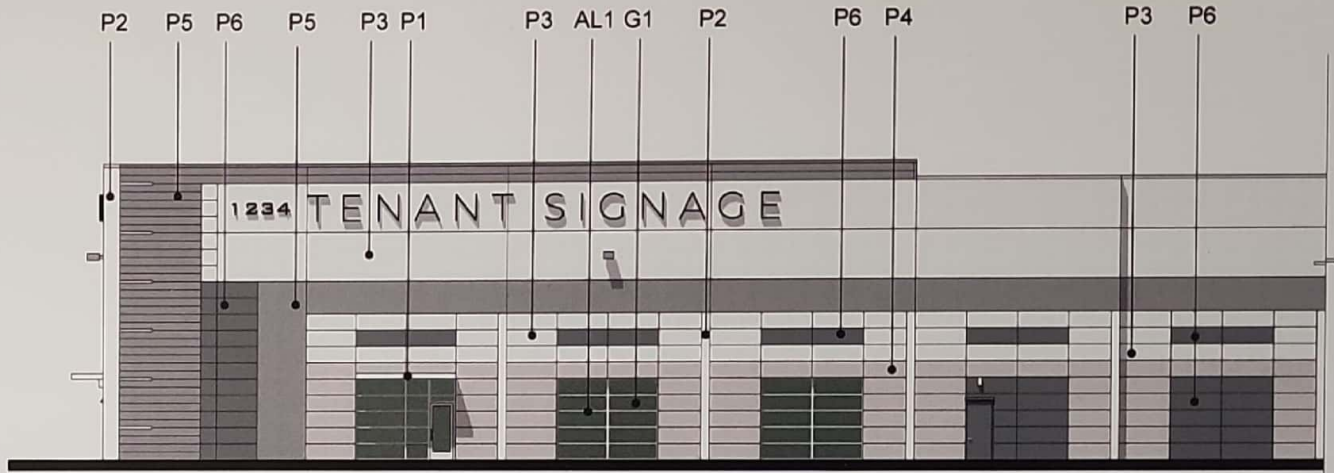
COLOR & MATERIAL BOARD FOR:
**NORTHPOINT
 COMMERCE CENTER**

AT THUNDERBOLT WAY
 SANTA ROSA, CALIFORNIA

RAW Architecture
 Interiors
 City of Santa Rosa
 Planning & Economic
 Development Department
 Apr 5, 2023
 RECEIVED



PERSPECTIVE RENDERING



PARTIAL EAST ELEVATION

Sample	Color	Material	Finish	Notes
1	Light Green	GL1	Smooth	GL1
2	Light Grey	P1	Smooth	P1
3	Medium Grey	P2	Smooth	P2
4	Dark Grey	P3	Smooth	P3
5	Very Dark Grey	P4	Smooth	P4
6	Black	P5	Smooth	P5
7	Dark Grey	P6	Smooth	P6
8	Light Grey	AL1	Smooth	AL1

ATLANTICA® Glass + Colors Below if Insulating Glass Unit
 ATLANTICA® Glass + Colors Below if Insulating Glass Unit
 U-Value (typical) (W/m²K)
 Argon
 SIGC
 LSG
 1.20
 1.71
 1.75
 1.50
 1.60

GL1	P1	P2	P3	P4	P5	P6
Light Green	Light Grey	Medium Grey	Dark Grey	Very Dark Grey	Black	Dark Grey

AL1

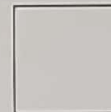
FINISH SCHEDULE



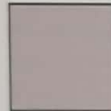
P1: PAINT 1
SHERWIN WILLIAMS
SW7757 HIGH REFLECTIVE
WHITE



P2: PAINT 2
SHERWIN WILLIAMS
SW7006 EXTRA WHITE



P3: PAINT 3
SHERWIN WILLIAMS
SW7646 FIRST STAR



P4: PAINT 4
SHERWIN WILLIAMS
SW7016 MINDFUL GRAY



P5: PAINT 5
SHERWIN WILLIAMS
SW7670 GRAY SHINGLE



P6: PAINT 6
SHERWIN WILLIAMS
SW6208 PEWTER GREEN



GL1: VITRO ARCHITECTURAL
GLASS "ATLANTICA"
EMERALD GREEN GLASS
IN THERMALLY BROKEN
CLEAR ANODIZED
ALUMINUM FRAMES