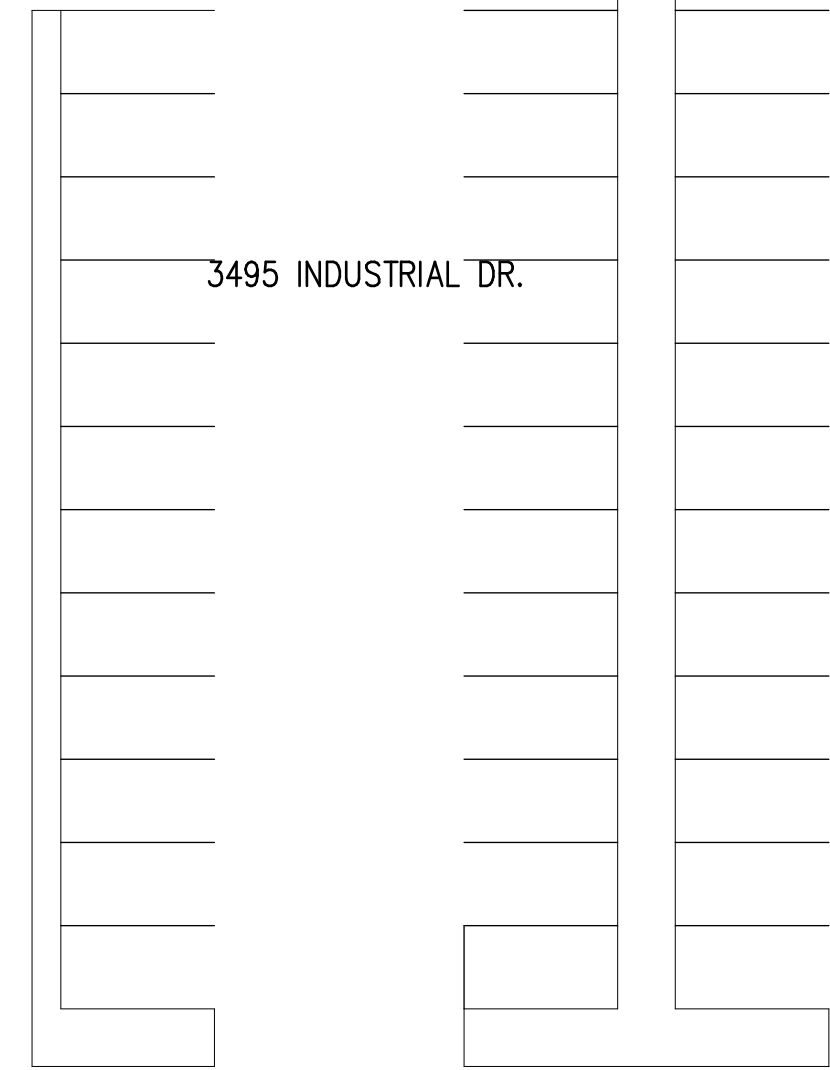
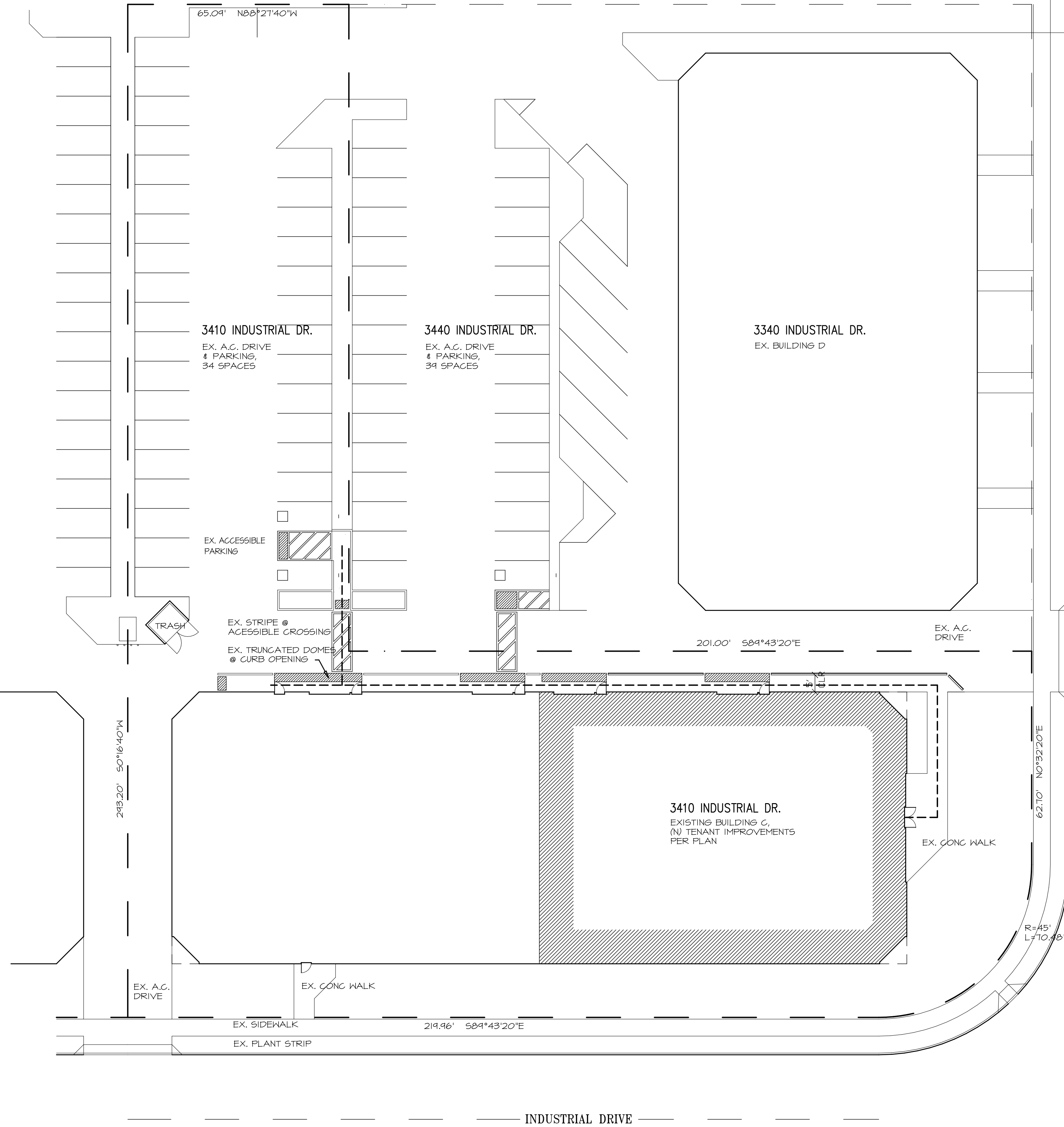


3495 INDUSTRIAL DR.



3495 INDUSTRIAL DR.

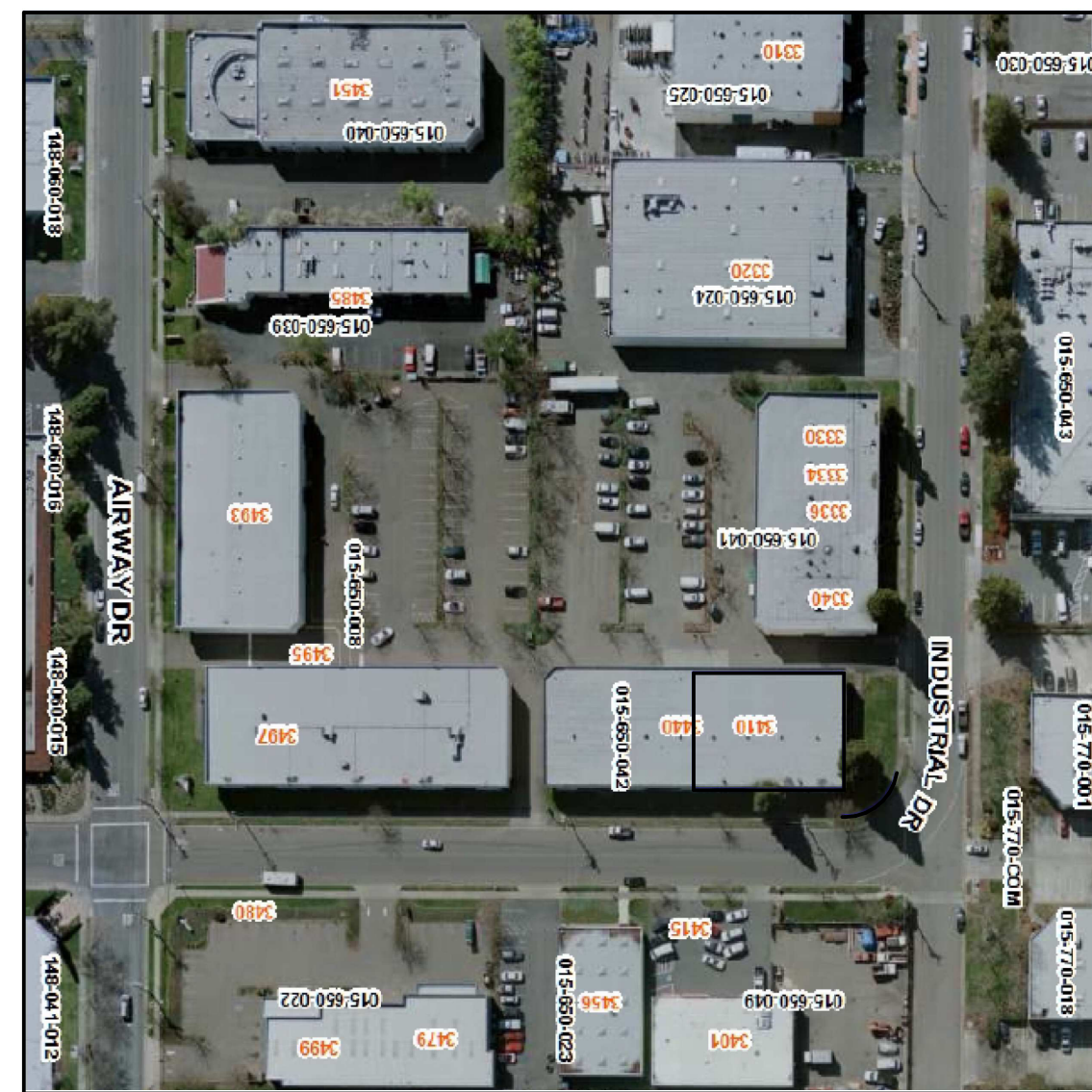


3410 INDUSTRIAL DR.  
EX. A.C. DRIVE  
& PARKING,  
34 SPACES

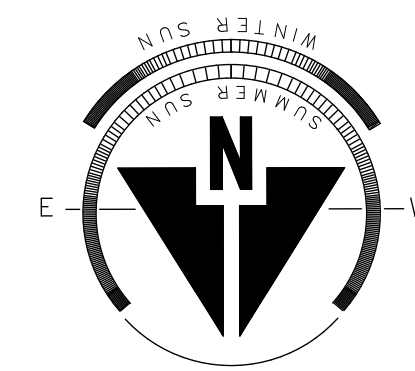
3440 INDUSTRIAL DR.  
EX. A.C. DRIVE  
& PARKING,  
34 SPACES

3340 INDUSTRIAL DR.  
EX. BUILDING D

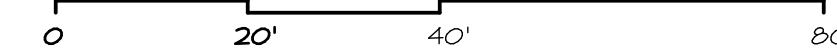
3410 INDUSTRIAL DR.  
EXISTING BUILDING C,  
(N) TENANT IMPROVEMENTS  
PER PLAN

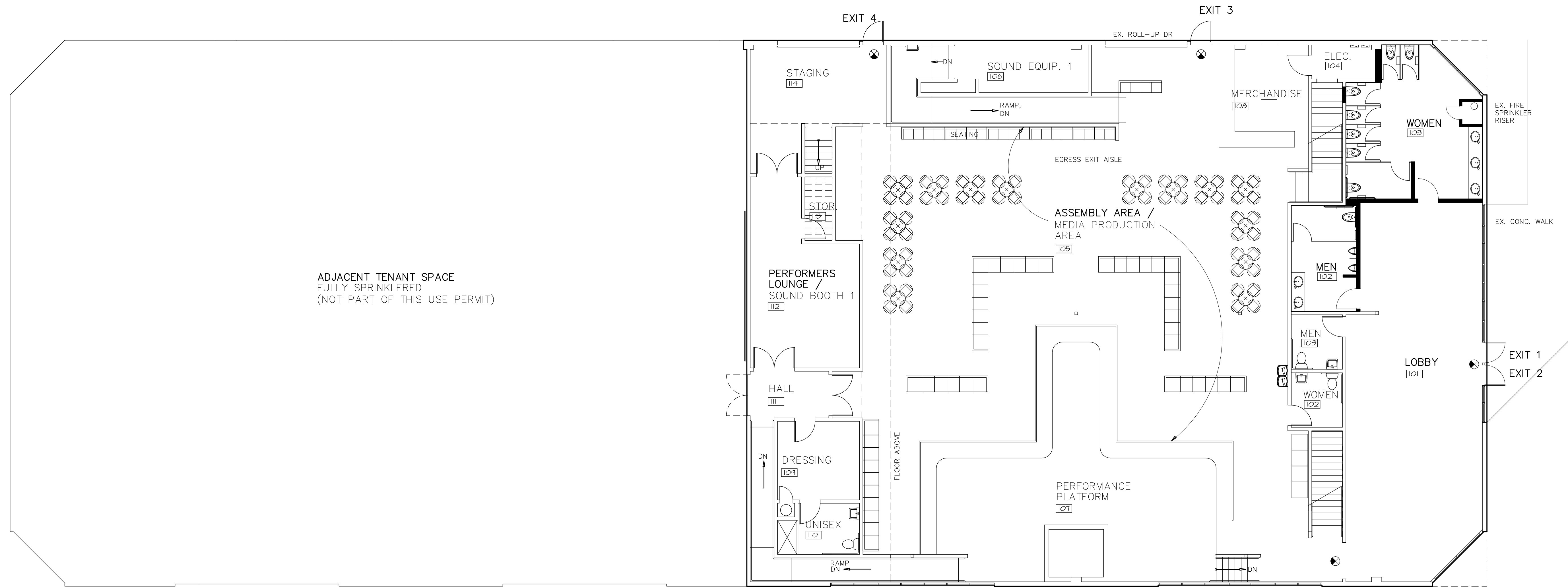


**LOCATION MAP**  
NO SCALE



**SITE PLAN**





ROCK STAR UNIVERSITY—OCCUPANCY & EXITING					
SPACE	USE	OCC DESIGNATION	AREA	OCC. LOAD	OCC.
101	LOBBY	ACCESSORY	950 SF	—	—
101.1	OFFICE	BUSINESS	275 SF	1:100	3
102	MENS RESTROOM	ACCESSORY	205 SF	—	—
103	WOMENS RESTROOM	ACCESSORY	340 SF	—	—
104	ELECTRICAL ROOM	ACCESSORY	150 SF	—	—
105	ASSEMBLY AREA	ASSEMBLY	3100 SF	1:5	620
106	SOUND EQUIP. 1	BUSINESS	410 SF	1:100	4
107	PERFORMANCE PLATFORM	PLATFORM	1210 SF	1:15	12
108	MERCHANDISE	BUSINESS	230 SF	1:100	23
109	DRESSING	ACCESSORY	150 SF	—	—
110	UNSEX RESTROOM	ACCESSORY	100 SF	—	—
111	HALL	ACCESSORY	275 SF	—	—
112	SOUND BOOTH 1	BUSINESS	390 SF	1:100	4
113	STORAGE	ACCESSORY	45 SF	—	—
114	STAGING	ACCESSORY	330 SF	—	—
201	STORAGE MEZZANINE	STORAGE	1300 SF	1:100	13
202	STORAGE	ACCESSORY	100 SF	—	—
203	ATTIC	ACCESSORY	500 SF	—	—
204	SOUND BOOTH 2	BUSINESS	170 SF	1:100	2
205	SOUND BOOTH 3	BUSINESS	110 SF	1:100	1
206	LANDING	ACCESSORY	40 SF	—	—
207	SOUND EQUIP. 2	BUSINESS	500 SF	1:100	5
208	SOUND BOOTH 4	BUSINESS	270 SF	1:100	3
209	ATTIC	ACCESSORY	75 SF	—	—

TOTAL OCCUPANTS **689**

PARKING		
USE	RATIO	SP. REQ.
LOBBY		2
OFFICE		1
ACCESSORY		
ACCESSORY		
BUSINESS	1 SP / 200 SF	16
SOUND BOOTH	1 SP / 200 SF	2
PLATFORM		5
ACCESSORY		
ACCESSORY		
ACCESSORY		
ACCESSORY		
SOUND BOOTH	1 SP / 200 SF	1
ACCESSORY		
ACCESSORY		
STORAGE	1 SP / 1000 SF	1
STORAGE	1 SP / 1000 SF	1
—		
SOUND BOOTH	1 SP / 200 SF	1
SOUND BOOTH	1 SP / 200 SF	1
ACCESSORY		
SOUND BOOTH	1 SP / 200 SF	2
SOUND BOOTH	1 SP / 200 SF	1
—		
—		

SP REQ **34**

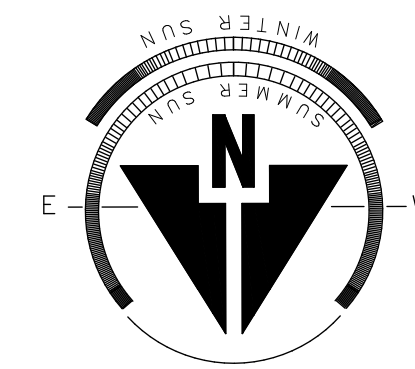
PROVIDED **34**

PARKING		
USE	RATIO	SP. REQ.
LOBBY		2
OFFICE		
ACCESSORY		
ACCESSORY		
ASSEMBLY	1 SP / 50 SF	62
SOUND BOOTH	1 SP / 200 SF	2
PLATFORM		5
RETAIL	1 SP / 250 SF	1
ACCESSORY		
ACCESSORY		
ACCESSORY		
ACCESSORY		
LOUNGE		
ACCESSORY		
STAGING		1
STORAGE	1 SP / 1000 SF	1
STORAGE	1 SP / 1000 SF	1
ACCESSORY		
NOT USED THIS VENUE		
NOT USED THIS VENUE		
NOT USED THIS VENUE		
NOT USED THIS VENUE		
NOT USED THIS VENUE		
NOT USED THIS VENUE		

SP REQ **73**

PROVIDED **73**

NOTE:  
AREAS DESIGNATED ACCESSORY & AREAS WITH NO DESIGNATED SP. REQ. ON PARKING TABULATION ARE NOT OCCUPIED CONCURRENTLY WITH PRIMARY USE  
ROCK STAR UNIVERSITY DAILY USE AND ASSEMBLY VENUE ARE NON CONCURRENT

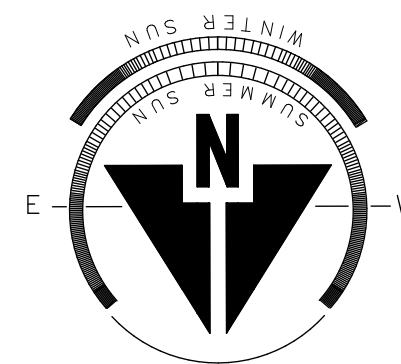
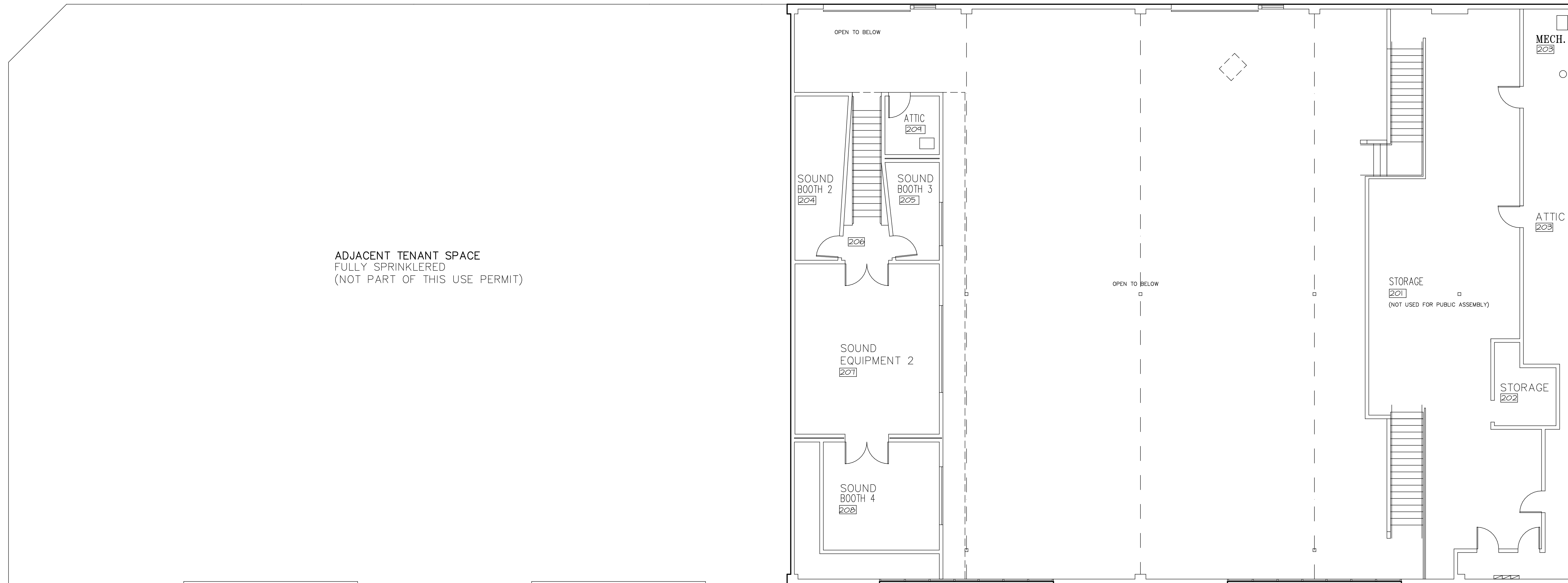


### FLOOR PLAN



NEW WALL  
EXISTING WALL

NOTE:  
PROVIDE EMERGENCY RESPONDER RADIO COVERAGE SYSTEM PER CFC SEC.510  
FIRE SPRINKLERS AND OCCUPANCY SEPERATIONS TO BE PROVIDED PER CBC.  
PROVIDE FIRE SPRINKLERS AT STORAGE BELOW PERFORMANCE PLATFORM 107 PER CBC.  
REQUIRED EGRESS PER CBC.



UPPER FLOOR & MEZZANINE



UPPER FLOOR & MEZZANINE PLAN  
SCALE: 1/8" = 1'-0"

PL01