

[REDACTED]

From: Cherie Gunnell [REDACTED]
Sent: Wednesday, January 11, 2023 8:29 PM
To: Lorna Deitz; Nelson Cabrera; Christine Canady; Colton; Stephanie Estopinal; Heidi Grey; Michael Kurty; Harold & Claudia Lilzarraga; Esau Lima; Deitz Lorna; Camille Olliffe; Erik Olson; Debra & Willie Paukowic; Sue Prachittpam; Cassidy Rasore; Liliana Santiago; Rick & Rhonda Sapinski; Gloria Torres; Travis Varpness
Cc: Ander, Emily; Alvarez, Eddie
Subject: [EXTERNAL] Earle Street & So A re 655 So A

Earle St (Sunnyside Addition) and So A Street

Happy New Year,

To our Neighbors, our City Councilman Eddie Alvarez and Park Planner Assistant Emily Ander.

Wishing you all a very Happy beginning to this new year of 2023.

Grateful that Covid is at bay, still being thoughtful of others as it is still lurking around.

As many of you probably know the big hope that we had for our little overgrown triangle at So A and Earle (655 So A) is **not** going to be included in the proposed Master Plan for South Davis Neighborhood Park according to the Board of Community Services (BOCS).

I know, we were hopeful, we had meetings and meetings, on both sides of the freeway, in person and by zoom, online, passed out and filled in the requested surveys, answered questions and discussed the most important issues. Especially the sound wall.

Thank you Emily for all your work and efforts to put forward our little triangle.

Here is a note that Emily sent just before Christmas:

"I spoke with Tim (Park maintenance) briefly on Wednesday and he raised a couple good questions that I wanted pose to you/the neighborhood. When it comes to sound barrier versus visibility, which is more important to the neighborhood? If the dying tree is removed, the other trees are limbed up and the shrub and herbaceous layer are removed, the freeway sound will be louder for the neighborhood.

I don't know how much louder but this is a change that would occur. Safety and visibility are of higher importance to the City when addressing a property over sound.

If the neighborhood cleaned up the lot (beyond removal of the dead tree and potentially removing limbs from large trees things that staff would need to do) via the Adopt-a-Green-Space Program, you might have a different approach to what vegetation is removed. The City Manager is encouraging the community to get involved with taking care of the City and one of the ways is expanding this program. The City updated the Adopt-a-Green-Space Program webpage: <https://www.srcity.org/3794/Adopt-A-Green-Space-Program>.

It may be easier to understand than what was there previously.

If I hear any more information from the Park Maintenance Team next week, I will let you know."

Lorna had a suggestion:

I don't know how much louder but this is a change that would occur. Safety and visibility are of higher importance to the City when addressing a property over sound.

If the neighborhood cleaned up the lot (beyond removal of the dead tree and potentially removing limbs from large trees things that staff would need to do) via the Adopt-a-Green-Space Program, you might have a different approach to what vegetation is removed. The City Manager is encouraging the community to get involved with taking care of the City and one of the ways is expanding this program. The City updated the Adopt-a-Green-Space Program webpage: <https://www.srcity.org/3794/Adopt-A-Green-Space-Program>.

It may be easier to understand than what was there previously.

If I hear any more information from the Park Maintenance Team next week, I will let you know.”,

Lorna had a suggestion:

"Since the city isn't willing to build a permanent physical barrier it would be my choice to do as they wish for visibility and fire safety's sake. Once the area is clear we can plant a native evergreen hedge along the" fence to block the sound."

Thank you Lorna for all you are doing to keep the street free of trash.

All this to say.....We would like to adopt this space as a neighborhood and would need your assistance.....are any of you interested in participating in the [Adopt A Green Space Program](#)? We could start with a one year commitment getting together every few months to keep the space cleared of unnecessary overgrowth, after the Park Maintenance Team has removed the heavy branches and dead trees.

We realize that this is much different than what we were hoping, but it is something.

Together we can make a difference in our neighborhood.

Please have a look at the above Adopt-A-Green-Space-Program web site and tell us what your thoughts are about participating.

We are looking to the City for help in supporting our small neighborhood.

Here's to a fresh start in 2023

Your neighbors,
Chérie & Peter
Lorna Deitz

P.S.

All similar views of the property.

I am glad to see that the redwood trees are holding on and growing. CalTran gave us several small Redwoods that we planted and babied the first two summers.



April 2013, 10 years ago

Cal Tran removed the chainlink



fence.

February 2009

September 2009

Our crew from the neighborhood, several have moved away. Lorna & my friend from the West Side. Peter, taking the photo, his son, my son and his fiancé.



[REDACTED]

From: Cherie Gunnell [REDACTED]
Sent: Friday, January 13, 2023 5:22 PM
To: Ander, Emily
Cc: Deitz Lorna; Alvarez, Eddie
Subject: [EXTERNAL] The corner of Earle Street and 655 So A Street

Hi Emily Ander & Eddie Alvarez,

I am not sure that this email was sent. If it was please excuse the repeat and Happy New Year!

I do have a question however.

I am not sure just how to go about informing each of the counsel members before the Feb 14 counsel meeting. What is the best way to give the Counsel members a copy of our request including photos, via email or a printed copy for each member? Are the the City Counsel members names and e-mails available?

Lorna I would like to put a packet together in whatever way you think would be the most appropriate and best received.

I have added a few photos from Lorna 2021 & 2022 at the bottom as well as a photo of a reasonable tree service that Tim from Park Maintenance might consider.

Neighbors Rich and Rhonda have have used this tree service several times to cut and trim their trees. Slaters Affordable Local Tree Care and highly recommend them.

Thank you for taking the time to view these photos of our family and neighbors helping clear out ivy and trash from the corners of Earle Street and 655 South A Streets.

We would also like to pursue the Adopt A Green Space Program.

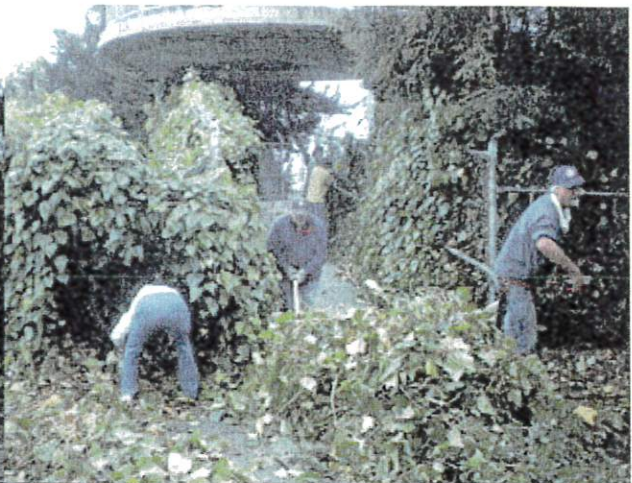
We are eager to have some assistance to help us in keeping this area cleared of heavy brush.

Cheers,

Chérie

These photos are from 2009-2022

In 2009, We appreciated the city dropping off a large bin to collect the rubbish and brush along with some tools to cut and hack with. Family and neighbors pitched in.







2013 The last coordinated neighborhood effort. Most have now moved out of the neighborhood.



2021 Not a helpful plan to have a port a potty it was a further trash magnet and was even occasionally tipped over. Lorna was picking up the trash left behind.



December 2022



2023



[REDACTED]

From: Lorna Deitz [REDACTED]
Sent: Thursday, January 19, 2023 12:45 PM
To: Parks Maintenance
Cc: Ander, Emily; Alvarez, Eddie; Cherie Gunnell
Subject: [EXTERNAL] City owned lot at the corner of Earle and South A Streets

To parks maintenance,

I'm a homeowner on Earle Street and recently learned the city owned lot is not being considered for inclusion into the South Davis Park masterplan. Now that we're going to have a break in the rains we need your assistance in removing the dead and dying trees as well as the underbrush there. The area is littered with trash, some of it hazardous, like human waste, needles, syringes, and motor oil. Its become a hiding place for the unhoused who have resorted to breaking off large branches to take cover from the storms. I also believe they have used their full body weight to topple smaller living trees in the last 10 days to build makeshift shelters.

So yesterday I went down and cut away the most flammable parts of the branches with dried leaves and placed them into my own green recycling bin. A month ago I filled mine and my neighbors to the brim with the same. Unfortunately, it's not just the homeless using the site as a dumping ground. Last month it was a huge pumpkin and now a Christmas tree. Dead animals like pet dogs and birds and still usable furniture like large sofas too. I hope others in our neighborhood will join me in the Adopt a Green Space program but until we can organize a group of volunteers we're begging for your help in keeping the area less of a safety issue and fire hazard as the dry season will be upon us again in a few short months.

I also noticed yesterday the chain link fence was cut in the same place that was reported by me and repaired by CalTrans last year. All this to say that we need a permanent block wall as it will continue to be either on the city's or CalTrans fix it lists in the future.

Thank you for all you have done and are doing to keep up our parks safe and clean.

Respectfully,
Lorna Deitz

Sent from my iPhone