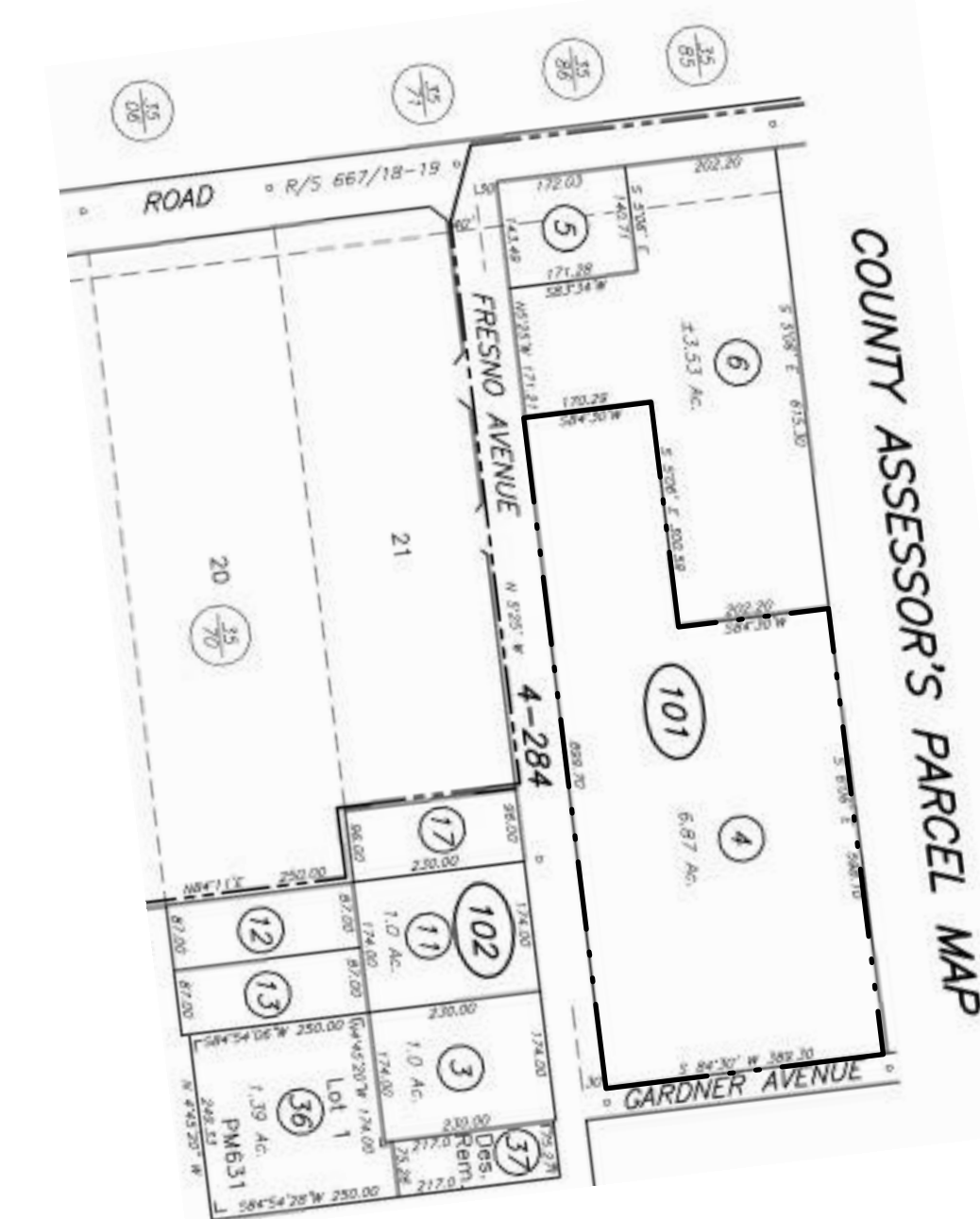
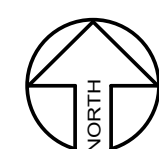
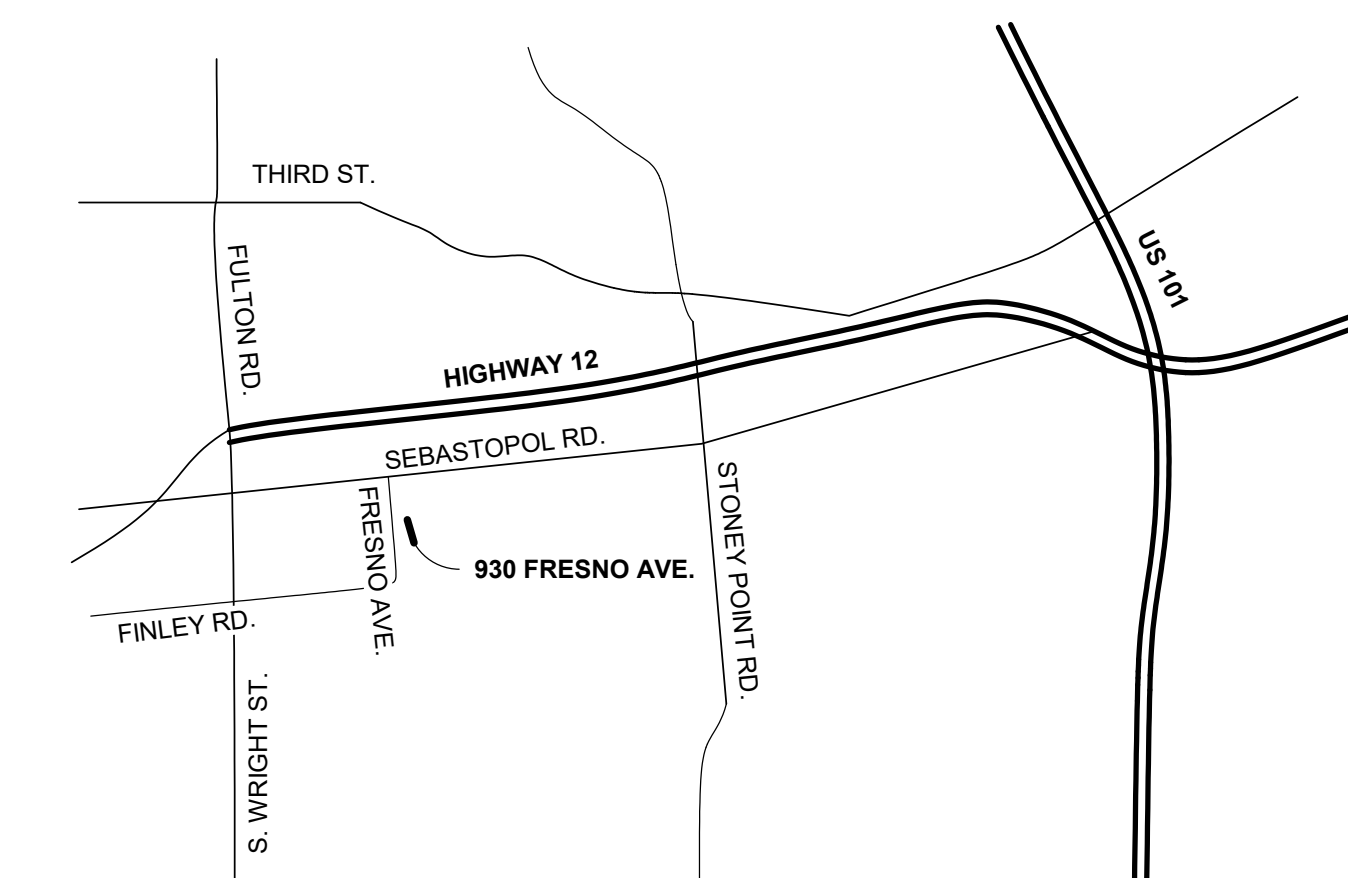
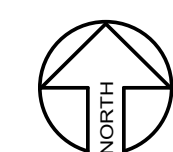




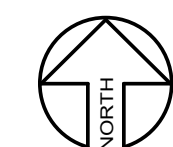
SITE ANALYSIS MAP
NOT TO SCALE



ASSESSOR'S PARCEL MAP
N.T.S.



VICINITY MAP
N.T.S.



CHERRY RANCH

SITE ANALYSIS PLAN

930 FRESNO AVE, SANTA ROSA, CALIFORNIA

AXIA
ARCHITECTS
JULY 9, 2021