

Regional Operations Update

Subregional Technical Advisory
Committee

February 13, 2025

Mike Prinz

Deputy Director

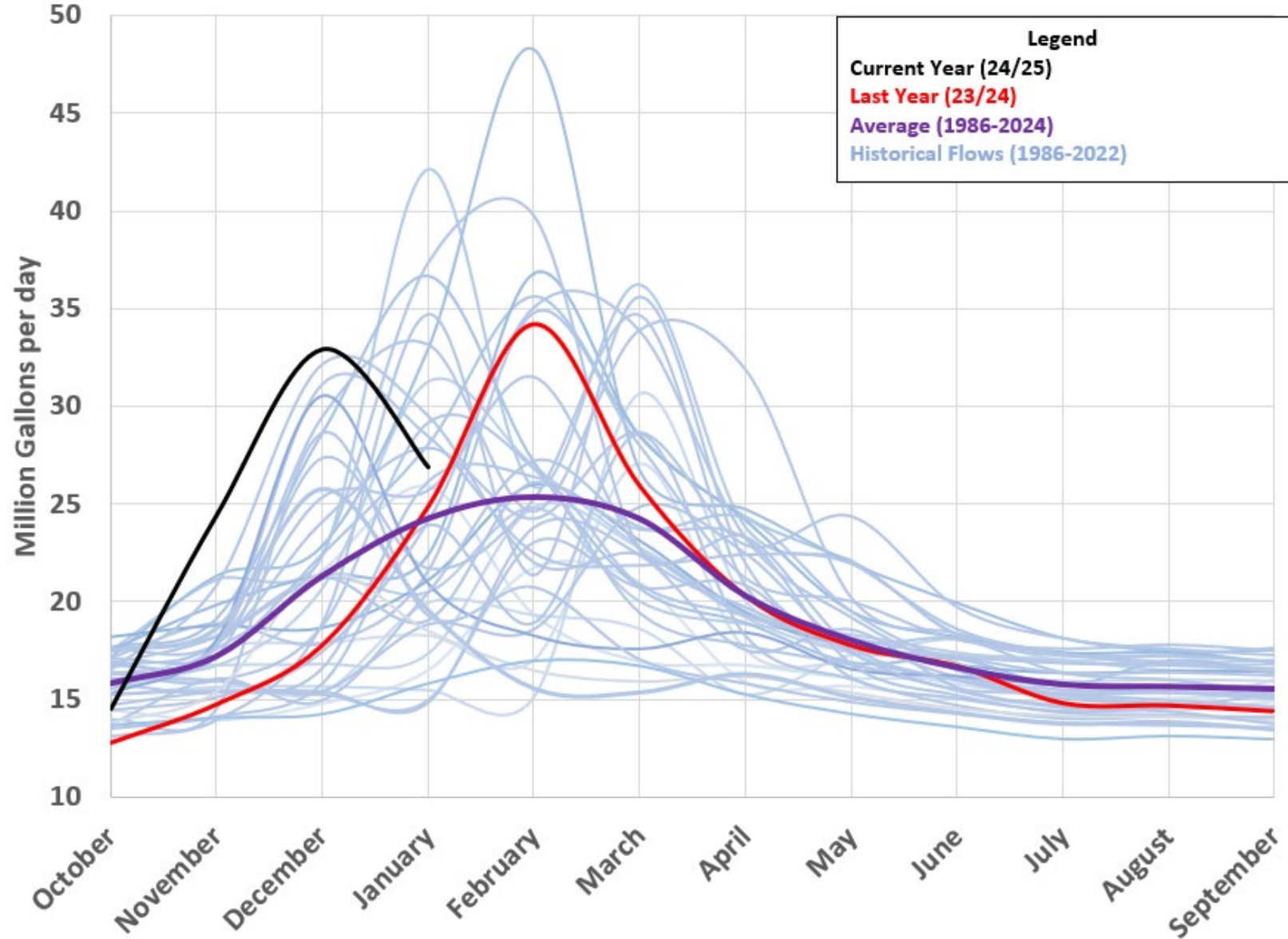
Regional Water Reuse Operations



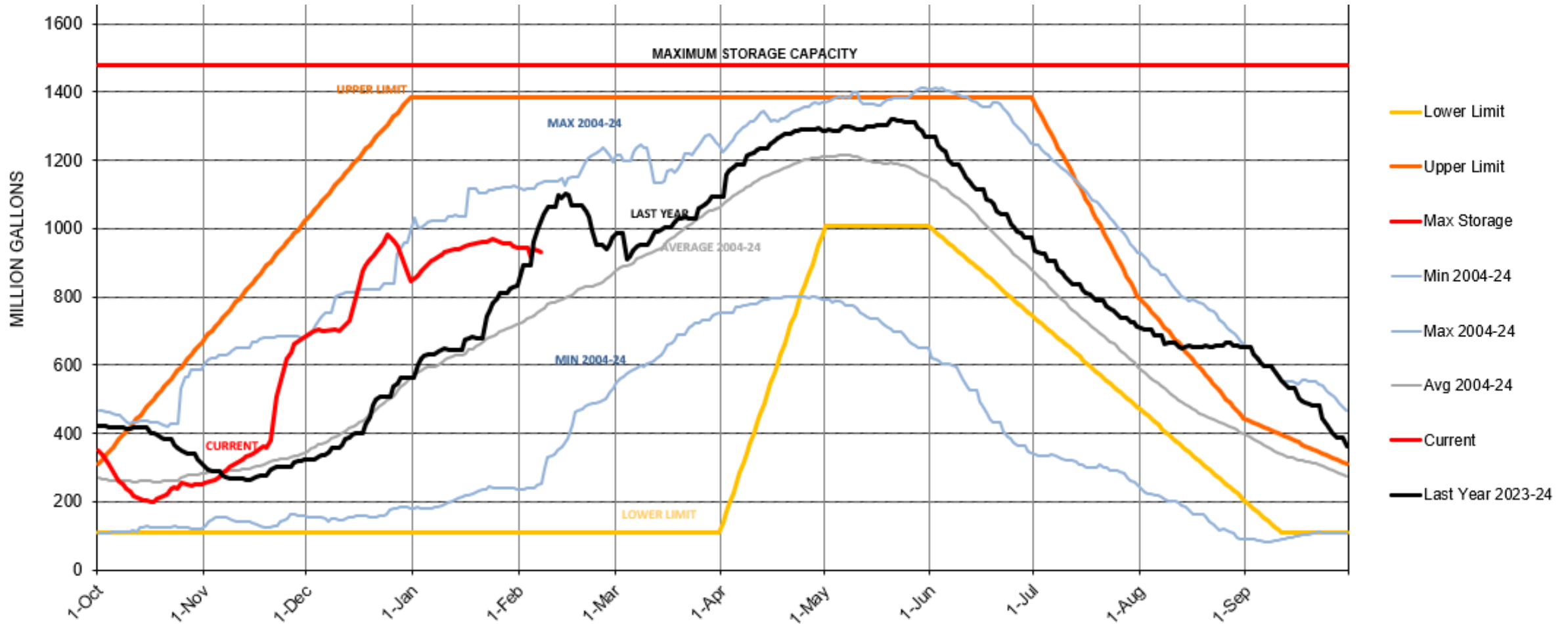
Topics for Today

- Recycled Water Production and Storage
- Discharge Status
- Pond C Conditions
- Disinfection System Upgrade Status

Recycled Water Production



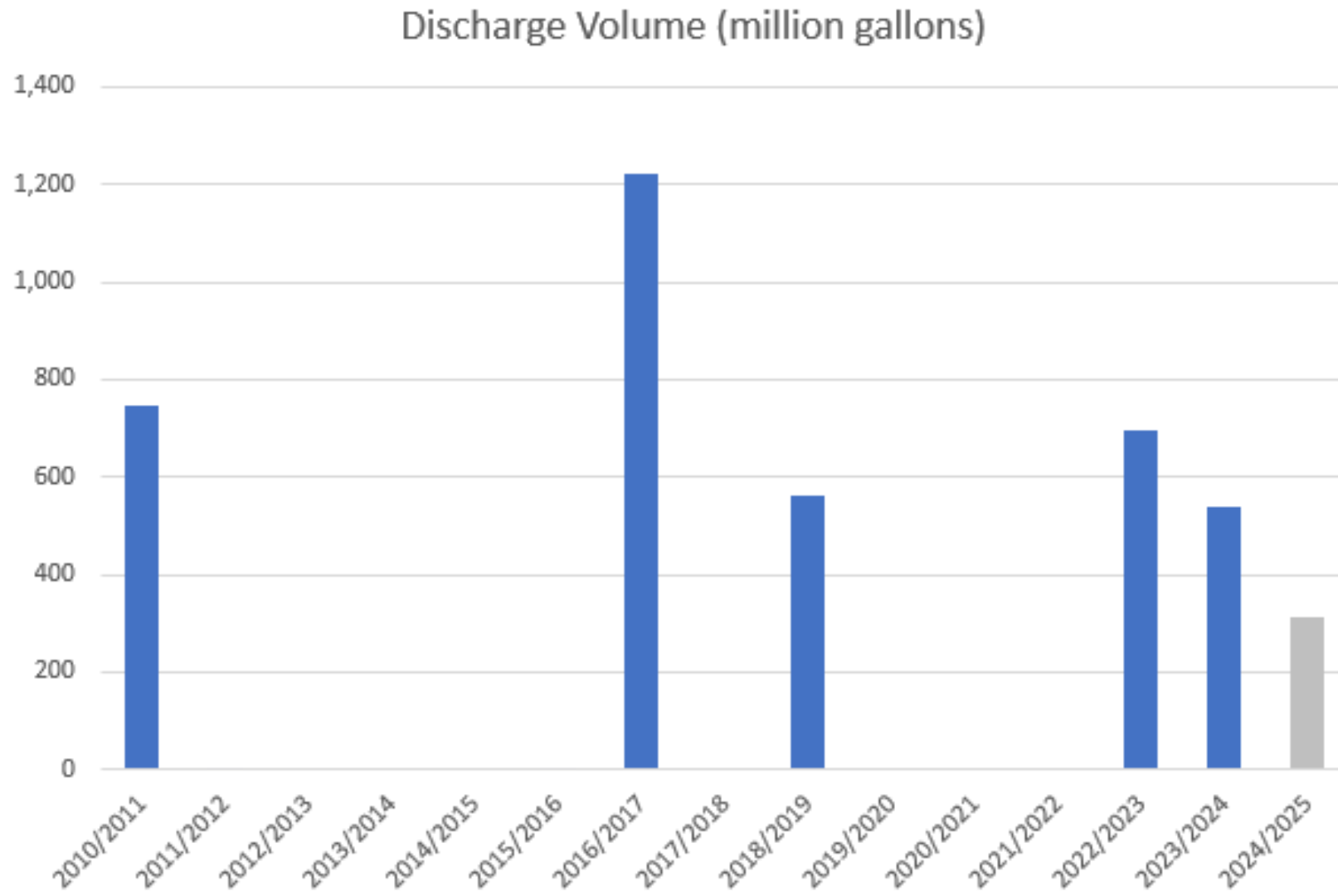
Current Recycled Water Storage



2024/2025 Discharge Status

- Previously discharged 312 MG in late December 2024
- February 1-7/2025 Discharge estimate - 250-300 MG
- Approximately 1,900 Phosphorus credits 'used' for 24/25 discharge – so far
- Approximately 15,400 Phosphorus credits remain

Recent Historical Discharge Trend



Pond C Conditions

- Four off spec events – October 16 – December 14
 - Atmospheric River Event –12/12-13
 - 90 MGD peak influent flow!
- Unavoidable contamination of Pond C
- Retreatment of Pond C water required
- Pond C still offline – 200 MG storage unavailable

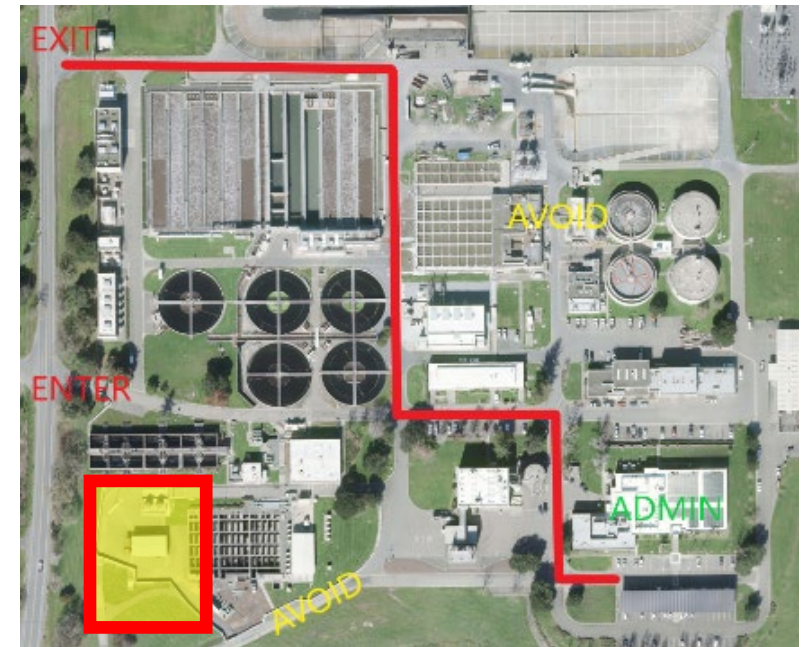






UV Construction Update

- Diversion Wet Well – punchlist
- Electrical Load Center Done
- Control room – in progress
- Influent Channel Backfilled/Done
- Treatment Channels – punchlist
- Diversion and Stormwater Pump Stations almost done
- Planning for Startup and Testing ongoing
- Factory Acceptance Test - Done



October 2022







January 30, 2025









By the Numbers (January 17, '25)

136 Concrete pours, including up to 23' high walls, 3' thick
7,039 CY of 7302 projected CY of concrete poured.
39,250 of 40,337 projected CY of excavation
(3,501 of 3,598 projected truckloads)
2.97 million lbs. of rebar placed (of projected 3.08 million lbs)
173,879 Labor hours
20-30(+) contractor staff on site on any given day
over \$100,000/business day burn rate for contractor only

Cost/Schedule Summary

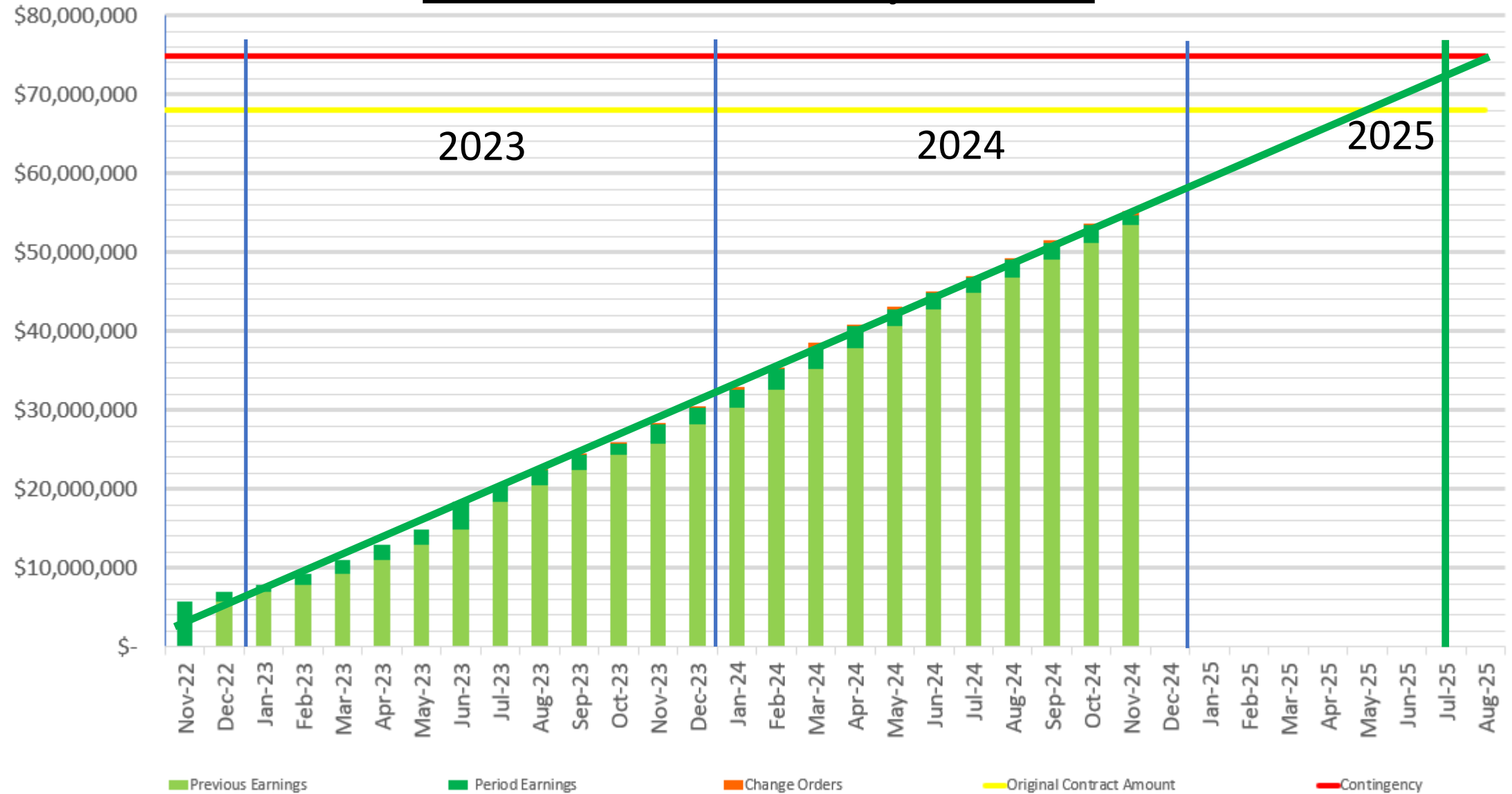
| | |
|---------------|------|
| Working Days | 1075 |
| Days Expended | 925 |

| | |
|-----------------------|-------|
| Days Remaining | 150 |
| Working Days Elapsed | 86.0% |
| Contract Paid to date | 76.9% |
| Contingency Used | 50.0% |

| | |
|-------------------|-----------|
| Notice To Proceed | 6/20/2022 |
| Final Completion | 5/30/2025 |

| |
|---------|
| 10/2025 |
|---------|

Construction Payments





Questions?