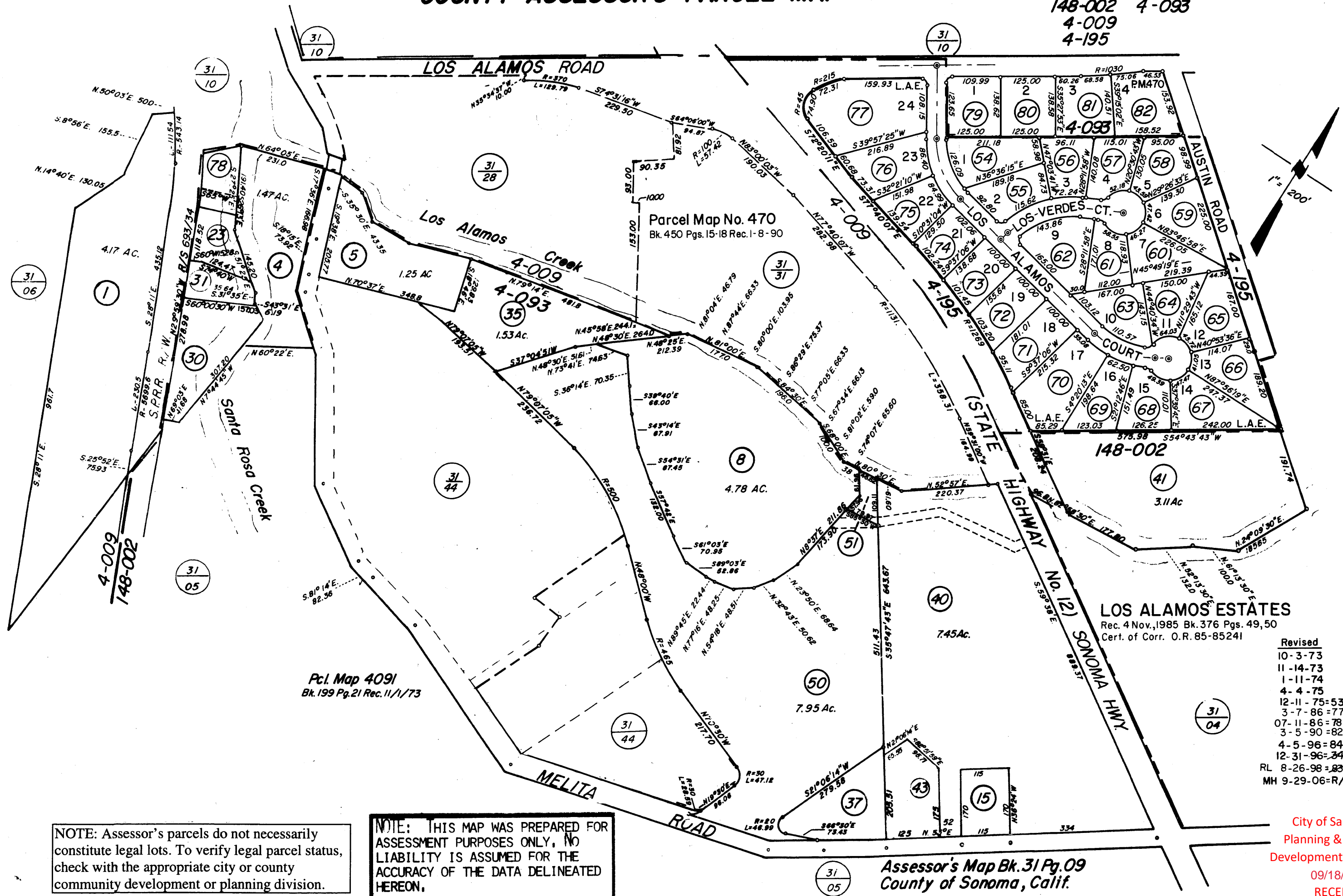


COUNTY ASSESSOR'S PARCEL MAP

TAX RATE AREA
148-002 4-093
4-009
4-195

31-09



NOTE: Assessor's parcels do not necessarily constitute legal lots. To verify legal parcel status, check with the appropriate city or county community development or planning division.

NOTE: THIS MAP WAS PREPARED FOR ASSESSMENT PURPOSES ONLY, NO LIABILITY IS ASSUMED FOR THE ACCURACY OF THE DATA DELINEATED HEREON.

Assessor's Map Bk. 31 Pg. 09
County of Sonoma, Calif.

LOS ALAMOS ESTATES
Rec. 4 Nov., 1985 Bk. 376 Pgs. 49, 50
Cert. of Corr. O.R. 85-85241

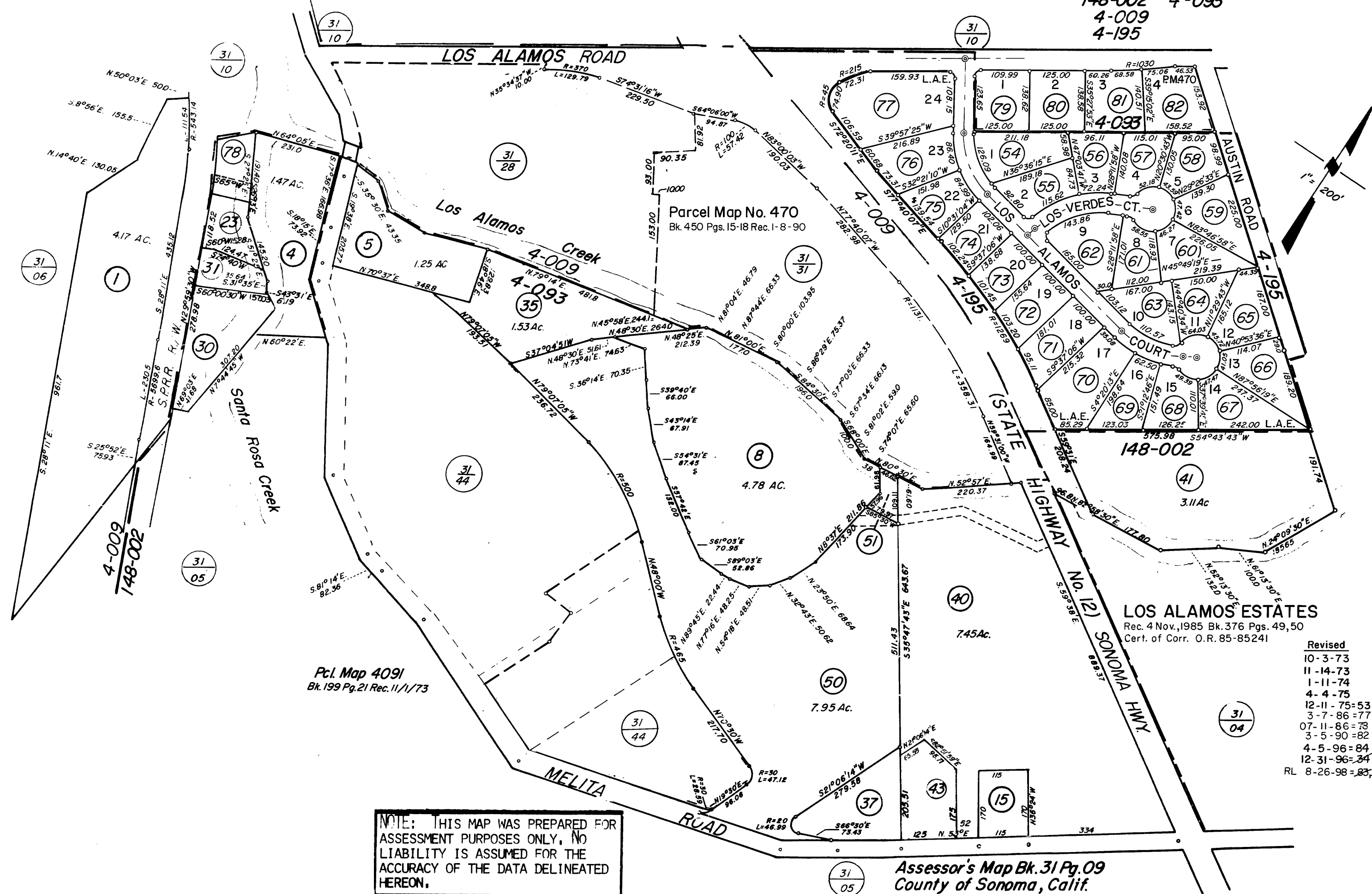
- Revised
- 10-3-73
 - 11-14-73
 - 1-11-74
 - 4-4-75
 - 12-11-75=53
 - 3-7-86=77
 - 07-11-86=78
 - 3-5-90=82 BF
 - 4-5-96=84 LF
 - 12-31-96=34 LF
 - RL 8-26-98=83, 87
 - MH 9-29-06=R/S

City of Santa Rosa
Planning & Economic
Development Department
09/18/2023
RECEIVED

COUNTY ASSESSOR'S PARCEL MAP

TAX RATE AREA
148-002 4-093
4-009
4-195

31-09



Parcel Map No. 470
Bk. 450 Pgs. 15-18 Rec. 1-8-90

Pcl. Map 4091
Bk. 199 Pg. 21 Rec. 11/1/73

LOS ALAMOS ESTATES
Rec. 4 Nov. 1985 Bk. 376 Pgs. 49, 50
Cert. of Corr. O.R. 85-85241

- Revised
- 10-3-73
 - 11-14-73
 - 1-11-74
 - 4-4-75
 - 12-11-75=53
 - 3-7-86=77
 - 07-11-86=78
 - 3-5-90=82 BF
 - 4-5-96=84 LF
 - 12-31-96=84 LF
 - RL 8-26-98=83, 87

NOTE: THIS MAP WAS PREPARED FOR ASSESSMENT PURPOSES ONLY. NO LIABILITY IS ASSUMED FOR THE ACCURACY OF THE DATA DELINEATED HEREON.

Assessor's Map Bk. 31 Pg. 09
County of Sonoma, Calif.