



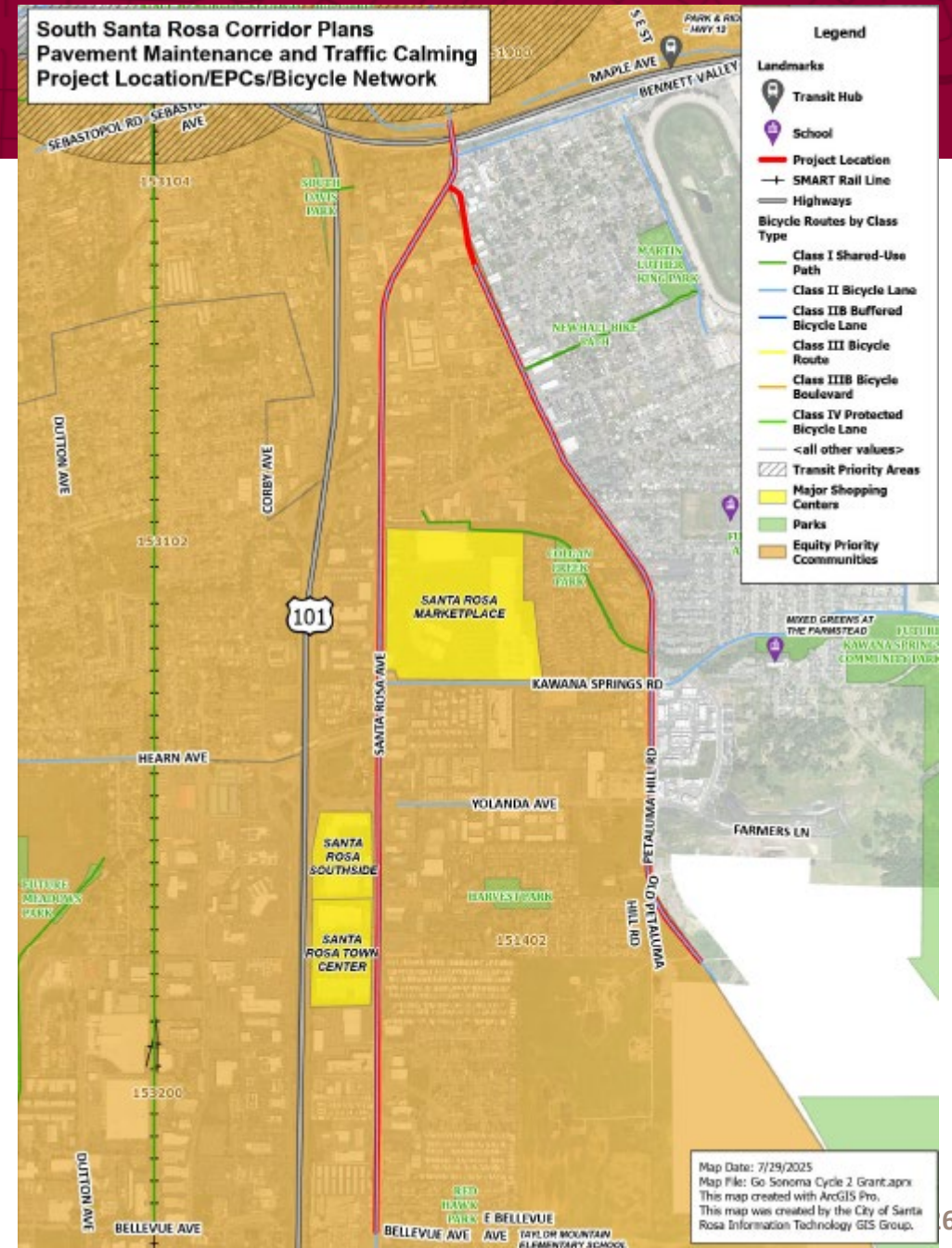
# E Santa Rosa Multimodal Corridor Improvements

Bicycle and Pedestrian Advisory Board

July 16, 2026

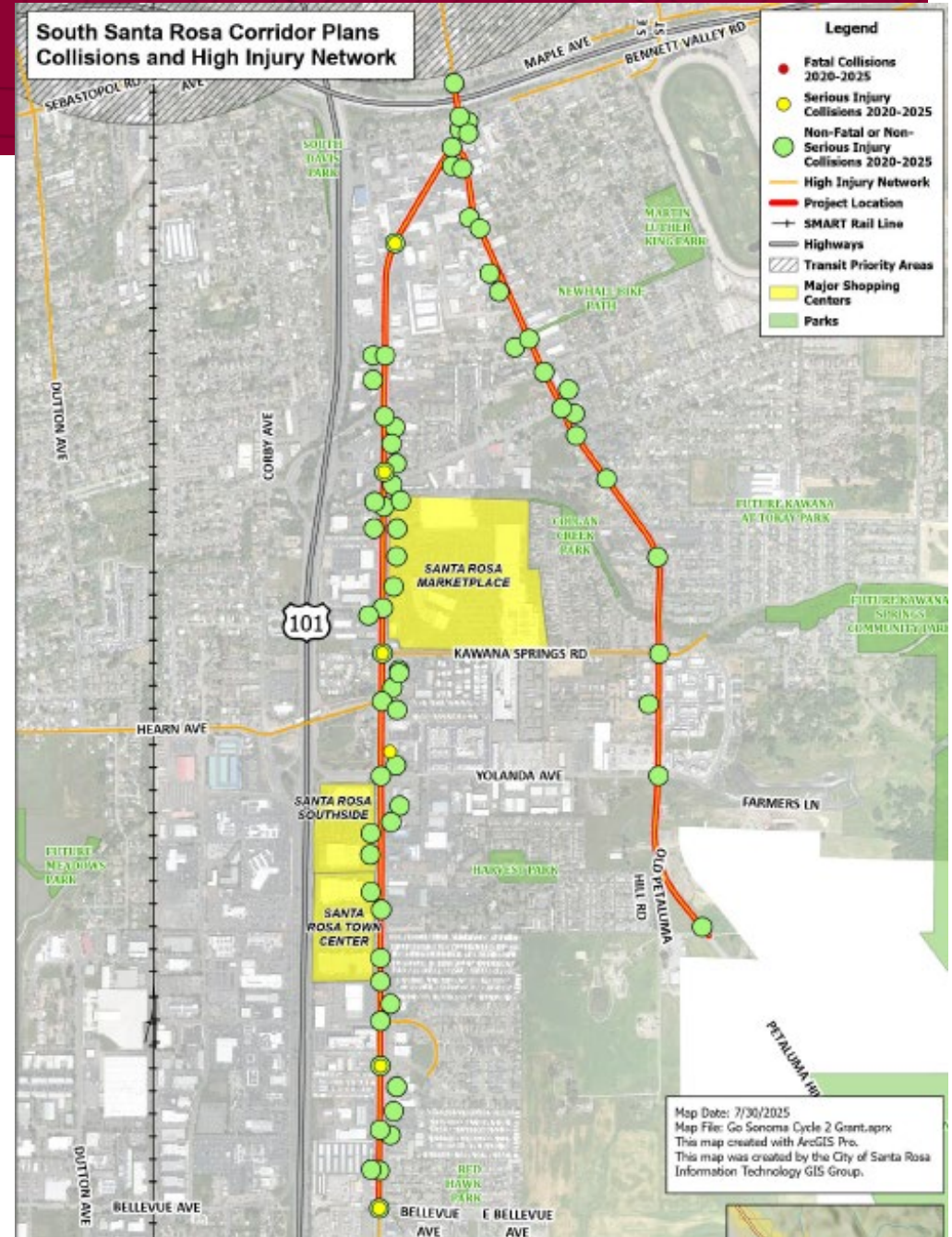
# Project Location

- Santa Rosa Avenue and Petaluma Hill Road from approximately Highway 12 to the southern city limits
- Location characteristics
  - Equity Priority Community
  - 27 CityBus stops
  - 15 Sonoma County Transit stops
  - Significant commercial and office spaces
  - Increasing residential density
- Project Described in the ATP and the South SR CBTP



# Collision History & Improvements

- Collisions happen for all modes along the entire corridor
  - No fatal injury
  - 6 serious injury
- Project characteristics
  - Protected bike lanes
  - New crossings with traffic calming
  - Intersection hardening and traffic calming
  - Bus boarding islands
  - Bus stop moving and/or additions
- Project will be complimented by CityBus and Sonoma County Transit joint wayfinding and amenities project



# Draft Complete Streets Checklist

- BPAB must review the Complete Streets Checklist prior to City submittal
- Project will include design and environmental clearance
- To streamline the process, the City will rely on past outreach from the ATP and the CBTP to complete the design and will only conduct additional outreach if deemed necessary during the design process