



CITY OF SANTA ROSA FREMONT PARK

4.17.2024 CULTURAL HERITAGE BOARD PRESENTATION





MS
LA



The background of the slide features a light green, stylized illustration of a park or urban development. It includes several rectangular buildings of varying sizes, some with flat roofs and others with gabled roofs. There are numerous trees of different shapes and sizes, some with dense foliage and others with bare branches. In the center, there is a paved area with small figures of people walking, a bicycle, and a dog. To the right, there are some circular structures that could be playground equipment or seating. The overall style is clean and modern, with a focus on green spaces and community areas.

AGENDA

1. HISTORIC RESOURCE STUDY OVERVIEW
2. SUMMARY OF PREVIOUS OUTREACH AND DESIGN
3. OPPORTUNITIES AND MASTER PLAN PRIORITIES



HISTORIC RESOURCE STUDY OVERVIEW



OVERVIEW

860 Fifth Street, 1.7 acre city park

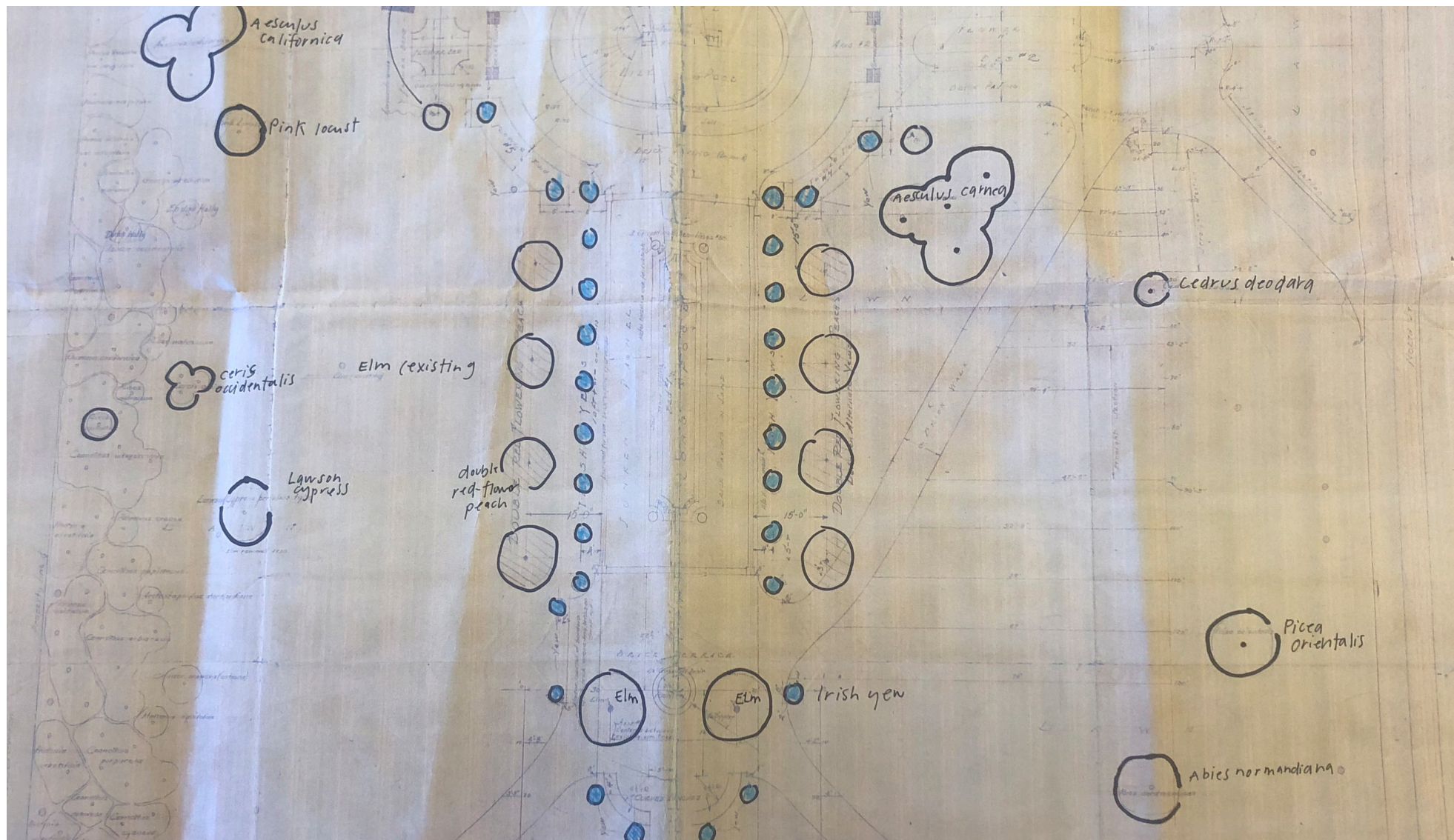
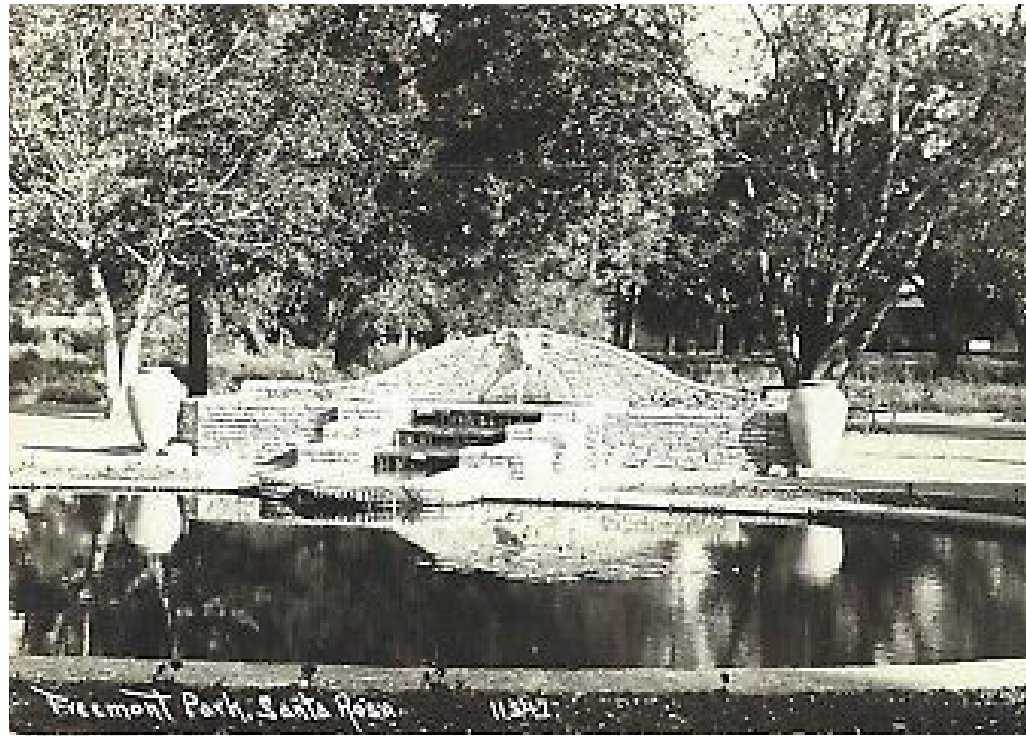
Historic Resource Study conducted by MIG for Santa Rosa Recreation and Parks Department

Evaluates:

- Park's historical significance
- Eligibility for listing in California Register of Historical Resources
- Eligibility for listing in National Register of Historic places

Recommends:

- Future Park Treatment
- Design Planning Opportunities



METHODOLOGY

Evaluation through:

- Research
- California and National Register Criteria

Review of Records Included:

- Historic Newspaper Articles
- Historic Photographs
- Original Plot Plans
- Cultural Heritage Surveys
- City Report
- Arborist Report
- Aerial Photographs
- Materials from Santa Rosa Historical Society Newspaper



Santa Rosa - - Prosperous City of Beauty! . . . Municipal Parks Among Attractions



HISTORIC STATUS

Fremont Park has not undergone prior evaluation for historic significance in the National Register of Historic Places or the California Register of Historical Resources.

HISTORIC CONTEXTS

Santa Rosa Parks and Open Spaces:

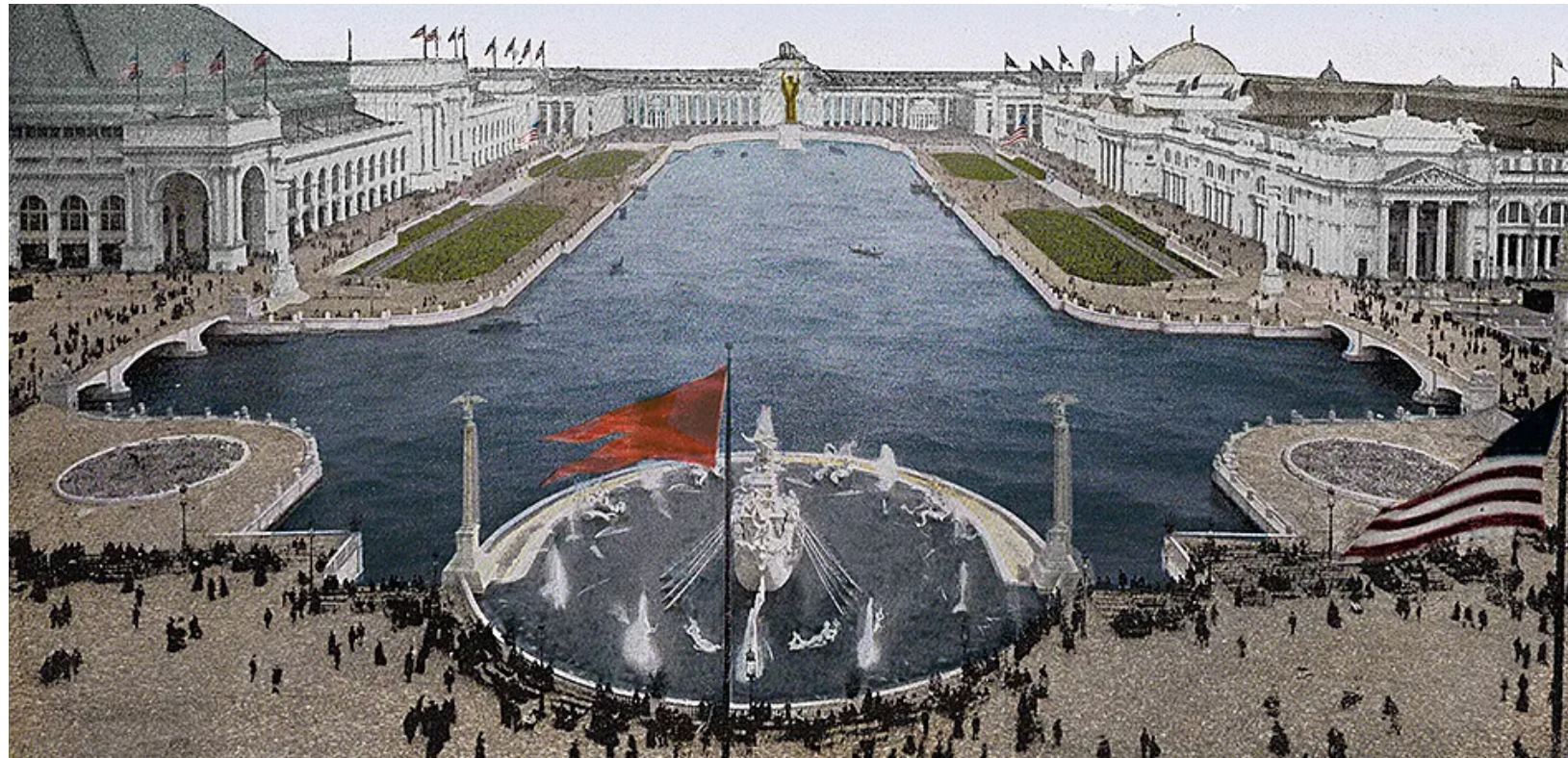
Growth Factors:

- Agricultural Economy
- Railroad Connections
- Post WWII Urban Redevelopment
- Desire for Green Space

Interwar Period:

- City's Commitment to Parks and Recreation

Other historic parks from this era include: Doyle Park, Juilliard Park



WORLD COLUMBIAN EXPOSITION IN 1893, INSPIRATION FOR CITY BEAUTIFUL MOVEMENT



SAN FRANCISCO'S CIVIC CENTER, INSPIRED BY BEAUX ARTS DESIGN

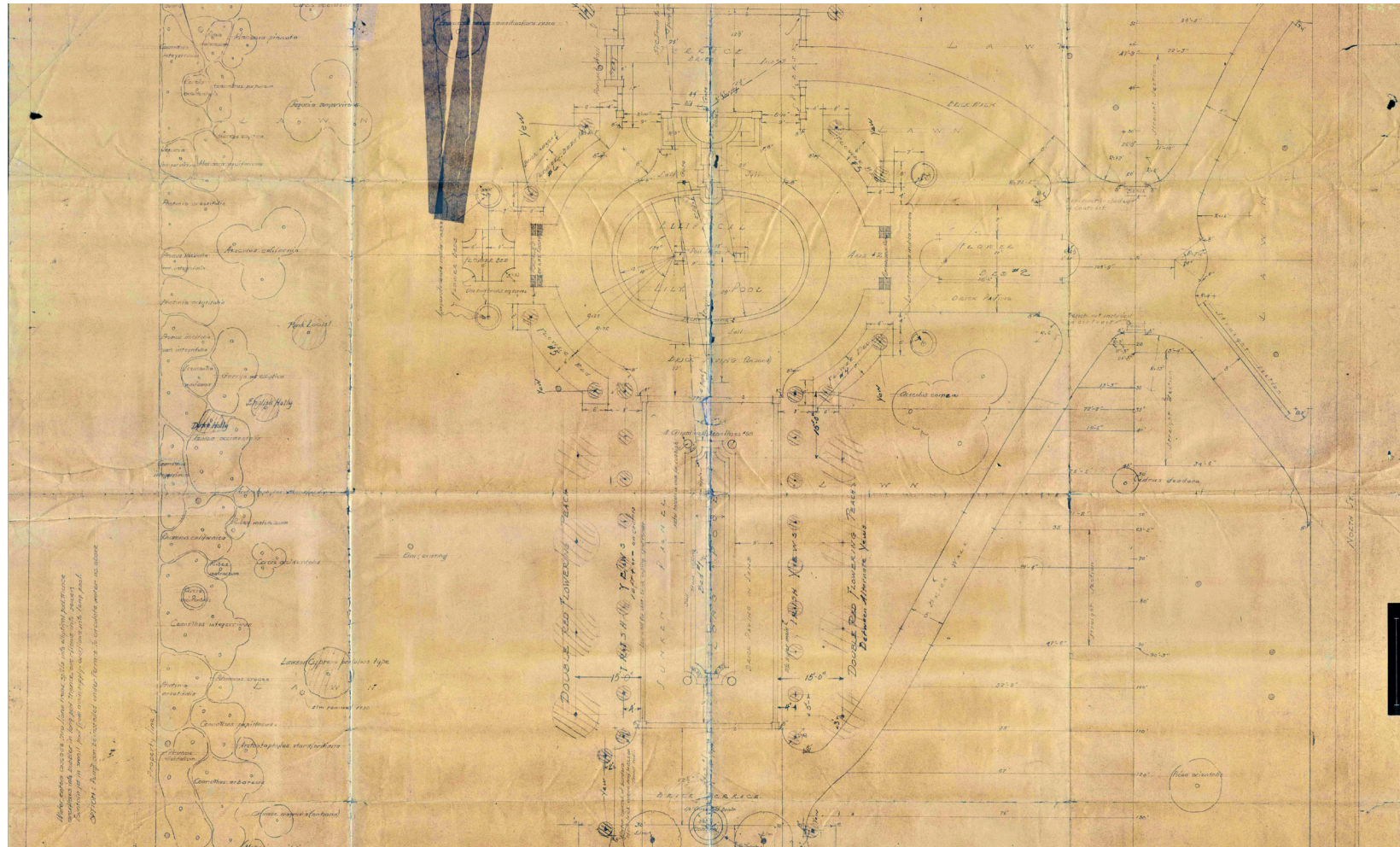
CONTEMPORANEOUS TRENDS IN LANDSCAPE ARCHITECTURE

City Beautiful Movement:

- Late 19th - Early 20th Century
- Urban Planning as a tool to address congestion, pollution, and transportation
- Emphasized harmonious design of green space and urban architecture
- Promoted health, pride, and engagement

Beaux-Arts Design:

- From Ecole Des Beaux-Arts, Paris
- Categorized by:
 - Rational Order
 - Axial Symmetry
 - Grand Arrivals
- San Francisco's Civic Center
 - Symbol of strength
 - Featured planting beds, fountains, and manicured trees



FREMONT PARK DEVELOPMENT

Characterized by:

- Formal Axes
- Ornate Water Features
- Vegetation Palette
- Beaux-Arts Principles

Design Elements:

- Much of original plan was retained
- Some altered during construction

HOWARD GILKEY (1929)

Legacy:

- Development of public spaces in Santa Rosa

Expertise:

- Graduate of UC Berkeley
- Luther Burbank
- Oakland Urban Planning

Design Philosophy:

- Classical and Local
- Aesthetically Pleasing and Functional





EXISTING CONDITIONS

Fremont Park's current condition reflects both its historical significance and the challenges of maintaining a century-old public space that retains many of its original features.

CRITERION A/1

EVENTS

Fremont Park plays a role in the development of Santa Rosa’s downtown district during a period of civic growth in the early 20th century

CRITERION B/2

PERSONS

Fremont Park does not significantly represent Howard Gilkey’s life work.

CRITERION C/3

DESIGN

Fremont Park embodies distinctive characteristics of the Beaux Arts style, possessing high artistic value

CRITERION D/4

INFORMATION POTENTIAL

Not evaluated for eligibility under this criterion



PERIOD OF SIGNIFICANCE

1929 - 1931

- Design to built completion of key features

Identity Shaped by:

-Emergence of downtown Santa Rosa

-Howard Gilkey's Designs

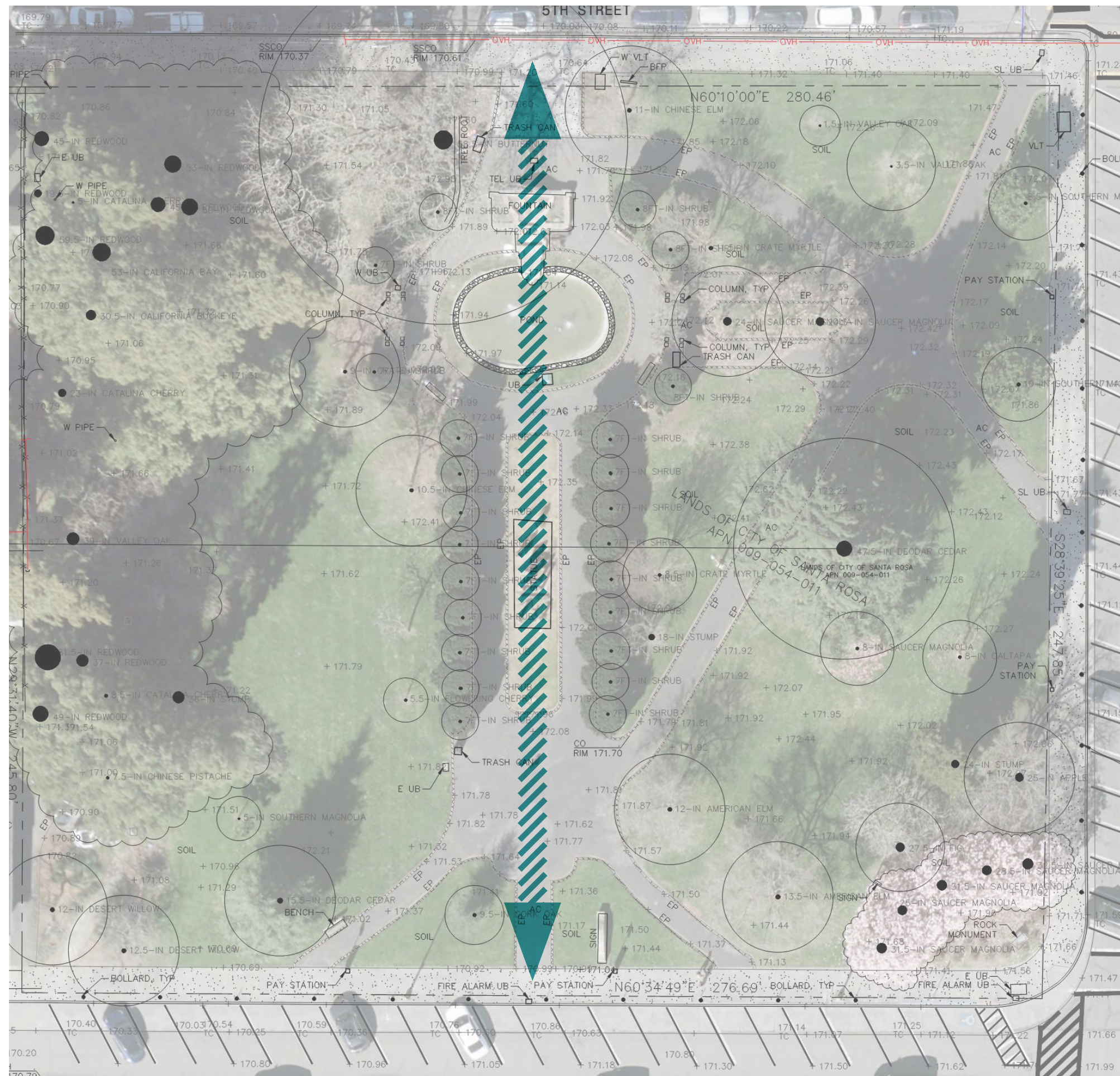


INTEGRITY ANALYSIS

Fremont Park demonstrates sufficient historic integrity for listing because:

- Overall layout and key features remain intact
- Historic integrity is preserved



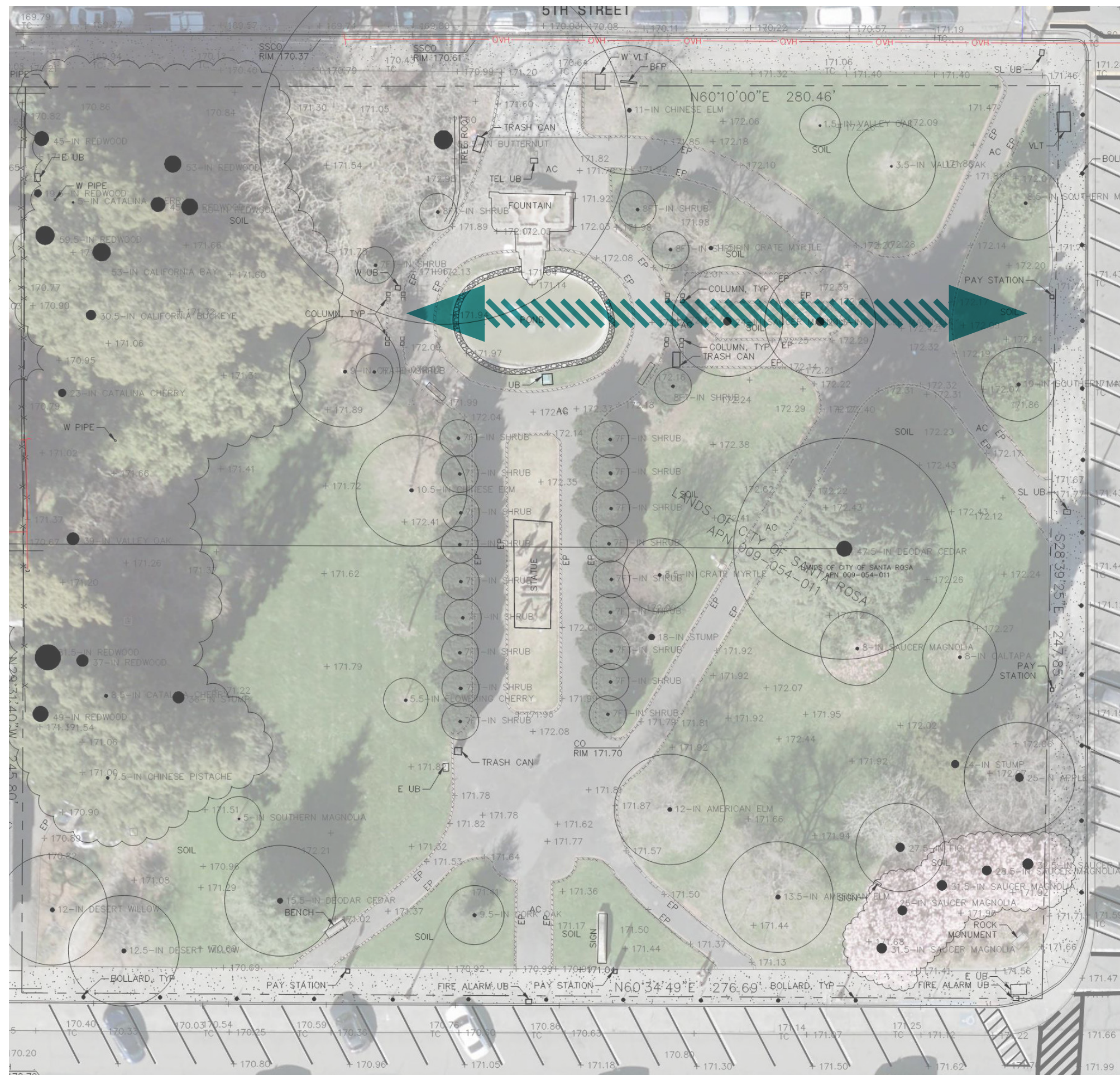


CHARACTER-DEFINING FEATURES

TO BE RETAINED OR REINTERPRETED IN THE REHABILITATION APPROACH

1. CENTRAL AXIS





CHARACTER-DEFINING FEATURES

TO BE RETAINED OR REINTERPRETED IN THE REHABILITATION APPROACH

1. CENTRAL AXIS
2. SECONDARY AXIS



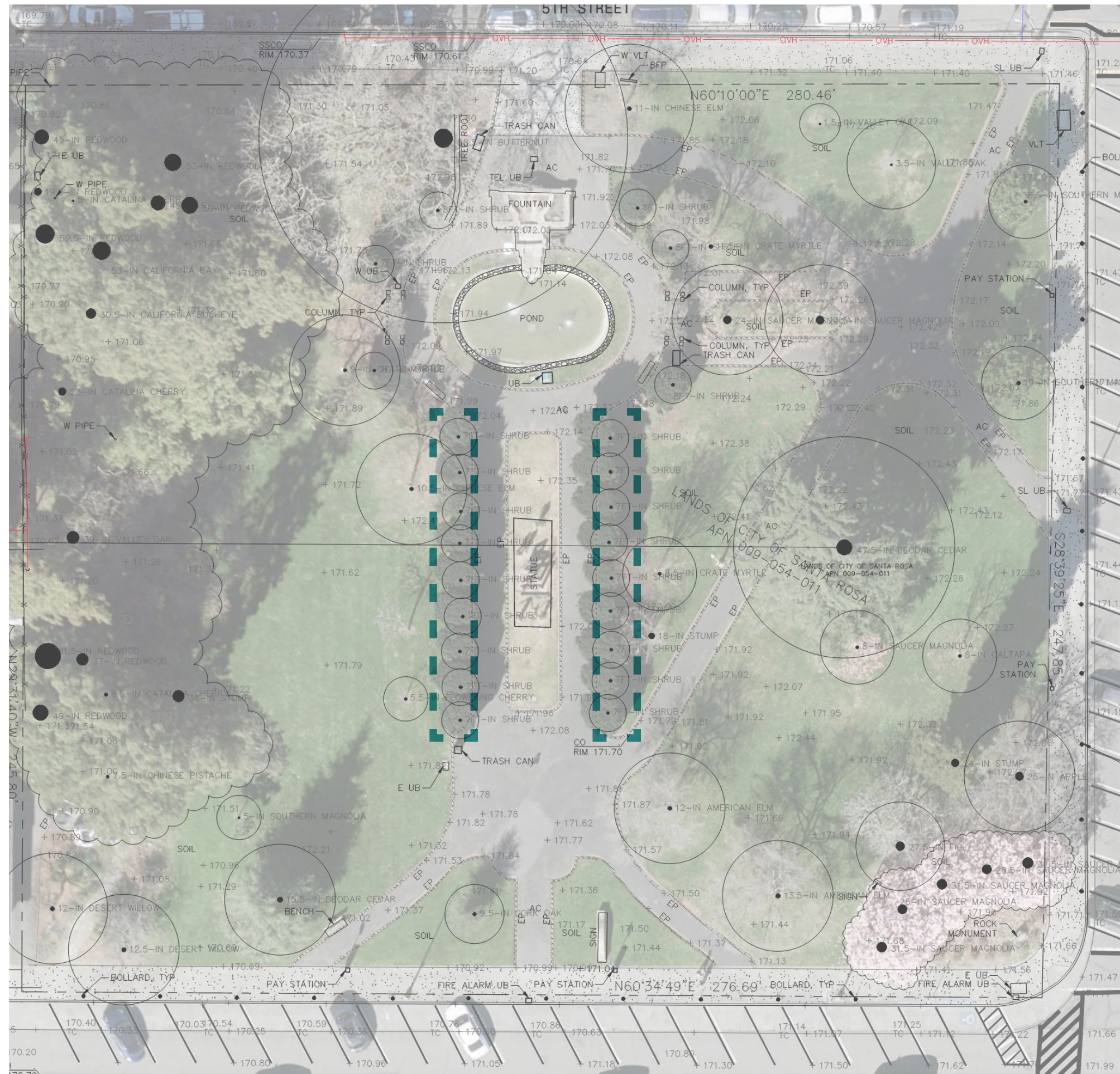
TO BE RETAINED OR
REINTERPRETED IN THE
REHABILITATION APPROACH

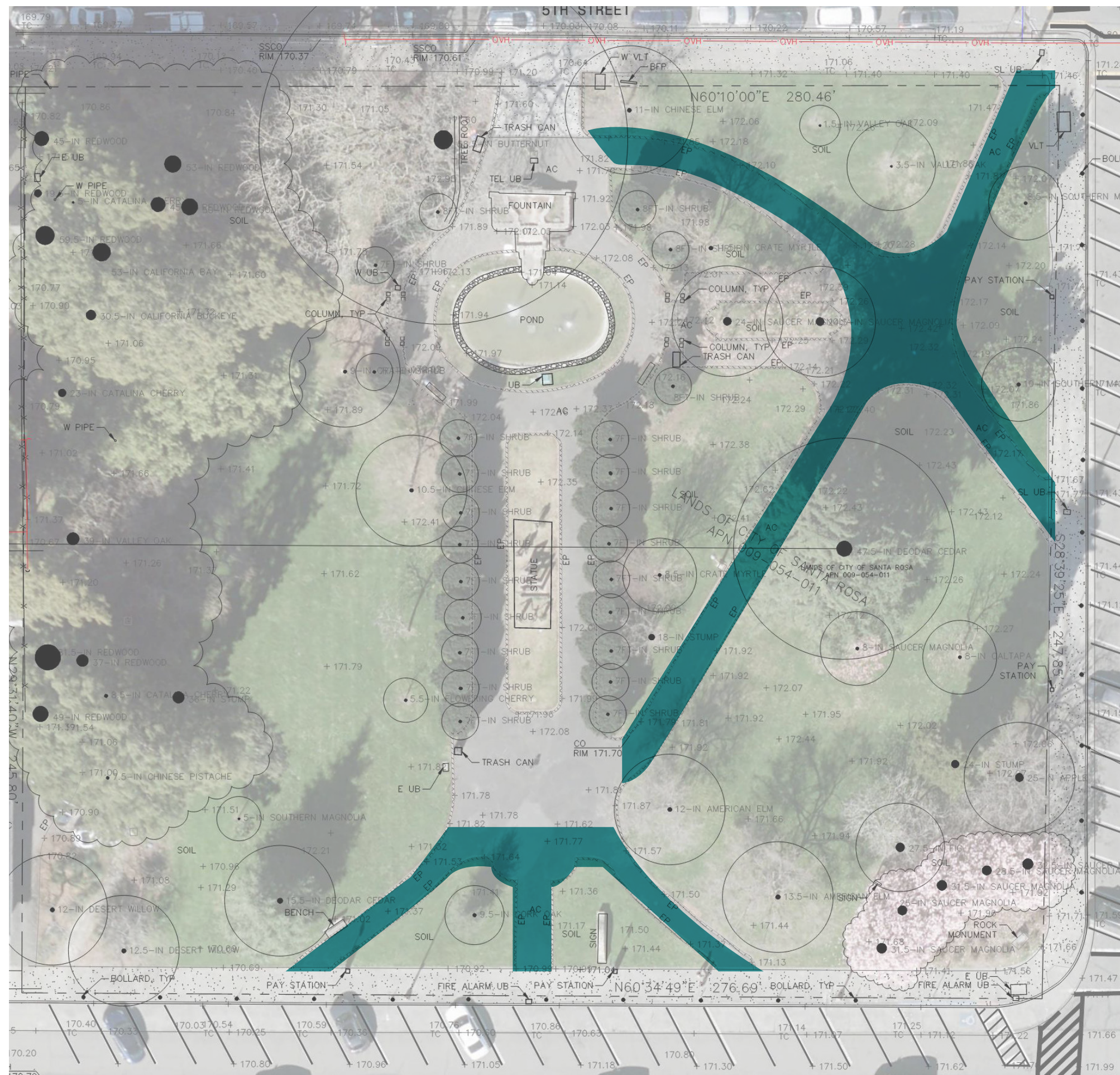
-



TO BE RETAINED OR
REINTERPRETED IN THE
REHABILITATION APPROACH

- 





CHARACTER-DEFINING FEATURES

TO BE RETAINED OR REINTERPRETED IN THE REHABILITATION APPROACH

1. CENTRAL AXIS
2. SECONDARY AXIS
3. LILY POOL AND FOUNTAIN
4. SYMMETRICAL PLANTINGS
5. TERTIARY WALKWAYS



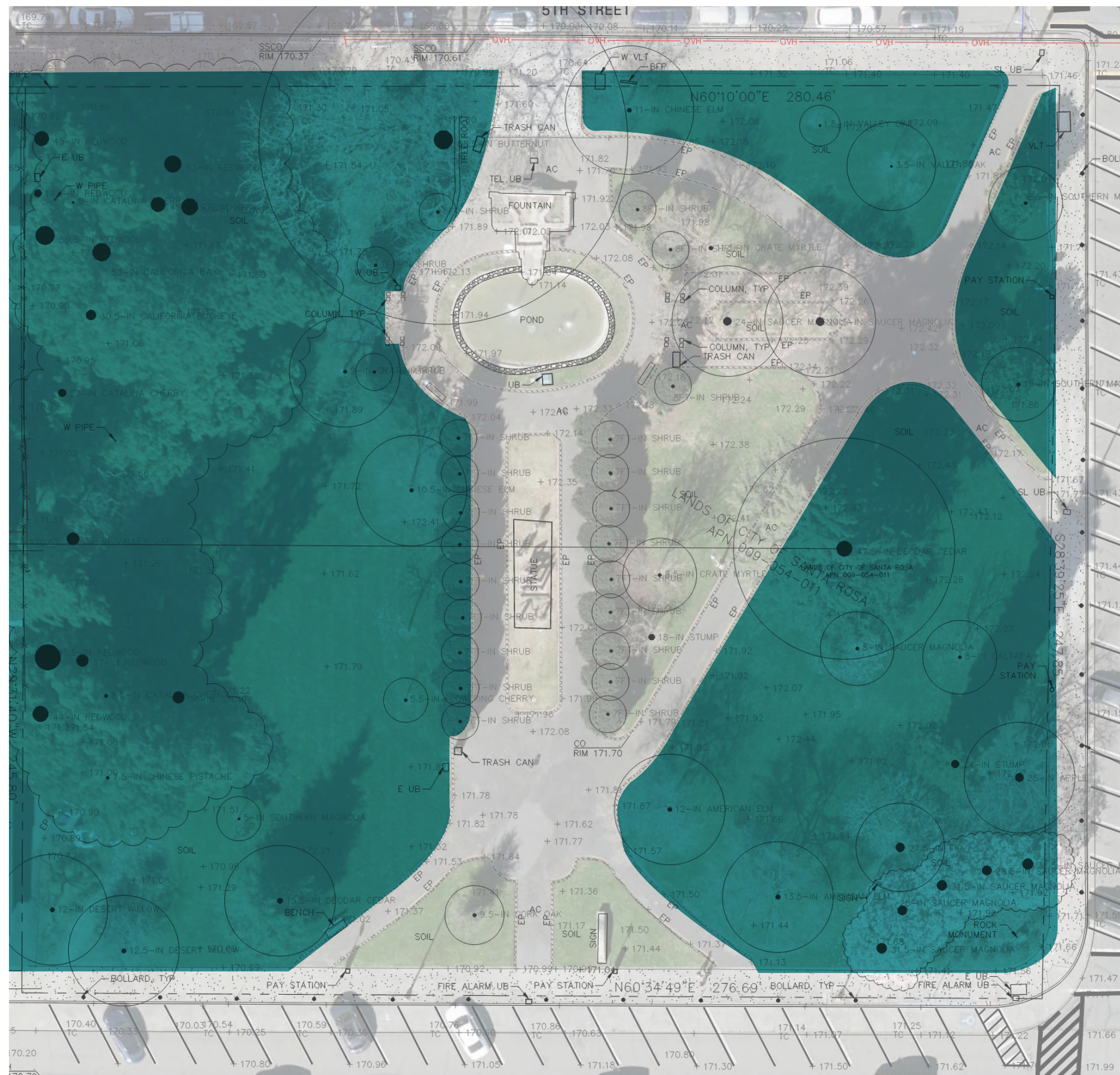


CHARACTER-DEFINING FEATURES

TO BE RETAINED OR REINTERPRETED IN THE REHABILITATION APPROACH

1. CENTRAL AXIS
2. SECONDARY AXIS
3. LILY POOL AND FOUNTAIN
4. SYMMETRICAL PLANTINGS
5. TERTIARY WALKWAYS
6. **BRICK EDGING**

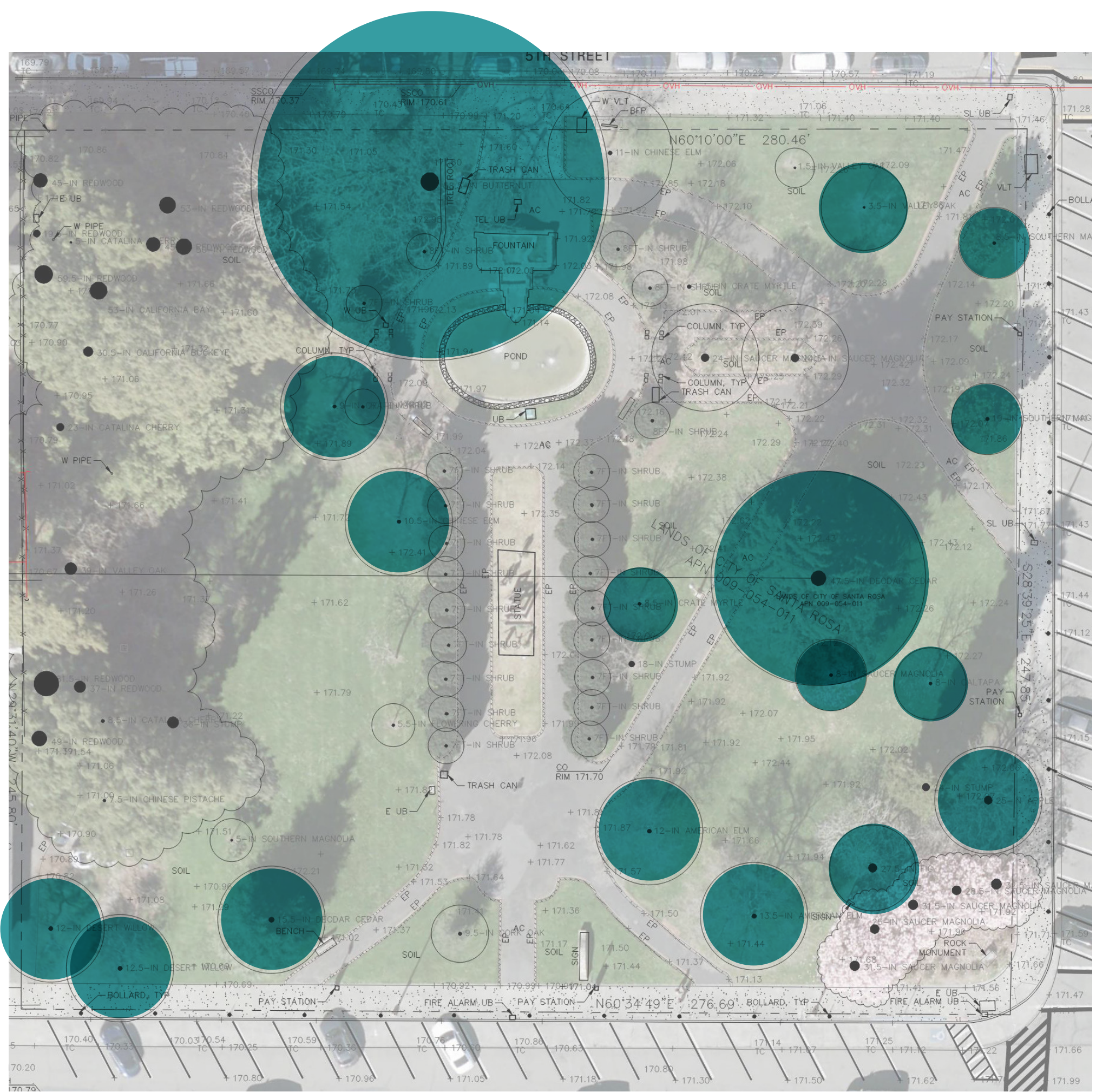




CHARACTER-DEFINING FEATURES

TO BE RETAINED OR REINTERPRETED IN THE REHABILITATION APPROACH

1. CENTRAL AXIS
2. SECONDARY AXIS
3. LILY POOL AND FOUNTAIN
4. SYMMETRICAL PLANTINGS
5. TERTIARY WALKWAYS
6. BRICK EDGING
7. OPEN LAWNS

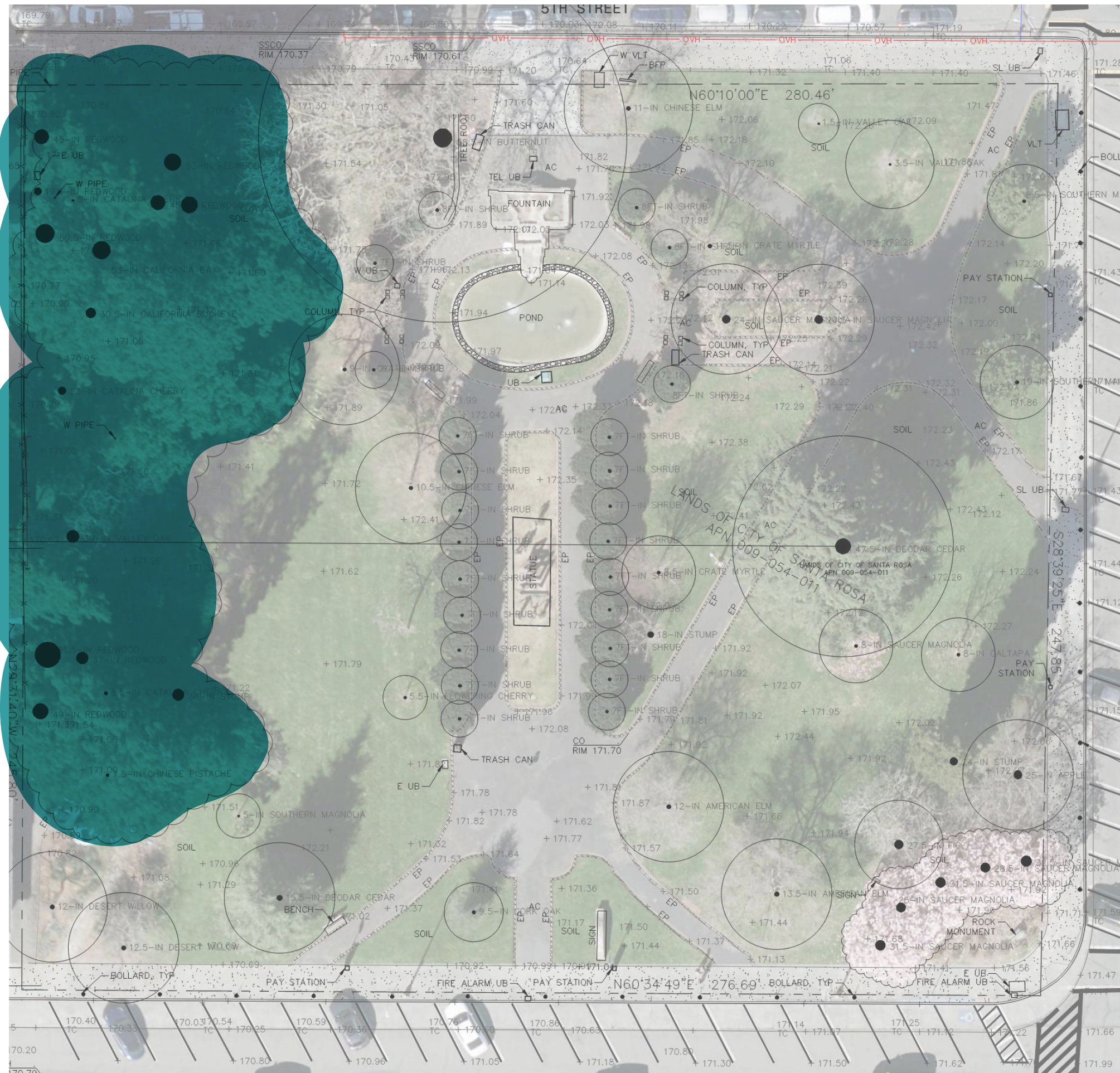


CHARACTER-DEFINING FEATURES

TO BE RETAINED OR REINTERPRETED IN THE REHABILITATION APPROACH

1. CENTRAL AXIS
2. SECONDARY AXIS
3. LILY POOL AND FOUNTAIN
4. SYMMETRICAL PLANTINGS
5. TERTIARY WALKWAYS
6. BRICK EDGING
7. OPEN LAWNS
- 8. SCATTERED SPECIMEN TREES**



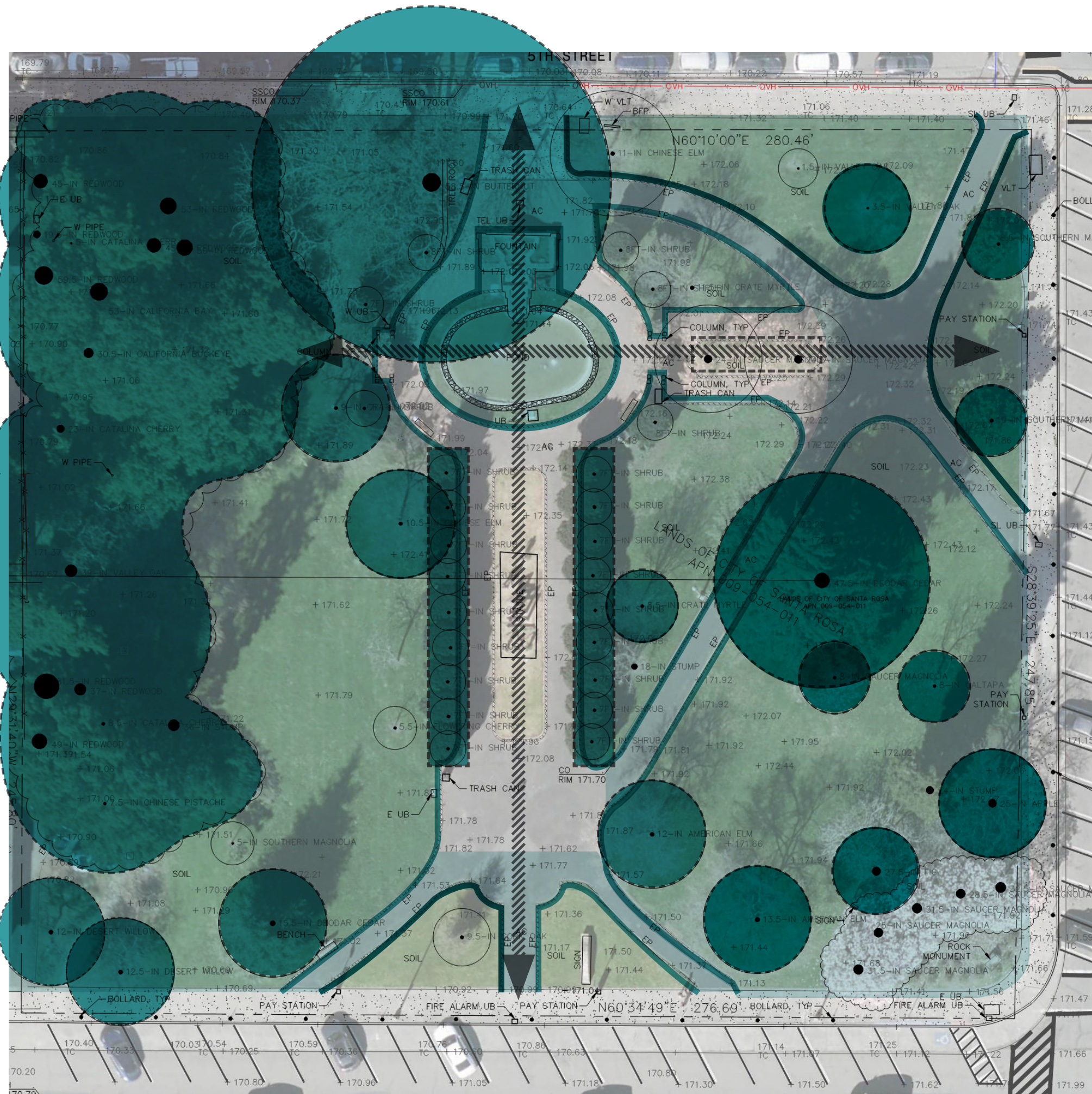


CHARACTER-DEFINING FEATURES

TO BE RETAINED OR REINTERPRETED IN THE REHABILITATION APPROACH

1. CENTRAL AXIS
2. SECONDARY AXIS
3. LILY POOL AND FOUNTAIN
4. SYMMETRICAL PLANTINGS
5. TERTIARY WALKWAYS
6. BRICK EDGING
7. OPEN LAWNS
8. SCATTERED SPECIMEN TREES
9. REDWOOD STAND





CHARACTER-DEFINING FEATURES

TO BE RETAINED OR REINTERPRETED IN THE REHABILITATION APPROACH

1. CENTRAL AXIS
2. SECONDARY AXIS
3. LILY POOL AND FOUNTAIN
4. SYMMETRICAL PLANTINGS
5. TERTIARY WALKWAYS
6. BRICK EDGING
7. OPEN LAWNS
8. SCATTERED SPECIMEN TREES
9. REDWOOD STAND



NATIONAL AND CALIFORNIA REGISTERS OF HISTORIC PLACES

Criterion A/1
(Events)

Criterion C/3
(Design)

SIGNIFICANCE OF FREMONT PARK

Association with Santa Rosa
Park and Recreation

Landscape Architect
Howard Gilkey

Beaux Arts inspired design

PERIOD OF SIGNIFICANCE

1929 - 1931

HISTORIC INTEGRITY

Sufficient to convey significance

STANDARDS FOR REHABILITATION

1

Maintaining historical use or minimize changes for new uses.

2

Preserving the historic character, avoiding alterations or removal of distinctive features.

3

Treating each property as a record of its time and place, avoiding false historical development.

4

Retaining changes that have gained historic significance.

5

Preserving distinctive materials, features, and craftsmanship.

6

Repairing deteriorated historic features rather than replacing them.

7

Using gentle treatments to avoid damaging historic materials.

8

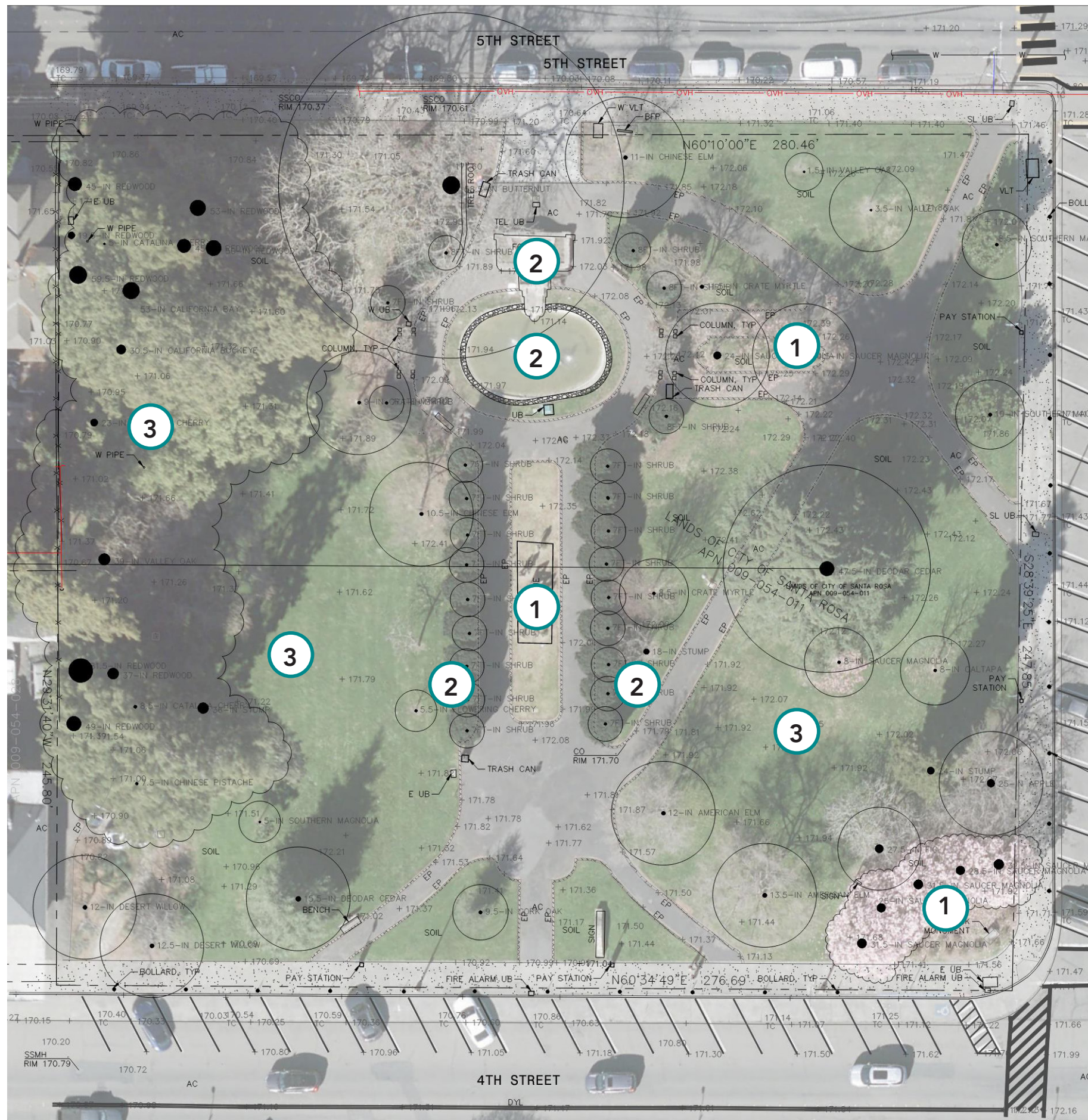
Protecting and preserve archaeological resources in place.

9

Ensuring new additions are compatible with historic elements.

10

Preserving the essential form and integrity of the historic property and its environment.



SCALE: 1"=20'

PARK REHABILITATION

OPPORTUNITIES INCLUDE, BUT ARE NOT LIMITED TO:

1. IMPROVEMENTS, MODIFICATIONS, OR REMOVALS WITHIN AREAS THAT HAVE BEEN ALTERED OUTSIDE OF THE PERIOD OF SIGNIFICANCE

- The magnolia trees in the east lawn flower bed
- Cancer Survivors Memorial
- Magnolia trees and memorial boulder at southeast corner

2. MODIFICATIONS AND ALTERATIONS TO FEATURES THAT RETAIN OVERALL DESIGN INTENT

- Alternative program or use of the lily pool
- Alterations to the fountain

3. ACTIVATION OF PASSIVE PARK AREAS

- Such as picnic, play areas, and possibly a small dog park
- Site-appropriate furnishings

A REHABILITATION TREATMENT WOULD RESULT IN A DESIGN THAT

- CLEARLY REFLECTS GILKEY'S BEAUX-ARTS INSPIRED DESIGN CONCEPT
- USES A PLANT PALETTE COMPATIBLE WITH THE HISTORIC PLANT LIST
 - RETAINS OR REINTERPRETS MOST OF THE PARK'S CHARACTER-
DEFINING FEATURES
 - SPECIFIES A NEW BUT COMPATIBLE SURFACING MATERIALS
- PROPOSES INSTALLATION OF COMPATIBLE NEW ACTIVE PARK USES/
FEATURES, AND CONTEMPORARY SITE FURNISHINGS, INCLUDING
BENCHES, LIGHTS, TRASH BINS, AND SIGNAGE



MASTER PLAN PRIORITIES

PRESERVE HISTORIC INTEGRITY
OF GILKEY'S PARK DESIGN WITH THE REHABILITATION APPROACH
OUTLINED BY MIG, INC

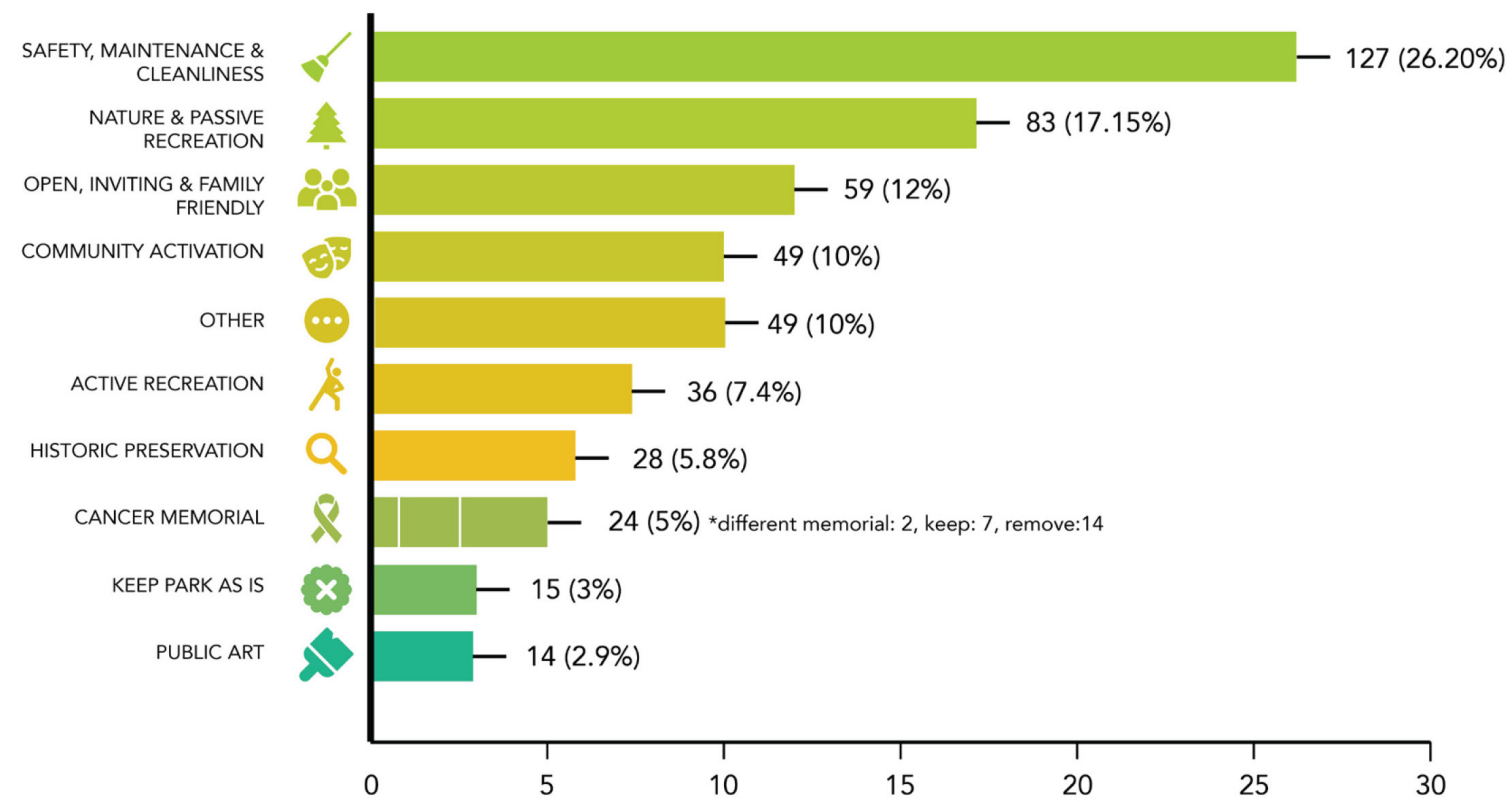
PROMOTE SAFETY
THROUGH CLEAR SIGHTLINES AND THE INCORPORATION
OF SITE LIGHTING

ACTIVATE THE PARK FOR MODERN USE
WITH THE ADDITION OF ACTIVE USES SUCH AS PLAY AREAS AND
CONTEMPORARY SITE FURNISHINGS

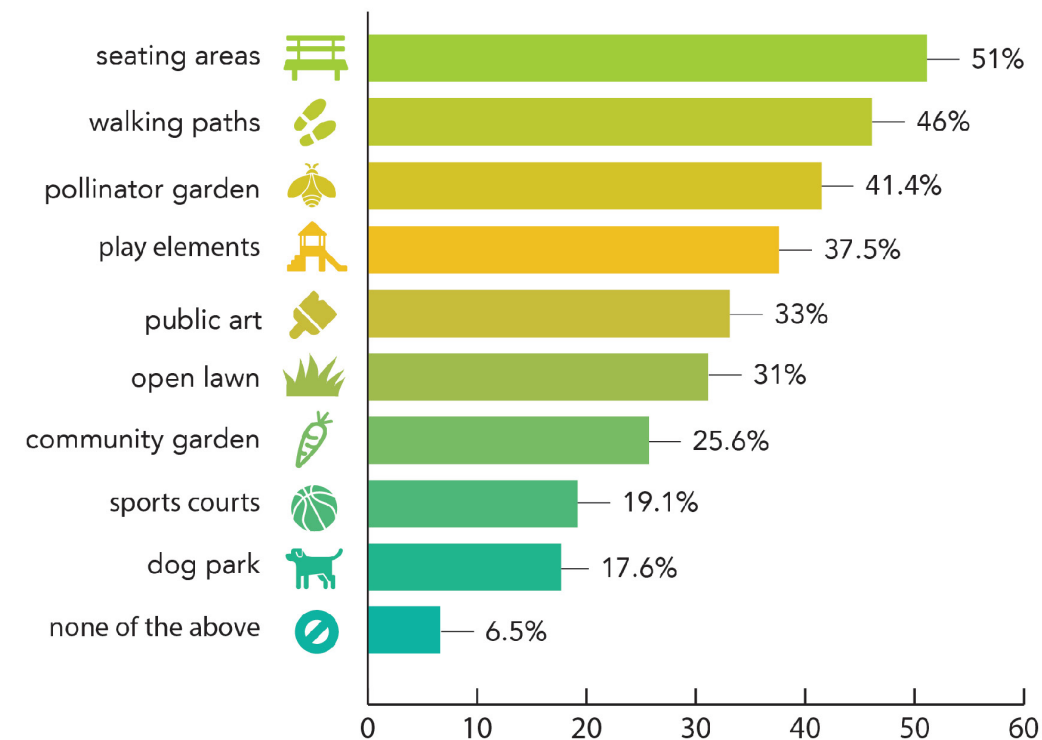
An aerial architectural rendering of a park design. The central area features a playground with various equipment including slides, swings, and a geodesic dome. It is surrounded by numerous trees of different sizes and shapes. The park is bordered by a road with a parking lot on the right side. Surrounding the park are several buildings of varying sizes and styles, including a large rectangular building and smaller houses. The entire scene is rendered in a light, sketchy style with muted colors.

SUMMARY OF PREVIOUS OUTREACH AND DESIGN

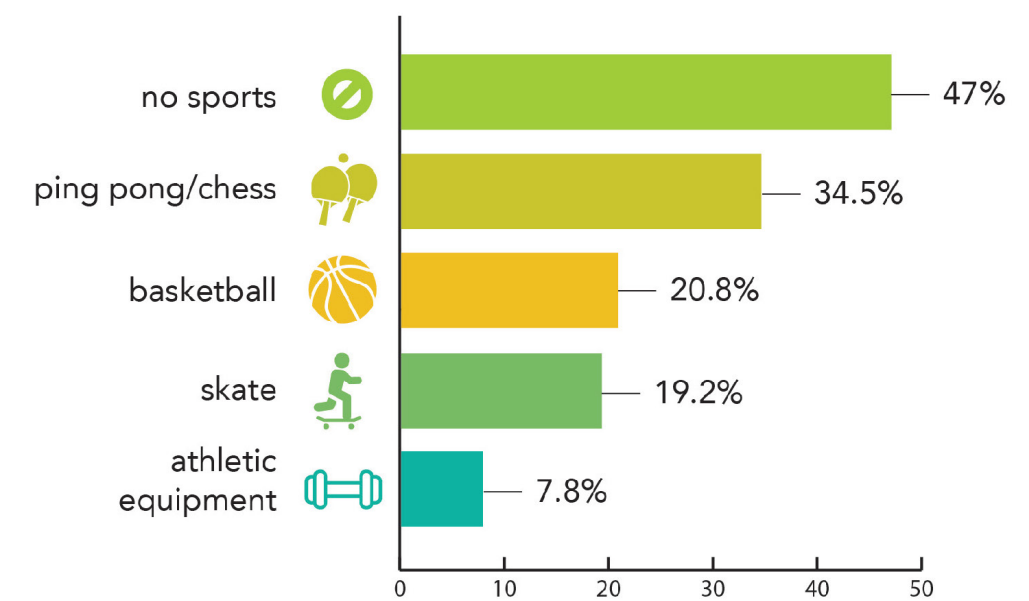
What would you like to see in the design?



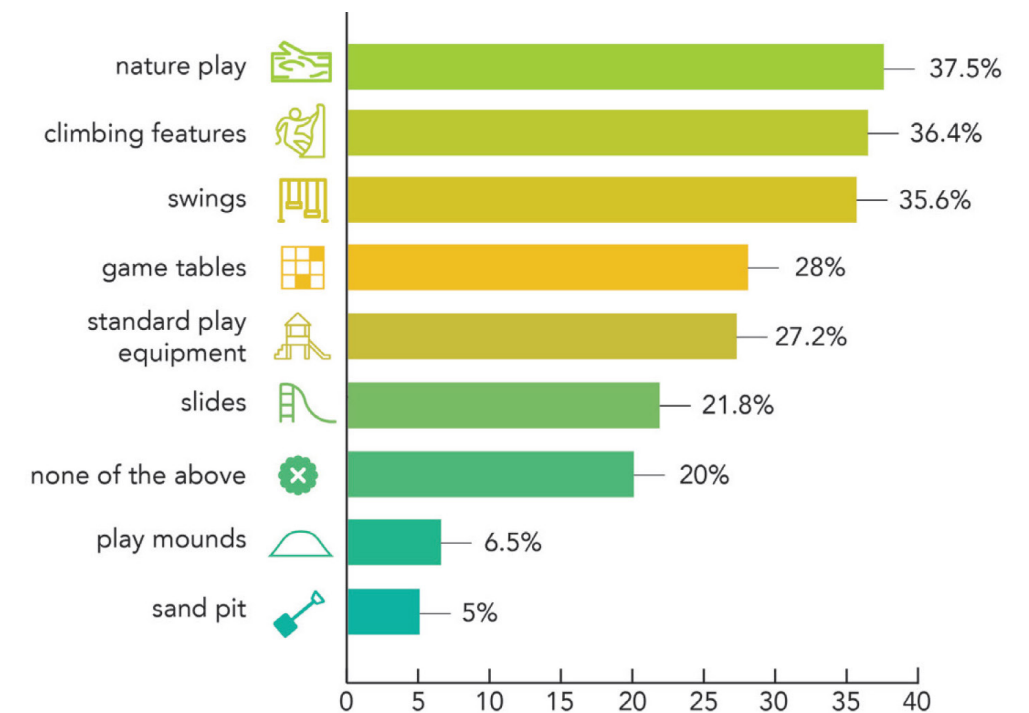
What features would make Fremont a great park?



What sports features would like to see in the park?



What play features would like to see in the park?



An aerial architectural rendering of a park area. The park features a central playground with various equipment including slides, swings, and a geodesic dome. There are several large trees, some with green foliage and others bare. A winding path or stream runs through the park. Surrounding the park are several buildings of different sizes and shapes, some with flat roofs and others with gabled roofs. The entire scene is rendered in a light, sketchy style with a muted color palette.

OPPORTUNITIES AND MASTER PLAN PRIORITIES

GENERAL FEATURES



SEATING AND PICNIC AREAS
[51%]



WALKING PATHS
[46%]



OPEN / INFORMAL LAWNS
[31%]

SPORT & GAMING FEATURES



TABLE TENNIS
[34.5%]



CHESS
[34.5%]

PLAY FEATURES



NATURE PLAY AREAS
[37.5%]



CLIMBING AREAS
[36.4%]

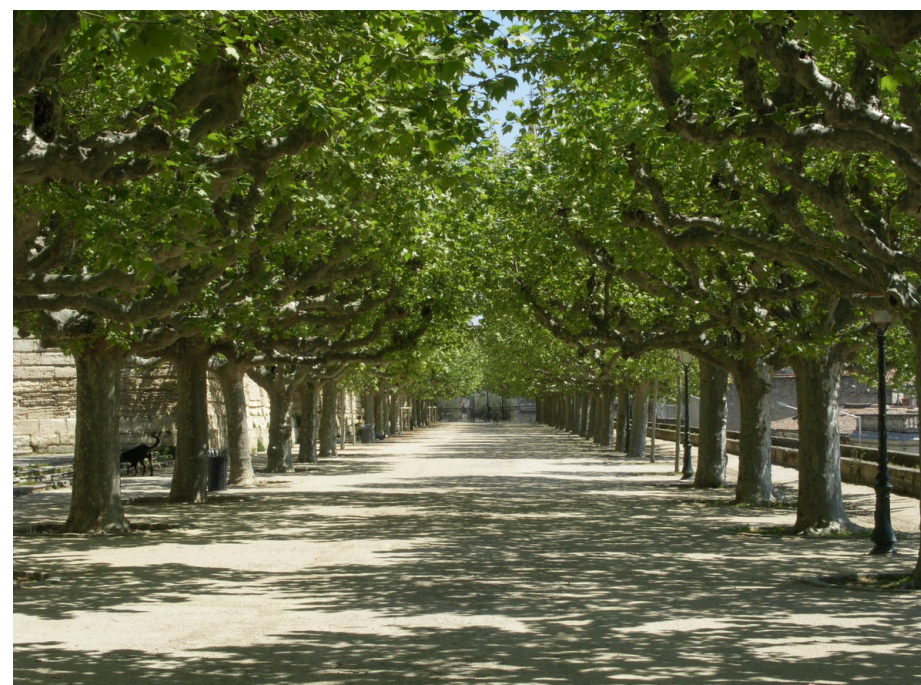


SWINGS
[35.6%]

SITE DESIGN FEATURES



CENTRAL PLAZA



CENTRAL AXES



GREATER SEATING

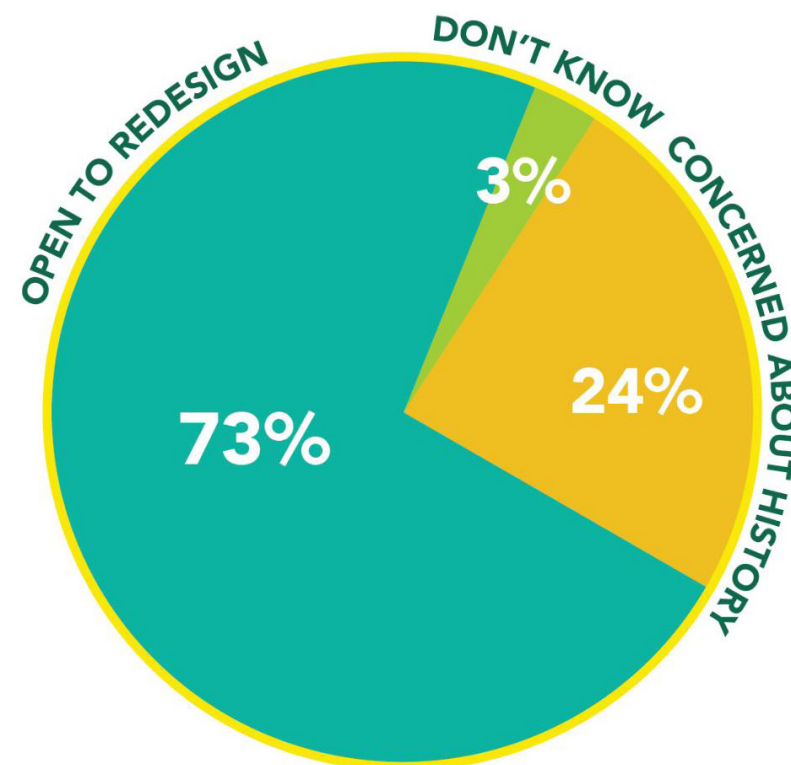
HISTORIC FEATURES



**PRESERVATION OF
EXISTING TREES IN
GOOD HEALTH**



**MODIFYING OR
REHABILITATING FEATURES
THAT RETAIN OVERALL
DESIGN INTENT**



- 24% of the survey responders are concerned about the preservation of Fremont Park's historical elements
- 73% are open to Fremont Park's redesign
- 3% are not sure

FRANKLIN PARK

Washington, D.C.
OLIN + David Rubin Land
Collective





POOR TREE HEALTH



PREVENTS UNIVERSAL ACCESSIBILITY



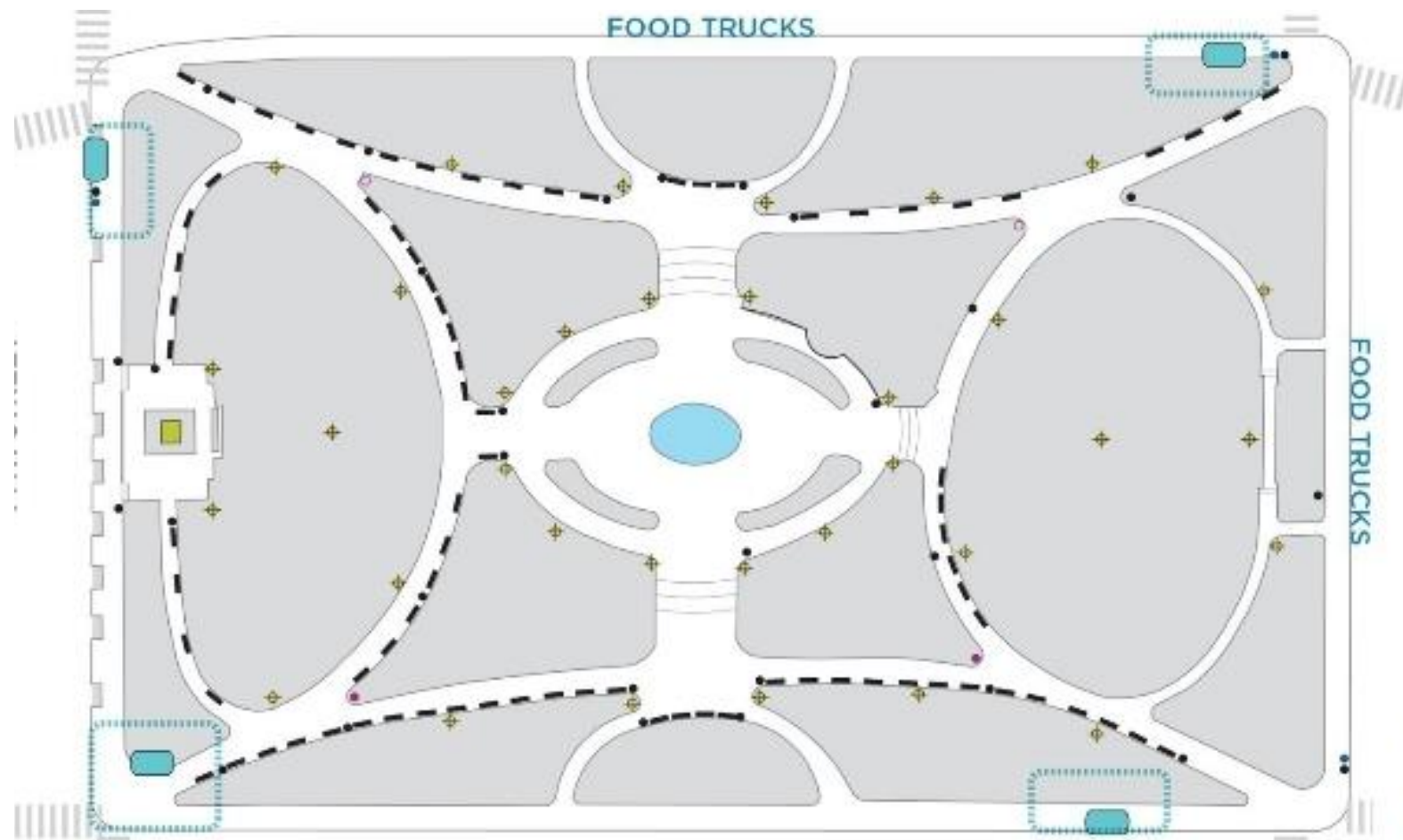
DETERIORATING PATHS



COMPACTED SOILS

FRANKLIN PARK

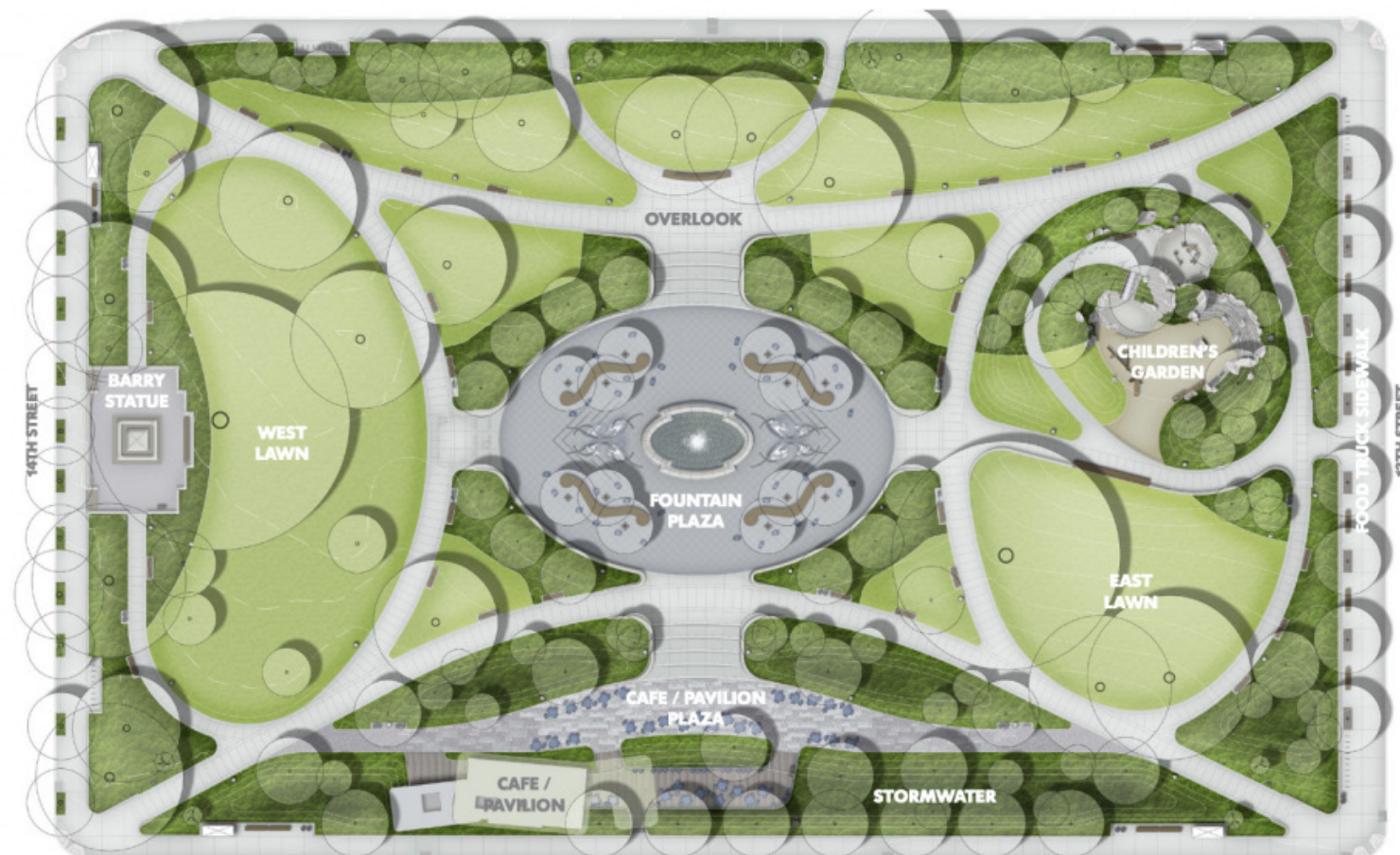
Previous Site Conditions



Before Rehabilitation

FRANKLIN PARK

Before and After



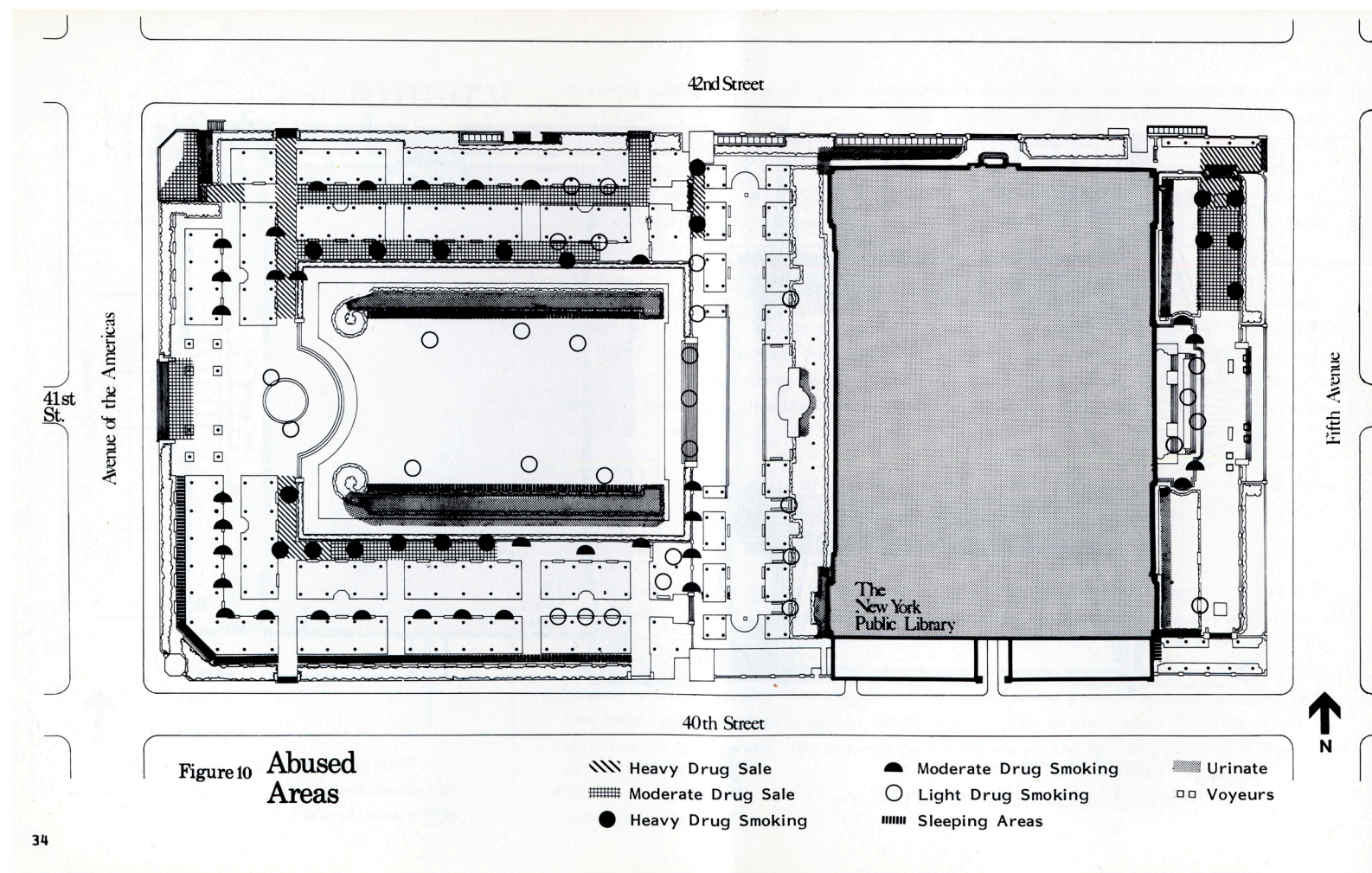
After Rehabilitation



BRYANT PARK

New York, New York





BRYANT PARK

Previous Existing Conditions

BRYANT PARK

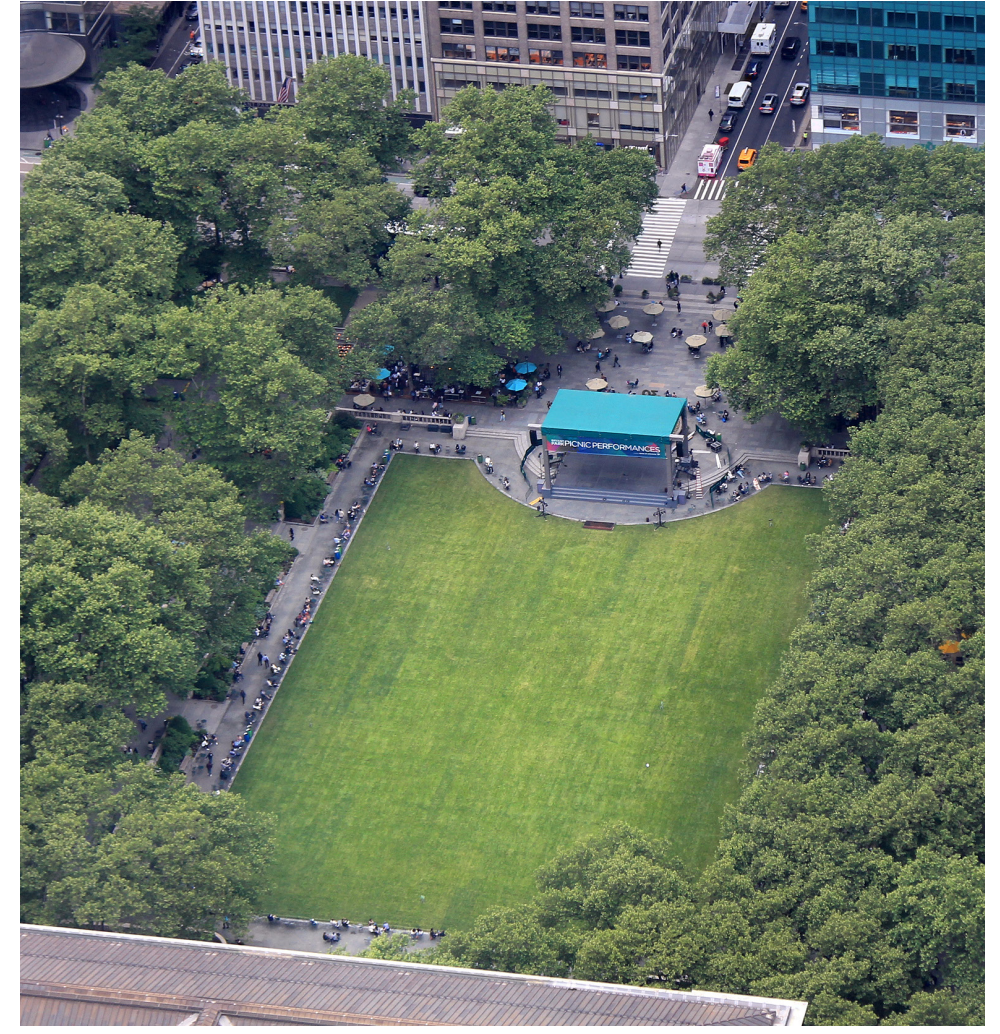
Through Time



1931



1934



Present Day





THANK YOU

4.17.2024 CHB PRESENTATION

