

New Service Building for Hansel Ford Concept Design Review

0 Wiljan Court

December 19, 2024

Sachnoor Bisla, City Planner
Planning and Economic Development

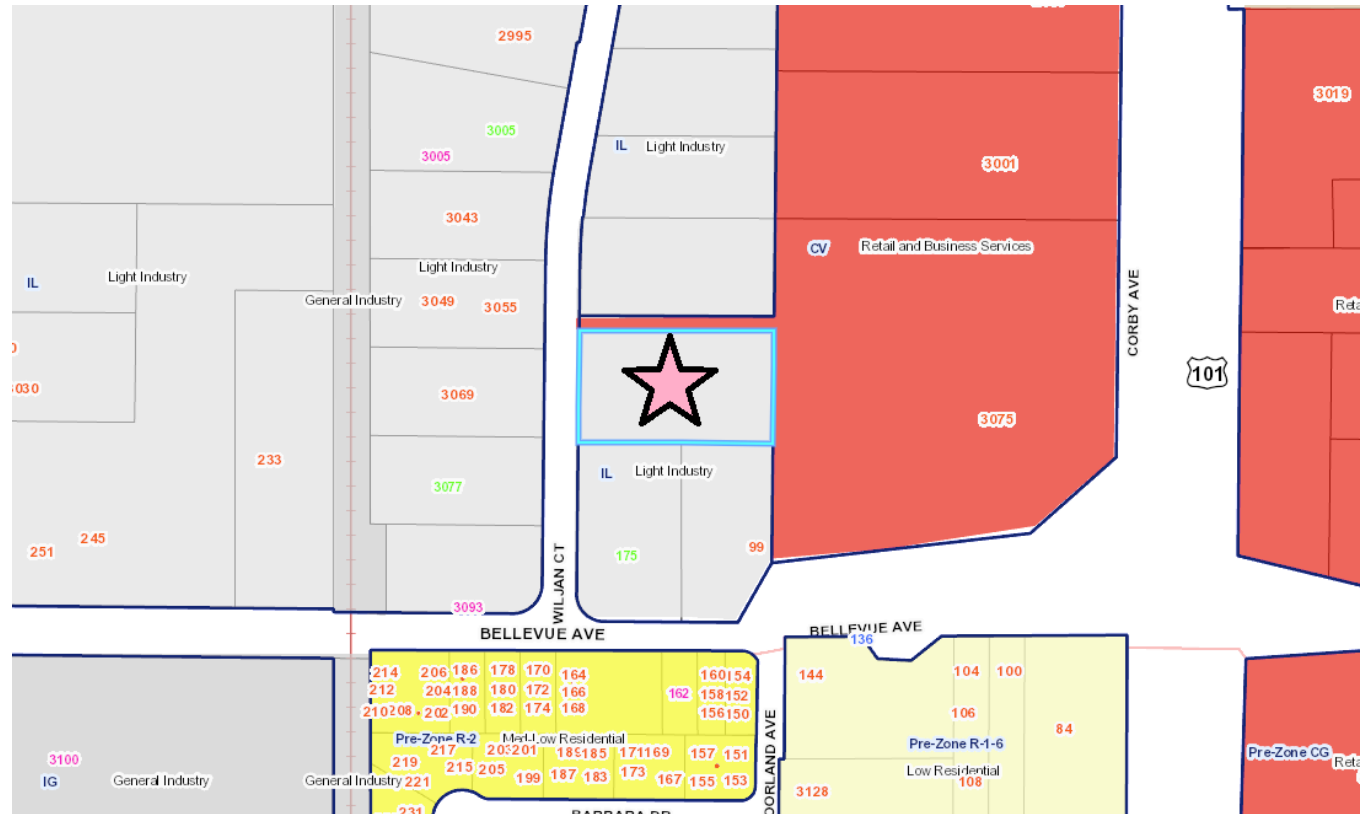
- Construct new 13,770 SF commercial truck service building for Hansel Ford of Santa Rosa



Zoning District and General Plan Land Use Designation

- Zoning District:
IL (Light Industrial)

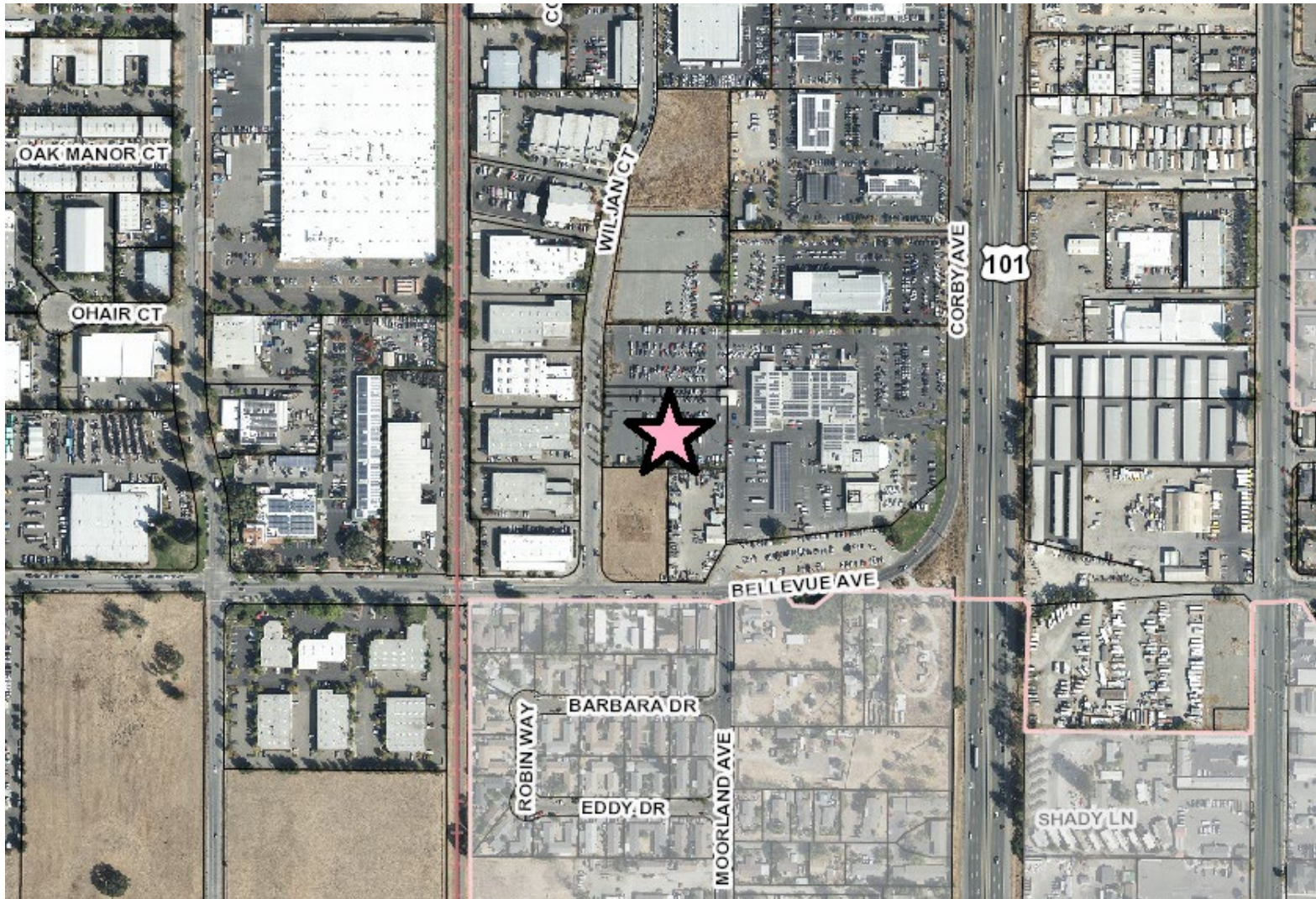
- General Plan Land Use Designation:
Light Industrial



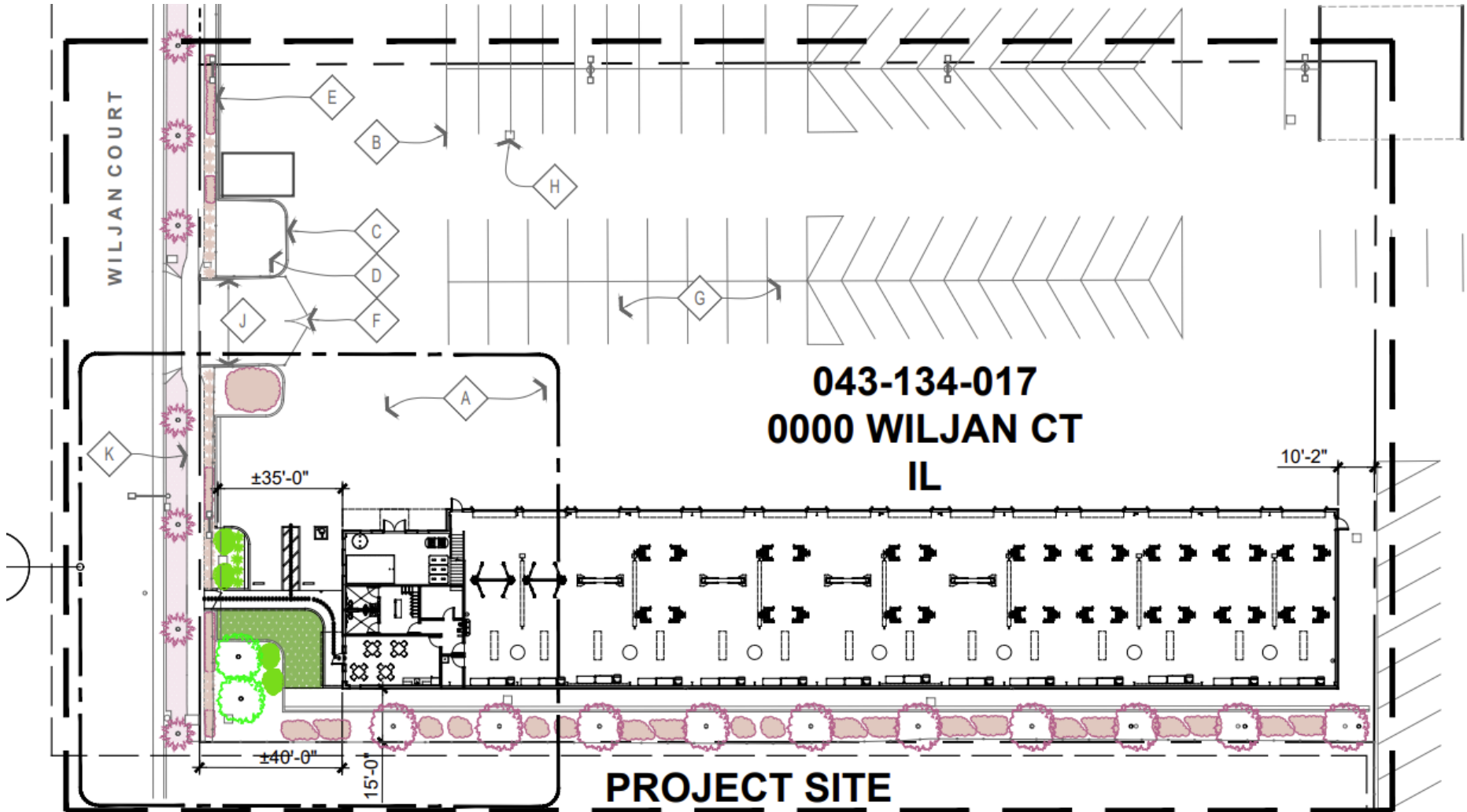
- Minor Conditional Use Permit
- Design Review



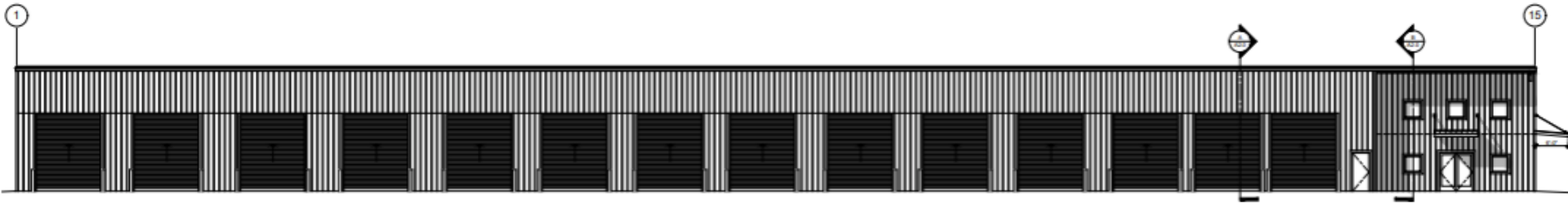
Neighborhood Context



Proposed Site Plan

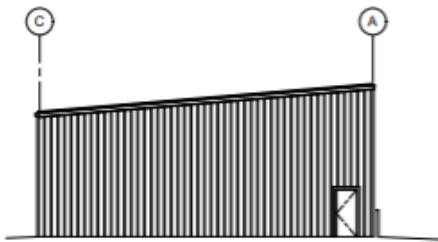


Proposed Elevations



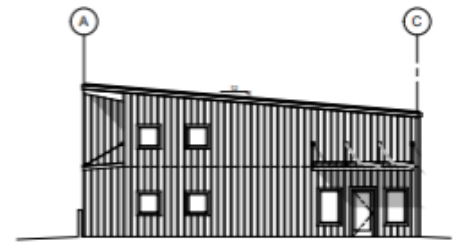
PROPOSED EXTERIOR ELEVATION
NORTH

SCALE: 1/8" = 1'-0" (N)



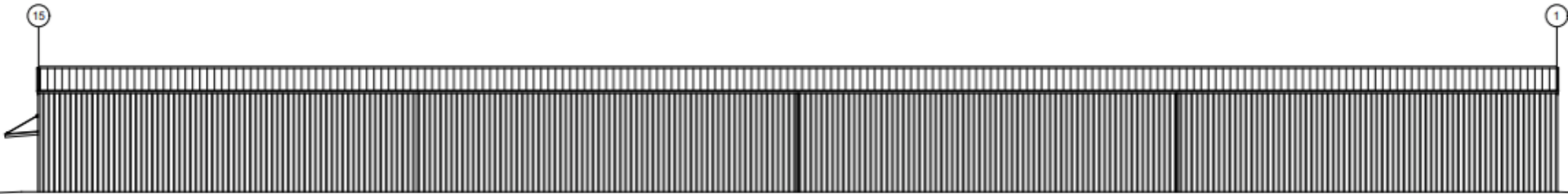
PROPOSED EXTERIOR ELEVATION
EAST

SCALE: 1/8" = 1'-0" (E)



PROPOSED EXTERIOR ELEVATION
WEST

SCALE: 1/8" = 1'-0" (W)



PROPOSED EXTERIOR ELEVATION
SOUTH

SCALE: 1/8" = 1'-0" (S)

Photo Renderings



Photo Renderings





The Planning and Economic Development Department requests that the Design Review Board provide comments for the New Service Building for Hansel Ford of Santa Rosa proposed at 0 Wiljan Court.



Sachnoor Bisla, City Planner

(707) 543-3223

sbisla@srcity.org

