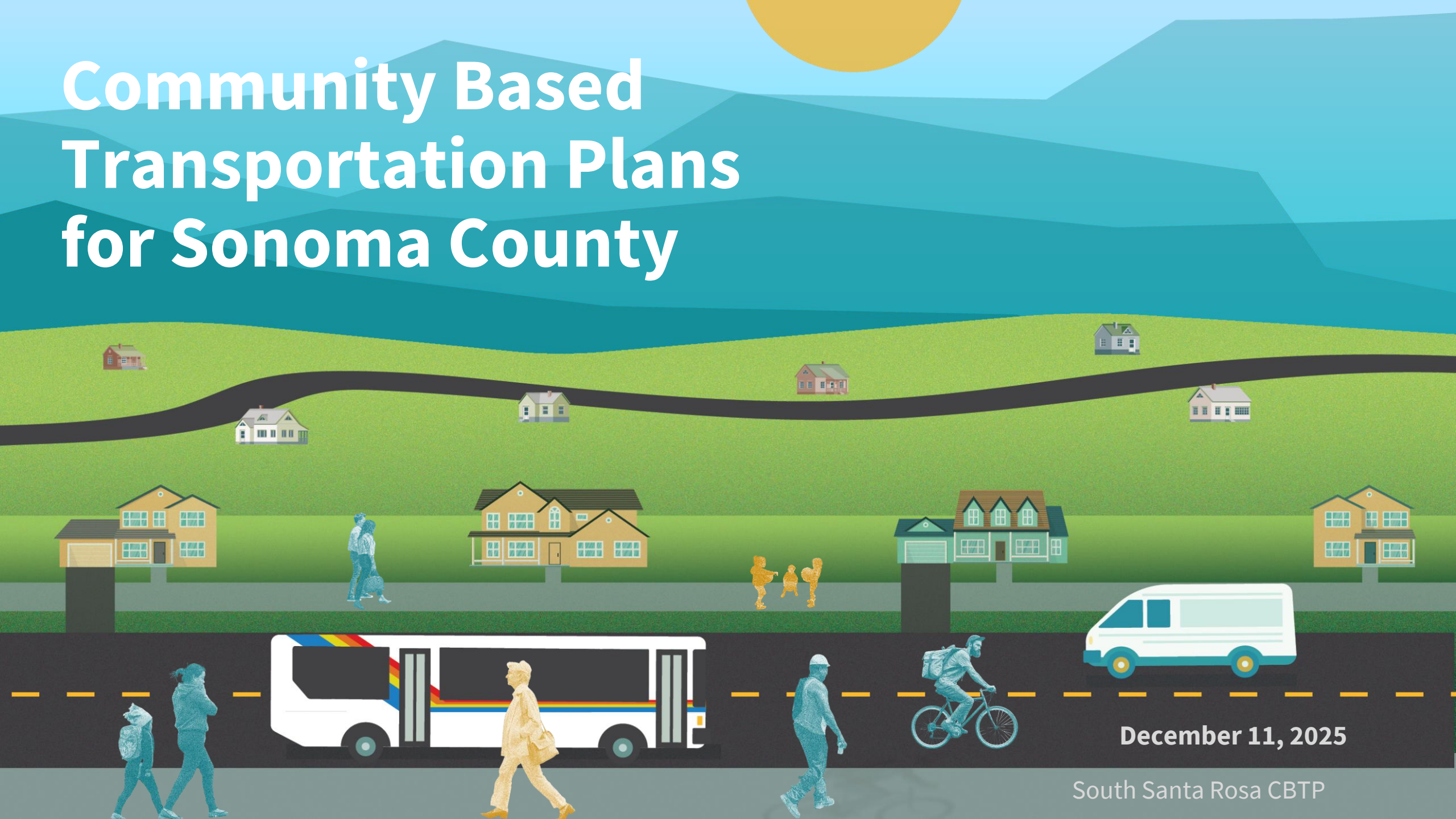


Community Based Transportation Plans for Sonoma County



December 11, 2025

South Santa Rosa CBTP

Community-Based Transportation Plan (CBTP) Overview

1. CBTP Outline

- a. Purpose
- b. Study Area
- c. Team Structure

2. Community Engagement


- a. Phase 1
- b. Phase 2

3. CBTP Projects

- a. Top Community Priorities

4. Next Steps

What is the purpose of a CBTP?



Community-Based Transportation Plans bring residents, community organizations, and planning agencies together to identify priority projects for low-income communities.

Each plan includes:

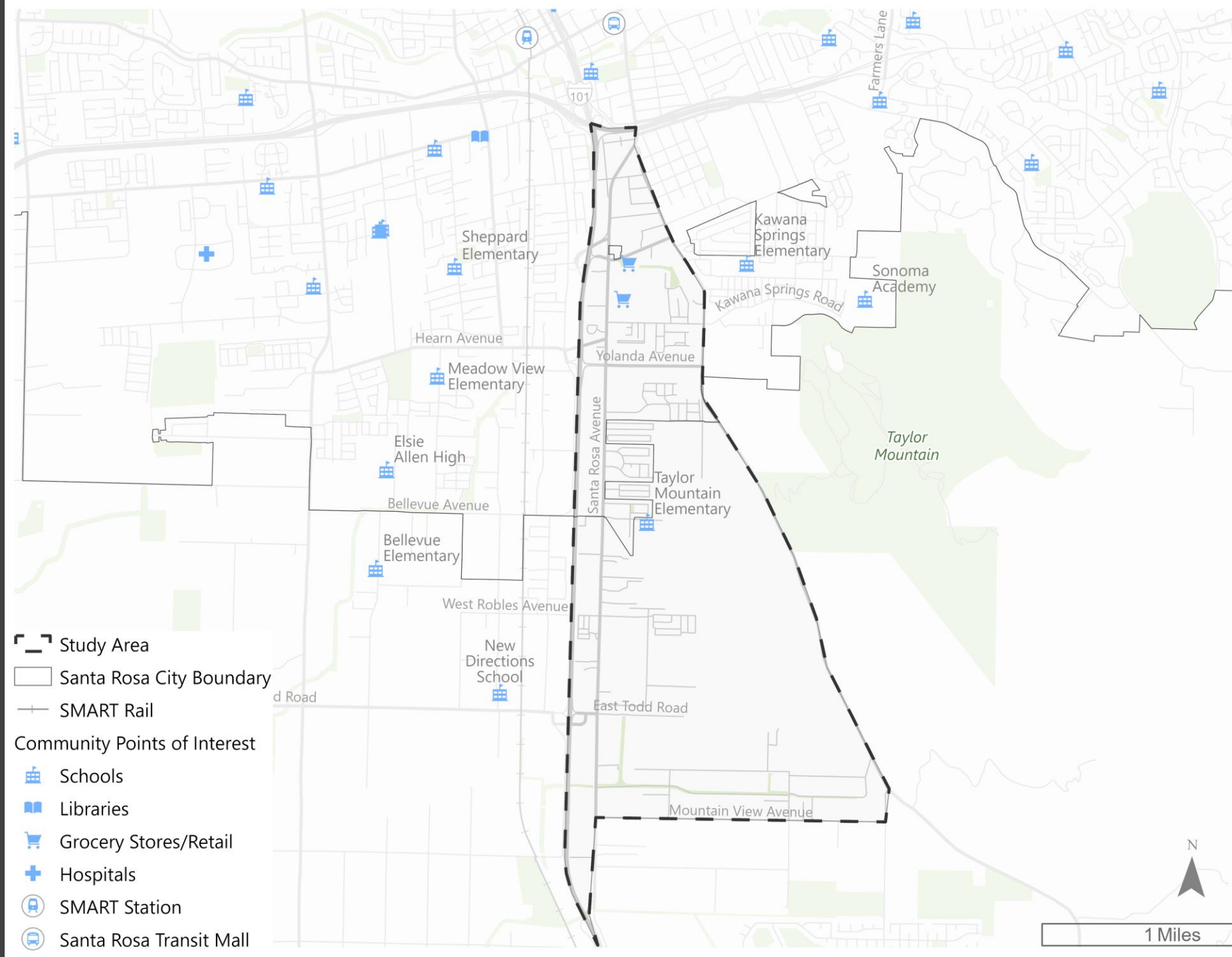
- Demographic and data analysis
- Robust community engagement
- Documentation of transportation challenges
- **Community-prioritized project list**
- Implementation plan including possible funding sources, responsible agencies, and rough cost estimates

Don't cities already have a bunch of transportation plans with project lists?

Yes, but we don't always hear from residents in disadvantaged neighborhoods when preparing those plans. **CBTPs dedicate resources to learn from underrepresented voices.**

Yes, but CBTPs prepare more detailed project descriptions and document equity community support – both critical pieces of **successful grant funding applications.**

CBTP Study Area: South Santa Rosa



Santa Rosa CBTP Team

- SCTCA Leads
- City Staff
- Consultant Team
- Community Representatives
- Technical Advisors

SCTCA: Chris Barney & Steph Britt

City of Santa Rosa: Torina Wilson, Conor McKay, & Yuri Kolsen

Consultant Team: Fehr & Peers & Latino Service Providers

	Communities Represented	Representative
1	Community Member	Leslie Heckathorn
2	Community Member	Arthur Deicke
3	Community Member	Daniella Stanghellini
4	Assistant General Manager, Sports Basement	Kyra Lefferts
5	Youth Promotores Representative from Latino Service Providers	Kevin Olalde Bernal
6	Sonoma County Bicycle and Pedestrian Advisory Committee	Vin Hoagland

	Technical Advisor Agency	Representative
1	Caltrans	Fredrick Schermer
2	Federated Indians Graton Rancheria	Buffy McQuillen
3	MTC/ABAG	Janica Mendillo
4	Sonoma County	Will Lyons
5	Sonoma County Health and Human Services	Laurel Chambers
6	Sonoma County Transit	Steven Schmitz
7	Sonoma Marin Area Rail Transit (SMART)	Zoe Unruh
8	Safe Routes to Schools, SCBC	Christina Panza
9	Sonoma County Bicycle Coalition	Eris Weaver



Community Engagement Phase 1:

Winter/Spring 2025: *Understanding Community Transportation Challenges*

- 3 TAC meetings, 1 CRC meeting
- 1 website & online survey
- 1 focus group
 - Latino Service Providers Youth Promotores
- 5 pop ups
 - Santa Rosa Transit Mall
 - Lamplighter Mobile Home
 - Taylor Mountain Elementary School
 - Lola's Market
 - Sports Basement





Community Engagement Phase 2

Summer 2025: Prioritizing Solutions

- 2 TAC meetings
- 2 CRC meetings
- 1 website & online survey
- 1 transportation resource fair



**We also
provided
food, prizes,
and
information
about
community
travel options**

Partners Involved:

- **City of Santa Rosa**
- **SCTCA/MASCOTS Study**
- **Redwood Bikeshare**
- **Sonoma County Bicycle Coalition**
- **Sonoma County Transit**
- **Santa Rosa CityBus**
- **Sonoma County DHS**
- **Latino Service Providers**





CBTP Projects

Top Community Requests



In Phase 2, we asked community members to prioritize the “long list” of ideas that emerged in Phase 1

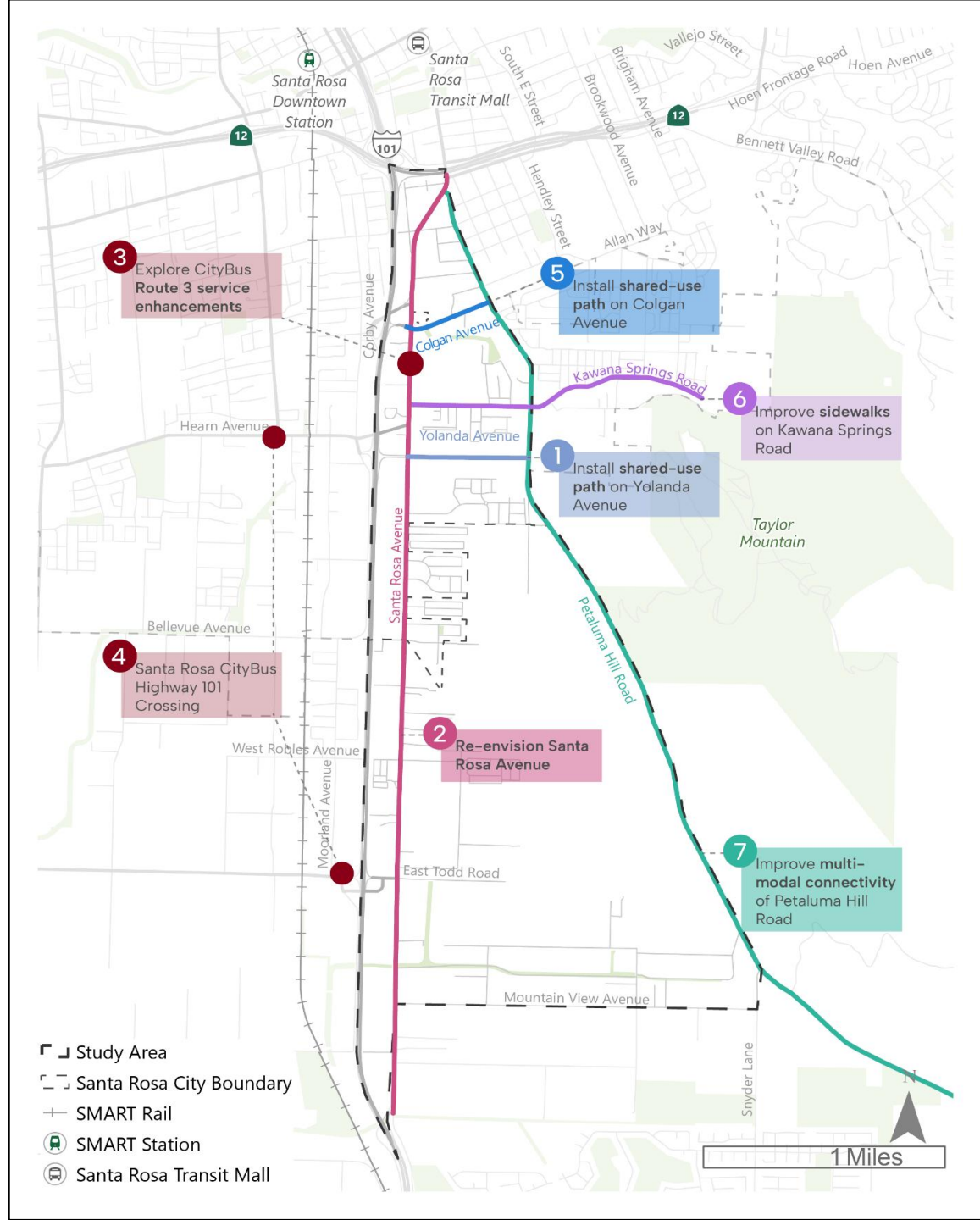
Improvement Type	Category	Lead Agency	Improvement Description	Shorter Description	Notes	TAC Follow-up
			Albert J Boro Community Center - at Soccer field			
Lighting	Recreational route lighting impro	City of San Rafael	Lighting throughout the entire walking route at Pickweed Park			
Lighting	Recreational route lighting impro	City of San Rafael	Additional lighting on the path between Bellam and Spinnaker Point			
Lighting	Recreational route lighting impro	City of San Rafael	Additional lighting on the Bay Trail between Pickleweed Park and Baypoint Village			Kate: can't put su
Operations			Signal timing on Bellam	don't include at open house		
Parking						
Pedestrian	New ped crossing improvements	City of San Rafael	Traffic calming in the Canal - elements to slow down vehicle	Traffic calming		Lauren: traffic ca
Pedestrian	New ped crossing improvements	City of San Rafael	RRFBs on Fairfax St	Ped crossing signals		Kate: Lauren and
Pedestrian	New ped crossing improvements	City of San Rafael	RRFBs on Sonoma St	Ped crossing signals		Lauren: added ne
Pedestrian	New ped crossing improvements	City of San Rafael	RRFBs at Canal and Medway	Ped crossing signals		
Pedestrian	New ped crossing improvements	City of San Rafael	Traffic calming on Canal St near Medway	Traffic calming		
Pedestrian	Signange upgrades	City of San Rafael	Speed limit signs in the Canal	Speed limit signs		Derek: recent ch do that as part of Lauren: Speed lir people will still c
Bike	Bike access	Marin Transit/GGT/TAM	Additional bike racks on buses			MT: 3 bike racks Kate: transit dep get from bus to v to buses. small b buses pick up exi GGT: 3 is the max on a way that do back, but usually rare to have an is sausalito to sf bu
Transit Stops	Improvements to existing service	Marin Transit/GGT	Replacing the bus shelter at Canal/Sonoma	Bus shelters		GGT: This would
Transit Stops	Cleanliness improvements	Marin Transit/GGT/City of San Raf	Addressing the rat problem at bus stops (e.g. Pickleweed Park and 7-11)	Cleanliness/trash can maintenance		This would be un
Transit	Improvements to existing service	GGT	Additional stop on Woodland Ave for the Golden Gate Transit 580 route to Richmond	don't include at open house	this is to Richmond only - riders have to walk to the transit	

Santa Rosa Categories

- 1: Transit Improvements
- 2: Bicycle Improvements
- 3: Pedestrian Improvements
- 4: Santa Rosa Avenue Improvements

South Santa Rosa

Community Priorities



Project	Description	Quick Build	Short Term	Medium Term	Long Term	Priority
1. Shared-use Path on Yolanda Avenue	Install shared-use path on Yolanda Avenue Address sidewalk gaps on Yolanda Avenue Improve Yolanda Avenue and Santa Rosa Avenue intersection Improve Petaluma Hill Road and Yolanda Avenue intersection			X	X	Medium - High
2. Re-Envision Santa Rosa Avenue	Install shared-use path between Maple Avenue and Bennett Valley Road Install separated bikeway on Santa Rosa Avenue between Bennett Valley Road and southern city limits Install buffered bike lanes between southern city limits and Todd Road Conduct lighting study on Santa Rosa Avenue Improve various intersections throughout corridor	X	X	X	X	Low-High
3. Improve Santa Rosa CityBus Route 3	Implement operational changes to Route 3 frequency and/or schedule Extend Route 3 south along Santa Rosa Avenue		X		X	High Low
4. Santa Rosa CityBus Highway 101 Crossing	Add east-west CityBus transit crossing at Hearn Avenue		X			Low
5. Shared-Use Path on Colgan Avenue	Install shared-use path on Colgan Avenue Address sidewalk gaps on both sides of Colgan Avenue			X		Medium
6. Sidewalks on Kawana Springs Road	Address sidewalk gaps on Kawana Springs Road Improve Kawana Springs Road and Petaluma Hill Road pedestrian/bicycle crossing			X	X	Medium Low
7. Multimodal Connectivity of Petaluma Hill Road	Install separated bikeway on Petaluma Hill Road between Santa Rosa Avenue and Yolanda Avenue Evaluate bike infrastrucutre opportunities south of Yolanda Avenue Improve various intersections	X	X	X	X	Low-High



**South
Santa Rosa**

Community-Based Transportation Plan

Submitted to:
Sonoma County Transportation
and Climate Authorities

Submitted on:
December 2025



Fehr & Peers

Next Steps

- **Early Nov.** SCTCA, city staff, technical advisors, and community representatives reviewed
- **Mid-Nov. – Mid-Dec.** Public comment period on Draft CBTPs through project websites
- **Dec. 8** Presented to SCTCA Board of Directors
- **Dec. 12** Comment Period on Draft CBTP Closes
- **Dec. 11** Presented to City of Santa Rosa Planning Commission
- **2026 Onwards** Advance CBTP priorities through regular project processes and grants
- **Next Comprehensive Transportation Plan Update**
SCTCA will complete status check on CBTP projects