

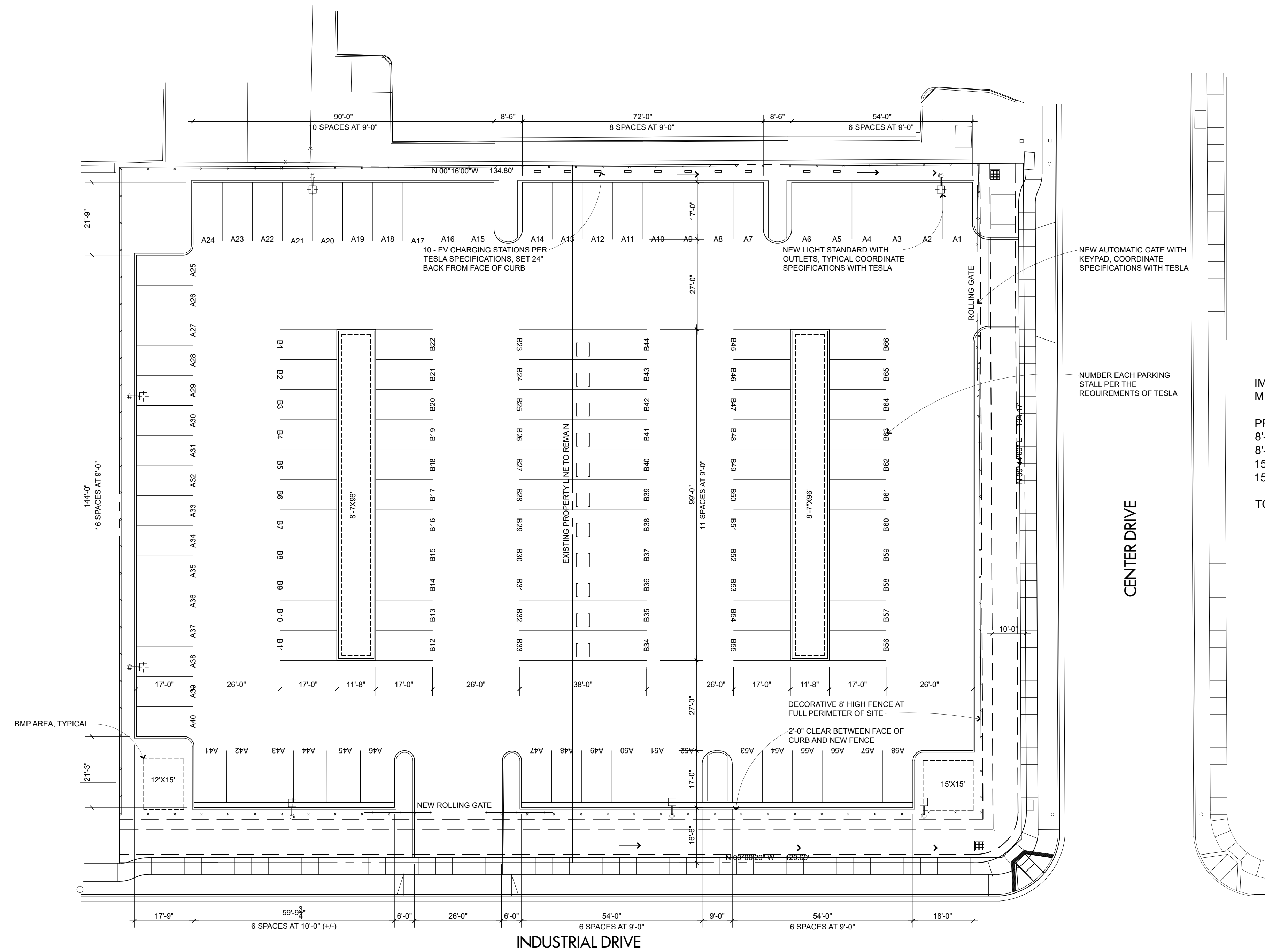
ADJACENT BUILDING

NEW DOUBLE ROLLING GATE

NEW 8'-0" HIGH WROUGHT  
IRON FENCE WITH BLACK  
FINISH (MONTAGE, MAJESTIC  
WITH 3 RAILS AND 4" AIR GAP)

**PROPOSED WEST ELEVATION - SOUTH ELEVATION SIMILAR**

SCALE: 3/32"=1'-0"



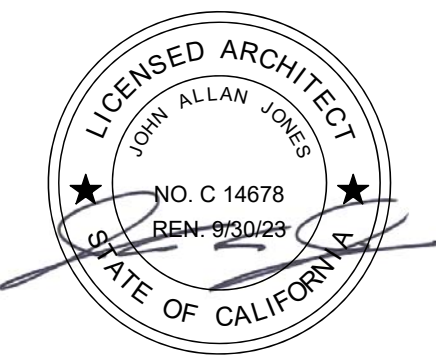
IMPERVIOUS AREA = 45,523 SF  
MIN. BMP AREA (4.5%) = 2,049 SF

PROVIDED BMP AREA:  
8'-7"X96'-0" = 828 SF  
8'-7"X96'-0" = 828 SF  
15'-0"X15'-0" = 225 SF  
15'-0"X15'-0" = 225 SF

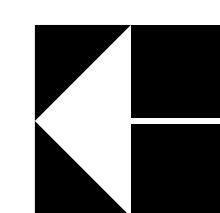
TOTAL BMP AREA = 2,106 SF

TESLA PARKING

3300 INDUSTRIAL DRIVE  
SANTA ROSA, CALIFORNIA



c:\users\jjohn\documents\acad drawings\1000 john's jobs\2023 jobs\2301 tesla parking\it\construction documents\2301-dr.dwg



**PROPOSED SITE PLAN - 3300 INDUSTRIAL DRIVE**

SCALE: 1"=20'

APN: 015-670-038  
Drawn By JAJ  
Job No. 2301  
File Name 2301-dr.dwg  
Plotted 8/7/2023 3:59 PM

Sheet  
SITE PLAN  
ELEVATION