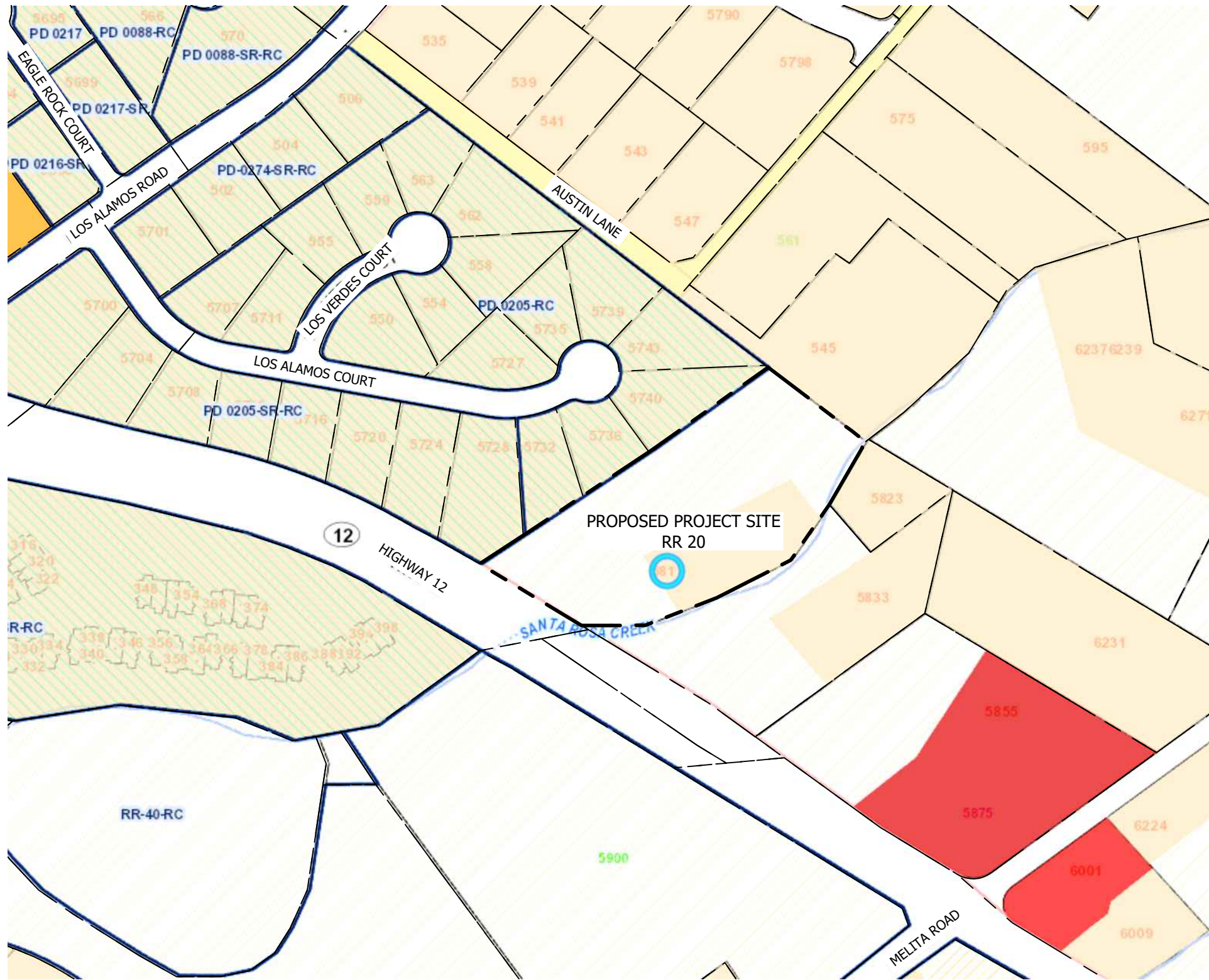
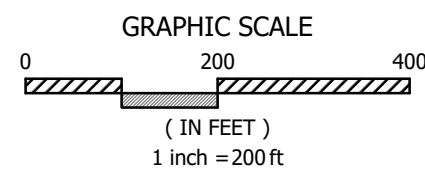
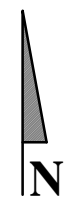


8/21/2023 10:08 AM Plotted by Chad S:\Clients\2769-22 John Pol - 5817 Highway 12, Santa Rosa CA\CAD\Civil Engineering\Exhibits\2769-22 Zoning and Existing Land Use Map.dwg



- Existing Land Use**
- Residential - Single Family
 - Residential - Multi Family
 - Residential - Senior
 - Residential - Mobile Home
 - Common Area
 - Business - Office
 - Business Strip
 - Business - Shopping Center
 - Business - Motel
 - Public / Institutional
 - Industrial - Light
 - Industrial - Heavy
 - Industrial - Warehouse
 - Recreation
 - Creek / Waterway
 - Educational
 - Landscape
 - Open Space
 - Parking
 - Private Road
 - Railroad Right-of-Way
 - Vacant - Very Low Density
 - Vacant - Low Density
 - Vacant - Med Low Density
 - Vacant - Medium Density
 - Vacant - Med High Density
 - Vacant - Mobile Home
 - Vacant - Light Industrial
 - Vacant - Light Industrial / Med Density
 - Vacant - General Industrial
 - Vacant - Business Park
 - Vacant - Commercial
 - Vacant - Transit Village Med Density
 - Vacant - Transit Village Mixed Use
 - Vacant - Public / Industrial
 - Vacant - Educational
 - Vacant - Office
 - Vacant - Office / Medium



Attachment 6

City of Santa Rosa
Planning & Economic
Development Department
09/18/2023
RECEIVED

NOT FOR CONSTRUCTION

BC ENGINEERING GROUP, INC.
CIVIL ENGINEERING & LAND PLANNING
www.bcengineeringgroup.com
Phone: 707.542.4321
2800 Cleveland Ave, Suite B
Santa Rosa, CA 95403



LANDS OF POL
CITY OF SANTA ROSA ZONING & EXISTING
LAND USE MAP
JOHN POL
5817 HIGHWAY 12
SANTA ROSA, CA 95409

APN:031-090-041

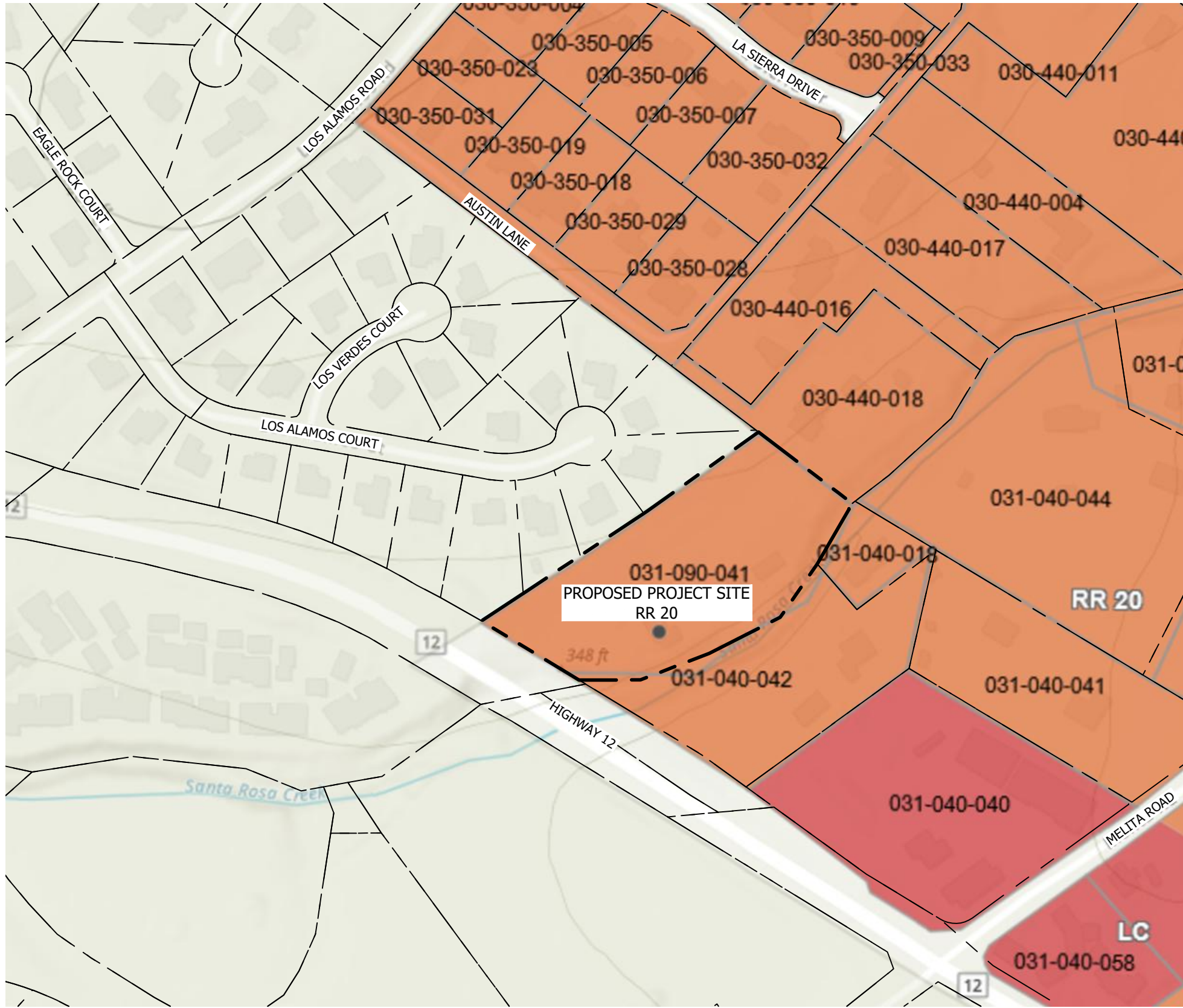
Date: 07/31/2023

Job: 2769-22

Drawn: CD

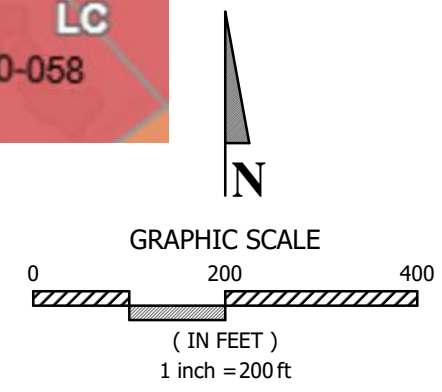
EXHIBIT

1 of 2



Land Use

- DA - Diverse Agriculture
- GC - General Commercial
- GI - General Industrial
- LC - Limited Commercial
- LEA - Land Extensive Agriculture
- LI - Limited Industrial
- LIA - Land Intensive Agriculture
- PQP - Public/Quasi Public
- RR - Rural Residential
- RRD - Resources & Rural Development
- RVSC - Recreation & Visitor-Serving Commercial
- SDC - Sonoma Developmental Center
- UR - Urban Residential



BC ENGINEERING GROUP, INC.
CIVIL ENGINEERING & LAND PLANNING

www.bcengineeringgroup.com
 Phone: 707.542.4321
 2800 Cleveland Ave, Suite B
 Santa Rosa, CA 95403

LANDS OF POL
COUNTY OF SONOMA ZONING & EXISTING
LAND USE MAP
 JOHN POL
 5817 HIGHWAY 12
 SANTA ROSA, CA 95409

APN:031-090-041
 Date: 07/31/2023
 Job: 2769-22
 Drawn: CD

EXHIBIT
 2 of 2

NOT FOR CONSTRUCTION