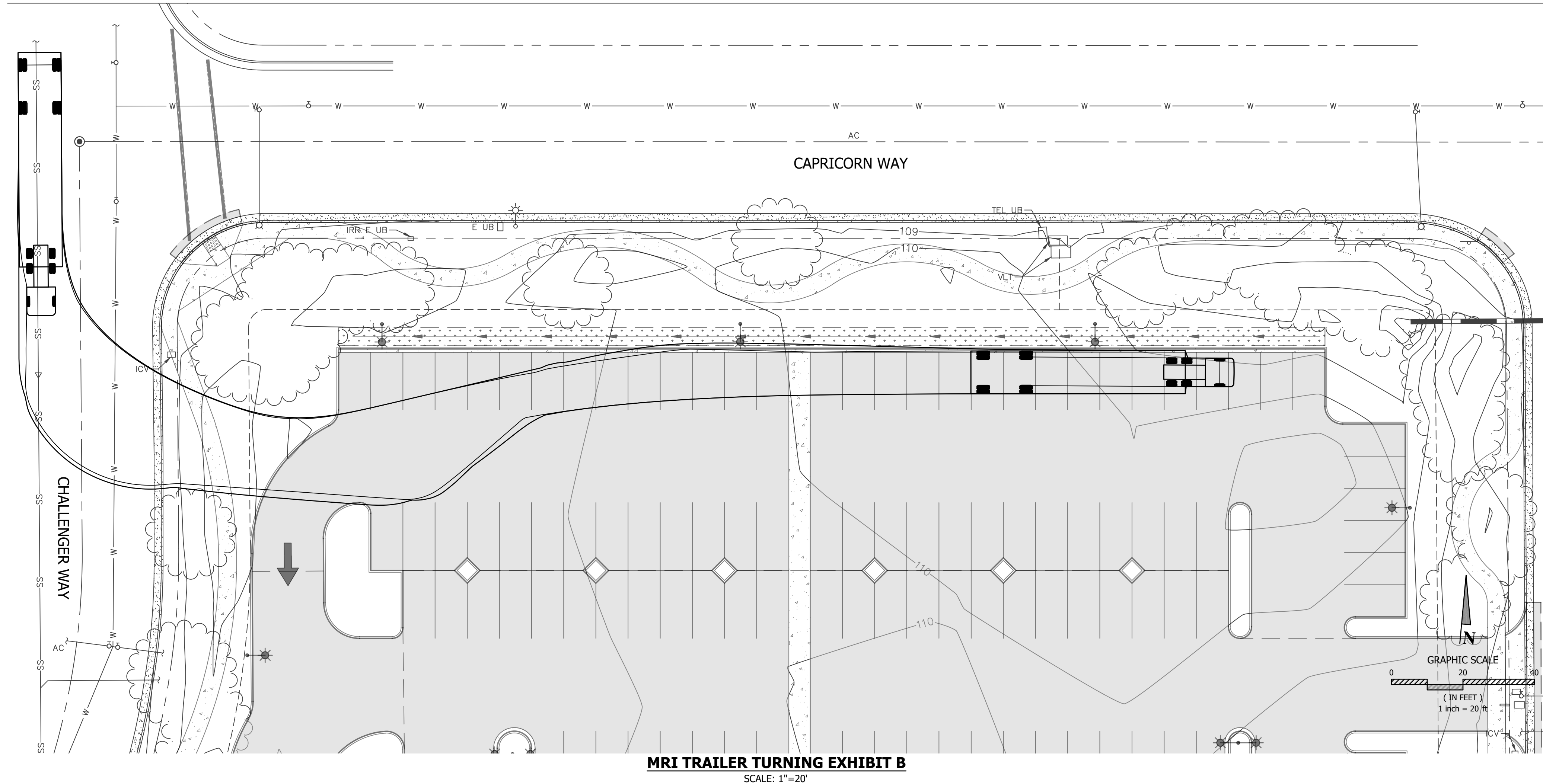
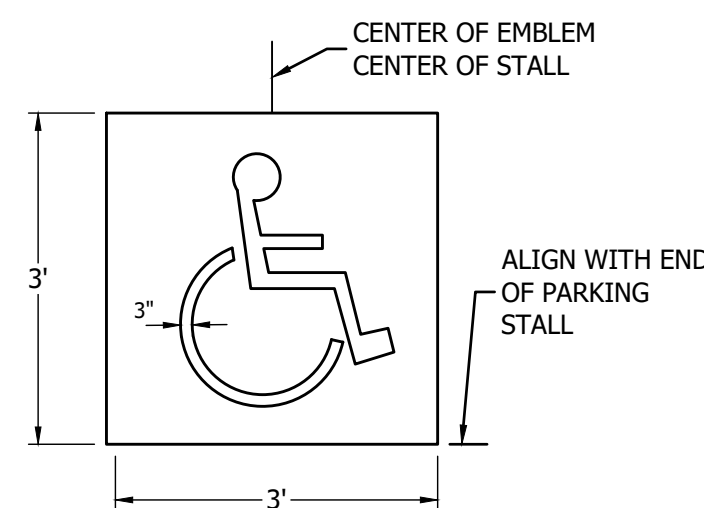
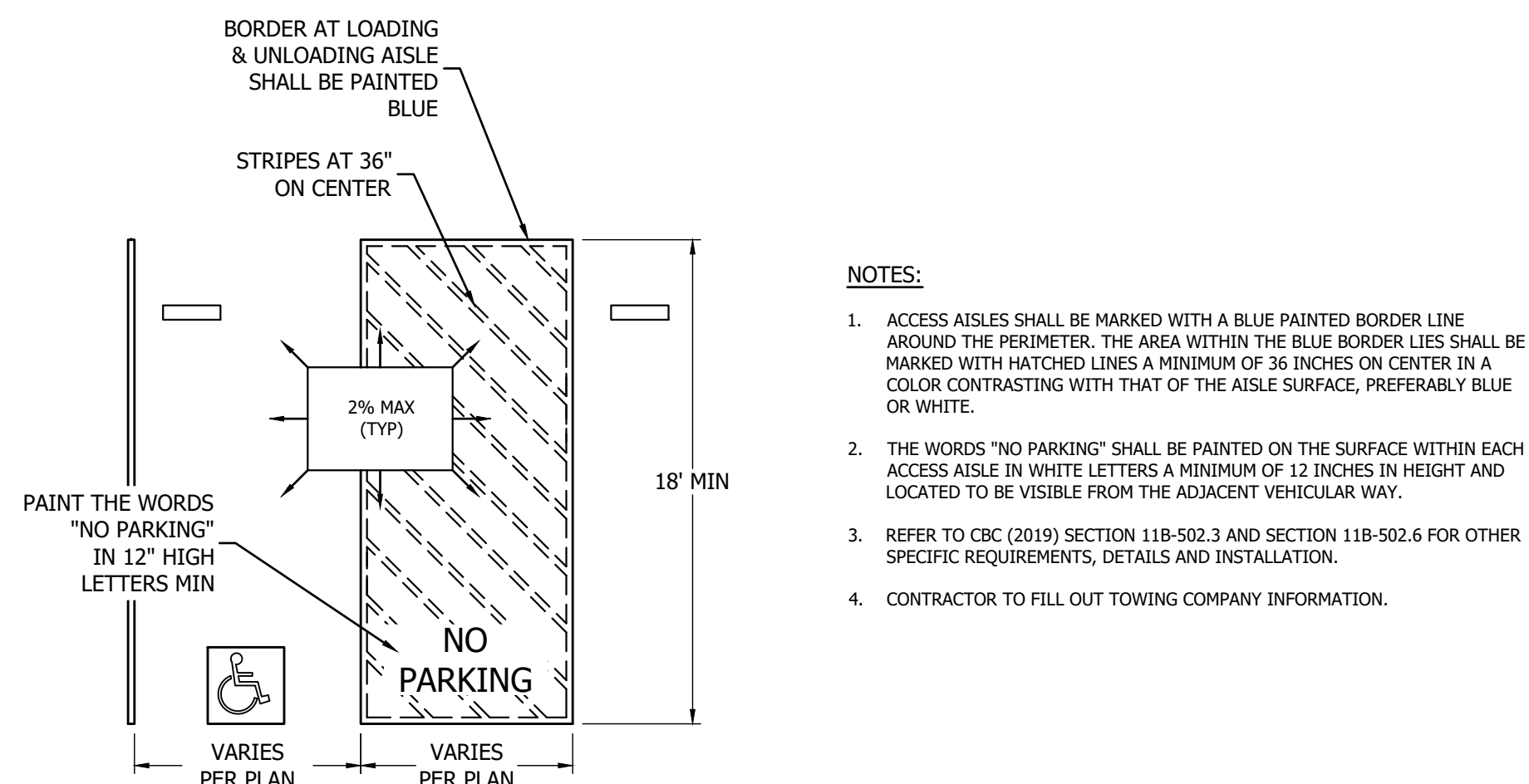
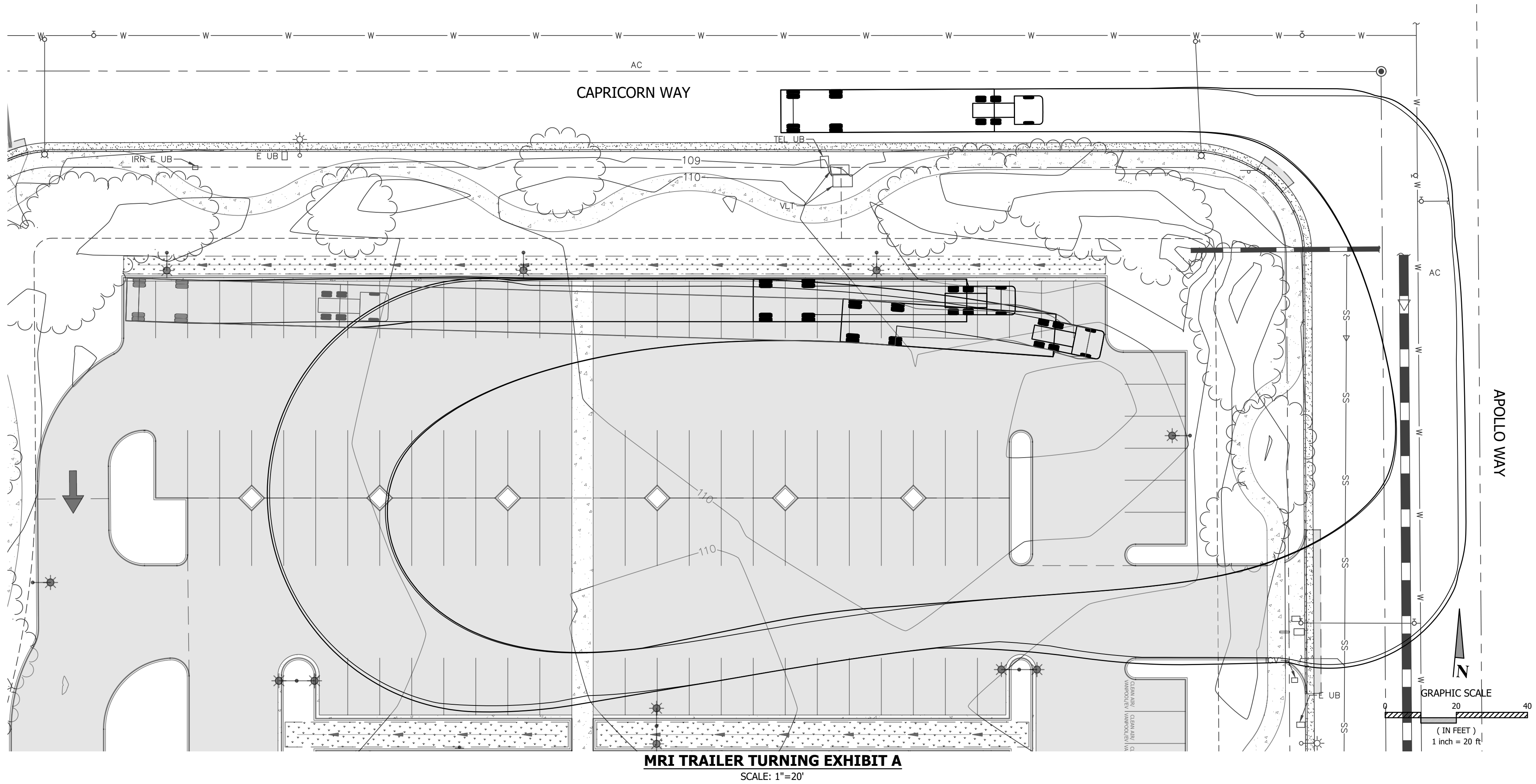


The Civil Site Plan Map illustrates the proposed layout for the MRI building and its associated infrastructure. The building is a long, rectangular structure with a central 'MRI CONCRETE PAD' (17.50' x 57.00', FS = 109.20) and an 'MRI TRAILER OUTLINE' to its left. The building is surrounded by various site improvements, including 'PROPOSED BOLLARD, TYP' and 'PREVIOUSLY APPROVED PRIVATE IMPROVEMENTS'. The map also shows 'PATIENT PARKING' areas, 'SITE POWER CONDUIT' options, and 'SITE TELECOM CONDUIT, BY OTHERS'. A 'GRAPHIC SCALE' (1 inch = 20 feet) and a north arrow are provided for reference. The map includes numerous elevation points (FS/ME) and dimensions, such as 109.01, 109.02, 109.07, 109.13, 109.20, 109.21, 109.37, 108.51, 108.94, 108.91, 108.92, 108.93, 108.94, 108.95, 108.96, 108.97, 108.98, 108.99, 109.00, 109.01, 109.02, 109.03, 109.04, 109.05, 109.06, 109.07, 109.08, 109.09, 109.10, 109.11, 109.12, 109.13, 109.14, 109.15, 109.16, 109.17, 109.18, 109.19, 109.20, 109.21, 109.22, 109.23, 109.24, 109.25, 109.26, 109.27, 109.28, 109.29, 109.30, 109.31, 109.32, 109.33, 109.34, 109.35, 109.36, 109.37, 109.38, 109.39, 109.40, 109.41, 109.42, 109.43, 109.44, 109.45, 109.46, 109.47, 109.48, 109.49, 109.50, 109.51, 109.52, 109.53, 109.54, 109.55, 109.56, 109.57, 109.58, 109.59, 109.60, 109.61, 109.62, 109.63, 109.64, 109.65, 109.66, 109.67, 109.68, 109.69, 109.70, 109.71, 109.72, 109.73, 109.74, 109.75, 109.76, 109.77, 109.78, 109.79, 109.80, 109.81, 109.82, 109.83, 109.84, 109.85, 109.86, 109.87, 109.88, 109.89, 109.90, 109.91, 109.92, 109.93, 109.94, 109.95, 109.96, 109.97, 109.98, 109.99, 110.00, 110.01, 110.02, 110.03, 110.04, 110.05, 110.06, 110.07, 110.08, 110.09, 110.10, 110.11, 110.12, 110.13, 110.14, 110.15, 110.16, 110.17, 110.18, 110.19, 110.20, 110.21, 110.22, 110.23, 110.24, 110.25, 110.26, 110.27, 110.28, 110.29, 110.30, 110.31, 110.32, 110.33, 110.34, 110.35, 110.36, 110.37, 110.38, 110.39, 110.40, 110.41, 110.42, 110.43, 110.44, 110.45, 110.46, 110.47, 110.48, 110.49, 110.50, 110.51, 110.52, 110.53, 110.54, 110.55, 110.56, 110.57, 110.58, 110.59, 110.60, 110.61, 110.62, 110.63, 110.64, 110.65, 110.66, 110.67, 110.68, 110.69, 110.70, 110.71, 110.72, 110.73, 110.74, 110.75, 110.76, 110.77, 110.78, 110.79, 110.80, 110.81, 110.82, 110.83, 110.84, 110.85, 110.86, 110.87, 110.88, 110.89, 110.90, 110.91, 110.92, 110.93, 110.94, 110.95, 110.96, 110.97, 110.98, 110.99, 111.00, 111.01, 111.02, 111.03, 111.04, 111.05, 111.06, 111.07, 111.08, 111.09, 111.10, 111.11, 111.12, 111.13, 111.14, 111.15, 111.16, 111.17, 111.18, 111.19, 111.20, 111.21, 111.22, 111.23, 111.24, 111.25, 111.26, 111.27, 111.28, 111.29, 111.30, 111.31, 111.32, 111.33, 111.34, 111.35, 111.36, 111.37, 111.38, 111.39, 111.40, 111.41, 111.42, 111.43, 111.44, 111.45, 111.46, 111.47, 111.48, 111.49, 111.50, 111.51, 111.52, 111.53, 111.54, 111.55, 111.56, 111.57, 111.58, 111.59, 111.60, 111.61, 111.62, 111.63, 111.64, 111.65, 111.66, 111.67, 111.68, 111.69, 111.70, 111.71, 111.72, 111.73, 111.74, 111.75, 111.76, 111.77, 111.78, 111.79, 111.80, 111.81, 111.82, 111.83, 111.84, 111.85, 111.86, 111.87, 111.88, 111.89, 111.90, 111.91, 111.92, 111.93, 111.94, 111.95, 111.96, 111.97, 111.98, 111.99, 112.00, 112.01, 112.02, 112.03, 112.04, 112.05, 112.06, 112.07, 112.08, 112.09, 112.10, 112.11, 112.12, 112.13, 112.14, 112.15, 112.16, 112.17, 112.18, 112.19, 112.20, 112.21, 112.22, 112.23, 112.24, 112.25, 112.26, 112.27, 112.28, 112.29, 112.30, 112.31, 112.32, 112.33, 112.34, 112.35, 112.36, 112.37, 112.38, 112.39, 112.40, 112.41, 112.42, 112.43, 112.44, 112.45, 112.46, 112.47, 112.48, 112.49, 112.50, 112.51, 112.52, 112.53, 112.54, 112.55, 112.56, 112.57, 112.58, 112.59, 112.60, 112.61, 112.62, 112.63, 112.64, 112.65, 112.66, 112.67, 112.68, 112.69, 112.70, 112.71, 112.72, 112.73, 112.74, 112.75, 112.76, 112.77, 112.78, 112.79, 112.80, 112.81, 112.82, 112.83, 112.84, 112.85, 112.86, 112.87, 112.88, 112.89, 112.90, 112.91, 112.92, 112.93, 112.94, 112.95, 112.96, 112.97, 112.98, 112.99, 113.00, 113.01, 113.02, 113.03, 113.04, 113.05, 113.06, 113.07, 113.08, 113.09, 113.10, 113.11, 113.12, 113.13, 113.14, 113.15, 113.16, 113.17, 113.18, 113.19, 113.20, 113.21, 113.22, 113.23, 113.24, 113.25, 113.26, 113.27, 113.28, 113.29, 113.30, 113.31, 113.32, 113.33, 113.34, 113.35, 113.36, 113.37, 113.38, 113.39, 113.40, 113.41, 113.42, 113.43, 113.44, 113.45, 113.46, 113.47, 113.48, 113.49, 113.50, 113.51, 113.52, 113.53, 113.54, 113.55, 113.56, 113.57, 113.58, 113.59, 113.60, 113.61, 113.62, 113.63, 113.64, 113.65, 113.66, 113.67,

AD	AREA DRAIN
AP	ASSESSOR'S PARCEL NUMBER
CL	CATCH BASIN
CL	CENTERLINE / CLASS
CY	CUBIC YARD
DI	DROP INLET
EX	EXISTING
EX or (E)	EXISTING
FD	FLOOR DRAIN
FG	FINISH GRADE
FL	FLOWLINE
FS	FINISHED SURFACE
FT	FOOT / FEET
GB	GRADE BREAK
GR	GRATE
HP	HIGH POINT
IG	INVERT GRADE
IN	INCH
INV	INVERT
L	LENGTH
LF	LINEAL FOOT/FEET
MAX	MAXIMUM
ME	MATCH EXISTING
MIN	MINIMUM
NO	NO
NTS	NOT TO SCALE
PL	PROPERTY LINE
S	SLOPE
SE	SQUARE FEET
TB	TOP OF BANK
TF	TYPICAL
UPR	UNDER PERAPARTE PERMIT
YD, YDS	YARD, YARDS


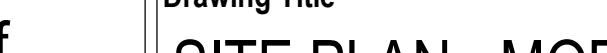
- ① MRI CONCRETE PAD, REFER TO STRUCTURAL FOR SPECIFICATIONS
- ② CONCRETE PAD MUST NOT EXCEED 0.125" DEVIATION IN 10.00'
- ③ ADA PATH OF TRAVEL TO ADA LIFT. ADA TRUNCATED DOMES AND TURNING LANDING TO BE PROVIDED FOR ACCESS FROM SOUTHERLY DIRECTION
- ④ REMOVE EXISTING WHITE PARKING STRIPE PAINT AND REPLACE WITH NEW 4-INCH WHITE STRIPES AS INDICATED ON PLAN

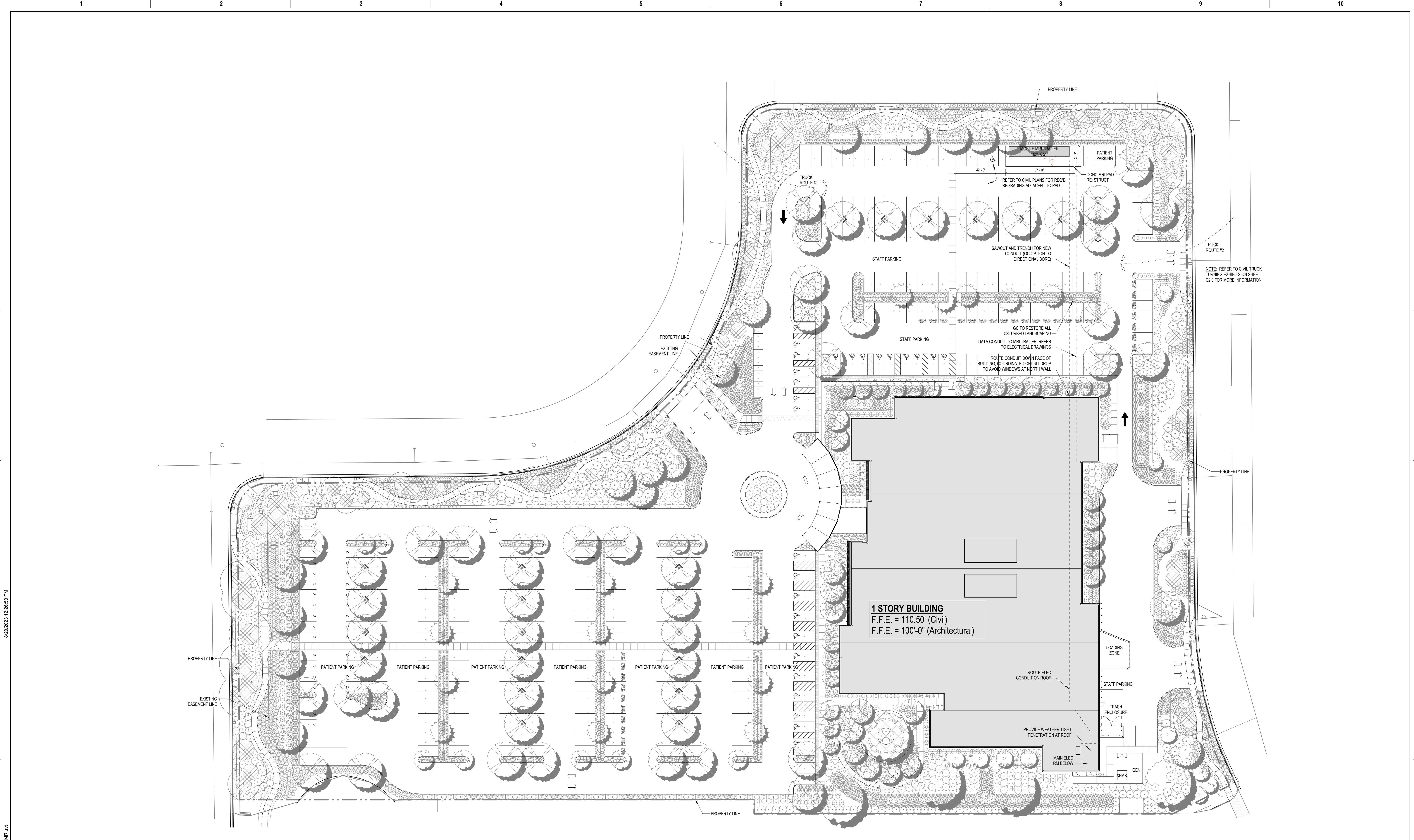
C1.0



ITEM	NO.	DATE	DESCRIPTION	CONSULTANT	ARCHITECT/ENGINEER OF RECORD	STAMP	Office of Construction and Facilities Management	Drawing Title	Phase	Project Title	Project Number
				BC ENGINEERING GROUP, INC. CIVIL ENGINEERING & LAND PLANNING www.bcengineeringgroup.com Phone: 707.542.4321 SANTA ROSA OFFICE: 418 B Street, Third Floor, Santa Rosa CA 95401 UKIAH OFFICE: 603 S. State Street, Ukiah CA 95482	A/E: LANTZ-BOGGIO Architects & Interior Designers 5650 DTC Pkwy. Suite 200 Englewood CO 80111 Ph: 303.773.0436	REGISTERED PROFESSIONAL ANDREW S. BOGGIO 2016 CIVIL STATE OF CALIFORNIA	U.S. Department of Veterans Affairs	TURNING EXHIBITS & DETAILS - MOBILE MRI TRAILER	ISSUED FOR 100% VA REVIEW	SANTA ROSA COMMUNITY BASED OUTPATIENT CLINIC	1143-18
								Approved:		Location SANTA ROSA CALIFORNIA	Building Number
										Issue Date 19 APRIL 2023	Drawing Number C2.0
										Checked AVillars	Drawn TLarsen

VA FORM 08 - 6231									
1	2	3	4	5	6	7	8	9	10

ITEM	NO.	DATE	DESCRIPTION	CONSULTANT	ARCHITECT/ENGINEER OF RECORD	STAMP	Office of Construction and Facilities Management	Drawing Title	Phase	Project Title	Project Number			
				<div><p>MARTIN/MARTIN CONSULTING ENGINEERS</p><p>900 Larkspur Landing Circle, Suite 201 Larkspur, California 94939 415.814.0030 martinmartin.com</p></div>	<div><p>A/E:</p><p>LANTZ-BOGGIO Architects & Interior Designers</p><p>5650 DTC Pkwy. Suite 200 Englewood CO 80111 Ph: 303.773.0436</p></div>	<div></div>	<div><div><div>VA</div><div>U.S. Department of Veterans Affairs</div></div></div>	SITE PLAN - MOBILE MRI TRAILER	ISSUED FOR 100% VA REVIEW	SANTA ROSA COMMUNITY BASED Santa Rosa MRI Trailer	RLP No. _____			
													Building Number	
								Approved:		SANTA ROSA CALIFORNIA	Drawing Number			
									MRI CONCRETE PAD	Issue Date	Checked	Drawn	S1.10	
										19 APRIL 2023	EG	MA		



1 ARCHITECTURAL SITE PLAN
1" = 30'-0"

ITEM	NO.	DATE	DESCRIPTION	CONSULTANT	ARCHITECT/ENGINEER OF RECORD	STAMP	Drawing Title	Phase	Project Title	Project Number
					A/E: LANTZ-BOGGIO Architects & Interior Designers 5650 DTC Pkwy. Suite 200 Englewood CO 80111 Ph: 303.773.0436	01/31/2023	SITE PLAN - MOBILE MRI TRAILER	ISSUED FOR 100% VA REVIEW	Santa Rosa MRI Trailer	
							Approved:		Location SANTA ROSA CALIFORNIA	Drawing Number
									Issue Date 19 APRIL 2023	A-110
									Checked DMiller	Drawn TDepew

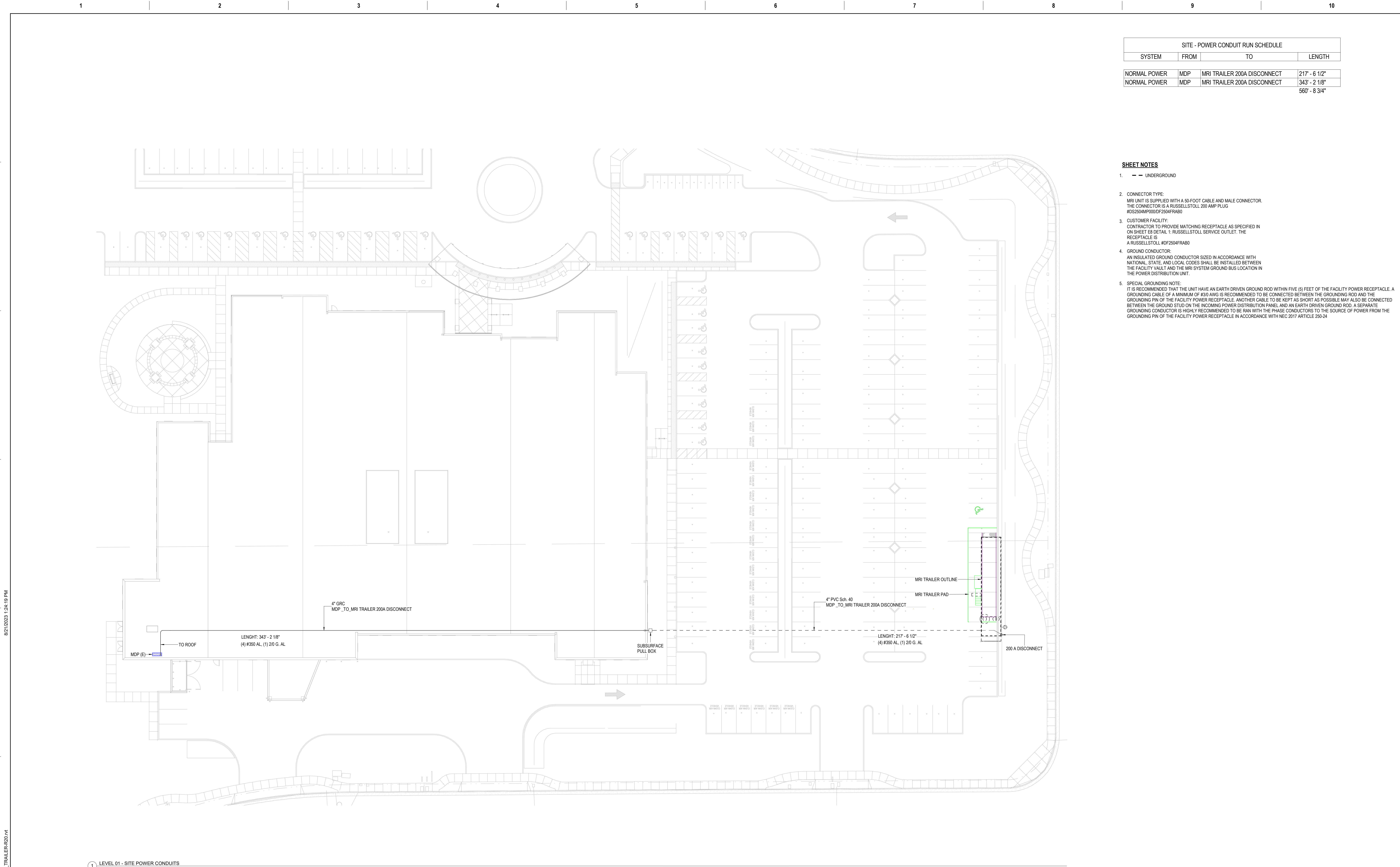
SCOPE OF WORK

NATIONAL ELECTRICAL CODE (NEC) 2019 (2019 CEC)
NATIONAL FIRE PROTECTION ASSOCIATION (NFPA)
AMERICANS WITH DISABILITIES ACT (ADA)

B. ALL SPLICE CONNECTORS SHALL BE 3M SCOTCHLOK OR EQUAL

A. IT SHALL BE THE RESPONSIBILITY OF THIS CONTRACTOR TO OBTAIN REQUIREMENT AND APPROVAL FROM LOCAL CODE AUTHORITIES. ON EMERGENCY AND EXIT LIGHTING

BIM 360://ENGXXX - Santa Rosa MRI Trailer/Heli-VASR MRI TRAILER-R20.m



SITE - POWER CONDUIT RUN SCHEDULE			
SYSTEM	FROM	TO	LENGTH
NORMAL POWER	MDP	MRI TRAILER 200A DISCONNECT	217' - 6 1/2"
NORMAL POWER	MDP	MRI TRAILER 200A DISCONNECT	343' - 2 1/8"
560' - 8 3/4"			


- SHEET NOTES**
1. --- UNDERGROUND
 2. CONNECTOR TYPE:
MRI UNIT IS SUPPLIED WITH A 50-FOOT CABLE AND MALE CONNECTOR.
THE CONNECTOR IS A RUSSELLSTOLL 200 AMP PLUG
#DS2504MP000DF2504FRAB0
 3. CUSTOMER FACILITY:
CONTRACTOR TO PROVIDE MATCHING RECEPTACLE AS SPECIFIED IN
ON SHEET ES DETAIL 1. RUSSELLSTOLL SERVICE OUTLET. THE
RECEPTACLE IS
A RUSSELLSTOLL #DF2504FRAB0
 4. GROUND CONDUCTOR:
AN INSULATED GROUND CONDUCTOR SIZED IN ACCORDANCE WITH
NATIONAL, STATE, AND LOCAL CODES SHALL BE INSTALLED BETWEEN
THE FACILITY VAULT AND THE MRI SYSTEM GROUND BUS LOCATION IN
THE POWER DISTRIBUTION UNIT.
 5. SPECIAL GROUNDING NOTE:
IT IS RECOMMENDED THAT THE UNIT HAVE AN EARTH DRIVEN GROUND ROD WITHIN FIVE (5) FEET OF THE FACILITY POWER RECEPTACLE. A
GROUNDING CABLE OF A MINIMUM OF #3/8 AWG IS RECOMMENDED TO BE CONNECTED BETWEEN THE GROUNDING ROD AND THE
GROUNDING PIN OF THE FACILITY POWER RECEPTACLE. ANOTHER CABLE TO BE KEPT AS SHORT AS POSSIBLE MAY ALSO BE CONNECTED
BETWEEN THE GROUND STUD ON THE INCOMING POWER DISTRIBUTION PANEL AND AN EARTH DRIVEN GROUND ROD. A SEPARATE
GROUNDING CONDUCTOR IS HIGHLY RECOMMENDED TO BE RAN WITH THE PHASE CONDUCTORS TO THE SOURCE OF POWER FROM THE
GROUNDING PIN OF THE FACILITY POWER RECEPTACLE IN ACCORDANCE WITH NEC 2017 ARTICLE 250-24

8/21/2023 12:41:19 PM
E:\360\VENGOXX - Santa Rosa MRI Trailer\HE-VASR_MRI TRAILER.R20.rvt

1 LEVEL 01 - SITE POWER CONDUITS
3/64" = 1'-0"

ITEM	NO.	DATE	DESCRIPTION
1	1	4/19/23	ELECTRICAL PERMIT SET


CONSULTANT



HELIX ELECTRIC
CONSTRUCTORS • ENGINEERS
6795 Randaver Drive • San Diego, CA 92121
PH: (619) 555-0055 FAX: (619) 555-0757


ARCHITECT/ENGINEER OF RECORD

A/E:



LANTZ-BOGGIO
Architects & Interior Designers
5650 DTC Pkwy. | Suite 200 | Englewood | CO 80111 | Ph: 303.773.0436

STAMP



Office of
Construction
and Facilities
Management

VA U.S. Department
of Veterans Affairs

Drawing Title

SITE - POWER CONDUITS

Approved:

Phase

ISSUED FOR 100% VA REVIEW

Project Title

Santa Rosa MRI Trailer

Location

SANTA ROSA CALIFORNIA

Issue Date

4/19/23

Checked

ES

Drawn

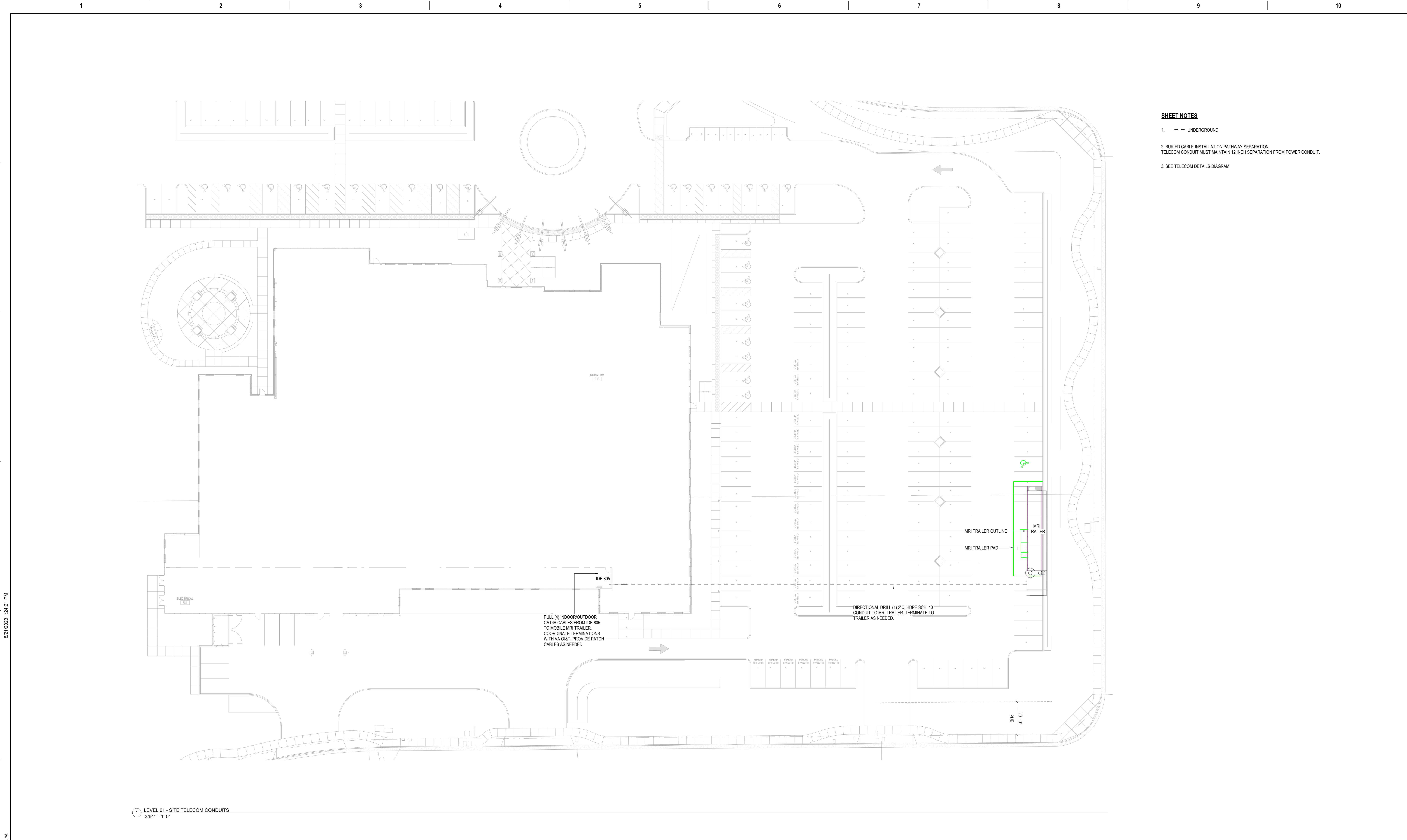
AN

Project Number




Building Number

Drawing Number

E1.1



- SHEET NOTES**
1. — — UNDERGROUND
 2. BURIED CABLE INSTALLATION PATHWAY SEPARATION
TELECOM CONDUIT MUST MAINTAIN 12 INCH SEPARATION FROM POWER CONDUIT.
 3. SEE TELECOM DETAILS DIAGRAM.

<table><tr><th>ITEM</th><th>NO.</th><th>DATE</th><th>DESCRIPTION</th></tr><tr><td>1</td><td>1</td><td>4/19/23</td><td>ELECTRICAL PERMIT SET</td></tr><tr><td> </td><td> </td><td> </td><td> </td></tr><tr><td> </td><td> </td><td> </td><td> </td></tr><tr><td> </td><td> </td><td> </td><td> </td></tr><tr><td> </td><td> </td><td> </td><td> </td></tr><tr><td> </td><td> </td><td> </td><td> </td></tr></table>				ITEM	NO.	DATE	DESCRIPTION	1	1	4/19/23	ELECTRICAL PERMIT SET																					<div>CONSULTANT</div> <div><div>HELIX ELECTRIC CONSTRUCTORS • ENGINEERS 6795 Flamingo Ave. Suite 200 San Diego, CA 92121 PH: (619) 555-0051 FAX: (619) 555-0757</div></div>		<div>ARCHITECT/ENGINEER OF RECORD</div> <div>A/E: <div>LANTZ-BOGGIO Architects & Interior Designers 5660 DTC Pkwy. Suite 200 Englewood CO 80111 Ph: 303.773.0436</div></div>		<div>STAMP</div> <div></div>	<div>Office of Construction and Facilities Management</div> <div> U.S. Department of Veterans Affairs</div>	<div>Drawing Title</div> <div>SITE - TELECOM CONDUITS</div> <div>Approved:</div>	<div>Phase</div> <div>ISSUED FOR 100% VA REVIEW</div>	<div>Project Title</div> <div>Santa Rosa MRI Trailer</div> <div>Location</div> <div>SANTA ROSA CALIFORNIA</div> <div>Issue Date</div> <div>4/19/23</div> <div>Checked</div> <div>Checker</div> <div>Drawn</div> <div>Author</div>	<div>Project Number</div> <div>Building Number</div> <div>Drawing Number</div> <div>E1.2</div>
ITEM	NO.	DATE	DESCRIPTION																																						
1	1	4/19/23	ELECTRICAL PERMIT SET																																						

8/21/2025 12:42:1 PM
E:\BIM\360\VE\G0000 - Santa Rosa MRI Trailer\HE\VA\SE_MRI TRAILER.RVT

1 SINGLE LINE DIAGRAMS

[illegible]

ELEVATOR		hp	AMPS	kW
Included in Existing Load				0.0
LARGEST MOTOR @25%		hp	AMPS	kW
Included in Existing Load				0.0

SUB-TOTAL		AMPS	kW
		136	113.0
ADDITIONAL LOADS		AMPS	kW
EXISTING LOAD BASED ON POWER BILL 06/2022 @80%pf		1037	861.7
		0	0.0

Service size is adequate for main switchgear rating

All Amperage is rounded up to the nearest Amp

TOTAL CONNECTED	1173	974.8
------------------------	-------------	--------------

LOAD STUDY
NTS

Main Switchboard: MDP (E)		
Location:	ELECTRICAL 884	Volts: 277/480 Wye
Supply From:	SE SWBD	Phases: 3
Mounting:	SURFACED MOUNTED	Wires: 4
Enclosure:	NEMA 1	A.I.C. Rating: 65,000 AIC
		Mains Type: MCB
		Mains Rating: 2500 A
		MCB Rating: 2500 A

CKT	Circuit Description	# of Poles	Frame Size	Trip Rating	Load	Remarks
1	HB	3	225 A	225 A	20 kVA	*
2	EDP	3	225 A	225 A	116.3 kVA	*
3	WHEQ	3	400 A	400 A	107.4 kVA	*
4	T2	3	175 A	175 A	60.10 kVA	*
5	T1	3	175 A	175 A	52.09 kVA	*
6	T3	3	125 A	125 A	37.83 kVA	*
7	T3	3	175 A	175 A	61.97 kVA	*
8	T4	3	175 A	175 A	60.97 kVA	*
9	RTU2	3	300 A	300 A	165 kVA	*
10	RADIOGRAPHIC UNIT	3	250 A	250 A	125 kVA	*
11	RADIOGRAPHIC UNIT (CT)	3	250 A	250 A*	200 kVA	*
12	RTU1	3	300 A	300 A	165 kVA	*
13	MRI TRAILER	3	200 A	200 A	113 kVA	
14						
15						
16						
17						
18						
19						
20						
21						
Total Conn Load:					1284.49 kVA	
Total Amps:					1545.71 A	

Legend:

Load Classification	Connected Load	Demand Factor	Estimated Demand	Panel Totals
LIGHTING LOAD	28.0 kVA	1.25	35.0 kVA	
RECEPTACLE LOAD	315.36 kVA	NEC	162.88 kVA	Total Conn. Load: 1284.49 kVA
EVAC. LOAD	434.8 kVA	1.00	434.8 kVA	Total Est. Demand: 1251.88 kVA
EQUIPMENT LOAD	506.4 kVA	1.00	506.4 kVA	Total Conn. Current:
				Total Est. Demand Current: 1506.47 A
MRI TRAILER	113 kVA	1.00	113 kVA	

Notes

SHEET NOTES

1. IF MDP SCHEDULE CIRCUIT NOTED WITH AN * * * REUSE

2. FOR MDP SCHEDULE REFER TO BUILDING AS BUILT DRAWINGS.

3. EXISTING SWITCHBOARD MDP MANUFACTURED BY SCHNEIDER
ELECTRIC. FACTORY ORDER#: 43537136. CONSULT SCHNEIDER

ELECTRIC REPRESENTATIVE FOR APPROPRIATE BREAKER TYPE AND STYLE

4. FOR FUSE DISCONNECT DETAILS REFER TO SHEET E8 POWER

DETAILS:

Short-Circuit Calculations

The following calculations are based on the "Point-by Point" method where:

$$I_{sc} = I_{sc}(\text{source}) \times M \quad M = 1/(1+f)$$

$$f = \underline{1.}$$

$$f = \frac{1.732 \times L \times I}{C \times E}$$

3φ

3φ XFMR:

IP(sca)

$$)= \frac{IP(sca) \times V_p \times 10^3}{100,000 \times KVA}$$

Z IS

$$S(sca) = \frac{V_p \times M \times IS(sca)}{V_s}$$

Vdrop = 1000)
VD % = Vdrop

0.000) / (11 x

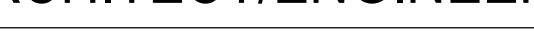

n = number of parallel runs

--	--	--	--

Distance	LOAD	Vdrop	V
----------	------	-------	---

Fault Point	Panel Transformer	Source (Fault Point)	Source I (amps)	M, NM AM, AN	(n)	Wire/Bus Size	'C' value	E (volts)	L (length)	X'FMR KVA	X'FMR Z	f	M	Isc	Isc_Motor	Isc_Total	CU,AL CUS,ALR C9P,ASP,ASRP	Phase	Resistance 'R' value	LOAD AMPS	Vdrop Volts	VD %
1	MDP							480						65000							10.15700	
2	MRI TRAILER	1	65000	NM	1	SET OF 350 KCMIL	16813	480	560			7.812	0.113	7376			AL	0.866	0.0770	136	2	2.116042

SCCR $12' = 1'-0"$

ITEM	NO.	DATE	DESCRIPTION	CONSULTANT	ARCHITECT/ENGINEER OF RECORD	STAMP	Office of Construction and Facilities Management	Drawing Title	Phase	Project Title	Project Number
1	1	4/19/23	ELECTRICAL PERMIT SET	 HELIX ELECTRIC CONSTRUCTORS • ENGINEERS <small>4770 Riverwood Drive San Diego, CA 92121 PH: (606) 550-0050 FAX: (606) 550-0757</small>	A/E: LANTZ-BOGGIO Architects & Interior Designers <small>5650 OTC Pkwy Suite 200 Englewood CO 80111 Ph: 303.773.0436</small>		VA U.S. Department of Veterans Affairs	PRELIMINARY SINGLE LINE DIAGRAM	ISSUED FOR 100% VA REVIEW	Santa Rosa MRI Trailer	
								Approved:		Location SANTA ROSA CALIFORNIA	Building Number
										Issue Date 4/19/23	Drawing Number E4
										Checked ES	Drawn ES

12345678910

A

B

C

D

E

F

EXISTING IDF 805

EXISTING LT RACK

VERACITY 8-PORT EXTENDER
VLS-SL-B8

CAT6A PATCH CABLE

POWER SUPPLY
VPSU-POE

(6) CAT6A INDOOR/OUTDOOR CABLES
(INCLUDES 2 SPARE)

MRI TRAILER BY OTHERS

VERACITY ETHERNET DEVICE

VLS-1P-C

VLS-1P-C

VLS-1P-C

VLS-1P-C

NOTES:

1. 8-PORT EXTENDER REQUIRES 120V POWER. UTILIZE EXISTING WALL OUTLET FOR POWER.

2. INTENT IS TO PROVIDE A FULLY FUNCTIONAL AND TURNKEY TELECOM INFRASTRUCTURE AND EQUIPMENT SOLUTION TO SERVICE THE MOBILE MRI TRAILER.

3. PROVIDE ALL NECESSARY ANCILLARY ITEMS AS NECESSARY TO FULFILL THE DESIGN INTENT.

4. PROVIDE ADDITIONAL PATCH PANEL IF NO AVAILABLE PATCH CORD POSITIONS ARE AVAILABLE.

5. COORDINATE WITH VA IT FOR PATCH CABLE AND PATCH PANEL POSITIONING UTILIZE EXISTING IDF 805 CABLE TRAY AND AVAILABLE LADDER RACK TO PROVIDE AN ORGANIZED AND PROFESSIONAL INSTALLATION.

6. PROVIDE DITEX MRX-POE (OR EQUAL) SURGE PROTECTION DEVICE FOR ALL CABLES (ONE DEVICE AT EACH HEAD AND TAIL END).

1 TELECOM DIAGRAM

NTS

ITEM	NO.	DATE	DESCRIPTION
1	1	4/19/23	ELECTRICAL PERMIT SET

CONSULTANT

HIE

HELIX ELECTRIC

CONSTRUCTORS • ENGINEERS

4795 Randaver Drive

San Diego, CA 92121

PH: (619) 535-0055

FAX: (619) 535-0757

ARCHITECT/ENGINEER OF RECORD

A/E:

LANTZ-BOGGIO

Architects & Interior Designers

5650 DTC Pkwy. | Suite 200 | Englewood | CO 80111 | Ph: 303.773.0436

STAMP

Professional Engineer

JOSEPH BOCCIA

E 23951

ELECTRICAL

STATE OF CALIFORNIA

Office of Construction and Facilities Management

VA U.S. Department of Veterans Affairs

Drawing Title

TELECOM DETAILS

Approved:

Phase

ISSUED FOR 100% VA REVIEW

Project Title

Santa Rosa MRI Trailer

Location

SANTA ROSA CALIFORNIA

Issue Date

4/19/23

Checked

Checker

Drawn

Author

Project Number

Building Number

Drawing Number

E6

VA FORM 08 - 6231

12345678910

