

LUXE PLACES

INTERNATIONAL REALTY



NEXT TO THE PARK, BUILT WITH HEART – SOUTHWEST SANTA ROSA LIVING AT ITS BEST

2513 SILVER SPUR DR, SANTA ROSA, CA 95407

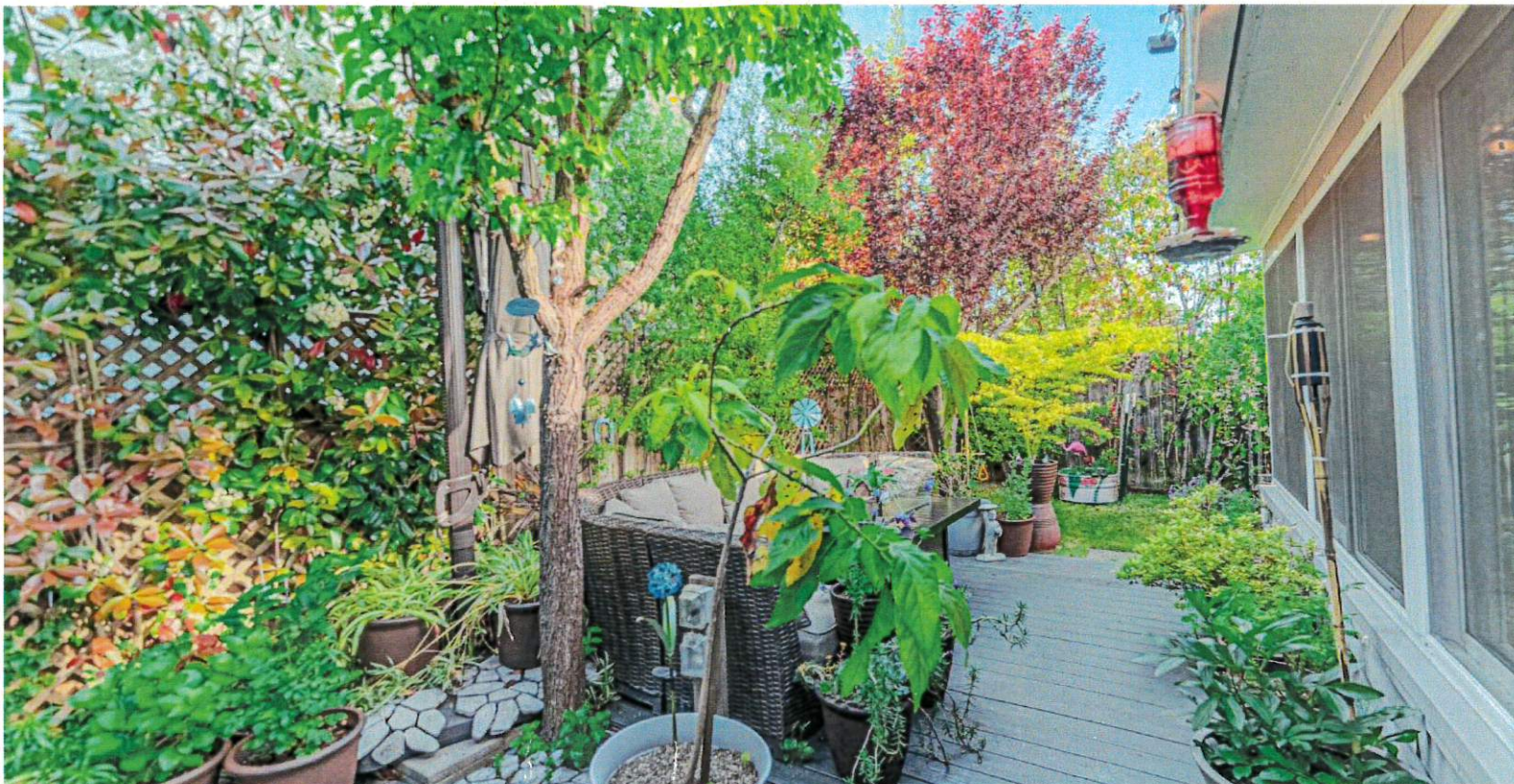
Located in Southwest Santa Rosa, directly across from Southwest Community Park, this charming 3-bedroom, 2-bath home offers the perfect balance of location and livability. Built in 2002 and thoughtfully maintained, the 1,346 sq ft two-story residence is filled with custom craftsmanship and inviting warmth.

Step inside to discover handcrafted fixtures, a beautifully updated kitchen with quarter-sawn red oak cabinetry, and sleek granite countertops. The main level is elevated by stunning curly koa Pergo flooring, creating a rich and distinctive feel throughout the living areas.

Enjoy year-round comfort with central air conditioning and fully owned solar panels. The home also includes an attached 1-car garage and sits on a 2,826 sq ft lot that's professionally landscaped front and back. The backyard is a tranquil retreat with mature trees and climbing greenery that provide natural privacy and a peaceful ambiance.

A sunlit, cozy sunroom with marble tile flooring adds a versatile space ideal for work or relaxation. This home blends thoughtful updates, natural beauty, and a welcoming neighborhood setting — it's ready for you to make it your own.





WWW.2513SILVERSPURDR.COM



Aquileo Leal
 REALTOR® | DRE#02223182
 707.392.3888
aquileoleal.realestate@gmail.com
buyinsonomacounty.com

LUXE PLACES
 INTERNATIONAL REALTY
 737 4th Street
 Santa Rosa, CA 95404