

# CHOICE CYCLE XI FINAL EVALUATION

**Miles Burgin**

*Research and Program Coordinator  
Santa Rosa Violence Prevention Partnership*

**Julie Burr**

*Project Manager  
Applied Survey Research*



---

**THE** SANTA ROSA  
VIOLENCE  
PREVENTION  
**PARTNERSHIP**

---

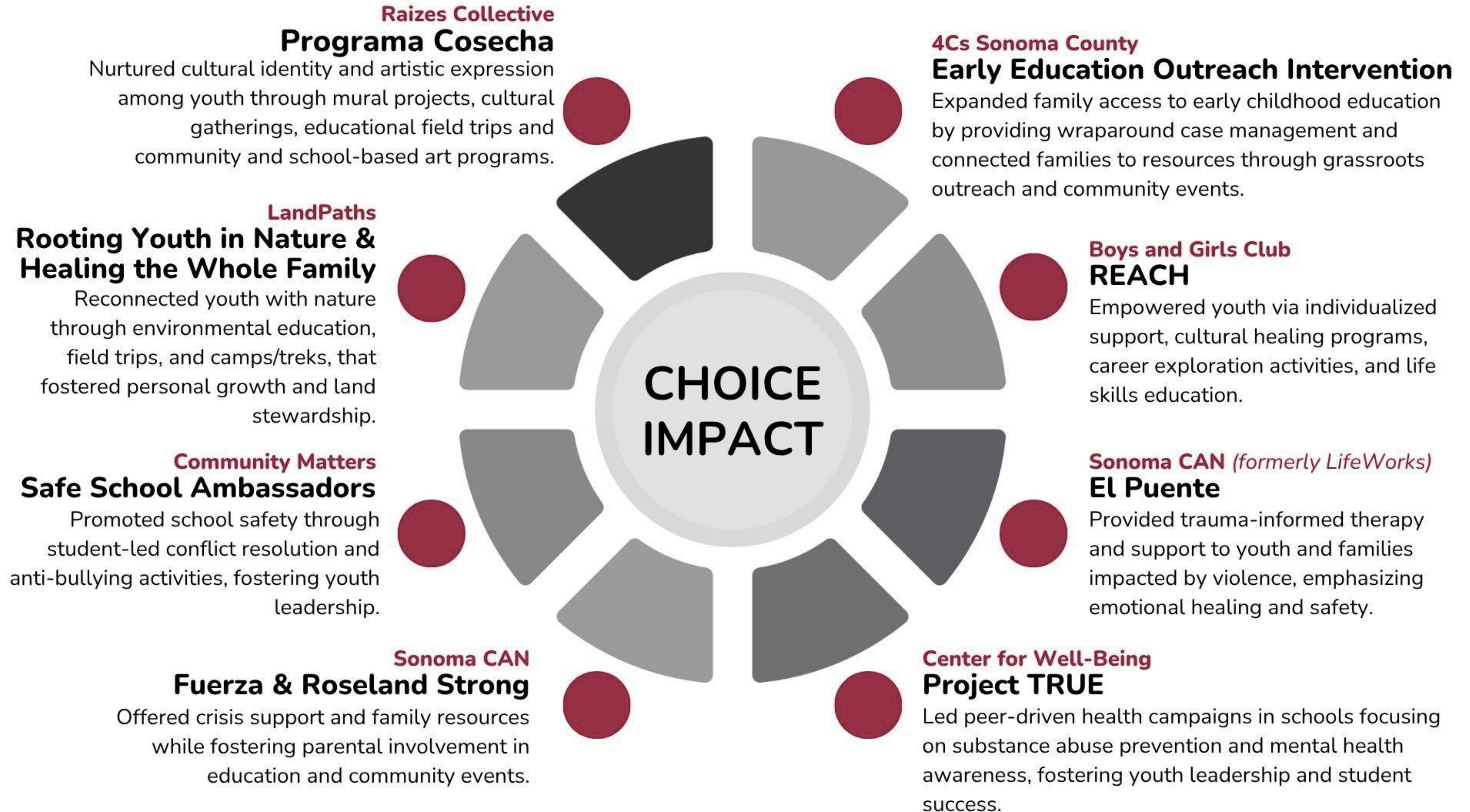


# BACKGROUND

- CHOICE Cycle XI ran from July 1, 2022 to December 31, 2024
- Granted \$1.875m of PSAP (Measure O) funds over two and a half years to eight community-based organizations in three categories:
  - Street outreach, intervention, and mediation
    - REACH - Boys & Girls Clubs of Sonoma-Marin
    - El Puente - Lifeworks of Sonoma County (Sonoma CAN)
  - School engagement and truancy prevention
    - Project T.R.U.E - Center for Well Being
    - Roseland Strong - CAP Sonoma (Sonoma CAN)
    - Safe School Ambassadors - Community Matters
    - Programa Cosecha - Raizes Collective
  - School readiness
    - Early Education Outreach Intervention Program - 4Cs Sonoma County
    - Rooting Youth in Nature - LandPaths
- Applied Survey Research was contracted to conduct evaluation using a Results Based Accountability (RBA) framework



# FUNDED PROGRAMS



# KEY PROGRAM THEMES

- **Youth Empowerment and Leadership**
  - Programs like Project TRUE, Safe School Ambassadors, and Programa Cosecha elevated youth voices and built confidence, civic engagement and leadership skills
- **Family Engagement and Wraparound Support**
  - Multiple programs, such as Early Education Outreach Intervention and El Puente, addressed social determinants of health by connecting families with case management and services such as childcare, education, mental health, food, and housing services
- **Culturally Responsive Programming**
  - All grantees delivered community-rooted services, honoring participants' traditions and values, delivered in familiar locations, with food, art, and language accessibility that reflected participants' backgrounds.
- **Trauma-Informed, Healing-Centered Approaches**
  - Programs like El Puente provided therapeutic services that supported trauma recovery, family healing, and reduction in high-risk behaviors, while nature-based and arts-based healing were emphasized by Rooting Youth in Nature and Programa Cosecha.

# COMMUNITY REACH AND OUTCOMES

- **CHOICE-funded programs reached over 16,700 community members and provided more than 53,000 hours of service, with broad engagement across race, ethnicity, risk level, and neighborhood**

<b>Early Education Outreach</b>	<b>88%</b> of clients who requested childcare were enrolled
<b>REACH</b>	<b>98%</b> of youth did not incur new criminal charges
<b>El Puente</b>	<b>83%</b> of participants reduced trauma and high-risk behaviors
<b>Project TRUE</b>	<b>98%</b> of youth leaders increased knowledge about alcohol, tobacco, and drugs
<b>Fuerza / Roseland Strong</b>	<b>69%</b> of participants reported increased school attendance
<b>Safe School Ambassadors</b>	<b>94%</b> of participants felt more connected to their school
<b>Rooting Youth in Nature</b>	<b>73%</b> of students reported a positive attitude about time outdoors
<b>Programa Cosecha</b>	<b>76%</b> of students learned at least one tool for self-regulation



# NAVIGATING CHALLENGES

- Common barriers facing grantees included:
  - Staffing shortages
  - Transportation and access issues
  - Inconsistent youth participation
  - Lack of available childcare
  - Limited culturally-relevant behavioral health services
- Programs adapted by:
  - Expanding outreach
  - Partnering with schools
  - Strengthening partnerships with each other to better support participants
  - Adjusting programming to meet changing needs

*Cycle XI CHOICE grantees demonstrated a shared commitment to empowering youth, strengthening families, and fostering safe communities. Through collaborative, culturally grounded, and trauma-informed approaches, they delivered vital services and promoted healing and resilience. Despite systemic challenges, their efforts reached high-need areas and diverse populations, generating measurable benefits in safety, connectedness, and individual well-being. The findings from Cycle XI show that community-based solutions are essential to preventing violence and nurturing thriving youth.*

# NEXT STEPS: LOOKING AHEAD TO CYCLE XII

Building on the lessons and successes of Cycle XI, the CHOICE Grant Program and Violence Prevention Partnership have aligned Cycle XII (2025–2028) with a new five-year strategic plan that expands impact and sharpens focus:

- **Updated Strategic Focus Areas**

- Cycle XII programs are aligned to the 2023-2028 Strategic Plan and cover four core service categories
  - Workforce Development (e.g., job readiness, vocational training)
  - Reentry and Diversion (e.g., cognitive skills, restorative justice)
  - Whole Family Support (e.g., therapy, system navigation)
  - Pro-Social Activities (e.g., outdoor education, youth engagement)

- **Focus on Equity and High-Risk Youth**

- CHOICE is continuing to prioritize youth ages 0-24, particularly those who are at-risk, high-risk, gang-impacted, or gang-intentional, or those living in Equity Priority Areas.

- **Enhanced Performance Tracking**

- The evaluation framework will continue to use RBA, with refined outcome measures including job attainment, reduced recidivism, improved family functioning, and increased sense of belonging

- **Long-Term Vision**

- The CHOICE Grant Program continues to evolve as a model of shared responsibility - one that uplifts youth, strengthens families, and creates safer, more connected communities

# QUESTIONS

**Questions?**