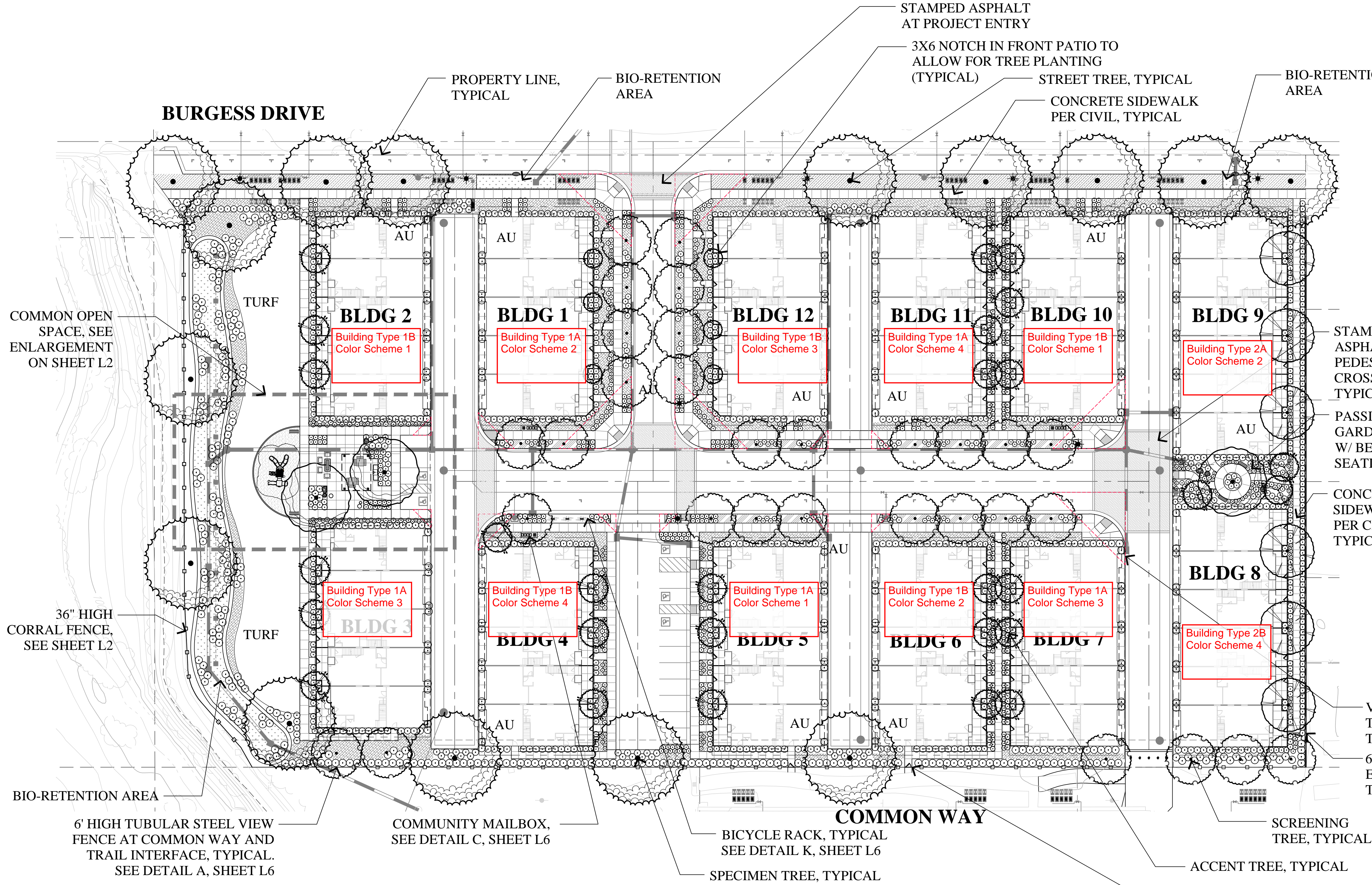




RECEIVED

By Sachnoor Bisla at 9:27 am, Apr 16, 2025



PROPOSED TREE PALETTE

BOTANICAL NAME	COMMON NAME	HEIGHT / SPREAD	SIZE	WATER USE
SPECIMEN TREE				
ACER F. 'A.B.'	AUTUMN BLAZE MAPLE	50'/40'	15 GALLON	MEDIUM
SCREENING TREE				
LAURUS N. 'SARATOGA'	SWEET BAY	30'/30'	15 GALLON	LOW
TRISTANIA LAURINA 'ELEGANT'	WATER GUM	40'/20'	15 GALLON	LOW
STREET TREES				
PISTACHIA CHINENSIS	CHINESE PISTACHE	30'-60'/30'-60'	15 GALLON	LOW
** QUERCUS LOBATA	VALLEY OAK	60'-100'/50'	15 GALLON	LOW
ACCENT TREES				
** CERCIS OCCIDENTALIS	WESTERN REDBUD	15'/15'	15 GALLON	LOW
LAGERSTROEMIA F. 'MUSKOGEE'	GRAPE MYRTLE	20'/15'	15 GALLON	LOW
** NATIVE PLANT SPECIES				

CONCEPTUAL LANDSCAPE STATEMENT

REGIONAL AND MICRO-CLIMATE CONDITIONS, SOLAR ORIENTATION AND SOIL CONDITIONS WILL BE TAKEN INTO ACCOUNT WITH REGARDS TO PLANT SELECTION AND PLACEMENT. THE PLANT PALETTE PROVIDES MANY PLANTS WITH VARYING GROWTH HABITS, PREFERENCES AND TOLERANCES, SO SELECTION OF JUST THE RIGHT PLANT SHOULD NOT BE DIFFICULT. A HIGH PERCENTAGE OF PLANTS SELECTED WILL BE DROUGHT-TOLERANT AND APPROPRIATE FOR THE CLIMATE. THIS PALETTE, ALONG WITH A DRIP IRRIGATION SYSTEM WILL CONSERVE WATER WITHIN THE PROJECT.

BY SPECIFYING PLANTS WHICH REQUIRE LITTLE TO NO PRUNING, THE GREEN WASTE WILL BE REDUCED. PLANTS SELECTED WILL COMPLEMENT THE ARCHITECTURE AND THE OVERALL VISION OF THE STONEBRIDGE COMMUNITY. THE PLANT PALETTE WAS DERIVED FROM THE RECOMMENDED PLANT LIST ALONG WITH OTHERS THAT FIT THE DESIGN AESTHETIC.

ENTRYWAYS AND PICTURE WINDOWS WILL BE FRAMED BY SPECIMEN SHRUBS AND NODES WILL HAVE ACCENT PLANTINGS. PLANT SPECIES WHICH ENHANCE THE ARCHITECTURAL ELEVATIONS SHALL BE USED. A DIVERSE USE OF PLANT SPECIES WILL DISPLAY VARIOUS TEXTURES, FORMS, FOLIAGE COLOR, AND FLOWERS; WILL CREATE A BEAUTIFUL LANDSCAPE TO CONTRIBUTE AESTHETICALLY TO THE SURROUNDING NEIGHBORHOODS.

THE TREES HAVE BEEN SELECTED TO HAVE NON-INVASIVE ROOT SYSTEMS, AND PLACED WITH ADEQUATE SETBACKS TO ENSURE NO CONFLICT WITH UTILITIES AND HARDSCAPE, OR CONFLICT WITH ANY SITE LINE DISTANCES. ROOT BARRIERS WILL BE INSTALLED ON ALL TREES NEAR PAVING AND UTILITIES. WHERE FEASIBLE, TREES HAVE BEEN PLACED TO MITIGATE SOLID BUILDING SURFACES AND FENCES. TALLER SHRUBS WILL ALSO BE LOCATED AT SOLID BUILDING SURFACES AND FENCES, WHILE LOWER SHRUBS WILL BE LOCATED WHERE GROUND LEVEL WINDOWS AND ARCHITECTURAL FEATURES OCCUR, AND AT CORNERS TO MAINTAIN SITE LINE DISTANCES.

THE IRRIGATION SYSTEM WILL USE WEATHER-BASED CONTROLLERS TO CONSERVE THE USE OF WATER. SPRAY IRRIGATION WILL ONLY OCCUR AT TURF AREAS, AND SPRAY HEADS WITH LOW PRECIPITATION RATES WILL BE USED TO MINIMIZE RUNOFF, EROSION AND OVERSPRAY. THE BALANCE OF THE PLANTING AREAS WILL BE IRRIGATED USING DRIP IRRIGATION METHODS. THE TREES WILL BE ON SEPARATE VALVES AND WILL BE IRRIGATED WITH BUBBLERS. SHRUBS WILL BE HYDROZONED ACCORDING TO THEIR WATER REQUIREMENTS AND MICROCLIMATES.

IT IS OUR INTENT TO SPECIFY IN THE LANDSCAPE CONSTRUCTION DOCUMENTS THE USE OF RECYCLED MATERIALS SUCH AS RECYCLED WOOD MULCH, INGREDIENTS WITHIN THE CONCRETE, FORMWORK, SITE FURNITURE, ETC. IT IS OUR INTENT TO STOCKPILE THE TOPSOIL FOR RE-USE, UNLESS SOIL TESTS DEEM THE SOIL INADEQUATE AND RECOMMEND IMPORTED SOIL. WE INTEND TO RECYCLE A MINIMUM OF 50% OF THE LANDSCAPE CONSTRUCTION AND GREEN WASTES.

NOTES:

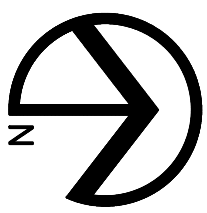
1. ALL TREES SHALL BE PLANTED AND STAKED PER CITY STANDARDS.
2. TREES BE PLANTED WITHIN 3' OF HARDSCAPE ELEMENTS, SHALL HAVE A LINEAR ROOT BARRIER INSTALLED ADJACENT TO THE HARDSCAPE ELEMENT AT TIME OF TREE PLANTING.
3. LANDSCAPE AND IRRIGATION SHALL COMPLY WITH CITY'S CURRENT WATER-EFFICIENT LANDSCAPE ORDINANCE.
4. ALL PLANTING AREAS SHALL BE AUTOMATICALLY IRRIGATED PER CITY STANDARDS. USING LOW-FLOW SPRAY, BUBBLERS OR DRIP METHODS.
5. ALL PLANTING AREAS SHALL BE MULCHED TO A MINIMUM DEPTH OF 3".

NOTES:

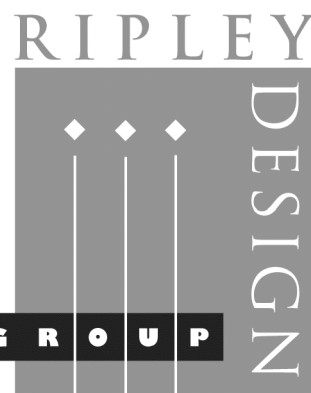
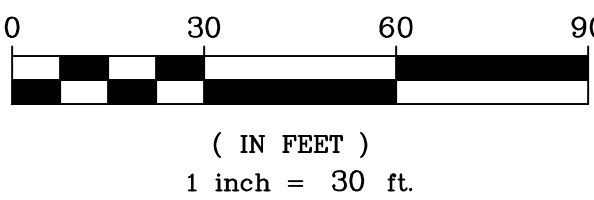
STREET TREES WILL BE REQUIRED AND PLANTED BY THE DEVELOPER. SELECTION WILL BE MADE FROM THE CITY'S APPROVED MASTER STREET TREE LIST AND INSPECTED BY THE PARKS DIVISION MAY OCCUR. PLANTING SHALL BE DONE IN ACCORDANCE WITH THE CITY STANDARDS AND SPECIFICATIONS FOR PLANTING PARKWAY TREES. ANY SUBSTITUTIONS IN TREE SELECTION MUST BE FROM THE APPROVED MASTER STREET TREE LIST.

TREE MITIGATION NOTES:

ALL ONSITE EXISTING TREES ARE EUCALYPTUS SPP. AND ARE PROPOSED TO BE REMOVED. FIFTEEN-GALLON TREES ARE PROPOSED TO REPLACE AND MITIGATE ALL REMOVED TREES. FINAL MITIGATION TREE SPECIES ARE SUBJECT TO CITY APPROVAL. ANY INADEQUATE TREE REPLACEMENT CONDITIONS SHALL BE SATISFIED BY IN-LIEU FEES.



GRAPHIC SCALE



LANDSCAPE ARCHITECTURE
LAND PLANNING
1615 BONANZA STREET
SUITE 314
WALNUT CREEK, CA 94596
TEL: 925.938.7377
FAX: 925.9387436



RYDER HOMES



Preliminary Landscape Plan

Meadow Creek Townhomes

Santa Rosa, California

March 21, 2025

L1