

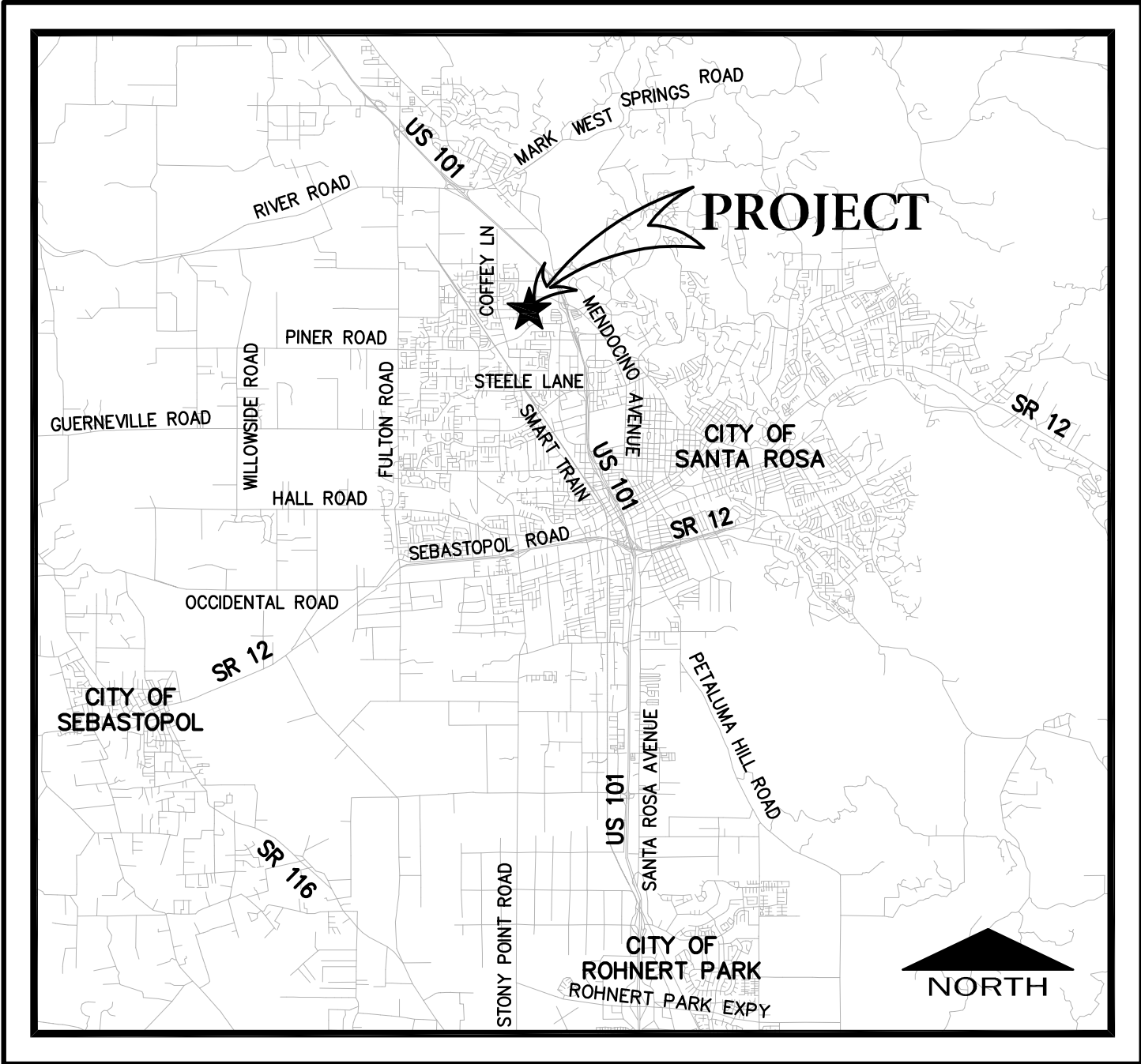
IMPROVEMENT PLANS

O'ROURKE TESLA PARKING LOT

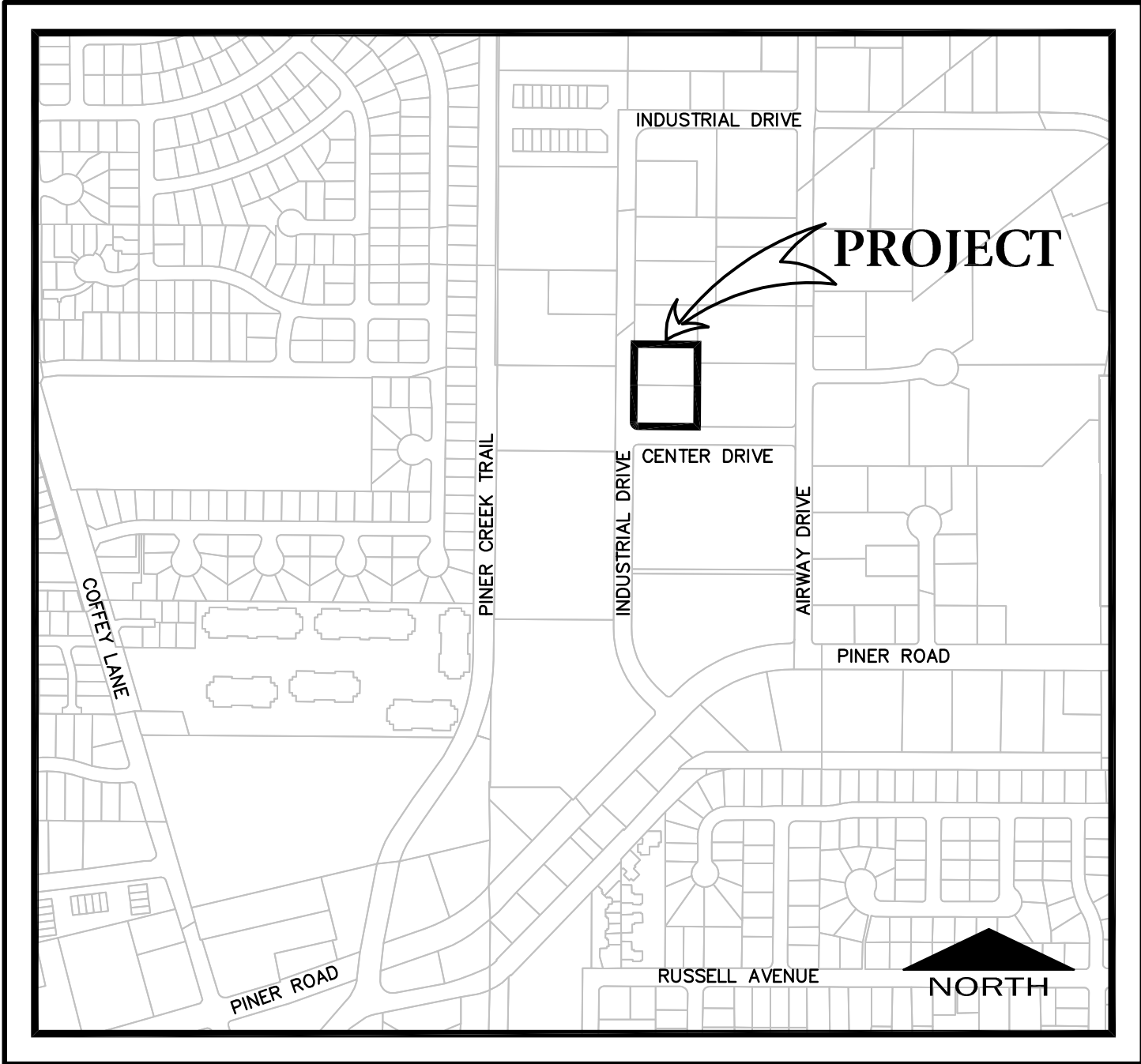
SANTA ROSA
SONOMA COUNTY - CALIFORNIA

AUGUST 2023

City of Santa Rosa
Planning & Economic
Development Department
October 06, 2023
Received

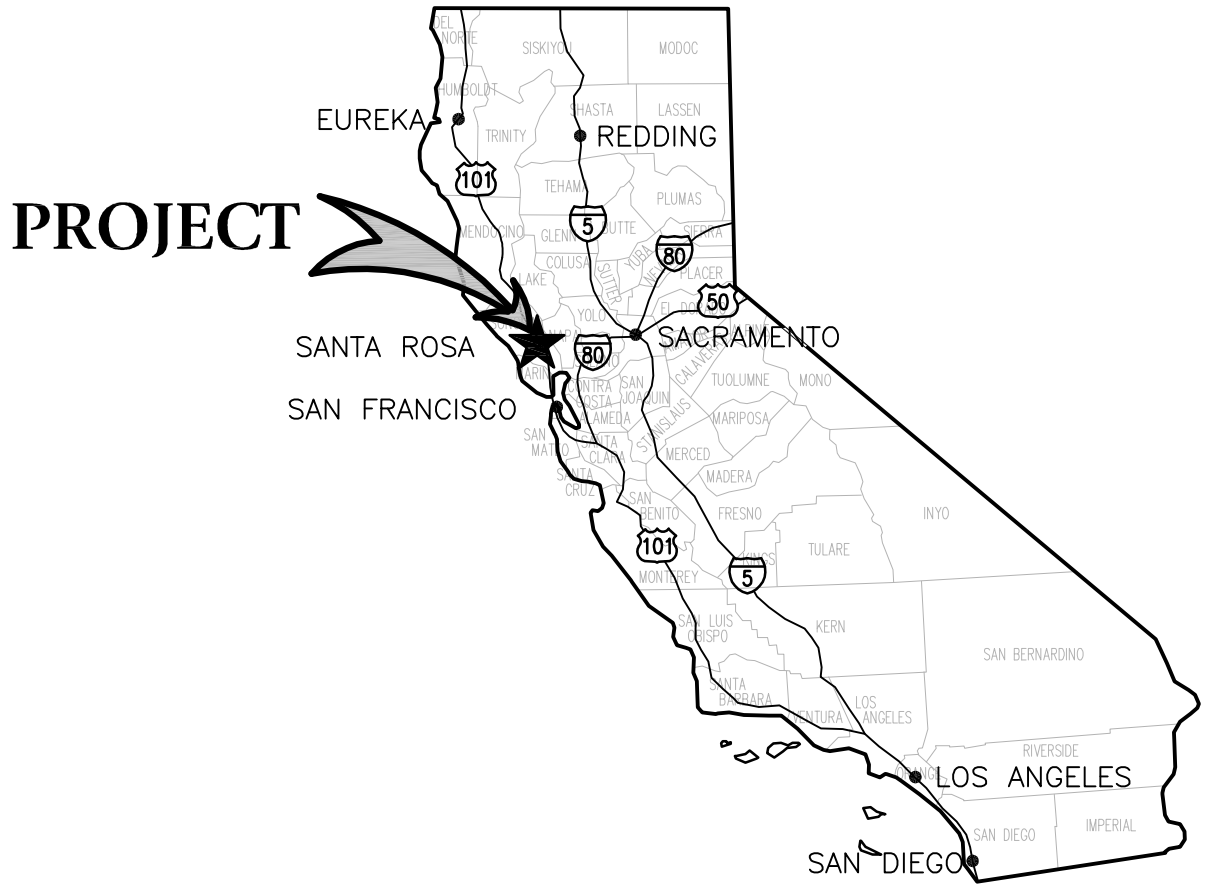


VICINITY MAP
NOT TO SCALE



LOCATION MAP
NOT TO SCALE

Brelje & Race
CONSULTING ENGINEERS
875 MARSH ROAD - SUITE 110 - SANTA ROSA, CA 95402 - (707) 576-1322
www.brelje.com



CALIFORNIA STATE MAP
NOT TO SCALE

PRELIMINARY
FOR STUDY PURPOSES ONLY
DATE AUGUST 2023

IMPROVEMENT PLANS
O'ROURKE TESLA
PARKING LOT

SHEET C1 OF 9

ABBREVIATIONS

AB	AGGREGATE BASE	MG	MILLION GALLONS
ABN	ABANDONED	MH	MANHOLE
ABS	ACRYLONITRILE-BUTADIENE-STYRENE	MIN	MINIMUM
AC	ASPHALT CONCRETE	MISC	MISCELLANEOUS
ACP	ASBESTOS CEMENT PIPE	MJ	MECHANICAL JOINT
AD	ALGEBRAIC DIFFERENCE	MON	MONUMENT
ADG	ADVERSE WITH DISABILITIES ACT	MSL	MEAN SEA LEVEL
ADP	ADAPTER	NG	NORTH
AGS	AGGREGATE	NO	NATURAL GRADE
AL	ALUMINUM	NR	NUMBER
ANG	ANGLE	NA	NOT APPLICABLE
AP	ANGLE POINT	NC	NOT IN CONTRACT
APN	ASSESSORS PARCEL NUMBER	NPT	NATIONAL PIPE THREAD
APPROX	APPROXIMATE	OC	ON CENTER
ARV	AIR RELEASE VALVE	OD	OUTSIDE DIAMETER
AVE	AVENUE	OH	OVERHEAD
AVG	AVERAGE	OZ	OUNCE
BC	BEGIN HORIZONTAL CURVE	PA	PLANTER AREA
BFP	BACKFILL PREVENTER	PB	PULL BOX
BLDG	BUILDING	PC	POINT OF CURVATURE
BLVD	BOULEVARD	PCC	POINT OF COMPOUND CURVATURE
BM	BENCHMARK	PCD	PORTLAND CEMENT CONCRETE
BO	BACK OF CURB	PE	PLAIN END
BV	BUTTERFLY VALVE	PEC	POTHOELECTRIC CELL
BVC	BEGIN VERTICAL CURVE	PED	PEDESTRIAN
BSW	BACK OF SIDEWALK	PS	PAV DRAIN
BT	BOTTOM OF TAPER	PI	POINT OF INTERSECTION
BW	BRIELLE & RACE	PV	POST INDICATOR VALVE
C	CONDUIT	R	PROPERTY LINE
CAV	COMBINATION AIR AND VACUUM RELEASE VALVE	PN	PAVING NOTCH
CB	CATCH BASIN	POC	POINT OF CONNECTION
CB	CALIFORNIA BUILDING CODE	POC	POINT OF COMPOUND CURVE
CDP	CONTROLLED DENSITY FILL	POVC	POINT ON VERTICAL CURVE
CHK	CHECK	POS	PRIVATE OPEN SPACE
CIP	CAST IRON PIPE	POT	POINT ON TANGENT
CIPP	CAST-IN-PLACE PIPE	PP	POWER POLE
CONTR	CONTRIBUTOR	PRV	POINT OF REVERSE CURVATURE
CL	CENTERLINE	PRV	PRESSURE REDUCING VALVE
CLR	CLEAR	PSI	POUND PER SQUARE INCH
CMP	CORRUGATED METAL PIPE	PSV	PRESSURE SUSTAINING VALVE
CMU	CORRUGATED METAL PIPE ARCH	PT	POINT OF TANGENCY
CMU	CONCRETE MASONRY UNIT	PUB	PUBLIC UTILITY EASEMENT
COAX	COAXIAL CABLE	PVC	POLYVINYL CHLORIDE
CONC	CONCRETE	PVI	POINT OF VERTICAL INTERSECTION
CONC	CONCRETE	PWT	PUBLIC WATER EASEMENT
CONST	CONSTRUCTION	RAW	RAW WATER
COTG	CLEANOUT TO GRADE	RCB	REINFORCED CONCRETE BOX
CPLG	CURB RETURN	RCF	REINFORCED CONCRETE PIPE
CR	CORRUGATED STEEL PIPE	RD	ROAD
CT	CURTAIN TREATED BASE	RD	ROOF DRAIN
CTR	CENTER	RED	REDUCED
CTR	CURB YARD	REF	REFERENCE
CU	CENTER TO CENTER	ROW	RIGHT OF WAY
C&G	CURB AND GUTTER	RPP	REDUCED PRESSURE BACKFLOW PREVENTER
DBL	DOUBLE	RPM	RAISED PAVEMENT MARKER
DDCD	DOUBLE CHECK DETECTOR CHECK	RPM	REMOTE SUPERVISORY CONTROL
DDC	DOUBLE DETECTOR CHECK	RT	RIGHT
DET	DETECTOR CHECK VALVE	RT	RING TIGHT
DDC	DOUBLE DETECTOR CHECK	RW	RECYCLED WATER
DI	DETECTOR HANDHOLE	RWL	RAIN WATER LEADER
DI	DROP INLET	R/W	RIGHT OF WAY
DIA	DIAMETER	S	SOUTH
DIP	DUCTILE IRON PIPE	S	SLOPE
DLC	DETECTOR LOOP CONDUIT	S.A.D.	SEE ARCHITECTURAL DRAWINGS
DLS	DOWNSPOUT	SCADA	SUPERVISORY CONTROL AND DATA ACQUISITION
DMS	DRAINAGE MANHOLE	SD	SCHEDULE
DWG	DRAWING	SD	STORM DRAIN
DWR	DASHED WHITE PAVEMENT MARKER	SDCB	STORM DRAIN CATCH BASIN
DWY	DRIVEWAY	SDCO	STORM DRAIN CLEANOUT
DY	DOUBLE YELLOW	SDDI	STORM DRAIN DROP INLET
DYR	DASHED YELLOW RAISED PAVEMENT MARKER	SE	STORM DRAIN EASEMENT
E	EAST	SDMH	STORM DRAIN MANHOLE
EA	EACH	SE	SEWER EASEMENT
EC	END HORIZONTAL CURVE	S.E.D.	SEE ELECTRICAL DRAWINGS
ECC	ECCENTRIC	SF	SQUARE FEET
EFL	EFFLUENT (SEWER)	SIG	SIGNAL
ELEV	EXISTING GROUND	S.L.D.	SEE LANDSCAPE DRAWINGS
ELEC	ELECTRICAL	SLP	SLIP ON FLANGE
ELBOW	EDGE OF PAVEMENT	SO	SIDE OPENING (SD)
END	END	S.P.D.	SEE PLUMBING DRAWINGS
EVC	EASEMENT	SPEC	SPECIFICATION
EW	END VERTICAL CURVE	SS	SQUARE
EX	EXISTING	SS	STAINLESS STEEL
EX	EXISTING	SSCO	SANITARY SEWER CLEANOUT
FA	FIRE ALARM	S.S.D.	SEE STRUCTURAL DRAWINGS
FC	FACE OF CURB	SSMH	SANITARY SEWER MANHOLE
FD	FLANGED COUPLING ADAPTER	ST	STREET
FDC	FIRE DEPARTMENT CONNECTION	STA	STATION
FF	FINISHED FLOOR	STD	STANDARD
FF	FINISHED FLOOR	STL	STANDARD
FG	FINISHED GRADE	SVC	SERVICE
FI	FIRE HYDRANT	SWS	SIDEWALK EASEMENT
FL	FLOWLINE	SW	SIDEWALK
FLG	FLANGE	T	TANGENT
FLSO	FLOWLINE OF SIDE OPENING	TAN	TANGENT
FLEX	FLEXIBLE	TB	TOP OF BOX
FM	FORCE MAIN (PRESSURE)	TBM	TEMPORARY BENCHMARK
FR	FIBERGLASS REINFORCED PLASTIC	TC	TOP OF CONCRETE
FT	FEET	TC	TOP OF CURB
FTG	FOOTING	TCE	TEMPORARY CONSTRUCTION EASEMENT
G	GALLON	TD	TOP OF DIKE
GALV	GALVANIZED	TEL	TELEPHONE
GS	GRADE BREAK	TEMP	TEMPORARY
GPM	GALLONS PER MINUTE	TF	TOP OF FOUNDATION
GSP	GALVANIZED STEEL PIPE	TG	TOP OF GRATE
GV	GAS VALVE	THD	THREADS
H	HEAD	TP	TOP OF PIPE
HG	HOSE BIBB	TS	TOP OF SLAB
HB	HEADER BOARD	TS	TRAFFIC SIGNAL
HD	HOT DIPPED GALVANIZED	TT	TOP OF TAPER
HPE	HIGH DENSITY POLYETHYLENE	TW	TOP OF WALL
HORIZ	HORIZONTAL	TWLT	TWO WAY LEFT TURN LANE
HP	HIGH POINT	TY	TYPICAL
HPS	HIGH PRESSURE GAS	UC	UTILITY CHASE
HPS	HIGH PRESSURE SODIUM	UFFG	UNDER FLOOR FINISHED GRADE
HNY	HIGHWAY	UG	UNDERGROUND
ICV	INTERCONNECT	UNO	UNLESS NOTED OTHERWISE
IR	IRRIGATION CONTROL VALVE	V	VOLT
ID	INSIDE DIAMETER	VCP	VITRIFIED CLAY PIPE
INT	INTERIOR	VERT	VERTICAL
IP	IRON PIPE	VG	VALLEY GUTTER
IPS	IRON PIPE SIZE	VLT	VAULT
IRS	IRRIGATION	W	WEST
ISA	INTERNATIONAL SYMBOL	W	WATER
JB	JUNCTION BOX	WB	WALL BACK DRAIN
JO	JOINT POLE	WM	WATER METER
JO	JOINT TRENCH	WNF	WELD NECK FLANGE
KV	KILOVOLT	WS	WATER SERVICE
L	LENGTH	WSS	WATER SAMPLING STATION
L	LENGTH	WT	WEIGHT
LAT	LATERAL	WTR	WATER
LF	LINEAL FEET	WV	WATER VALVE
LG	LIP OF GARAGE	WWF	WELDED WIRE FABRIC
LIP	LIP OF GUTTER	YD	YARD
LMA	LANE LINE	°	DEGREES
LMA	LUMINAIRE MAST ARM	'	MINUTES
LN	LANE	Δ	SECONDS
LP	LOW POINT	Δ	AND
LT	LEFT	Δ	AND
LUM	LUMINAIRE	#	NUMBER
MAX	MAXIMUM	#	POUNDS
MB	MAILBOX	%	PERCENT
MGR	METAL BEAM GUARD RAIL		
MFR	MANUFACTURE		

LEGEND

LINES		
BOUNDARY	-----	---
PARCEL	-----	---
CENTER	-----	---
EASEMENT	-----	---
UTILITY LINES		
STORM DRAIN	-----	-----
WATER	-----	-----
SEWER	-----	-----
GAS	-----	-----
ELECTRICAL	-----	-----
TELEPHONE	-----	-----
TELEVISION	-----	-----
JOINT TRENCH	-----	-----
TOPOGRAPHY		
DROP INLET	-----	-----
DROP INLET WITH SIDE OPENINGS	-----	-----
WATER METER	-----	-----
WATER VALVE	-----	-----
BLOWOFF	-----	-----
FIRE HYDRANT	-----	-----
THRUST BLOCK	-----	-----
GAS METER	-----	-----
STORM DRAIN MANHOLE	-----	-----
STORM DRAIN CATCH BASIN	-----	-----
SEWER MANHOLE	-----	-----
SEWER CLEANOUT	-----	-----
JOINT POLE	-----	-----
LIGHT STANDARD	-----	-----
QUIV/ANCHOR	-----	-----
CURB & GUTTER	-----	-----
AC DIKE	-----	-----
FENCE	-----	-----
CHAIN LINK FENCE	-----	-----
DITCH/SWALE	-----	-----
MONUMENT	-----	-----
TREE PROTECTION	-----	-----
TREE TO BE SAVED	-----	-----
TREE TO BE REMOVED	-----	-----

GENERAL UTILITY NOTES

- THE USE OF CONTROLLED DENSITY BACKFILL (CDP) WITHIN ANY PUBLIC SEWER OR WATER TRENCH IS NOT ALLOWED UNLESS SPECIFICALLY APPROVED BY THE DIRECTOR OF PUBLIC WORKS.
- THERE SHALL BE NO UNMETERED CONNECTIONS TO THE CITY OF SANTA ROSA WATER SYSTEM INCLUDING CONNECTIONS EXPOSING THE METER FOR TESTING ONCE PLUMBING OR FOR OBTAINING CONSTRUCTION WATER. SUCH CONNECTIONS SHALL BE SEVERED BY THE WATER DEPARTMENT AND WILL RESULT IN PENALTIES, INCLUDING PAYMENT OF FINES AND ESTIMATED WATER USAGE FEES.
- CONTRACTOR SHALL NOTIFY INSPECTOR A MINIMUM OF 48 HOURS IN ADVANCE TO ALLOW FOR VISUAL ONSITE INSPECTION OF WATER PIPE JOINTS, VALVES, CONNECTIONS, SERVICE SADDLES, HARNESSES, ANCHORS AND THRUST BLOCKS, PRIOR TO BACKFILLING.
- CONTRACTOR SHALL NOTIFY INSPECTOR A MINIMUM OF 48 HOURS IN ADVANCE TO ALLOW FOR VISUAL INSPECTION OF CUT/TIE INS TO THE SEWER SYSTEM AND ALL ABANDONMENTS.
- ONLY AUTHORIZED CITY PERSONNEL SHALL OPERATE VALVES ON THE EXISTING WATER SYSTEM.
- RESTRAINED MECHANICAL JOINTS SHALL BE USED ON ALL TEES, FITTINGS, AND ASSOCIATED GATE VALVES UNLESS OTHERWISE APPROVED OR DIRECTED BY THE INSPECTOR.

GENERAL NOTES

- CONTRACTOR SHALL OBTAIN AND PAY FOR ALL CONSTRUCTION PERMITS REQUIRED BY THE CITY OF SANTA ROSA (SUCH AS ENCROACHMENT, GRADING, BUILDING, DEMOLITION ETC.) PRIOR TO COMMENCEMENT OF WORK.
- AN ENCROACHMENT PERMIT MUST BE OBTAINED FROM THE DEPARTMENT OF PUBLIC WORKS PRIOR TO BEGINNING ANY WORK WITHIN THE PUBLIC RIGHT-OF-WAY. PLAN MUST BE SUBMITTED FOR APPROVAL PRIOR TO BEGINNING ANY WORK WITHIN THE PUBLIC RIGHT-OF-WAY.
- THE CONTRACTOR SHALL OBTAIN A DE-WATERING PERMIT FROM THE NORTH COAST REGIONAL WATER QUALITY CONTROL BOARD FOR DE-WATERING OPERATIONS THAT ARE USED TO MANAGE THE REMOVAL OF GROUND WATER FROM EXCAVATIONS AND THEIR DISCHARGE TO THE STORM DRAIN OR STORM DRAIN SYSTEM APPROVED BY THE CITY OF SANTA ROSA ENVIRONMENTAL COMPLIANCE DIVISION PRIOR TO DISCHARGING GROUNDWATER TO THE SEWER.
- TEMPORARY STOCKPILES SHALL NOT BE LOCATED WITHIN CREEK SETBACK AREAS, PROTECTED VEGETATION/TREE AREAS OR WITHIN 10 FEET OF AN ADJACENT RESIDENTIAL PROPERTY LINE. STOCKPILES TALLER THAN 2.5 FEET SHALL NOT BE WITHIN 50 FEET OF AN ADJACENT RESIDENTIAL PROPERTY LINE.
- TEMPORARY STOCKPILES MUST BE REMOVED BY COMPLETION OF GRADING ACTIVITIES UNLESS A SEPARATE TEMPORARY USE PERMIT AND GRADING PERMIT IS OBTAINED FOR THE STOCKPILE.
- CONTRACTOR SHALL SECURE A TRENCH PERMIT FROM THE CALIFORNIA DIVISION OF INDUSTRIAL SAFETY PRIOR TO EXCAVATION OF ANY TRENCH OVER FIVE FEET IN DEPTH.
- IF CONTAMINATED MATERIAL IS ENCOUNTERED DURING CONSTRUCTION, WORK MUST STOP UNTIL A WORK PLAN HAS BEEN APPROVED IN WRITING BY THE CITY FIRE DEPARTMENT AND THE STATE REGIONAL WATER QUALITY CONTROL BOARD (NCRWQCB). HAZARDOUS MATERIAL SHALL BE REMOVED AND DISPOSED OF ACCORDING TO THE REQUIREMENTS OF THE CITY'S FIRE DEPARTMENT. THE APPLICANT IS REQUIRED TO DEMONSTRATE COMPLIANCE WITH STATE AND LOCAL CODES FOR REMOVAL OF ASBESTOS CONTAINING MATERIALS DURING DEMOLITION OF THE STRUCTURES ON THE PROJECT SITE.
- ALL TRENCH SPOILS SHALL BE REMOVED AS THEY ARE GENERATED OR DISPOSED OF ON SITE AS REQUIRED BY THE GRADING PERMIT. EXCESS/UNSUITABLE MATERIAL DISPOSED OF OFFSITE AT AN APPROVED LOCATION BY ENGINEERING DEVELOPMENT SERVICES. CONTAIN AND SECURELY PROTECT STOCKPILED TRENCH BACKFILL AND WASTE MATERIAL FROM WIND AND RAIN AT ALL TIMES UNLESS ACTIVELY BEING USED. DO NOT BLOCK STORM WATER FLOWS.
- ALL UNDERGROUND IMPROVEMENTS INCLUDING SEWER LINES, WATER LINES, STORM DRAINS, PUBLIC UTILITY FACILITIES, AND SERVICES SHALL BE INSTALLED, TESTED, AND ACCEPTED BY THE UTILITIES AND PUBLIC WORKS DEPARTMENTS PRIOR TO PAVING. TRENCH PAVING FOR ALL UTILITIES SHALL BE COORDINATED AND INSTALLED AT THE SAME TIME.
- CONSTRUCTION CONTRACTOR AGREES THAT IN ACCORDANCE WITH GENERALLY ACCEPTED CONSTRUCTION PRACTICES, CONSTRUCTION CONTRACTOR WILL BE REQUIRED TO ASSUME SOLE AND COMPLETE RESPONSIBILITY FOR JOB SITE CONDITIONS DURING THE COURSE OF CONSTRUCTION OF THE PROJECT, INCLUDING SAFETY OF ALL PERSONS AND PROPERTY. THIS REQUIREMENT SHALL BE MADE TO APPLY CONTINUOUSLY AND NOT BE LIMITED TO NORMAL WORKING HOURS. THE CONSTRUCTION CONTRACTOR FURTHER AGREES TO HOLD HARMLESS, INDEMNIFY AND DEFEND THE DESIGN PROFESSIONAL, THE OWNER AND THEIR CONSULTANTS AND THE CITY OF SANTA ROSA, AND EACH OF THEIR OFFICIALS, EMPLOYEES, AND AGENTS FROM ANY AND ALL LIABILITY, REAL OR ALLEGED, IN CONNECTION WITH THE PERFORMANCE OF WORK ON THIS PROJECT, EXCEPTING LIABILITY ARISING FROM THE SOLE NEGLIGENCE OF THE DESIGN PROFESSIONAL.
- THE LOCATIONS OF UNDERGROUND OBSTRUCTIONS SHOWN ON THE DRAWINGS ARE APPROXIMATE ONLY AND SHOULD NOT BE TAKEN AS FINAL OR ALL INCLUSIVE. THE CONTRACTOR IS CAUTIONED THAT THE DRAWINGS MAY NOT INCLUDE ALL EXISTING UTILITIES INCLUDING SEWERS AND STORM DRAINS PRIOR TO ANY TRENCHING TO ALLOW THE ENGINEER TO VERIFY THE GRADE AND ALIGNMENT OF THE UTILITIES, AND VERIFY DESIGN ASSUMPTIONS AND EXACT FIELD LOCATION. EXISTING UTILITIES MAY REQUIRE RELOCATION AND/OR PROPOSED IMPROVEMENTS MAY REQUIRE GRADE OR ALIGNMENT REVISION DUE TO FIELD CONDITIONS.
- THE CONTRACTOR SHALL EXPOSE ALL EXISTING UTILITIES INCLUDING SEWERS AND STORM DRAINS PRIOR TO ANY TRENCHING TO ALLOW THE ENGINEER TO VERIFY THE GRADE AND ALIGNMENT OF THE UTILITIES, AND TO VERIFY DESIGN ASSUMPTIONS AND EXACT FIELD LOCATION. EXISTING UTILITIES MAY REQUIRE RELOCATION AND/OR PROPOSED IMPROVEMENTS MAY REQUIRE GRADE OR ALIGNMENT REVISION DUE TO FIELD CONDITIONS.
- UNDERGROUND FACILITIES NOT SHOWN ON THESE DRAWINGS SUCH AS P&G, TELEPHONE, TV, IRRIGATION, ETC. SHALL BE COORDINATED AND CONSTRUCTED PRIOR TO PLACEMENT OF BASE ROCK AND PAVING.
- CONTRACTOR IS RESPONSIBLE FOR PRESERVATION AND/OR PERPETUATION OF ALL EXISTING SURVEY MONUMENTS (CURB TAGS, IRON PIPES, CENTERLINE WELL DISKS, ETC.) IF THE CONTRACTOR SUSPECTS THAT WORK WILL BE CONDUCTED IN AN AREA WHICH MAY RESULT IN THE DISTURBANCE OF SURVEY MONUMENTS, THE CONTRACTOR SHALL RETAIN THE SERVICES OF A LICENSED PROFESSIONAL LAND SURVEYOR TO LOCATE AND IDENTIFY ALL SURVEY MONUMENTS PRIOR TO DISTURBANCE. RE-ESTABLISH MONUMENTS WHICH HAVE BEEN DISTURBED AS A RESULT OF CONSTRUCTION AND FILE THE APPROPRIATE DOCUMENTATION WITH THE COUNTY CLERK. THE CONTRACTOR SHALL MAINTAIN A MINIMUM OF 10 (TEN) WORKING DAYS NOTICE TO THE ENGINEER/SURVEYOR PRIOR TO DISTURBANCE OR REMOVAL OF EXISTING MONUMENTS. CONTRACTOR SHALL PROVIDE THE CITY WITH A MONUMENT CERTIFICATION LETTER FROM THE ENGINEER/SURVEYOR STATING THAT EXISTING MONUMENTS HAVE BEEN IDENTIFIED AND LOCATED PRIOR TO REMOVAL.
- CONSTRUCTION HOURS SHALL BE LIMITED FROM 7 AM TO 7 PM MONDAY THROUGH SATURDAY. EXCLUDING HOLIDAYS. THIS RESTRICTION INCLUDES THE START UP OF ANY MOTORIZED EQUIPMENT. ALL CONTRACTORS' EQUIPMENT SHALL BE PROPERLY MUFFLED AND SHALL BE SHUT DOWN WHEN NOT IN USE. (HOURS ARE SUBJECT TO THE CONDITIONS OF APPROVAL)
- THE CONTRACTOR SHALL BE RESPONSIBLE FOR REPAIRING DAMAGE OR DETERIORATION OCCURRING TO EXISTING PUBLIC IMPROVEMENTS AS A DIRECT RESULT OF CONSTRUCTION ACTIVITY (GRADING, ROAD CONSTRUCTION, UTILITY INSTALLATION, ETC.). REPAIR MAY REQUIRE PATCHING, SEALING OR OVERLAYING AFFECTED AREAS AS APPROPRIATE TO RETURN THE ROADS TO AT LEAST AS GOOD A CONDITION AS BEFORE CONSTRUCTION. IF THE CONTRACTOR DOES NOT ACT IN A TIMELY MANNER, THE CITY MAY, AT ITS DISCRETION PERFORM THE CORRECTION AND CHARGE THE CONTRACTOR FOR ALL COSTS AND OVERHEAD INCURRED.
- RECORD DRAWINGS SHALL BE PROVIDED TO THE CITY UPON COMPLETION OF PROJECT AND PRIOR TO FINAL ACCEPTANCE.
- THE CONTRACTOR SHALL KEEP THE WORK SITE, STAGING AREAS AND OTHER AREAS USED BY IT IN A NEAT AND CLEAN CONDITION, AND FREE FROM ANY ACCUMULATION OF TRASH. THE CONTRACTOR SHALL DISPOSE OF ALL TRASH, RUBBISH AND WASTE MATERIALS OF ANY KIND GENERATED BY THE CONTRACTOR, SUBCONTRACTOR OR ANY COMPANY HIRED BY THE CONTRACTOR ON A DAILY BASIS. THE CONTRACTOR SHALL ALSO KEEP HAUL ROADS FREE FROM DIRT, RUBBISH, AND UNNECESSARY OBSTRUCTIONS RESULTING FROM SITE OPERATION, DISPOSAL OF ALL TRASH, RUBBISH AND DEBRIS MATERIALS SHALL BE IN A COVERED WASTE RECEPTACLE OR HAULED OFF SITE. IN ACCORDANCE WITH LOCAL CODES AND ORDINANCES GOVERNING LOCATIONS AND METHODS OF DISPOSAL, AND IN CONFORMANCE WITH ALL APPLICABLE LAWS AND REGULATIONS, WASTE RECEPTACLES SHALL BE COVERED AT THE END OF EVERY DAY AND DURING RAIN EVENTS.
- ENSURE THE CONTAINMENT OF SANITATION FACILITIES (E.G., PORTABLE TOILETS) TO PREVENT DISCHARGES OF POLLUTANTS TO THE STORM WATER DRAINAGE SYSTEM, ROADS OR RECEIVING WATERS. SANITATION FACILITIES MUST BE MAINTAINED PERIODICALLY BY A LICENSED SERVICE COMPANY TO KEEP THEM IN GOOD WORKING ORDER AND PREVENT OVERFLOWS. PORTABLE TOILETS ARE REQUIRED TO HAVE SECONDARY CONTAINMENT.
- EQUIPMENT AND MATERIALS NECESSARY FOR CONTROL OF SPILLS SHALL BE AVAILABLE ON SITE AT ALL TIMES. SPILLS AND LEAKS SHALL BE STOPPED AND THE MATERIAL CLEANED UP IMMEDIATELY AND DISPOSED OF PROPERLY. USE PROPER BEST MANAGEMENT PRACTICES (BMPs) TO PREVENT OIL, GREASE, OR FUEL FROM LEAKING ON THE GROUND, INTO THE STORM DRAINS OR SURFACE WATERS.
- CONTAIN CONCRETE WASHOUT AREAS AND SIMILAR AREAS THAT MAY CONTAIN POLLUTANTS TO PREVENT DISCHARGE INTO THE UNDERLYING SOIL OR ONTO THE SURROUNDING AREAS.
- ESTABLISH AND MAINTAIN EFFECTIVE SITE PERIMETER CONTROLS AND STABILIZE ALL CONSTRUCTION ENTRANCES AND EXITS TO SUFFICIENTLY CONTROL EROSION AND SEDIMENT DISCHARGES AND TRACKED MATERIALS FROM LEAVING THE SITE. AT A MINIMUM DAILY AND PRIOR TO ANY RAIN EVENT, THE CONTRACTOR SHALL REMOVE ANY SEDIMENT OR OTHER CONSTRUCTION ACTIVITY RELATED MATERIALS THAT ARE DEPOSITED ON THE ROADS (BY VACUUMING OR SWEEPING).
- PLACE EQUIPMENT OR VEHICLES, WHICH ARE BEING FUELED, MAINTAINED AND STORED, IN A DESIGNATED AREA FITTED WITH APPROPRIATE BMPs.
- AT A MINIMUM, ALL BMPs WILL BE INSPECTED EACH WORKING DAY AND BEFORE ALL RAIN EVENTS. BMPs THAT REQUIRE MAINTENANCE OR REPLACEMENT TO FUNCTION PROPERLY SHALL BE COMPLETED BEFORE THE NEXT FORECASTED RAIN, OR WITHIN THE NEXT 2 WORKING DAYS IF NO RAIN IS PREDICTED. MAINTENANCE INCLUDES REMOVAL OF ACCUMULATED SEDIMENT AND TRASH.
- THE CONTRACTOR SHALL IMPLEMENT AND MAINTAIN ALL APPLICABLE BMPs LISTED IN THE EROSION CONTROL AND /OR STORM WATER POLLUTION PREVENTION PLAN.
- ADA COMPLIANCE: CONSTRUCTION CONTRACTOR MUST COMPLY WITH THE REQUIREMENTS OF THE AMERICAN WITH DISABILITIES ACT (ADA) WHILE WORKING IN THE PUBLIC RIGHT-OF-WAY. IF CONSTRUCTION CONTRACTOR'S WORK IN THE PUBLIC RIGHT-OF-WAY WILL AFFECT PEDESTRIAN ACCESS, THE CONSTRUCTION CONTRACTOR IS REQUIRED TO PROVIDE A PROPERLY SIGNED ACCESSIBLE ROUTE OF TRAVEL. THIS REQUIREMENT SHALL APPLY CONTINUOUSLY AND NOT BE LIMITED TO NORMAL WORKING HOURS.
- SECTION 39 ASPHALT CONCRETE OF THE CITY CONSTRUCTION SPECIFICATIONS FOR PUBLIC IMPROVEMENTS SHALL INCLUDE THE FOLLOWING:
AT ANY TIME DURING THE FIRST 12 MONTHS FROM THE TIME OF PLACEMENT OF THE ASPHALT CONCRETE, THE SURFACE SHALL BE VISUALLY INSPECTED BY THE CITY. IF SIGNS OF STRIPPING OF BINDER FROM AGGREGATE OR LOSS OF AGGREGATE IS APPARENT, THE CITY SHALL CORE THE ASPHALT CONCRETE SURFACE. THE CORE SAMPLES SHALL BE PREPARED PER THE METHOD FOR FIELD-MIXED, LABORATORY-COMPACTED SPECIMENS AND TESTED FOR TSR. ASPHALT CONCRETE WITH A TSR LESS THAN 70 SHALL BE REMEDIATED AS REQUIRED BY THE CITY ENGINEER.

GRADING NOTES

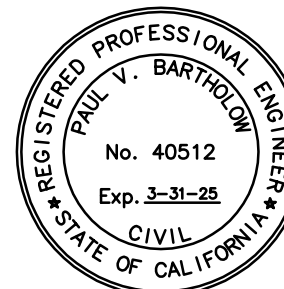
- NO GRADING, CLEARING OR GRUBBING SHALL BE PERFORMED PRIOR TO ISSUANCE OF A GRADING PERMIT BY THE CITY OF SANTA ROSA.
- DUST CONTROL SHALL BE PROVIDED BY CONTRACTOR DURING ALL PHASES OF CONSTRUCTION.
- GRADING SHALL OCCUR ONLY BETWEEN APRIL 15 AND OCTOBER 15 UNLESS OTHERWISE APPROVED BY THE CITY ENGINEER OR CHIEF BUILDING OFFICIAL. GRADING SHALL BE APPROVED BY THE CITY ENGINEER AND A GRADING PERMIT APPLICATION. THE WINTERIZATION OF THE PROJECT SHALL BE THE FIRST ORDER OF WORK.
- SITE GRADING SHALL BE DONE IN COMPLIANCE WITH CHAPTER 18 AND APPENDIX J, MOST RECENT EDITION OF THE CALIFORNIA BUILDING CODE.
- EXISTING NON-COMPLYING FILLS SHALL BE REMOVED OR BROUGHT INTO COMPLIANCE WITH CHAPTER 18, AND APPENDIX J, MOST RECENT EDITION OF THE CALIFORNIA BUILDING CODE, AND THE SATISFACTION OF THE REGISTERED PROFESSIONAL ENGINEER.
- EXCESS AND UNSUITABLE MATERIAL SHALL BE REMOVED FROM THE SITE TO AN AREA APPROVED BY THE CITY BUILDING DIVISION AND CITY FIRE DEPARTMENT. APPROVALS MUST BE IN WRITING PRIOR TO REMOVAL OF MATERIAL.
- DRAINAGE FROM UPSTREAM PROPERTIES SHALL NOT BE BLOCKED BY GRADING OR CONSTRUCTION OF IMPROVEMENTS.
- THE CONTRACTOR SHALL PROTECT EXISTING DRAINAGE FACILITIES FROM SEDIMENTATION DURING ALL PHASES OF CONSTRUCTION.
- HAZARDOUS MATERIAL SHALL BE REMOVED AND DISPOSED OF ACCORDING TO THE REQUIREMENTS OF THE CITY'S FIRE DEPARTMENT. THE APPLICANT IS REQUIRED TO DEMONSTRATE COMPLIANCE WITH STATE AND LOCAL CODES FOR REMOVAL OF ASBESTOS CONTAINING MATERIALS DURING DEMOLITION OF ANY STRUCTURES ON THE PROJECT SITE.
- PRIOR TO ANY GRADING OPERATION, THE CONTRACTOR SHALL INSTALL PROTECTIVE FENCING AROUND THE DRIP LINE OF TREES TO BE SAVED IN COMPLIANCE WITH THE CITY TREE ORDINANCE. THE CUTTING, FILLING, PAVING OR TRENCHING WITHIN ROOT ZONES OF TREES TO BE SAVED MUST BE REVIEWED AND APPROVED BY A CITY APPROVED ARBORIST AND PERFORMED UNDER THEIR ON SITE SUPERVISION.
- DRIP-LINES OF TREES OVERHANGING THE PROPERTY LINE SHALL BE AFFORDED THE SAME LEVEL OF PROTECTION AS TREES ON SITE THAT ARE TO REMAIN.
- DEVELOPMENT MUST CONFORM TO 40 CFR (CODE OF FEDERAL REGULATIONS) PARTS 122, 123 AND 124 NATIONAL POLLUTANT DISCHARGE ELIMINATION SYSTEM (NPDES) PERMIT APPLICATIONS FOR STORM WATER DISCHARGE. PROJECT MUST ALSO CONFORM WITH ANY DESIGN AND CONSTRUCTION POLICIES ADOPTED BY THE CITY TO CONFORM WITH THESE REGULATIONS.
- UNDER 40 CFR, CONSTRUCTION ACTIVITY INCLUDES CLEARING, GRADING AND EXCAVATION ACTIVITIES. THESE ACTIVITIES REQUIRE OBTAINING AN NPDES PERMIT FROM THE STATE WATER RESOURCES CONTROL BOARD FOR PROJECTS WHICH QUALIFY, PRIOR TO THE COMMENCEMENT OF CONSTRUCTION ACTIVITY.
- FILLING IS RESTRICTED TO 1 FOOT MAXIMUM ABOVE EXISTING GROUND AND 2 FOOT MINIMUM ADJACENT TO EXISTING RESIDENTIAL LOTS, UNLESS OTHERWISE APPROVED BY THE CITY ENGINEER.
- BLASTING (IF REQUIRED) REQUIRES A PERMIT FROM THE CITY FIRE DEPARTMENT.
- ALL EXPOSED SURFACES (E.G., PARKING AREAS, STAGING AREAS, SOIL PILES, GRADED AREAS, AND UNPAVED ACCESS ROADS) SHALL BE WATERED TWO TIMES PER DAY.
- ALL HAUL TRUCKS TRANSPORTING SOIL, SAND, OR OTHER LOOSE MATERIAL OFF-SITE SHALL BE COVERED.
- ALL VISIBLE MUD OR DIRT TRACK-OUT ONTO ADJACENT PUBLIC ROADS SHALL BE REMOVED USING WET POWER VACUUM STREET SWEEPERS AT LEAST ONCE PER DAY. THE USE OF DRY POWER SWEEPING IS PROHIBITED.
- ALL VEHICLE SPEEDS ON UNPAVED ROADS SHALL BE LIMITED TO 15 MPH.
- ALL ROADWAYS, DRIVEWAYS, AND SIDEWALKS TO BE PAVED SHALL BE COMPLETED AS SOON AS POSSIBLE. BUILDING PAVEMENT SHALL BE LAID AS SOON AS POSSIBLE AFTER GRADING UNLESS SEEDING OR SOIL BINDERS ARE USED.
- DURING TIMES SHALL BE MINIMIZED EITHER BY SHUTTING EQUIPMENT OFF WHEN NOT IN USE OR REDUCING THE MAXIMUM IDLING TIME TO 5 MINUTES (AS REQUIRED BY THE CALIFORNIA AIRBORNE TOXICS CONTROL MEASURE TITLE 13, SECTION 2485 OF CALIFORNIA CODE OF REGULATIONS [CCR]). CLEAR SIGNAGE SHALL BE PROVIDED FOR CONSTRUCTION WORKERS AT ALL ACCESS POINTS.
- ALL CONSTRUCTION EQUIPMENT SHALL BE MAINTAINED AND PROPERLY TUNED IN ACCORDANCE WITH MANUFACTURER'S SPECIFICATION. ALL EQUIPMENT SHALL BE CHECKED BY A CERTIFIED MECHANIC AND DETERMINED TO BE RUNNING IN PROPER CONDITION PRIOR TO OPERATION.
- POST A PUBLICLY VISIBLE SIGN WITH THE TELEPHONE NUMBER AND PERSON TO CONTACT AT THE LEAD AGENCY REGARDING DUST COMPLAINTS. THIS PERSON SHALL RESPOND AND TAKE CORRECTIVE ACTION WITHIN 48 HOURS. THE AIR DISTRICT'S PHONE NUMBER SHALL ALSO BE VISIBLE TO ENSURE COMPLIANCE WITH APPLICABLE REGULATIONS.

EROSION AND SEDIMENT CONTROL NOTES

- EROSION AND SEDIMENT CONTROL SHOW ON PLANS ASSUMES STREET, CURB, GUTTER AND STORM DRAINS ARE COMPLETED PRIOR TO CONSTRUCTION. THE CONTRACTOR SHALL PREPARE INTERIM DRAINAGE AND EROSION AND SEDIMENT CONTROL PLAN BASED ON WATER CONDITIONS FOR CITY APPROVAL PRIOR TO CONTRACTOR INSTALLATION. A CURRENT EROSION AND SEDIMENT CONTROL PLAN SHALL BE MAINTAINED AND KEPT ON THE JOB SITE.
- EROSION AND SEDIMENT CONTROL MEASURES SHALL BE USED TO ENSURE THAT WATER ENTERING THE STORM DRAIN SYSTEM FROM THE CONSTRUCTION SITE IS OF EQUIVALENT QUALITY AND CHARACTER AS THE WATER ABOVE THE SITE.
- EROSION AND SEDIMENT CONTROL MEASURES SHALL BE PLACED IN FRONT OF INCOMPLETE STORM DRAIN SYSTEMS TO PREVENT DEBRIS AND SEDIMENT-LADEN WATER FROM ENTERING INTO THE PUBLIC STORM DRAIN SYSTEM. BEST MANAGEMENT PRACTICES SHALL BE USED WHEN DESIGNING AND INSTALLING SUCH DEVICES.
- THE CONTRACTOR SHALL BE RESPONSIBLE FOR CONTINUOUS MONITORING OF EROSION AND SEDIMENT CONTROL MEASURES AT ALL TIMES TO THE SATISFACTION OF THE ENGINEER AND CITY OF SANTA ROSA AND IN ACCORDANCE WITH THE PROJECT SWPPP (IF APPLICABLE). EROSION AND SEDIMENT CONTROL MEASURES AND THEIR INSTALLATION SHALL BE COMPLETED USING BEST MANAGEMENT PRACTICES.
- IF THE STORM DRAIN SYSTEM IS NOT IN PLACE BY OCTOBER 15, ADDITIONAL MEASURES SHALL BE TAKEN SUCH AS TEMPORARY SETTLING BASINS WHICH MEET THE SATISFACTION OF THE ENGINEER AND THE CITY OF SANTA ROSA. SET AND/OR CATCH BASINS MUST BE CLEANED OUT ON A REGULAR BASIS AFTER STORMS TO MAINTAIN DESIGN CAPACITY.
- STORM WATER RUNOFF FROM THE CONSTRUCTION SITE SHALL BE DIRECTED TOWARD AN INLET WITH A SEDIMENT OR FILTRATION INTERCEPTOR PRIOR TO ENTERING THE STORM DRAIN SYSTEM.
- THE CONTRACTOR WILL BE RESPONSIBLE FOR CLEANING WATER THAT HAS BECOME POLLUTED DUE TO NOT HAVING NECESSARY EROSION AND SEDIMENT CONTROL ACTIONS.
- THE CONTRACTOR SHALL BE RESPONSIBLE FOR CLEANUP OF MUD AND DEBRIS CARRIED ONTO SURROUNDING STREETS AND ROADS AS A RESULT OF CONSTRUCTION ACTIVITY ON THE SITE TO THE SATISFACTION OF THE CITY OF SANTA ROSA.
- ANY DENIED OR DISTURBED SOILS SHALL BE PROTECTED USING BEST MANAGEMENT PRACTICES.
- PRIOR TO AND DURING A PRECIPITATION EVENT, ALL PAVED AREAS WILL BE KEPT CLEAR OF EARTH MATERIAL AND DEBRIS. THE SITE SHALL BE MAINTAINED BY THE DEVELOPER, CONTRACTOR OR OWNER SO THAT A MINIMUM OF SEDIMENT-LADEN RUNOFF LEAVES THE SITE.
- THE CONTRACTOR SHALL INFORM ALL CONSTRUCTION SITE WORKERS ABOUT THE MAJOR PROVISIONS OF THE EROSION AND SEDIMENT CONTROL PLAN AND SEEK THEIR COOPERATION IN AVOIDING THE DISTURBANCE OF THESE CONTROL MEASURES.
- BEST MANAGEMENT PRACTICES SHALL BE VISUALLY MONITORED ON A WEEKLY BASIS DURING THE DRY SEASON AND RECORDED IN AN INSPECTION CHECKLIST. RAIN EVENT VISUAL MONITORING WILL BE PERFORMED WITHIN 48 HOURS PRIOR TO AN ANTICIPATED RAIN EVENT ONLY DURING A RAIN EVENT AND WITH 48 HOURS FOLLOWING A RAIN EVENT. REMOVE SEDIMENT WHEN ACCUMULATIONS REACH 1/3 THE HEIGHT OF THE BARRIER AND REPLACE FILTER DEVICES AS NECESSARY TO ENSURE PROPER FUNCTION.
- UNSTABILIZED AREAS WILL BE REPAIRED AS SOON AS POSSIBLE AFTER BEING DAMAGED.
- ALL GRADED OR DISTURBED AREAS SHALL BE STABILIZED IMMEDIATELY AFTER GRADING IS COMPLETE.
- ENTRANCE TO THE PROJECT SHALL BE MAINTAINED IN A CONDITION THAT WILL PREVENT TRACKING OR FLOWING OF SEDIMENT INTO PUBLIC RIGHT-OF-WAY. WHEN NECESSARY, WHETLS SHALL BE CLEANED TO REMOVE SEDIMENT PRIOR TO ENTRANCE OF PUBLIC RIGHTS-OF-WAY. WHEN WASHING IS REQUIRED IT SHALL BE DONE IN AN AREA STABILIZED WITH GRASSED ROCK THAT DRAINS INTO A SEDIMENT TRAP.
- ALL SEDIMENT SPILLED, DROPPED, OR TRACKED ONTO PUBLIC RIGHTS-OF-WAY SHALL BE REMOVED IMMEDIATELY USING BEST MANAGEMENT PRACTICES.
- ALL EROSION AND SEDIMENT CONTROL MEASURES SHALL BE REMOVED WHEN THEY HAVE SERVED THEIR PURPOSE SO AS NOT TO BLOCK OR IMPEDE STORM FLOW OR DRAINAGE.
- ALL EROSION AND SEDIMENT CONTROL MEASURES SHALL BE REPAIRED OR REPLACED WHEN THEY ARE NO LONGER FUNCTIONING PER BEST MANAGEMENT PRACTICES.
- THE CONTRACTOR SHALL HAVE EROSION AND SEDIMENT CONTROL MEASURES ON SITE ADEQUATE TO PROTECT THE ENTIRE SITE PRIOR TO THE OCTOBER 15 DATE SUCH THAT IT IS IMMEDIATELY AVAILABLE IN PREPARATION OF THE UPCOMING WINTER SEASON OR IN THE EVENT OF AN EARLY RAIN.
- AFTER CONSTRUCTION IS COMPLETE ALL STORM DRAIN SYSTEMS ASSOCIATED WITH THIS PROJECT SHALL BE INSPECTED AND CLEARED OF ACCUMULATED SEDIMENTS AND DEBRIS.

Brelje & Race

CONSULTING ENGINEERS
475 Aviation Boulevard, Suite 120
Santa Rosa, CA 95403
v: 707-576-1322
f: 707-576-0469
www.broe.com

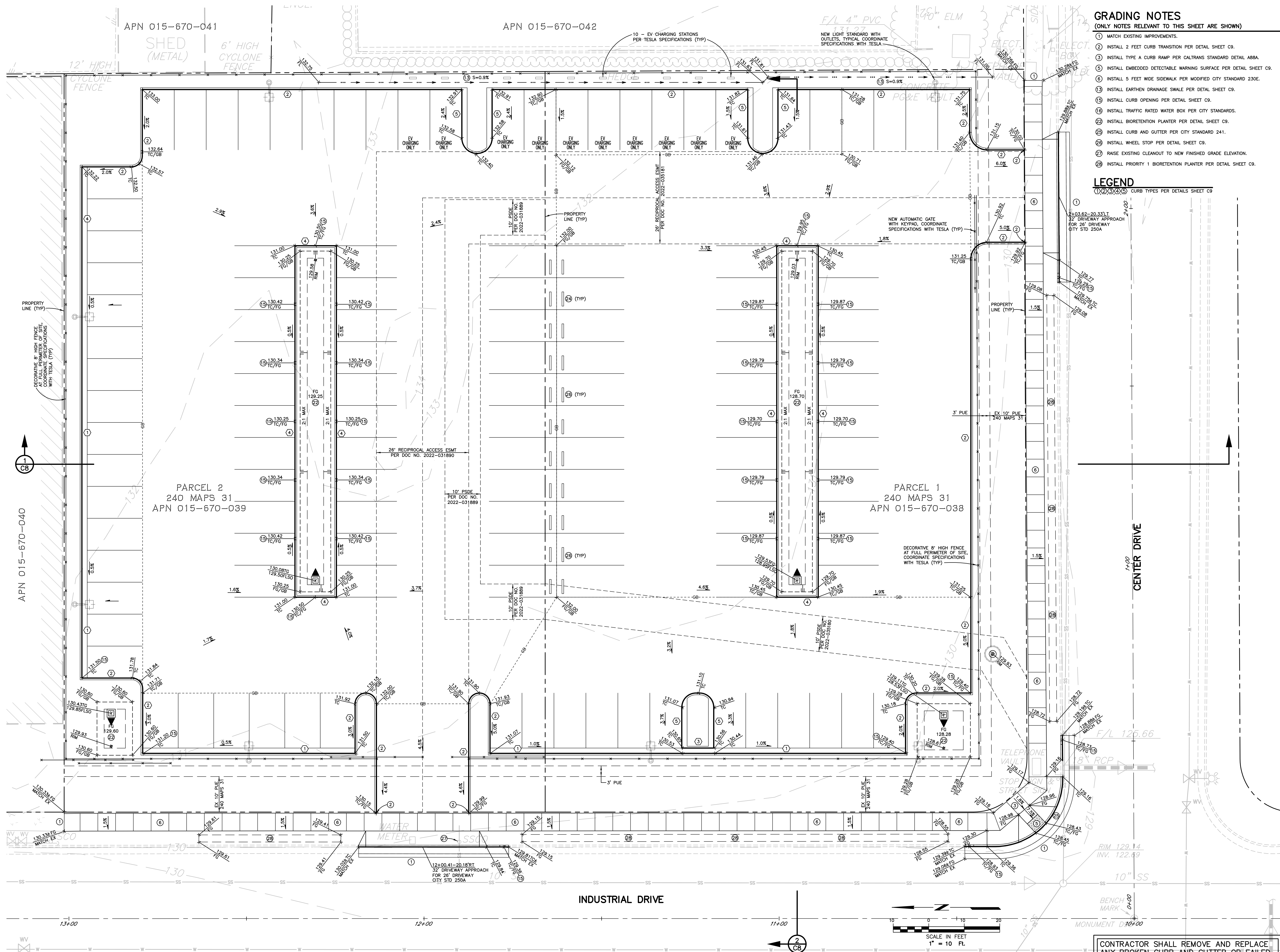


O'ROURKE TESLA PARKING LOT

3300 & 3304
INDUSTRIAL DRIVE
SANTA ROSA, CALIFORNIA

PRELIMINARY FOR STUDY PURPOSES ONLY DATE AUGUST 202

10-08-23 ferrol 4566.dwg 4566 02 4566.02 PLAN.dwg TAB: C3-GRAD



GRADING NOTES (ONLY NOTES RELEVANT TO THIS SHEET ARE SHOWN)

- 1 MATCH EXISTING IMPROVEMENTS.
- 2 INSTALL 2 FEET CURB TRANSITION PER DETAIL SHEET C9.
- 3 INSTALL TYPE A CURB RAMP PER CALTRANS STANDARD DETAIL AB8A.
- 5 INSTALL EMBEDDED DETECTABLE WARNING SURFACE PER DETAIL SHEET C9.
- 6 INSTALL 5 FEET WIDE SIDEWALK PER MODIFIED CITY STANDARD 230E.
- 13 INSTALL EARTHEN DRAINAGE SWALE PER DETAIL SHEET C9.
- 19 INSTALL CURB OPENING PER DETAIL SHEET C9.
- 16 INSTALL TRAFFIC RATED WATER BOX PER CITY STANDARDS.
- 22 INSTALL BIORETENTION PLANTER PER DETAIL SHEET C9.
- 25 INSTALL CURB AND GUTTER PER CITY STANDARD 241.
- 26 INSTALL WHEEL STOP PER DETAIL SHEET C9.
- 27 RAISE EXISTING CLEANOUT TO NEW FINISHED GRADE ELEVATION.
- 28 INSTALL PRIORITY 1 BIORETENTION PLANTER PER DETAIL SHEET C9.

LEGEND

(1)(2)(3)(4)(5) CURB TYPES PER DETAILS SHEET C9

Brelje & Race
CONSULTING ENGINEERS
475 Aviation Boulevard, Suite 120
Santa Rosa, CA 95403
v: 707-576-1322
f: 707-576-0469
www.brce.com



**O'ROURKE TESLA
PARKING LOT**
3300 & 3304
INDUSTRIAL DRIVE
SANTA ROSA, CALIFORNIA

PRELIMINARY
FOR STUDY PURPOSES ONLY
DATE AUGUST 2023

REVISIONS		
NO.	DATE	DESCRIPTION

ON A FULL-SCALE DRAWING, LENGTH OF
BAR BELOW IS 1/4". IF BAR MEASURES
LESS THAN 1/4", THIS SHEET WAS
PLOTTED AT A REDUCED SCALE, WHICH
MAY REQUIRE ADJUSTMENT OF SCALE(S)
SHOWN ON DRAWING.

PROJECT 4566.02	DATE AUGUST 2023
DRAWN BY SYK	CHECKED BY PRB

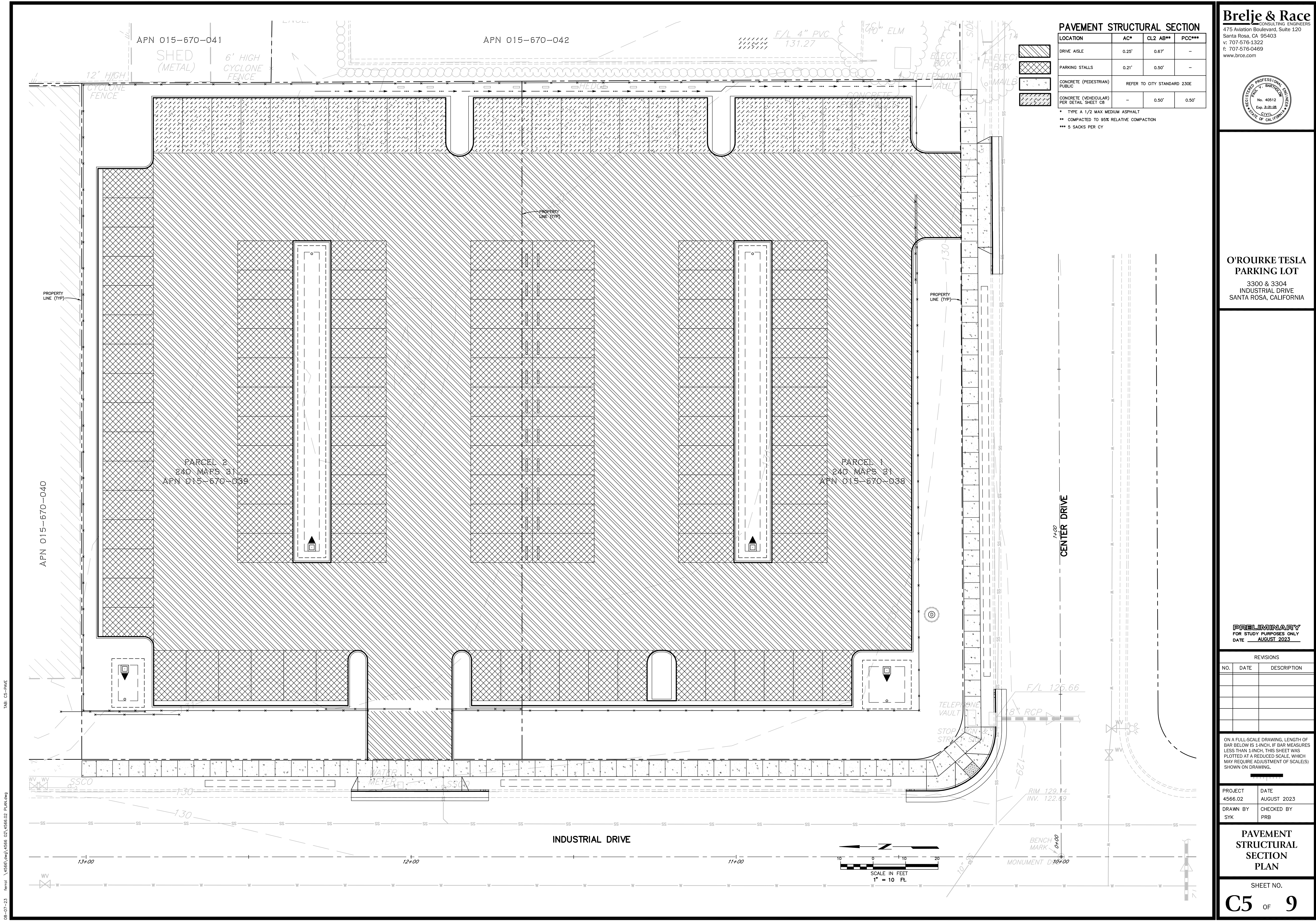
**GRADING
PLAN**

SHEET NO.

C3 OF **9**

CONTRACTOR SHALL REMOVE AND REPLACE
ANY BROKEN CURB AND GUTTER OR FAILED
PAVING TO CITY STANDARDS AT THE
DISCRETION OF THE ENCROACHMENT OFFICER.





PAVEMENT STRUCTURAL SECTION			
LOCATION	AC*	CL2 AB**	PCC***
DRIVE AISLE	0.25'	0.67'	-
PARKING STALLS	0.21'	0.50'	-
CONCRETE (PEDESTRIAN) PUBLIC	REFER TO CITY STANDARD 230E		
CONCRETE (VEHICULAR) PER DETAIL SHEET C8	-	0.50'	0.50'

* TYPE A 1/2 MAX MEDIUM ASPHALT
** COMPACTED TO 95% RELATIVE COMPACTION
*** 5 SACKS PER CY

Brelje & Race
CONSULTING ENGINEERS
475 Aviation Boulevard, Suite 120
Santa Rosa, CA 95403
v: 707-576-1322
f: 707-576-0469
www.brce.com

O'ROURKE TESLA PARKING LOT
3300 & 3304 INDUSTRIAL DRIVE
SANTA ROSA, CALIFORNIA

PRELIMINARY
FOR STUDY PURPOSES ONLY
DATE AUGUST 2023

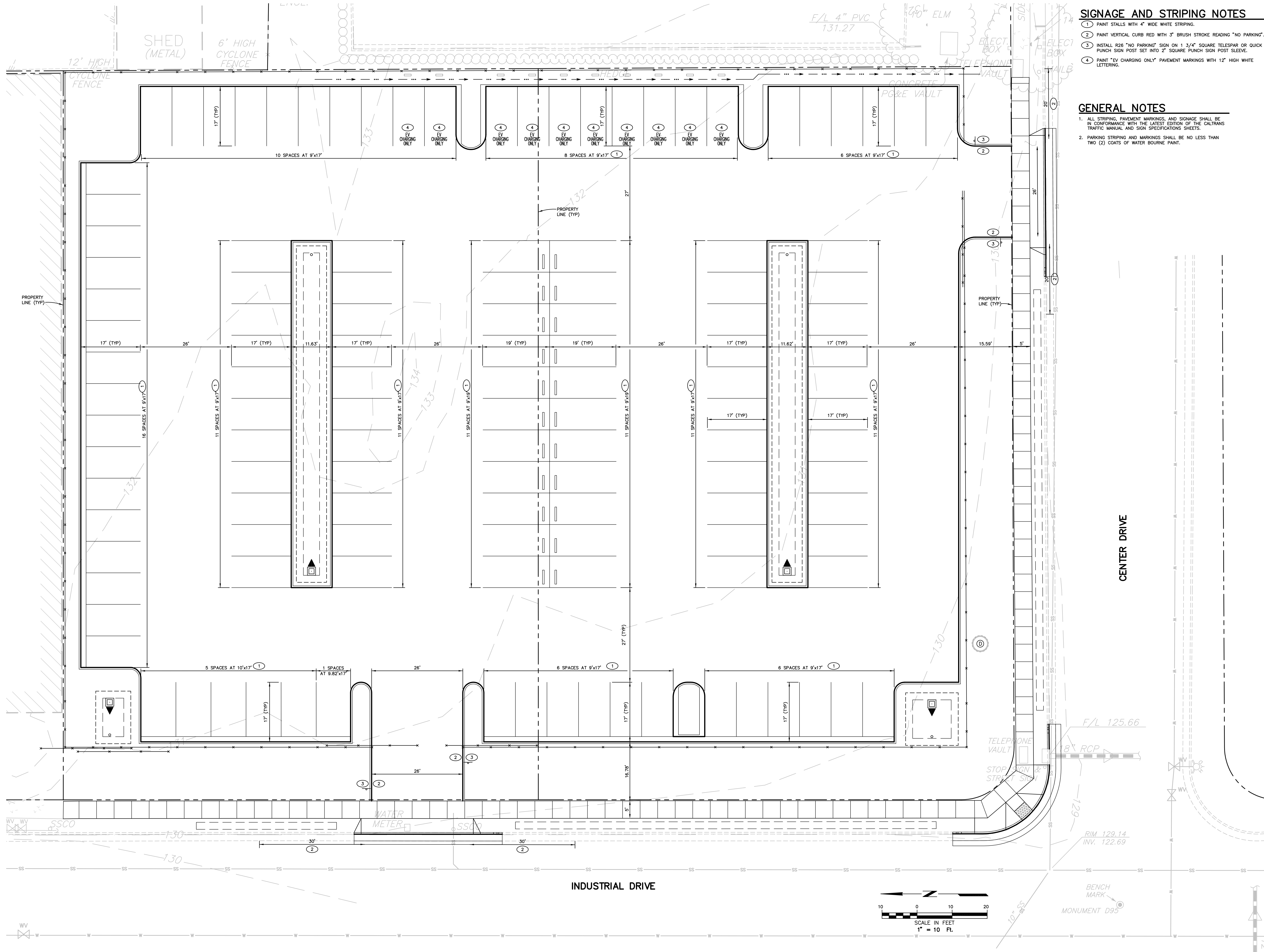
REVISIONS		
NO.	DATE	DESCRIPTION

ON A FULL-SCALE DRAWING, LENGTH OF BAR BELOW IS 1-INCH. IF BAR MEASURES LESS THAN 1-INCH, THIS SHEET WAS PLOTTED AT A REDUCED SCALE, WHICH MAY REQUIRE ADJUSTMENT OF SCALE(S) SHOWN ON DRAWING.

PROJECT 4566.02	DATE AUGUST 2023
DRAWN BY SYK	CHECKED BY PRB

PAVEMENT STRUCTURAL SECTION PLAN

TAB: C6-SIGNAGE
08-07-23 ferrol 4566.dwg 4566 02 4566.02 PLAN.dwg



SIGNAGE AND STRIPING NOTES

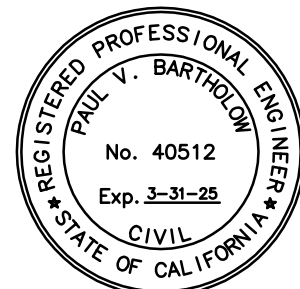
1. PAINT STALLS WITH 4" WIDE WHITE STRIPING.
2. PAINT VERTICAL CURB RED WITH 3" BRUSH STROKE READING "NO PARKING".
3. INSTALL R26 "NO PARKING" SIGN ON 1 3/4" SQUARE TELESAR OR QUICK PUNCH SIGN POST SET INTO 2" SQUARE PUNCH SIGN POST SLEEVE.
4. PAINT "EV CHARGING ONLY" PAVEMENT MARKINGS WITH 12" HIGH WHITE LETTERING.

GENERAL NOTES

1. ALL STRIPING, PAVEMENT MARKINGS, AND SIGNAGE SHALL BE IN CONFORMANCE WITH THE LATEST EDITION OF THE CALTRANS TRAFFIC MANUAL AND SIGN SPECIFICATIONS SHEETS.
2. PARKING STRIPING AND MARKINGS SHALL BE NO LESS THAN TWO (2) COATS OF WATER BOURNE PAINT.

Brelje & Race

CONSULTING ENGINEERS
475 Aviation Boulevard, Suite 120
Santa Rosa, CA 95403
v: 707-576-1322
f: 707-576-0469
www.brce.com



O'ROURKE TESLA PARKING LOT

3300 & 3304
INDUSTRIAL DRIVE
SANTA ROSA, CALIFORNIA

PRELIMINARY
FOR STUDY PURPOSES ONLY
DATE AUGUST 2023

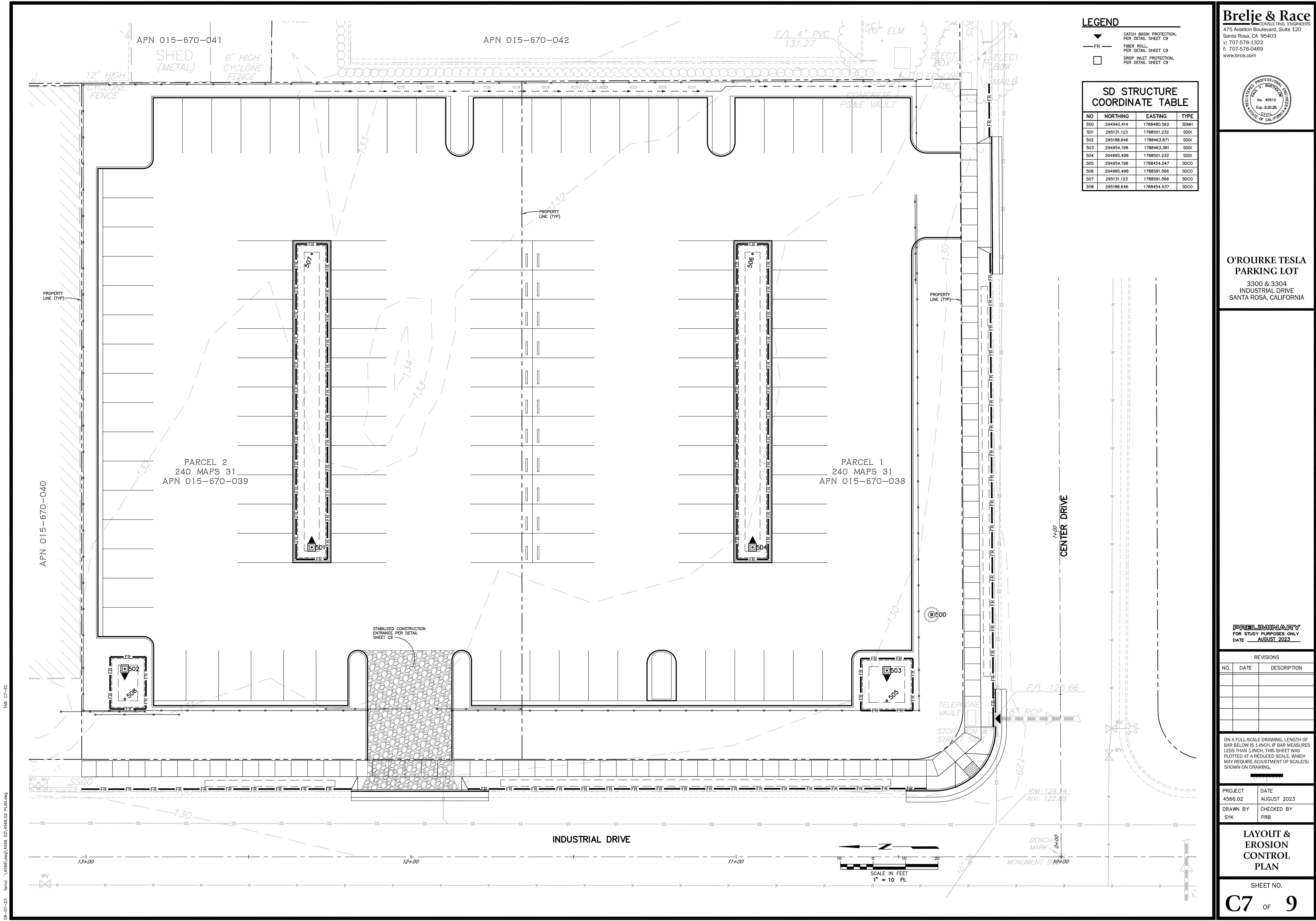
REVISIONS		
NO.	DATE	DESCRIPTION

ON A FULL-SCALE DRAWING, LENGTH OF BAR BELOW IS 1-INCH. IF BAR MEASURES LESS THAN 1-INCH, THIS SHEET WAS PLOTTED AT A REDUCED SCALE, WHICH MAY REQUIRE ADJUSTMENT OF SCALE(S) SHOWN ON DRAWING.

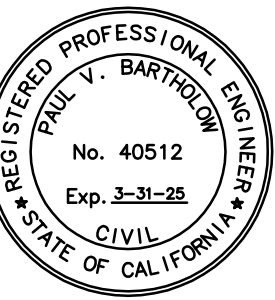
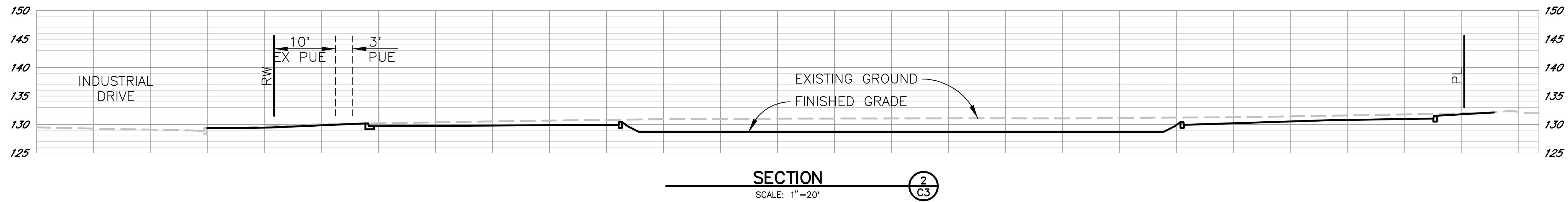
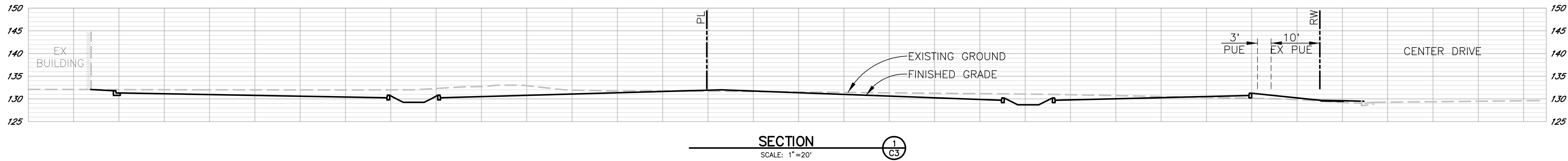
PROJECT 4566.02	DATE AUGUST 2023
DRAWN BY SYK	CHECKED BY PRB

SIGNAGE & STRIPING PLAN

SHEET NO.
C6 OF **9**



08-07-23 K:\itazhi\4566.dwg 4566 02\4566.02 SECTION.dwg TAB: C8-SITE SECTIONS



**O'ROURKE TESLA
PARKING LOT**
3300 & 3304
INDUSTRIAL DRIVE
SANTA ROSA, CALIFORNIA

PRELIMINARY
FOR STUDY PURPOSES ONLY
DATE AUGUST 2023

REVISIONS		
NO.	DATE	DESCRIPTION

ON A FULL-SCALE DRAWING, LENGTH OF BAR BELOW IS 1-INCH. IF BAR MEASURES LESS THAN 1-INCH, THIS SHEET WAS PLOTTED AT A REDUCED SCALE, WHICH MAY REQUIRE ADJUSTMENT OF SCALE(S) SHOWN ON DRAWING.

PROJECT 4566.02	DATE AUGUST 2023
DRAWN BY SYK	CHECKED BY PRB

**SITE
SECTIONS**

