

# Housing and Community Services Financial Update

## Fiscal Year End 2024-25

---

LONG TERM FINANCIAL POLICY  
AUDIT SUBCOMMITTEE

SEPTEMBER 25, 2025

MEGAN BASINGER,  
DIRECTOR OF HCS

SCOTT WAGNER,  
INTERIM CHIEF FINANCIAL OFFICER

# Homeless Services FY 2024-25 Spending

Category	2024-25 Budget	2024-25 Actuals	(Over) Under Budget
Salaries & Benefits	\$886,051	\$681,490	\$204,561
Services & Supplies	\$2,480,894	\$2,362,658	\$118,236
<b>Total</b>	<b>\$3,366,945</b>	<b>\$3,044,148</b>	<b>\$322,797</b>

# HCS – GF Recreation FY 2024-25 Spending

Category	2024-25 Budget	2024-25 Actuals	(Over) Under Budget
Salaries & Benefits	\$5,332,301	\$4,981,214	\$351,087
Services & Supplies	\$2,032,822	\$1,799,025	\$233,796
Total	\$7,365,123	\$6,780,240	\$584,883

# GF Recreation Services & Supplies Detail

Expenditure Detail	FY 2024-25 Actuals
Information Technology	493,011
Neighborhood Fee Class Instructors	282,588
Miscellaneous Services & Office Supplies	219,561
E& R Vehicle Costs	191,637
Swim Center Chemicals & Instructors	189,514
Youth Sports Instructors	107,583
Finley Senior Class Instructors	106,158
Sport Instructors- Umpires	<u>71,674</u>
TOTAL	\$1,799,025

# GF HCS - Recreation Revenue

Revenue Description	FY 2024-25 Actuals
Swim Center Programs & Operations	966,035
Day Camp	573,231
After School Classes	426,748
Sports Fees and Field Rentals	417,239
Senior Rentals & Programs	327,708
Howarth Park Programs	300,599
Finley Center Programs & Rentals	225,488
Miscellaneous Rentals	181,984
Group Picnic & Park Events	143,892
<b>TOTAL</b>	<b>\$3,562,925</b>

# Recreation Fee Increase Forecast

Revenue Description	FY 2024-25 Actuals	Recommended Fee Increases	Incremental FY 26 Revenue*	Incremental FY 27 Revenue
Swim Center Programs & Operations	966,035	Average 21%	\$50,717	\$202,867
Day Camp	573,231	Average 11%	\$15,766	\$63,065
After School Classes	426,748	Average 15%	\$16,003	\$64,012
Sports Fees and Field Rentals	417,239	Average 10%	\$10,431	\$41,724
Senior Rentals & Programs	327,708	Average 10%	\$16,385	\$32,771
Howarth Park Programs	300,599	Average 19%	\$14,278	\$57,114
Finley Center Programs & Rentals	225,488	Average 14%	\$7,892	\$31,568
Miscellaneous Rentals	181,984	Average 14%	\$1,274	\$25,478
Group Picnic & Park Events	143,892	Average 19%	\$6,835	\$27,339
<b>TOTAL</b>	<b>\$3,562,925</b>			<b>\$545,939</b>

\*FY26 revenue reflects a staggered implementation schedule aligned with program seasonality.

# HCS GF Position Summary Detail

Job Title	FTE Count
Director Housing & Comm Services	*1.00
Housing & Community Svcs Manager	1.00
Administrative Service Officer	*1.00
Housing & Comm Service Technician	1.00
Program Specialist I	1.00
Sr Administrative Assistant	*1.00
Administrative Secretary	*1.00
<b>HCS Admin and Homeless Services Positions</b>	<b>*7.00</b>
Deputy Director Recreation	1.00
Administrative Service Officer	1.00
Department Application Specialist	1.00
Recreation Supervisor	*1.00
Recreation Coordinator	*1.00
Recreation Specialist	*1.00
Community Outreach Specialist	*1.00
Recreation Supervisor	3.00
Recreation Coordinator	8.75
Recreation Specialist	6.40
Community Outreach Specialist	1.00
Facilities Attendant	3.00
Sr Administrative Assistant	1.00
Sr Maintenance Worker	1.00
Skilled Maintenance Worker	1.00
<b>Recreation Positions</b>	<b>32.15</b>
<b>Total HCS Positions</b>	<b>39.15</b>

# Homeless Services & Supplies Detail

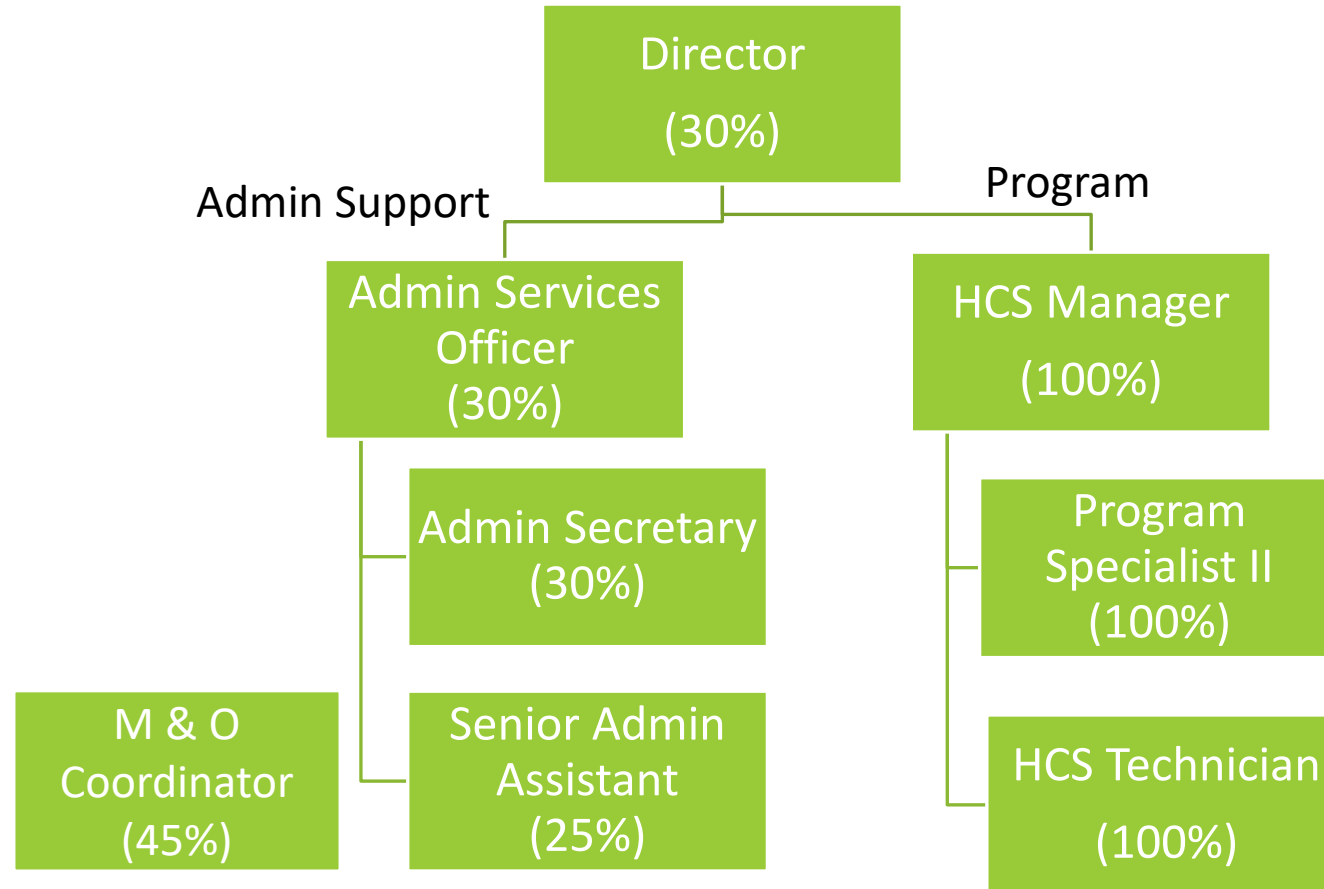
Expenditure Detail	FY 2024-25 Actuals
Sam Jones Hall Local Funds (SoCo, CF, RPTT) *	628,742
HOST Local Funds (RPTT) *	438,422
Keep People Housed Sonoma (Year 1 of 2) (SoCo and Petaluma)	426,249
Caritas Drop-In Center Local Funds (RPTT)	109,005
Caritas Family Center Local Funds (RPTT & GF)	100,000
Seasons of Sharing (RPTT)	58,762
Face to Face (One-time Opioid funding)	38,857
YWCA (RPTT)	50,000
Information Technology (GF)	27,566
Miscellaneous Services & Office Supplies (GF)	<u>20,055</u>
TOTAL	\$1,889,658

\$2.1M in ARPA funds were used in FY 24/25 for SJH and HOST.



# Homeless Services Organization Chart

---



# Homeless Services 25-26 Programs Budget

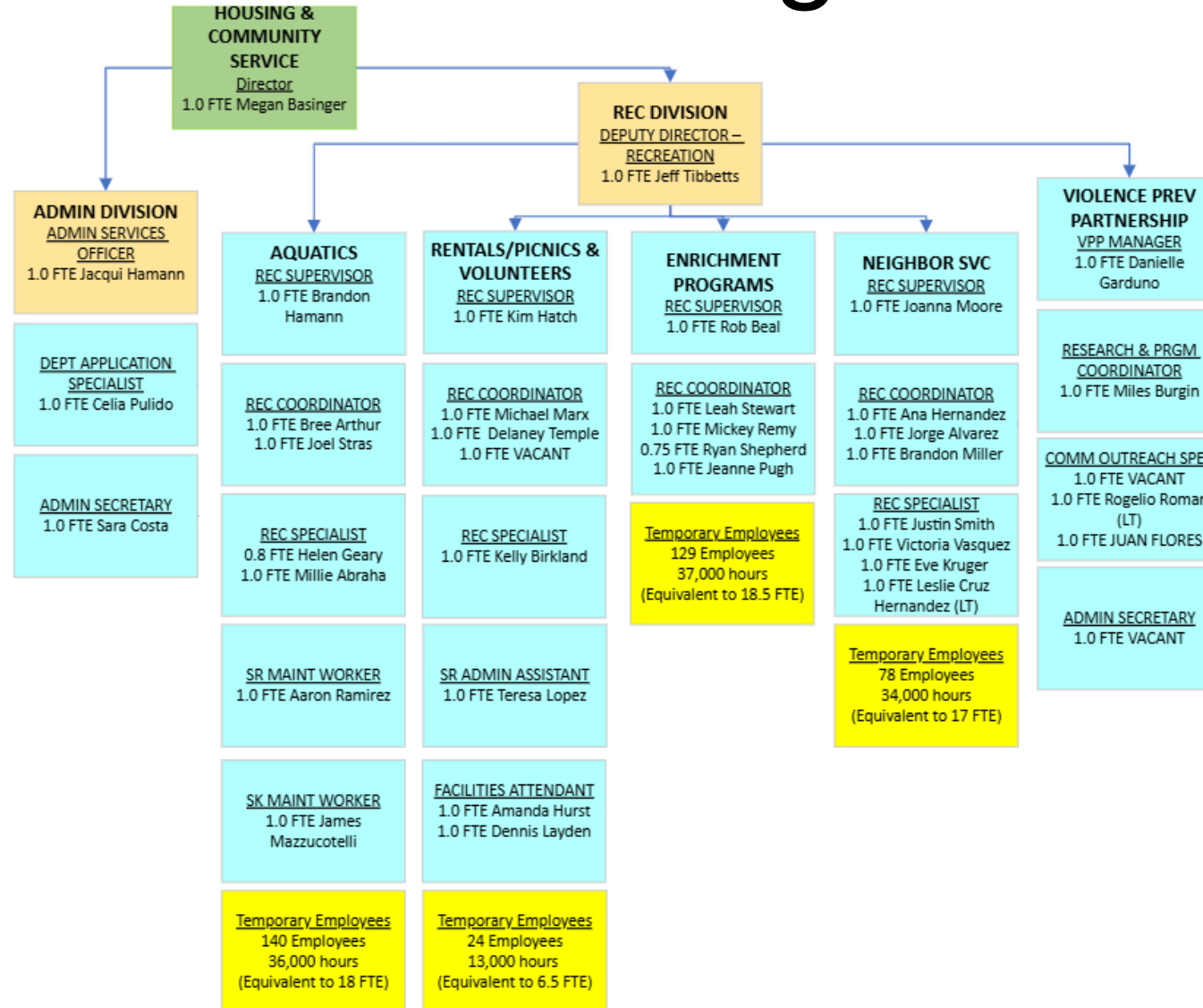
Expenditure Detail	FY 2025/26 Budget
Sam Jones Hall Local Funds (SC, CF, RPTT & Opioid)	1,878,742
HOST Local Funds (RPTT, Opioid & GF)	635,450
Keep People Housed Sonoma (Year 2 of 2) (SoCo and Petaluma)*	400,000
Caritas Drop-In Center Local Funds (GF)	100,000
Information Technology (GF)	29,610
Miscellaneous Services & Office Supplies (GF)	23,205
Homeless Count (GF)	<u>8,000</u>
TOTAL	3,075,007

\*KPH Sonoma- plus \$473K carried over from 24/25

## Homeless Services Programs

- Administer contracts for HOST, Keep People Housed-Sonoma, Caritas Drop-In Center, Safe Parking
- Manage contract and maintenance for largest county shelter, Sam Jones Hall, 213 beds
- Lead Encampment Resolution Team
- Participate in regional Sonoma County Homeless Coalition
- Coordinate By Names List for Santa Rosa
- Programmatic reporting and evaluation
- Complaint tracking and resolution

# Recreation Division Org Chart



# Recreation Services

Aquatics		Rentals/Picnics/Park Permits		Enrichment Programs	Neighborhood Services	Violence Prevention Partnership		Admin Division
Finley Aquatic Center		Facility Operations		Howarth Park	Sports	Community Collaboration		Financial Management
Pool & Sprayground Maintenance		Finley Community Center Public Counter		HP K-Land	Junior Warriors	VPP Policy Team		Budget Oversight & Development
Recreation Swim		Finley Community Center Set-up & Maintenance		HP Boathouse	Cheer	VPP Operational Team		Financial Reporting
Lap Swim		Person Senior Wing – Facility Oversight		HP Animal Barn	City Booters	CHOICE Grant Program		Division Purchases & Invoices
Learn to Swim		Historic Sites – Facility Oversight		HP Pony Concession	NFL Flag	Violence Prevention Annual Seminar		Customer Account Maintenance
Water Fitness & Therapeutics		<b>Facility &amp; Space Rentals</b>		HP Birthday Parties	Futsal	Community Outreach and Education		<b>Contracts &amp; Agreements</b>
Water Polo		Community Center Rentals		<b>Community Events</b>	Sports Clinics	<b>Intervention Services</b>		License Agreements & Contracts
Private Pool Rentals		Clubhouse Rentals		Holiday Crafts Fair	Junior Giants	Safe Campus Intervention Program		<b>Human Resources</b>
Public Counter Customer Service		<b>Park &amp; Picnic Permits</b>		HP Movies in the Park	Dance	Youth Empowerment Circles		Temporary New Hire Processing
Pool Birthday Parties		Picnic Permits		Halloween at Howarth	<b>Enrichment</b>	Clean Slate Tattoo Removal		HR Liaison
<b>Ridgway Swim Center</b>		Park Events Permits		<b>Camps</b>	Family Paint Nights	Workforce Development		Administration of Leaves
Pool & Amusement Maintenance		Sports Field Rentals & Allocations		Camp Wa-Tam	STEM Creations	Guiding People Successfully		Training Coordination & Records
Recreation Swim		Tennis/Pickleball Court Permits		Camp Yu-Chi	ASP Stem	Street Outreach and Crisis Response		Investigation and Disciplinary Procedures
Lap Swim		Park Monitor Program		Doyle Adventure Camp	Birthday Parties			<b>Technology &amp; Systems</b>
Learn to Swim		<b>Community Programs &amp; Services</b>		Camp Wa-Tots	Bricks Building Buddies			Enterprise Software Oversight
Neptune Swimming Club Team		Community Gardens		Spring Camp	Burbank Housing Sites Afterschool			Technology Asset Management
Private Pool Rentals		Rosie the Trolley		Winter Camp	<b>Camps</b>			
Public Counter Customer Service		Holiday Light Tours		Specialty Day Camps	Fall Break SR City Schools			
Pool Birthday Parties		History Tours		<b>Programs &amp; Classes</b>	Fall Break Artistic Ventures			
<b>Community Aquatic Programs</b>		Rural Cemetery Tours and Events		Contract Classes – Youth & Adult	Winter Break Camp			
Lifeguard Training		Redwood Empire Live Steamers		Tots Programs	Spring Fun on the Run			
Vamos A Nadar		<b>Events &amp; Recognition</b>		Adult Sports	Recreation Sensation			
High School Swimming Programs		Merit Awards		Work Experience for Teens	Teen Camp			
Special Olympics Swimming				<b>Senior Programs</b>	<b>Specialty Workshops</b>			
Community Water Safety Committee				Daily Senior Activities – PSW	Youth Empowerment Circles			
				<b>Special Events for Seniors</b>	<b>Special Events</b>			
				Senior Expo	Pancakes with Santa			
				Octoberfest	Fairytale Ball			
				St. Patrick's Day Lunch	Spring Fest			
				Garden Party	Family BBQ's			
				Bingo Parties	Splash Bash			

---

# Questions?