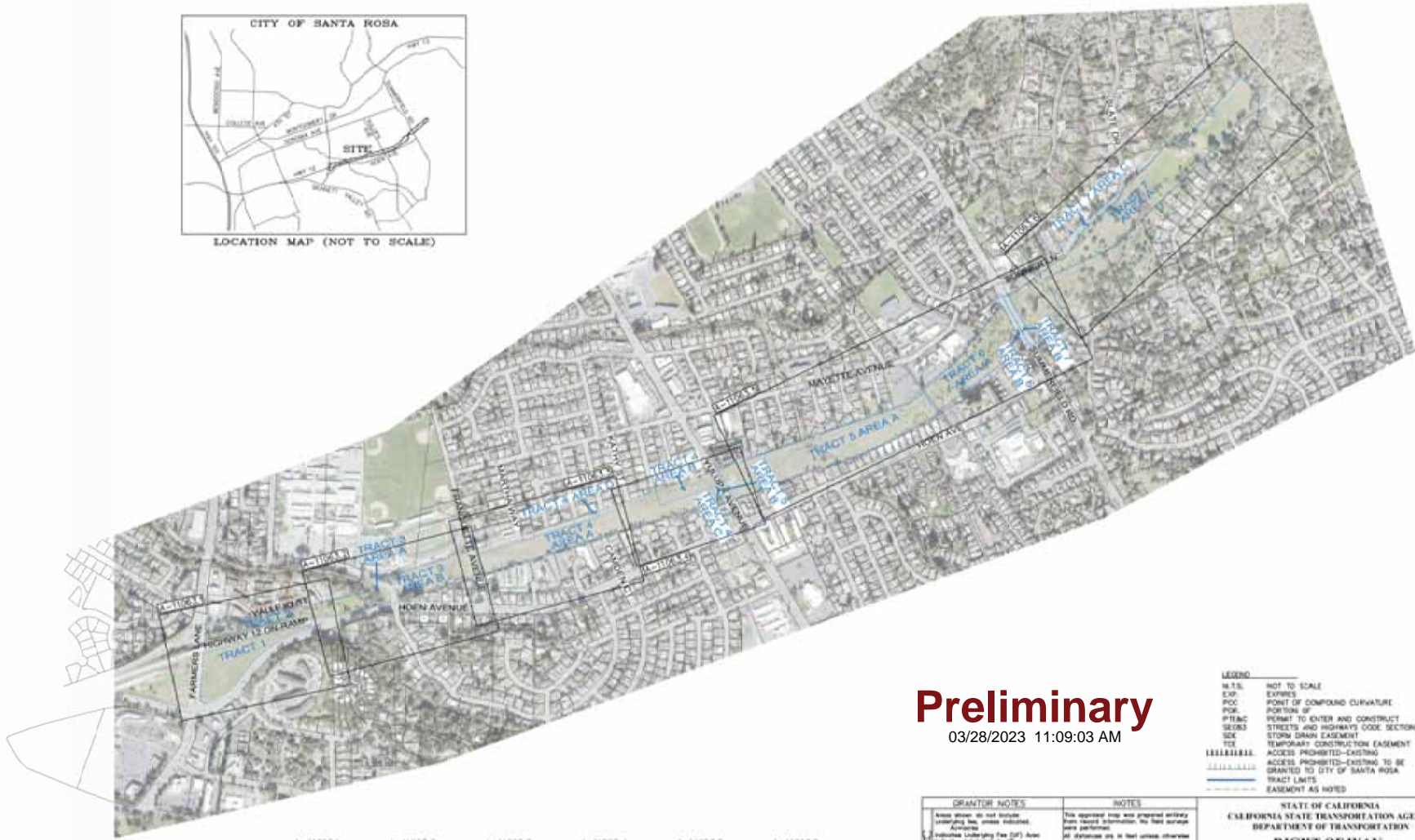


DATE	BY	REVISIONS
DATE	BY	REVISIONS
DATE	BY	REVISIONS
DATE	BY	REVISIONS
DATE	BY	REVISIONS
DATE	BY	REVISIONS



Preliminary
03/28/2023 11:09:03 AM

LEGEND

NOT TO SCALE	NOT TO SCALE
EXP	EXP
POC	POINT OF COMPOUND CURVATURE
PT/AC	PORTION OF
SE/CS	PERMIT TO ENTER AND CONSTRUCT
SE	STREETS AND HIGHWAYS CODE SECTION 63
SD	STORM DRAIN EASEMENT
TE	TEMPORARY CONSTRUCTION EASEMENT
	ACCESS PROHIBITED-EXISTING
	ACCESS PROHIBITED-EXISTING TO BE GRANTED TO CITY OF SANTA ROSA
---	TRACT LIMITS
---	EASEMENT AS NOTED

A-11063.1	A-11063.2	A-11063.3	A-11063.4	A-11063.5	A-11063.6
026725-01-01	026734-01-01	026743-01-01	024117-01-01	024112-01-01	024112-01-01
026725-01-02	026734-01-02	024108-01-01	024117-01-02	027405-01-01	027410-01-03
			024120-01-02	021965-01-01	
			024120-01-03	024117-01-01	

GRANTOR NOTES	NOTES
Access shown do not include easements, fee, unless indicated.	This appraisal map was prepared entirely from records information. No field surveys were performed.
1. Includes Underlying Fee (U) Area	All distances are in feet unless otherwise noted.
2. Includes Easements of	The coordinate system used as reference on this map is the California Coordinate System, Zone 1, NAD 83, (FPOD 2011) as indicated by county GIS data provided by the County of Sonoma.
3. Includes Rights (R)	
4. Includes (E) Area	
5. Includes Construction (C)	
6. Includes Temp. Eas (T)	
7. Includes (See Remarks)	
8. Includes (See Remarks)	
9. Includes (See Remarks)	
10. Includes (See Remarks)	
11. Includes (See Remarks)	
12. Includes (See Remarks)	
13. Includes (See Remarks)	
14. Includes (See Remarks)	
15. Includes (See Remarks)	
16. Includes (See Remarks)	
17. Includes (See Remarks)	
18. Includes (See Remarks)	
19. Includes (See Remarks)	
20. Includes (See Remarks)	
21. Includes (See Remarks)	
22. Includes (See Remarks)	
23. Includes (See Remarks)	
24. Includes (See Remarks)	
25. Includes (See Remarks)	
26. Includes (See Remarks)	
27. Includes (See Remarks)	
28. Includes (See Remarks)	
29. Includes (See Remarks)	
30. Includes (See Remarks)	
31. Includes (See Remarks)	
32. Includes (See Remarks)	
33. Includes (See Remarks)	
34. Includes (See Remarks)	
35. Includes (See Remarks)	
36. Includes (See Remarks)	
37. Includes (See Remarks)	
38. Includes (See Remarks)	
39. Includes (See Remarks)	
40. Includes (See Remarks)	
41. Includes (See Remarks)	
42. Includes (See Remarks)	
43. Includes (See Remarks)	
44. Includes (See Remarks)	
45. Includes (See Remarks)	
46. Includes (See Remarks)	
47. Includes (See Remarks)	
48. Includes (See Remarks)	
49. Includes (See Remarks)	
50. Includes (See Remarks)	
51. Includes (See Remarks)	
52. Includes (See Remarks)	
53. Includes (See Remarks)	
54. Includes (See Remarks)	
55. Includes (See Remarks)	
56. Includes (See Remarks)	
57. Includes (See Remarks)	
58. Includes (See Remarks)	
59. Includes (See Remarks)	
60. Includes (See Remarks)	
61. Includes (See Remarks)	
62. Includes (See Remarks)	
63. Includes (See Remarks)	
64. Includes (See Remarks)	
65. Includes (See Remarks)	
66. Includes (See Remarks)	
67. Includes (See Remarks)	
68. Includes (See Remarks)	
69. Includes (See Remarks)	
70. Includes (See Remarks)	
71. Includes (See Remarks)	
72. Includes (See Remarks)	
73. Includes (See Remarks)	
74. Includes (See Remarks)	
75. Includes (See Remarks)	
76. Includes (See Remarks)	
77. Includes (See Remarks)	
78. Includes (See Remarks)	
79. Includes (See Remarks)	
80. Includes (See Remarks)	
81. Includes (See Remarks)	
82. Includes (See Remarks)	
83. Includes (See Remarks)	
84. Includes (See Remarks)	
85. Includes (See Remarks)	
86. Includes (See Remarks)	
87. Includes (See Remarks)	
88. Includes (See Remarks)	
89. Includes (See Remarks)	
90. Includes (See Remarks)	
91. Includes (See Remarks)	
92. Includes (See Remarks)	
93. Includes (See Remarks)	
94. Includes (See Remarks)	
95. Includes (See Remarks)	
96. Includes (See Remarks)	
97. Includes (See Remarks)	
98. Includes (See Remarks)	
99. Includes (See Remarks)	
100. Includes (See Remarks)	

STATE OF CALIFORNIA
CALIFORNIA STATE TRANSPORTATION AGENCY
DEPARTMENT OF TRANSPORTATION

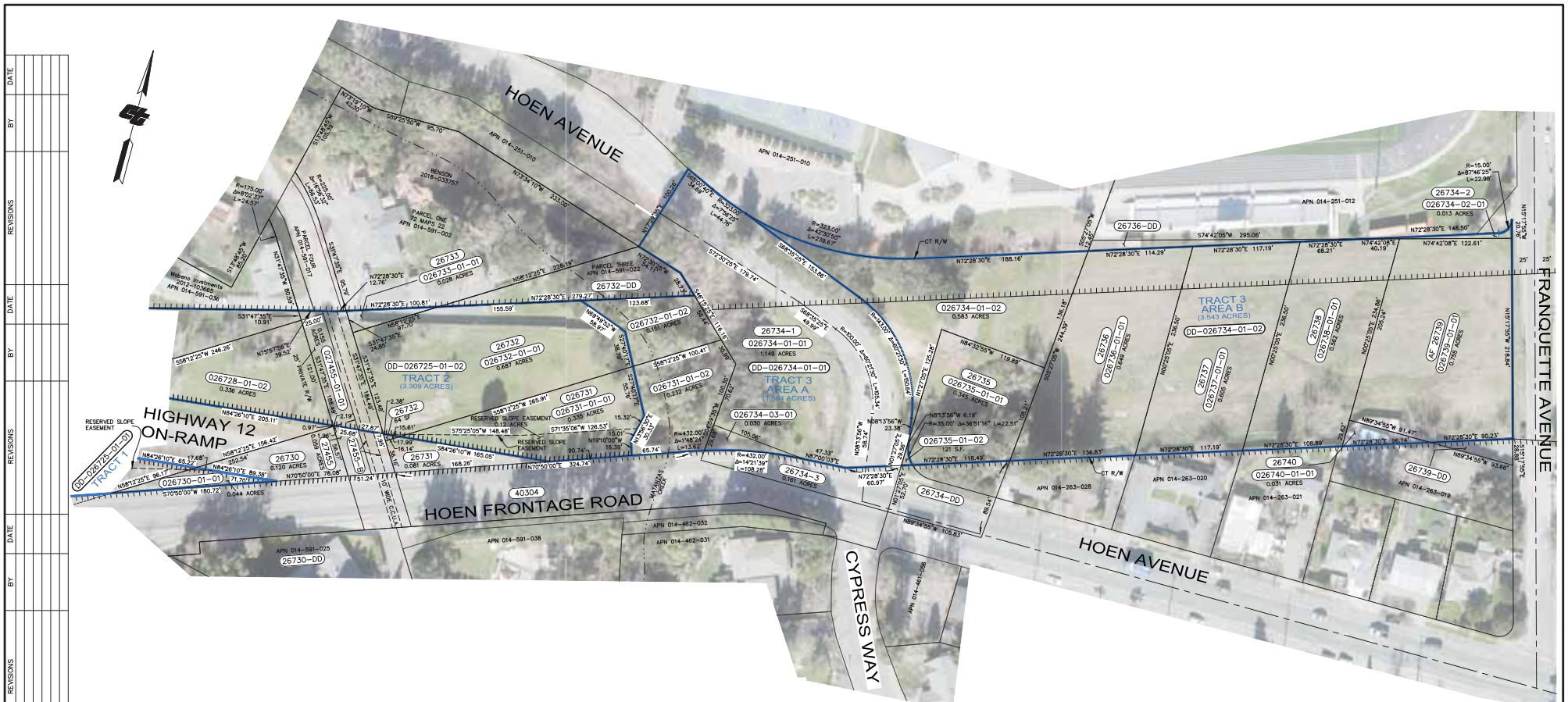
**RIGHT OF WAY
APPRAISAL MAP**
A-11063.0

FOR PREVIOUS R/W INFORMATION SEE MAPS: A-138.6 thru A-138.14 and J-184.8 thru J-184.9

FULL SIZE MAP SCALE: 1" = 400'

DRAFTED BY: _____ CHECKED BY: _____
DISTRICT COUNTY ROUTE SHEET PW SHEET NO TOTAL SHEETS
04 SON 12 _____ 1 of 7

PROJECT ID: _____



REVISIONS	DATE	BY

PARCEL #	TITLE CODE (O)	GRANTOR	AREAS (acre or as noted)			REMARKS	RECORDATION		
			TOTAL	REQUIRED (UF)	EXCESS (UF)		REMAINDER	TYPE (2)	DATE
026737-01-01	F	STATE TO CITY OF SANTA ROSA			0.605	FOR TRACT 3 AREA B			
026736-01-01	F	STATE TO CITY OF SANTA ROSA			0.649	FOR TRACT 3 AREA B			
026735-01-01	F	STATE TO CITY OF SANTA ROSA			0.345	FOR TRACT 3 AREA B			
026734-01-02	F	STATE TO CITY OF SANTA ROSA			1.21 S.F.	FOR HOEN AVENUE TRACT 3 AREA A current ROW & Creek Parcel			
026734-03-01	F	STATE TO CITY OF SANTA ROSA			0.030	FOR TRACT 3 AREA A current ROW & Creek Parcel			
026734-01-01	F	STATE TO CITY OF SANTA ROSA			1.149	FOR HOEN AVENUE TRACT 3 AREA A current ROW & Creek Parcel			
DD-026734-01-01	F	STATE TO CITY OF SANTA ROSA			0.583	FOR TRACT 3 AREA B			
DD-026734-01-02	F	STATE TO CITY OF SANTA ROSA							
026733-01-01	F	STATE TO CITY OF SANTA ROSA			0.028	FOR TRACT 2			
026732-01-01	F	STATE TO CITY OF SANTA ROSA			0.687	FOR TRACT 2			
026732-01-02	F	STATE TO CITY OF SANTA ROSA			0.151	FOR TRACT 3 AREA A current ROW & Creek Parcel			
026731-01-01	F	STATE TO CITY OF SANTA ROSA			0.335	FOR TRACT 2			
026731-01-02	F	STATE TO CITY OF SANTA ROSA			0.232	FOR TRACT 3 AREA A current ROW & Creek Parcel			
026730-01-01	F	STATE TO CITY OF SANTA ROSA			0.044	FOR TRACT 1			
026745-01-01	F	STATE TO			0.155	FOR TRACT 2			

GRANTOR NOTES	NOTES
Areas shown do not include underlying fee, unless indicated.	This appraisal map was prepared entirely from records information. No field surveys were performed.
Indicates Underlying Fee (UF) Area	All distances are in feet unless otherwise noted.
Indicates Intermediate UF	The coordinate system used as reference on this map is the California State Plane System, Zone 1, NAD 83, EPOCH 2017.50 as determined by record GIS data provided by the County of Sonoma.
Access Rights Only	
A=Access Rights Only	
E=Easement (Ease)	
TC=Temp Construction Edge	
T=Other Temp Ease (see Remarks)	
D=Other (see Remarks)	
O=Grant deed	
E=Easement deed	
AC=ACRES	
AB=ASSESSOR'S BLOCK	
R=RAIAL	
R/W=RIGHT OF WAY	
S.F.=SQUARE FEET	
UB=UTILITY BOX	
T=TOTAL	
W=Vacation	
APN=ASSESSOR'S PARCEL NUMBER	
J=Joint use agreement	
C=Common use	
U=Document of instrument number	

LEGEND

N.T.S. NOT TO SCALE
EXP. EXPIRES
P.C. POINT OF COMPOUND CURVATURE
POR. PORTION OF
P.E.A.C. PERMIT TO ENTER AND CONSTRUCT
SEC83 STREETS AND HIGHWAYS CODE SECTION 83
S.D.E. STORM DRAIN EASEMENT
T.C.E. TEMPORARY CONSTRUCTION EASEMENT
A.C.P. ACCESS PROHIBITED-EXISTING
A.C.E. ACCESS PROHIBITED-EXISTING TO BE GRANTED TO CITY OF SANTA ROSA
---TRACT LIMITS
- - - - - EASEMENT AS NOTED

STATE OF CALIFORNIA
CALIFORNIA STATE TRANSPORTATION AGENCY
DEPARTMENT OF TRANSPORTATION
**RIGHT OF WAY
APPRAISAL MAP
A-11063.2**
FOR PREVIOUS R/W INFORMATION SEE
MAP(S) R-138.6 thru R-138.14
and S-154.5 thru S-154.8
FULL SIZE MAP SCALE: 1" = 50'

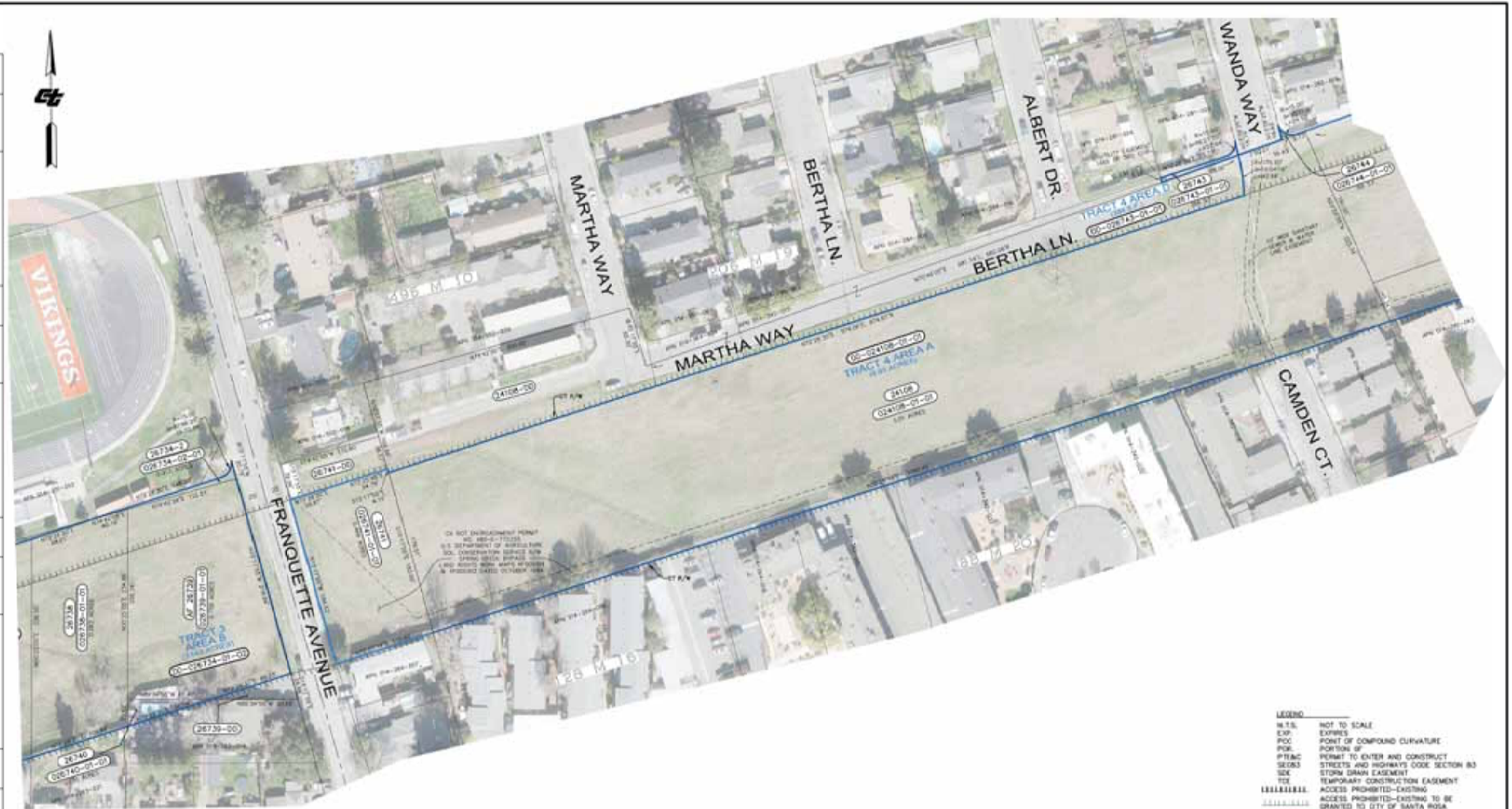
SCALE: 1" = 50'

DRAFTED BY: SON DISTRICT COUNTY ROUTE SHEET PM SHEET NO. TOTAL SHEETS
04 SON 12 3 OF 7

CHECKED BY: FAJ
APN ASSESSOR'S PARCEL NUMBER DOC.# DOCUMENT NUMBER

PROJECT ID:

DATE	REVISIONS	BY	DATE	REVISIONS	BY



PARCEL #	DOC #	GRANTOR	AREAS (acre or as noted)			REMARKS	RECORDATION		
			TOTAL	REQUIRED	[#] EXCESS		[#] REMAINDER	TYPE	DATE
06744-01-01	01	STATE TO CITY OF SANTA ROSA	5.01	0.00		FOR TRACT 4 AREA A			
06743-01-01	01	STATE TO CITY OF SANTA ROSA	5.01	0.00		TRACT 4 AREA B			
06742-01-01	01	STATE TO CITY OF SANTA ROSA	5.01	0.00					
06741-01-01	01	STATE TO CITY OF SANTA ROSA	5.01	0.00		FOR TRACT 4 AREA A			
06740-01-01	01	STATE TO CITY OF SANTA ROSA	5.01	0.00		FOR TRACT 4 AREA A			
06739-01-01	01	STATE TO CITY OF SANTA ROSA	5.01	0.00		FOR TRACT 4 AREA A			
06738-01-01	01	STATE TO CITY OF SANTA ROSA	5.01	0.00		FOR TRACT 4 AREA A			
06737-01-01	01	STATE TO CITY OF SANTA ROSA	5.01	0.00		FOR TRACT 4 AREA A			
06736-01-01	01	STATE TO CITY OF SANTA ROSA	5.01	0.00		FOR TRACT 4 AREA A			
06735-01-01	01	STATE TO CITY OF SANTA ROSA	5.01	0.00		FOR TRACT 4 AREA A			
06734-01-01	01	STATE TO CITY OF SANTA ROSA	5.01	0.00		FOR TRACT 4 AREA A			
06733-01-01	01	STATE TO CITY OF SANTA ROSA	5.01	0.00		FOR TRACT 4 AREA A			
06732-01-01	01	STATE TO CITY OF SANTA ROSA	5.01	0.00		FOR TRACT 4 AREA A			
06731-01-01	01	STATE TO CITY OF SANTA ROSA	5.01	0.00		FOR TRACT 4 AREA A			
06730-01-01	01	STATE TO CITY OF SANTA ROSA	5.01	0.00		FOR TRACT 4 AREA A			
06729-01-01	01	STATE TO CITY OF SANTA ROSA	5.01	0.00		FOR TRACT 4 AREA A			
06728-01-01	01	STATE TO CITY OF SANTA ROSA	5.01	0.00		FOR TRACT 4 AREA A			

GRANTOR NOTES	NOTES
<p>Areas shown do not include encroachments, easements, or other interests.</p> <p>Encroachments, easements, or other interests shall be shown as of the date of recording.</p> <p>Encroachment (Easement) Fee (EF) and Encroachment (Easement) Fee (EF) shall be determined by the City of Santa Rosa.</p> <p>Encroachment (Easement) Fee (EF) shall be determined by the City of Santa Rosa.</p> <p>Encroachment (Easement) Fee (EF) shall be determined by the City of Santa Rosa.</p> <p>Encroachment (Easement) Fee (EF) shall be determined by the City of Santa Rosa.</p>	<p>This appraisal map was prepared entirely from records information. No field surveys were performed.</p> <p>All distances are in feet unless otherwise noted.</p> <p>The coordinate system used as reference on this map is the California Coordinate System, Zone 1, NAD 83, (SP08 2007) as established by record GIS data provided by the County of Santa Rosa.</p>

LEGEND	NOT TO SCALE
N.T.S.	NOT TO SCALE
EXP	EXPLORE
POC	POINT OF COMPOUND CURVATURE
PER	PERMIT TO ENTER AND CONSTRUCT
SECS	STREETS AND HIGHWAYS CODE SECTION 83
STX	STORM DRAIN CASEMENT
TRC	TEMPORARY CONSTRUCTION EASEMENT
APR	ACCESS PROHIBITED—EXISTING
APR	ACCESS PROHIBITED—EXISTING TO BE GRANTED TO CITY OF SANTA ROSA
---	TRACT LIMITS
---	EASEMENT AS NOTED

STATE OF CALIFORNIA
CALIFORNIA STATE TRANSPORTATION AGENCY
DEPARTMENT OF TRANSPORTATION

RIGHT OF WAY APPRAISAL MAP
A-11063.3

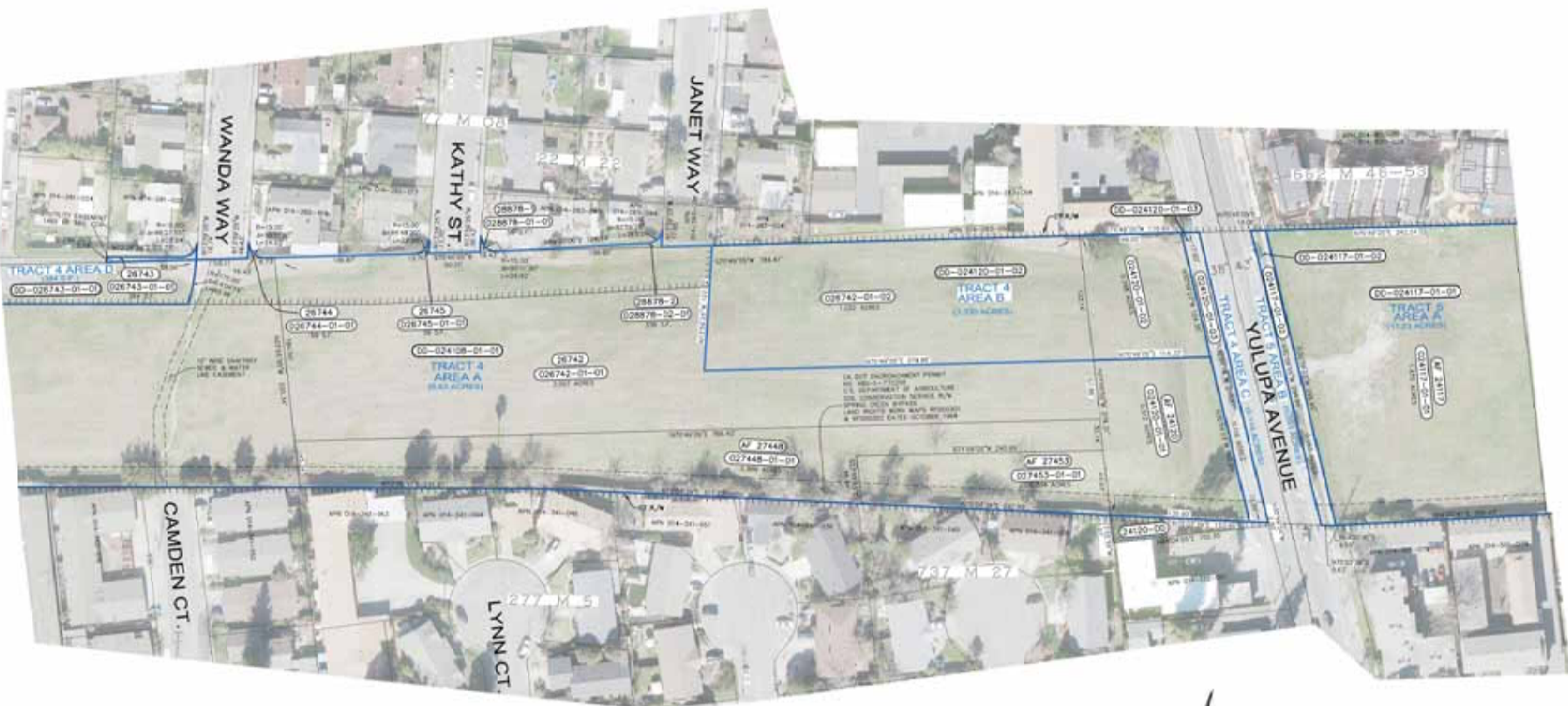
FOR PREVIOUS R/W INFORMATION SEE MAPS: A-138.8 thru A-138.14 and A-138.5 thru A-138.8

FULL SIZE MAP SCALE: 1" = 50'

1" = 50'

DISTRICT	COUNTY	ROUTE	SHEET NO.	TOTAL SHEETS
04	SEN	12		4 of 7

REVISIONS		
DATE	BY	REVISIONS



- LEGEND**
- N.T.S. NOT TO SCALE
 - EXP. EXPIRES
 - POC. POINT OF COMPOUND CURVATURE
 - POE. PORTION OF
 - P.T.R.A.C. PERMIT TO ENTER AND CONSTRUCT STREETS AND HIGHWAYS CODE SECTION 63
 - SE&S. SEVERITY OF EASEMENT
 - TCI. TEMPORARY CONSTRUCTION EASEMENT
 - ||||| ACCESS PROHIBITED-EXISTING
 - ||||| ACCESS PROHIBITED-EXISTING TO BE GRANTED TO CITY OF SANTA ROSA
 - TRACT LIMITS
 - EASEMENT AS NOTED

STATE OF CALIFORNIA
CALIFORNIA STATE TRANSPORTATION AGENCY
DEPARTMENT OF TRANSPORTATION

RIGHT OF WAY APPRAISAL MAP

A-11063.4

FOR PREVIOUS R/W INFORMATION SEE MAPS: R-136 & R/W-136.14 and S-184 & R/W-S-184.8

FULL SIZE MAP SCALE, 1" = 50'

DRAFTED BY: [] CHECKED BY: []
DISTRICT: [] COUNTY: [] ROUTE: [] SHEET: [] TOTAL SHEETS: 5 OF 7

PROJECT # []

GRANTOR NOTES	NOTES
Areas shown do not include existing fee, unless indicated.	This appraisal map was prepared utilizing the latest information the files archive were performed.
Individual Underlying Fee (U.F.) Area	All distances are in feet unless otherwise noted.
Individual Underlying Fee (U.F.) Area	The coordinate system used as reference on this map is the California Coordinate System, Zone 1, NAD 83, (SR93N 2007) as established by county GIS data provided by the County of Sonoma.
Individual Underlying Fee (U.F.) Area	

LEGEND	
CD	DIMENSION POINT
AC	ACRES
AB	ASSASSINATOR'S BLOCK
R.A.R.A.	RAI
R/W	RIGHT OF WAY
S.U.F.	SQUARE FEET
UB	UTILITY BOX
T	TOTAL
APN	ASSASSINATOR'S PARCEL NUMBER
DOC#	DOCUMENT NUMBER

PARCEL #	APN	GRANTOR	AREAS (acre or sq. ft. noted)				REMARKS	RECORDATION					
			TOTAL	REQUIRED	[P] EXCESS	[U] REMAINDER		TYPE	DATE	DOC #	Q		
024117-01-01		F STATE TO CITY OF SANTA ROSA			1.385		FOR TRACT 5 AREA A						
00-024117-01-01		F STATE TO CITY OF SANTA ROSA			0.093		YULUPA AVE. FOR TRACT 5 AREA B						
00-024117-01-02		F STATE TO CITY OF SANTA ROSA			0.512		FOR TRACT 4 AREA A						
024120-01-01		F STATE TO CITY OF SANTA ROSA			0.258		FOR TRACT 4 AREA A						
00-024120-01-02		F STATE TO CITY OF SANTA ROSA			0.115		YULUPA AVE. TRACT 4 AREA D						
024120-01-03		F STATE TO CITY OF SANTA ROSA			0.304		FOR TRACT 4 AREA A						
00-024120-01-03		F STATE TO CITY OF SANTA ROSA			0.889		FOR TRACT 4 AREA A						
027448-01-01		F STATE TO CITY OF SANTA ROSA			2.037		FOR TRACT 4 AREA B						
026742-01-01		F STATE TO CITY OF SANTA ROSA			1.032		FOR TRACT 4 AREA A						
026742-01-02		F STATE TO CITY OF SANTA ROSA			59 SF		FOR TRACT 4 AREA A						
028878-01-01		F STATE TO CITY OF SANTA ROSA			334 SF		FOR TRACT 4 AREA A						
028878-02-01		F STATE TO CITY OF SANTA ROSA			31 SF		FOR TRACT 4 AREA A						
026742-01-01		F STATE TO CITY OF SANTA ROSA					FOR TRACT 4 AREA A						

DATE	REVISIONS	BY	DATE	REVISIONS	BY	DATE	REVISIONS	BY



PARCEL #	ROLE	GRANTOR	AREAS (acre or as noted)			REMARKS	RECORDATION		
			TOTAL	REQUIRED (#)	EXCESS		TYPE	DATE	BOOK #
024112-01-01	F	STATE TO CITY OF SANTA ROSA	2.324			FOR TRACT 5 AREA A	Y-1	12-22-59	1722 DR 208
00-0241-01-01	F	STATE TO CITY OF SANTA ROSA	0.324			SUMMERFIELD RD, FOR TRACT 5 AREA B			
024112-01-02	F	STATE TO CITY OF SANTA ROSA	0.626			FOR TRACT 5 AREA B			
027407-01-01	F	STATE TO CITY OF SANTA ROSA	0.118			FOR TRACT 5 AREA A			
027407-01-02	F	STATE TO CITY OF SANTA ROSA	0.877			FOR TRACT 5 AREA A			
00-0274-01-01	F	STATE TO CITY OF SANTA ROSA	0.118			SUMMERFIELD RD, FOR TRACT 5 AREA C			
027407-01-03	F	STATE TO CITY OF SANTA ROSA	1.107			FOR TRACT 5 AREA A			
027408-01-01	F	STATE TO CITY OF SANTA ROSA	0.155			SUMMERFIELD RD, FOR TRACT 5 AREA C			
021565-01-01	F	STATE TO CITY OF SANTA ROSA	4.011			FOR TRACT 5 AREA A			
05-0215-01-01	F	STATE TO CITY OF SANTA ROSA	0.075			FOR TRACT 5 AREA A			
026757-01-01	F	STATE TO CITY OF SANTA ROSA	3.826			FOR TRACT 5 AREA A			
026757-01-02	F	STATE TO CITY OF SANTA ROSA	0.075			FOR TRACT 5 AREA A			
026754-01-01	F	STATE TO CITY OF SANTA ROSA	0.075			FOR TRACT 5 AREA A			
026754-01-02	F	STATE TO CITY OF SANTA ROSA	0.075			FOR TRACT 5 AREA A			
026754-01-03	F	STATE TO CITY OF SANTA ROSA	0.075			FOR TRACT 5 AREA A			
026754-01-04	F	STATE TO CITY OF SANTA ROSA	0.075			FOR TRACT 5 AREA A			
026754-01-05	F	STATE TO CITY OF SANTA ROSA	0.075			FOR TRACT 5 AREA A			
026754-01-06	F	STATE TO CITY OF SANTA ROSA	0.075			FOR TRACT 5 AREA A			
026754-01-07	F	STATE TO CITY OF SANTA ROSA	0.075			FOR TRACT 5 AREA A			
026754-01-08	F	STATE TO CITY OF SANTA ROSA	0.075			FOR TRACT 5 AREA A			
026754-01-09	F	STATE TO CITY OF SANTA ROSA	0.075			FOR TRACT 5 AREA A			
026754-01-10	F	STATE TO CITY OF SANTA ROSA	0.075			FOR TRACT 5 AREA A			
026754-01-11	F	STATE TO CITY OF SANTA ROSA	0.075			FOR TRACT 5 AREA A			
026754-01-12	F	STATE TO CITY OF SANTA ROSA	0.075			FOR TRACT 5 AREA A			
026754-01-13	F	STATE TO CITY OF SANTA ROSA	0.075			FOR TRACT 5 AREA A			
026754-01-14	F	STATE TO CITY OF SANTA ROSA	0.075			FOR TRACT 5 AREA A			
026754-01-15	F	STATE TO CITY OF SANTA ROSA	0.075			FOR TRACT 5 AREA A			
026754-01-16	F	STATE TO CITY OF SANTA ROSA	0.075			FOR TRACT 5 AREA A			
026754-01-17	F	STATE TO CITY OF SANTA ROSA	0.075			FOR TRACT 5 AREA A			
026754-01-18	F	STATE TO CITY OF SANTA ROSA	0.075			FOR TRACT 5 AREA A			
026754-01-19	F	STATE TO CITY OF SANTA ROSA	0.075			FOR TRACT 5 AREA A			
026754-01-20	F	STATE TO CITY OF SANTA ROSA	0.075			FOR TRACT 5 AREA A			

GRANTOR NOTES

Areas shown do not include existing easements, encroachments, or other interests. All distances are in feet unless otherwise noted.

FILE NOTES

Enclosure (East)
 Top Layer Construction Case
 (Other Party Case Remarks)
 (Other Case Remarks)

LEGEND

○ DIMENSION POINT
 AC ACRES
 AB ASSessor'S BLOCK
 RADIAL
 R/W RIGHT OF WAY
 S/F SQUARE FEET
 UB UTILITY BOX
 (T) TOTAL
 APN ASSessor'S PARCEL NUMBER
 DOC# DOCUMENT NUMBER

LEGEND

N.T.S. NOT TO SCALE
 EXP. EXPIRES
 POC POINT OF CURVATURE
 POR PORTION OF
 P/TAC PERMIT TO ENTER AND CONSTRUCT
 SECS STREETS AND HIGHWAYS CODE SECTION 63
 SDX STORM DRAIN CASEMENT
 TC TEMPORARY CONSTRUCTION EASEMENT
 ACES ACCESS PROHIBITED-EXISTING
 ACES ACCESS PROHIBITED-EXISTING TO BE GRANTED TO CITY OF SANTA ROSA
 TRACT LIMITS
 EASEMENT AS NOTED

STATE OF CALIFORNIA
 CALIFORNIA STATE TRANSPORTATION AGENCY
 DEPARTMENT OF TRANSPORTATION

**RIGHT OF WAY
 APPRAISAL MAP
 A-11063.5**

FOR PREVIOUS R/W INFORMATION SEE
 MAPS: A-138.6 thru A-138.14
 and A-138.8 thru A-138.9

PLAT SIZE MAP SCALE: 1" = 100'

1" = 100'

DRAFTED BY: _____ CHECKED BY: _____
 DISTRICT COUNTY ROUTE SHEET NO. SHEET NO. TOTAL SHEETS
 04 05N 12 _____ 6 of 7

REVISIONS	BY	DATE	REVISIONS	BY	DATE	REVISIONS	BY	DATE



LEGEND

---	NOT TO SCALE
EXP	EXP. POINT OF COMPOUND CURVATURE
POC	POINT OF COMPOUND CURVATURE
PT&C	PERMIT TO ENTER AND CONSTRUCT
SECS	STREETS AND HIGHWAYS CODE SECTION 63
ST&E	STORM DRAIN EASEMENT
TC	TEMPORARY CONSTRUCTION EASEMENT
	ACCESS PROHIBITED-EXISTING
---	ACCESS PROHIBITED-EXISTING TO BE GRANTED TO CITY OF SANTA ROSA
---	TRACT LIMITS
---	EASEMENT AS NOTED

GRANTOR NOTES

Areas shown do not include encroaching easement information.

Subtract Underlying Fee (UF) Area (including encumbrances of other parties).

FILE NOTES:

Acres/Block Rights Only

Encumbrance (Eas)

Full-Block Construction Case (Full-Block Temp Case (Use Remarks))

Other (Use Remarks)

File:

Acres/Block

Encumbrance (Eas)

Full-Block Construction Case (Full-Block Temp Case (Use Remarks))

Other (Use Remarks)

File:

Acres/Block

Encumbrance (Eas)

Full-Block Construction Case (Full-Block Temp Case (Use Remarks))

Other (Use Remarks)

NOTES

This appraisal map was prepared entirely from the best information available and does not constitute a warranty of any kind.

All distances are in feet unless otherwise noted.

The coordinate system used as reference on this map is the California Coordinate System, Zone 10, NAD 83, (SP08 2011) as established by county GIS data provided by the County of Santa Rosa.

LEGEND

○	DIMENSION POINT
AC	ACRES
AB	ASSASSINATOR'S BLOCK
RA&L	RASHER
R/W	RIGHT OF WAY
S/F	SQUARE FEET
UB	UTILITY BOX
UT	UTILITY
(T)	TOTAL
APR	ASSASSINATOR'S PARCEL NUMBER
DOC#	DOCUMENT NUMBER

STATE OF CALIFORNIA
CALIFORNIA STATE TRANSPORTATION AGENCY
DEPARTMENT OF TRANSPORTATION

**RIGHT OF WAY
APPRAISAL MAP
A-11063.6**

FOR PREVIOUS R/W INFORMATION SEE MAPS: A-138.6 thru A-138.14 and A-138.8 thru A-138.9

FULL SIZE MAP SCALE: 1" = 100'

DRAFTED BY: _____ CHECKED BY: _____

DISTRICT COUNTY ROUTE SHEET PM SHEET NO. TOTAL SHEETS

04 00N 12 7 of 7

PROJECT ID: _____

PARCEL #	FILE DOC #	GRANTOR	AREAS (acre or sq. ft. noted)				REMARKS	RECORDATION		
			TOTAL	REQUIRED (P)	EXCESS (P)	REMANOIN		TYPE	DATE	DOC #
00-024112-01-01	F	STATE TO CITY OF SANTA ROSA	0.511				R/W TRACT 7 AREA A			
024118-01-02	F	STATE TO CITY OF SANTA ROSA	0.348				R/W TRACT 7 AREA A			
027410-01-03	F	STATE TO CITY OF SANTA ROSA	1.078				SUMNER LN, TRACT 7 AREA C, northern R/W parcel			
00-027410-01-03	F	STATE TO CITY OF SANTA ROSA	0.017				R/W TRACT 7 AREA A			
024116-01-01	F	STATE TO CITY OF SANTA ROSA	0.587				R/W TRACT 7 AREA A			