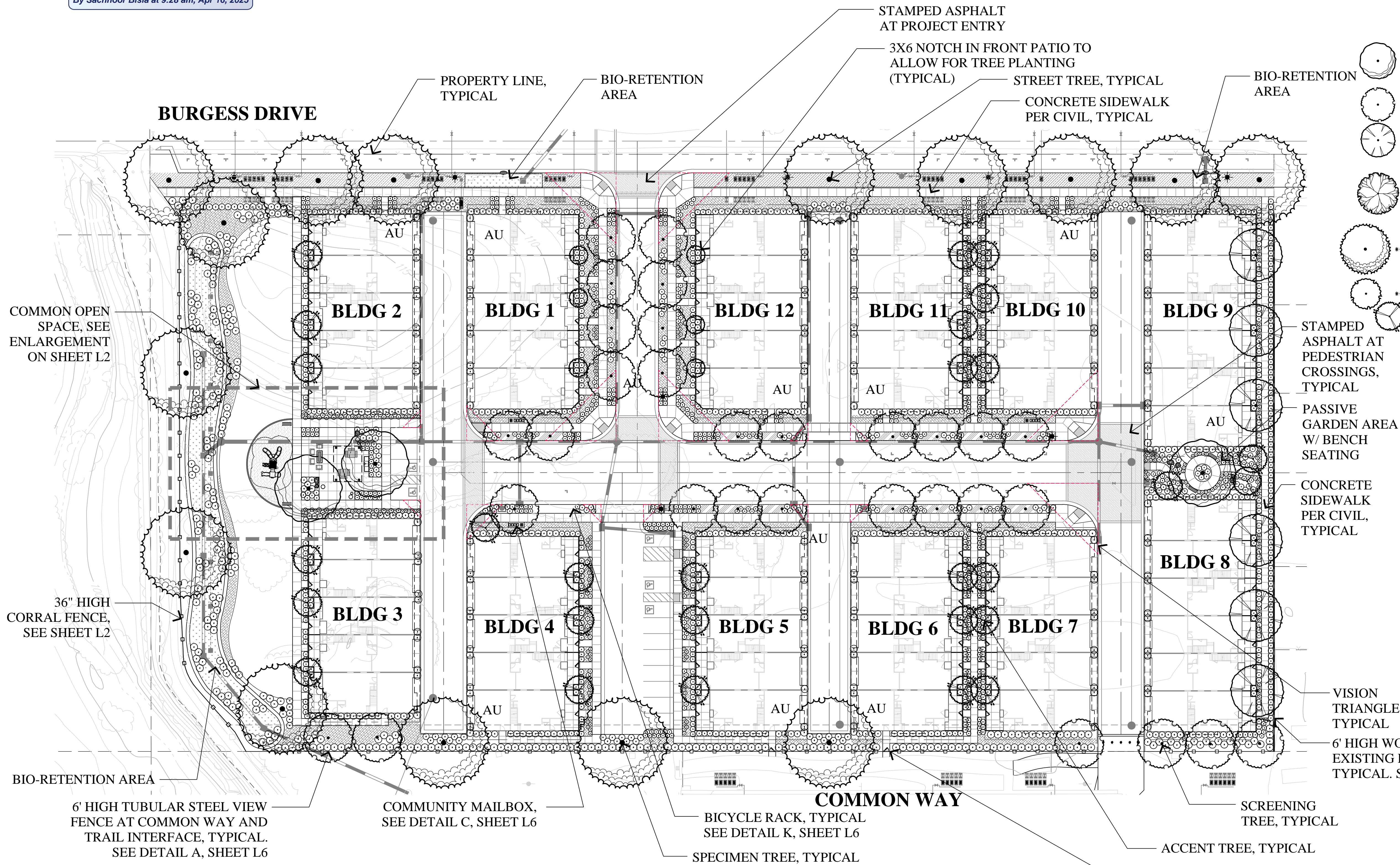




RECEIVED

By Sachnoor Bisla at 9:28 am, Apr 16, 2025



PROPOSED TREE PALETTE				
BOTANICAL NAME	COMMON NAME	HEIGHT / SPREAD	SIZE	WATER USE
SPECIMEN TREE				
ACER F. 'A.B.'	AUTUMN BLAZE MAPLE	50'/40"	15 GALLON	MEDIUM
SCREENING TREE				
LAURUS N. 'SARATOGA'	SWEET BAY	30'/30'	15 GALLON	LOW
TRISTANIA LAURINA 'ELEGANT'	WATER GUM	40'/20'	15 GALLON	LOW
STREET TREES				
PISTACHIA CHINENSIS	CHINESE PISTACHE	30'-60'/30'-60'	15 GALLON	LOW
** QUERCUS LOBATA	VALLEY OAK	60'-100'/50'	15 GALLON	LOW
ACCENT TREES				
** CERCIS OCCIDENTALIS	WESTERN REDBUD	15'/15'	15 GALLON	LOW
LAGERSTROEMIA F. 'MUSKOGEE'	GRAPE MYRTLE	20'/15'	15 GALLON	LOW
** NATIVE PLANT SPECIES				

CONCEPTUAL LANDSCAPE STATEMENT

REGIONAL AND MICRO-CLIMATE CONDITIONS, SOLAR ORIENTATION AND SOIL CONDITIONS WILL BE TAKEN INTO ACCOUNT WITH REGARDS TO PLANT SELECTION AND PLACEMENT. THE PLANT PALETTE PROVIDES MANY PLANTS WITH VARYING GROWTH HABITS, PREFERENCES AND TOLERANCES, SO SELECTION OF JUST THE RIGHT PLANT SHOULD NOT BE DIFFICULT. A HIGH PERCENTAGE OF PLANTS SELECTED WILL BE DROUGHT-TOLERANT AND APPROPRIATE FOR THE CLIMATE. THIS PALETTE, ALONG WITH A DRIP IRRIGATION SYSTEM WILL CONSERVE WATER WITHIN THE PROJECT.

BY SPECIFYING PLANTS WHICH REQUIRE LITTLE TO NO PRUNING, THE GREEN WASTE WILL BE REDUCED. PLANTS SELECTED WILL COMPLEMENT THE ARCHITECTURE AND THE OVERALL VISION OF THE STONEBRIDGE COMMUNITY. THE PLANT PALETTE WAS DERIVED FROM THE RECOMMENDED PLANT LIST ALONG WITH OTHERS THAT FIT THE DESIGN AESTHETIC.

ENTRYWAYS AND PICTURE WINDOWS WILL BE FRAMED BY SPECIMEN SHRUBS AND NODES WILL HAVE ACCENT PLANTINGS. PLANT SPECIES WHICH ENHANCE THE ARCHITECTURAL ELEVATIONS SHALL BE USED. A DIVERSE USE OF PLANT SPECIES WILL DISPLAY VARIOUS TEXTURES, FORMS, FOLIAGE COLOR, AND FLOWERS; WILL CREATE A BEAUTIFUL LANDSCAPE TO CONTRIBUTE AESTHETICALLY TO THE SURROUNDING NEIGHBORHOODS.

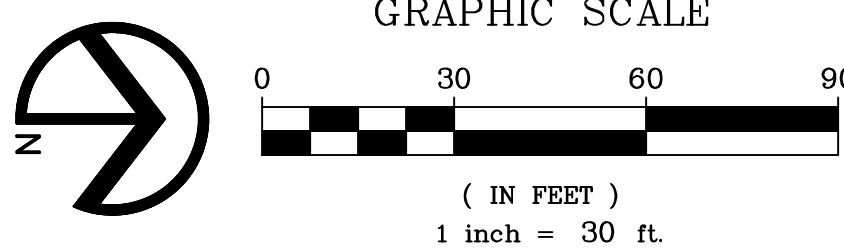
THE TREES HAVE BEEN SELECTED TO HAVE NON-INVASIVE ROOT SYSTEMS, AND PLACED WITH ADEQUATE SETBACKS TO ENSURE NO CONFLICT WITH UTILITIES AND HARDSCAPE, OR CONFLICT WITH ANY SITE LINE DISTANCES. ROOT BARRIERS WILL BE INSTALLED ON ALL TREES NEAR PAVING AND UTILITIES. WHERE FEASIBLE, TREES HAVE BEEN PLACED TO MITIGATE SOLID BUILDING SURFACES AND FENCES. TALLER SHRUBS WILL ALSO BE LOCATED AT SOLID BUILDING SURFACES AND FENCES, WHILE LOWER SHRUBS WILL BE LOCATED WHERE GROUND LEVEL WINDOWS AND ARCHITECTURAL FEATURES OCCUR, AND AT CORNERS TO MAINTAIN SITE LINE DISTANCES.

THE IRRIGATION SYSTEM WILL USE WEATHER-BASED CONTROLLERS TO CONSERVE THE USE OF WATER. SPRAY IRRIGATION WILL ONLY OCCUR AT TURF AREAS, AND SPRAY HEADS WITH LOW PRECIPITATION RATES WILL BE USED TO MINIMIZE RUNOFF, EROSION AND OVERSPRAY. THE BALANCE OF THE PLANTING AREAS WILL BE IRRIGATED USING DRIP IRRIGATION METHODS. THE TREES WILL BE ON SEPARATE VALVES AND WILL BE IRRIGATED WITH BUBBLERS. SHRUBS WILL BE HYDROZONED ACCORDING TO THEIR WATER REQUIREMENTS AND MICROCLIMATES.

IT IS OUR INTENT TO SPECIFY IN THE LANDSCAPE CONSTRUCTION DOCUMENTS THE USE OF RECYCLED MATERIALS SUCH AS RECYCLED WOOD MULCH, INGREDIENTS WITHIN THE CONCRETE, FORMWORK, SITE FURNITURE, ETC. IT IS OUR INTENT TO STOCKPILE THE TOPSOIL FOR RE-USE, UNLESS SOIL TESTS DEEM THE SOIL INADEQUATE AND RECOMMEND IMPORTED SOIL. WE INTEND TO RECYCLE A MINIMUM OF 50% OF THE LANDSCAPE CONSTRUCTION AND GREEN WASTES.

NOTES:

1. ALL TREES SHALL BE PLANTED AND STAKED PER CITY STANDARDS.
2. TREES BE PLANTED WITHIN 3' OF HARDSCAPE ELEMENTS, SHALL HAVE A LINEAR ROOT BARRIER INSTALLED ADJACENT TO THE HARDSCAPE ELEMENT AT TIME OF TREE PLANTING.
3. LANDSCAPE AND IRRIGATION SHALL COMPLY WITH CITY'S CURRENT WATER-EFFICIENT LANDSCAPE ORDINANCE.
4. ALL PLANTING AREAS SHALL BE AUTOMATICALLY IRRIGATED PER CITY STANDARDS. USING LOW-FLOW SPRAY, BUBBLERS OR DRIP METHODS.
5. ALL PLANTING AREAS SHALL BE MULCHED TO A MINIMUM DEPTH OF 3".

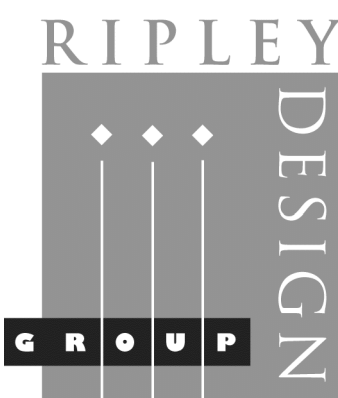


NOTES:

STREET TREES WILL BE REQUIRED AND PLANTED BY THE DEVELOPER. SELECTION WILL BE MADE FROM THE CITY'S APPROVED MASTER STREET TREE LIST AND INSPECTED BY THE PARKS DIVISION MAY OCCUR. PLANTING SHALL BE DONE IN ACCORDANCE WITH THE CITY STANDARDS AND SPECIFICATIONS FOR PLANTING PARKWAY TREES. ANY SUBSTITUTIONS IN TREE SELECTION MUST BE FROM THE APPROVED MASTER STREET TREE LIST.

TREE MITIGATION NOTES:

ALL ONSITE EXISTING TREES ARE PROPOSED TO BE REMOVED. EIGHTY-EIGHT (88) FIFTEEN-GALLON TREES ARE PROPOSED FOR MITIGATION. SEE SHEET L8 FOR TREE MITIGATION INFORMATION. ADDITIONAL MITIGATION WILL BE SATISFIED BY IN-LIEU FEES.



LANDSCAPE ARCHITECTURE
LAND PLANNING
1615 BONANZA STREET
SUITE 314
WALNUT CREEK, CA 94596
TEL: 925.938.7377
FAX: 925.938.7436

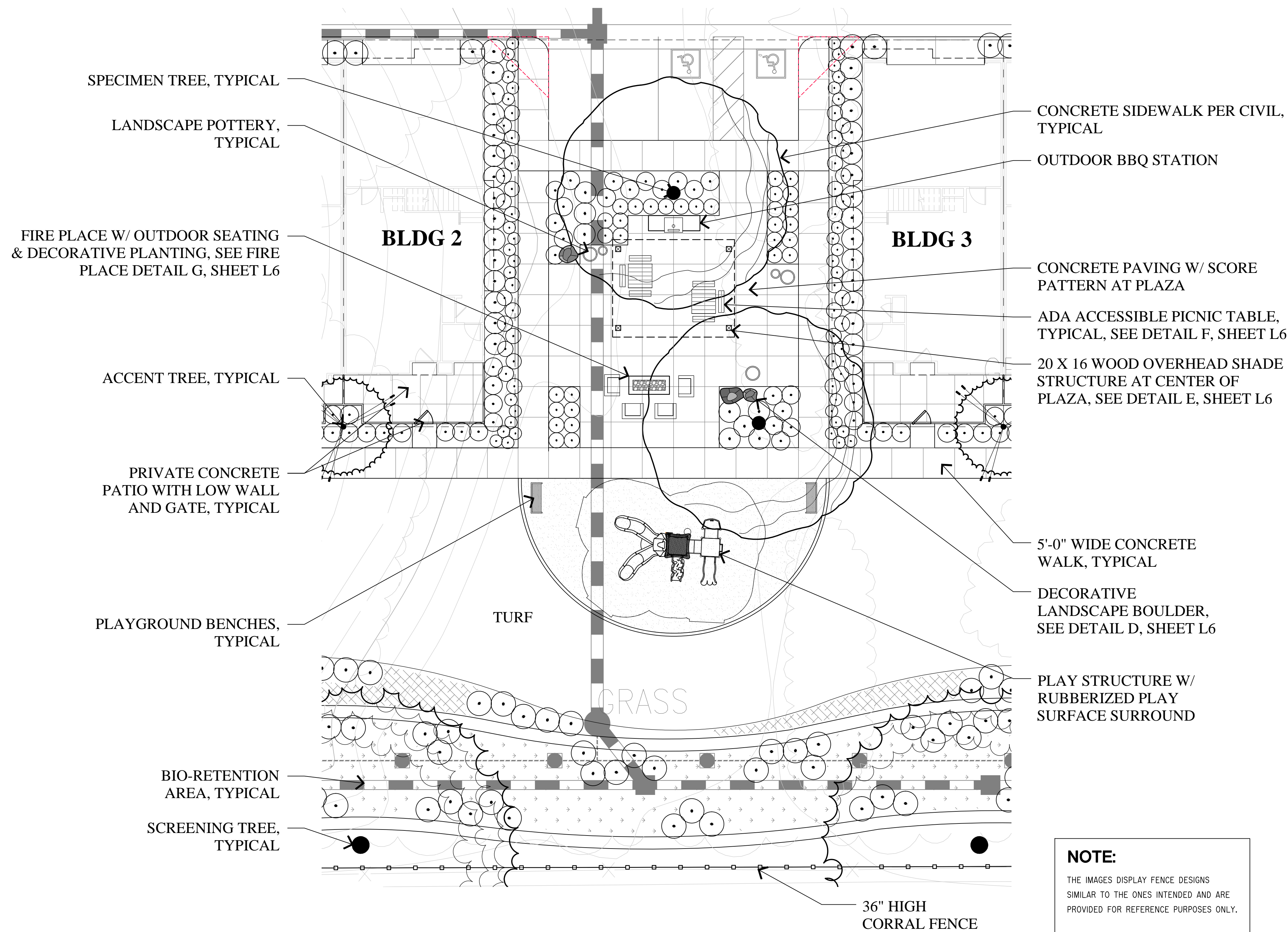
RYDER HOMES

Preliminary Landscape Plan

Meadow Creek
Townhomes
Santa Rosa, California

April 14, 2025

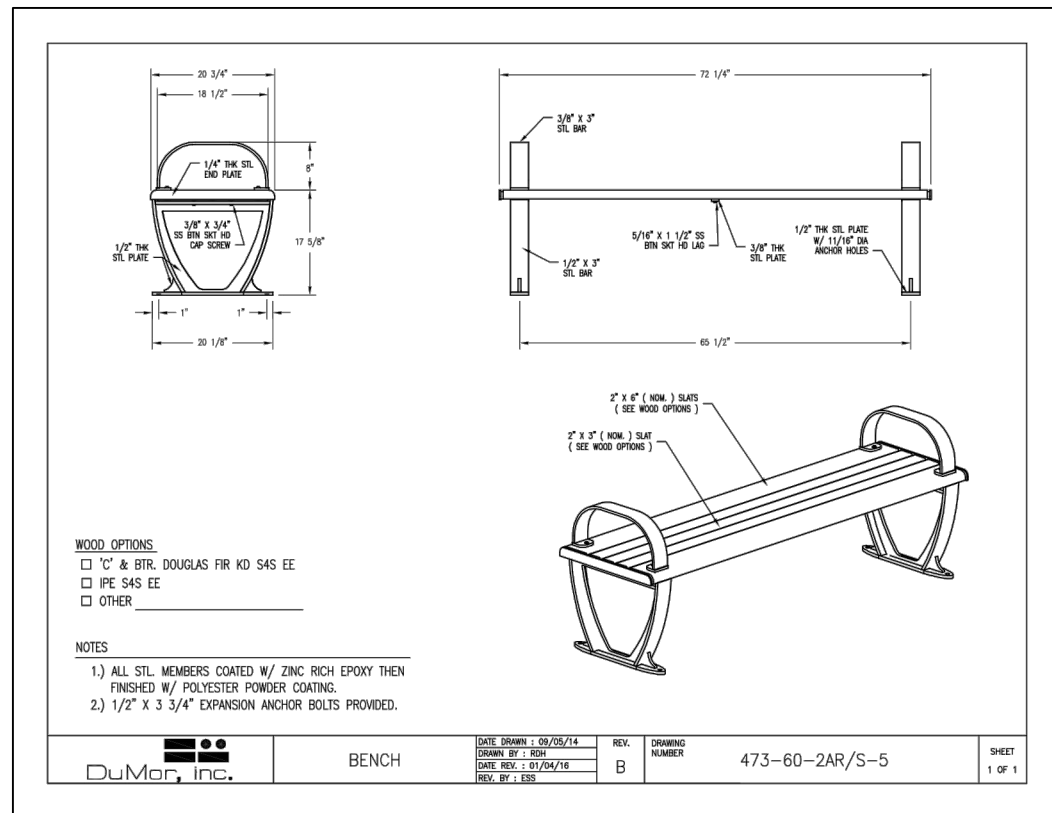
L1



WOOD NEIGHBOR FENCE



TUBULAR STEEL VIEW FENCE



PLAYGROUND BENCH

MODEL: 473-60-2AR/S-5
AVAILABLE FROM: WWW.DUMOR.COM (800-598-4018)

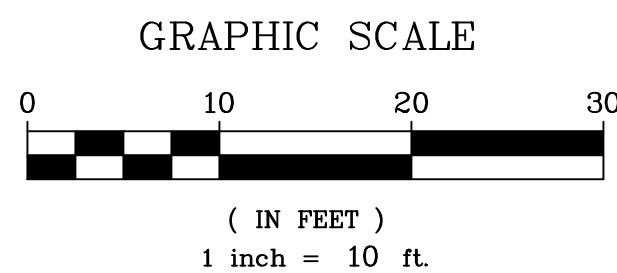
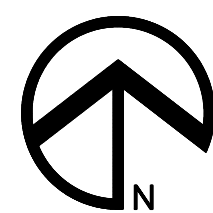


PLAY STRUCTURE

MODEL: MARTIN'S FERRY #PT20229
AVAILABLE FROM: WWW.GAMETIME.COM TEL:(800)-235-2440



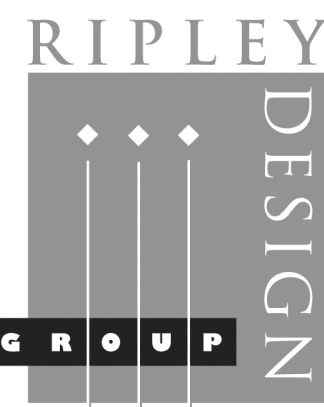
CORRAL FENCE



RYDER HOMES



Preliminary Landscape Enlargement Common Open Space



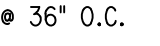


**LANDSCAPE ARCHITECTURE
LAND PLANNING**
1615 BONANZA STREET
SUITE 314
WALNUT CREEK, CA 94596
TEL: 925.938.7377
FAX: 925.9387436

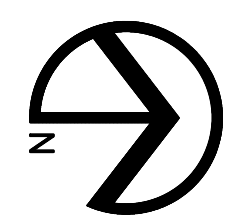
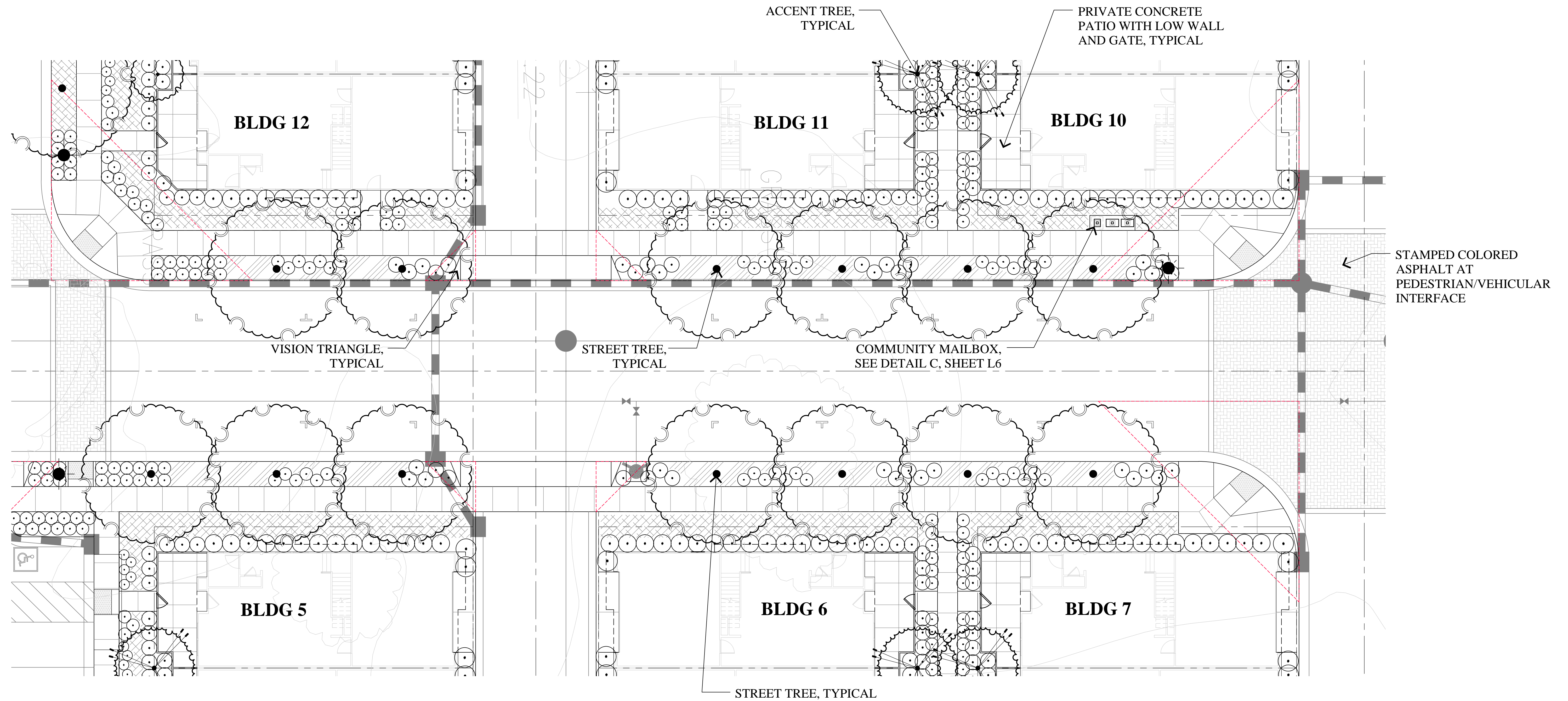
**Meadow Creek
Townhomes**
Santa Rosa, California

April 14, 2025



PRELIMINARY PROPOSED PLANT PALETTE

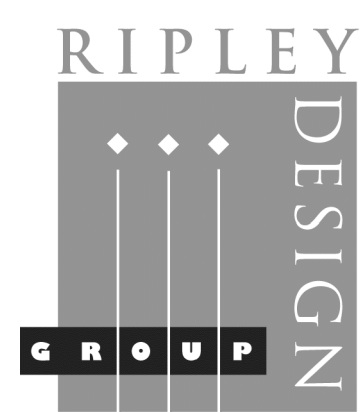
BOTANICAL NAME	COMMON NAME	SIZE	WATER USE	BOTANICAL NAME	COMMON NAME	SIZE	WATER USE	COMMON NAME				SIZE	WATER USE	
SHRUBS				SHRUBS & GROUNDCOVERS - BIO-RETENTION AREA										
ABELIA G. 'PROSTRATA'	DWARF GLOSSY ABELIA	5 GALLON	MEDIUM	LANTANA MONTEVIDENSIS	TRAILING LANTANA	1 GALLON	LOW		** BAC PIL	BACCHARIS PILLULARIS	COYOTE BUSH	5 GALLON	LOW	
AGAPANTHUS 'PETER PAN'	LILY-OF-THE-NILE	1 GALLON	MEDIUM	LAVATERA MARITIMA	TREE MALLOW	5 GALLON	LOW		** IRI DOU	IRIS DOUGLASIANA	PACIFIC COAST IRIS	1 GALLON	LOW	
AGAPANTHUS 'TINKERBELL'	LILY-OF-THE-NILE	1 GALLON	MEDIUM	LAVANDULA A. 'MUNSTEAD'	ENGLISH LAVANDER	1 GALLON	LOW		** MUH RIG	MUHLENBERGIA RIGENS	DEERGRASS	5 GALLON	LOW	
ARBUTUS U. 'COMPACTA'	COMPACT STRAWNERRY TREE	5 GALLON	LOW	LAVANDULA A. 'STOECHES'	JAPANESE PRIVET	5 GALLON	MEDIUM		** ROS CAL	ROSA CALIFORNICA	CALIFORNIA WILD ROSE	5 GALLON	LOW	
** ARCTOSTAPHYLOS 'HOWARD MCMINN'	MANZANITA	5 GALLON	LOW	LIGUSTRUM J. 'TEXANUM'	GIANT LILY TURF	5 GALLON	MEDIUM							
AZALEA 'SOUTHERN INDICA'	SUN AZALEA	5 GALLON	MEDIUM	LIRIOPE GIGANTEA	CHINESE FRINGE FLOWER	5 GALLON	LOW							
BUDDLEIA DAVIDII	BUTTERFLY BUSH	5 GALLON	LOW	LOROPETALUM CHINENSE	RED FRINGE FLOWER	5 GALLON	LOW							
BUXUS JAPONICA	BOXWOOD	1 GALLON	MEDIUM	LOROPETALUM C. 'RAZZLEBERRY'	DEER GRASS	5 GALLON	LOW							
CAMELLIA SASANQUA	CAMELLIA	5 GALLON	MEDIUM	** MUHLENBERGIA RIGENS	DWARF MYRTLE	5 GALLON	LOW							
CAREX DIPSACEA	AUTUMN SEDGE	1 GALLON	MEDIUM	MYRTUS C. 'COMPACTA'	HEAVENLY BAMBOO	5 GALLON	LOW							
CISTUS HYBRIDUS	ROCKROSE	5 GALLON	LOW	NANDINA DOMESTICA	DWARF HEAVENLY BAMBOO	5 GALLON	LOW							
COLEONEMA 'SUNSET GOLD'	GOLDEN BREATH-OF-HEAVEN	1 GALLON	MEDIUM	NANDINA D. 'COMPACTA'	GULF STREAM BAMBOO	1 GALLON	LOW							
DIETES BICOLOR	FORTNIGHT LILY	1 GALLON	LOW	NANDINA D. 'GULF STREAM'	CATMINT	1 GALLON	LOW							
DIETES IRIDIODES	FORTNIGHT LILY	1 GALLON	LOW	NEPETA FAASSENII	OLEANDER	5 GALLON	LOW							
ESCALLONIA 'FRADESII'	ESCALLONIA	5 GALLON	MEDIUM	NERIUM OLEANDER	DWARF OLIVE	5 GALLON	LOW							
EUONYMUS J. 'MICROPHYLLUS'	BOXLEAF EUONYMUS	5 GALLON	LOW	OLEA E. 'LITTLE OLLIE'	NEW FOUNTAIN GRASS	1 GALLON	LOW							
EURYOPS P. 'MUNCHKIN'	DWARF EURYOPS	1 GALLON	LOW	PENNISETUM 'HAMELN'	DWARF ZEALAND FLAX	5 GALLON	LOW							
FEJOA SELLOWIANA	PINEAPPLE GUAVA	5 GALLON	LOW	PHORMIUM T. 'MAORI MAIDEN'	PITTIOSPORUM 'WHEELER'S DWARF'	1 GALLON	MEDIUM							
FESTUCA GLAUCA	BLUE FESCUE	1 GALLON	LOW	PITTIOSPORUM 'WHEELER'S DWARF'	VARIEGATED TOBIRA	5 GALLON	MEDIUM							
GERANIUM 'JOHNSON'S BLUE'	GERANIUM	1 GALLON	MEDIUM	PITTIOSPORUM T. 'VARIEGATA'	FERN PINE	5 GALLON	MEDIUM							
GREVILLEA 'NOELLI'	WOOLY GREVILLEA	5 GALLON	LOW	PODOCARPUS GRACILIOR	BRIGHT & TIGHT LAUREL	5 GALLON	LOW							
HELICTOTRICHON SEMPERVIRENS	BLUE OAT GRASS	1 GALLON	LOW	PRUNUS 'BRIGHT & TIGHT'	PROSTRATE FIRETHORN	1 GALLON	LOW							
HEMEROCALLIS HYBRIDS	DAYLILY	1 GALLON	MEDIUM	PYRACANTHA 'SANTA CRUZ'	INDIA HAWTHORN	1 GALLON	LOW							
ILEX C. 'BURFORDI'	BURFORD HOLLY	5 GALLON	LOW	RHAPHIOLEPIS L. 'BALLERINA'	INDIA HAWTHORN	5 GALLON	LOW							
ILEX VOMITORIA 'NANA'	DWARF YAUPON HOLLY	1 GALLON	LOW	RHAPHIOLEPIS L. 'WHITE ENCHANTRESS'	CECILE BRUNNER ROSE	5 GALLON	LOW							
				ROSA 'CECILE BRUNNER'	ROSEMARY	5 GALLON	LOW							
				ROSMARINUS OFFICINALIS	WHITE SHRUB ROSE	5 GALLON	MEDIUM							
				ROSA 'MEIDELAND WHITE'	GROUNDCOVER ROSE	1 GALLON	MEDIUM							
				ROSA 'FLOWER CARPET PINK'	BLUEBELL CREEPER	1 GALLON	LOW							
				SOLLYIA HETEROPHYLLA	BIRD-OF-PARADISE	5 GALLON	MEDIUM							
				STRELITZIA REGINAE	COMMON LILAC	5 GALLON	LOW							
				SYRINGA VULGARIS	STAR JASMINE	1 GALLON	MEDIUM							
				TRACHELOSPERMUM JASMINOIDES	LAURUSTINUS	5 GALLON	MEDIUM							
				VIBURNUM TINUS	COMPACT XYLOSMA	5 GALLON	LOW							
				XYLOSMA C. 'COMPACTA'										



GRAPHIC SCALE



(IN FEET)
1 inch = 10 ft.



**LANDSCAPE ARCHITECTURE
LAND PLANNING**
1615 BONANZA STREET
SUITE 314
WALNUT CREEK, CA 94596
TEL: 925.938.7377
FAX: 925.938.7436



RYDER HOMES



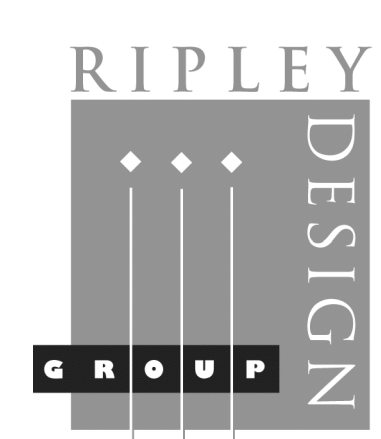
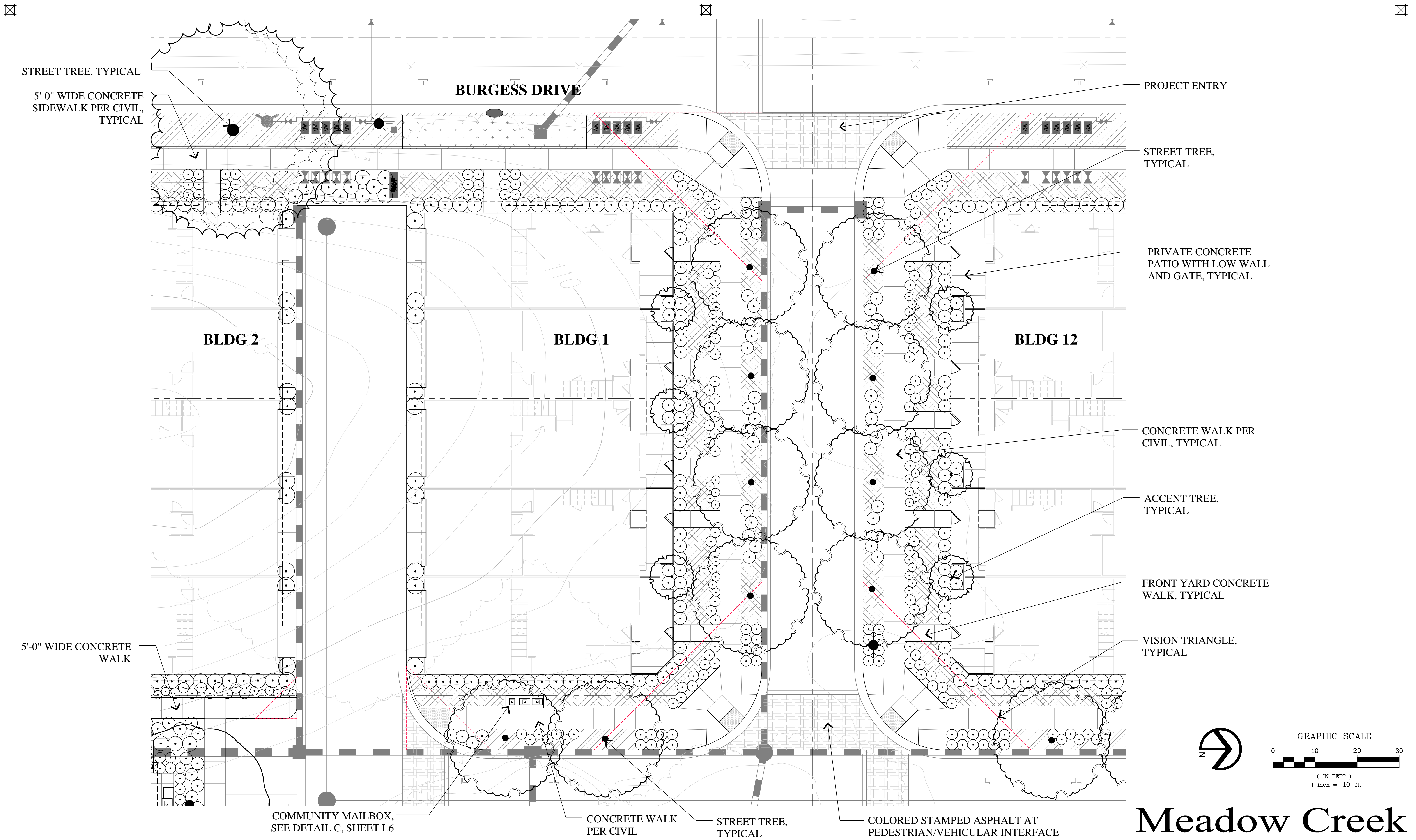
Preliminary Landscape Enlargement Internal Frontage

Meadow Creek Townhomes

Santa Rosa, California

April 14, 2025

L4



LANDSCAPE ARCHITECTURE
LAND PLANNING
1615 BONANZA STREET
SUITE 314
WALNUT CREEK, CA 94596
TEL: 925.938.7377
FAX: 925.9387436

RYDER HOMES

Preliminary Landscape Enlargement Burgess Drive Frontage

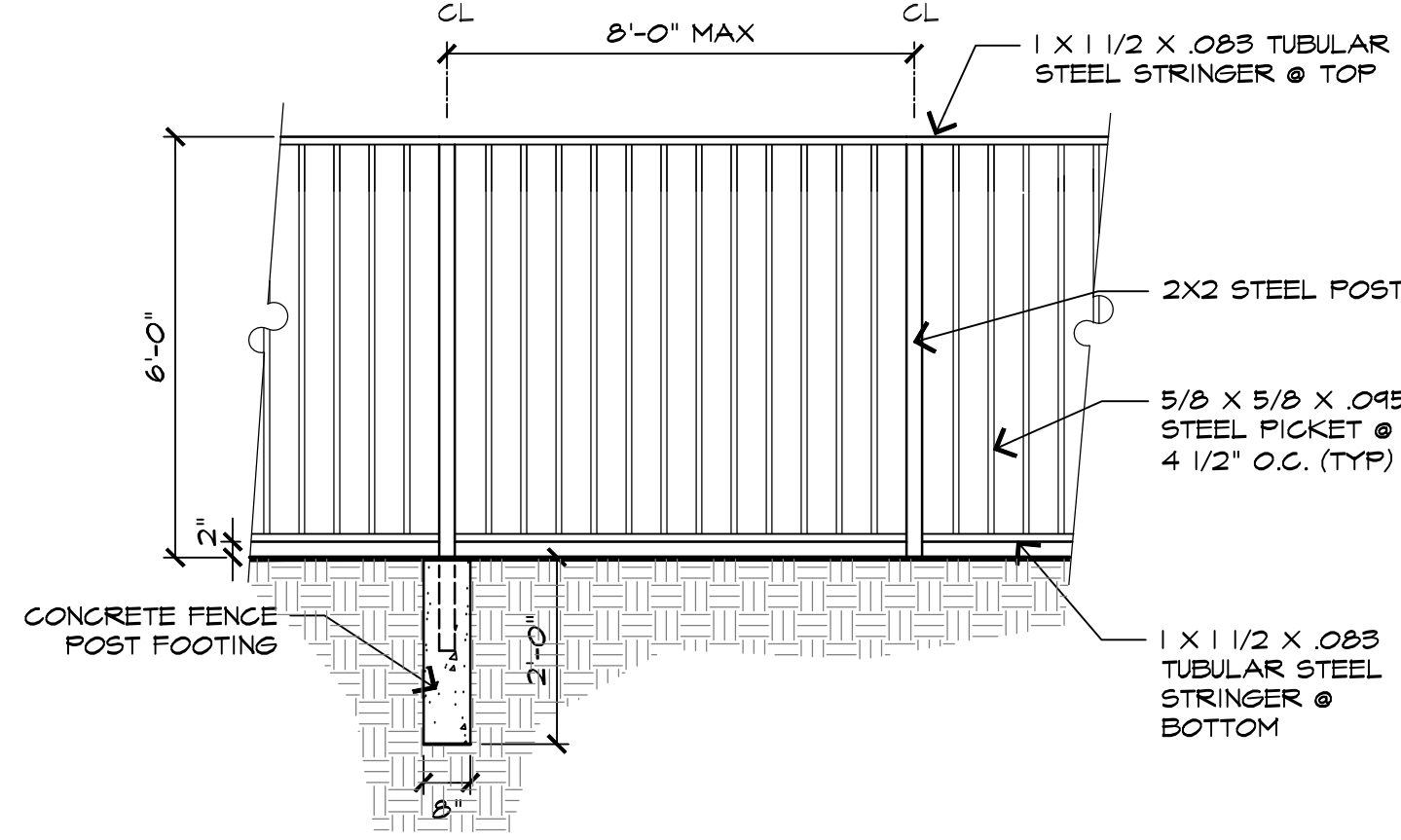
Meadow Creek
Townhomes
Santa Rosa, California

April 14, 2025

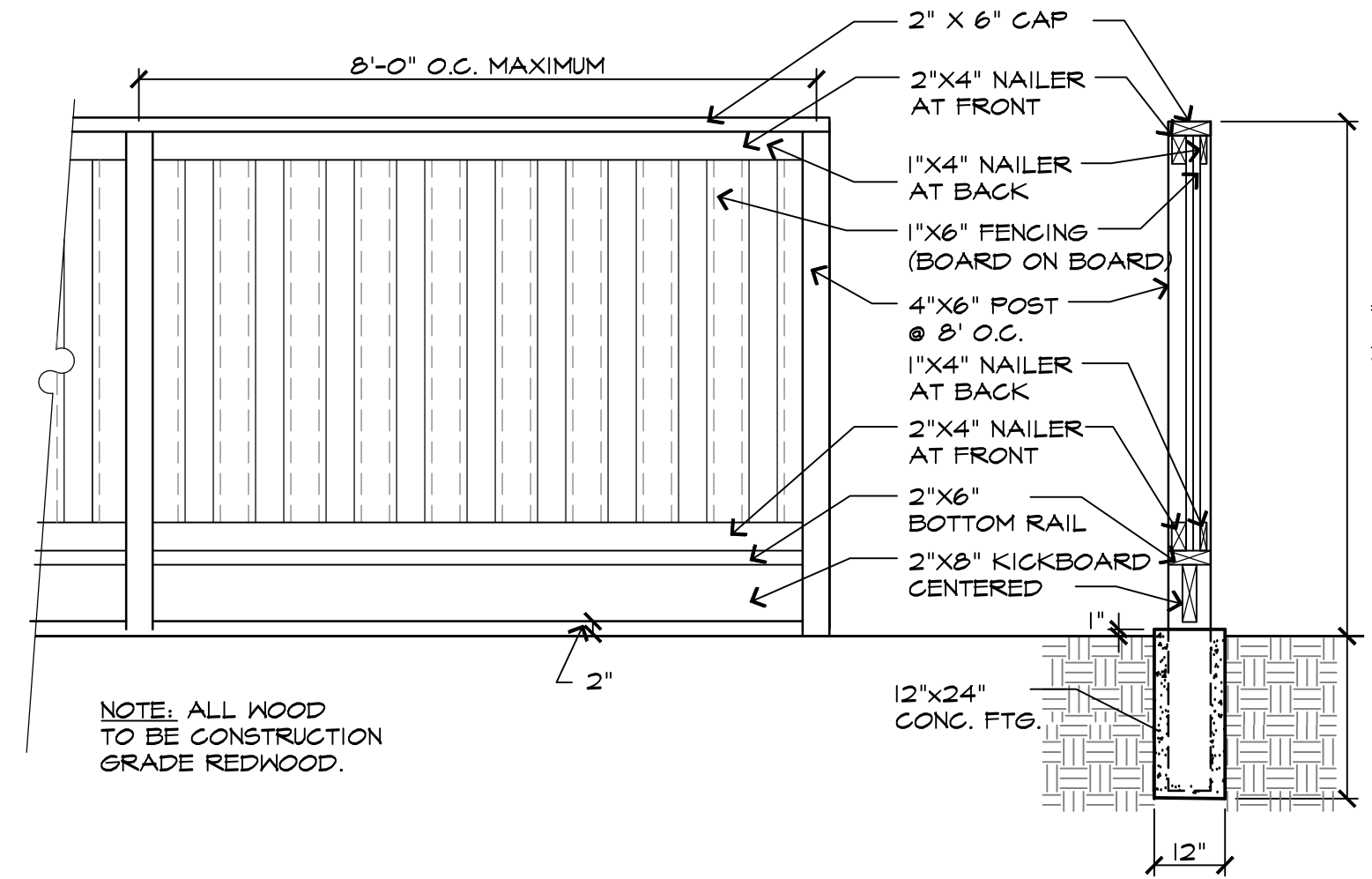
L5



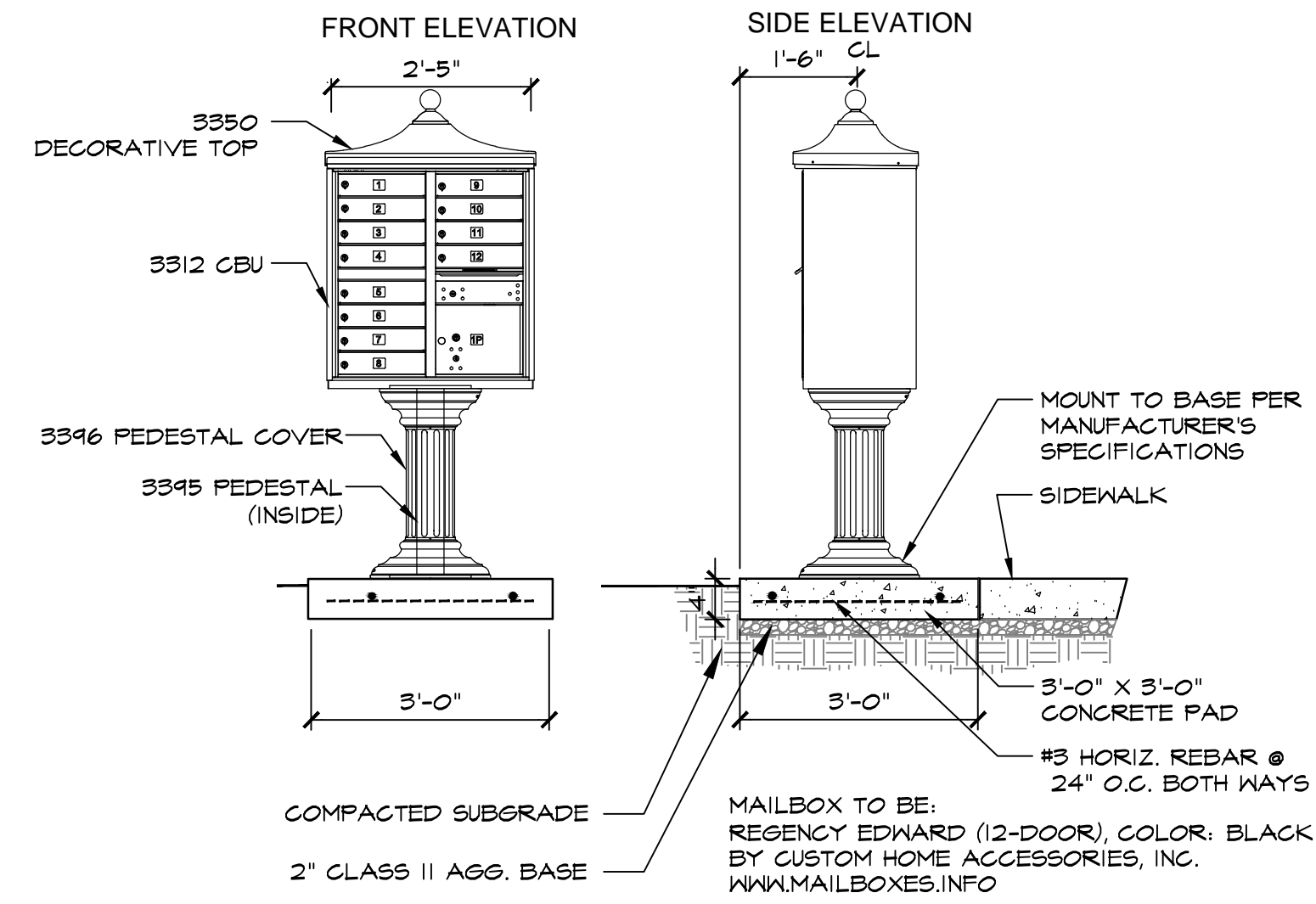
NOTES:
ALL CONNECTIONS TO BE WELDED. FILLET WELD/SMOOTH GRIND ALL JOINTS. ALL METAL TO BE .160" THICK.
FINISH: POWDERCOATED BLACK. FIELD TOUCH UP WITH PAINT.



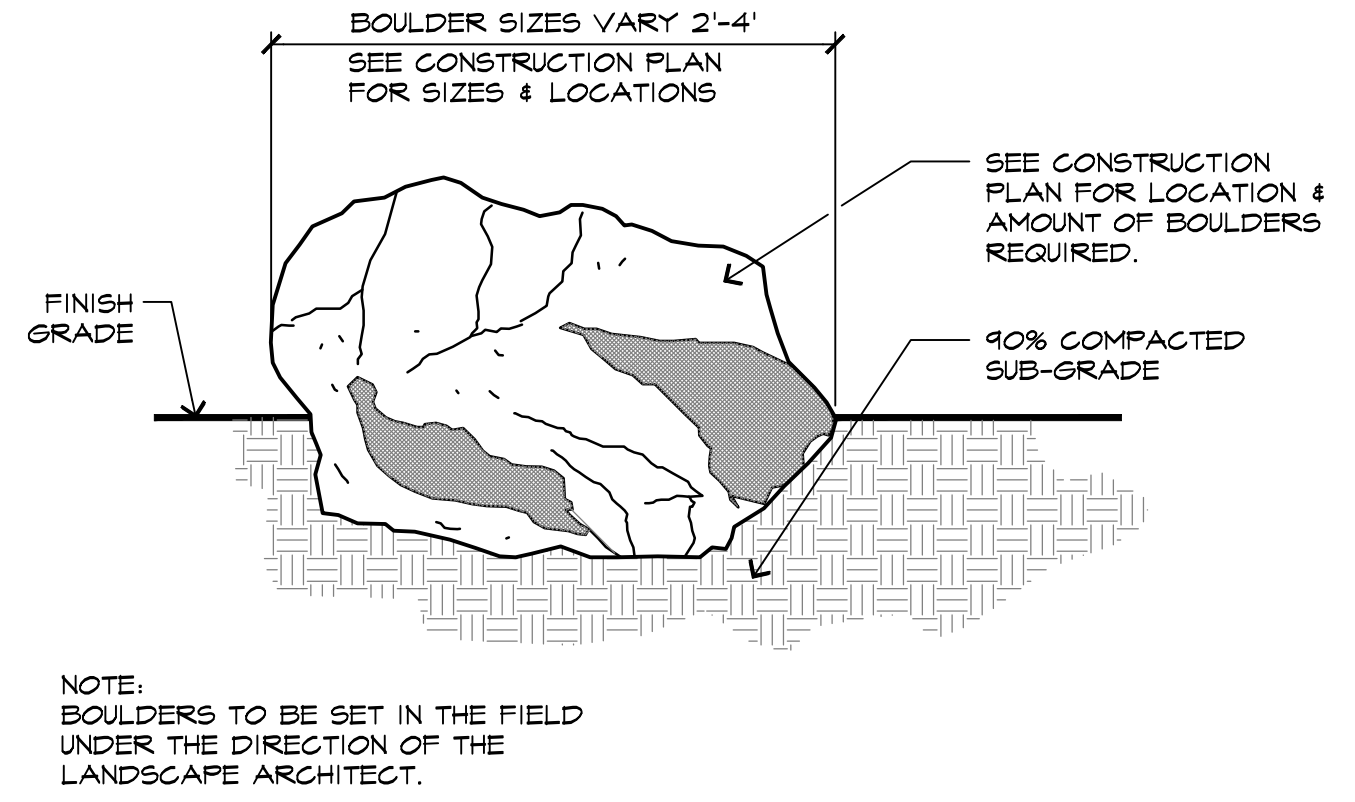
A TUBULAR STEEL FENCE SCALE: 1/2" = 1'-0"
024 - Fnc/Trp



B WOOD FENCE W/KICKERBOARD SCALE: 1/2" = 1'-0"
024 - Fnc/Trp



C COMMUNITY MAILBOXES N.T.S.



D BOULDER INSET FINISHED GRADE N.T.S.
006 - Bldg



E WOOD OVERHEAD SHADE STRUCTURE N.T.S.
024



NOTE:
1. PICNIC TABLE TO BE APEX ENSEMBLE BY FORMS AND SURFACES OR EQUAL.
2. COLOR TO BE POWDER COATED INK BLUE TEXTURE OR EQUAL.

F PICNIC TABLE N.T.S.
024



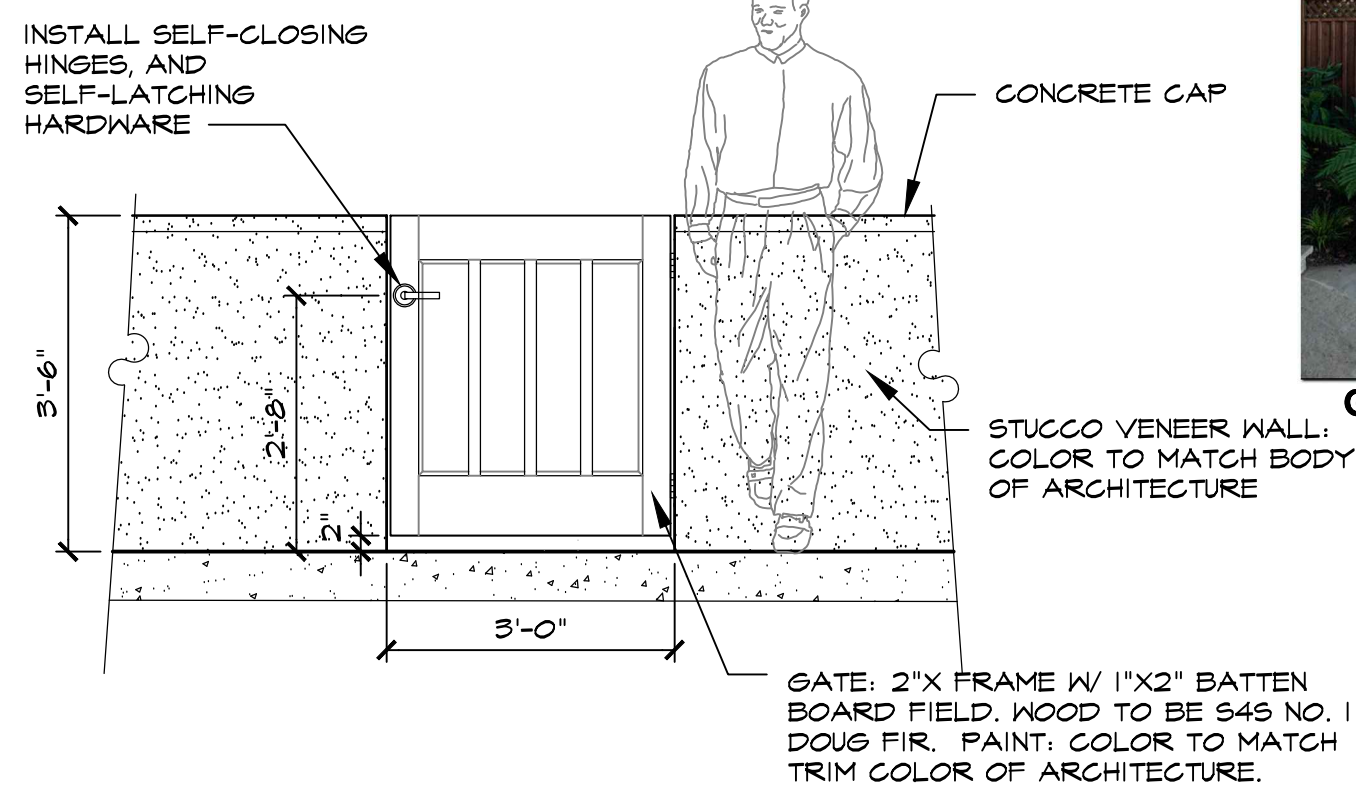
NOTE:
1. FIRE TABLE TO BE MANOS 'BEAM' OR EQUAL, SIZE: LARGE, 80" L x 36" W x 15" H.
2. COLOR TO BE 'HURRICANE' OR EQUAL.

G FIRE TABLE N.T.S.
024

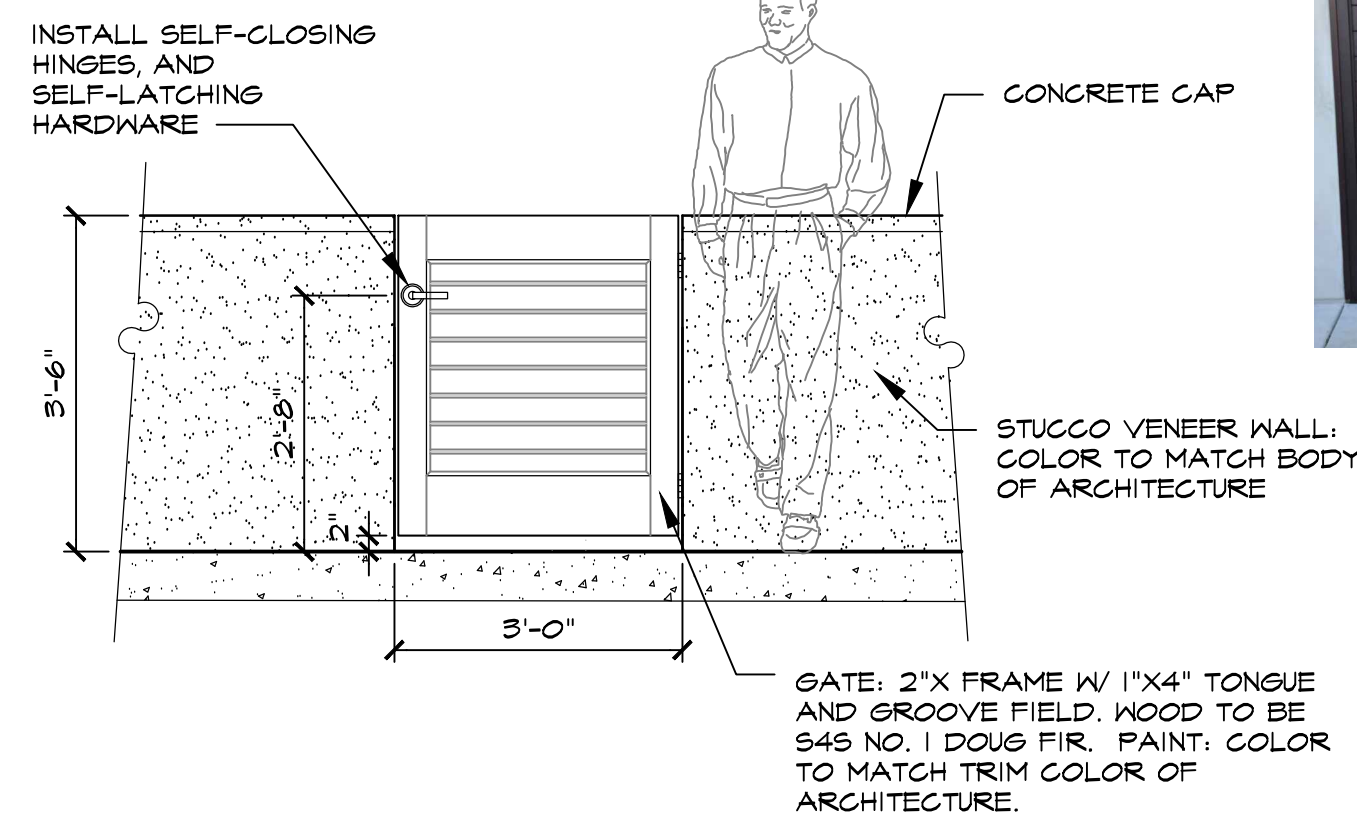


NOTE:
1. STAMPED ASPHALT TO BE STREETPRINT GENUINE STAMPED ASPHALT
COLOR TO BE: BURNT SIENNA, PATTERN: OFFSET BRICK.
AVAILABLE AT WWW.SQUAREONEPAVING.COM TEL: 604-466-9902
2. INSTALL PER MANUFACTURER'S INSTRUCTIONS.

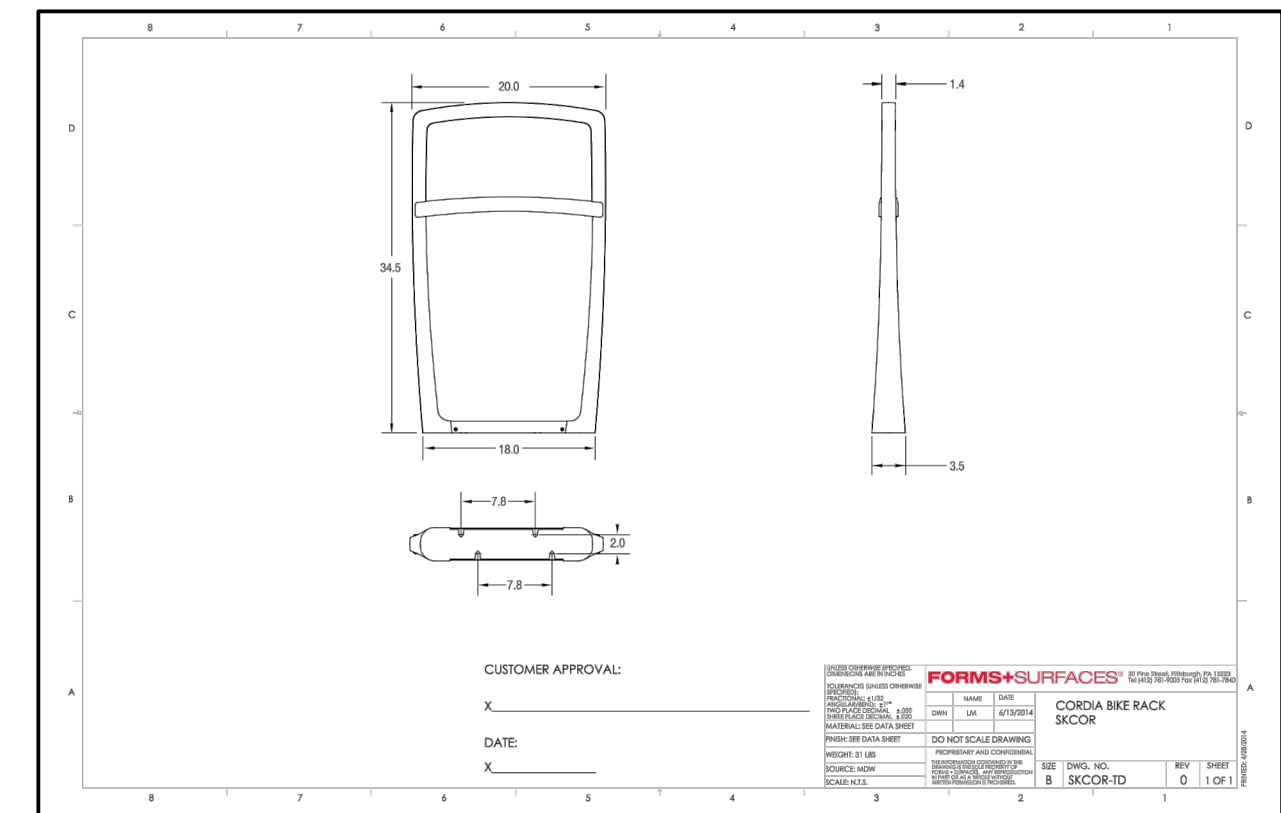
H COLORED STAMPED ASPHALT N.T.S.



I COURTYARD WALL W/ GATE (VARIATION A) SCALE: 1/2" = 1'-0"
024 -

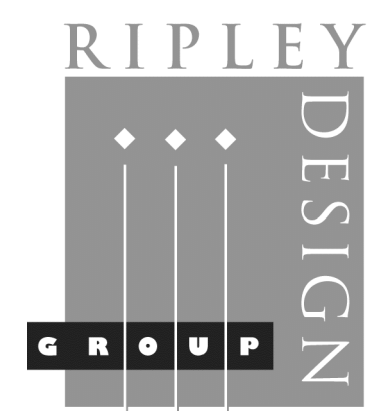


J COURTYARD WALL W/ GATE (VARIATION B) SCALE: 1/2" = 1'-0"
024 -



NOTES:
1. CORDIA BIKE RACK
2. POWDERCOAT COLOR TO BE 'SILVER'
3. AVAILABLE FROM FORMS+SURFACE
WWW.FORMS-SURFACES.COM
4. INSTALL PER MANUFACTURER'S INSTRUCTIONS

K BICYCLE RACK N.T.S.



LANDSCAPE ARCHITECTURE
LAND PLANNING
1615 BONANZA STREET
SUITE 314
WALNUT CREEK, CA 94596
TEL: 925.938.7377
FAX: 925.938.7436



RYDER HOMES

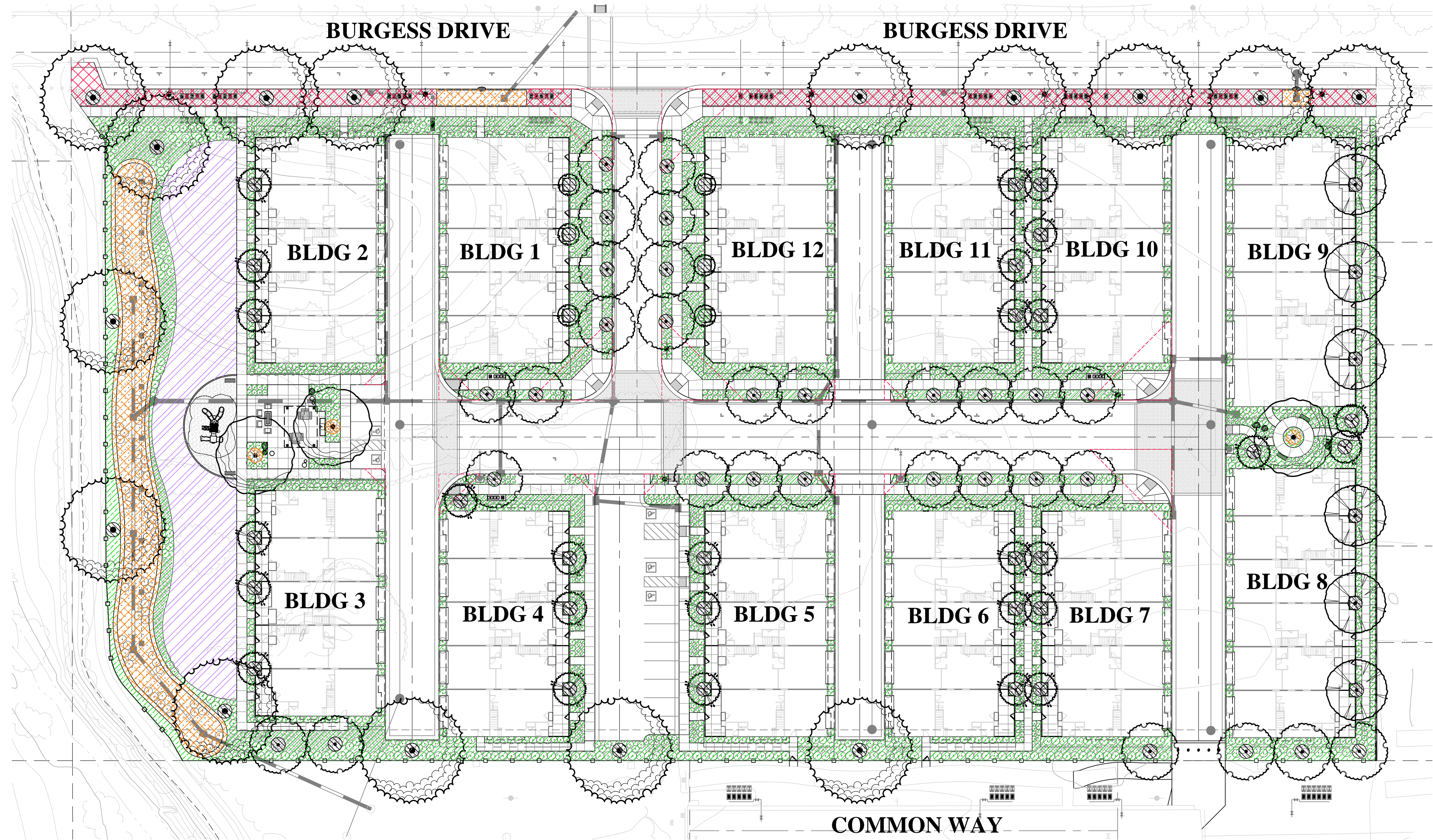


Preliminary Landscape Details

Meadow Creek
Townhomes
Santa Rosa, California

April 14, 2025

L6



WATER USE CALCULATIONS TYPICALS:

THE MAXIMUM APPLIED WATER ALLOWANCE (MAWA) IN GALLONS PER YEAR IS BASED ON THE FOLLOWING FORMULA:

$$MAWA = (ET_o)(0.62)(0.55 \times LA)$$

THE ESTIMATED TOTAL WATER USE (ETWU) IS THE SUM TOTAL OF ESTIMATED WATER USE FOR EACH HYDROZONE IN GALLONS PER YEAR AND IS BASED ON THE FOLLOWING FORMULA:

$$ETWU = (ET_o)(0.62)((PF \times HA) + SLA) / IE$$

ET_o = REFERENCE EVAPOTRANSPIRATION (INCHES PER YEAR)
LA = LANDSCAPE AREA
HA = HYDROZONE AREA (SQUARE FEET)
PF = PLANT FACTOR FROM WUCOLS
IE = IRRIGATION EFFICIENCY (0.8)
0.55 = ET ADJUSTMENT FACTOR
0.62 = CONVERSION FACTOR (TO GALLONS)

REFERENCE EVAPOTRANSPIRATION (ET_o) : 42.0

MAXIMUM APPLIED WATER ALLOWANCE: 725,194 GAL/YR

MAWA = (42.0) X (0.62) X (0.55 X 50,635) = 725,194 GAL/YR

ESTIMATED TOTAL WATER USE: 482,223 GAL/YR

LOW ETWU = (42.0) X (0.62) X $(\frac{0.20 \times 36,155}{0.8})$ = 232,463 GAL/YR

MED ETWU = (42.0) X (0.62) X $(\frac{0.40 \times 6,508}{0.8})$ = 83,688 GAL/YR

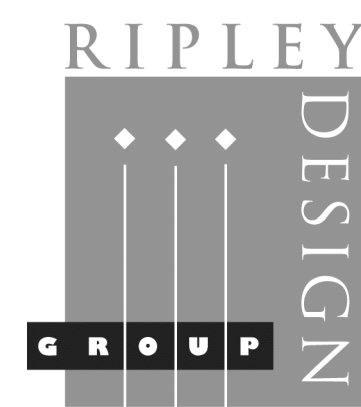
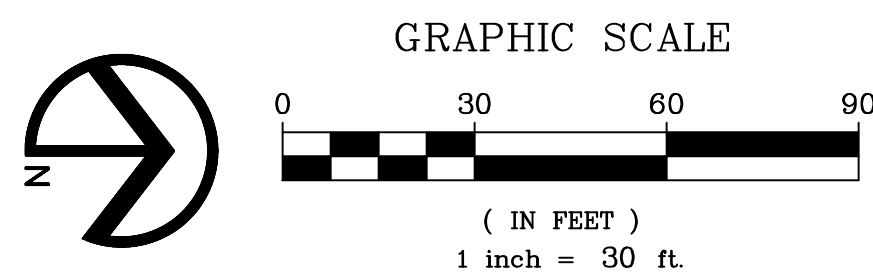
HIGH ETWU = (42.0) X (0.62) X $(\frac{0.60 \times 7,972}{0.75})$ = 166,072 GAL/YR

HYDROZONES

SYMBOLS	NAME TYPE	WATER USE	SQUARE FOOTAGE
	A-1 BUBBLER ONSITE TREES	LOW	595 SQ FT
	A-2 DRIP SPECIMEN TREES	MEDIUM	21 SQ FT
	A-3 DRIP SHRUBS-ONSITE PLANTING	LOW	31,335 SQ FT
	A-4 DRIP SHRUBS-PARKWAY PLANTING	LOW	4,225 SQ FT
	A-5 DRIP SHRUBS-BIO RETENTION PLANTING	MEDIUM	6,487 SQ FT
	A-6 SPRAY TURF-COMMUNAL TURF AREAS	HIGH	7,972 SQ FT

NOTES

- ALL TREES SHALL BE PLANTED AND STAKED PER CITY STANDARDS.
- TREES BE PLANTED WITHIN 3' OF HARDSCAPE ELEMENTS, SHALL HAVE A LINEAR ROOT BARRIER INSTALLED ADJACENT TO THE HARDSCAPE ELEMENT AT TIME OF TREE PLANTING.
- LANDSCAPE AND IRRIGATION SHALL COMPLY WITH CITY'S CURRENT WATER-EFFICIENT LANDSCAPE ORDINANCE.
- ALL PLANTING AREAS SHALL BE AUTOMATICALLY IRRIGATED PER CITY OF SANTA ROSA STANDARDS. USING LOW-FLOW SPRAY, BUBBLERS OR DRIP METHODS.
- ALL PLANTING AREAS SHALL BE MULCHED TO A MINIMUM DEPTH OF 3".



LANDSCAPE ARCHITECTURE
LAND PLANNING
1615 BONANZA STREET
SUITE 314
WALNUT CREEK, CA 94596
TEL: 925.938.7377
FAX: 925.938.7436



RYDER HOMES

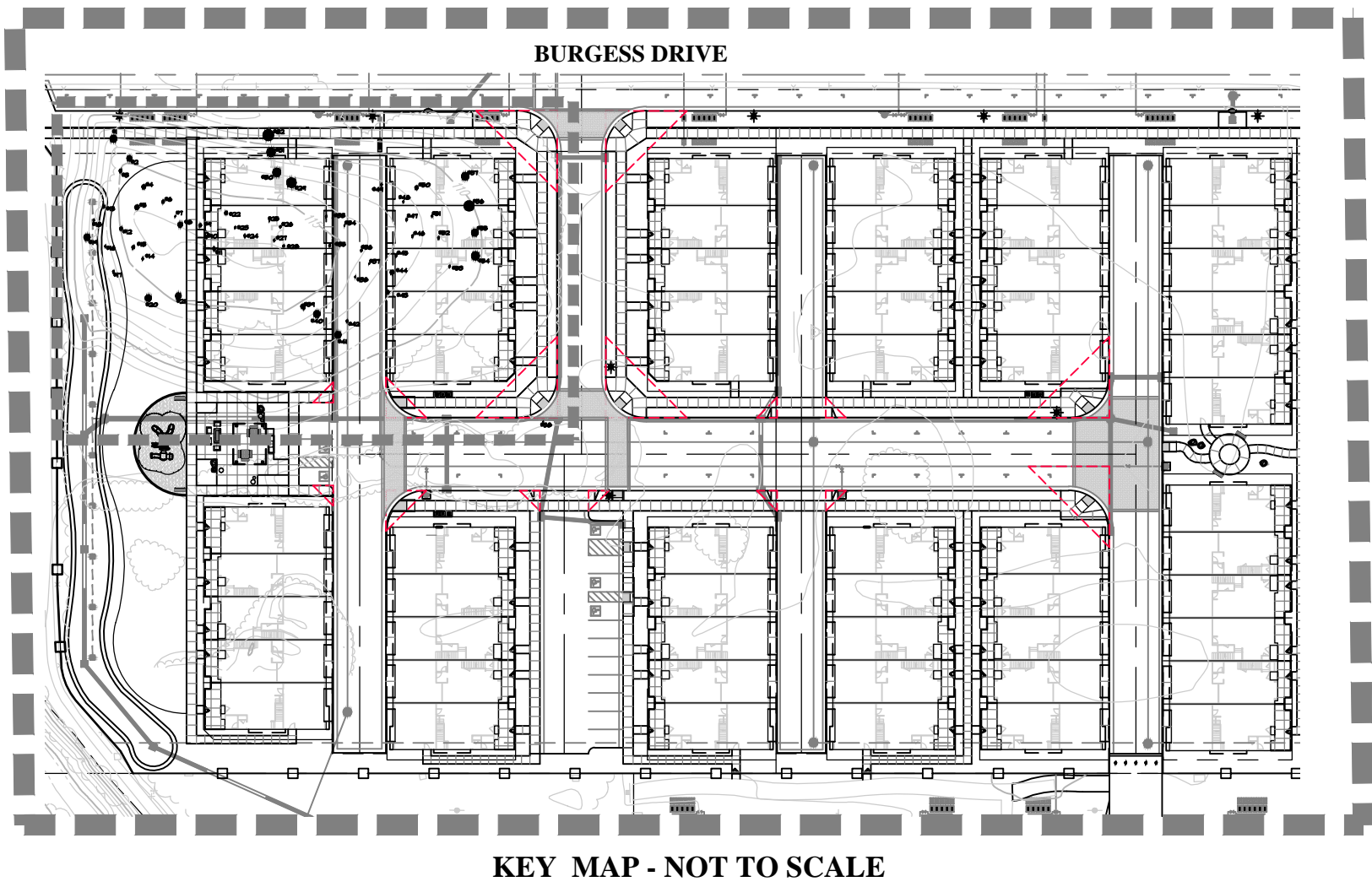
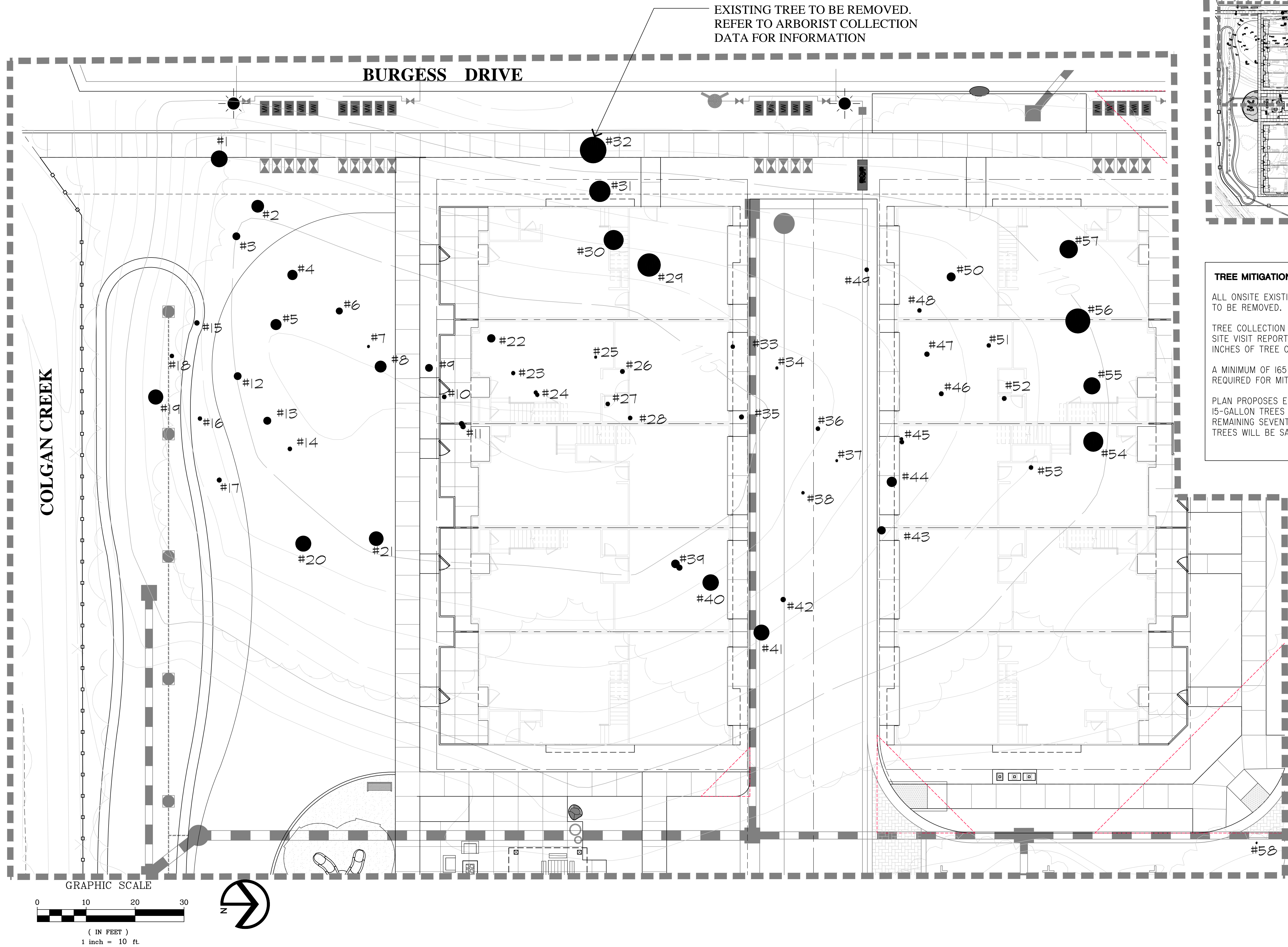


Preliminary Landscape Hydrozone Plan

Meadow Creek
Townhomes
Santa Rosa, California

April 14, 2025

L7



TREE MITIGATION:

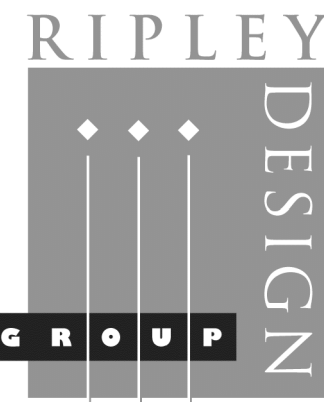
ALL ONSITE EXISTING TREES ARE PROPOSED TO BE REMOVED.

TREE COLLECTION DATA FROM ARBORIST SITE VISIT REPORTS A TOTAL OF 985 INCHES OF TREE CALIPER BEING REMOVED.

A MINIMUM OF 165 I5-GALLON TREES ARE REQUIRED FOR MITIGATION.

PLAN PROPOSES EIGHTY-EIGHT (88) I5-GALLON TREES TO BE INSTALLED. THE REMAINING SEVENTY-SEVEN (77) MITIGATION TREES WILL BE SATISFIED BY IN-LIEU FEES.

Tree Collection Data: Meadow Creek - APN 134-042-070 - Santa Rosa, CA				
Collection Date: April 4, 2025				
Tree #	Botanical Name	Common Name	DBH	Notes
1	Eucalyptus globulus	Blue Gum	4.1"	
2	Eucalyptus globulus	Blue Gum	3.8"	
3	Eucalyptus globulus	Blue Gum	3.6"	
4	Eucalyptus globulus	Blue Gum	20"	
5	Eucalyptus globulus	Blue Gum	2.7"	
6	Eucalyptus globulus	Blue Gum	3.8"	
7	Eucalyptus globulus	Blue Gum	5"	
8	Eucalyptus globulus	Blue Gum	7"	
9	Eucalyptus globulus	Blue Gum	3.8"	
10	Eucalyptus globulus	Blue Gum	3.0"	
11	Eucalyptus globulus	Blue Gum	13.5"	10" x 9" Co-dom @ 48"
12	Eucalyptus globulus	Blue Gum	3.8"	
13	Eucalyptus globulus	Blue Gum	3.8"	
14	Eucalyptus globulus	Blue Gum	10"	
15	Eucalyptus globulus	Blue Gum	16"	
16	Eucalyptus globulus	Blue Gum	9"	
17	Eucalyptus globulus	Blue Gum	12"	
18	Eucalyptus globulus	Blue Gum	14"	
19	Eucalyptus globulus	Blue Gum	16"	
20	Eucalyptus globulus	Blue Gum	38"	
21	Eucalyptus globulus	Blue Gum	34"	
22	Eucalyptus globulus	Blue Gum	19"	
23	Eucalyptus globulus	Blue Gum	9"	
24	Eucalyptus globulus	Blue Gum	12"	6" x 9" Co-dom @ 48"
25	Eucalyptus globulus	Blue Gum	6"	
26	Eucalyptus globulus	Blue Gum	10"	
27	Eucalyptus globulus	Blue Gum	11"	
28	Eucalyptus globulus	Blue Gum	10"	
Tree #	Botanical Name	Common Name	DBH	Notes
29	Eucalyptus globulus	Blue Gum	6.5"	
30	Eucalyptus globulus	Blue Gum	10"	50" DBH, DEAD
31	Eucalyptus globulus	Blue Gum	6.2"	
32	Eucalyptus globulus	Blue Gum	6.7"	
33	Eucalyptus globulus	Blue Gum	9"	
34	Eucalyptus globulus	Blue Gum	6"	
35	Eucalyptus globulus	Blue Gum	11"	
36	Eucalyptus globulus	Blue Gum	10"	
37	Eucalyptus globulus	Blue Gum	5"	
38	Eucalyptus globulus	Blue Gum	8"	
39	Eucalyptus globulus	Blue Gum	2.8"	20" x 12"
40	Eucalyptus globulus	Blue Gum	3.9"	
41	Eucalyptus globulus	Blue Gum	3.7"	
42	Eucalyptus globulus	Blue Gum	12"	
43	Eucalyptus globulus	Blue Gum	2.1"	
44	Eucalyptus globulus	Blue Gum	2.4"	
45	Eucalyptus globulus	Blue Gum	13.5"	8" x 10"
46	Eucalyptus globulus	Blue Gum	9"	
47	Eucalyptus globulus	Blue Gum	12"	
48	Eucalyptus globulus	Blue Gum	10"	
49	Eucalyptus globulus	Blue Gum	1.4"	
50	Eucalyptus globulus	Blue Gum	2.2"	
51	Eucalyptus globulus	Blue Gum	9"	
52	Eucalyptus globulus	Blue Gum	1.1"	
53	Eucalyptus globulus	Blue Gum	10"	
54	Eucalyptus globulus	Blue Gum	4.9"	
55	Eucalyptus globulus	Blue Gum	4.2"	
56	Eucalyptus globulus	Blue Gum	6.4"	
57	Eucalyptus globulus	Blue Gum	4.5"	
58	Quercus garryana	Oregon White Oak	4"	
Total Inches:			985	



LANDSCAPE ARCHITECTURE
LAND PLANNING
1615 BONANZA STREET
SUITE 314
WALNUT CREEK, CA 94596
TEL: 925.938.7377
FAX: 925.9387436

RYDER HOMES

Tree Mitigation Plan

Meadow Creek
Townhomes
Santa Rosa, California

April 14, 2025