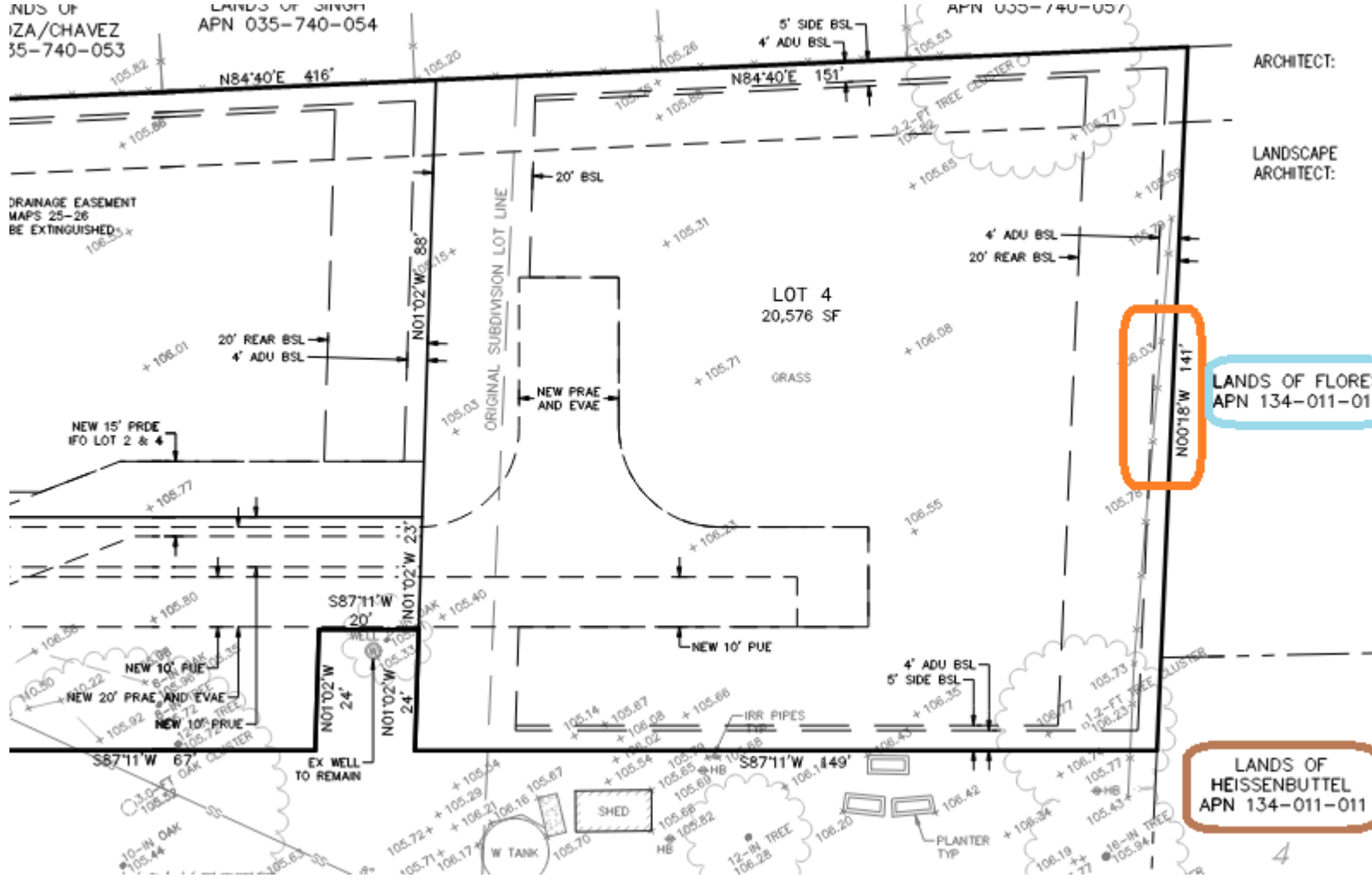


This is a graphic from the final map that created the parcels in question. Lots 1 through 3 will become the tentative parcel map. Lot 4 will become the parcels subject to a Corner Record.

LANDS OF
IZA/CHAVEZ
APN 035-740-053

LANDS OF SHOFF
APN 035-740-054

APN 035-740-057



LANDS OF FLORES
APN 134-011-010

LANDS OF HEISSEN BUTTEL
APN 134-011-011

ARCHITECT:

LANDSCAPE ARCHITECT:

PH: 707-583-2
FAX: 707-583-

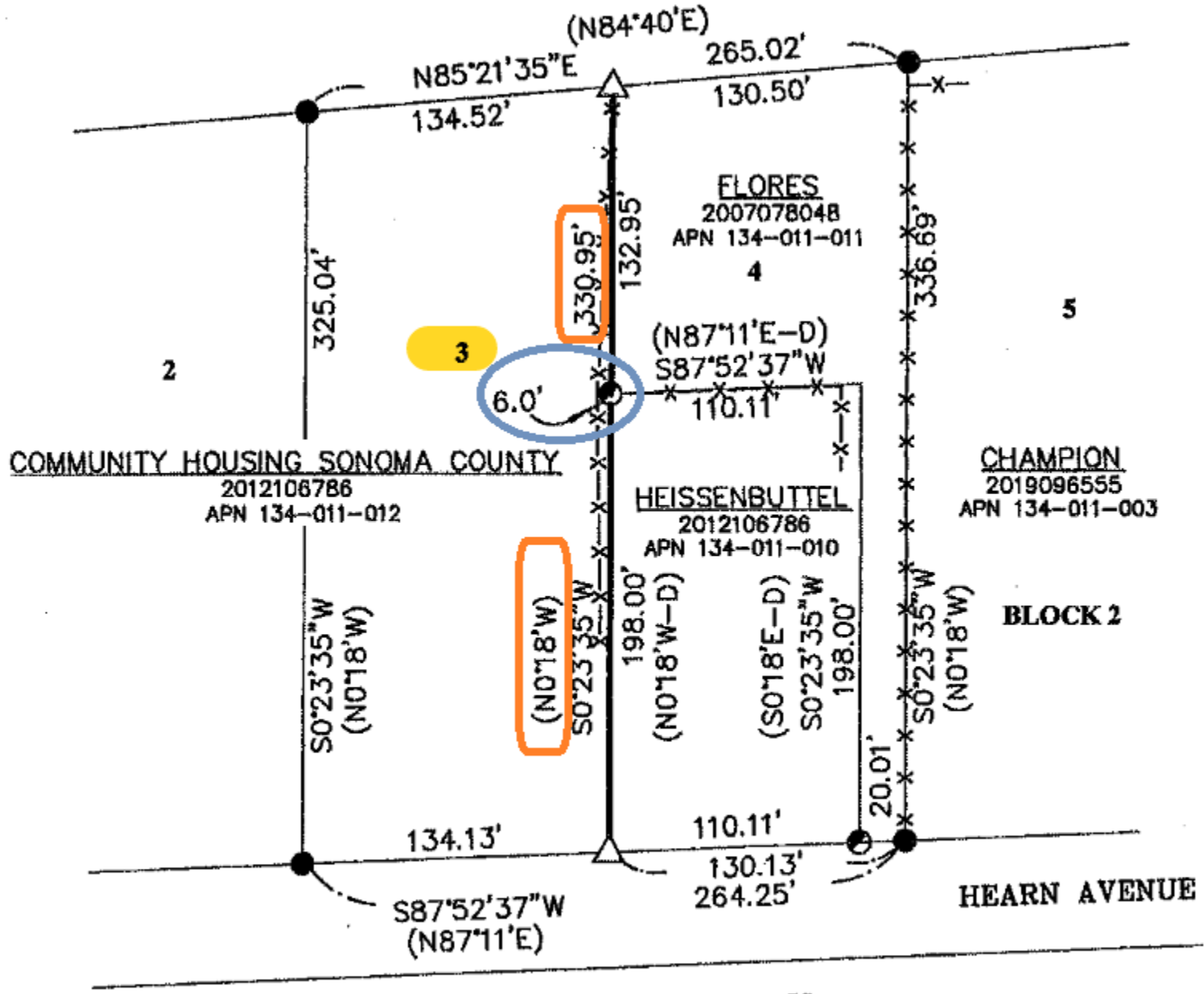
FRITZ ARCHITECT
P.O. BOX 1074
SEBASTOPOL CA
PH: 707-975-6

QUADRIGA
1212 4TH STREET
SANTA ROSA, CA
PH: 707-546-;

GENERAL NOTES

- THE PROPOSED CODE, GENERAL TENTATIVE MAP
- WATER SUPPLY
- SEWAGE DISPOS
- PRESENT ZONING
- PROPOSED ZONING
- THIS SUBDIVISION
- GRADING NOTES**
- SOILS ON THIS
- NO SOILS REPORT
- 'WRIGHT LOAM' INFILTRATION
- THE ENGINEER
- FEMA FLOOD MAP
- STREET TREES ACCORDANCE WITH
- PROVISIONS FOR
- UTILITY NOTES**
- EXISTING SEWER IMPROVEMENTS
- ROSA DESIGN ARCHITECT

This is a graphic from the tentative parcel map. To the east of line with the length and direction circled in orange are the parcels subject to the Corner Record. The direction of the line has not changed from final map that created the parcels in question.



This is a graphic from the Corner Record. In orange are the distance and direction from the original map verifying that there has been no change to the line separating land for the tentative parcel map and the land that became the 2 parcels subject to the Corner Record.