



Santa Rosa Hearn Community Hub

Agenda

- Fire Station Design
- Library Design
- Landscape Design
- Civil Design
- Q&A

Fire Station Visualization

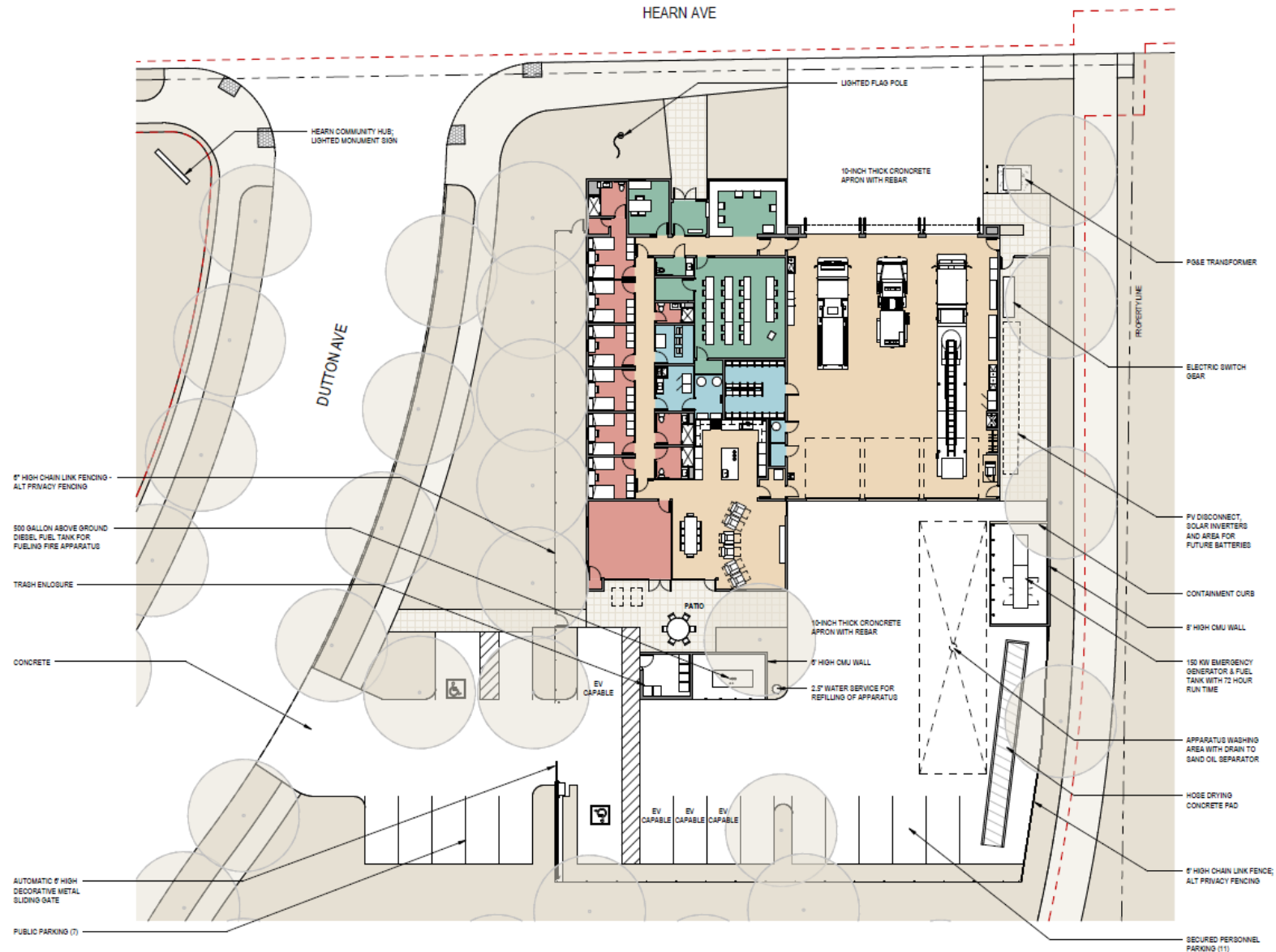


SWINERTON

S H A H
KAWASAKI
ARCHITECTS

JAYSON
ARCHITECTURE

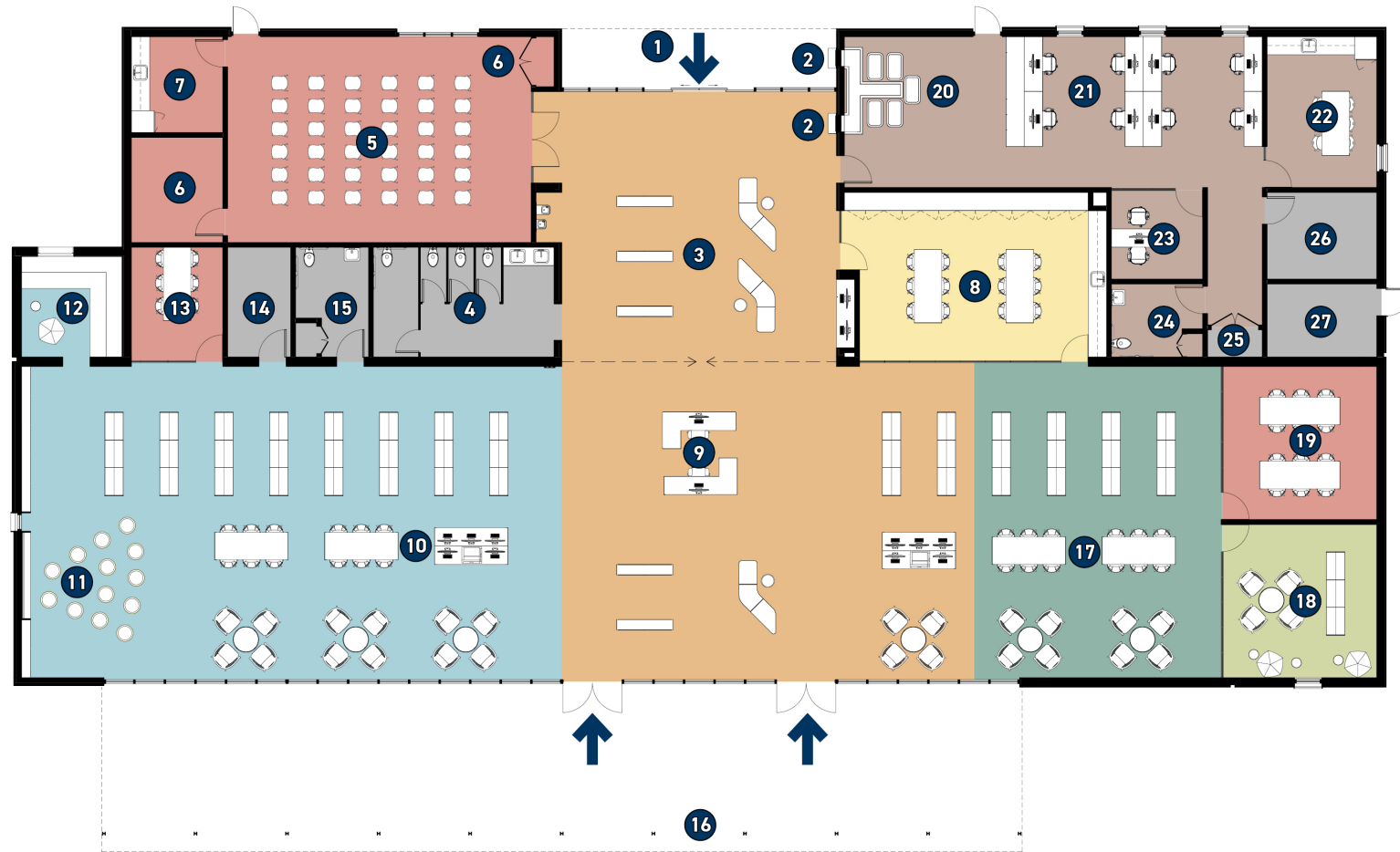
Fire Station Site Plan



Library Visualizations

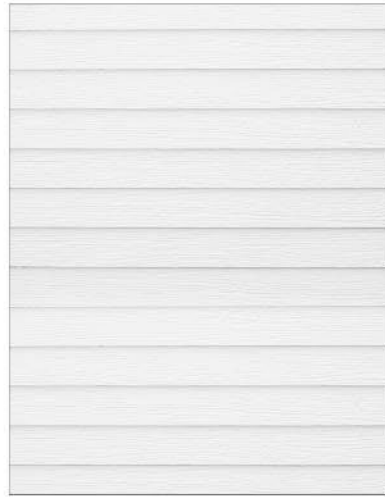
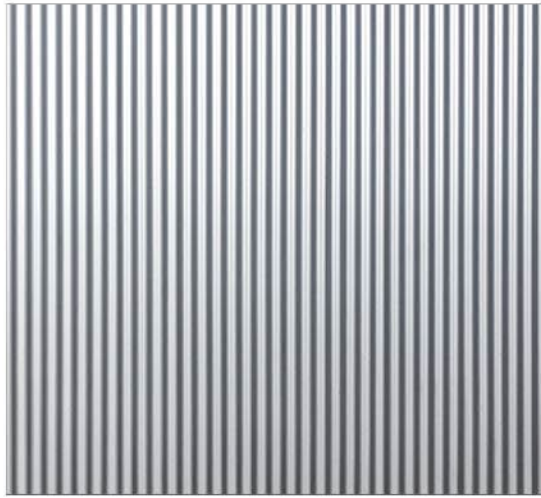


Library Program



- | | | | | | | | | |
|-----------------------|-------------------------------------|----------------------------------|---------------------|---------------------------|------------------|-----------------------------|-------------------|----------------------------|
| 1 MAIN ENTRY | 4 ALL GENDER SINGLE STALL RESTROOMS | 7 KITCHENETTE | 10 CHILDREN AREA | 13 SMALL GROUP STUDY ROOM | 16 COVERED PATIO | 19 LARGE GROUP STUDY ROOM | 22 BREAK AREA | 25 JANITOR'S CLOSET |
| 2 BOOK RETURN | 5 MULTI-PURPOSE ROOM | 8 MAKER/CREATION LAB AND STORAGE | 11 STORY TIME AREA | 14 CHILDREN STORAGE | 17 ADULT AREA | 20 BOOK DROP / SORTING AREA | 23 BRANCH MANAGER | 26 TELECOM ROOM |
| 3 ENTRY / MARKETPLACE | 6 MULTI-PURPOSE ROOM STORAGE / AV | 9 INFO DESK | 12 IMAGINATION ROOM | 15 FAMILY RESTROOM | 18 TEEN AREA | 21 STAFF WORKSTATIONS | 24 STAFF RESTROOM | 27 MECHANICAL / ELECTRICAL |

Exterior Material Palette



SWINERTON

S H A H
KAWASAKI
ARCHITECTS

JAYSON
ARCHITECTURE

Landscape

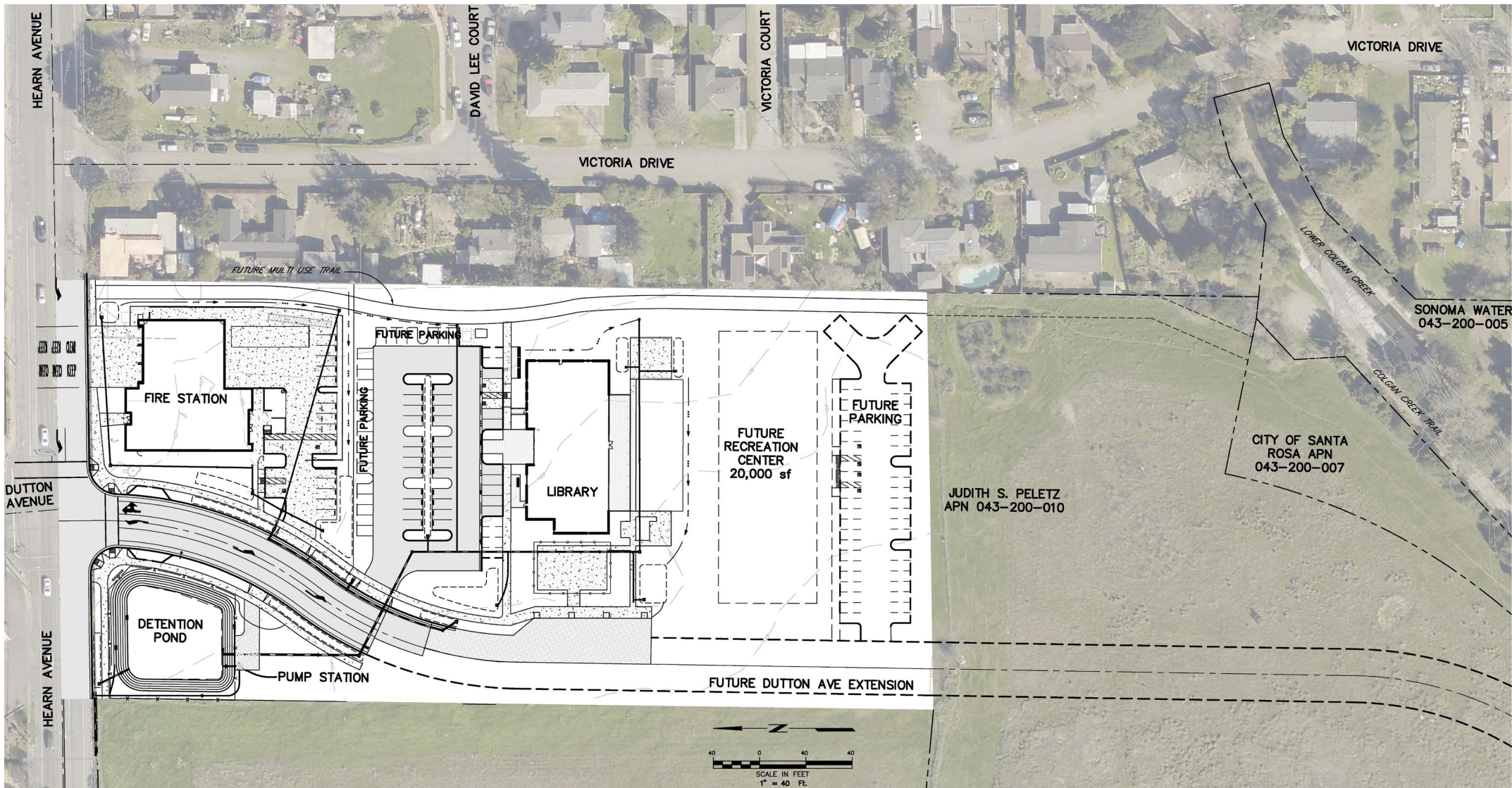


LEGEND	
SYMBOL	DESCRIPTION
①	FIRE STATION
②	PARKING FIRE STATION
③	LIBRARY
④	PARKING LIBRARY
⑤	FUTURE REC CENTER
⑥	PARKING FUTURE REC CENTER
⑦	DEMONSTRATION GARDEN
⑧	CHILDREN'S GARDEN & GIANT LODGE
⑨	LAWN AREA
⑩	TRELLIS & SOCIAL WOOD STAIR
⑪	READING GARDEN
⑫	FOOD TRUCK & FARMERS MARKET AREA
⑬	HYDROZED MEADOW
⑭	FIRE TRUCK TURNAROUND

Landscape



Civil Site Plan



Site plan changes to allow more budget to be used on buildings improvements.

- Reduction in library parking.
- Construct future recreation center parking lot in a future phase.
- Minimize offsite storm drain improvements
- Utilize above ground detention rather than sub-surface.

This item is exempt from the California Environmental Quality Act (CEQA) as no action is being taking (CEQA Guidelines Sections 15061(b)(3) and 15378)



Thank you!



SWINERTON

S H A H
KAWASAKI
ARCHITECTS

JAYSON
ARCHITECTURE