



Regional Operations Update

Subregional TAC
September 19, 2023







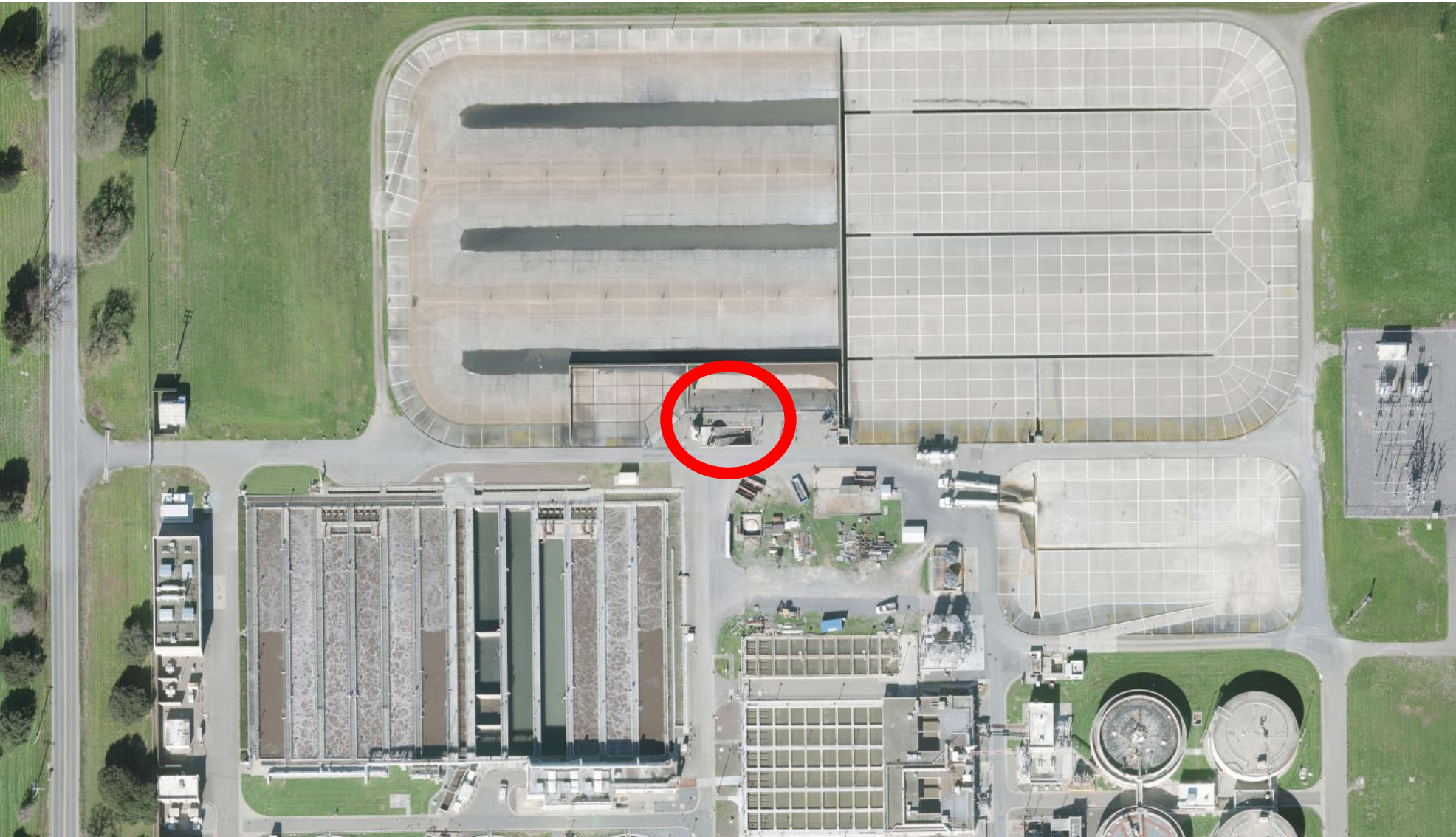
Twin Vista Levee Repair

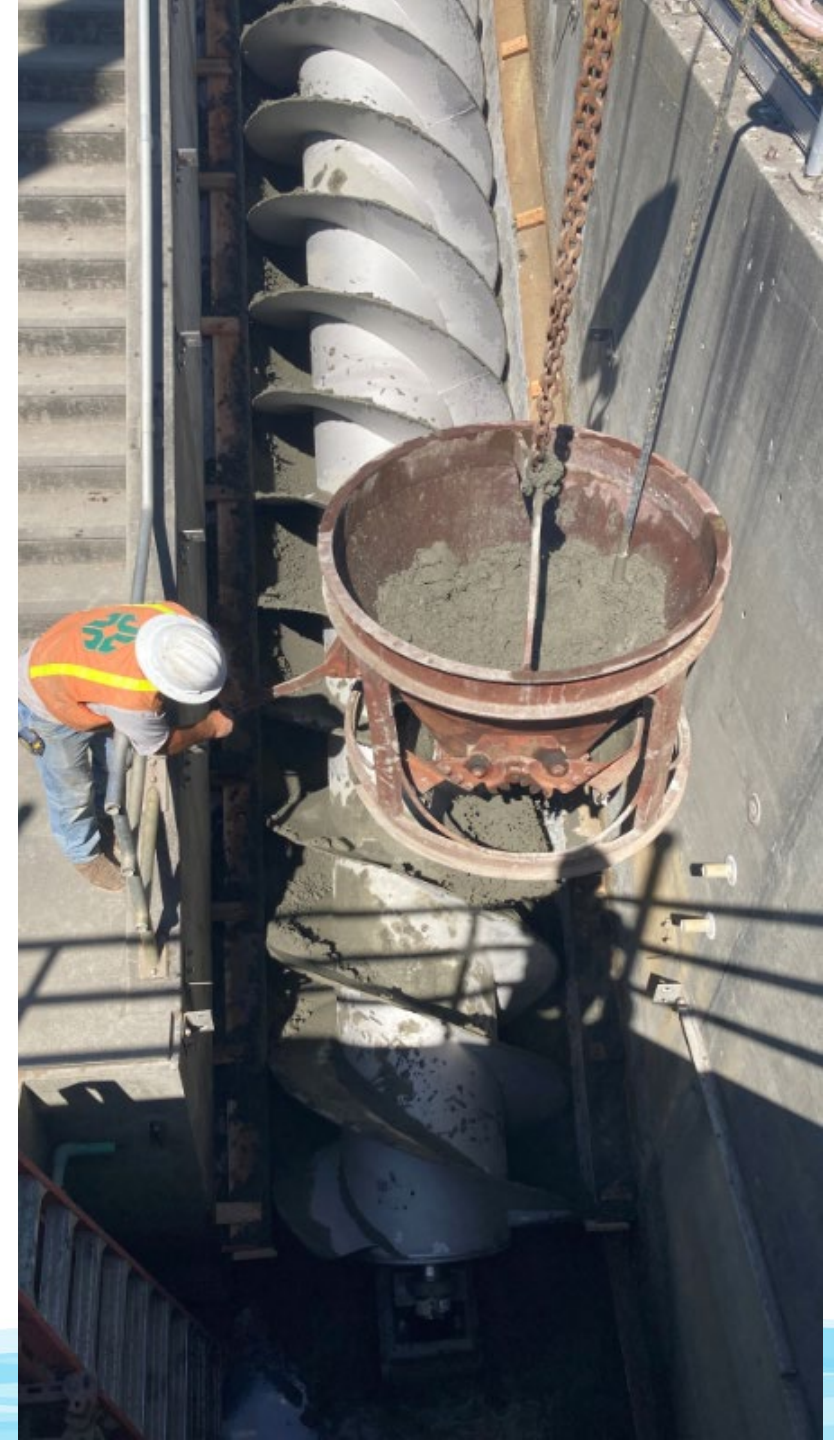
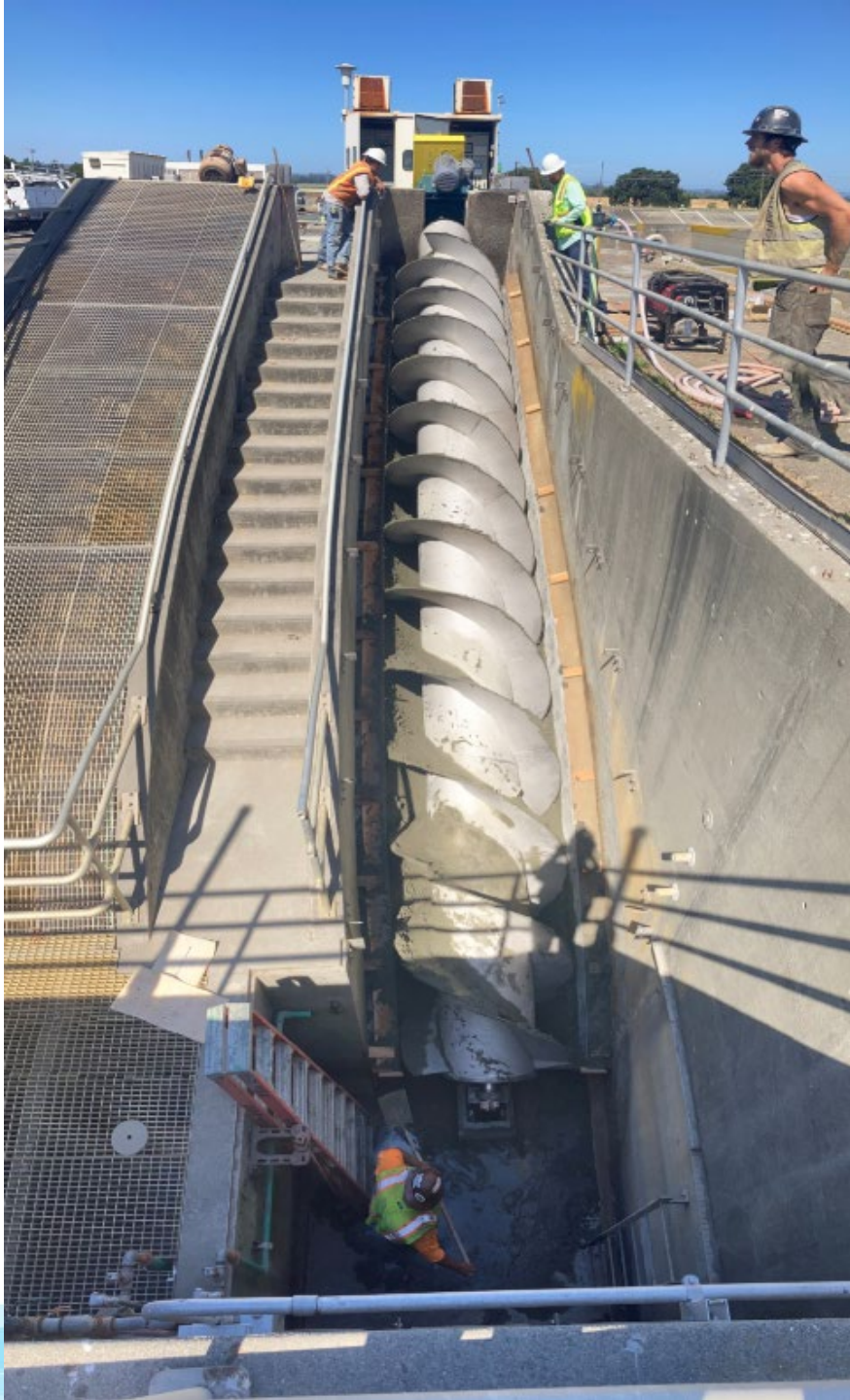






PERP Replacement







Geysers – Delta Pond Connection





Disinfection Upgrade Project













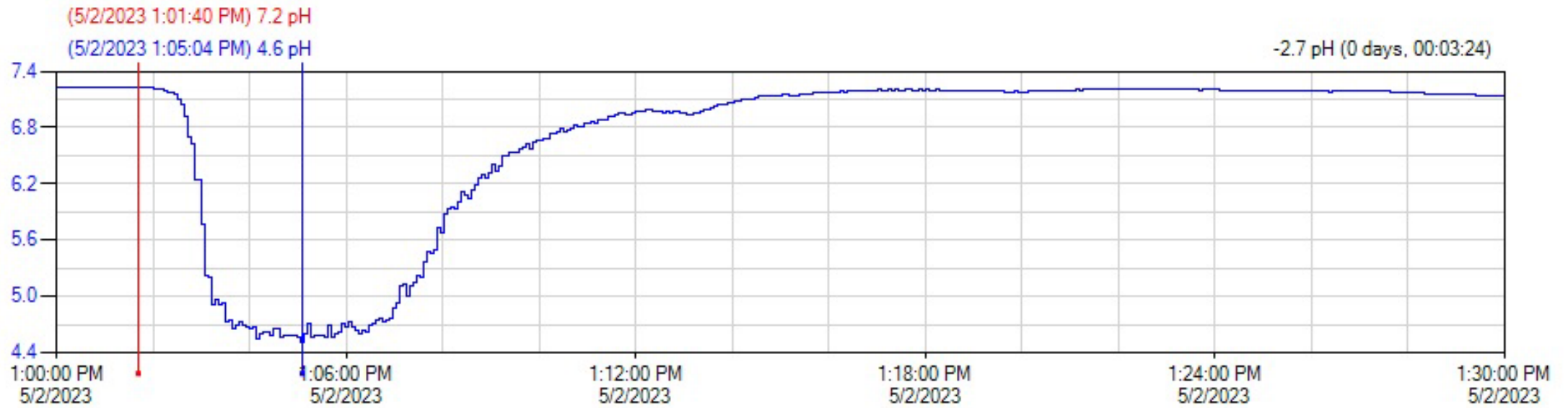


Winery Waste?





Primaries



pH signature from SCADA

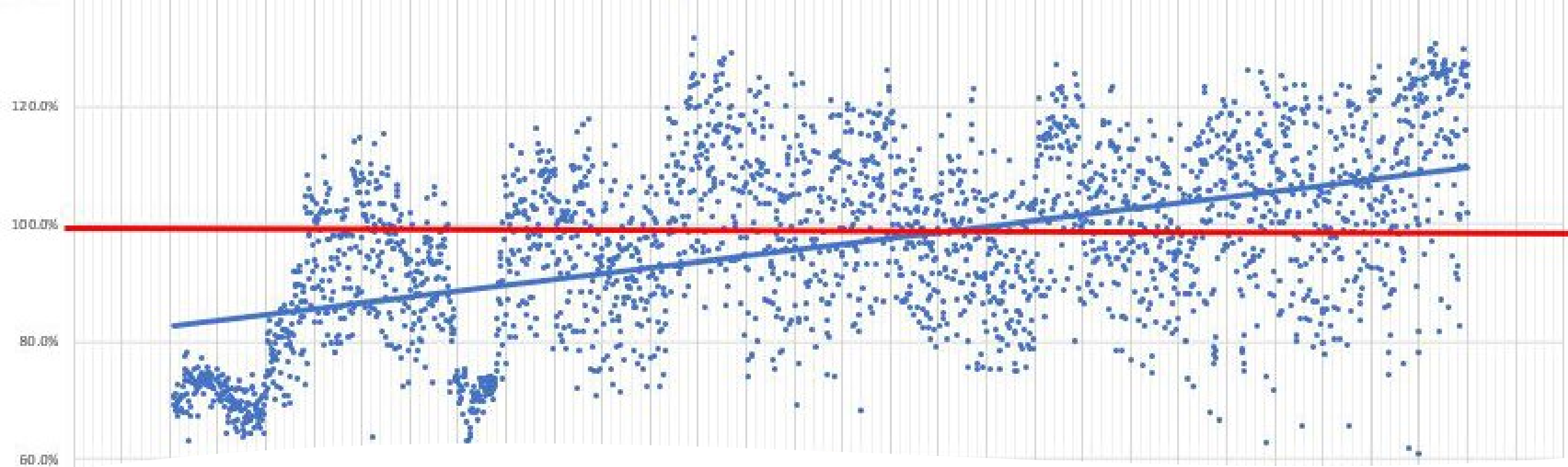


4TL2526

WEST ARK










Winery Waste








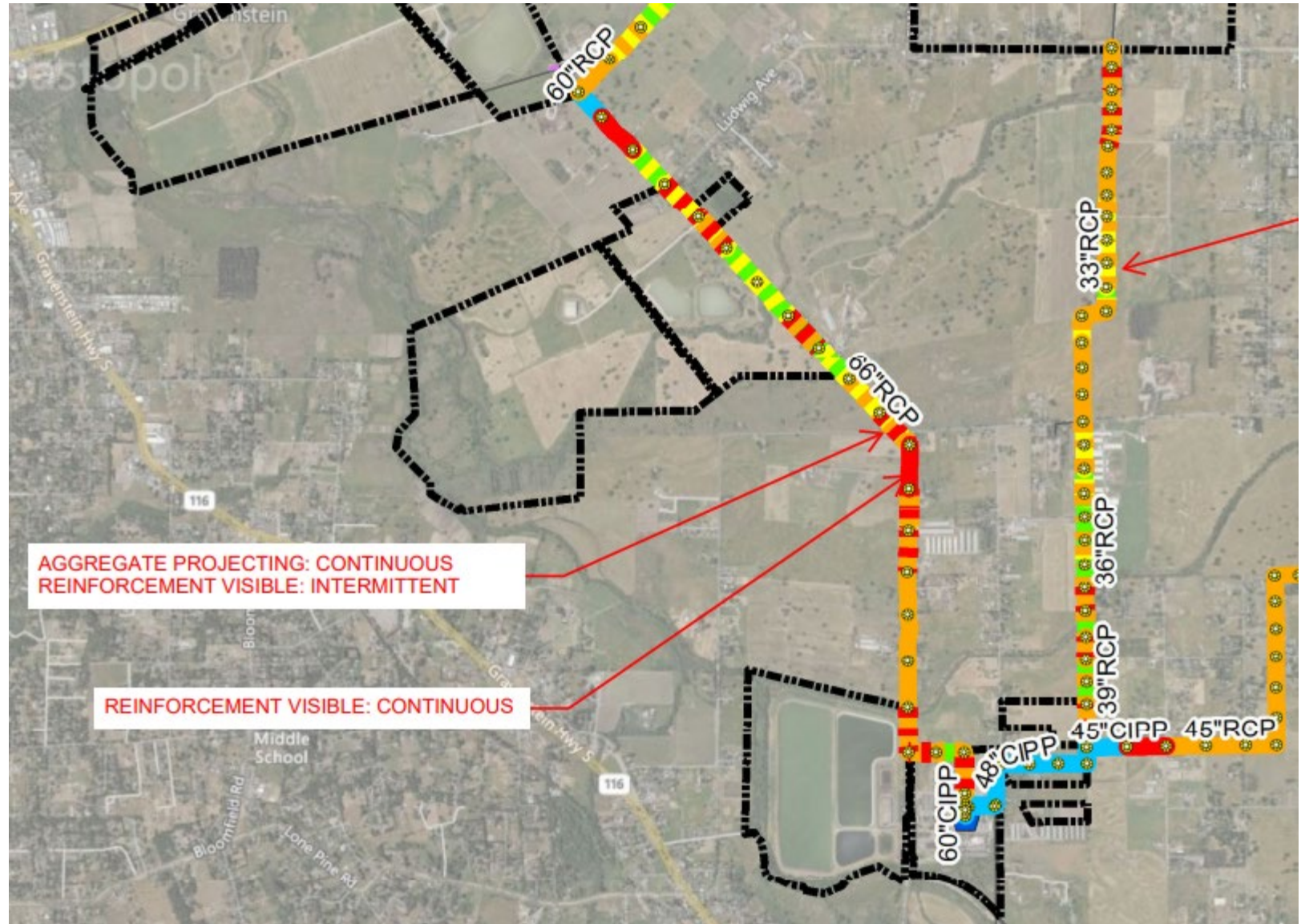
HSW Gas
Production /
Treatment Limit

(Jan, 2016- Jun 2023)

-  Trunk Line Manholes
-  Reinforcement Visible: Continuous
-  Reinforcement Visible: Intermittent
-  Aggregate Projecting: Continuous
-  Aggregate Projecting: Intermittent
-  Aggregate Visible: Continuous
-  Aggregate Visible: Intermittent
-  Surface Spalling: Continuous
-  Surface Spalling: Intermittent
-  No Significant Defects

CITY SEWER

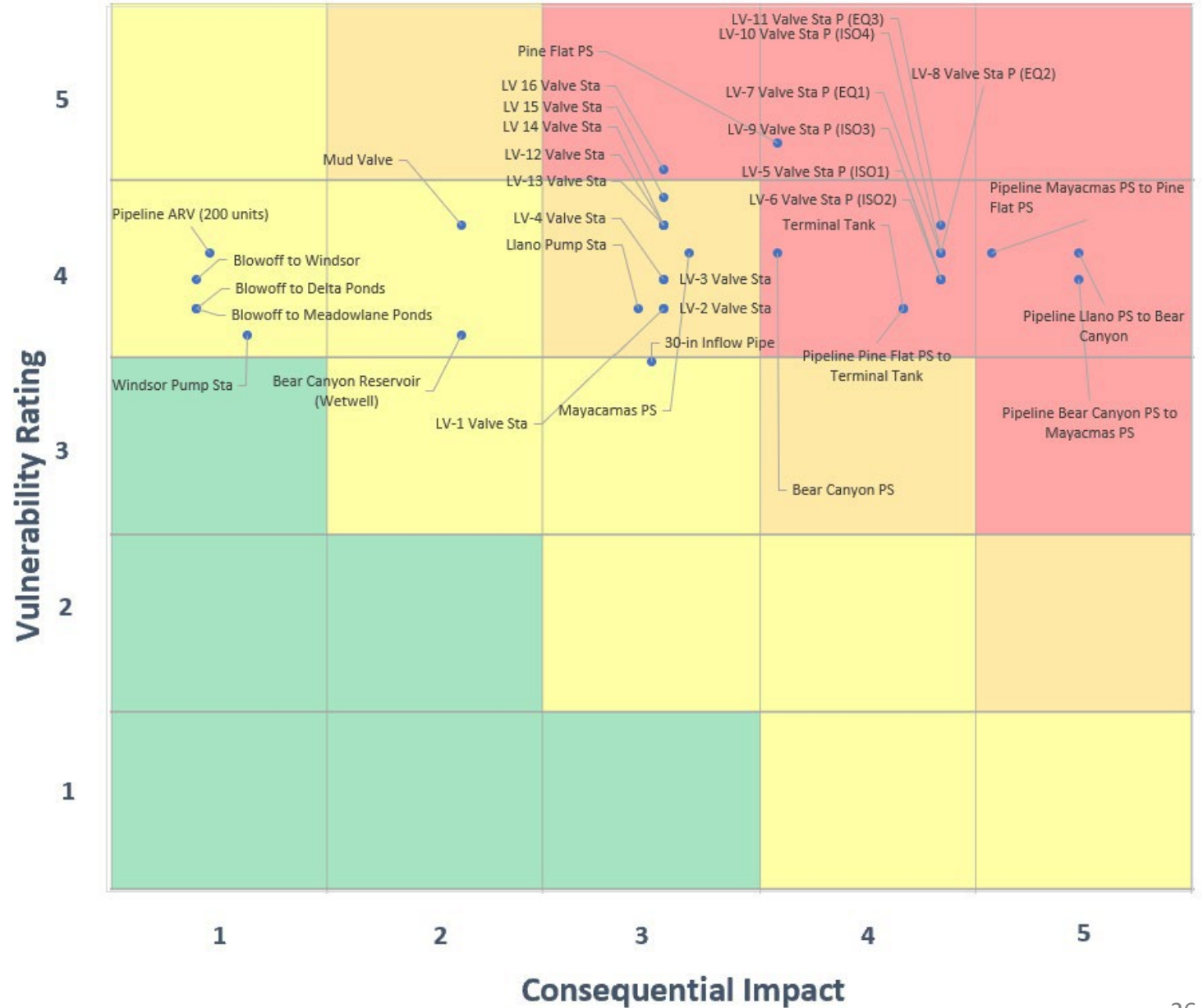
-  GRAVITY MAIN
-  FORCE MAIN
-  CITY LIMITS
-  LIFT STATION
-  LAGUNA TP



Geysers BRVA

LTP next...

Business Risk & Vulnerabilities Risk Map



CELEBRATING 20 YEARS

A Reliable, Responsible Recycled Water Delivery Partnership
With Geothermal Operations at The Geysers

SANTA ROSA GEYSERS RECHARGE PROJECT

Santa Rosa Water and Calpine Corporation invite you to celebrate the 20-year anniversary of the Santa Rosa Geysers Recharge Project. Completed in 2003, the \$220 million dollar project took 7 years to plan and design and 3 years to construct. The project now produces enough clean and renewable electricity to power 100,000 homes in the North Bay annually.



YOU'RE INVITED

Friday, November 3, 2023

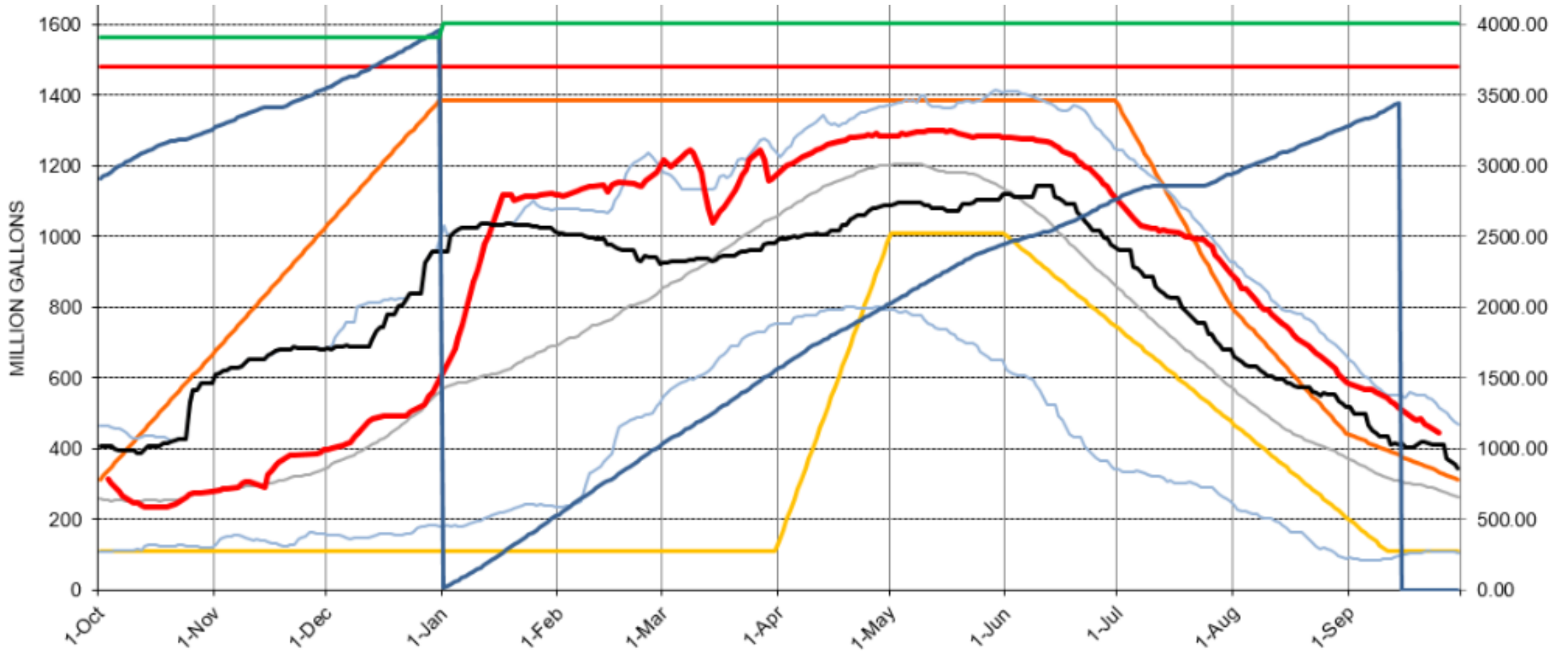
Please RSVP

Celebration & Refreshments 9 a.m. to 10 a.m.
Tour of Calpine's Geothermal Operations
@ The Geysers 10:30 a.m to 3:30 p.m.
Calpine Geothermal Visitors Center
15500 Central Park Road
Middletown, CA

Geysers Recharge Pipeline



Current Recycled Water Storage





Questions?