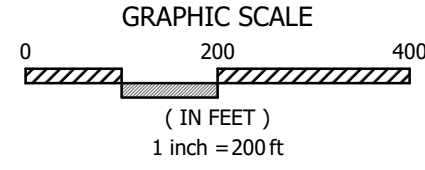
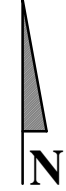


- Existing Land Use
- Residential - Single Family
  - Residential - Multi Family
  - Residential - Senior
  - Residential - Mobile Home
  - Common Area
  - Business - Office
  - Business Strip
  - Business - Shopping Center
  - Business - Motel
  - Public / Institutional
  - Industrial - Light
  - Industrial - Heavy
  - Industrial - Warehouse
  - Recreation
  - Creek / Waterway
  - Educational
  - Landscape
  - Open Space
  - Parking
  - Private Road
  - Railroad Right-of-Way
  - Vacant - Very Low Density
  - Vacant - Low Density
  - Vacant - Med Low Density
  - Vacant - Medium Density
  - Vacant - Med High Density
  - Vacant - Mobile Home
  - Vacant - Light Industrial
  - Vacant - Light Industrial / Med Density
  - Vacant - General Industrial
  - Vacant - Business Park
  - Vacant - Commercial
  - Vacant - Transit Village Med Density
  - Vacant - Transit Village Mixed Use
  - Vacant - Public / Industrial
  - Vacant - Educational
  - Vacant - Office
  - Vacant - Office / Medium



City of Santa Rosa  
Planning & Economic  
Development Department  
09/18/2023  
RECEIVED

NOT FOR CONSTRUCTION

BC ENGINEERING GROUP, INC.  
CIVIL ENGINEERING & LAND PLANNING  
www.bcengineeringgroup.com  
Phone: 707.542.4321  
2800 Cleveland Ave, Suite B  
Santa Rosa, CA 95403



LANDS OF POL  
CITY OF SANTA ROSA ZONING & EXISTING  
LAND USE MAP  
JOHN POL  
5817 HIGHWAY 12  
SANTA ROSA, CA 95409

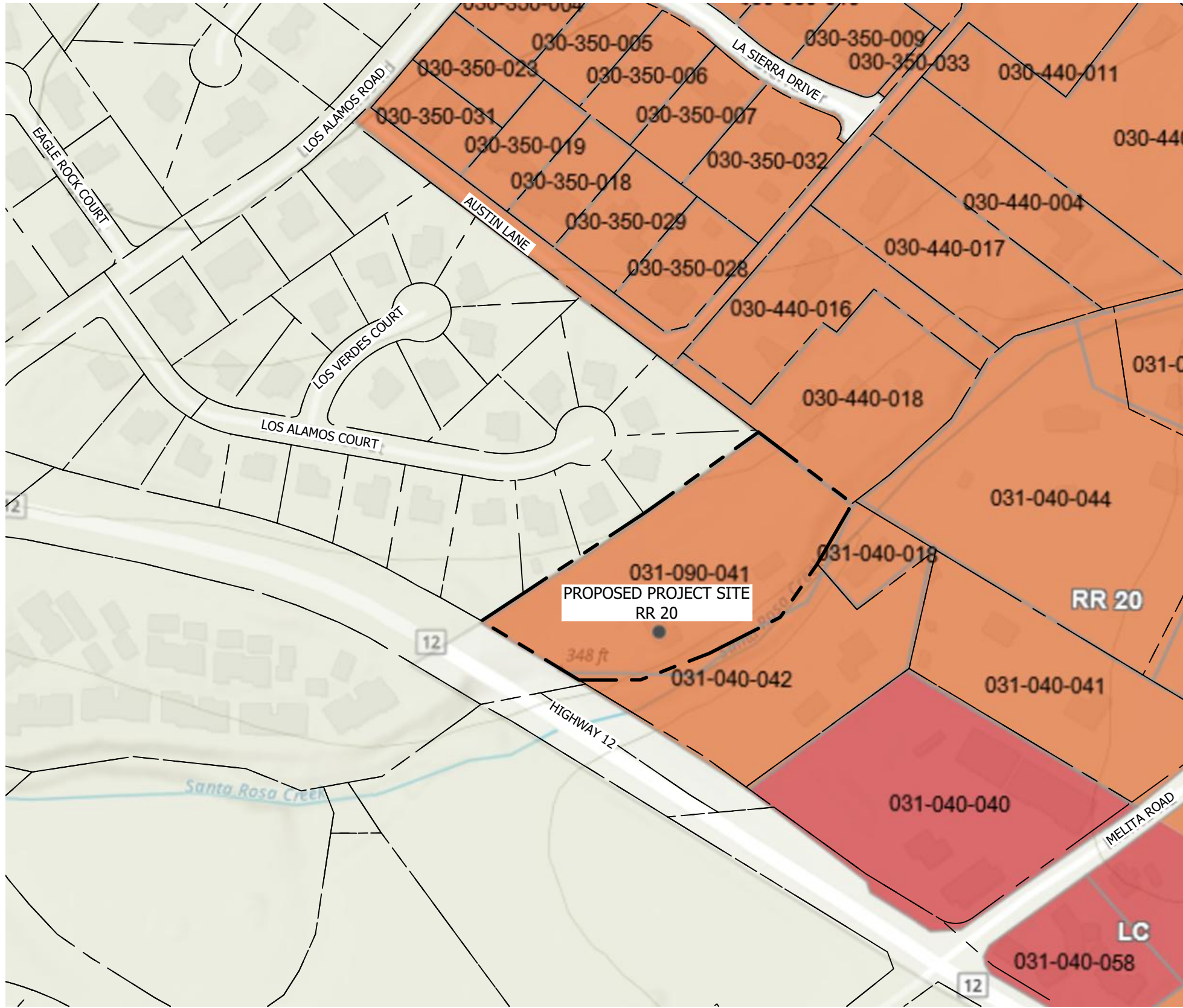
APN:031-090-041

Date: 07/31/2023

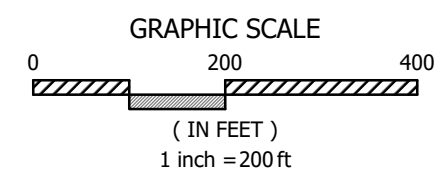
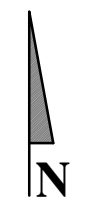
Job: 2769-22

Drawn: CD

EXHIBIT



- Land Use
- DA - Diverse Agriculture
  - GC - General Commercial
  - GI - General Industrial
  - LC - Limited Commercial
  - LEA - Land Extensive Agriculture
  - LI - Limited Industrial
  - LIA - Land Intensive Agriculture
  - PQP - Public/Quasi Public
  - RR - Rural Residential
  - RRD - Resources & Rural Development
  - RVSC - Recreation & Visitor-Serving Commercial
  - SDC - Sonoma Developmental Center
  - UR - Urban Residential



BC ENGINEERING GROUP, INC.  
CIVIL ENGINEERING & LAND PLANNING

www.bcengineeringgroup.com  
Phone: 707.542.4321  
2800 Cleveland Ave, Suite B  
Santa Rosa, CA 95403

LANDS OF POL  
COUNTY OF SONOMA ZONING & EXISTING  
LAND USE MAP  
JOHN POL  
5817 HIGHWAY 12  
SANTA ROSA, CA 95409

APN:031-090-041  
Date: 07/31/2023  
Job: 2769-22  
Drawn: CD

**EXHIBIT**

NOT FOR CONSTRUCTION