

COMPASS-USA-SANTA ROSA HOSPITAL CONCESSION TRUCK

INDEX OF DRAWINGS

- 1) COVER SHEET
- 2) NOTES
- 3) EXTERIOR ELEVATIONS
- 4) FLOORPLAN
- 5) FLOORPLAN NOTE
- 6) CURBSIDE INTERIOR LAYOUT
- 7) ROADSIDE INTERIOR LAYOUT
- 8) ELECTRIC & NETWORKING PLAN
- 9) ROADSIDE INTERIOR ELECTRICAL LAYOUT
- 10) CURBSIDE INTERIOR ELECTRICAL LAYOUT
- 11) FRESH WATER PLUMBING SYSTEM
- 12) DRAIN LINE PLUMBING SYSTEM
- 13) LP GAS LINE SYSTEM
- 14) FIRE SUPPRESSION(a)
- 15) FIRE SUPPRESSION(b)
- 16) HOOD/EXHAUST FAN INFO

CALIFORNIA

APPROVED : State of CA-Certified Design Approval Agency
Review of these plans and/or specifications does not
authorize or approve any deviation from requirements of
State laws or applicable local ordinances.

P.A. # TRA- 8580 DATE
ISSUED: 10/26/2022

EXP. **FEB 29, 2024**
DATE

Reviewed By Michael A. Tomko

T.R. Arnold & Associates, Inc. Telephone (574) 264-0745
4703 Chester Drive, Elkhart, IN 46516

B	ADDED TANK NOTES PER REGULATORY, SHEET 12	CRS	10/24/2022	XXXX
B	ADDED CABINETS FOR DROP-IN EQUIPMENT	CRS	10/01/2022	XXXX
A	NEW PRINT	RJG	8/18/2022	XXXX
REV	DESCRIPTION	BY	DATE	ECN#
DRAWN BY	DATE	PLOT SCALE	DESCRIPTION	
R.GRUBER	08/18/2022	N.T.S.	COMPASS-USA-SANTA ROSA HOSPITAL 22' MORGAN STEP VAN FLOORPLAN	
ALL DIMENSIONS ARE IN INCHES UNLESS OTHERWISE NOTED		DRAWING TOLERANCES +/- .050 (DECIMAL) +/- 1/16 (FRACTIONAL)		BOM NO. XXXXXXXX
THIS DRAWING AND THE INFORMATION CONTAINED WITHIN ARE THE EXCLUSIVE PROPERTY OF DELIVERY CONCEPTS, INC. IT SHALL NOT BE DUPLICATED WITHOUT WRITTEN CONSENT OF DCI			SERIES MK	SHEET OF 1 16
			DWG. NO.	MK00164

APPLICABLE CODES:
 SPCM CA HSC 18012.5
 CA HEALTH AND SAFETY CODE SECTION 18028
 CCR TITLE 25, CHAPTER 3, SUBCHAPTER 3.5, ARTICLE 1, 3.5
 CA HSC DIV. 104 PART 7, CHAPTER 4, ARTICLE 12
 2019 CBC, 2019 CEC, 2019 CMC (where applicable)

GENERAL

- Unit meets definition of S.P.C.M. "A vehicle, with or without motive power, designed and equipped for human occupancy for industrial, professional, or commercial purposes, which is not required to be moved under permit...." (Refer to Title 25 for special regulations pertaining to mobile food preparation units.)
- Unit has minimum of two (2) exits located remote from each other. 4528(a)
- Alternate egress is located inside opposite entrance door, on the roof, or on the rear. 4528(e)
- Alternate egress is minimum 24" X 24" clear (roof) or minimum 20"x24" (opposite or rear) 4528(e)
- Bottom of Alternate Egress is within 4' of floor or surface capable of supporting 300#. 4528(f)
- Alternate egress is operable by hand, without use of tools or special keys. 4528(g)
- Alternate egress is labeled with "EXIT" in 1" high letters. 4528(h)
- Aisle ways are 30" minimum width & 74" minimum ceiling height. 4530(a)
- Glass and glazing conform to the requirements of Article 3, Division 1, Section 4731 (Chapter 24 of 2019 CBC)
- Unit meets all applicable fire safety requirements.
- Fire extinguishing systems installed in all units containing commercial heat-processing

ELECTRICAL

- Electrical system complies with applicable provisions of 2019 CEC; 2017 NEC; Title 25, Article 3, Sub Article 3
- Low-Voltage (24 Volt or less) systems comply with applicable provisions of Section 4383.
- Maximum ampacities of overcurrent protection devices: 18 ga. - 6 Ampere; 16 ga. - 8 Ampere; 14 ga. - 15 Ampere; 12 ga. - 20 Ampere; 10 ga. - 30 Ampere.
- Overcurrent protection within 18" of point where power supply connects to vehicle circuits.
- Battery installations per requirements. 4383
- Combination systems per requirements. 4387
- Converter load calculations supplied if applicable. 4387
- Generator compartments constructed of galvanized steel at least 0.0299" thick. 4389(e)
- Fuel-fired engine driven generator units per requirements. 4389 (a thru j)
- No double power cords.
- Dual supply systems. 4390
- All equipment properly grounded. 4402; CEC Article 250
- Bath and exterior receptacles GFCI protected. 4404
- No auto-transformers. 4387(e)
- Fixtures / appliances having both 120-volt and low-voltage connections must be listed and approved for dual voltage. 4387(d)(f)
- Identification of electrical system. 4394
- Rodent resistance. 4398
- Equipment mounting. 4400
- Outdoor or under-chassis wiring. 4397

FUEL SUPPLY SYSTEM

- LP container compartments vapor-tight to inside of unit. 4516.1(b)
- LP containers not inside unit. 4516.1(a)
- LP containers mounted to frame. 4516.1(b), 4516.7
- LP containers mounted and secured with proper safety factors. 4516.1(b)(c)
- Valves properly installed. 4516.1(c)(3)
- Valves properly protected. 4516.1(c)(3)
- Regulators properly connected. 4516.3(a)(b)(c)
- Safety relief devices. 4516.5
- Compartment ventilation. 4516.1(d)

PIPING SYSTEMS

- Piping materials approved for purpose (copper tubing to be Type K or L (ASTM B88-66)
- System designed for LP only; LP / Natural Gas; or natural gas only. 4517.1
- Gas pipe sizing. 4517.3, 2019 CPC Sec. 1208.4
- Supply connection properly identified. 4534 (g)
- Motor fuel and LP Re-fueling warning on all motor homes and truck campers having combustion air inlet below roof level.
- Gas inlet caps provided and secured. 4517.6
- Screw pipe joints made by ground joint unions. 4534(b)
- Pipe testing. 4520.2
- Gas pipe not used as electrical ground. 4518(b)
- Rodent resistance. 4521

HEAT-PRODUCING APPLIANCES

- Heat-producing appliances listed for use. 4473(a)
- Appliances (except ranges and ovens) shall be designed for complete separation between combustion system and interior atmosphere of RV
- Ducts constructed of approved material

Dust system tested with manometer.

- Provisions made for return air from all spaces except toilet rooms.
- Fuel-burning furnace and water heater enclosures are lined with 5/16" gypsum or equivalent.
- Range areas have maximum 50 flame spread.
- Unit complies with all applicable requirements of 2019 CMC.
- Cross-over duct support. 4495(b)
- Appliance securement. 4520.1

TRAPS AND CLEAN-OUTS

- Fixtures without integral traps protected by an approved trap. CEC 1001.2
- Dual fixtures on one trap not over 30" apart. CPC 1001.2
- No "S", bell, drum, or crown vented traps. CPC 1004.0
- No fixtures double-trapped. CPC 1004.0
- No traps less than 1-1/4". CPC Table 10-1
- Tail piece not longer than 24". CPC 1001.4
- Trap arm to vent shall not offset horizontally more than 180°.
- Cleaning tool shall not be required to pass through more than 135° to reach any part of the drainage system. CPC 707.4
- Air gap at food preparation equipment CPC 801.2.3

PLUMBING FIXTURES

- Toilet listed or approved.
- Mechanical seal toilets not containing built-in waste storage shall be connected directly to an approved holding tank.
- Shower stalls equipped with approved receptor.

WATER DISTRIBUTION SYSTEM

- Potable water tanks listed and met requirements. 4519.1
- Drain plug at lowest point or points in water distribution system.
- Service connection provided with 3/4" female swivel hose connector with cap.
- No part of water supply system connected to drain or vent system. CPC 602.1
- Pressure water storage system having connection for outside supply equipped with approved back flow preventer. CPC 603.2
- Hot water system provided with approved T & P safety devices. CPC 505.4, 505.6, 506.2, 608.2
- Relief valve equipped with proper drain. CPC 608.4, 608.3
- Pressure water storage tanks equipped with relief valve above maximum water level.
- Supply pipes properly sized. CPC 610.0
- Potable water supply properly labeled. CPC 601.2
- Water supply connection terminates within 18" of outside wall + watertight cap or plug. 4519

DRAINAGE SYSTEM

- DWV pipe and fittings approved or listed. CPC 701.0
- Drainage piping properly sized. CPC 703.0
- Wet vents one size larger than largest connected fixture. CPC 908.1.2
- Not over 4 fixtures on wet-vented system. CPC 908.1.1
- Trap arm lengths comply with requirements. CPCTable 10-1
- Horizontal to vertical connections made with 45° Y, 60° Y, Long Turn T-WYE, San T, or other approved fittings. CPC 706.0
- Horizontal to horizontal and vertical to horizontal connections made with 45° Y, 60° Y, Long Turn T-Wye, San T, or other approved fittings. CPC 706.3
- Units with waste holding tank and toilet equipped with mechanical seal or chemical re-circulating toilet.
- Holding tank properly vented.
- Drain outlets properly located.
- Drain outlet capped properly.
- Overflow CRFC 114213

VENTS AND VENTING

- Vent materials listed or approved. CPC 903.0
- Vents not less than 1-1/4". CPC 904.1; Table 7-5
- Vent offsets conform to requirements. CPC 905.3
- Vents designed to drain back to drainage system by gravity. CPC 905.1
- Vent terminations at least 3'-0" from power air intakes. CPC 906.2
- Anti-siphon trap vents. 4534(h)

SERVING WINDOWS

- All glass shall meet the requirements for safety glazing per Title 23 Part 2 Of the 2019 CBC chapter 24

APPROVED : State of CA-Certified Design Approval Agency
 Review of these plans and/or specifications does not authorize or approve any deviation from requirements of State laws or applicable local ordinances.

P.A. # TRA- 8580 DATE ISSUED: 10/26/2022

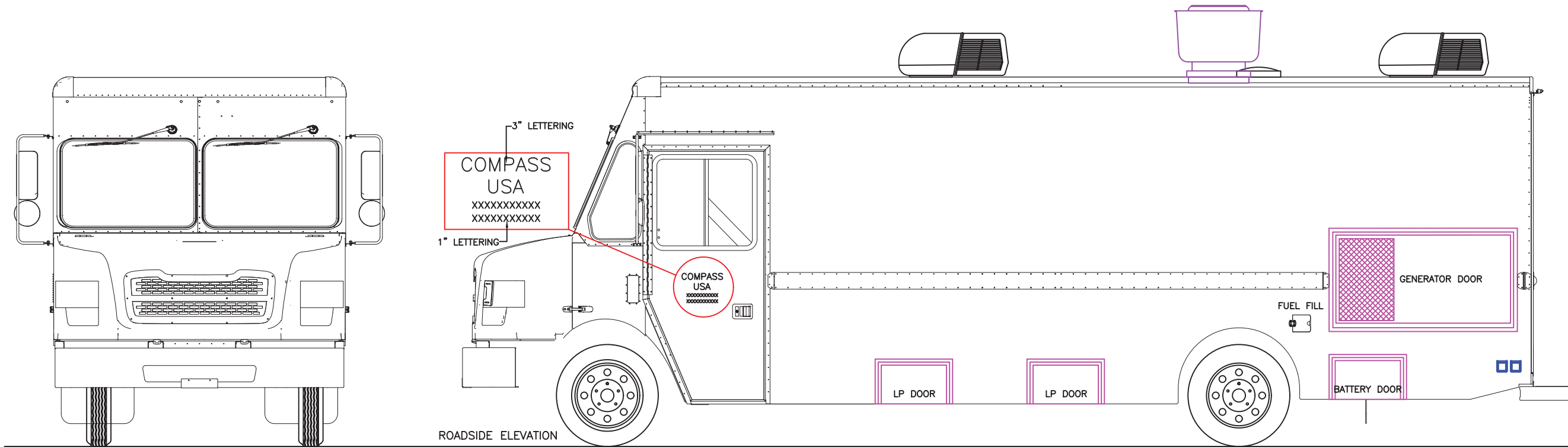
EXP. DATE **FEB 29, 2024**

Reviewed By Michael A Jenko

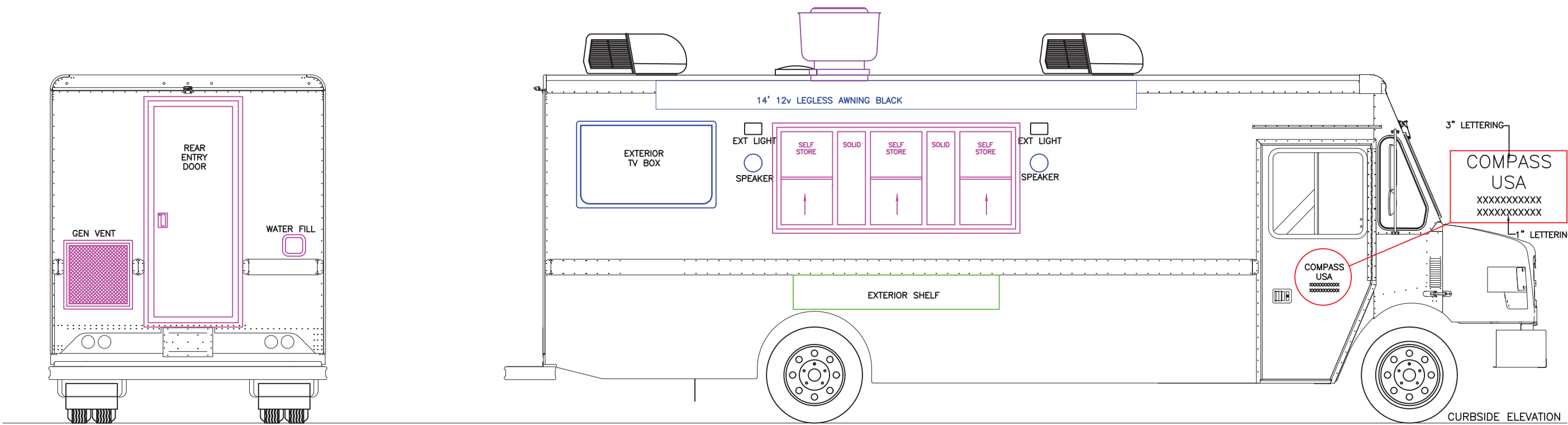
T.R. Arnold & Associates, Inc. Telephone (574) 264-0745
 4703 Chester Drive, Elkhart, IN 46516

CALIFORNIA

DRAWN BY R.GRUBER	DATE 8/18/2022	PLOT SCALE N.T.S.	DESCRIPTION COMPASS-USA-SANTA ROSA HOSPITAL 22' MORGAN STEP VAN NOTES	DELIVERY CONCEPTS, INC. 1005 3rd STREET, OSCEOLA, IN 46561
ALL DIMENSIONS ARE IN INCHES UNLESS OTHERWISE NOTED			DRAWING TOLERANCES +/- .050 (DECIMAL) +/- 1/16 (FRACTIONAL)	BOM NO. XXXXXXXX
THIS DRAWING AND THE INFORMATION CONTAINED WITHIN ARE THE EXCLUSIVE PROPERTY OF DELIVERY CONCEPTS, INC. IT SHALL NOT BE DUPLICATED WITHOUT WRITTEN CONSENT OF DCI			SERIES MK	DWG. NO. MK00164
		SHEET 2	OF 16	



ROADSIDE ELEVATION



CURBSIDE ELEVATION

APPROVED : State of CA-Certified Design Approval Agency
 Review of these plans and/or specifications does not
 authorize or approve any deviation from requirements of
 State laws or applicable local ordinances.

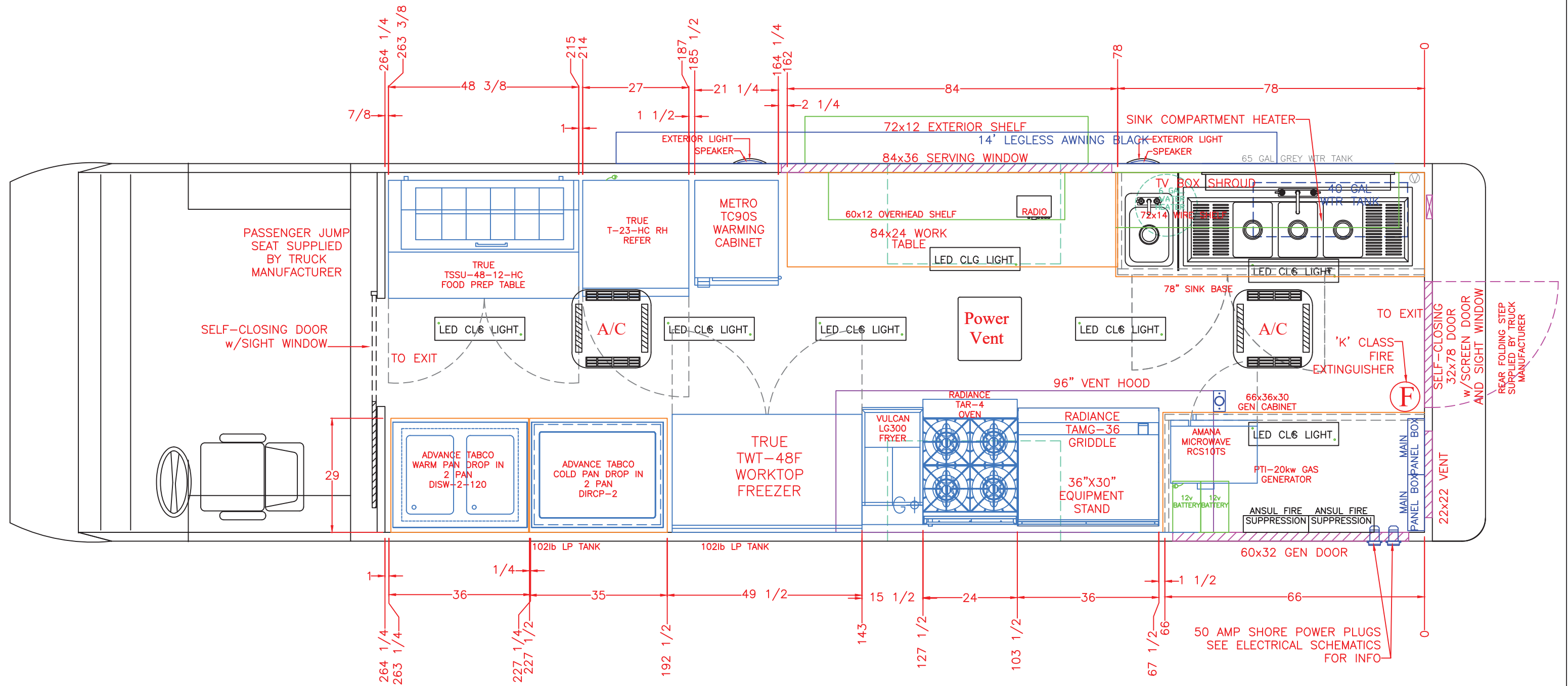
P.A. # TRA- 8580 DATE
 EXP. ISSUED: 10/26/2022
 DATE **FEB 29, 2024**

Reviewed By *Michal A Tomko*

T.R. Arnold & Associates, Inc. Telephone (574) 264-0745
 4703 Chester Drive, Elkhart, IN 46516

CALIFORNIA

DRAWN BY R.GRUBER	DATE 8/18/2022	PLOT SCALE N.T.S.	DESCRIPTION COMPASS-USA-SANTA ROSA HOSPITAL 22' MORGAN STEP VAN EXTERIOR ELEVATIONS	DELIVERY CONCEPTS, INC. 1005 3rd STREET, OSCEOLA, IN 46561
ALL DIMENSIONS ARE IN INCHES UNLESS OTHERWISE NOTED			DRAWING TOLERANCES +/- .050 (DECIMAL) +/- 1/16 (FRACTIONAL)	BOM NO. XXXXXXX
THIS DRAWING AND THE INFORMATION CONTAINED WITHIN ARE THE EXCLUSIVE PROPERTY OF DELIVERY CONCEPTS, INC. IT SHALL NOT BE DUPLICATED WITHOUT WRITTEN CONSENT OF DCI			SERIES MK	DWG. NO. MK00164
		SHEET 3	OF 16	



Floor Plan

CALIFORNIA

APPROX. 9 HOURS OF LP GAS

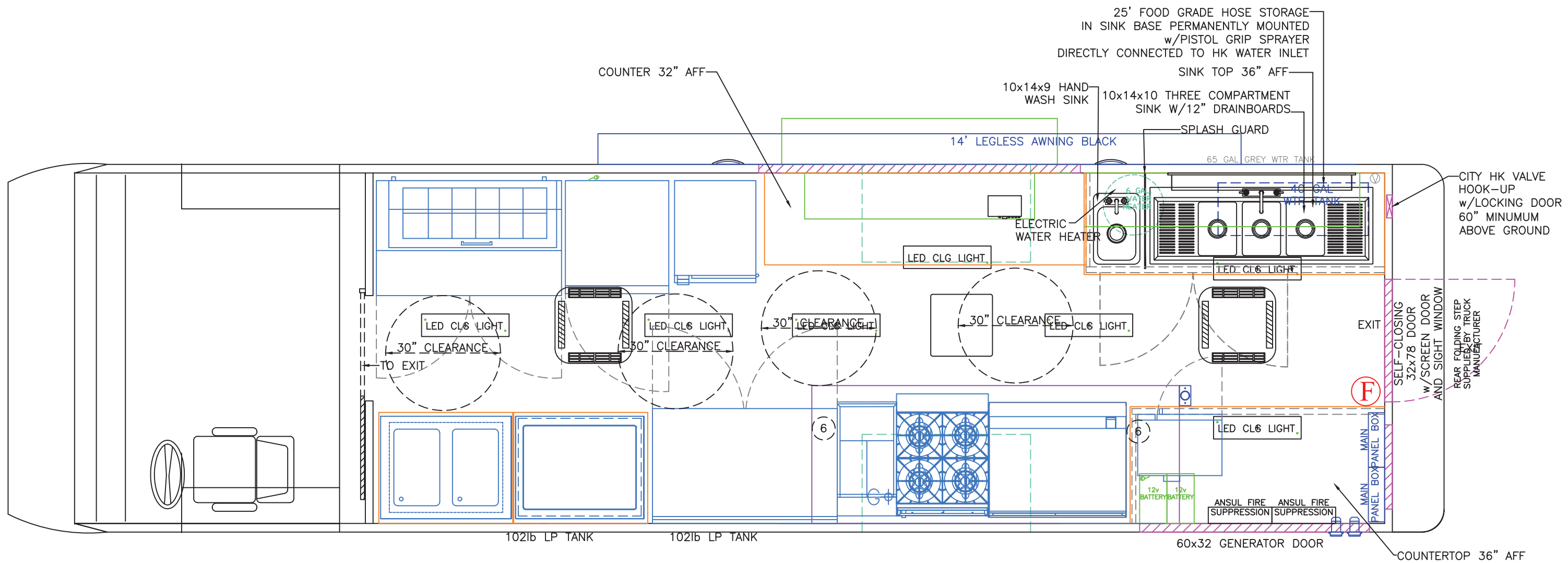
APPROVED : State of CA-Certified Design Approval Agency
 Review of these plans and/or specifications does not
 authorize or approve any deviation from requirements of
 State laws or applicable local ordinances.

P.A. # TRA- 8580 DATE
 ISSUED: 10/26/2022
 EXP.
 DATE **FEB 29, 2024**

Reviewed By *Michael A. Tomko*

T.R. Arnold & Associates, Inc. Telephone (574) 264-0745
 4703 Chester Drive, Elkhart, IN 46516

DRAWN BY R.GRUBER	DATE 8/18/2022	PLOT SCALE N.T.S.	DESCRIPTION COMPASS-USA-SANTA ROSA HOSPITAL 22' MORGAN STEP VAN FLOORPLAN	DELIVERY CONCEPTS, INC. 1005 3rd STREET, OSCEOLA, IN 46561
ALL DIMENSIONS ARE IN INCHES UNLESS OTHERWISE NOTED		DRAWING TOLERANCES +/- .050 (DECIMAL) +/- 1/16 (FRACTIONAL)		BOM NO. XXXXXXXX
THIS DRAWING AND THE INFORMATION CONTAINED WITHIN ARE THE EXCLUSIVE PROPERTY OF DELIVERY CONCEPTS, INC. IT SHALL NOT BE DUPLICATED WITHOUT WRITTEN CONSENT OF DCI			SERIES MK	DWG. NO. MK00164
		SHEET 4	OF 16	



NOTES:

- 1.) Floors, walls, ceilings are impervious/ Smooth and easily cleanable/ slip resistant and, the floor & wall juncture shall be covered with a min. 3/8" coving with the floor surfaces extending up the wall at least 4".
- 2.) Floor surfaces where cooking processes are conducted are to be impervious (smooth, easily cleanable, slip resistant) and shall extend a minimum of 5' on all open sides where the cooking processes are conducted.
- 3.) All caulks or sealants used in the cooking & food preparation areas are to be approved for such use (food grade).

NOTE: GENERATOR COMPARTMENT TO BE LINED AND SEALED WITH GALVANIZED METAL AND COVERED WITH LEAD LINED SOUND DEADENING MATERIAL

APPROVED : State of CA-Certified Design Approval Agency
 Review of these plans and/or specifications does not authorize or approve any deviation from requirements of State laws or applicable local ordinances.

P.A. # TRA- 8580 DATE ISSUED: 10/26/2022
 EXP. DATE **FEB 29, 2024**

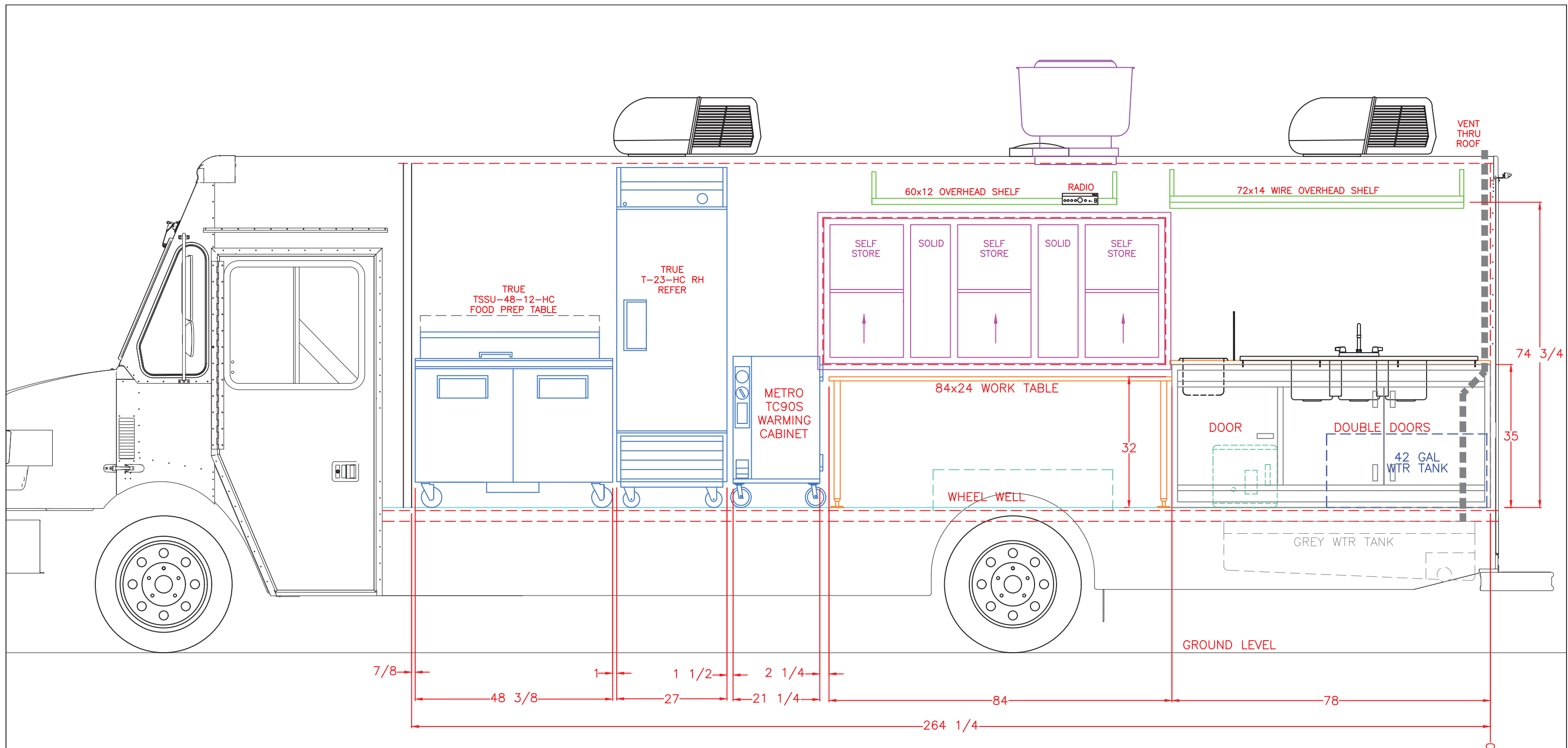
Reviewed By *Michael A. Tomko*

T.R. Arnold & Associates, Inc. Telephone (574) 264-0745
 4703 Chester Drive, Elkhart, IN 46516

CALIFORNIA

FINISH SCHEDULE	
FLOOR	COMMERCIAL GRADE HEAT WELDED VINYL FLOORING RUN 4" UP WALL w/RDIUS COVE
CEILING	.040 WHITE ALUMINUM
WALLS	.040 WHITE ALUMINUM
COUNTERTOPS	14ga STAINLESS STEEL, 304 #3 OR #4 FINISH
WALL SHELVING	18ga STAINLESS STEEL, 304 #3 OR #4 FINISH

DRAWN BY R.GRUBER	DATE 8/18/2022	PLOT SCALE N.T.S.	DESCRIPTION COMPASS-USA-SANTA ROSA HOSPITAL 22' MORGAN STEP VAN FLOORPLAN-NOTES	DELIVERY CONCEPTS, INC. 1005 3rd STREET, OSCEOLA, IN 46561
ALL DIMENSIONS ARE IN INCHES UNLESS OTHERWISE NOTED		DRAWING TOLERANCES +/- .050 (DECIMAL) +/- 1/16 (FRACTIONAL)	SERIES MK	BOM NO. XXXXXXXX
THIS DRAWING AND THE INFORMATION CONTAINED WITHIN ARE THE EXCLUSIVE PROPERTY OF DELIVERY CONCEPTS, INC. IT SHALL NOT BE DUPLICATED WITHOUT WRITTEN CONSENT OF DCI			SHEET OF 5 16	DWG. NO. MK00164



APPROVED : State of CA-Certified Design Approval Agency
 Review of these plans and/or specifications does not authorize or approve any deviation from requirements of State laws or applicable local ordinances.

P.A. # TRA- 8580 DATE ISSUED: 10/26/2022

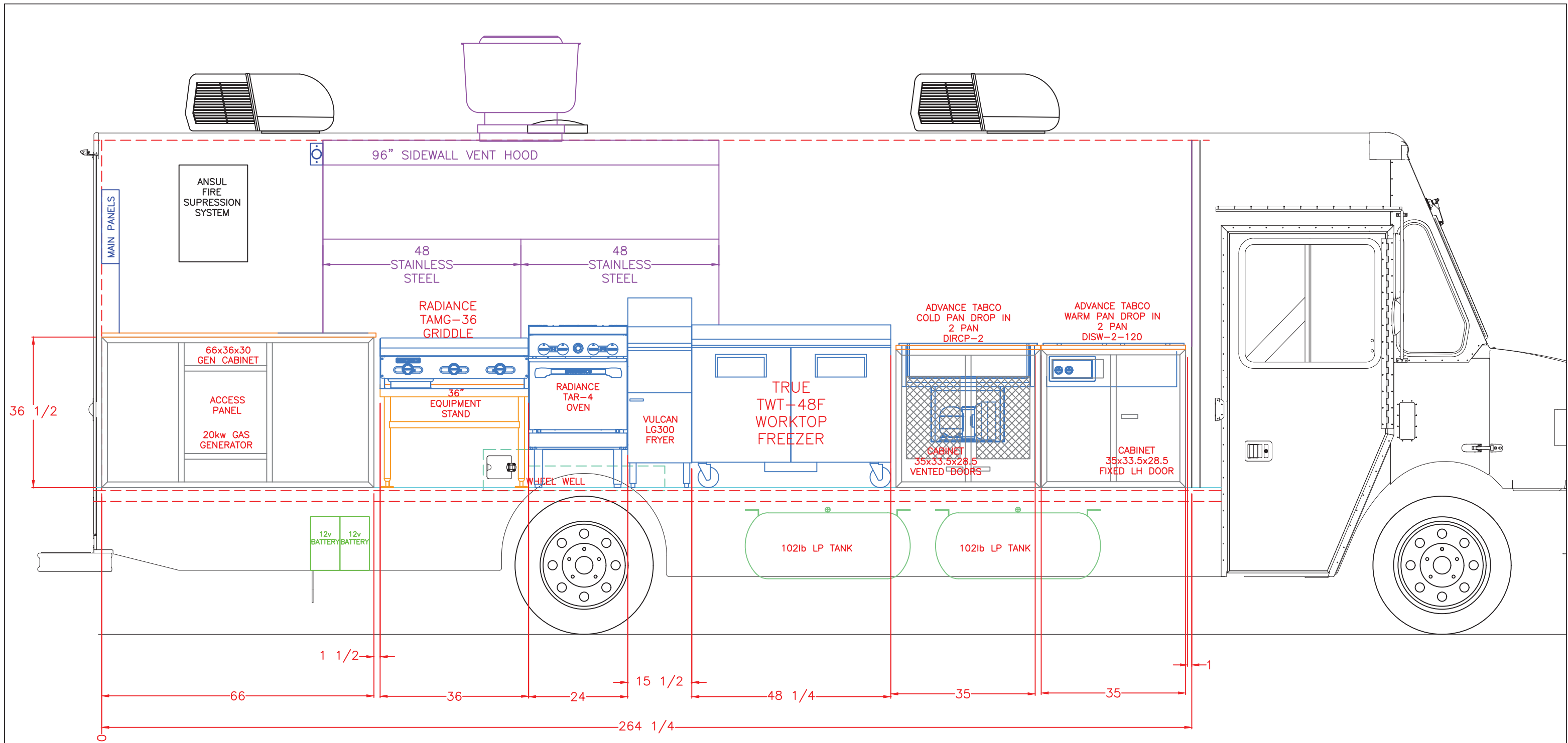
EXP. DATE **FEB 29, 2024**

Reviewed By *Michael A. Jones*

T.R. Arnold & Associates, Inc. Telephone (574) 264-0745
 4703 Chester Drive, Elkhart, IN 46516

CALIFORNIA

DRAWN BY R.GRUBER	DATE 08/18/2022	PLOT SCALE N.T.S.	DESCRIPTION COMPASS-USA-SANTA ROSA HOSPITAL 22' MORGAN STEP VAN CURBSIDE INTERIOR	DELIVERY CONCEPTS, INC. 1005 3rd STREET, OSCEOLA, IN 46561
ALL DIMENSIONS ARE IN INCHES UNLESS OTHERWISE NOTED			DRAWING TOLERANCES +/- .050 (DECIMAL) +/- 1/16 (FRACTIONAL)	BOM NO. XXXXXXXX
THIS DRAWING AND THE INFORMATION CONTAINED WITHIN ARE THE EXCLUSIVE PROPERTY OF DELIVERY CONCEPTS, INC. IT SHALL NOT BE DUPLICATED WITHOUT WRITTEN CONSENT OF DCI			SERIES MK	DWG. NO. MK00164
		SHEET 6	OF 16	



APPROVED : State of CA-Certified Design Approval Agency
 Review of these plans and/or specifications does not
 authorize or approve any deviation from requirements of
 State laws or applicable local ordinances.

P.A. # TRA-8580 DATE
 ISSUED: 10/26/2022

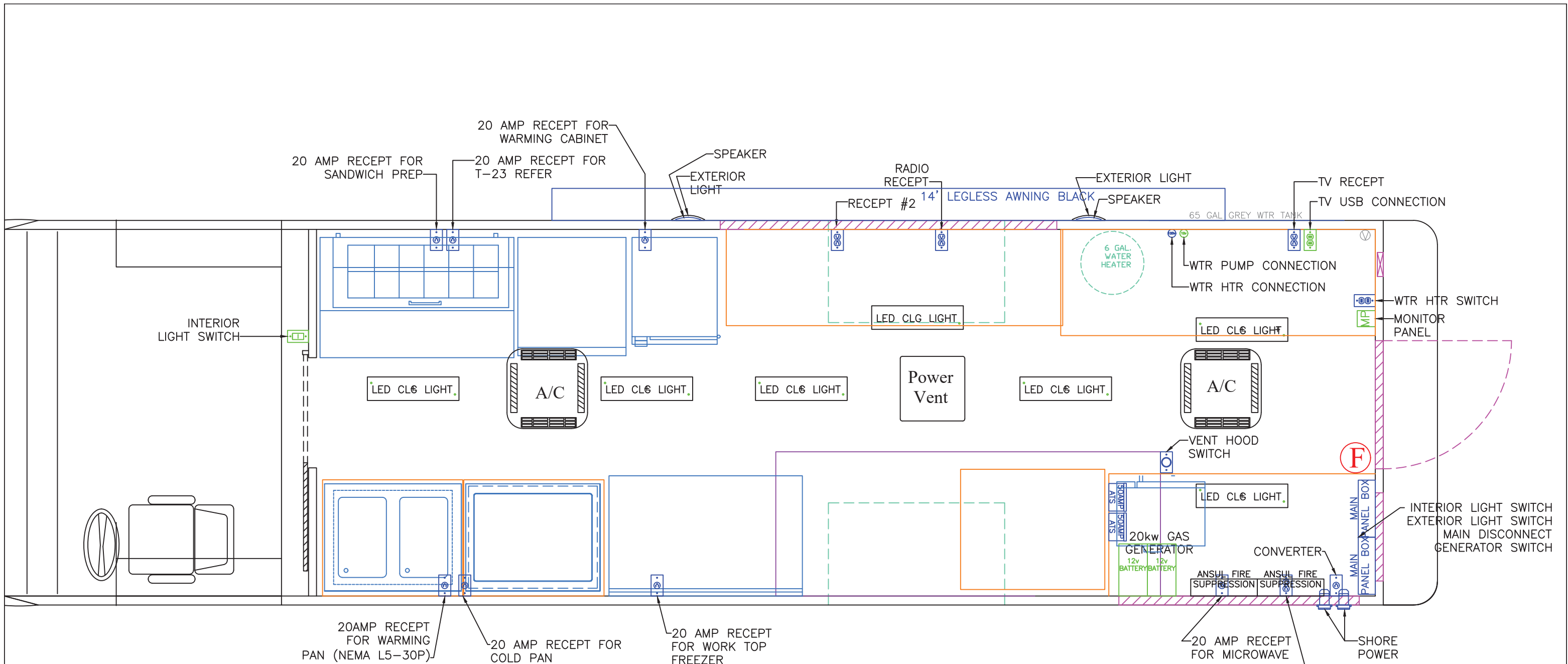
EXP. DATE
FEB 29, 2024

Reviewed By *Michal A Tomko*

T.R. Arnold & Associates, Inc. Telephone (574) 264-0745
 4703 Chester Drive, Elkhart, IN 46516

CALIFORNIA

DRAWN BY R.GRUBER	DATE 08/18/2022	PLOT SCALE N.T.S.	DESCRIPTION COMPASS-USA-SANTA ROSA HOSPITAL 22' MORGAN STEP VAN ROADSIDE INTERIOR	DELIVERY CONCEPTS, INC. 1005 3rd STREET, OSCEOLA, IN 46561
ALL DIMENSIONS ARE IN INCHES UNLESS OTHERWISE NOTED			DRAWING TOLERANCES +/- .050 (DECIMAL) +/- 1/16 (FRACTIONAL)	BOM NO. XXXXXXXX
THIS DRAWING AND THE INFORMATION CONTAINED WITHIN ARE THE EXCLUSIVE PROPERTY OF DELIVERY CONCEPTS, INC. IT SHALL NOT BE DUPLICATED WITHOUT WRITTEN CONSENT OF DCI			SERIES MK	DWG. NO. MK00164
			SHEET 7	OF 16



APPROVED : State of CA-Certified Design Approval Agency
 Review of these plans and/or specifications does not
 authorize or approve any deviation from requirements of
 State laws or applicable local ordinances.

P.A. # TRA- 8580 DATE ISSUED: 10/26/2022
 EXP. DATE **FEB 29, 2024**

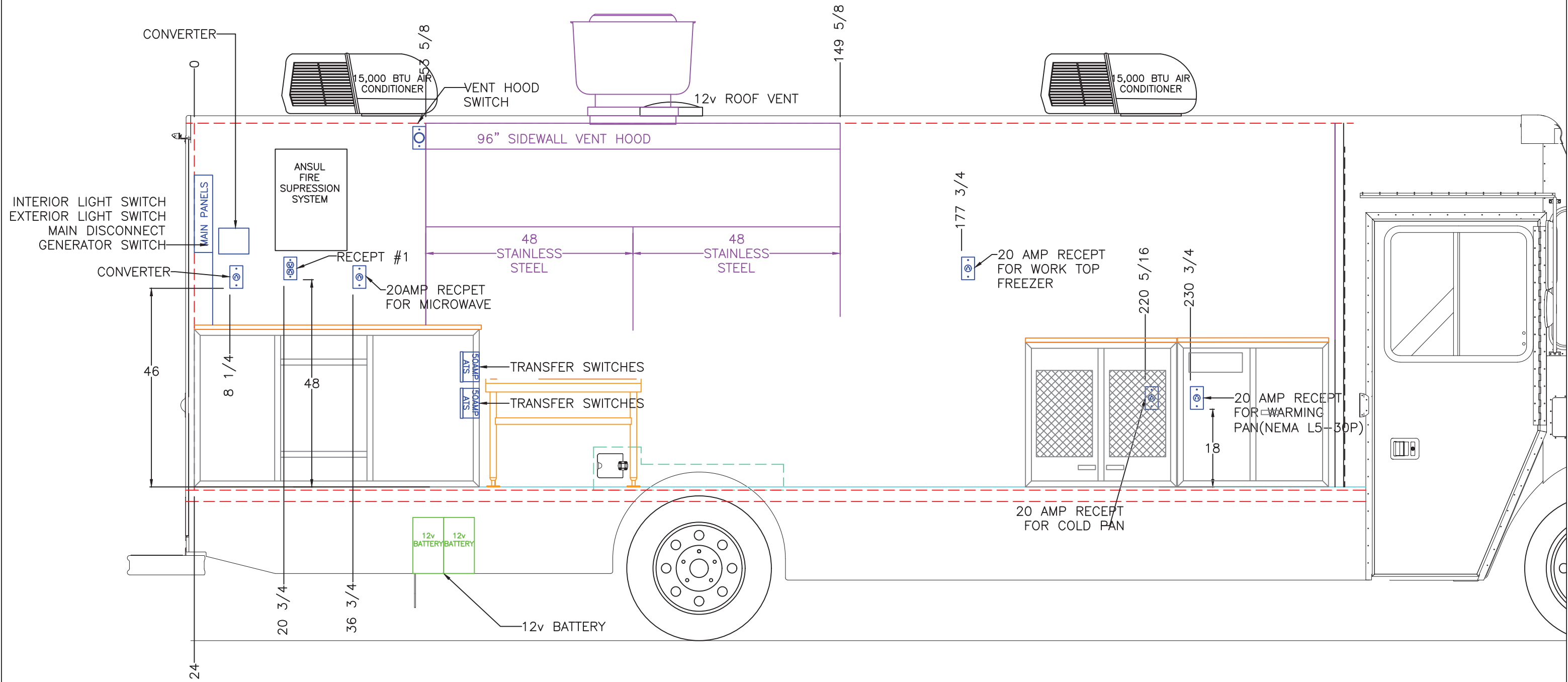
Reviewed By *Michael A. Tomko*

T.R. Arnold & Associates, Inc. Telephone (574) 264-0745
 4703 Chester Drive, Elkhart, IN 46516

CALIFORNIA

ITEM #	DCI #	MANUFACTURE #	QTY	DESCRIPTION
1	TX-1029	T-23-HC RH	1	REFER TRUE T-23 REACH-IN RH
2	TX-1080	TSS-48-12-HC	1	TRUE SANDWICH PREP TABLE 48"
3	TX-????	TC90S	1	METRO WARMING CABINET
4	TX-????	DISW-2-120	1	ADVANCED TABCO WARM PAN DROP-IN 2 PAN
5	TX-????	DIRCP-2	1	ADVANCED TABCO COLD PAN DROP-IN 2 PAN
6	TX-1067	TWT-48F	1	TRUE WORKTOP FREEZER
7	N/A	N/A	4	RECEPT #1, #2, RADIO, TV

DRAWN BY	DATE	PLOT SCALE	DESCRIPTION	DELIVERY CONCEPTS, INC.
R GRUBER	8/18/2022	N.T.S.	COMPASS-USA-SANTA ROSA HOSPITAL 22' MORGAN STEP VAN ELECTRICAL FLOORPLAN	1005 3rd STREET, OSCEOLA, IN 46561
ALL DIMENSIONS ARE IN INCHES UNLESS OTHERWISE NOTED			DRAWING TOLERANCES +/- .050 (DECIMAL) +/- 1/16 (FRACTIONAL)	BOM NO. XXXXXXXX
THIS DRAWING AND THE INFORMATION CONTAINED WITHIN ARE THE EXCLUSIVE PROPERTY OF DELIVERY CONCEPTS, INC. IT SHALL NOT BE DUPLICATED WITHOUT WRITTEN CONSENT OF DCI			SERIES MK	DWG. NO. MK00164
			SHEET 8 OF 16	



APPROVED : State of CA-Certified Design Approval Agency
 Review of these plans and/or specifications does not
 authorize or approve any deviation from requirements of
 State laws or applicable local ordinances.

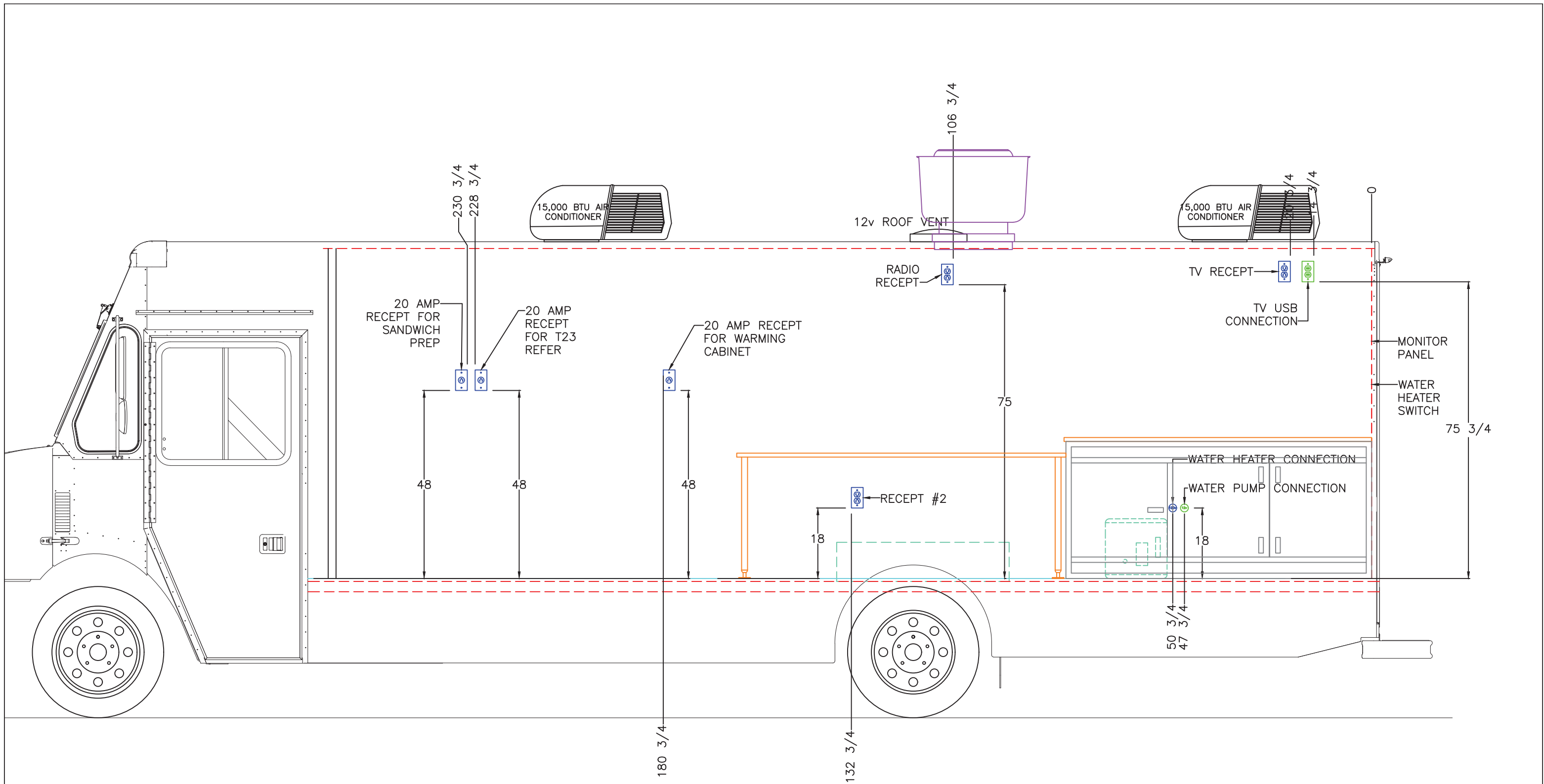
P.A. # TRA- 8580 DATE
 ISSUED: 10/26/2022
 EXP.
 DATE **FEB 29, 2024**

Reviewed By Michael D. Fonks

T.R. Arnold & Associates, Inc. Telephone (574) 264-0745
 4703 Chester Drive, Elkhart, IN 46516

CALIFORNIA

DRAWN BY R GRUBER	DATE 8/18/2022	PLOT SCALE N.T.S.	DESCRIPTION COMPASS-USA-SANTA ROSA HOSPITAL 22' MORGAN STEP VAN ROADSIDE ELECTRICAL	DELIVERY CONCEPTS, INC. 1005 3rd STREET, OSCEOLA, IN 46561
ALL DIMENSIONS ARE IN INCHES UNLESS OTHERWISE NOTED			DRAWING TOLERANCES +/- .050 (DECIMAL) +/- 1/16 (FRACTIONAL)	BOM NO. XXXXXXXX
THIS DRAWING AND THE INFORMATION CONTAINED WITHIN ARE THE EXCLUSIVE PROPERTY OF DELIVERY CONCEPTS, INC. IT SHALL NOT BE DUPLICATED WITHOUT WRITTEN CONSENT OF DCI			SERIES MK	DWG. NO. MK00164
		SHEET 9	OF 16	



APPROVED : State of CA-Certified Design Approval Agency
 Review of these plans and/or specifications does not
 authorize or approve any deviation from requirements of
 State laws or applicable local ordinances.

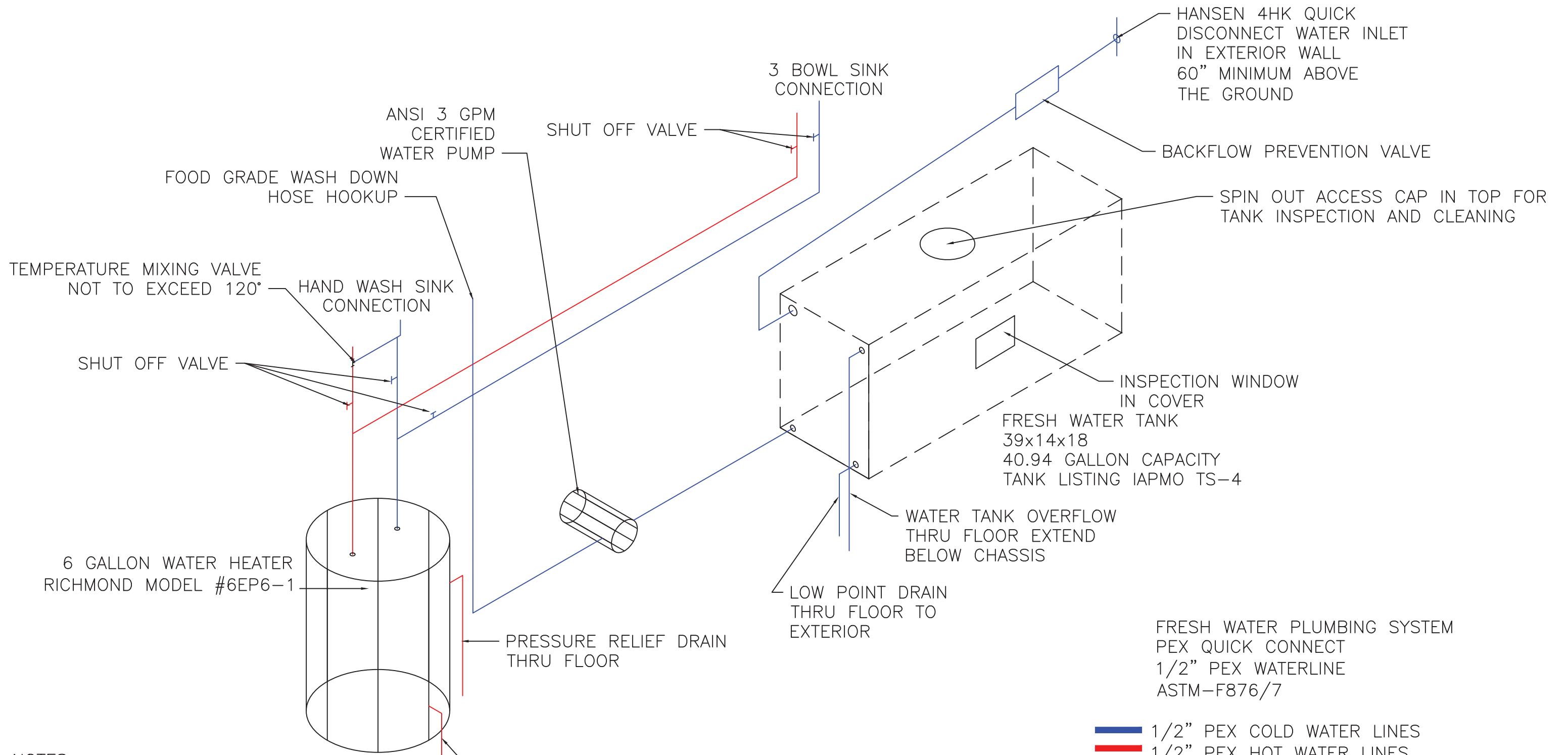
P.A. # TRA- 8580 DATE
 EXP. ISSUED: 10/26/2022
 DATE **FEB 29, 2024**

Reviewed By *Michael A. Jonko*

T.R. Arnold & Associates, Inc. Telephone (574) 264-0745
 4703 Chester Drive, Elkhart, IN 46516

CALIFORNIA

DRAWN BY R GRUBER	DATE 8/18/2022	PLOT SCALE N.T.S.	DESCRIPTION COMPASS-USA-SANTA ROSA HOSPITAL 22' MORGAN STEP VAN CURBSIDE ELETRICAL	DELIVERY CONCEPTS, INC. 1005 3rd STREET, OSCEOLA, IN 46561
ALL DIMENSIONS ARE IN INCHES UNLESS OTHERWISE NOTED			DRAWING TOLERANCES +/- .050 (DECIMAL) +/- 1/16 (FRACTIONAL)	BOM NO. XXXXXXXX
THIS DRAWING AND THE INFORMATION CONTAINED WITHIN ARE THE EXCLUSIVE PROPERTY OF DELIVERY CONCEPTS, INC. IT SHALL NOT BE DUPLICATED WITHOUT WRITTEN CONSENT OF DCI			SERIES MK	DWG. NO. MK00164
		SHEET 10	OF 16	



- NOTES:
- 1) WATER TANK WILL BE COVERED WITH ALUMINUM COVER ON ALL SIDES TO PROTECT TANK. ACCESS DOOR ON TOP AND SIDE
 - 2) THE POTABLE WATER TANK SHALL BE PROTECTED FROM CONTAMINATION+
 - 3) TANK SHALL BE STRAPPED TO FLOOR OF UNIT
 - 4) MINIMUM OF 1 GPM WATER PRESSURE @ SINK FAUCETS
 - 5) WATER TANK IS REMOVABLE WITHOUT REMOVING PERMANENT STRUCTURES

APPROVED : State of CA-Certified Design Approval Agency
 Review of these plans and/or specifications does not authorize or approve any deviation from requirements of State laws or applicable local ordinances.

P.A. # **TRA-8580** DATE ISSUED: 10/26/2022

EXP. DATE **FEB 29, 2024**

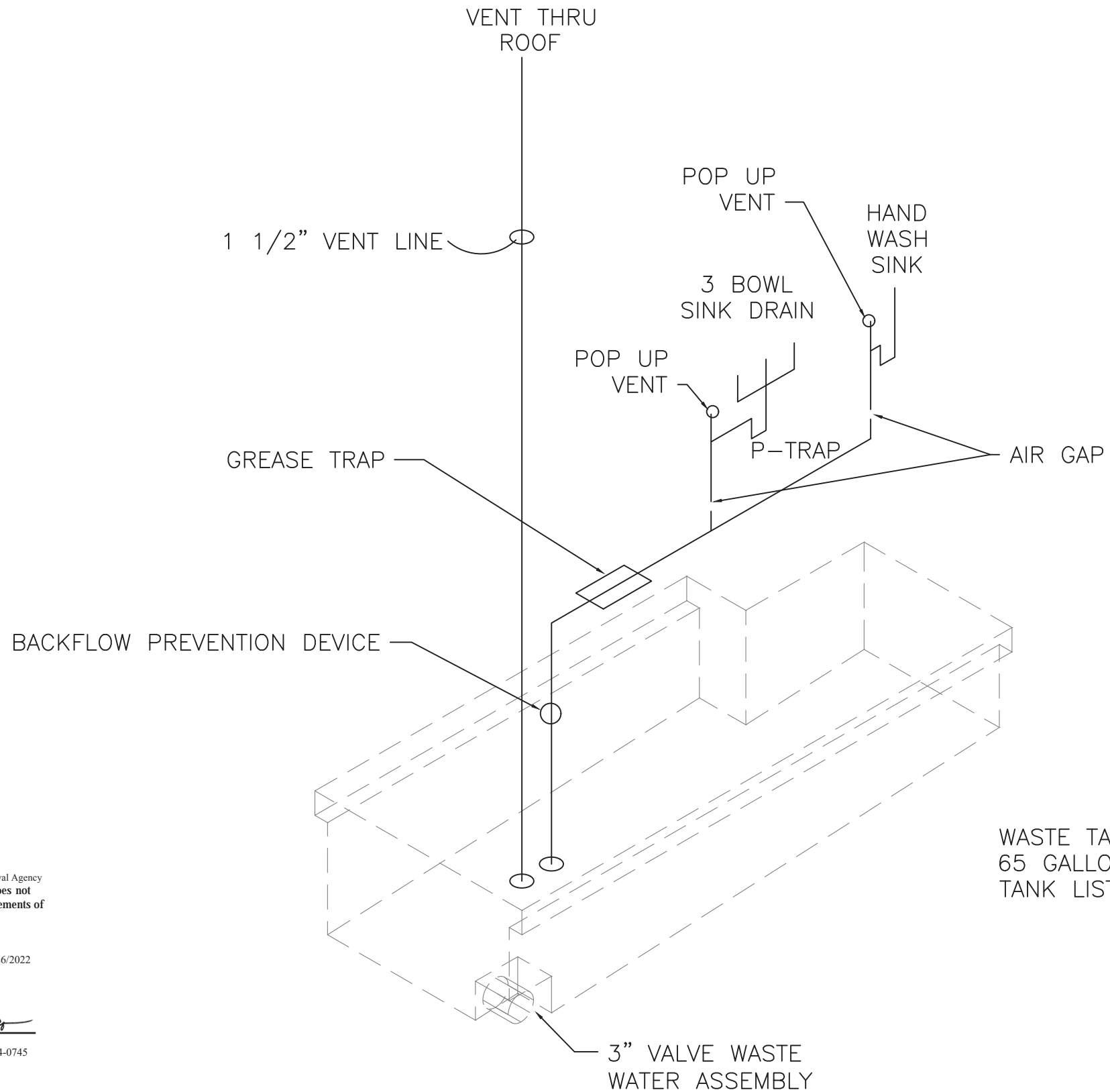
Reviewed By *Michael A. Jones*

T.R. Arnold & Associates, Inc. Telephone (574) 264-0745
 4703 Chester Drive, Elkhart, IN 46516

1/2" PEX COLD WATER LINES
1/2" PEX HOT WATER LINES

CALIFORNIA

DRAWN BY R GRUBER	DATE 8/18/2022	PLOT SCALE N.T.S.	DESCRIPTION FRESH WATER PLUMBING LAYOUT	DELIVERY CONCEPTS, INC. 1005 3rd STREET, OSCEOLA, IN 46561
ALL DIMENSIONS ARE IN INCHES UNLESS OTHERWISE NOTED			DRAWING TOLERANCES +/- .050 (DECIMAL) +/- 1/16 (FRACTIONAL)	BOM NO. XXXXXXXX
THIS DRAWING AND THE INFORMATION CONTAINED WITHIN ARE THE EXCLUSIVE PROPERTY OF DELIVERY CONCEPTS, INC. IT SHALL NOT BE DUPLICATED WITHOUT WRITTEN CONSENT OF DCI			SERIES MK	DWG. NO. P01250
		SHEET 11	OF 16	



WASTE TANK 24.5" W x 14" H x 58" L
 65 GALLON CAPACITY
 TANK LISTING IAPMO TS-2

CALIFORNIA

APPROVED : State of CA-Certified Design Approval Agency
 Review of these plans and/or specifications does not
 authorize or approve any deviation from requirements of
 State laws or applicable local ordinances.

P.A. # **TRA-8580** DATE ISSUED: 10/26/2022
 EXP. DATE **FEB 29, 2024**

Reviewed By *Michael A. Tonks*

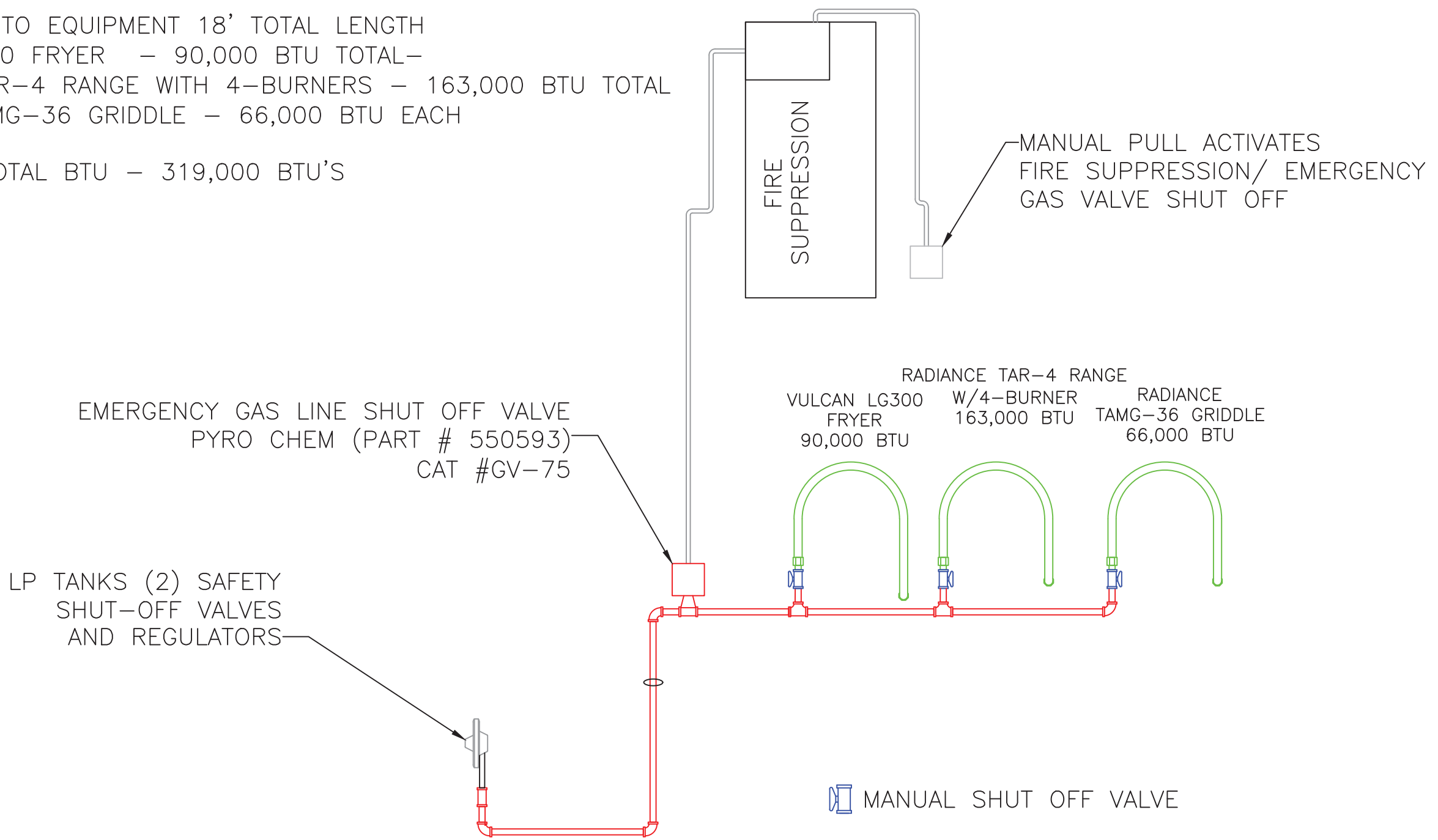
T.R. Arnold & Associates, Inc. Telephone (574) 264-0745
 4703 Chester Drive, Elkhart, IN 46516

NOTES:

- 1) ALL PIPING IS 1 1/2" PVC NSF STANDARD 14 UNLESS NOTED.
- 2) HOLDING TANK IS REMOVABLE WITHOUT REMOVING PERMANENT STRUCTURE.

DRAWN BY R GRUBER	DATE 8/18/2022	PLOT SCALE N.T.S.	DESCRIPTION WASTE PLUMBING LAYOUT	DELIVERY CONCEPTS, INC. 1005 3rd STREET, OSCEOLA, IN 46561
ALL DIMENSIONS ARE IN INCHES UNLESS OTHERWISE NOTED			DRAWING TOLERANCES +/- .050 (DECIMAL) +/- 1/16 (FRACTIONAL)	BOM NO. XXXXXXXX
THIS DRAWING AND THE INFORMATION CONTAINED WITHIN ARE THE EXCLUSIVE PROPERTY OF DELIVERY CONCEPTS, INC. IT SHALL NOT BE DUPLICATED WITHOUT WRITTEN CONSENT OF DCI			SERIES MK	DWG. NO. P01251
		SHEET 12	OF 16	

3/4" BLACK PIPE TO EQUIPMENT 18' TOTAL LENGTH
 (1) VULCAN LG300 FRYER - 90,000 BTU TOTAL-
 (1) RADIANCE TAR-4 RANGE WITH 4-BURNERS - 163,000 BTU TOTAL
 (1) RADIANCE TAMG-36 GRIDDLE - 66,000 BTU EACH
 TOTAL BTU - 319,000 BTU'S



MANUAL SHUT OFF VALVE

CALIFORNIA

APPROVED : State of CA-Certified Design Approval Agency
 Review of these plans and/or specifications does not
 authorize or approve any deviation from requirements of
 State laws or applicable local ordinances.

P.A. # TRA- 8580 DATE
 EXP. FEB 29, 2024
 DATE ISSUED: 10/26/2022

Reviewed By *Michael A. Tomko*

T.R. Arnold & Associates, Inc. Telephone (574) 264-0745
 4703 Chester Drive, Elkhart, IN 46516

DRAWN BY R GRUBER	DATE 8/18/2022	PLOT SCALE N.T.S.	DESCRIPTION LPG LAYOUT LAYOUT	DELIVERY CONCEPTS, INC. 1005 3rd STREET, OSCEOLA, IN 46561
ALL DIMENSIONS ARE IN INCHES UNLESS OTHERWISE NOTED	DRAWING TOLERANCES +/- .050 (DECIMAL) +/- 1/16 (FRACTIONAL)	SERIES MK	SHEET 13	OF 16
THIS DRAWING AND THE INFORMATION CONTAINED WITHIN ARE THE EXCLUSIVE PROPERTY OF DELIVERY CONCEPTS, INC. IT SHALL NOT BE DUPLICATED WITHOUT WRITTEN CONSENT OF DCI			DWG. NO. P01251	XXXXXXXX

DATA SHEET

R-102 Restaurant Fire Suppression Systems

Features

- n Low pH Agent
- n Proven Design
- n Reliable Gas Cartridge Operation
- n Aesthetically Appealing
- n UL Listed – Meets Requirements of UL 300
- n ULC Listed – Meets Requirements of ULC/ORD-C1254.6
- n CE Marked

Application

The ANSUL® R-102 Restaurant Fire Suppression System is an automatic, pre-engineered, fire suppression system designed to protect areas associated with ventilating equipment including hoods, ducts, plenums, and filters. The system also protects auxiliary grease extraction equipment and cooking equipment such as fryers; griddles and range tops; upright, natural charcoal, or chain-type broilers; electric, lava rock, mesquite, or gas-radiant char-broilers; and woks.

The system is ideally suitable for use in restaurants, hospitals, nursing homes, hotels, schools, airports, and other similar facilities.

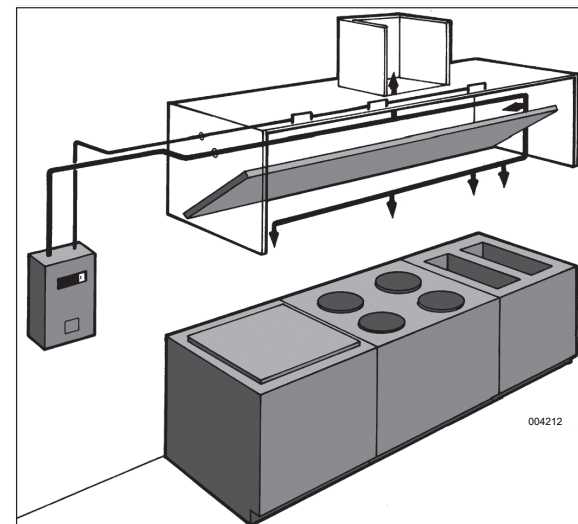
Use of the R-102 system is limited to indoor applications or locations that provide weatherproof protection within tested temperature limitations. The regulated release and tank assemblies must be mounted in an area where the air temperature will not fall below 32 °F (0 °C) or exceed 130 °F (54 °C). The system must be designed and installed within the guidelines of the UL/ULC Listed Design, Installation, Recharge, and Maintenance Manual.

System Description

The restaurant fire suppression system is a pre-engineered, wet chemical, cartridge-operated, regulated pressure type with a fixed nozzle agent distribution network. It is listed with Underwriters Laboratories (UL/ULC).



004215



004212

The system is capable of automatic detection and actuation as well as remote manual actuation. Additional equipment is available for building fire alarm panel connections, electrical shut-down and/or interface, and mechanical or electrical gas line shut-off applications.

The detection portion of the fire suppression system allows for automatic detection by means of specific temperature-rated alloy type fusible links, which separate when the temperature exceeds the rating of the link, allowing the regulated release to actuate.

A system owner's guide is available containing basic information pertaining to system operation and maintenance. A detailed technical manual, including system description, design, installation, recharge and resetting instructions, and maintenance procedures, is available to qualified individuals.

The system is installed and serviced by authorized distributors that are trained by the manufacturer.

The basic system consists of an AUTOMAN regulated release assembly which includes a regulated release mechanism and a wet chemical storage tank housed within a single enclosure. Nozzles with blow-off caps, detectors, cartridges, agent, and pulley elbows are supplied in separate packages in the quantities needed for fire suppression system arrangements.

Additional equipment includes a remote manual pull station(s), mechanical and electrical gas valves, and electrical switches for automatic equipment and gas line shut-off. Accessories can be added such as alarms, warning lights, etc., to installations where required.

Additional tanks and corresponding equipment can be used in multiple arrangements to allow for larger hazard coverage. Each tank is limited to a listed maximum amount of flow numbers.

Component Description

Wet Chemical Agent – The extinguishing agent is a mixture of organic salts designed for rapid flame knockdown and foam securement of grease related fires. It is available in plastic containers with instructions for wet chemical handling and usage.

Agent Tank – The agent tank is installed in a stainless steel enclosure or wall bracket. The tank is constructed of stainless steel.

Tanks are available in two sizes: 1.5 gallon (5.7 L) and 3.0 gallon (11.4 L). The tanks have a working pressure of 110 psi (7.6 bar), a test pressure of 330 psi (22.8 bar), and a minimum burst pressure of 660 psi (45.5 bar).

The tank includes an adaptor/tube assembly. The adaptor assembly includes a chrome-plated steel adaptor with a 1/4 in. NPT female gas inlet, a 3/8 in. NPT female agent outlet, and a stainless steel agent pick-up tube. The adaptor also contains a bursting disc seal which helps to prevent the siphoning of agent up the pipe during extreme temperature variations.

Regulated Release Mechanism – The regulated release mechanism is a spring-loaded, mechanical/pneumatic type capable of providing the expellant gas supply to one, two, or three agent tanks depending on the capacity of the gas cartridge used. It contains a factory installed regulator deadset at 110 psi (7.6 bar) with an external relief of approximately 180 psi (12.4 bar). It has automatic actuation capabilities by a fusible link detection system and remote manual actuation by a mechanical pull station.

The regulated release mechanism contains a release assembly, regulator, expellant gas hose, and agent storage tank housed in a stainless steel enclosure with cover. The enclosure contains knock-outs for 1/2 in. conduit. The cover contains an opening for a visual status indicator.

It is compatible with mechanical gas shut-off devices; or, when equipped with a field or factory-installed switch and manual reset relay, it is compatible with electric gas line or appliance shut-off devices.

Regulated Actuator Assembly – When more than two agent tanks (or three 3.0 gallon (11.4 L) tanks in certain applications) are required, the regulated actuator is available to provide expellant gas for additional tanks. It is connected to the cartridge receiver outlet of the regulated release mechanism providing simultaneous agent discharge. It contains a regulator deadset at 110 psi (7.6 bar) with an external relief of approximately 180 psi (12.4 bar). It has automatic actuation capabilities using pressure from the regulated release mechanism cartridge.

The regulated actuator assembly contains an actuator, regulator, expellant gas hose, and agent tank housed in a stainless steel enclosure with cover. The enclosure contains knockouts to permit installation of the expellant gas line.



009368

Discharge Nozzles – Each discharge nozzle is tested and listed with the R-102 system for a specific application. Nozzle tips are stamped with the flow number designation (1/2, 1, 2, or 3). Each nozzle must have a metal or rubber blow-off cap to keep the nozzle tip orifice free of cooking grease build-up.

Agent Distribution Hose – Kitchen appliances manufactured with or resting on casters (wheels/rollers) may include an agent distribution hose as a component of the suppression system. This allows the appliance to be moved for cleaning purposes without disconnecting the appliance fire suppression protection. The hose assembly includes a restraining cable kit to limit the appliance movement within the range (length) of the flexible hose.

Flexible Conduit – Flexible conduit allows for quicker installations and the convenience of being able to route the cable over, under and around obstacles. Flexible conduit can be used as a substitute for standard EMT conduit or can be used with EMT conduit. Flexible conduit can be used only with the Molded Remote Manual Pull Station and with the Mechanical Gas Valve Assembly.

Pull Station Assembly – The remote manual pull station is made out of a molded red composite material. The red color makes the pull station more readily identifiable as the manual means for fire suppression system operation. The pull station is compatible with the ANSUL Flexible Conduit and with 1/2 in. EMT conduit.

Approvals

- UL/ULC Listed
- CE Marked
- New York City Department of Buildings — COA #5663
- LPCB
- TFRI
- Marine Equipment Directive (MED)
- DNV
- ABS
- Lloyd's Register
- Meets requirements of NFPA 96 (Standard for the Installation of Equipment for the Removal of Smoke and Grease-Laden Vapors from Commercial Cooking Equipment)
- Meets requirements of NFPA 17A (Standard on Wet Chemical Extinguishing Systems)

APPROVED: State of CA-Certified Design Approval Agency
Review of these plans and/or specifications does not authorize or approve any deviation from requirements of State laws or applicable local ordinances.

P.A. # TRA-8580 DATE
ISSUED: 10/26/2022
EXP. DATE
DATE FEB 29, 2024

Reviewed By: *Michel A. Fomb*

T.R. Arnold & Associates, Inc. Telephone (574) 264-0745
4703 Chester Drive, Elkhart, IN 46516

One Stanton Street | Marinette, WI 54143-2542, USA | +1-715-735-7411 | www.ansul.com
© 2017 Johnson Controls. All rights reserved. All specifications and other information shown were current as of document revision date and are subject to change without notice. | Form No. F-2004004-09



CALIFORNIA

DRAWN BY R GRUBER	DATE 8/18/2022	PLOT SCALE N.T.S.	DESCRIPTION COMPASS-USA-SANTA ROSA HOSPITAL 22' MORGAN STEP VAN FIRE SUPPRESSION	DELIVERY CONCEPTS, INC. 1005 3rd STREET, OSCEOLA, IN 46561
ALL DIMENSIONS ARE IN INCHES UNLESS OTHERWISE NOTED	DRAWING TOLERANCES +/- .050 (DECIMAL) +/- 1/16 (FRACTIONAL)		SERIES MK	BOM NO. XXXXXXXX
THIS DRAWING AND THE INFORMATION CONTAINED WITHIN ARE THE EXCLUSIVE PROPERTY OF DELIVERY CONCEPTS, INC. IT SHALL NOT BE DUPLICATED WITHOUT WRITTEN CONSENT OF DCI			SHEET OF 14 16	DWG. NO. MK00164

Ordering Information

Order all system components through your local authorized ANSUL Distributor.

Specifications

An ANSUL R-102 Fire Suppression System shall be furnished. The system shall be capable of protecting all hazard areas associated with cooking equipment.

1.0 GENERAL

1.1 References

- 1.1.1 Underwriters Laboratories (UL)
 - 1.1.1.1 UL Standard 1254
 - 1.1.1.2 UL Standard 300
- 1.1.2 Underwriters Laboratories of Canada (ULC)
 - 1.1.2.1 ULC/ORD-C 1254.6
- 1.1.3 National Fire Protection Association (NFPA)
 - 1.1.3.1 NFPA 96
 - 1.1.3.2 NFPA 17A

1.2 Submittals

- 1.2.1 Submit two sets of manufacturer's data sheets
- 1.2.2 Submit two sets of piping design drawings

1.3 System Description

- 1.3.1 The system shall be an automatic fire suppression system using a wet chemical agent for cooking grease related fires.
- 1.3.2 The system shall be capable of suppressing fires in the areas associated with ventilating equipment including hoods, ducts, plenums, and filters as well as auxiliary grease extraction equipment. The system shall also be capable of suppressing fires in areas associated with cooking equipment, such as fryers; griddles and range tops; upright, natural charcoal, or chain-type broilers; electric, lava rock, mesquite or gas-radiant char-broilers; and woks.
- 1.3.3 The system shall be the pre-engineered type having minimum and maximum guidelines established by the manufacturer and listed by Underwriters Laboratories (UL/ULC).
- 1.3.4 The system shall be installed and serviced by personnel trained by the manufacturer.
- 1.3.5 The system shall be capable of protecting cooking appliances by utilizing either dedicated appliance protection and/or overlapping appliance protection.

1.4 Quality Control

- 1.4.1 Manufacturer: The R-102 Restaurant Fire Suppression System shall be manufactured by a company with at least forty years experience in the design and manufacture of pre-engineered fire suppression systems. The manufacturer shall be ISO 9001 registered.
- 1.4.2 Certificates: The wet agent shall be a specially formulated, aqueous solution of organic salts with a pH range between 7.7 – 8.7, designed for flame knockdown and foam securement of grease-related fires.

1.5 Warranty, Disclaimer, and Limitations

- 1.5.1 The pre-engineered restaurant fire suppression system components shall be warranted for five years from date of delivery against defects in workmanship and material.

1.6 Delivery

- 1.6.1 Packaging: All system components shall be securely packaged to provide protection during shipment.

1.7 Environmental Conditions

- 1.7.1 The R-102 system shall be capable of operating within a temperature range of 32 °F to 130 °F (0 °C to 54 °C).

2.0 PRODUCT

2.1 Manufacturer

- 2.1.1 Johnson Controls, One Stanton Street, Marinette, Wisconsin 54143-2542, Telephone (715) 735-7411.

2.2 Components

- 2.2.1 The basic system shall consist of an AUTOMAN regulated release assembly which includes a regulated release mechanism and a wet chemical storage tank housed within a single enclosure. Nozzles, blow-off caps, detectors, cartridges, agent, fusible links, and pulley elbows shall be supplied in separate packages in the quantities needed for fire suppression system arrangements. Additional equipment shall include remote manual pull station, mechanical and electrical gas valves, and electrical switches for automatic equipment and gas line shut-off, and building fire alarm control panel interface.
- 2.2.2 Wet Chemical Agent: The extinguishing agent shall be a specially formulated, aqueous solution of organic salts with a pH range between 7.7 – 8.7, designed for flame knockdown and foam securement of grease related fires.
- 2.2.3 Agent Tank: The agent tank shall be installed in a stainless steel enclosure or wall bracket. The tank shall be constructed of stainless steel. Tanks shall be available in two sizes; 1.5 gallon (5.7 L) and 3.0 gal (11.4 L). The tank shall have a working pressure of 110 psi (7.6 bar), a test pressure of 330 psi (22.8 bar), and a minimum burst pressure of 660 psi (45.5 bar). The tank shall include an adaptor/tube assembly containing a burst disc union.

Specifications (Continued)

- 2.2.4 Regulated Release Mechanism: The regulated release mechanism shall be a spring-loaded, mechanical/pneumatic type capable of providing the expellant gas supply to one or two agent tanks depending on the capacity of the gas cartridge used or three 3.0 gallon (11.4 L) agent storage tanks in certain applications. It shall contain a factory installed regulator deadset at 110 psi (7.6 bar) with an external relief of approximately 180 psi (12.4 bar).

It shall have the following actuation capabilities: auto-matic actuation by a fusible link detection system and remote manual actuation by a mechanical pull station.

The regulated release mechanism shall contain a release assembly, regulator, expellant gas hose, and agent storage tank housed in a stainless steel enclosure with cover. The enclosure shall contain knock-outs for 1/2 in. conduit. The cover shall contain an opening for a visual status indicator.

It shall be compatible with mechanical gas shut-off devices; or, when equipped with a field or factory-installed switch(es), it shall be compatible with electric gas line or appliance shut-off devices, or connections to a building fire alarm control panel.

- 2.2.5 Regulated Actuator Assembly: When more than two agent tanks or three agent tanks in certain applications are required, the regulated actuator shall be available to provide expellant gas for additional tanks. It shall be connected to the cartridge receiver outlet of the regulated release mechanism providing simultaneous agent discharge. The regulator shall be deadset at 110 psi (7.6 bar) with an external relief of approximately 180 psi (12.4 bar). The regulated actuator assembly shall contain an actuator, regulator, expellant gas hose, and agent tank housed in a stainless steel enclosure with cover. The enclosure shall contain knockouts to permit installation of the expellant gas line.

- 2.2.6 Discharge Nozzles: Each discharge nozzle shall be tested and listed with the R-102 system for a specific application. Nozzles tips shall be stamped with the flow number designation (1/2, 1, 2, or 3). Each nozzle shall have a metal or rubber blow-off cap to keep the nozzle tip orifice free of cooking grease build-up.

- 2.2.7 Distribution Piping: Distribution piping shall be Schedule 40 black iron, chrome-plated, or stainless steel conforming to ASTM A120, A53, or A106.

- 2.2.8 Detectors: The detectors shall be the fusible link style designed to separate at a specific temperature, or shall be electric thermal detectors designed to operate at a factory preset temperature.

- 2.2.9 Cartridges: The cartridge shall be a sealed steel pressure vessel containing either carbon dioxide or nitrogen gas. The cartridge seal shall be designed to be punctured by the releasing device supplying the required pressure to expel wet chemical agent from the storage tank.

- 2.2.10 Agent Distribution Hose: An optional agent distribution hose shall be available for kitchen appliances manufactured with or resting on casters (wheels/rollers). This shall allow the appliance to be moved for cleaning purposes without disconnecting the appliance fire suppression protection. Hose assembly shall include a restraining cable kit to limit the appliance movement within the range (length) of the flexible hose.

- 2.2.11 Flexible Conduit: The manufacturer supplying the Restaurant Fire Suppression System shall offer flexible conduit as an option to rigid EMT conduit for the installation of pull stations and/or mechanical gas valves. The flexible conduit shall be UL Listed and include all approved components for proper installation.

- 2.2.12 Pull Station Assembly: The Fire Suppression System shall include a remote pull station for manual system actuation. The pull station shall be designed to include a built-in guard to protect the pull handle. The pull station shall also be designed with a pull handle to allow for three finger operation and shall be red in color for quick visibility.

3.0 IMPLEMENTATION

3.1 Installation

- 3.1.1 The R-102 fire suppression system shall be designed, installed, inspected, maintained, and recharged in accordance with the manufacturer's listed instruction manual.

3.2 Training

- 3.2.1 Training shall be conducted by representatives of the manufacturer.

Note: The converted values in this document are for dimensional reference only and do not reflect an actual measurement.

ANSUL, R-102, and the product names listed in this material are marks and/or registered marks. Unauthorized use is strictly prohibited.

APPROVED : State of CA-Certified Design Approval Agency
Review of these plans and/or specifications does not authorize or approve any deviation from requirements of State laws or applicable local ordinances.

P.A. # **TRA-8580** DATE ISSUED: 10/26/2022

EXP. DATE **FEB 29, 2024**

Reviewed By *Michael A. Jones*

T.R. Arnold & Associates, Inc. Telephone (574) 264-0745
4703 Chester Drive, Elkhart, IN 46516

CALIFORNIA

DRAWN BY R GRUBER	DATE 8/18/2022	PLOT SCALE N.T.S.	DESCRIPTION COMPASS-USA-SANTA ROSA HOSPITAL 22' MORGAN STEP VAN FIRE SUPPRESSION	DELIVERY CONCEPTS, INC. 1005 3rd STREET, OSCEOLA, IN 46561
ALL DIMENSIONS ARE IN INCHES UNLESS OTHERWISE NOTED			DRAWING TOLERANCES +/- .050 (DECIMAL) +/- 1/16 (FRACTIONAL)	BOM NO. XXXXXXXX
THIS DRAWING AND THE INFORMATION CONTAINED WITHIN ARE THE EXCLUSIVE PROPERTY OF DELIVERY CONCEPTS, INC. IT SHALL NOT BE DUPLICATED WITHOUT WRITTEN CONSENT OF DCI			SERIES MK	DWG. NO. MK00164
			SHEET OF 15 16	

AIR CONDITIONER x 2	
15,000 BTU	CFM HIGH/LOW 325/250

ROOFTOP VENT FAN		
PERFORMANCE	CFM	AMPS
HIGH	920	3
MEDIUM	653	2.29
LOW	478	1.86

EXHAUST HOOD	
CFM @ -0.415 in. SP	1356

CFM FROM COOKING	1356
CFM FOR AIR CHANGES	259
TOTAL CFM REQUIRED	1615
MIN CFM FROM A/C & VENTS	978
MAX CFM FROM A/C & VENTS	1570

APPROVED : State of CA-Certified Design Approval Agency
Review of these plans and/or specifications does not
authorize or approve any deviation from requirements of
State laws or applicable local ordinances.

P.A. # TRA- 8580 DATE
ISSUED: 10/26/2022

EXP.
DATE **FEB 29, 2024**

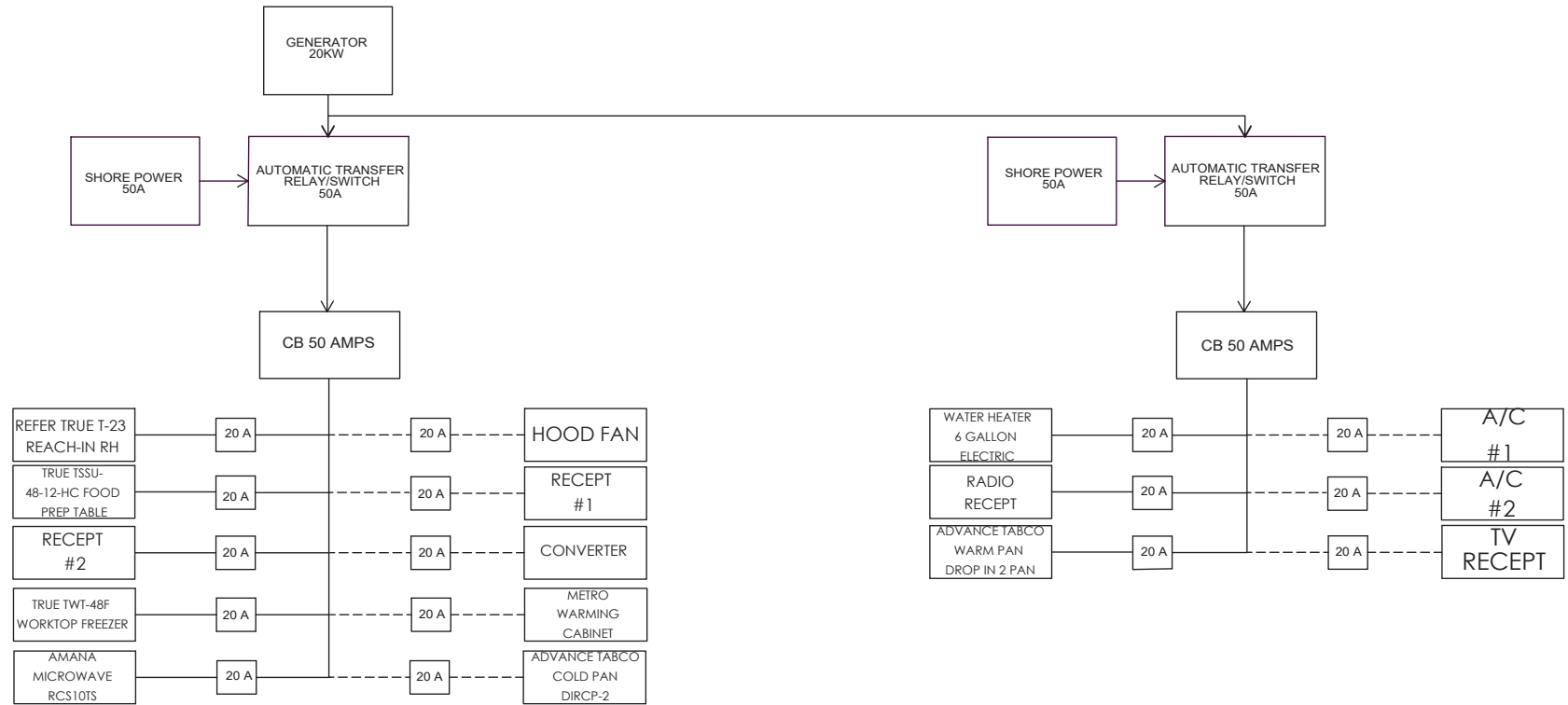
Reviewed By Michael A. Fonks

T.R. Arnold & Associates, Inc. Telephone (574) 264-0745
4703 Chester Drive, Elkhart, IN 46516

CALIFORNIA

DRAWN BY R GRUBER	DATE 8/18/2022	PLOT SCALE N.T.S.	DESCRIPTION COMPASS-USA-SANTA ROSA HOSPITAL 22' MORGAN STEP VAN AIR RETURN	DELIVERY CONCEPTS, INC. 1005 3rd STREET, OSCEOLA, IN 46561
ALL DIMENSIONS ARE IN INCHES UNLESS OTHERWISE NOTED	DRAWING TOLERANCES +/- .050 (DECIMAL) +/- 1/16 (FRACTIONAL)			BOM NO. XXXXXXXX
THIS DRAWING AND THE INFORMATION CONTAINED WITHIN ARE THE EXCLUSIVE PROPERTY OF DELIVERY CONCEPTS, INC. IT SHALL NOT BE DUPLICATED WITHOUT WRITTEN CONSENT OF DCI			SERIES MK	SHEET OF 16 16 DWG. NO. MK00164

BLOCK DIAGRAM AC LOADS



APPROVED : State of CA-Certified Design Approval Agency
 Review of these plans and/or specifications does not
 authorize or approve any deviation from requirements of
 State laws or applicable local ordinances.

P.A. # TRA- 8580 DATE
 ISSUED: 10/26/2022

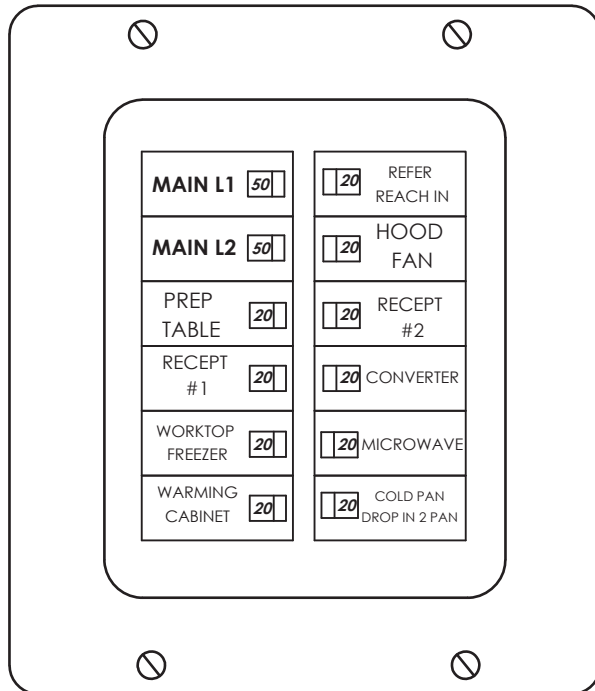
EXP. DATE **FEB 29, 2024**

Reviewed By *Michael A. Tomko*

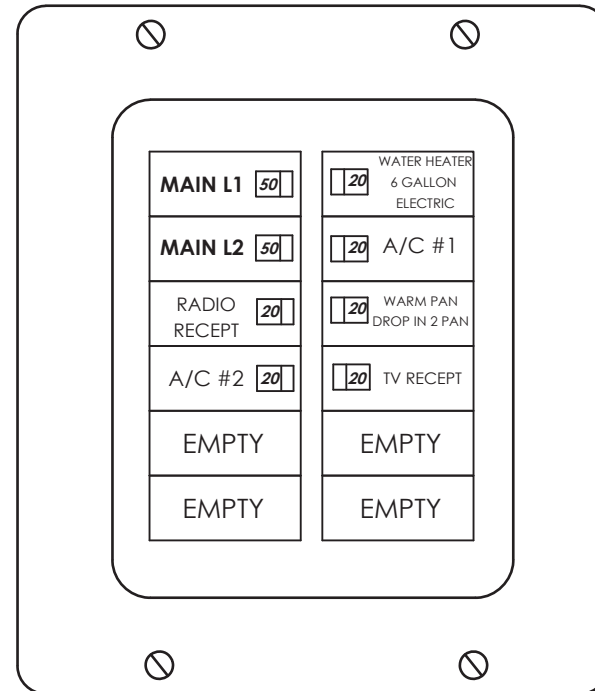
T.R. Arnold & Associates, Inc. Telephone (574) 264-0745
 4703 Chester Drive, Elkhart, IN 46516

A	8/30/2022	RELEASE FOR PRODUCTION (ECN-2680)			EAF
REV	DATE	DESCRIPTION			BY:
DELIVERY CONCEPTS, INC. 29301 C. R. 20, ELKHART, IN. 46517		DESCRIPTION		PLOT SCALE	DRAWN BY
BOM NO. MK00164		SCHEMATICS OF COMPASS-SANTA ROSA HOSPITAL		NTS	EAF
DWG. NO. S03086		SERIES MK	SHEET OF 1 5	DATE 8/30/2022	STATUS ACTIVE
<small>ALL DIMENSIONS ARE IN INCHES, UNLESS NOTED OTHERWISE</small> <small>DRAWING TOLERANCES +/- .050 (DECIMAL) +/- 1/8 (FRACTIONAL)</small> <small>THIS DRAWING AND THE INFORMATION CONTAINED WITHIN ARE THE EXCLUSIVE PROPERTY OF DELIVERY CONCEPTS, INC. IT SHALL NOT BE DUPLICATED WITHOUT WRITTEN CONSENT FROM DCI.</small>					

100A 10 SPACE LOAD CENTER #1



100A 10 SPACE LOAD CENTER #2



APPROVED : State of CA-Certified Design Approval Agency
 Review of these plans and/or specifications does not
 authorize or approve any deviation from requirements of
 State laws or applicable local ordinances.

P.A. # TRA- 8580 DATE
 ISSUED: 10/26/2022

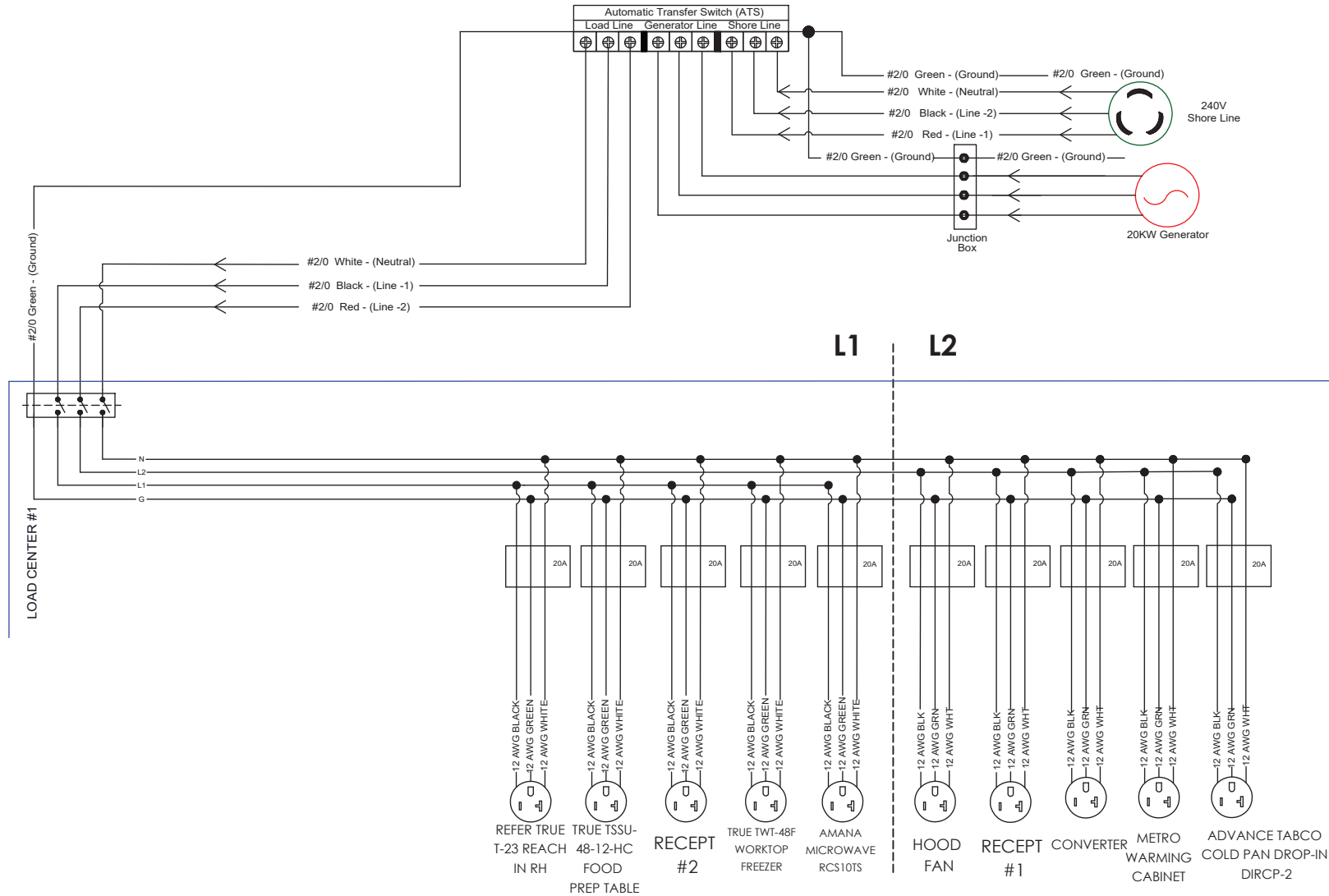
EXP. DATE
FEB 29, 2024

Reviewed By Michael A. Fonke

T.R. Arnold & Associates, Inc. Telephone (574) 264-0745
 4703 Chester Drive, Elkhart, IN 46516

A	8/30/2022	RELEASE FOR PRODUCTION			EAF
REV	DATE	DESCRIPTION			BY:
DELIVERY CONCEPTS, INC. 29301 C. R. 20, ELKHART, IN. 46517		DESCRIPTION		PLOT SCALE	DRAWN BY
BOM NO. MK00164		SCHEMATICS OF COMPASS-SANTA ROSA HOSPITAL		NTS	EAF
DWG. NO. S03086		SERIES MK	SHEET OF 2 5	DATE 8/30/2022	STATUS ACTIVE
<small>ALL DIMENSIONS ARE IN INCHES, UNLESS NOTED OTHERWISE DRAWING TOLERANCES +/- .050 (DECIMAL) +/- 1/8 (FRACTIONAL) THIS DRAWING AND THE INFORMATION CONTAINED WITHIN ARE THE EXCLUSIVE PROPERTY OF DELIVERY CONCEPTS, INC. IT SHALL NOT BE DUPLICATED WITHOUT WRITTEN CONSENT FROM DCI.</small>					

120VAC LOADS ON SHORE



APPROVED : State of CA-Certified Design Approval Agency
 Review of these plans and/or specifications does not
 authorize or approve any deviation from requirements of
 State laws or applicable local ordinances.

P.A. # TRA- **8580** DATE
 ISSUED: 10/26/2022

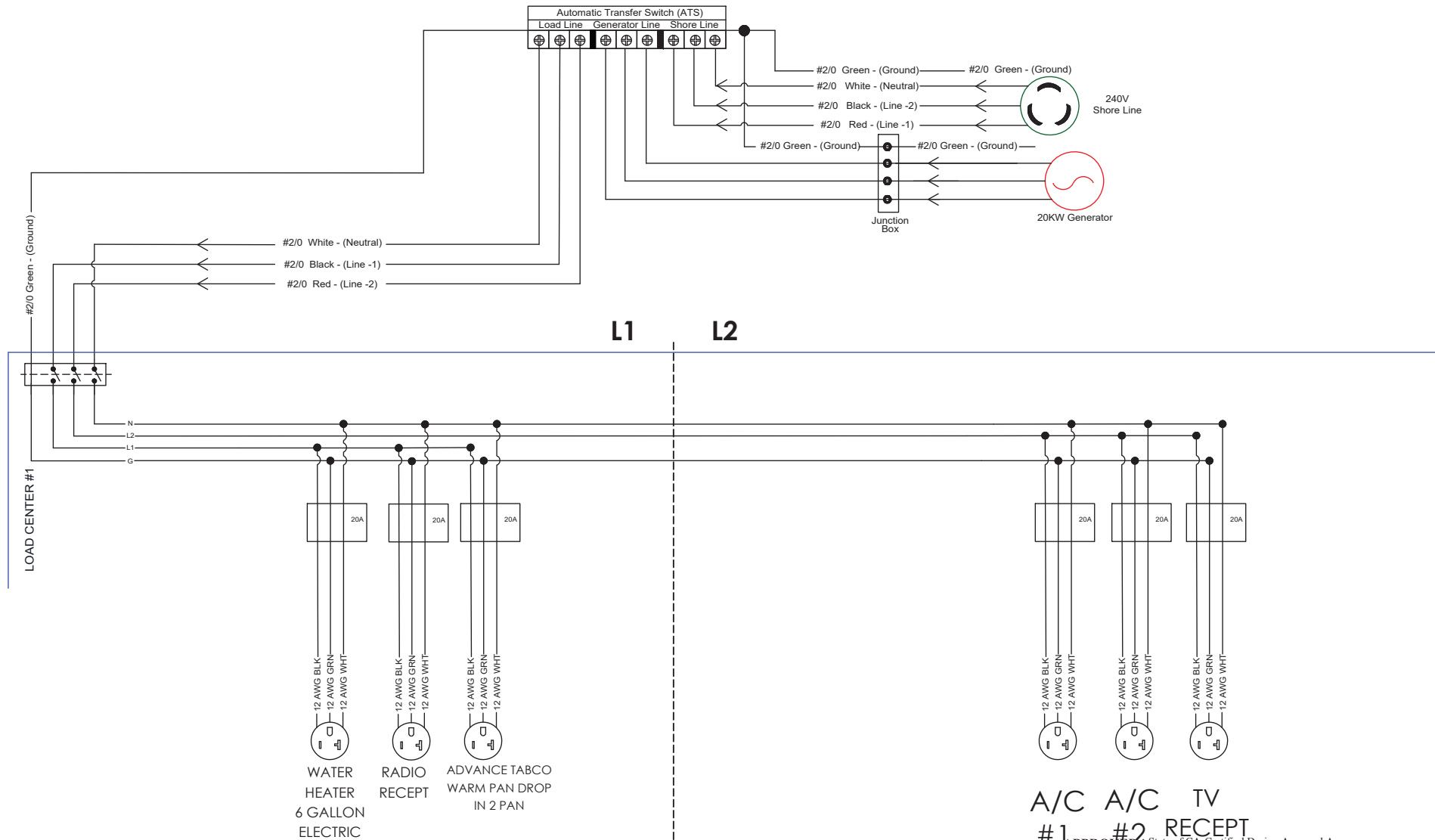
EXP. DATE **FEB 29, 2024**

Reviewed By *Michael A Tomko*

T.R. Arnold & Associates, Inc. Telephone (574) 264-0745
 4703 Chester Drive, Elkhart, IN 46516

A	8/30/2022	RELEASE FOR PRODUCTION	EAF		
REV	DATE	DESCRIPTION	BY:		
DELIVERY CONCEPTS, INC. 29301 C. R. 20, ELKHART, IN. 46517		DESCRIPTION SCHEMATICS OF COMPASS-SANTA ROSA HOSPITAL	PLOT SCALE NTS	DRAWN BY EAF	STATUS ACTIVE
BOM NO. MK00164			DATE 8/30/2022	ALL DIMENSIONS ARE IN INCHES, UNLESS NOTED OTHERWISE	DRAWING TOLERANCES +/- .050 (DECIMAL) +/- 1/8 (FRACTIONAL)
DWG. NO. S03086		SERIES MK	SHEET 3	OF 5	THIS DRAWING AND THE INFORMATION CONTAINED WITHIN ARE THE EXCLUSIVE PROPERTY OF DELIVERY CONCEPTS, INC. IT SHALL NOT BE DUPLICATED WITHOUT WRITTEN CONSENT FROM DCL.

120VAC LOADS ON SHORE



A/C A/C TV
#1 #2 RECEPT

APPROVED - State of CA-Certified Design Approval Agency
Review of these plans and/or specifications does not authorize or approve any deviation from requirements of State laws or applicable local ordinances.

P.A. # **TRA- 8580** DATE ISSUED: 10/26/2022

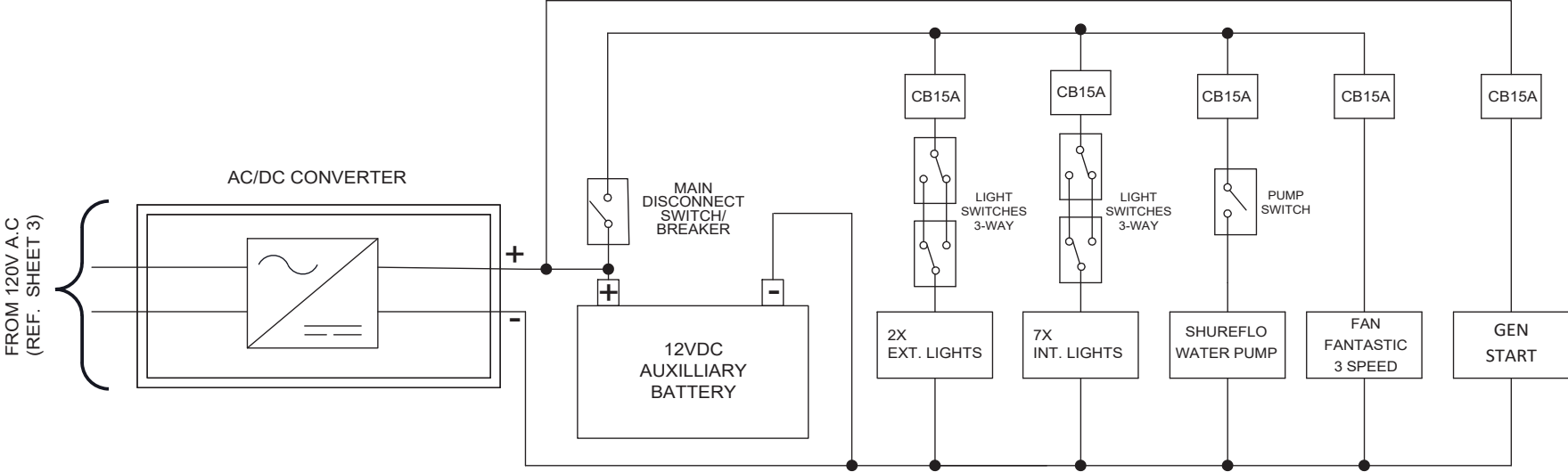
EXP. DATE **FEB 29, 2024**

Reviewed By *Michael A. Tomko*

T.R. Arnold & Associates, Inc. Telephone (574) 264-0745
4703 Chester Drive, Elkhart, IN 46516

A	8/30/2022	RELEASE FOR PRODUCTION			EAF
REV	DATE	DESCRIPTION			BY:
DELIVERY CONCEPTS, INC. 29301 C. R. 20, ELKHART, IN. 46517		DESCRIPTION SCHEMATICS OF COMPASS-SANTA ROSA HOSPITAL	PLOT SCALE NTS	DRAWN BY EAF	STATUS ACTIVE
BOM NO. MK00164			DATE 8/30/2022	ALL DIMENSIONS ARE IN INCHES, UNLESS NOTED OTHERWISE	DRAWING TOLERANCES +/- .050 (DECIMAL) +/- 1/8 (FRACTIONAL)
DWG. NO. S03086	SERIES MK	SHEET 4	OF 5	THIS DRAWING AND THE INFORMATION CONTAINED WITHIN ARE THE EXCLUSIVE PROPERTY OF DELIVERY CONCEPTS, INC. IT SHALL NOT BE DUPLICATED WITHOUT WRITTEN CONSENT FROM DCL.	

12VDC LOADS



APPROVED : State of CA-Certified Design Approval Agency
 Review of these plans and/or specifications does not
 authorize or approve any deviation from requirements of
 State laws or applicable local ordinances.

P.A. # TRA- 8580 DATE ISSUED: 10/26/2022

EXP. DATE **FEB 29, 2024**

Reviewed By Michael A. Tomko

T.R. Arnold & Associates, Inc. Telephone (574) 264-0745
 4703 Chester Drive, Elkhart, IN 46516

A	8/30/2022	RELEASE FOR PRODUCTION			EAF
REV	DATE	DESCRIPTION			BY:
DELIVERY CONCEPTS, INC. 29301 C. R. 20, ELKHART, IN. 46517		DESCRIPTION SCHEMATICS OF COMPASS-SANTA ROSA HOSPITAL	PLOT SCALE	DRAWN BY	STATUS
BOM NO. MK00164			NTS	EAF	ACTIVE
DWG. NO. S03086		SERIES MK	DATE 8/30/2022	ALL DIMENSIONS ARE IN INCHES, UNLESS NOTED OTHERWISE	DRAWING TOLERANCES +/- .050 (DECIMAL) +/- 1/8 (FRACTIONAL)
		SHEET OF 5 5	THIS DRAWING AND THE INFORMATION CONTAINED WITHIN ARE THE EXCLUSIVE PROPERTY OF DELIVERY CONCEPTS, INC. IT SHALL NOT BE DUPLICATED WITHOUT WRITTEN CONSENT FROM DCL.		

Building Size	264" x 96" x 84"
Model	22' Morgan Olsen
Main Breaker Size:	50
Panel Voltage:	240 Volts
Panel Phase:	1

Panel
#1

Lighting Area Served	N/A (LV)
Lighting Factor	N/A (LV)

Circuit #	Breaker	Description	Qty.	Voltage	Watts/Item	Connected Load	Load Factor	Calculated Load	Total Load
1A	20	Refrigeration	1	120	264	264	1.25	330	330
2A	20	Refrigeration	1	120	696	696	1.25	870	870
3A	20	Power	1	120	120	120	1	120	120
4A	20	Refrigeration	1	120	384	384	1.25	480	480
5A	20	Microwave	1	120	1560	1560	1	1560	1560
6A	20	Hood Fan	1	120	972	972	1	972	972
7A	20	Power	1	120	120	120	1	120	120
8A	20	Converter	1	120	424	424	1	424	424
9A	20	Warmer	1	120	960	960	1.25	1200	1200
10A	20	Refrigeration	1	120	960	960	1.25	1200	1200
								Total Panel Load (Watts) =	7276
								Total Panel Load (Amps) =	30.32

APPROVED : State of CA-Certified Design Approval Agency
Review of these plans and/or specifications does not
authorize or approve any deviation from requirements of
State laws or applicable local ordinances.

P.A. # TRA- 8580 DATE
ISSUED: 10/26/2022

EXP.
DATE **FEB 29, 2024**

Reviewed By *Michael A. Jones*

T.R. Arnold & Associates, Inc. Telephone (574) 264-0745
4703 Chester Drive, Elkhart, IN 46516

Building Size	264" x 96" x 84"
Model	22' Morgan Olsen
Main Breaker Size:	50
Panel Voltage:	240 Volts
Panel Phase:	1

Panel
#2

Lighting Area Served	N/A (LV)
Lighting Factor	N/A (LV)

Circuit #	Breaker	Description	Qty.	Voltage	Watts/Item	Connected Load	Load Factor	Calculated Load	Total Load
1B	20	Water Heater	1	120	1992	1992	1.25	2490	2490
2A	20	Power (Radio)	1	120	120	120	1	120	120
3B	20	Warmer	1	120	2200	2200	1.25	2750	2750
4B	20	Air Conditioner	1	120	1992	1992	1	1992	1992
5B	20	Air Conditioner	1	120	1992	1992	1	1992	1992
6B	20	Power (TV)	1	480	120	120	1	120	120
								Total Panel Load (Watts) =	9464
								Total Panel Load (Amps) =	39.43

APPROVED : State of CA-Certified Design Approval Agency
Review of these plans and/or specifications does not
authorize or approve any deviation from requirements of
State laws or applicable local ordinances.

P.A. # TRA- 8580 DATE
ISSUED: 10/26/2022

EXP. DATE **FEB 29, 2024**

Reviewed By *Michael A. Jonko*

T.R. Arnold & Associates, Inc. Telephone (574) 264-0745
4703 Chester Drive, Elkhart, IN 46516

FOR QUESTIONS, CALL THE
Indiana Office
REGION 56
PHONE: (317) 852-3770
EMAIL: reg56@econair.com

HOOD INFORMATION – JOB#5607675

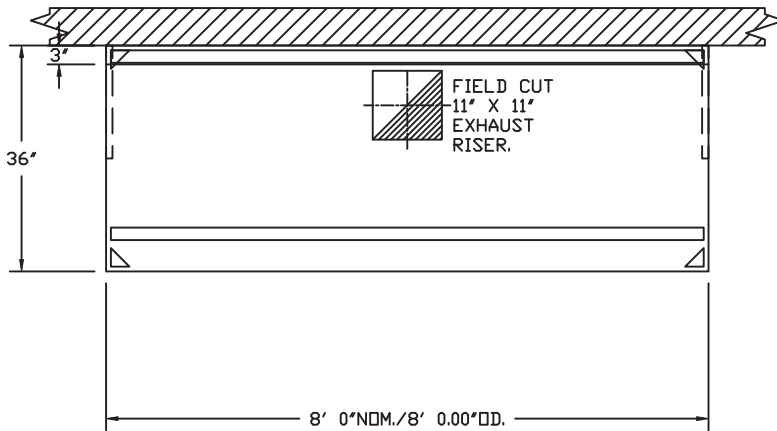
HOOD NO	TAG	MODEL	MANUFACTURER	LENGTH	MAX COOKING TEMP	TYPE	APPLIANCE DUTY	DESIGN CFM/FT	TOTAL EXH CFM	EXHAUST PLENUM RISER(S)						HOOD CONSTRUCTION	HOOD CONFIG		
										WIDTH	LENG	HEIGHT	DIA	CFM	VEL		SP	END TO END	ROW
1		3642 ELPX-2-T-6	ECON-AIR	8' 0"	450 DEG	I	MEDIUM	188	1500	11'	11'	4'		1500	1785	-0.493'	430 SS WHERE EXPOSED	ALONE	ALONE

HOOD INFORMATION

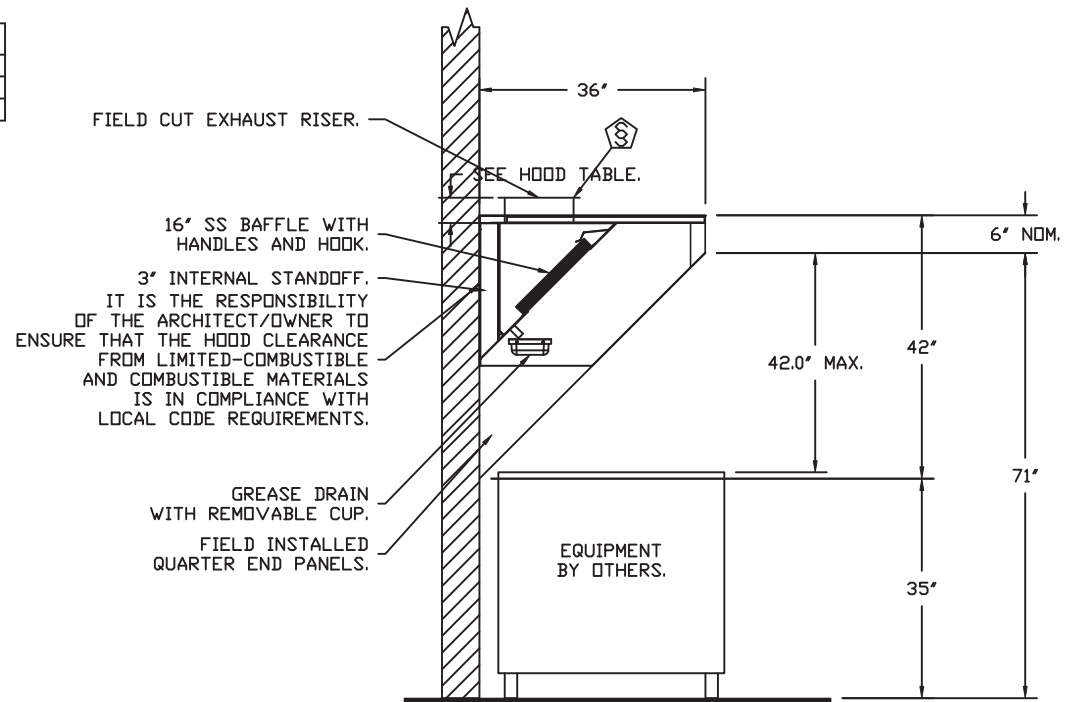
HOOD NO	TAG	FILTER(S)				LIGHT(S)				UTILITY CABINET(S)				FIRE SYSTEM PIPING	HOOD HANGING WEIGHT		
		TYPE	QTY	HEIGHT	LENGTH	EFFICIENCY @ 7 MICRONS	QTY	TYPE	WIRE GUARD	LOCATION	SIZE	TYPE	SIZE			ELECTRICAL MODEL #	SWITCHES QUANTITY
1		SS BAFFLE WITH HANDLES	5	16"	16"	30%	0									NO	203 LBS

HOOD OPTIONS

HOOD NO	TAG	OPTION
1		RIGHT QUARTER END PANEL 18" TOP WIDTH, 0" BOTTOM WIDTH, 18" HIGH 430 SS.
		LEFT QUARTER END PANEL 18" TOP WIDTH, 0" BOTTOM WIDTH, 18" HIGH 430 SS.
		CONCESSION TRAILER INSTALL KIT.



PLAN VIEW – HOOD #1
8' 0.00" LONG 3642ELPX-2-T-6



SECTION VIEW – MODEL 3642ELPX-2-T-6
HOOD – #1

APPROVED : State of CA-Certified Design Approval Agency
Review of these plans and/or specifications does not authorize or approve any deviation from requirements of State laws or applicable local ordinances.

P.A. # TRA- 8580 DATE ISSUED: 10/26/2022

EXP. DATE **FEB 29, 2024**

Reviewed By Michael A Tomko

T.R. Arnold & Associates, Inc. Telephone (574) 264-0745
4703 Chester Drive, Elkhart, IN 46516



JOB COMPASS SANTA ROSA HOSPITAL	
LOCATION Osceola, IN,	
DATE 8/19/2022	JOB # 5607675
DWG # 1	DRAWN BY DCM-56
REV.	SCALE 3/8" = 1'-0"

SPECIFICATIONS
TAG Commercial Kitchen Ventilation Hoods, Listed Commercial Kitchen Hoods
PART 1 - GENERAL

1.1 SUMMARY

- A. The BDE series is a Type I, low proximity hood for use over 450°F cooking surface temperatures. The low proximity hood refers to the close location of the hood with respect to the cooking appliances.
- B. The hood shall have the size, shape, and performance specified on drawings.

1.2 SUBMITTALS

- A. The manufacturer assumes no liability for the use or results of use from this document. Specifications are to be reviewed by the engineer to confirm the project's requirements and meet Federal, State, and Local codes and regulations.
- B. As the manufacturer continues product development, it reserves the right to change design and specifications without notice.
- C. The manufacturer shall supply complete computer generated submittal drawings, including hood section views and hood plan view(s). These drawings must be available to the engineer, architect, and owner for their use in construction, operation, and maintenance.

1.3 QUALITY ASSURANCE

- A. This hood is ETL-listed to standard UL710, ULC710, and ULC-S646 when installed in accordance with these installation instructions and National Fire Protection Association Standard NFPA 96, Standard for Ventilation Control and Fire Protection of Commercial Cooking Operations.
- B. Built-in compliance with NSF/ANSI Standard 2.
- C. The hood shall be ETL Listed as:
1. Exhaust Hood Without Exhaust Damper.
 2. ETL Sanitation Listed and built in accordance with NFPA 96.
 3. The ETL label shall list temperature rating(s) and minimum CFM/ft rating(s).

1.4 WARRANTY

- A. All units shall be provided with the following standard warranty:
1. This equipment is warranted to be free from defects in materials and workmanship, under normal use and service, for a period of 2-years from date of shipment.
- B. The manufacturer shall not be liable for incidental and consequential losses and damages potentially attributable to malfunctioning equipment. Should any part of the equipment prove to be defective in material or workmanship within the 2-year warranty period, upon examination by the manufacturer, such part will be repaired or replaced by manufacturer at no charge. The buyer shall pay all labor costs incurred in connection with such repair or replacement. Equipment shall not be returned without manufacturer's prior authorization, and all returned equipment shall be shipped by the buyer, freight prepaid to a destination determined by the manufacturer.
- C. Refer to Manufacturer's Operation, Installation, and Maintenance (OIM) Manual for detailed descriptions of what is/is not covered and contact information for warranty claims.

PART 2 - PRODUCTS**2.1 GENERAL**

- A. Construction shall be dependent on the structural application to minimize distortion and other defects. All seams, joints, and penetrations of the hood enclosure to the lower outermost perimeter, which directs and captures grease-laden vapor and exhaust gases, shall have a liquid-tight continuous external weld in accordance with NFPA 96.
- B. Duct sizes, CFM, and static pressure requirements shall be as shown

on drawings. Static pressure requirements shall be precise and accurate; air velocity and volume information shall be accurate within 1-ft increments along the length of the ventilator.

2.2 CONSTRUCTION

- A. Construction shall be type 430 stainless steel.
- B. Double wall insulated front to eliminate condensation and increase rigidity on wide sizes. The insulation shall have a flexural modulus of 475 EI, meet UL 181 requirements and be in accordance with NFPA 90A and 90B.
- C. Hood shall be equipped with a minimum of four connections for hanger rods. Hood lengths greater than 12' will have added hangers.
- D. Exhaust duct collar to be 4" high with flange.
- E. The grease drain system shall be an enclosed integral part of the hood back and have slopes with an exposed, removable 1/2" grease cup to facilitate cleaning.
- F. Hood shall be furnished with UL classified filters, supplied in size and quantity as required by ventilator.
- G. All seams shall be welded and have stainless steel on exposed surfaces.

2.3 FILTERS

- A. Kleen-Gard Stainless Steel Baffle Filter with Handles and Bottom Hanging Hook, UL Classified.

2.4 ACCESSORIES

- A. End Panel(s) maximize hood performance and eliminate the effects of cross drafts in the kitchen. Units constructed of stainless steel and sized according to hood width and cooking equipment. Exposed edges hemmed for safety and rigidity. Selected panels:
1. Quarter End Panel
- B. Miscellaneous option(s) selected:
1. Concession Trailer Install Kit - Hardware kit for concession trailer hood installation.

PART 3 - EXECUTION**3.1 EXAMINATION**

- A. Examine areas and conditions under which the system is installed. Do not proceed with work until unsatisfactory conditions have been corrected in a manner acceptable to installer.

3.2 INSTALLATION

- A. Install in accordance with manufacturer's instructions, drawings, written specifications, manufacturer's installation manual, and all applicable building codes.

APPROVED : State of CA-Certified Design Approval Agency
 Review of these plans and/or specifications does not
 authorize or approve any deviation from requirements of
 State laws or applicable local ordinances.

P.A. # TRA- 8580

DATE
ISSUED: 10/26/2022EXP.
DATE**FEB 29, 2024**

Reviewed By

*Michael A. Tomko*T.R. Arnold & Associates, Inc. Telephone (574) 264-0745
4703 Chester Drive, Elkhart, IN 46516

JOB COMPASS SANTA ROSA HOSPITAL	
LOCATION Osceola, IN,	
DATE 8/19/2022	JOB # 5607675
DWG # 2	DRAWN BY DCM-56
REV.	SCALE 1/4" = 1'-0"

EXHAUST FAN INFORMATION - JOB#5607675

FAN UNIT NO	TAG	QTY	FAN UNIT MODEL #	MANUFACTURER	CFM	ESP	RPM	MOTOR ENCL	HP	BHP	PHASE	VOLT	FLA	DISCHARGE VELOCITY	WEIGHT (LBS)	SONES
1		1	EADU50H	ECON-AIR	1500	0.500	1481	ODP	0.500	0.3360	1	115	8.4	570 FPM	88	15.1608269833196

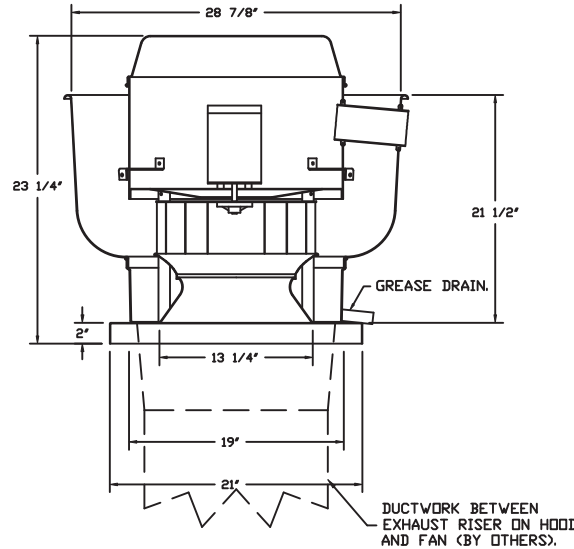
FAN OPTIONS

FAN UNIT NO	TAG	QTY	DESCRIPTION
1		1	GREASE BOX
		1	LOW PROFILE OPTION - 50
		1	2 YEAR PARTS WARRANTY

FAN #1 EADU50H - EXHAUST FAN

FAN ACCESSORIES

FAN UNIT NO	TAG	EXHAUST			SUPPLY			
		GREASE CUP	GRAVITY DAMPER	WALL MOUNT	SIDE DISCHARGE	GRAVITY DAMPER	MOTORIZED DAMPER	WALL MOUNT
1		YES						



FEATURES:

- DIRECT DRIVE CONSTRUCTION (NO BELTS/PULLEYS).
- ROOF MOUNTED FANS.
- RESTAURANT MODEL.
- UL705 AND UL762 AND ULC-S645
- VARIABLE SPEED CONTROL.
- INTERNAL WIRING.
- THERMAL OVERLOAD PROTECTION (SINGLE PHASE).
- HIGH HEAT OPERATION 300°F (149°C).
- GREASE CLASSIFICATION TESTING.
- NEMA 3R SAFETY DISCONNECT SWITCH.

NORMAL TEMPERATURE TEST

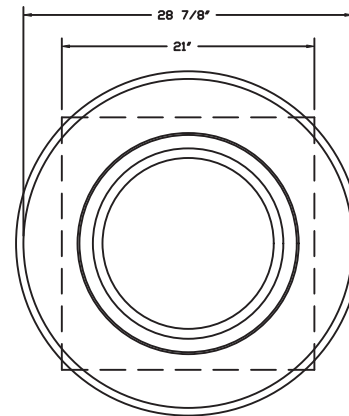
EXHAUST FAN MUST OPERATE CONTINUOUSLY WHILE EXHAUSTING AIR AT 300°F (149°C) UNTIL ALL FAN PARTS HAVE REACHED THERMAL EQUILIBRIUM, AND WITHOUT ANY DETERIORATING EFFECTS TO THE FAN WHICH WOULD CAUSE UNSAFE OPERATION.

ABNORMAL FLARE-UP TEST

EXHAUST FAN MUST OPERATE CONTINUOUSLY WHILE EXHAUSTING BURNING GREASE VAPORS AT 600°F (316°C) FOR A PERIOD OF 15 MINUTES WITHOUT THE FAN BECOMING DAMAGED TO ANY EXTENT THAT COULD CAUSE AN UNSAFE CONDITION.

OPTIONS

- GREASE BOX.
- LOW PROFILE OPTION - 50.
- 2 YEAR PARTS WARRANTY.



TOP VIEW

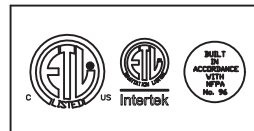
APPROVED : State of CA-Certified Design Approval Agency
Review of these plans and/or specifications does not authorize or approve any deviation from requirements of State laws or applicable local ordinances.

P.A. # TRA- 8580 DATE ISSUED: 10/26/2022

EXP. DATE **FEB 29, 2024**

Reviewed By *Michael A Tomko*

T.R. Arnold & Associates, Inc. Telephone (574) 264-0745
4703 Chester Drive, Elkhart, IN 46516



JOB COMPASS SANTA ROSA HOSPITAL	
LOCATION Osceola, IN,	
DATE 8/19/2022	JOB # 5607675
DWG # 3	DRAWN BY DCM-56
REV.	SCALE 3/8" = 1'-0"



GREASE DUCT & CHIMNEY SPECIFICATIONS:

PROVIDE GREASE DUCT EQUAL TO ECON-AIR MODEL "EDW" ROUND 20 GAUGE 430 STAINLESS STEEL DUCTWORK. MODEL "EDW" IS LISTED TO UL-1978 AND IS INSTALLED USING "V" CLAMP LOCKING CONNECTIONS SEALED WITH 3M FIRE BARRIER 2000 PLUS. MODEL "EDW" DOES NOT REQUIRE WELDING PROVIDING IT HAS BEEN INSTALLED PER THE MANUFACTURES INSTALLATION GUIDE.

PROVIDE RATED ACCESS DOORS AT EVERY CHANGE IN DIRECTION AND EVERY 12' ON CENTER. PER MANUFACTURES LISTING MODEL "EDW" HORIZONTAL RUNS LESS THAN 75 FT. CAN BE SLOPED 1/16" PER 12", HORIZONTAL RUNS MORE THAN 75 FT. CAN BE SLOPED 3/16" PER 12". DUCT SHOULD BE SLOPED AS MUCH AS POSSIBLE TO REDUCE THE CHANCE OF GREASE ACCUMULATION IN HORIZONTAL RUNS.

IF THE DUCT OR CHIMNEY IS WITHIN 18 INCHES OF COMBUSTIBLE MATERIAL, PROVIDE UL-2221 OR UL-103 HT LISTED DOUBLE WALL GREASE DUCT OR DOUBLE WALL CHIMNEY EQUAL TO ECON-AIR MODEL "EDW- 2R, 2R TYPE HT, 3R, OR 3Z" ROUND 20 GAUGE 430 STAINLESS INNER DUCT INSULATED WITH A 24 GAUGE 430 STAINLESS OUTER SHELL.

CUSTOMER APPROVAL TO MANUFACTURE:

APPROVED AS NOTED	<input type="checkbox"/>
APPROVED WITH NO EXCEPTION TAKEN	<input type="checkbox"/>
REVISE AND RESUBMIT	<input type="checkbox"/>
SIGNATURE _____	
YOUR TITLE _____	DATE _____

APPROVED : State of CA-Certified Design Approval Agency
Review of these plans and/or specifications does not authorize or approve any deviation from requirements of State laws or applicable local ordinances.

P.A. # TRA- 8580 DATE ISSUED: 10/26/2022

EXP. DATE **FEB 29, 2024**

Reviewed By Michael A Tomko

T.R. Arnold & Associates, Inc. Telephone (574) 264-0745
4703 Chester Drive, Elkhart, IN 46516



JOB COMPASS SANTA ROSA HOSPITAL	
LOCATION Osceola, IN,	
DATE 8/19/2022	JOB # 5607675
DWG # 4	DRAWN BY DCM-56
REV.	SCALE 3/8" = 1'-0"

GREASE BOX INSTALLATION

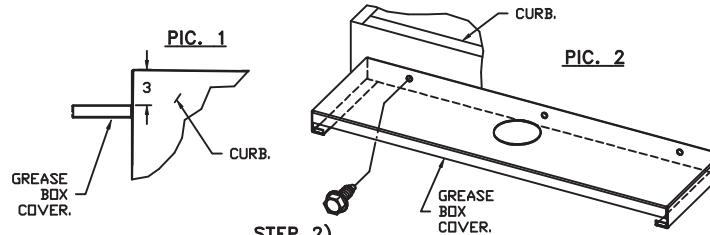
PARTS INCLUDED

- GREASE BOX.
- GREASE BOX COVER.
- GREASE PIPE.
- SHEET METAL SCREWS
3 - LONG (3/4" LG.).

GREASE BOX FIELD INSTALLATION

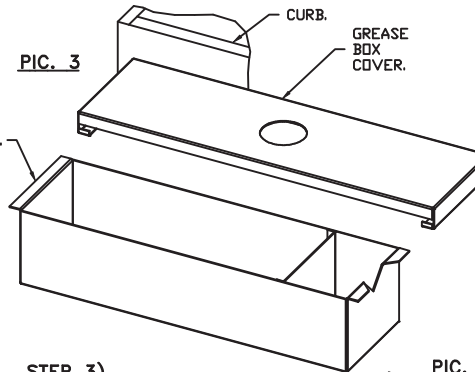
STEP 1)

ATTACH GREASE BOX COVER TO THE CURB, HOLD 3" DIMENSION AS SHOWN ON PIC. 1. SCREW GREASE BOX COVER TO CURB USING (3) LONG (3/4" LG.) SCREWS AS SHOWN ON PIC. 2.



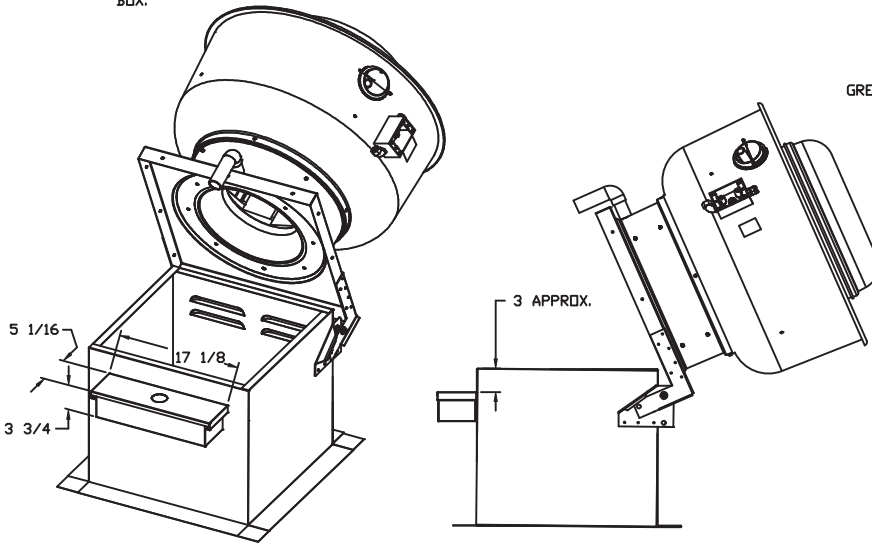
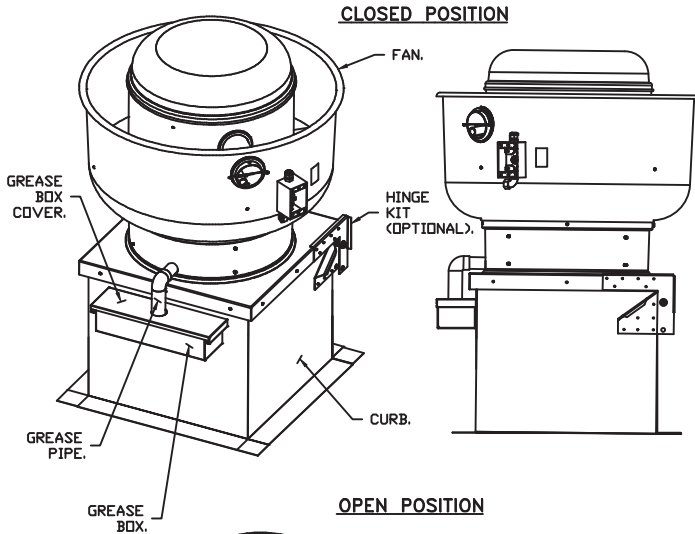
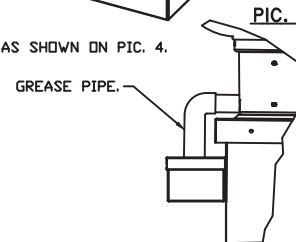
STEP 2)

ATTACH GREASE BOX TO GREASE BOX COVER, SLIDE AND DROP AS SHOWN ON PIC. 3.



STEP 3)

INSTALL GREASE PIPE AS SHOWN ON PIC. 4.



*NOTE: UL 705 INSTALL.

APPROVED : State of CA-Certified Design Approval Agency
Review of these plans and/or specifications does not authorize or approve any deviation from requirements of State laws or applicable local ordinances.

P.A. # TRA- 8580 DATE ISSUED: 10/26/2022

EXP. DATE **FEB 29, 2024**

Reviewed By *Michael A Tomko*

T.R. Arnold & Associates, Inc. Telephone (574) 264-0745
4703 Chester Drive, Elkhart, IN 46516



JOB COMPASS SANTA ROSA HOSPITAL	
LOCATION Osceola, IN,	
DATE 8/19/2022	JOB # 5607675
DWG # 5	DRAWN BY DCM-56
REV.	SCALE 3/8" = 1'-0"

Exhaust Fan Wiring

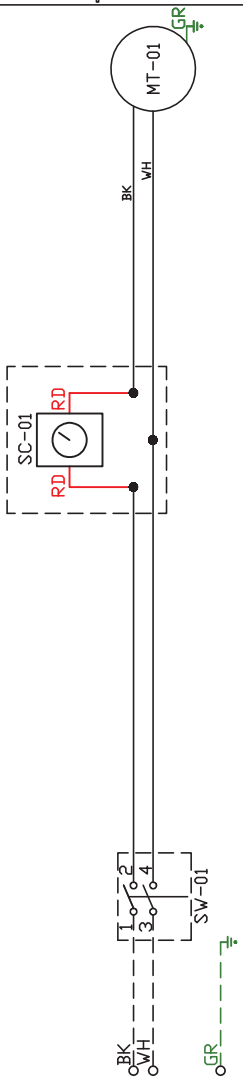
JOB 5607675 - COMPASS SANTA ROSA HOSPITAL

DRAWING NUMBER EXH5607675-1

SHIP DATE 8/19/2022

MODEL EADU50H

1
2
3
4
5
6
7
8
9
10
11
12
13
14
15
16
17
18
19
20
21
22
23



Installed Options

Speed Control

Label	Component Description	Location
MT-01	Fan Motor	[3]
QD-01	Quick Disconnect	[3]
SC-01	Speed Control	[2]
SW-01	Main disconnect switch	[3]

APPROVED : State of CA-Certified Design Approval Agency
 Review of these plans and/or specifications does not authorize or approve any deviation from requirements of State laws or applicable local ordinances.

P.A. # TRA- 8580 DATE ISSUED: 10/26/2022

EXP. DATE **FEB 29, 2024**

Reviewed By *Michael A Tomko*

T.R. Arnold & Associates, Inc. Telephone (574) 264-0745
 4703 Chester Drive, Elkhart, IN 46516

EXHAUST MOTOR INFO 0.5HP-115V-1P-8.4FLA

ELECTRICAL INFORMATION
 MOTOR/CTRL MCA: 10.5A
 MOTOR/CTRL MOP: 15A

NOTES
 --- DENOTES FIELD WIRING
 --- DENOTES INTERNAL WIRING

WIRE COLOR
 BK - BLACK YW - YELLOW
 BL - BLUE GR - GREEN
 BR - BROWN GY - GRAY
 OR - ORANGE PR - PURPLE
 RD - RED PK - PINK
 WH - WHITE