

COLOR & MATERIAL BOARD FOR:

NORTHPOINT COMMERCE CENTER

AT THUNDERBOLT WAY
SANTA ROSA, CALIFORNIA

RWW Architecture
Interiors
City of Santa Rosa

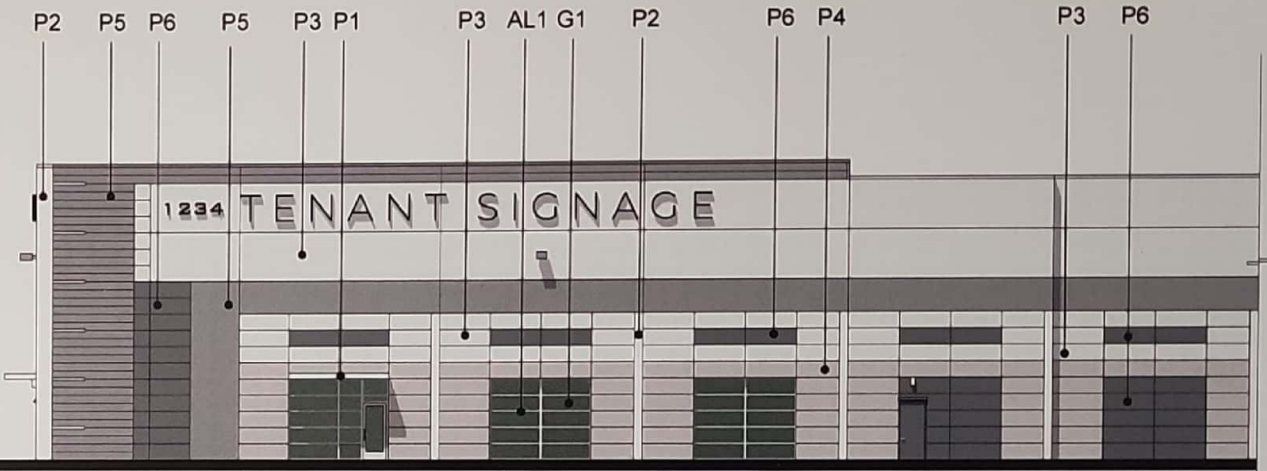
Planning & Economic
Development Department

Apr 5, 2023

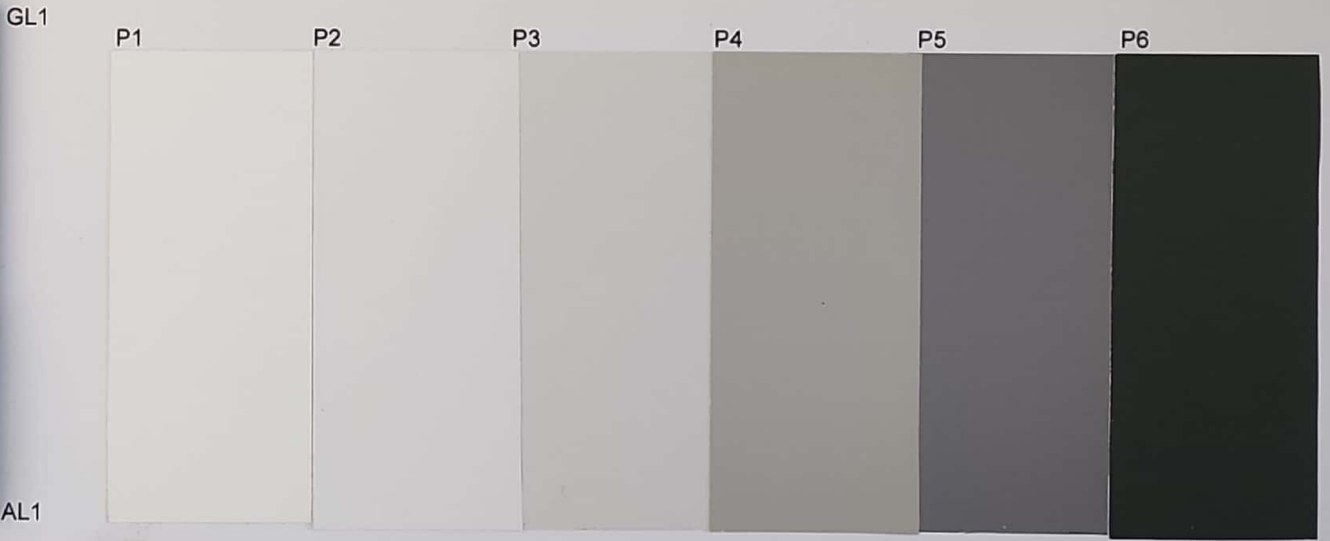
RECEIVED



PERSPECTIVE RENDERING



PARTIAL EAST ELEVATION



ATLANTICA® Glass + Glaze Below if Insulating Glass Unit

Sample	U-Value (W/m ² ·K)	Visible Transmittance (VLT)	Visible Light Reflection (VLR)	Total Solar Radiation (TSR)	Light Transmission (LT)	
ATLANTICA® 991.01	0.76	74%	7%	1.02	0.53	1.20
ATLANTICA® 992.01	0.76	74%	7%	1.02	0.53	1.20
ATLANTICA® 993.01	0.76	74%	7%	1.02	0.53	1.20
ATLANTICA® 994.01	0.76	74%	7%	1.02	0.53	1.20
ATLANTICA® 995.01	0.76	74%	7%	1.02	0.53	1.20
ATLANTICA® 996.01	0.76	74%	7%	1.02	0.53	1.20
ATLANTICA® 997.01	0.76	74%	7%	1.02	0.53	1.20
ATLANTICA® 998.01	0.76	74%	7%	1.02	0.53	1.20
ATLANTICA® 999.01	0.76	74%	7%	1.02	0.53	1.20
ATLANTICA® 990.01	0.76	74%	7%	1.02	0.53	1.20

AL1

AL1

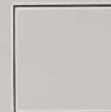
FINISH SCHEDULE



P1: PAINT 1
SHERWIN WILLIAMS
SW7757 HIGH REFLECTIVE
WHITE



P2: PAINT 2
SHERWIN WILLIAMS
SW7006 EXTRA WHITE



P3: PAINT 3
SHERWIN WILLIAMS
SW7646 FIRST STAR



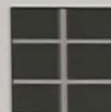
P4: PAINT 4
SHERWIN WILLIAMS
SW7016 MINDFUL GRAY



P5: PAINT 5
SHERWIN WILLIAMS
SW7670 GRAY SHINGLE



P6: PAINT 6
SHERWIN WILLIAMS
SW6208 PEWTER GREEN



GL1: VITRO ARCHITECTURAL
GLASS "ATLANTICA"
EMERALD GREEN GLASS
IN THERMALLY BROKEN
CLEAR ANODIZED
ALUMINUM FRAMES