

# Santa Rosa (SROSA01) FirstNet/AT&T Project

2715 Griffin Avenue

Santa Rosa, CA

March 2024





# FirstNet™

“During the Route 91 mass shooting, I was unable to contact the Incident Commander from my phone because the system was saturated with phone calls, and I couldn’t get through. By dedicating Band 14, FirstNet is the game changer that directly helps the helpers save lives.”

Jeff Buchanan, Deputy Fire Chief  
Clark County Fire Department



## CALIFORNIA FIRE CHIEFS ASSOCIATION

1851 Heritage Lane, Ste. 138 • Sacramento, CA 95815

Of: 916-923-9455 [www.CalChiefs.org](http://www.CalChiefs.org)

### California Fire Chiefs Association Resolution

The California Fire Chiefs Association hereby supports expanding the Nationwide Public Safety Broadband Network (Firstnet) dedicated to first responders.

*WHEREAS:* over 81% of all calls to 911 are via cellular phones, and

*WHEREAS:* the people we are sworn to serve benefit from improved and reliable cellular coverage during an emergency, and

*WHEREAS:* Public Safety responders use cellular networks to communicate with the community important actions such as evacuation notifications, amber alerts, road blockages/closures, and community safety messages, and

*WHEREAS:* during emergencies, the community provides responders with valuable and necessary scene intelligence, and

*WHEREAS:* during EMS events, lifesaving instructions are relayed to citizen bystanders while responders are enroute, and

*WHEREAS:* the real-time location of responders aids in situational awareness and inter-discipline effectiveness, and

*WHEREAS:* the United States has deployed a nationwide public safety cellular (broadband) LTE network known as the Nationwide Public Safety Broadband Network (NPSBN) with their partner ATT/FirstNet (broadband) network to exclusively serve public safety responders known as FirstNet, and

*WHEREAS:* deployment of FirstNet wireless terrestrial coverage also provides ATT commercial/consumer services, and

*WHEREAS:* FirstNet, the Nationwide Public Safety Broadband Network built with AT&T is the only official public safety network, and

*WHEREAS:* all 56 States, Territories and Commonwealths have officially opted into the Nationwide Public Safety Broadband Network,

*NOW THEREFORE BE IT RESOLVED:* For purposes of land use planning, zoning and related conditions, the California Fire Chiefs Association (CalChiefs) requests that FirstNet infrastructure shall be recognized as public safety infrastructure.

Adopted by the Board of Directors this 5th Day of April, 2022


President Ray Gayk

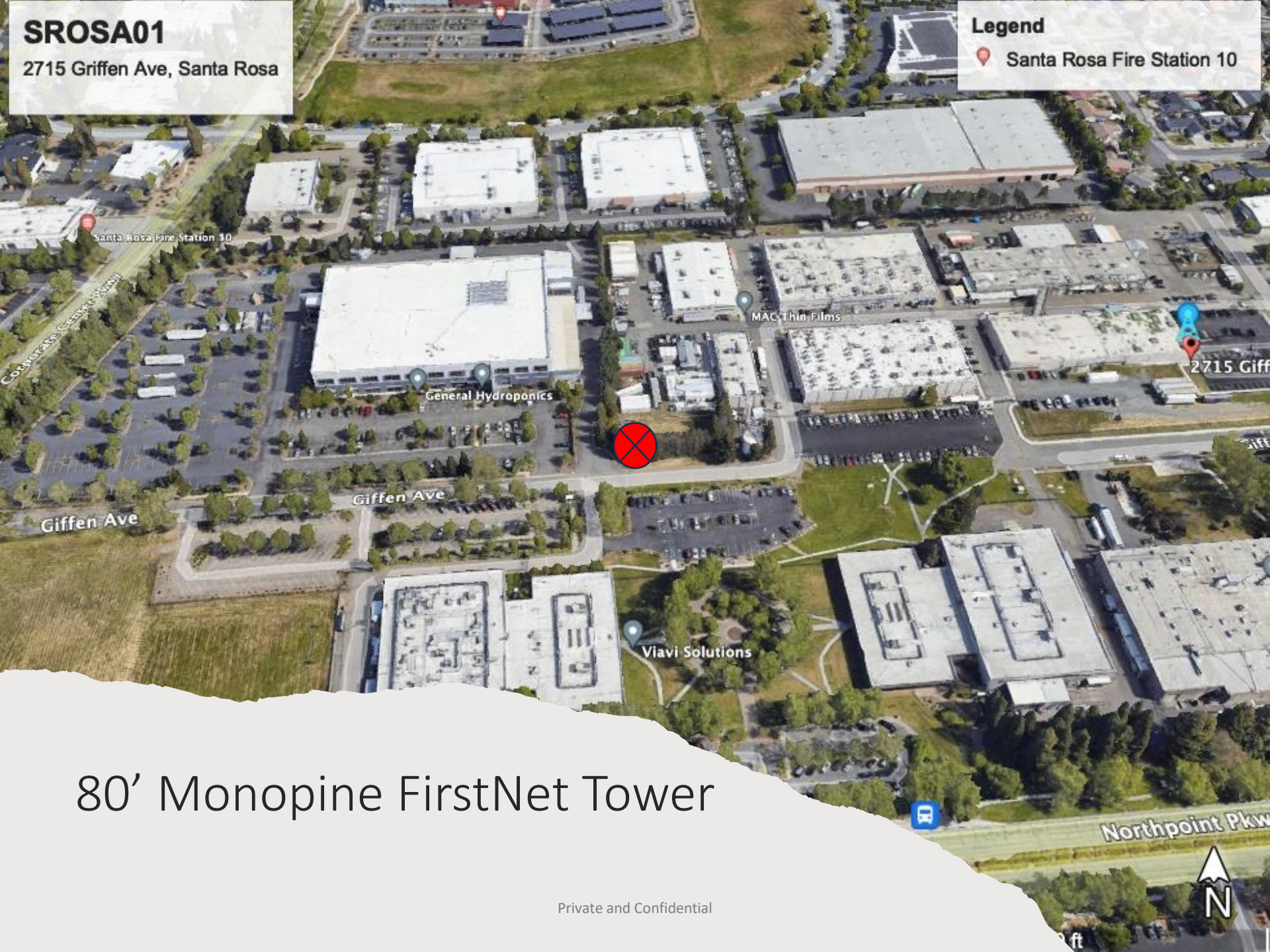
A handwritten signature in blue ink, appearing to read "Ray Gayk", is written over a horizontal line.

**SROSA01**

2715 Griffen Ave, Santa Rosa

**Legend**

 Santa Rosa Fire Station 10

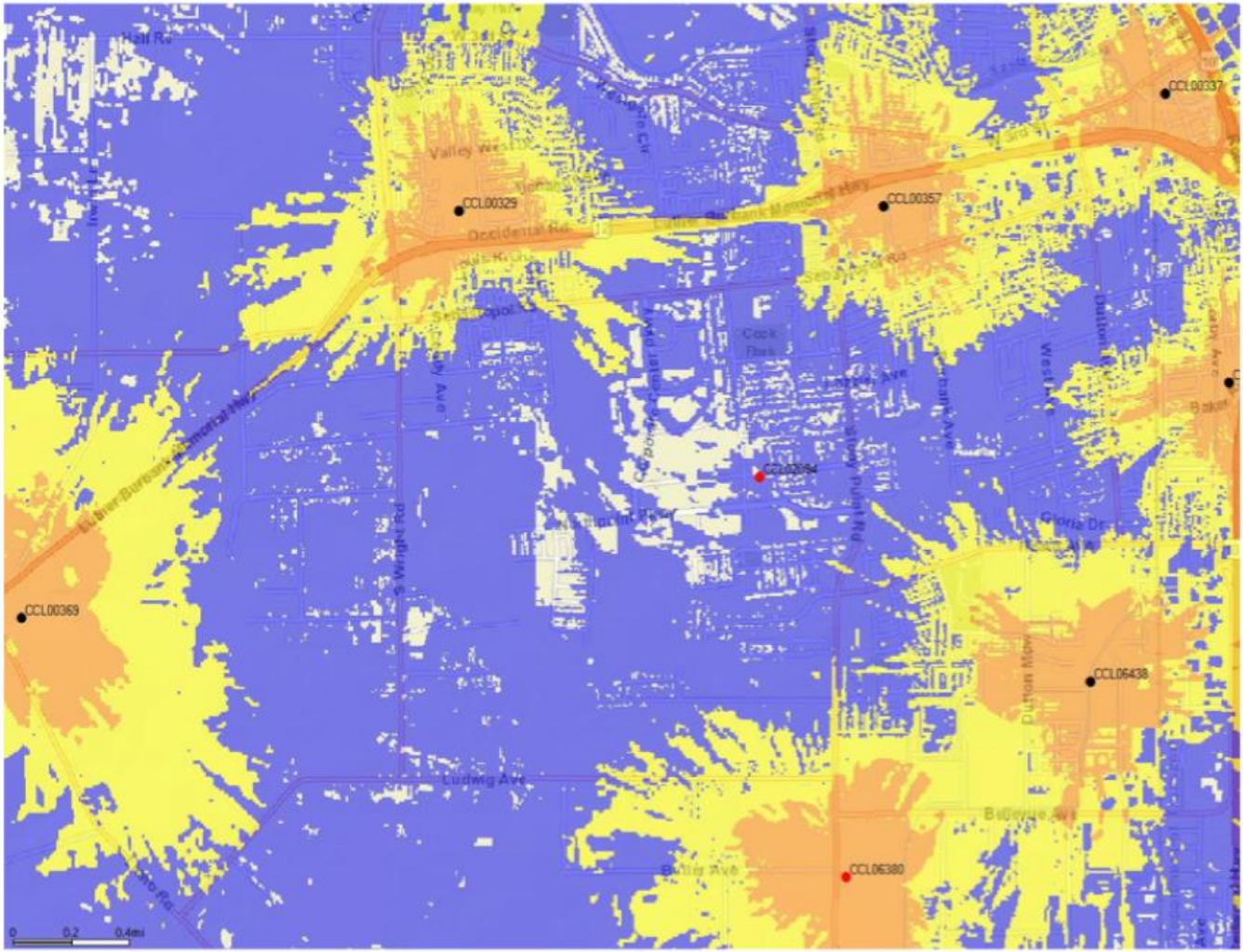


80' Monopine FirstNet Tower

Private and Confidential

# COVERAGE MAPS

# LTE 700 Existing Coverage

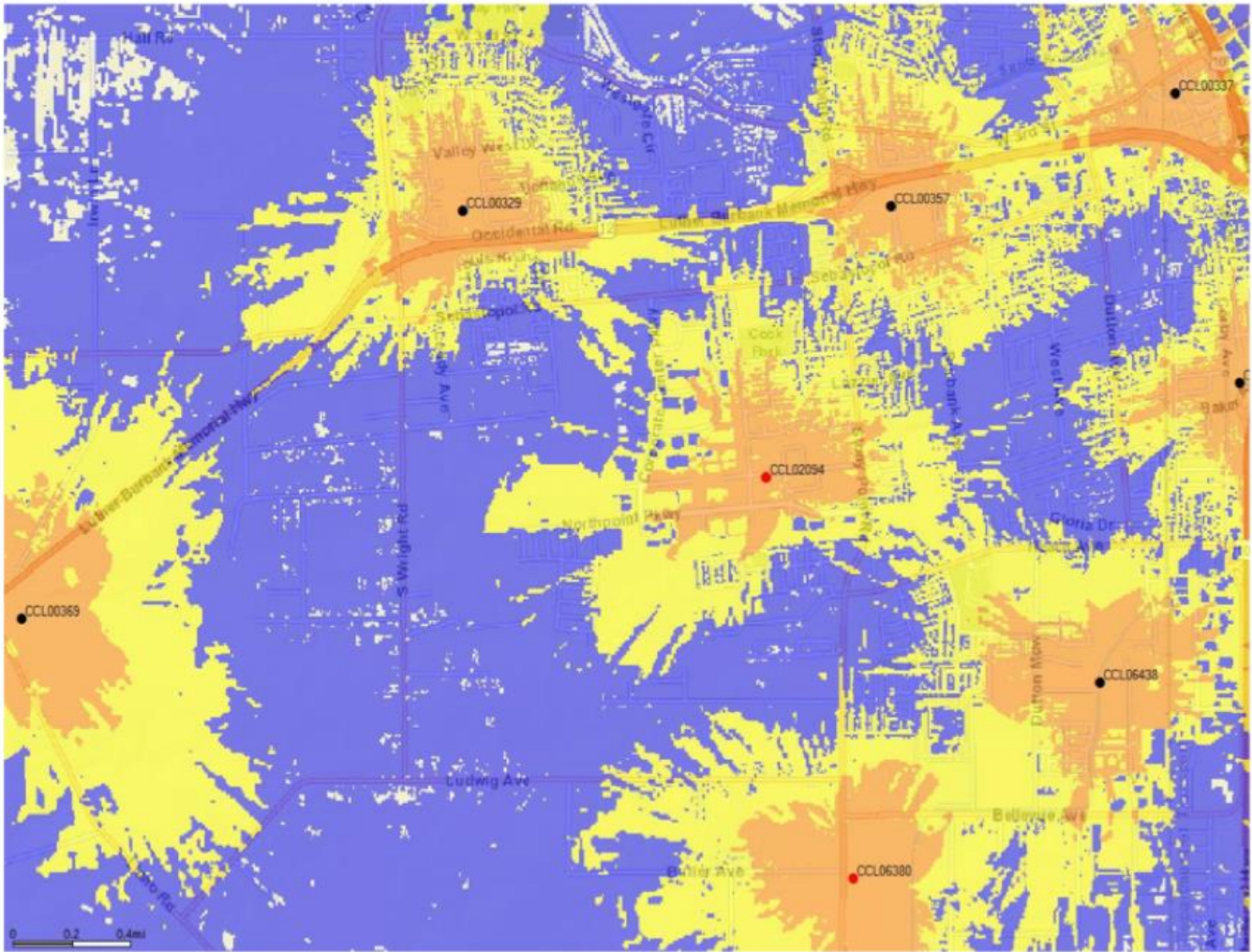


## Legend

- Reliable Service Indoors/Outdoors
- Reliable Coverage in Transit  
Indoor Coverage Less Reliable
- Reliable Coverage Outdoors Only  
Indoor Coverage Less Reliable
- Existing site
- Proposed site



# LTE 700 Existing Coverage



## Legend

- Reliable Service Indoors/Outdoors
- Reliable Coverage in Transit  
Indoor Coverage Less Reliable
- Reliable Coverage Outdoors Only  
Indoor Coverage Less Reliable
- Existing site
- Proposed site



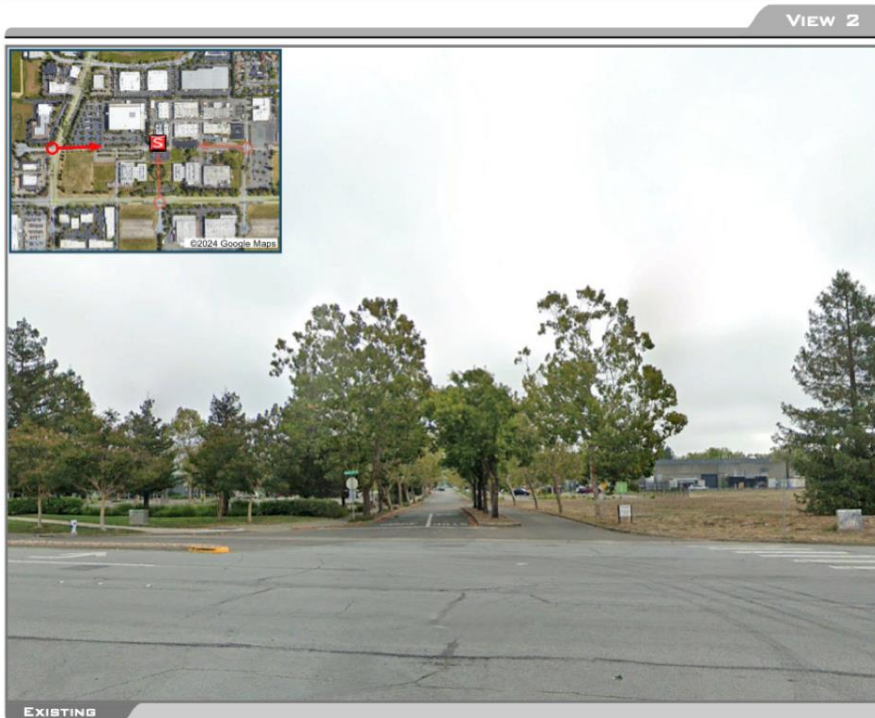
# Photo Sims



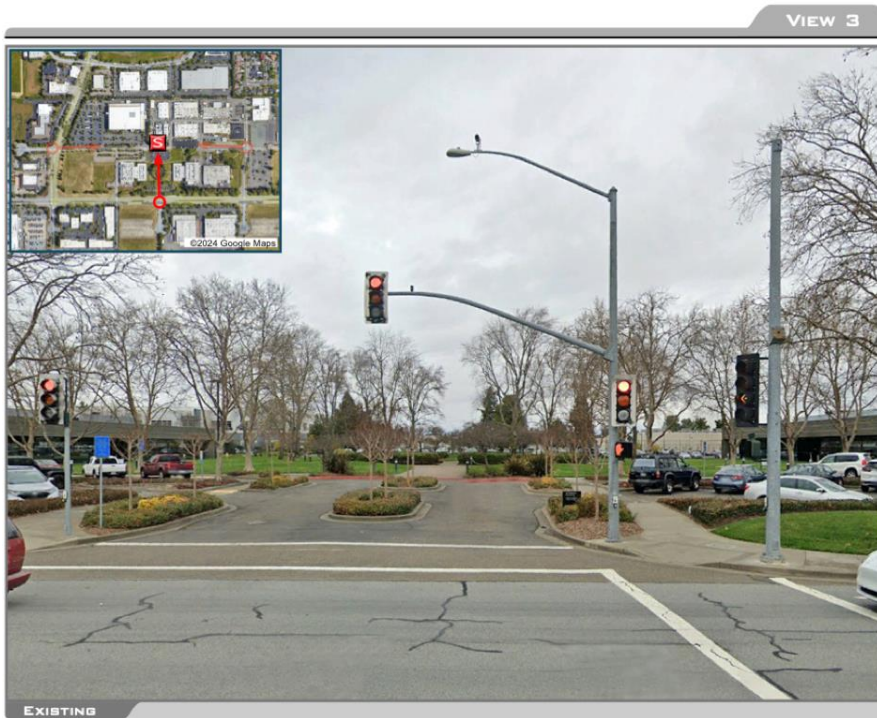
# Photosim - east to west



# Photosim – west to east

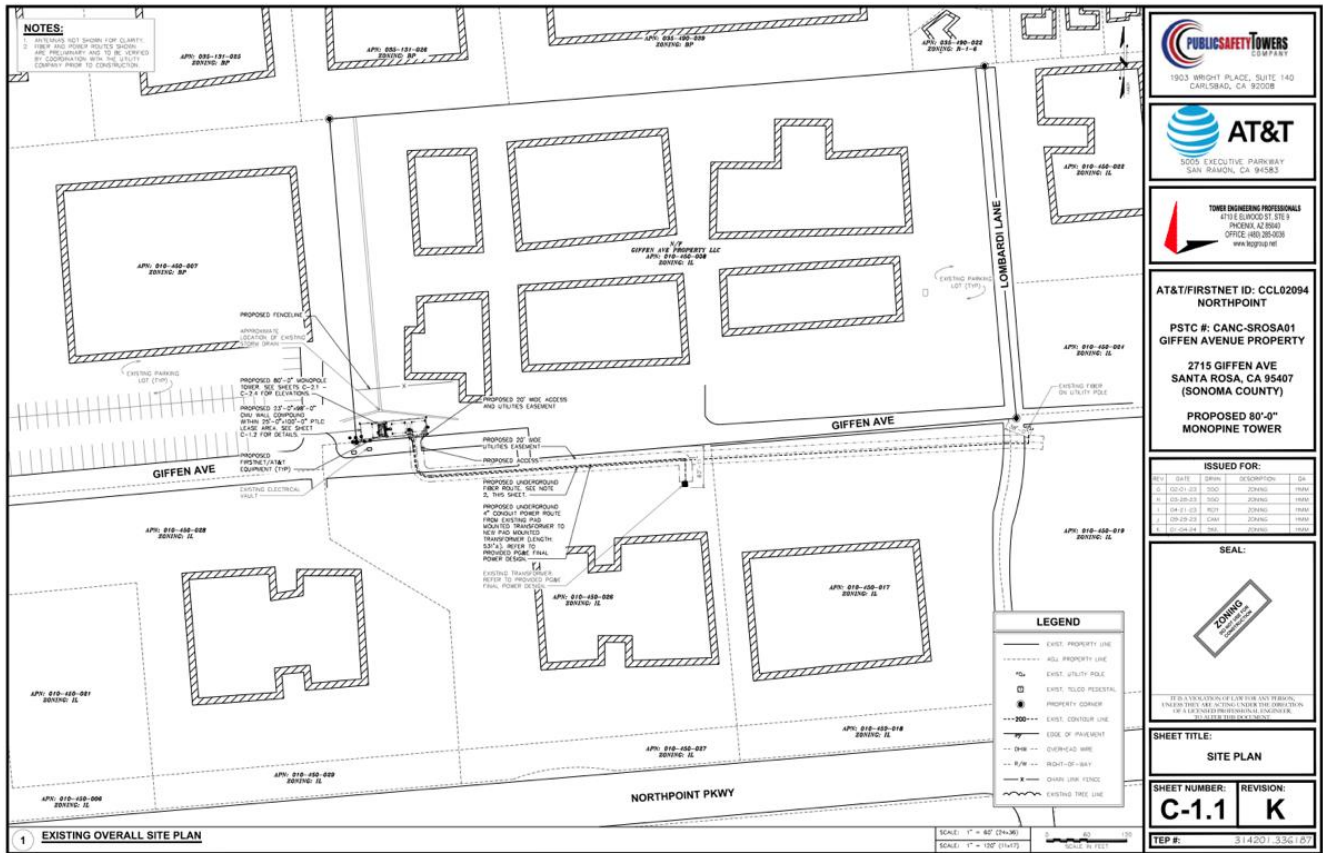


# Photosim – south to north

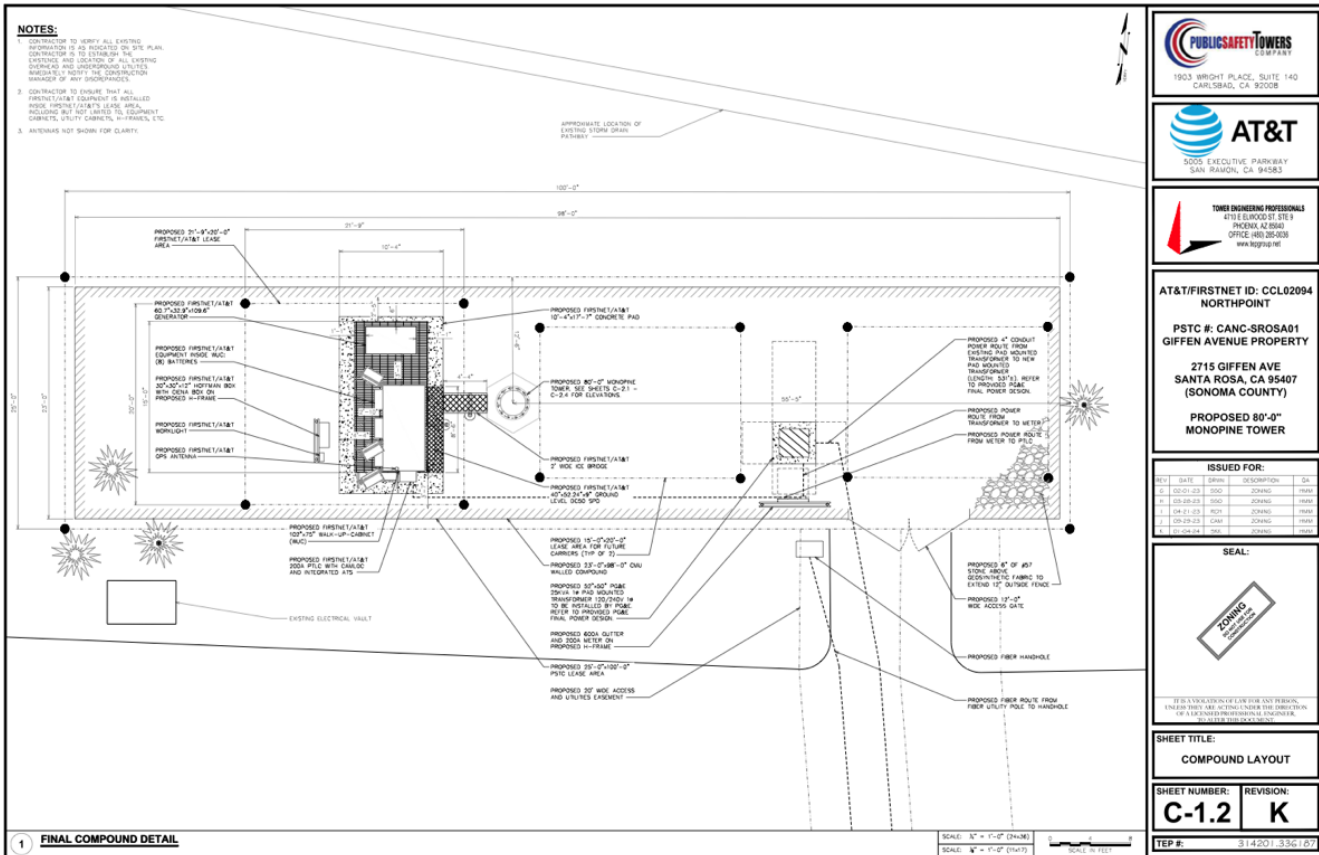


# DRAWINGS

# Site Plan



# Compound Layout



**PUBLIC SAFETY TOWERS COMPANY**  
1903 WRIGHT PLACE, SUITE 140  
CARLSBAD, CA 92008

**AT&T**  
3005 EXECUTIVE PARKWAY  
SAN RAMON, CA 94583

**TOWER ENGINEERING PROFESSIONALS**  
810 E. WOOD ST. STE 3  
PUEBLO, CO 81001  
OFFICE: (303) 255-0308  
WWW.TEPPROF.COM

AT&T/FIRSTNET ID: CCL02094  
NORTHPOINT

PSTC #: CANC-SROSA01  
GIFFEN AVENUE PROPERTY

2715 GIFFEN AVE  
SANTA ROSA, CA 95407  
(SONOMA COUNTY)

**PROPOSED 80'-0" MONOPINE TOWER**

**ISSUED FOR:**

| REV. | DATE     | BY   | DESCRIPTION | CHK.   |
|------|----------|------|-------------|--------|
| 1    | 09-01-23 | ESD  | ISSUE       | JONJAG |
| 2    | 09-29-23 | TRAC | ISSUE       | JONJAG |
| 3    | 09-21-23 | TRAC | ISSUE       | JONJAG |
| 4    | 09-19-23 | LCM  | ISSUE       | JONJAG |
| 5    | 09-04-23 | TRAC | ISSUE       | JONJAG |

**SEAL:**



Jon Jag  
Professional Engineer  
No. 15321  
California  
09/21/2023

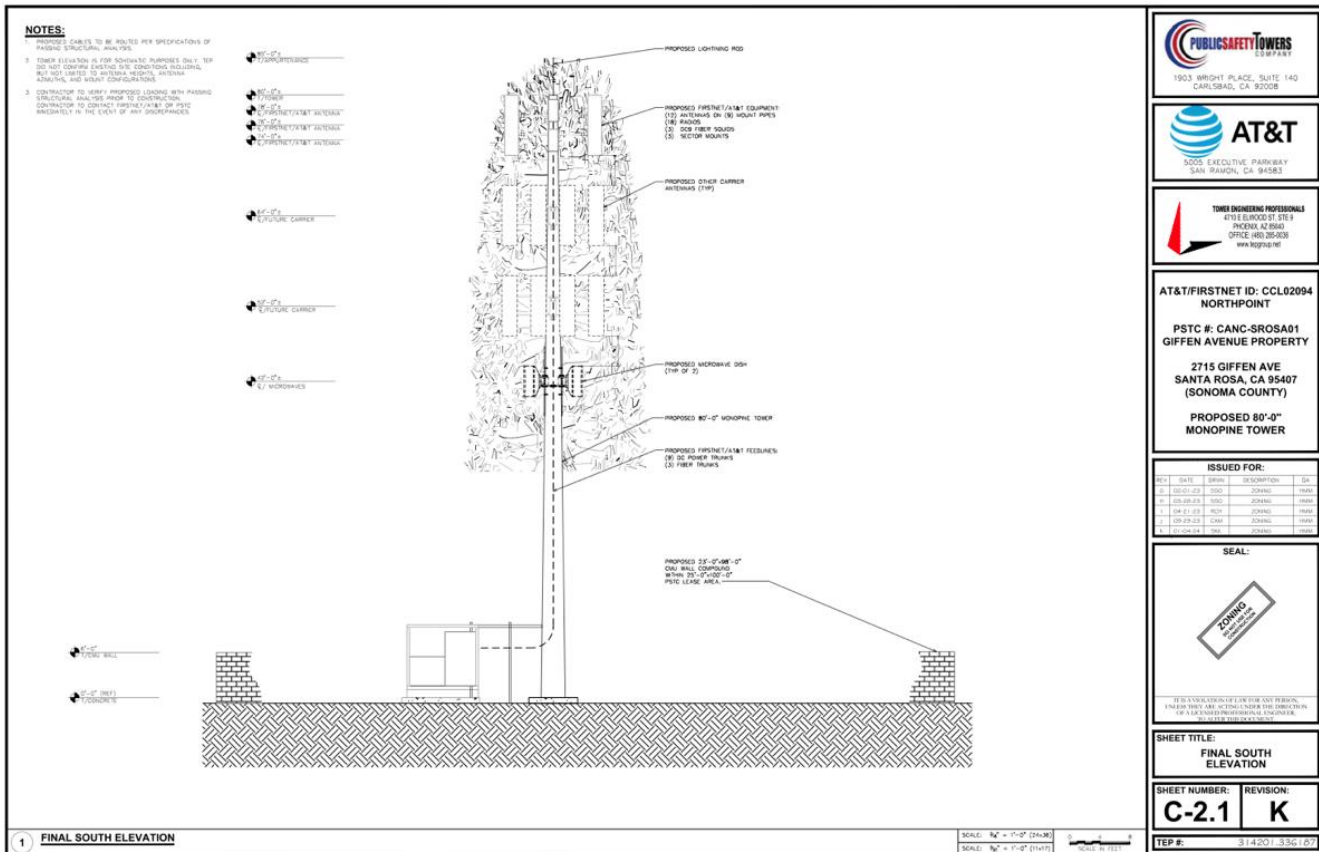
IT IS THE SOLE RESPONSIBILITY OF THE USER HEREON, AND NOT THE ENGINEER, ARCHITECT, OR DESIGNER, TO VERIFY THE ACCURACY OF THE INFORMATION PROVIDED BY THE USER.

**SHEET TITLE:**  
COMPOUND LAYOUT

**SHEET NUMBER:** C-1.2  
**REVISION:** K

**TEP #:** 314201-336167

# Elevation



**PUBLIC SAFETY TOWERS**  
CORP

1903 BRIGHT PLACE, SUITE 140  
CARLSBAD, CA 92008

**AT&T**

3005 EXECUTIVE PARKWAY  
SAN RAFAEL, CA 94583

**TOWERS ENGINEERING PROFESSIONALS**

4710 ELWOOD ST. STE 1  
PACIFICA, CA 94026  
OFFICE: 415.355.0308  
WWW.TEPGROUP.COM

AT&T/FIRSTNET ID: CCL02094  
NORTHPOINT

PSTC #: CANC-SROSA01  
GIFFEN AVENUE PROPERTY

2715 GIFFEN AVE  
SANTA ROSA, CA 95407  
(SONOMA COUNTY)

PROPOSED 80'-0"  
MONOPINE TOWER



QUESTIONS?