

SANTA ROSA FIRE STATION 5 RESILIENCY & RELOCATION

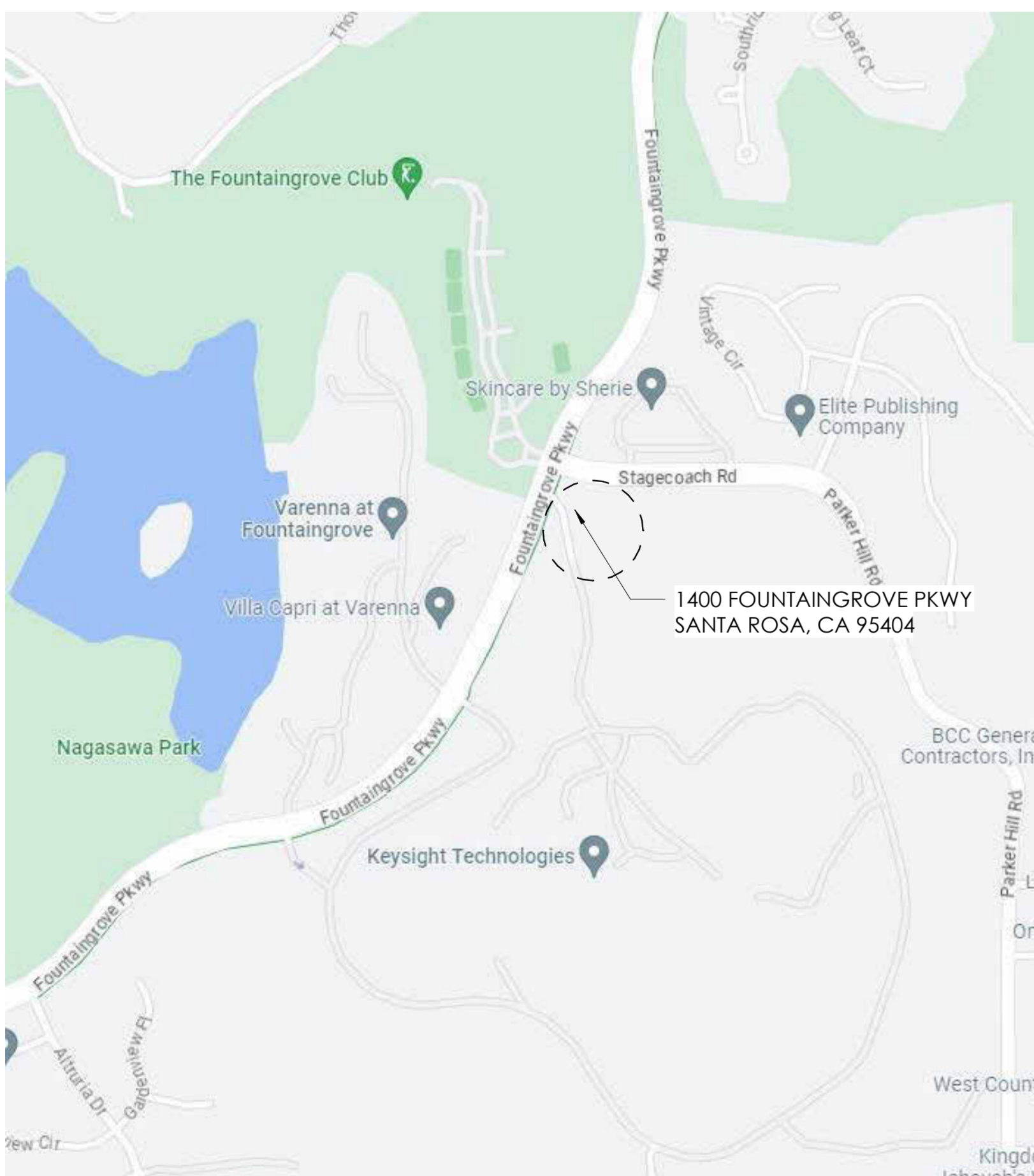
1400 FOUNTAININGROVE PARKWAY, SANTA ROSA, CA 95404



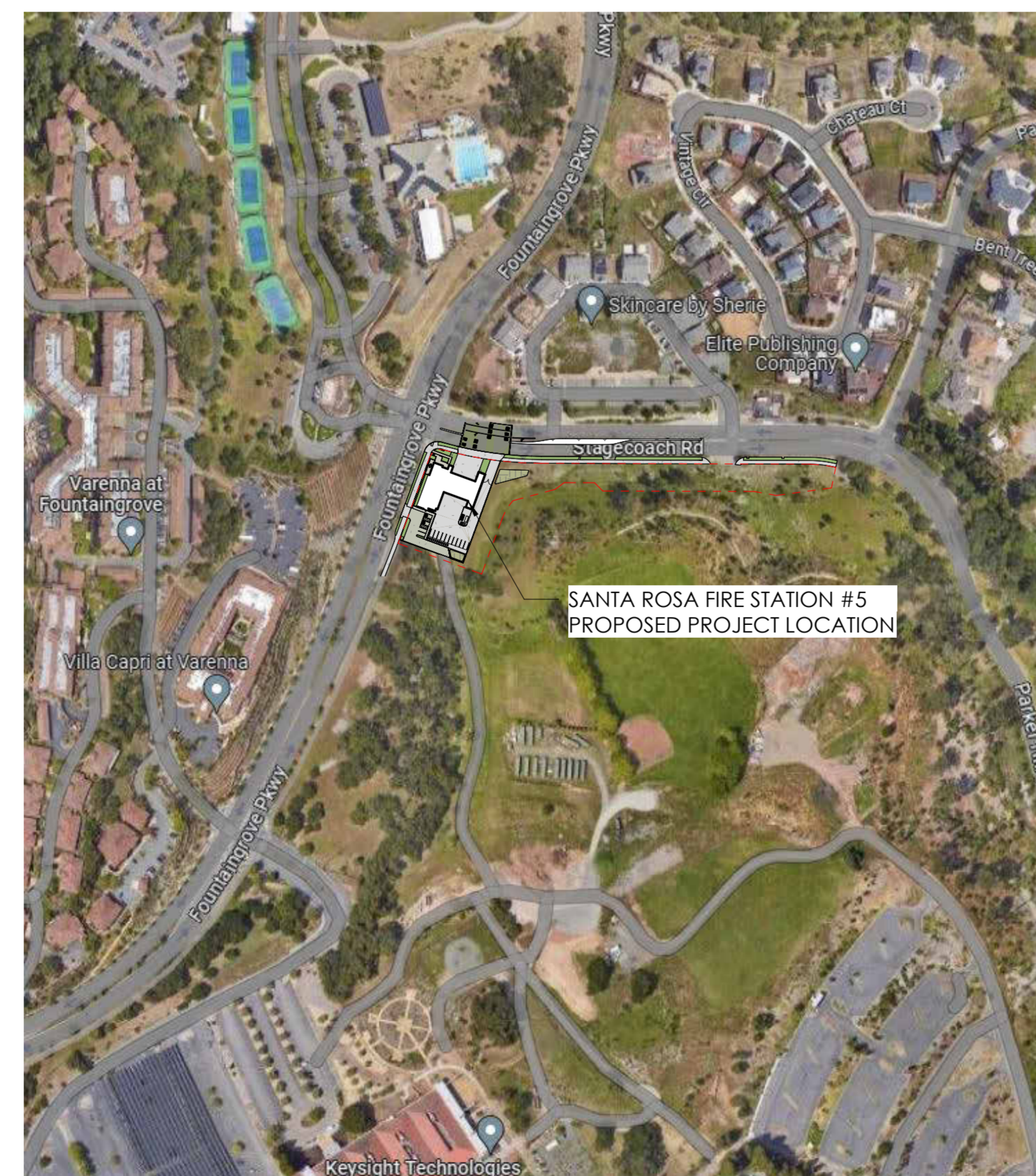
200 E STREET, SANTA ROSA, CA 95404
415.698.9177 | www.coargroup.com



LOCATION MAP



VICINITY MAP



PROJECT DATA

| | | | | | | | |
|-------------------------------|--|--------------------------|------------------------|--------------------------|--|------------------------|-----------|
| PROJECT ADDRESS: | 1400 FOUNTAININGROVE PARKWAY SANTA ROSA, CA 95404 | | | | | | |
| ASSESSOR'S PARCEL NO.: | 173-670-035 | | | | | | |
| OWNER: | LISA WELSH, CITY OF SANTA ROSA 69 STONY CIRCLE SANTA ROSA, CA 95401 P: 707.543.3909 E: LWELSH@SRCITY.ORG | | | | | | |
| GOVERNING CODES: | 2022 CBC 2022 CMC 2022 CEC 2022 CPC 2022 CFC 2022 CALIFORNIA GREEN BUILDING STANDARDS 2022 CALIFORNIA ENERGY CODE | | | | | | |
| SCOPE OF WORK: | CONSTRUCT A NEW ONE-STORY FIRE STATION, INCLUDING AN APPARATUS BAY, WITH ASSOCIATED SUPPORT AREAS | | | | | | |
| OCCUPANCY GROUP: | B, R-2, S-2 | | | | | | |
| CONSTRUCTION TYPE: | V-8 SPRINKLERED | | | | | | |
| ACTUAL BLDG AREA: | 8,744 S.F. | | | | | | |
| SITE AREA: | 23,000 S.F. (0.53 ACRES) | | | | | | |
| NUMBER OF STORIES: | 1 | | | | | | |
| MAX BUILDING HEIGHT: | 32'-6" | | | | | | |
| PARKING: | <table border="0"> <tr> <td>Parking Required:</td> <td>Public: No Requirement</td> </tr> <tr> <td>Parking Provided:</td> <td>Accessible Parking Spaces: 04 Standard Parking Spaces: 10</td> </tr> <tr> <td>Public Parking:</td> <td>Total: 14</td> </tr> </table> | Parking Required: | Public: No Requirement | Parking Provided: | Accessible Parking Spaces: 04 Standard Parking Spaces: 10 | Public Parking: | Total: 14 |
| Parking Required: | Public: No Requirement | | | | | | |
| Parking Provided: | Accessible Parking Spaces: 04 Standard Parking Spaces: 10 | | | | | | |
| Public Parking: | Total: 14 | | | | | | |

LEGAL DESCRIPTION

PARCEL: 173-670-035
LEGAL DESCRIPTION

NOTE:

A REGISTERED CALIFORNIA ARCHITECT, CIVIL OR STRUCTURAL ENGINEER SHALL OBSERVE THE WORK OF CONSTRUCTION AND SUBMIT AFFIDAVITS ATTESTING TO THE COMPLIANCE OF THE CONSTRUCTION WITH THE APPROVED CONTRACT DOCUMENTS.

PROJECT TEAM

ARCHITECTURE

COAR DESIGN GROUP
200 E STREET
SANTA ROSA, CA 95404
(619) 698-9177 / (619) 698-9178 (FAX)
Contact: Jeff Katz, AIA
jeff@coargroup.com

PLUMBING

CAPITAL ENGINEERING
11020 SUN CENTER DR.
RANCHO CORDOVA, CA 95670
(916) 851-3500
Contact: Iqbal Shahi
ishahi@capital-engineering.com

STRUCTURAL

ZFA
1212 FOURTH STREET SUITE Z
SANTA ROSA, CA 95404
(707) 526-0992 EXT. 120
Contact: Luke Wilson, SE LEED AP
lukew@zfa.com

ELECTRICAL

O'MAHONEY & MYER
4340 REDWOOD HIGHWAY #245
SAN RAFAEL, CA 94903
(415) 492-0420 EXT. 112
Contact: Pieter Colenbrander, PE
pcolenbrander@ammconsulting.com

MECHANICAL

CAPITAL ENGINEERING
11020 SUN CENTER DR.
RANCHO CORDOVA, CA 95670
(916) 851-3500
Contact: Iqbal Shahi
ishahi@capital-engineering.com

LANDSCAPE

QUADRIGA
1212 4TH ST, STUDIO K
SANTA ROSA, CA 95404
(707) 508-4483
Contact: CHRISTINE TALBOT, PLA ASLA
christine@quadriga-inc.com

PROJECT:

SANTA ROSA
FIRE STATION 5
RESILIENCY &
RELOCATION

1400 FOUNTAININGROVE
PARKWAY
SANTA ROSA, CA 95404



DESCRIPTION:

PLANNING
PACKAGE

DATE:

05/09/23

NOT FOR
CONSTRUCTION

PROJECT NUMBER:

221003

SHEET TITLE:

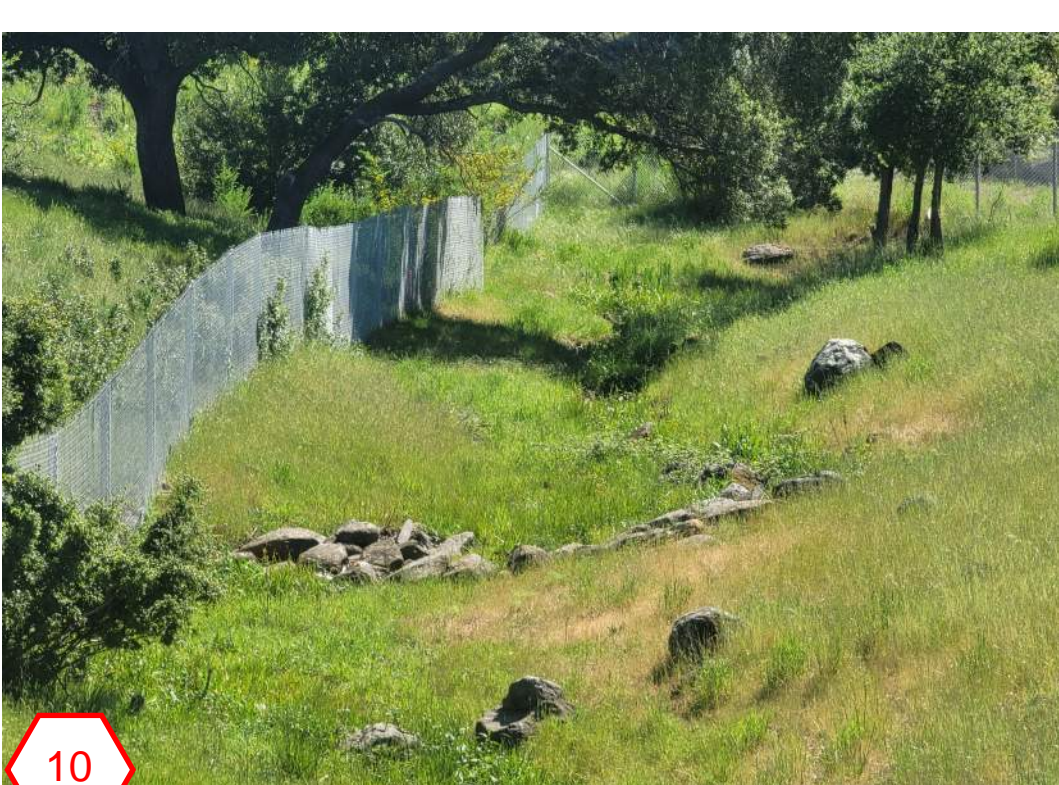
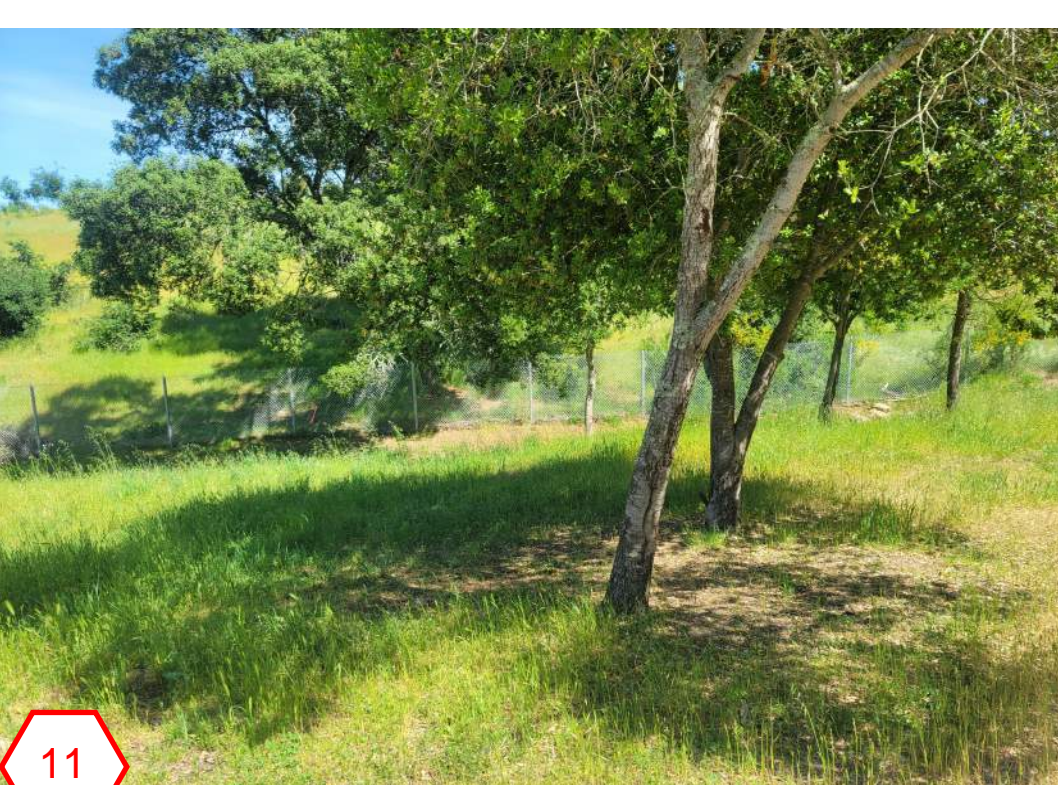
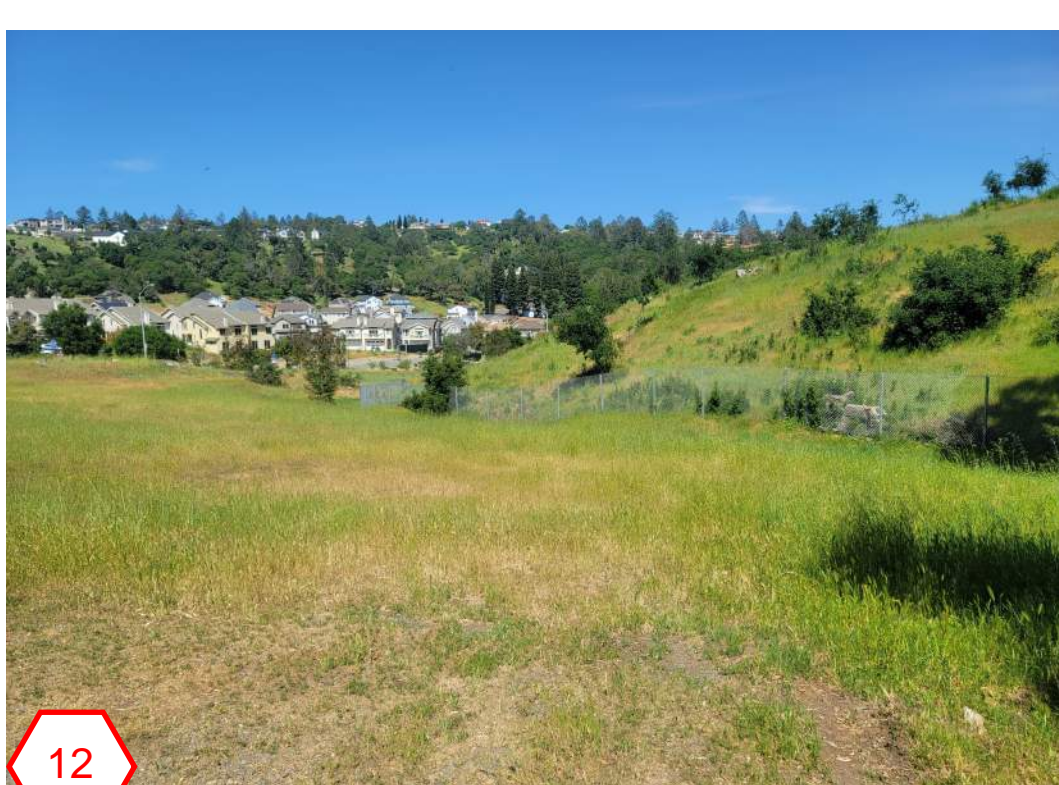
TITLE SHEET -
PLANNING

SHEET NUMBER:

T-1.0

SHEET INDEX

| No. | Description |
|-------|-----------------------------------|
| T-1.0 | TITLE SHEET - PLANNING |
| T-1.1 | SITE PHOTOGRAPHS |
| A-1.1 | SITE PLAN |
| L-1 | LANDSCAPE PLAN |
| A-2.0 | FLOOR PLAN |
| A-3.1 | EXTERIOR ELEVATIONS |
| A-3.2 | EXTERIOR ELEVATIONS |
| A-4.1 | BUILDING & EXISTING SITE SECTIONS |
| A-5.0 | 3D VIEW - EXTERIOR |



PROJECT:

SANTA ROSA
FIRE STATION 5
RESILIENCY &
RELOCATION
1400 FOUNTAIN GROVE
PARKWAY
SANTA ROSA, CA 95404



DESCRIPTION: **DATE:**
PLANNING PACKAGE 05/09/23

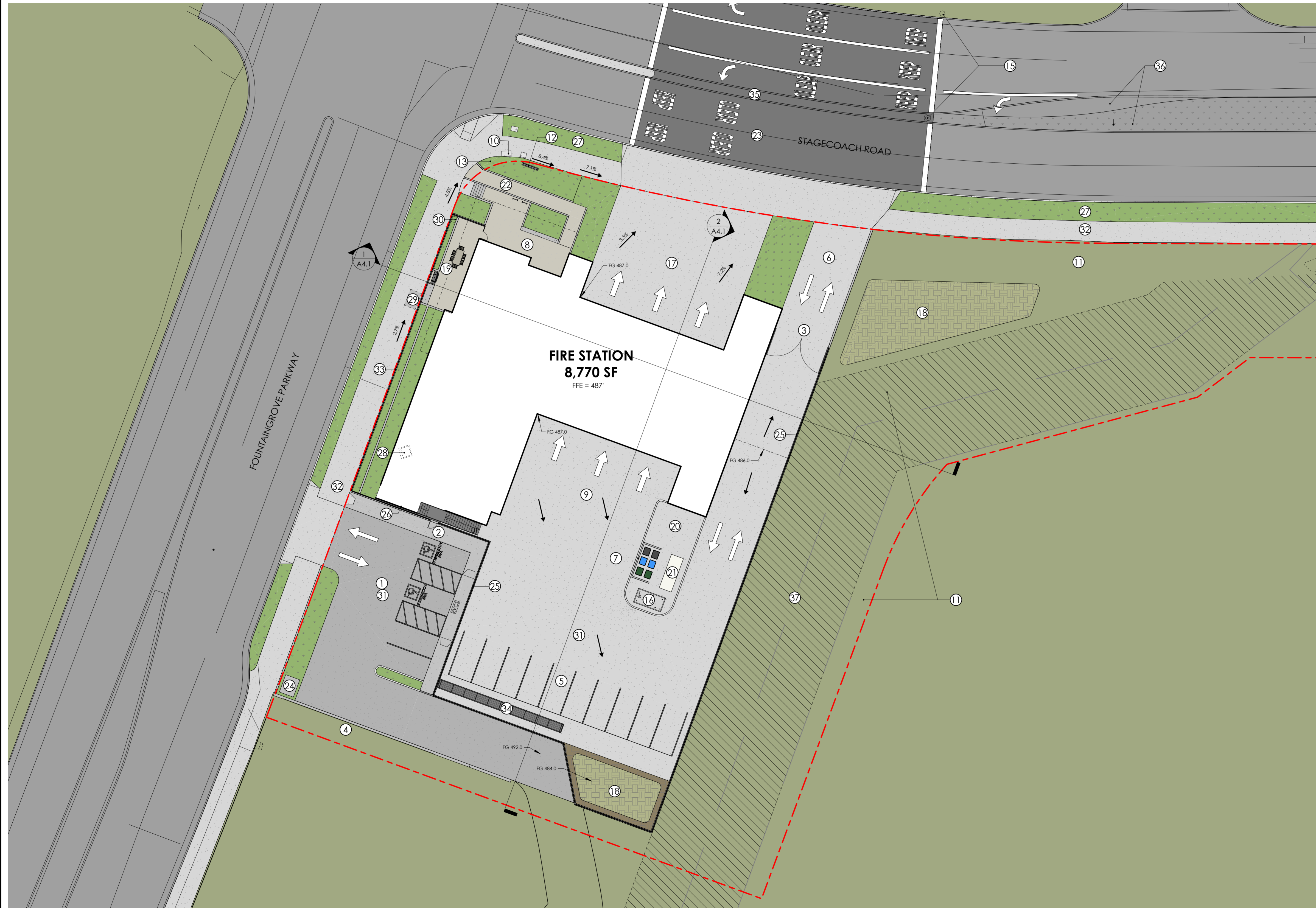
NOT FOR
CONSTRUCTION

PROJECT NUMBER:
221003

SHEET TITLE:
SITE PLAN

SHEET NUMBER:

A1.1



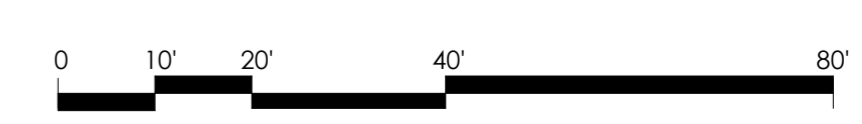
- ① PUBLIC PARKING (2 STANDARD & 2 ADA)
- ② PERSONNEL GATE
- ③ 7' HIGH SWINGING SECURITY GATE
- ④ CONCRETE RETAINING WALL, SEE CIVIL
- ⑤ SECURE PERSONNEL PARKING (10 SPACES)
- ⑥ DRIVEWAY
- ⑦ SCREENED TRASH AREA
- ⑧ PUBLIC ENTRY PLAZA
- ⑨ VEHICLE WASH AREA WITH FOX DRAIN
- ⑩ EXISTING TRAFFIC SIGNAL CONTROL SYSTEM W/ NEW FIRE DEPT. OVERRIDE "OPTICOM" CONTROL SYSTEM
- ⑪ AREA RESERVED FOR REPLACEMENT TREE REFORESTATION
- ⑫ MONUMENT SIGN
- ⑬ FLAG POLE
- ⑭ RELOCATED STREET LIGHT
- ⑮ TRAFFIC WARNING LIGHTS W/ OPTICOM DETECTOR; CONNECT TO EXISTING SIGNAL
- ⑯ FUEL TANK AND FILL STATION
- ⑰ RESPONSE DRIVEWAY
- ⑱ STORMWATER RETENTION
- ⑲ PATIO WITH BUILT-IN BBQ
- ⑳ COVERED FITNESS PATIO
- ㉑ EMERGENCY GENERATOR
- ㉒ RAMP
- ㉓ EMERGENCY VEHICLE TRAFFIC STRIPING TO BE COORDINATED WITH SANTA ROSA TRAFFIC ENGINEERING DEPARTMENT
- ㉔ TRANSFORMER - FINAL LOCATION TO BE COORDINATED WITH PG&E
- ㉕ 7' HIGH SECURITY FENCE
- ㉖ EXTERIOR EGRESS STAIR
- ㉗ EXPANDED PLANTING AREA
- ㉘ (E) PG&E TRANSFORMER TO BE RELOCATED
- ㉙ (E) AT&T VAULT
- ㉚ (E) STREET LIGHT TO BE RELOCATED
- ㉛ POLE MOUNTED PARKING LOT LIGHT FIXTURES WITH CUT OFF SHADES
- ㉜ CONCRETE SIDEWALK FULL WIDTH OF FRONTAGE
- ㉝ PERFORATED METAL GUARDRAIL OVER CONCRETE RETAINING WALL
- ㉞ 50' HOSE DRYING RACK
- ㉟ MEDIAN CUT TO BE COORDINATED WITH SANTA ROSA TRAFFIC ENGINEERING DEPARTMENT
- ㊱ EXTENDED LEFT TURN LANE AND REPLACEMENT TREES
- ㊲ SLOPE/ACCESS DRAINAGE EASEMENT

LEGEND

- - - PROPERTY LINE
- CONCRETE WALKWAY AND DRIVEWAY
- ASPHALT PAVING
- STAINED CONCRETE
- PLANTED STORMWATER BASIN
- GROUND COVER PLANTING AND TREES, SEE LANDSCAPE PLAN
- ← ONE-WAY TRAFFIC
- ↔ TWO-WAY TRAFFIC
- WATER FLOW - SURFACE


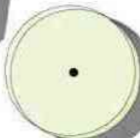







SCALE:
1" = 20'-0"





LANDSCAPE TYPOLOGY

-  NATIVE OAK MITIGATION TREE
-  STREETScape TREES
-  STREETScape PLANTING
-  SITE PLANTING
-  LID PLANTING
-  NON IRRIGATED SEED
-  COBBLE/BOULDER- from site

CANDIDATE PLANT LIST

| | Water Needs | Exposure | Height | Spread | Type | Bloom Time |
|---|-------------|------------------------|----------|---------|----------------|----------------------|
| STREETScape | | | | | | |
| <i>Grevillea lanigera</i> 'Coastal' Gem | L | Full Sun | 1' | 4-5' | Shrub | Year-round |
| <i>Myoporum parvifolium</i> 'putah creek' | L | Full Sun | <1' | 10-15' | Shrub | Summer |
| <i>Zauschneria 'Calistoga'</i> | L | Full Sun | 1-2' | 2-4' | Shrub | Summer, Fall, Winter |
| <i>Phlomis fruticosa</i> | L | Full Sun | 2-4' | 3-5' | Shrub | Spring, Summer |
| PLANTERS | | | | | | |
| <i>Dasyliion wheeleri</i> | VL | Full Sun | 4-6' | 3-4' | Succulent | Summer |
| <i>Chondropetalum tectorum</i> | L | Sun or Shade | 2-3' | 3-4' | Grass | Summer, Fall |
| <i>Lomandra longifolia</i> 'lime tough' | L | Sun or Shade | 2-3' | 2-4' | Grass | Summer |
| <i>Stachys byzantina</i> | L | Full Sun | .75-1.5' | 4-8' | Herb | Spring, Summer |
| <i>Origanum 'Kent Beauty'</i> | M | Full Sun | 1-3' | 1-2' | Herb | Summer, Fall |
| <i>Echinacea purpurea</i> | M | Sun, Part Shade | 2-5' | 1.5-2' | Herb | Summer |
| <i>Furcraea foetida</i> 'Variegata' | L | Sun, Part Shade | 3-5' | 3-5' | Succulent | At Maturity |
| <i>Mangave 'Spotty Dotty'</i> | L | Full Sun | 1' | 2-3' | Succulent | Infrequent |
| <i>Chrysocephalum 'Silsun'</i> | M | Full Sun | 5-7" | 1-1.5' | Shrub | Summer |
| LID | | | | | | |
| <i>Juncus effusus</i> | M | Sun, Part Shade | 5-6.5' | 3' | Grass | Summer |
| <i>Achillea millefolium</i> | L | Full Sun to Full Shade | 1-3' | .5-1.5' | Herb | Summer, Spring |
| <i>Carex divulsa</i> | L | Sun or Shade | 1-2' | 1-2' | Grass | Spring |
| STREET TREES | | | | | | |
| <i>Quercus suber</i> | L | Full Sun, Part Shade | 70' | 30' | Evergreen Tree | Spring |
| <i>Pistachia chinensis</i> | L | Full Sun, Part Shade | 35' | 25-35' | Deciduous Tree | Spring |
| <i>Celtis Australis</i> | L | Full Sun to Full Shade | 70' | 40-50' | Deciduous Tree | Spring |
| <i>Tilia cordata</i> | M | Full Sun, Part Shade | 50-70' | 35-50' | Deciduous Tree | Summer |
| SITE TREES | | | | | | |
| <i>Quercus agrifolia</i> | VL | Full Sun, Part Shade | 70' | 20-70' | Evergreen Tree | Spring |
| <i>Quercus lobata</i> | L | Full Sun, Part Shade | 70' | 50' | Deciduous Tree | Spring |

SCALE: 1" = 20'-0"

PROJECT:
SANTA ROSA
FIRE STATION 5
RESILIENCY &
RELOCATION
1400 FOUNTAIN GROVE
PARKWAY
SANTA ROSA, CA 95404



DESCRIPTION: PLANNING PACKAGE
DATE: 05/09/23





NOT FOR CONSTRUCTION

PROJECT NUMBER:
221003

SHEET TITLE:
LANDSCAPE PLAN

SHEET NUMBER:
L-1

LEGEND

-  SEALED CONCRETE
-  POLISHED STAINED CONCRETE
-  HIGH DENSITY CONCRETE
-  RUBBER MAT



| ROOM NAME | NET AREA |
|----------------|----------|
| LOBBY | 218 SF |
| FR / HWH | 34 SF |
| JAN. | 42 SF |
| RR | 75 SF |
| OFFICE | 252 SF |
| CAP. OFFICE | 166 SF |
| HALL | 758 SF |
| DAY ROOM | 459 SF |
| BUNK 1 | 142 SF |
| BUNK 2 | 142 SF |
| BUNK 3 | 142 SF |
| BUNK 4 | 142 SF |
| BUNK 5 | 142 SF |
| STORAGE | 50 SF |
| LAUN. | 79 SF |
| RR | 78 SF |
| ACC RR | 86 SF |
| ACC RR | 86 SF |
| ELEC | 143 SF |
| STORAGE | 40 SF |
| COMM | 53 SF |
| CAPTAIN | 149 SF |
| CAP. RR | 105 SF |
| VESTIBULE | 64 SF |
| APPARATUS BAY | 2657 SF |
| APP. STORAGE | 75 SF |
| HALL | 100 SF |
| TURNOUTS (19) | 170 SF |
| DECON. / JAN. | 161 SF |
| SHOP | 165 SF |
| FITNESS | 424 SF |
| DINING | 248 SF |
| KITCHEN | 328 SF |
| RR | 81 SF |
| TOTAL NET SF | 8061 SF |
| <hr/> | |
| CORE | 683 SF |
| <hr/> | |
| TOTAL GROSS SF | 8,744 SF |



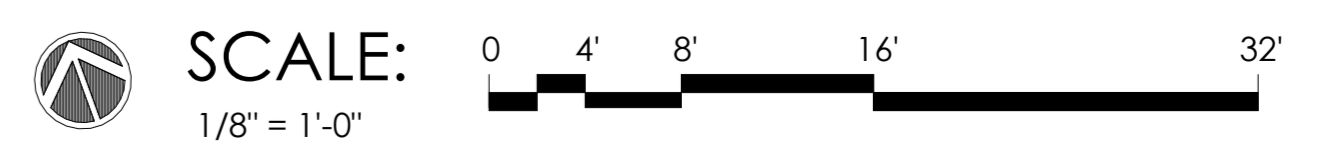
PROJECT:
 SANTA ROSA
 FIRE STATION 5
 RESILIENCY &
 RELOCATION
 1400 FOUNTAINGROVE
 PARKWAY
 SANTA ROSA, CA 95404



DESCRIPTION: PLANNING PACKAGE
 DATE: 05/09/23

NOT FOR
 CONSTRUCTION
 PROJECT NUMBER:
 221003
 SHEET TITLE:
 FLOOR PLAN

SHEET NUMBER:
 A2.0



PROJECT:

SANTA ROSA
FIRE STATION 5
RESILIENCY &
RELOCATION
1400 FOUNTAINGROVE
PARKWAY
SANTA ROSA, CA 95404



DESCRIPTION: PLANNING PACKAGE
DATE: 05/09/23

NOT FOR CONSTRUCTION

PROJECT NUMBER:
221003

SHEET TITLE:
EXTERIOR ELEVATIONS

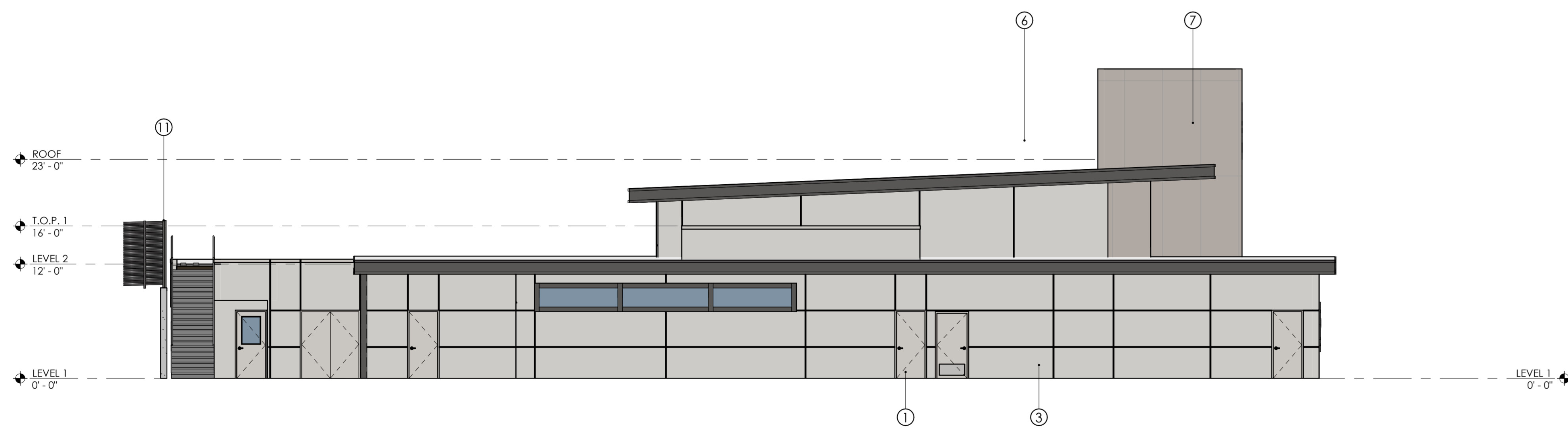
SHEET NUMBER:

A3.1



1. NORTH

- ① HOLLOW METAL DOORS AND FRAMES, TYP. AT EXTERIOR
- ② ENERGY EFFICIENT ALUMINUM STOREFRONT, TYP.
- ③ INTEGRAL COLOR STUCCO, TYP.
- ④ OUTSWING BI-FOLD DOORS
- ⑤ NOT USED
- ⑥ METAL FASCIA
- ⑦ FIBER CEMENT PANELS - EQUITONE TECTIVA OR EQUAL
- ⑧ INSET ROUTERED PANEL DESIGN
- ⑨ CONCRETE RETAINING WALLS, TYP.
- ⑩ BUILDING SIGNAGE
- ⑪ 7'-0" HIGH LOUVERED FENCE
- ⑫ ALUMINUM SOFFIT PANELS WITH SIMULATED WOOD FINISH



2. EAST

SCALE: 1/8" = 1'-0"
0 4' 8' 16' 32'

PROJECT:

SANTA ROSA
FIRE STATION 5
RESILIENCY &
RELOCATION
1400 FOUNTAIN GROVE
PARKWAY
SANTA ROSA, CA 95404



DESCRIPTION: PLANNING PACKAGE
DATE: 05/09/23

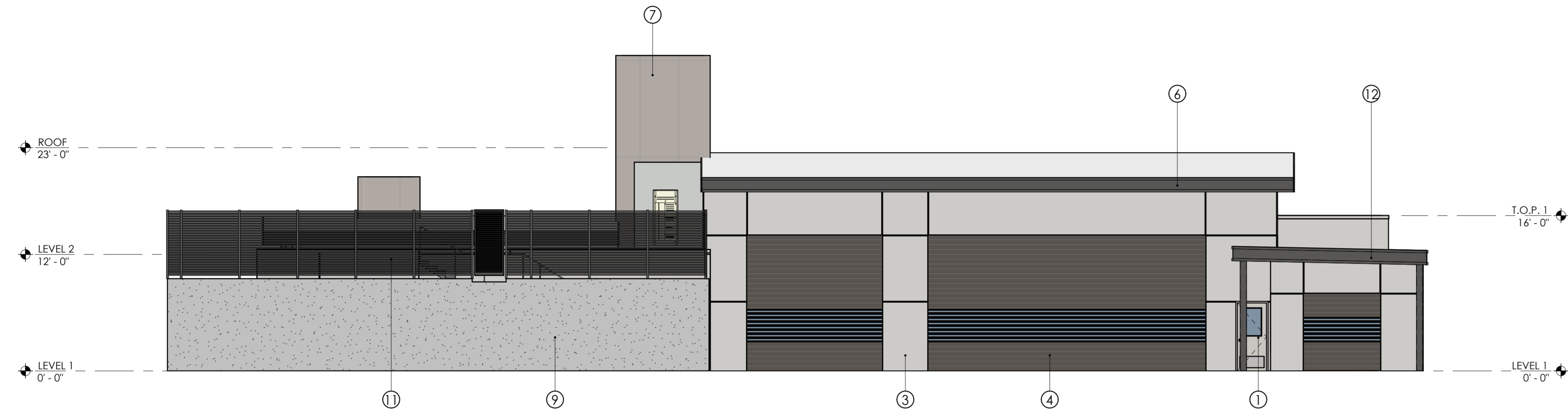
NOT FOR CONSTRUCTION

PROJECT NUMBER:
221003

SHEET TITLE:
EXTERIOR ELEVATIONS

SHEET NUMBER:

A3.2

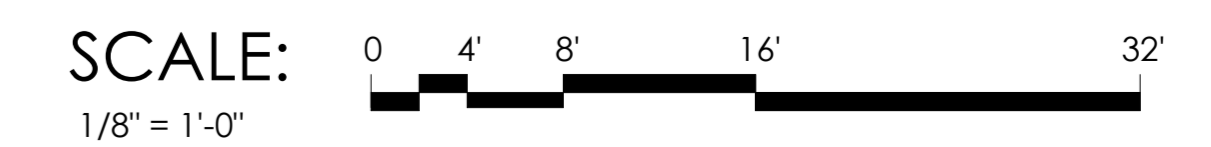


1. SOUTH

- ① HOLLOW METAL DOORS AND FRAMES, TYP. AT EXTERIOR
- ② ENERGY EFFICIENT ALUMINUM STOREFRONT, TYP.
- ③ INTEGRAL COLOR STUCCO, TYP.
- ④ OVERHEAD COILING DOORS WITH VISION LITES
- ⑤ NOT USED
- ⑥ METAL FASCIA
- ⑦ FIBER CEMENT PANELS - EQUITONE TECTIVA OR EQUAL
- ⑧ INSET ROUTERED PANEL DESIGN
- ⑨ CONCRETE RETAINING WALLS, TYP.
- ⑩ ENERGY EFFICIENT CASEMENT WINDOWS
- ⑪ 7'-0" HIGH LOUVERED FENCE
- ⑫ COVERED FITNESS PATIO
- ⑬ MULTI-SLIDE PATIO DOOR



2. WEST



PROJECT:
SANTA ROSA
FIRE STATION 5
RESILIENCY &
RELOCATION
1400 FOUNTAIN GROVE
PARKWAY
SANTA ROSA, CA 95404



DESCRIPTION: PLANNING PACKAGE
DATE: 05/09/23

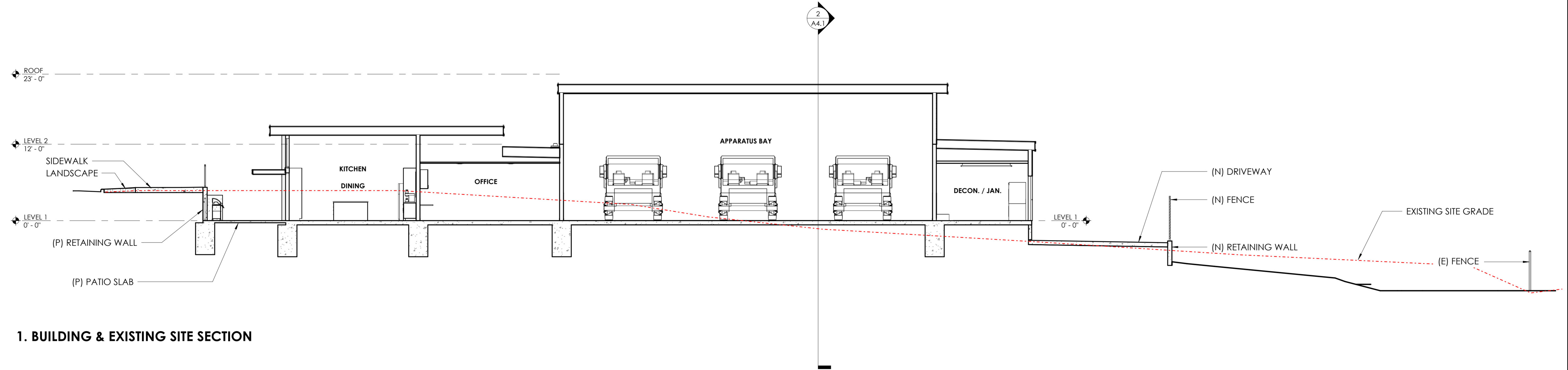
NOT FOR CONSTRUCTION

PROJECT NUMBER:
221003

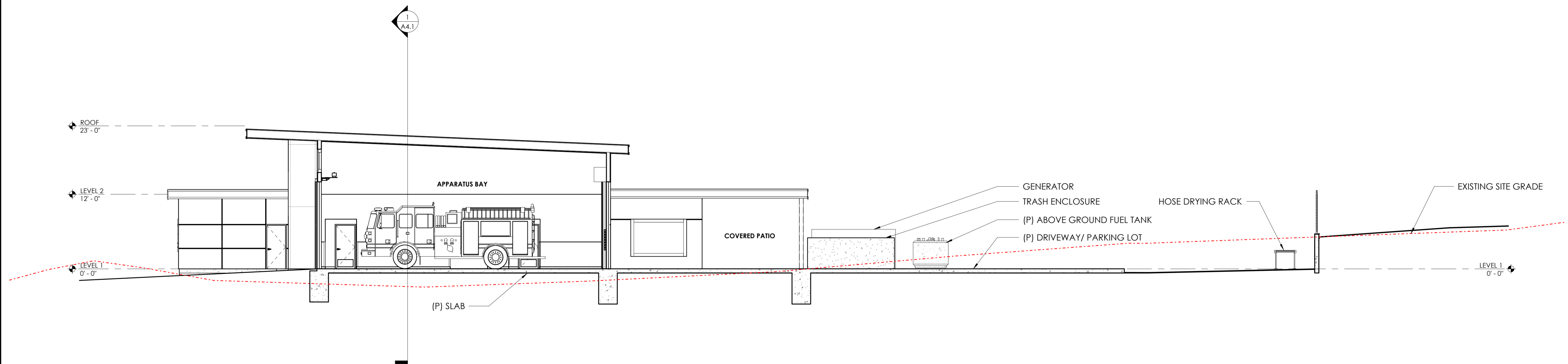
SHEET TITLE:
BUILDING &
EXISTING SITE
SECTIONS

SHEET NUMBER:

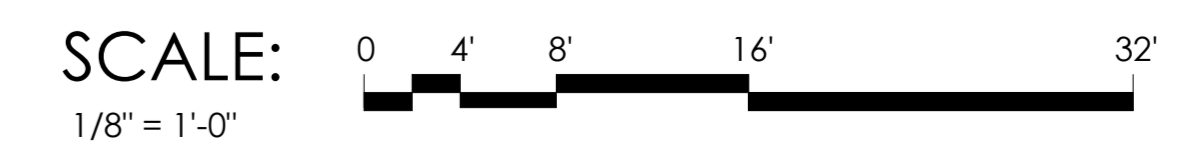
A4.1



1. BUILDING & EXISTING SITE SECTION



2. BUILDING & EXISTING SITE SECTION





coar
DESIGN GROUP

200 E STREET, SANTA ROSA, CA 95404
415.886.9177 | www.coargroup.com

PROJECT:

SANTA ROSA
FIRE STATION 5
RESILIENCY &
RELOCATION
1400 FOUNTAIN GROVE
PARKWAY
SANTA ROSA, CA 95404



DESCRIPTION:

PLANNING
PACKAGE

DATE:

05/09/23

NOT FOR
CONSTRUCTION

PROJECT NUMBER:

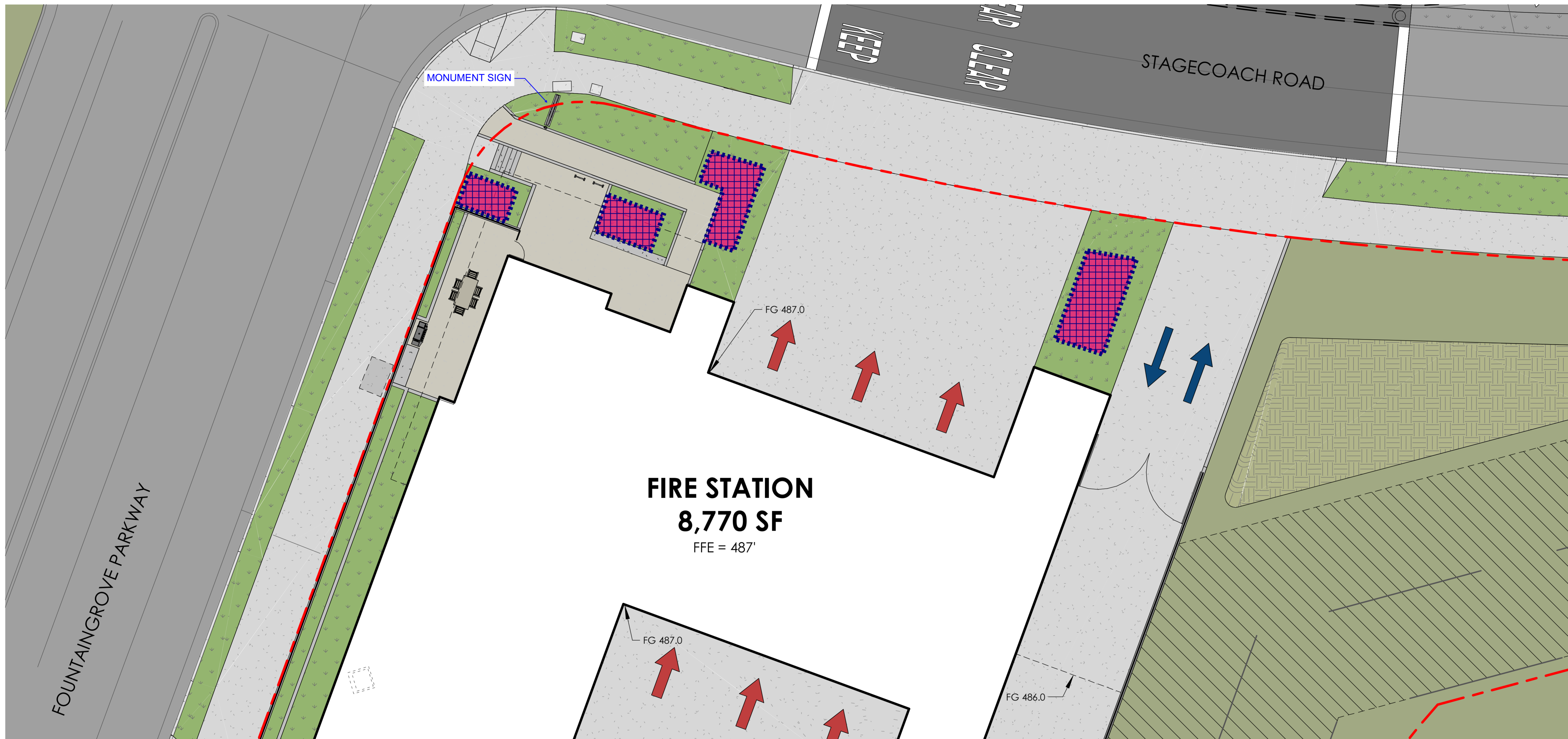
221003

SHEET TITLE:

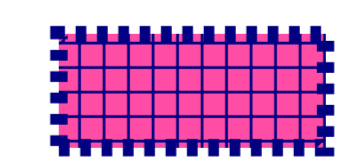
3D VIEW -
EXTERIOR

SHEET NUMBER:

A5.0



FIRE STATION
8,770 SF
 FFE = 487'



DENOTES LOCATIONS FOR
 PUBLIC ART OPPORTUNITIES

